

# Construction update



## Town Hall Station

February 2026

The Metro Tunnel is now open and fully integrated into the train network with all Cranbourne, Pakenham and Sunbury services running exclusively through the new tunnel. Passengers can access Town Hall Station using the entrance at City Square, Swanston Street, or Flinders Street Station via the Degraves Street subway and Campbell Arcade.

Whilst major construction to build Town Hall Station is now complete, works will continue to finish building the remaining entrance at Fed Square.

### Changes to our monthly construction update

We'd like to thank you for your patience over the last several years while we built the Metro Tunnel's Town Hall Station.

As the Metro Tunnel is now open, this will be the final monthly construction update.

We will continue undertaking some minor works in the area as well as works required to complete the

Fed Square entrance. We will notify you about these works as needed.

Should you wish to stay up to date with upcoming Metro Tunnel Project works, you can subscribe for email updates by visiting [metro.tunnel.vic.gov.au/subscribe](https://metro.tunnel.vic.gov.au/subscribe) or contact the project information line on **1800 105 105**, 24 hours a day, 7 days a week.



Town Hall Station entrance from Swanston Street



**Sign up for updates**  
Subscribe for email and SMS updates  
at [metro.tunnel.vic.gov.au/subscribe](https://metro.tunnel.vic.gov.au/subscribe)

Construction partner:



Cross  
Yarra  
Partnership



## When are we working?



### Normal construction hours

7am to 6pm, Monday to Friday  
7am to 1pm, Saturdays



### Out of hours

Some works are required to take place out of normal construction hours



### 24 hours

24 hour works are sometimes required during peak construction activities



Town Hall Station entrance on Swanston Street is now open

## Upcoming works in your area

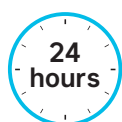
### Fed Square site

Town Hall Station will include an entrance at Fed Square. Construction is ongoing for this entrance.

#### 24-hours, Monday to Sunday

Works occurring include:

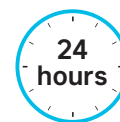
- Below ground structural works and fit-out of the station passenger areas and operational rooms, including installation of waterproofing materials, steel and concrete
- Above ground service installations, reinstatement works and structural works, involving the removal of existing pavement, installation of new drainage and conduits, and construction of a new concrete slab
- Delivery and installation of the station entrance canopy is continuing over the coming months, as well as construction and fit out of the structure
- These works will generate some periods of high-level noise as well as regular deliveries via the Flinders Street loading bay and crane
- Flinders Street westbound remains closed with all vehicles to turn left at St Kilda Road.



### Flinders Street eastbound reinstatement

#### 24-hours, Monday to Sunday 10 to 14 February

- Reinstatement works will take place at Flinders Street eastbound, between Swanston Street and Elizabeth Street
- This will involve profiling the existing asphalt, re-applying a new layer of asphalt on the eastbound lane, and installing the permanent linemarking
- There will be short-term road and footpath closures during these works.
- Works to realign eastbound Flinders Street lanes at Queen Street will also take place this year
- Flinders Street eastbound will reopen with a single lane this year.



### Awning reinstatement preparatory works

#### 4:30pm to 2:30am, Monday to Thursday Late February

- Preparatory works for the awning installation at 244 Flinders Street are continuing in February
- During these works, the northern Flinders Street footpath will be closed at 244 Flinders Street
- The Flinders Street pedestrian crossing will remain open, with access maintained to Degraes Street
- A pedestrian detour will be in place via the southern Flinders Street footpath
- These works are expected to generate medium to high-level noise
- Local stakeholders will be notified directly regarding these works.





## Thank you

We'd like to thank the community for your patience as we built Town Hall Station. We have been your neighbour in the CBD since early works for the Metro Tunnel commenced in 2017.

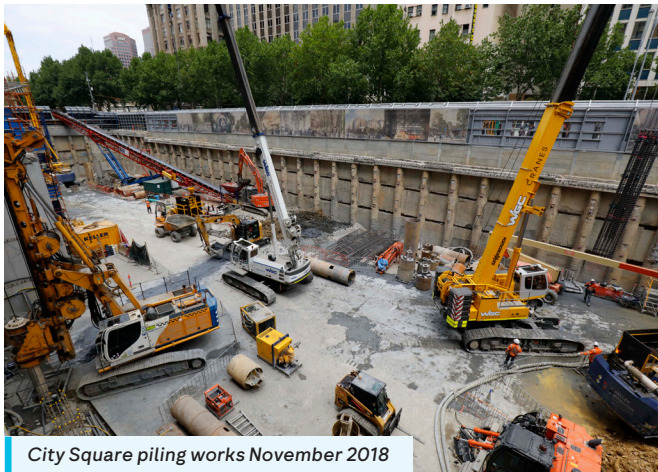
We appreciate that construction of such a large project may have caused impacts to those living, working or visiting the area.

Town Hall Station is now open, with all entrances accessible except Fed Square.

Thank you for being on this journey with us.



Archaeology dig at the Flinders Quarter site May 2018



City Square piling works November 2018



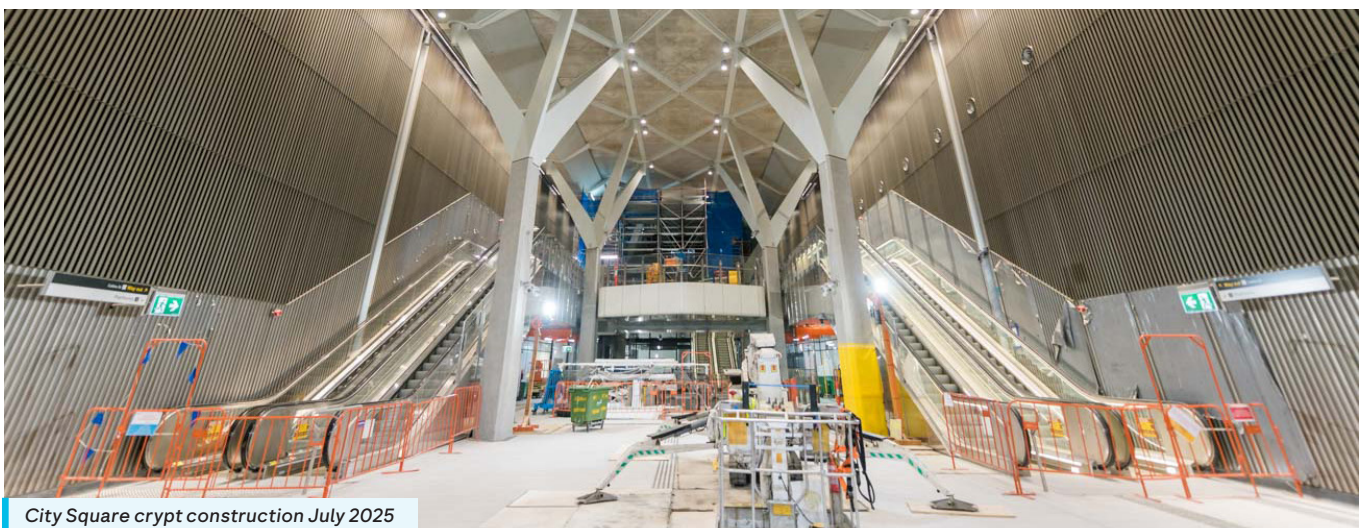
The final TBM breaks through at Town Hall Station May 2021



Platform central cavern March 2022



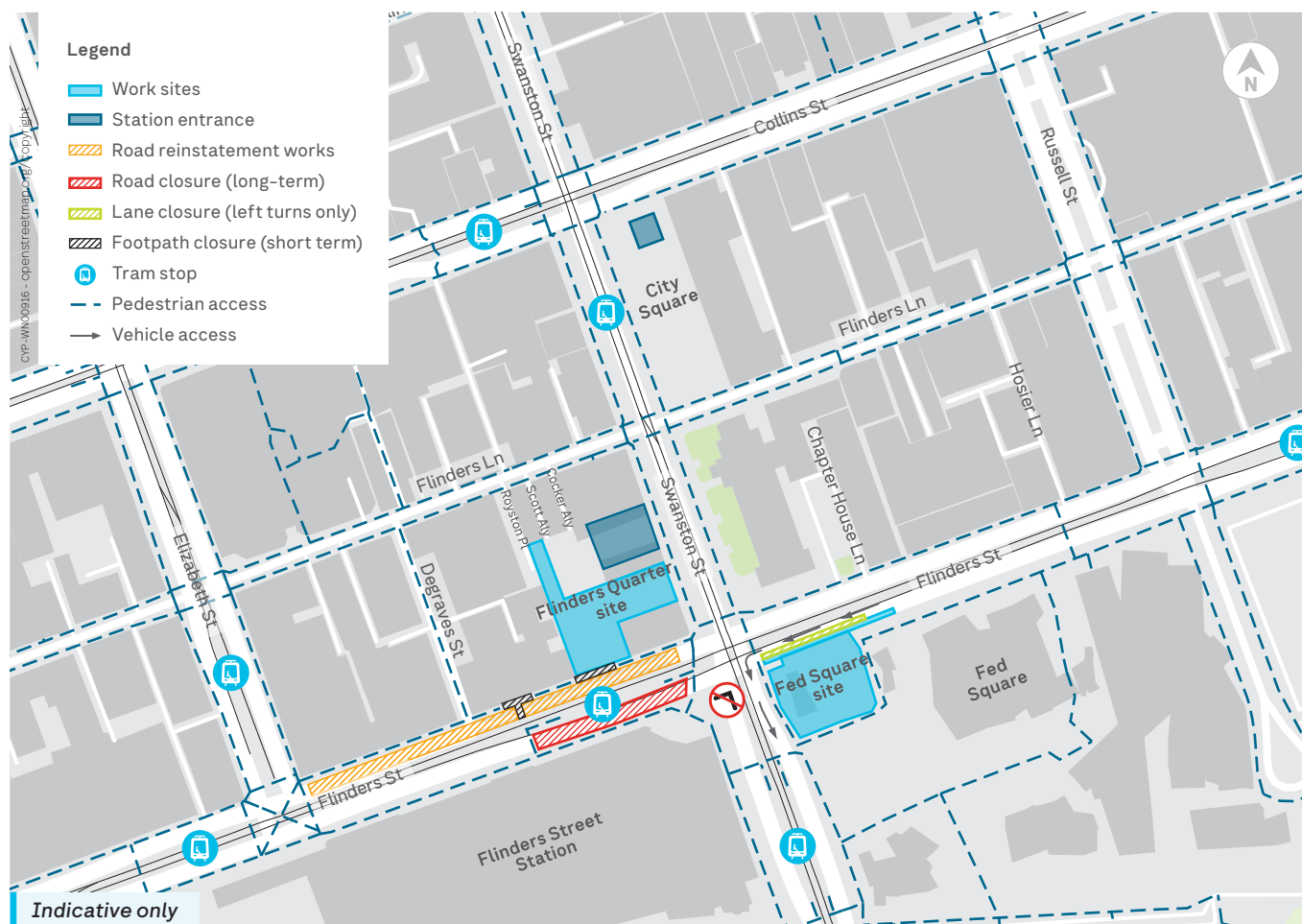
Passenger connection between Flinders Street Station and Town Hall Station October 2022



City Square crypt construction July 2025



## Works area map



### Business support

While the new Town Hall Station will be a significant boost for the local area, construction activities can impact local businesses. In response to this, our Business Support Team assists businesses through the disruption.

Please see the promotion in this notification for **Daniel's Donuts, Shop 1 / 238 Flinders Street, Melbourne.**

We look forward to promoting more local businesses during the final months of the project.

Find out more

[metrotunnel.vic.gov.au](https://metrotunnel.vic.gov.au)

1800 105 105 (call anytime)



For languages other than English  
please call (03) 9209 0147



Please contact us if you would like this information in an accessible format. If you need assistance due to a hearing or speech impairment, visit [relayservice.gov.au](https://relayservice.gov.au)



Daniel likes to say:

**“Our donuts are light  
and fluffy, just like clouds”.**



*Daniel's*<sup>®</sup>  
— DONUTS —  
EST. 2016

**And he's right!**



**FLINDERS ST. STORE  
NOW OPEN**

**DANIEL'S DONUTS**

Shop 1 / 238 Flinders Street, Melbourne  
Ph. 03 7006 1967  
[info@danielsdonuts.com.au](mailto:info@danielsdonuts.com.au)

