

Upcoming works in Heatherton and Clarinda

Site investigations and earthworks

- 7am to 6pm, Monday to Friday
- 7am to 1pm, Saturday

Train stabling facility, Heatherton

Continuing until late August

- We're doing site investigations across our train stabling facility worksite. This will help inform the design and construction methodology to build the train stabling facility.

From May

- We're working to prepare the train stabling facility site for construction
- This includes earthworks, such as excavation and moving soil to level the ground
- Works will be contained within the train stabling facility worksite.

Tunnel boring machine (TBM) launch site preparation

- 24 hours, Monday to Sunday

TBM launch site, Clarinda

Continuing until late 2026

- We're excavating the TBM launch site in Clarinda
- TBMs will be carefully lowered down into these shafts so that tunnelling can start

Next steps: Building the train stabling facility at Heatherton

The contract to build the train stabling facility at Heatherton was awarded to the Linewide Alliance in December 2025.

The Linewide Alliance is a consortium of global leaders including John Holland, RATP Dev, Alstom, KBR and WSP; with extensive local and international experience on major transport projects including Melbourne's Metro Tunnel.

In addition to building the train stabling facility, the Linewide Alliance will

- Build SRL East's fleet of high-tech automated trains
- Operate and maintain the SRL East network for 15 years
- Fit out the tunnels including tracks, signalling and communications systems.

The Linewide Alliance began site investigations in February and works will continue to ramp up from mid 2026.



Site investigations at the train stabling facility



Normal hours

- Specialised machinery and gantry cranes will be used to lower sections of the TBMs to the bottom of the shaft, where they'll start their journey towards Glen Waverley and Heatherton
- We're building an acoustic shed to minimise dust, noise and light from tunnelling activities.

Tunnel entrances in Heatherton



- up to 24 hours, Monday to Sunday

Western tunnel entrance, Heatherton

Continuing until late 2026

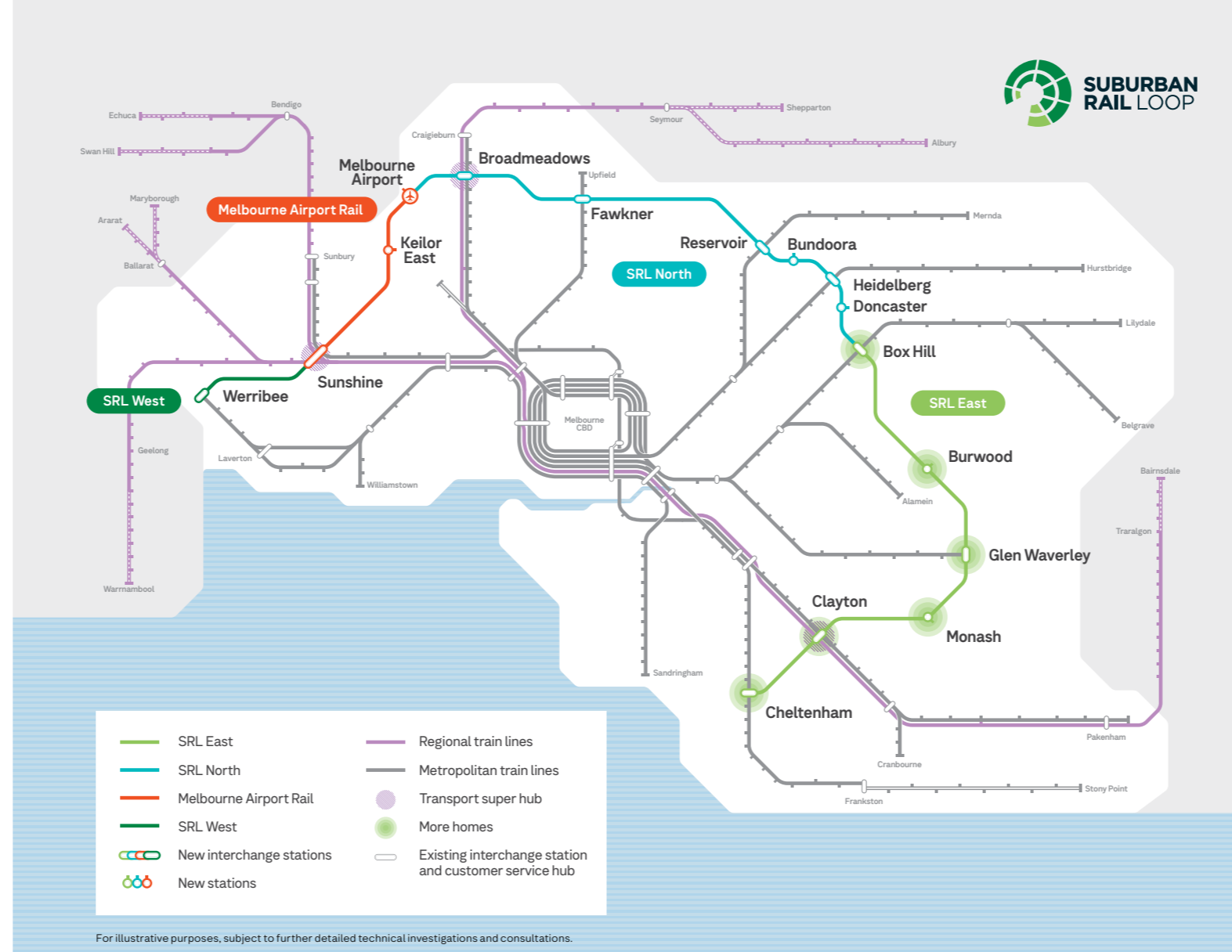
- We're excavating the western tunnel entrance for TBMs to build the tunnels between Heatherton and Cheltenham
- We're also constructing a large acoustic shed to reduce noise and other impacts from our tunnelling equipment.

- up to 24 hours, Monday to Sunday

Eastern tunnel entrance, Heatherton

Continuing until late 2026

- We're preparing the eastern tunnel entrance for tunnelling
- This includes earthworks to create an internal drainage system, and new access roads for critical tunnelling equipment to be transported around the site
- We're also installing more fencing around the worksite to reduce noise, dust and light coming from the worksite.



Work is progressing on Suburban Rail Loop and 2026 is the project's busiest year yet. We have translated this newsletter into other languages to keep everyone updated about Suburban Rail Loop news.



Scan the QR code on your smart phone for more information or go to our website.

郊區鐵路環線 (Suburban Rail Loop) 工程現正進行中，而 2026 年將會是目前為止我們最繁忙的一年。

此通訊已翻譯成多種語言，您可透過各語言版本瞭解郊區鐵路環線之最新消息。



使用手機掃描 QR 碼，以獲取更多資訊或瀏覽相關網頁。

近郊铁路环线 (Suburban Rail Loop) 项目工作正在推进，2026 年将会是目前为止我们最繁忙的一年。

我们将这份通讯翻译成多种语言，帮助您及时了解近郊铁路环线项目的最新消息。



请用智能手机扫描二维码了解更多信息，或直接访问我们的网站。

contact@srla.vic.gov.au | 1800 105 105 (call anytime)
suburbanrailloop.vic.gov.au

Please contact us if you would like this information in an accessible format. If you need assistance due to a hearing or speech impairment, please visit relayservice.gov.au

For languages other than English please call 9209 0147

如需非英语信息，请拨打 9209 0147

如需使用英語以外的其他語言，請致電 9209 0147

अंग्रेजी के अलावा अन्य भाषाओं के लिए कृपया 9209 0147 पर कॉल करें



TBM cutterhead at the SRL Heatherton site



Heatherton & Clarinda

CONSTRUCTION UPDATE | MAY 2026

Major construction is powering ahead

Suburban Rail Loop (SRL) East from Cheltenham to Box Hill is in major construction. The SRL East will deliver 26km of twin-tunnels with six new underground stations and a dedicated train stabling facility near the start of the line to allow SRL's fleet of new high-tech trains to begin services efficiently each day.

The train stabling facility in Heatherton will house the operational control centre for the new railway line and is where trains will be cleaned, stored and maintained when not in service.

Tunnelling starts this year

Significant work has already been completed in Heatherton and Clarinda.

A massive tunnel boring machine (TBM) launch site is taking shape in Clarinda, in preparation for the start of tunnelling later this year. TBMs launched from Clarinda will build the southern section of the SRL East tunnels.

At the train stabling facility in Heatherton, the eastern tunnel entrance has been built, with excavation of the western tunnel entrance now underway. SRL trains will come to the surface via these entrances when services begin operating in 2035.

Following contract award last year, the Linewide Alliance is now on-site undertaking major earthworks in preparation for building the train stabling facility.

More information
suburbanrailloop.vic.gov.au

Heatherton / Clarinda construction timeline

- 2022-2025
 - Early works
- 2025
 - Main works began
 - Tunnel boring machines began arriving on site
- 2026
 - SRL East tunnelling begins at Clarinda
 - Acoustic shed construction
 - Earthworks continue
- 2035
 - Trains running on SRL East



What is an acoustic shed and why are we building them?

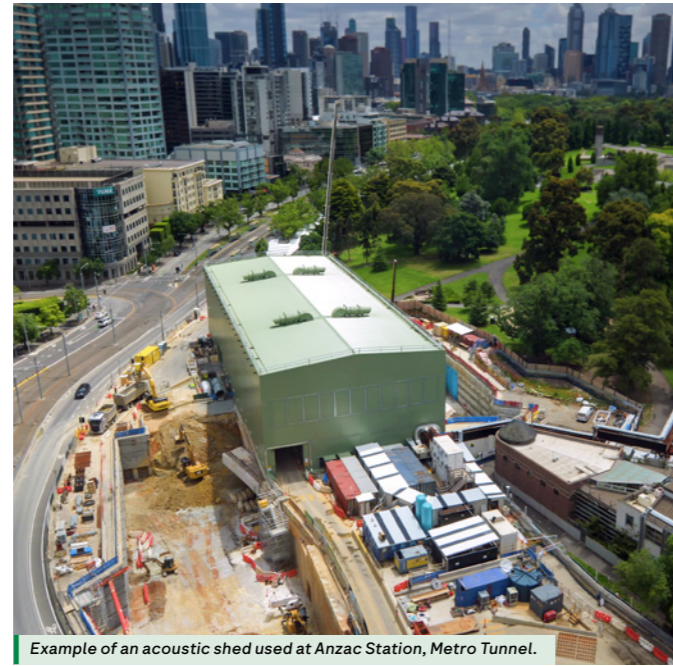
Acoustic sheds are large, purpose-built structures designed to reduce noise, dust and light spill construction activities.

They are commonly used on major infrastructure projects, including the Metro Tunnel, where they proved effective in minimising, noise, dust and light impacts on nearby homes and businesses.

- **Clarinda:** An acoustic shed will be built over the tunnel boring machine launch site before tunnelling starts in 2026. This shed will be 110m long x 80m wide x 20m high which could hold around 70 Olympic swimming pools full of water
- **Heatherton:** An acoustic shed will be built at the western tunnel entrance. This shed will be 80m long x 35m wide x 15m high - that's the footprint of the Rod Laver arena event floor.

On average, building an acoustic shed takes approximately three to four months. Both sheds are expected to be completed later this year.

These steel sheds will enclose noisy equipment and activities during 24-hour tunnelling operations, helping to reduce the impact of construction noise on nearby homes and businesses.



Example of an acoustic shed used at Anzac Station, Metro Tunnel.

Heatherton and Clarinda progress update



Eastern tunnel entrance, Heatherton, where trains will surface at the future train stabling facility.



Excavation works at the tunnel boring machine launch site in Clarinda



Heatherton Community Reference Group (CRG)

The Suburban Rail Loop (SRL) established a Community Reference Group (CRG) in Heatherton in early 2023.

The CRG provides a forum for local community and stakeholder engagement during planning, development and delivery of the SRL East stabling facility.

For further details, including CRG presentations and meetings minutes, please visit the Big Build website at suburbanrailloop.vic.gov.au/community-reference-group

Community Crew lends a helping hand

Community organisations, business owners and residents living and working near SRL East construction sites are receiving hands-on help from our 'Community Crew.'

The Community Crew supports locals with window, house and car cleaning, gardening, deliveries, graffiti removal and more helping to reduce the impacts of construction during project delivery.

The team of five is fully trained to support local residents and businesses across SRL East's southern section between Cheltenham and Glen Waverley as major works continue.

The crew is led by Soloman, a team leader at Wallara - a not-for-profit organisation providing meaningful employment for people living with a disability.

With construction of SRL East now well underway, the community crew is working full time to support locals. To request assistance email contact@srla.vic.gov.au, or phone 1800 105 105 (call anytime).

The team has now completed an incredible **500 jobs**, including more than 350 across Heatherton and Clarinda. A huge thank you to the crew for their hard work, dedication and ongoing support for the community.



The Community Crew helping locals

