



## DOMAIN COMMUNITY REFERENCE GROUP

**Meeting #25**

Wednesday 16 September, Online Meeting

# CREATIVE PROGRAM UPDATE

# DOMAIN ROAD POP-UP PARK

- Decks resealed to improve slip resistance
- Extra signage instructing people not to sit on benches
- Creative Program is now working with RPV and City of Melbourne on extending the duration of the park through to May 2021 subject to conditions – including a car parking assessment to be conducted
- Working with The Botanical and other businesses to install remaining two modules



# ALBERT ROAD RESERVE POP-UP PARK

- Works are due to start in **late October** (permits permitting)
- Construction of the park should take **6-8 weeks**, meaning the park should be open by **early-mid December**
- Workers will be fully briefed on appropriate safe working requirements under current restrictions
- The Place Agency will be the project managers of the works.
- Hoping to complete a letterbox with timeframes for works to all surrounding residents **2 weeks prior** to work commencing
- Information will also be available online and in Works Notifications.





# ALBERT ROAD RESERVE POP-UP PARK

## **Who is responsible for the park?**

The park is installed and maintained by the Metro Tunnel Creative Program.

## **Will any carparks be removed?**

The park has been designed to fit in the existing space in the reserve and will not take over any carparks.

## **What will happen during construction of the park?**

Works are minor with minimal excavation and no heavy machinery onsite.

During construction approximately up to 3 car spaces will be required for a short period of time to support the build.

The build will take approximately 6-8 weeks and the hours will take place at similar times to the current project works.

## **Will there be more dust and noise?**

Excavation is minimal with no heavy machinery onsite.



# ALBERT ROAD RESERVE POP-UP PARK

## **Will the park be accessible?**

The park will be fully DDA compliant.

## **How will you detract people from smoking or drinking in the park?**

As with any public space it can be difficult to enforce rules on legal behaviour by people however we have designed the space to encourage active play or restful respite to enhance liveability.

## **How will you ensure the park remains a safe and pleasant place to be?**

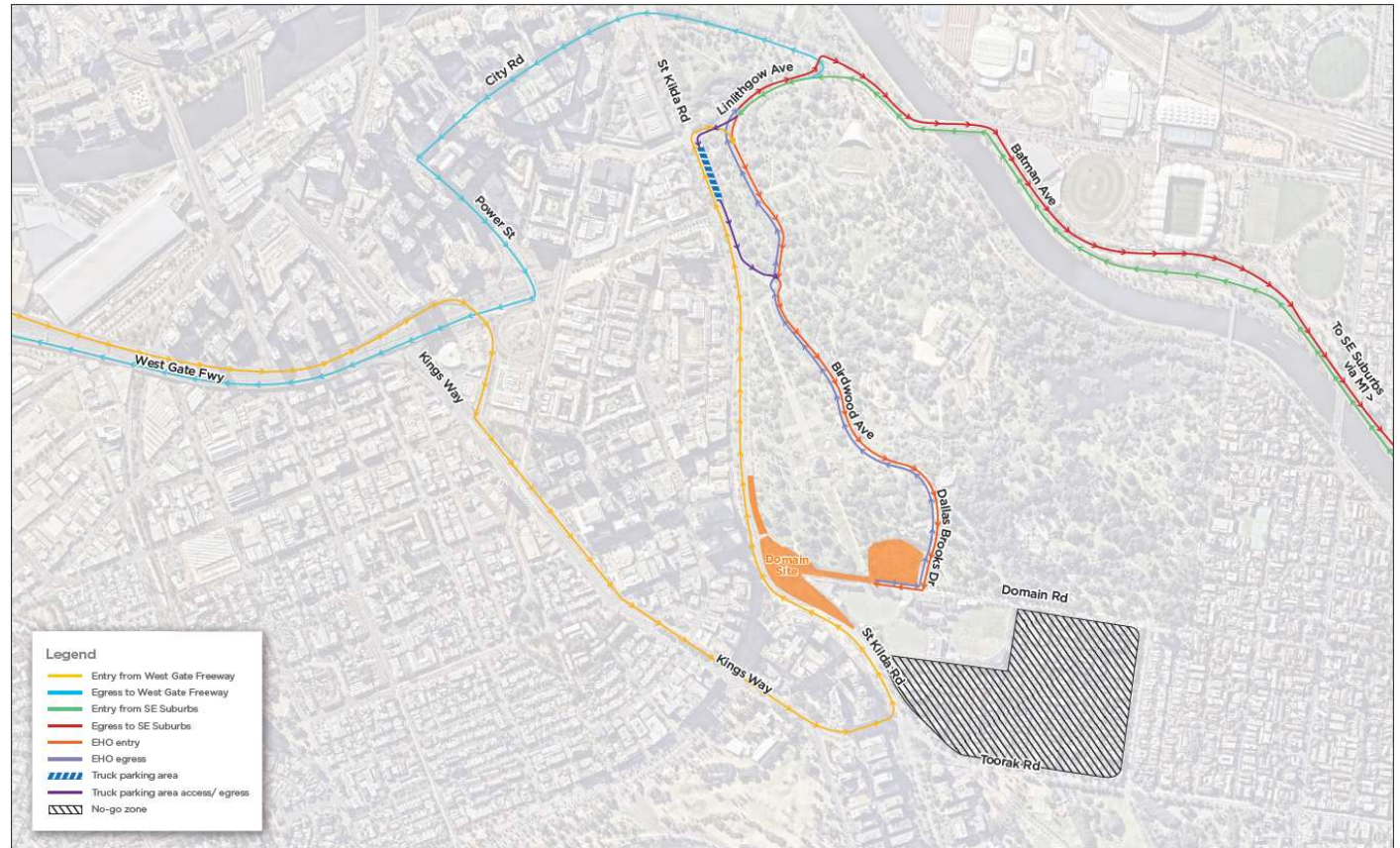
The park will be maintained and cleaned by the Metro Tunnel Creative Program which will also work with the City of Port Phillip and Victoria Police to ensure the park is monitored.

The space has been designed to enhance liveability and local authorities will be aware of its presence to help ensure community safety. As with all public spaces, Victoria Police will respond to reports of antisocial behaviour.

# KEY ISSUES

# EHO SOIL REMOVAL ROUTES - 2020

- The routes proposed at our previous CRG meeting have since been confirmed
- Road improvement works will also be undertaken next week to fix the uneven surface in front of the Domain building
- This permanent fix will reduce noise made by trucks when passing over this section of road



Indicative only

EHO Spoil Removal Truck Routes



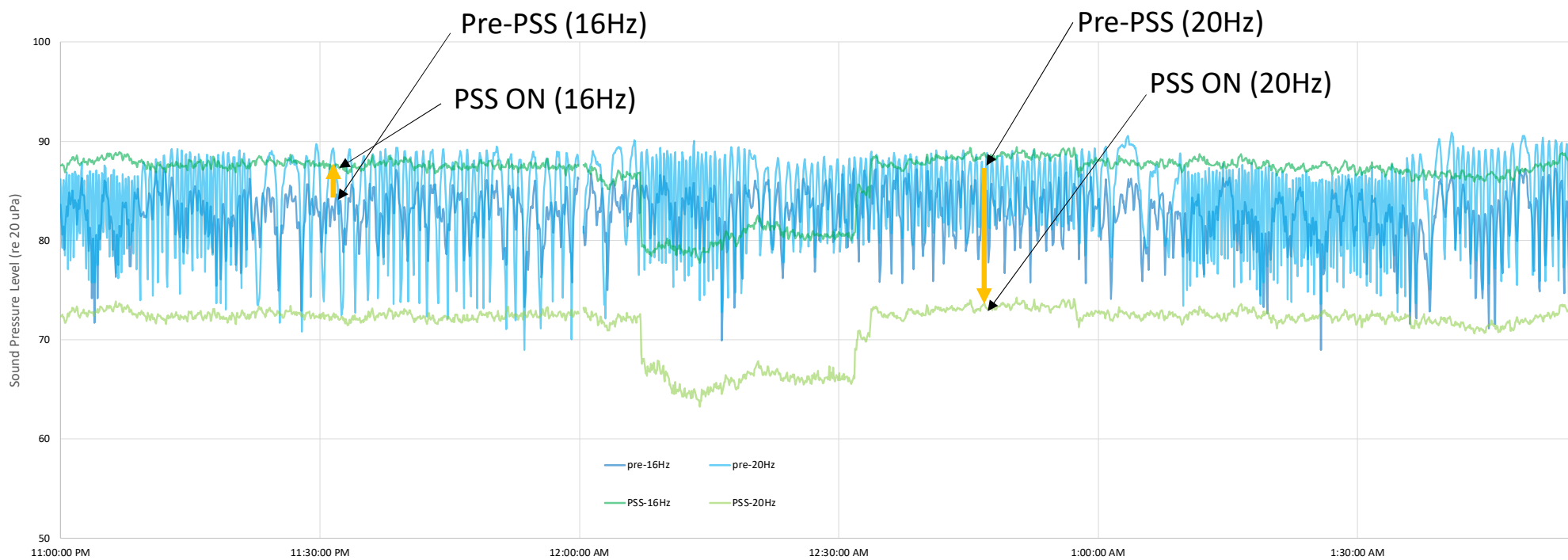
# EDMUND HERRING OVAL INFRASTRUCTURE

- Low frequency noise from the TBM Slurry Treatment Plant (STP) has been identified as cause of feelable vibration and rattling within some residential properties

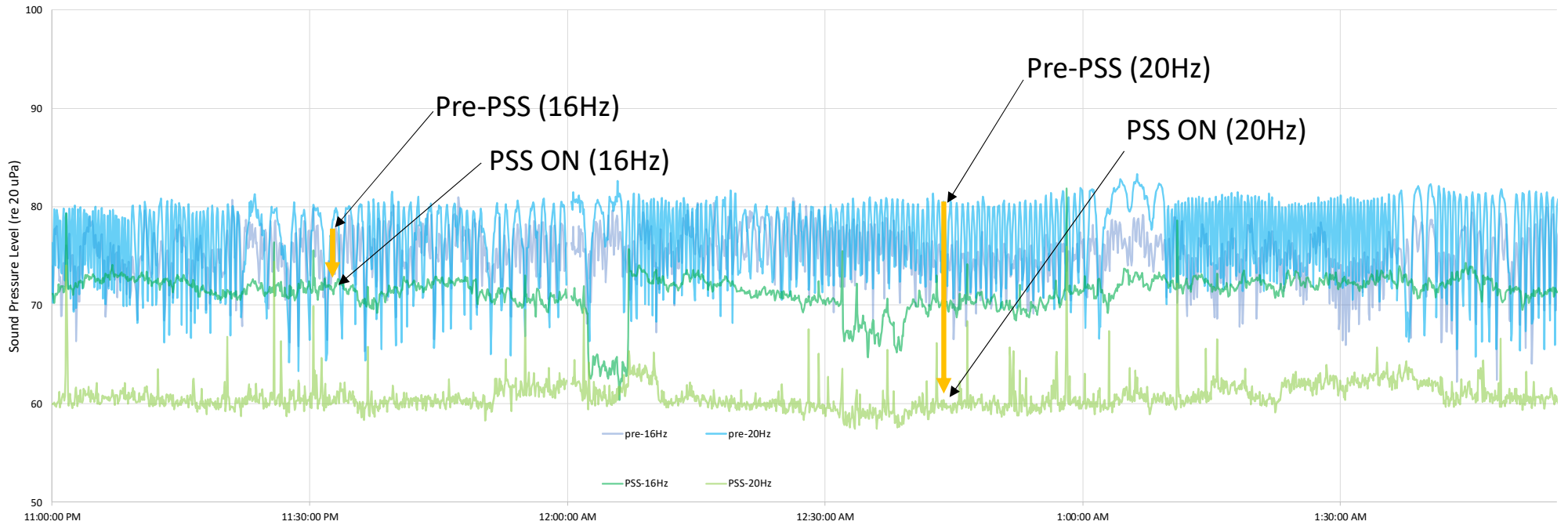
## Mitigation Measure

- Phase shifting system (PSS) installed within STP at EHO
- Unattended (MTEM) and attended monitoring complete to verify noise reduction
- PSS has largely eliminated pulsation
- Provided some reduction in noise/vibration levels at some receivers
- Still some ongoing issues being investigated

# BOTANICA



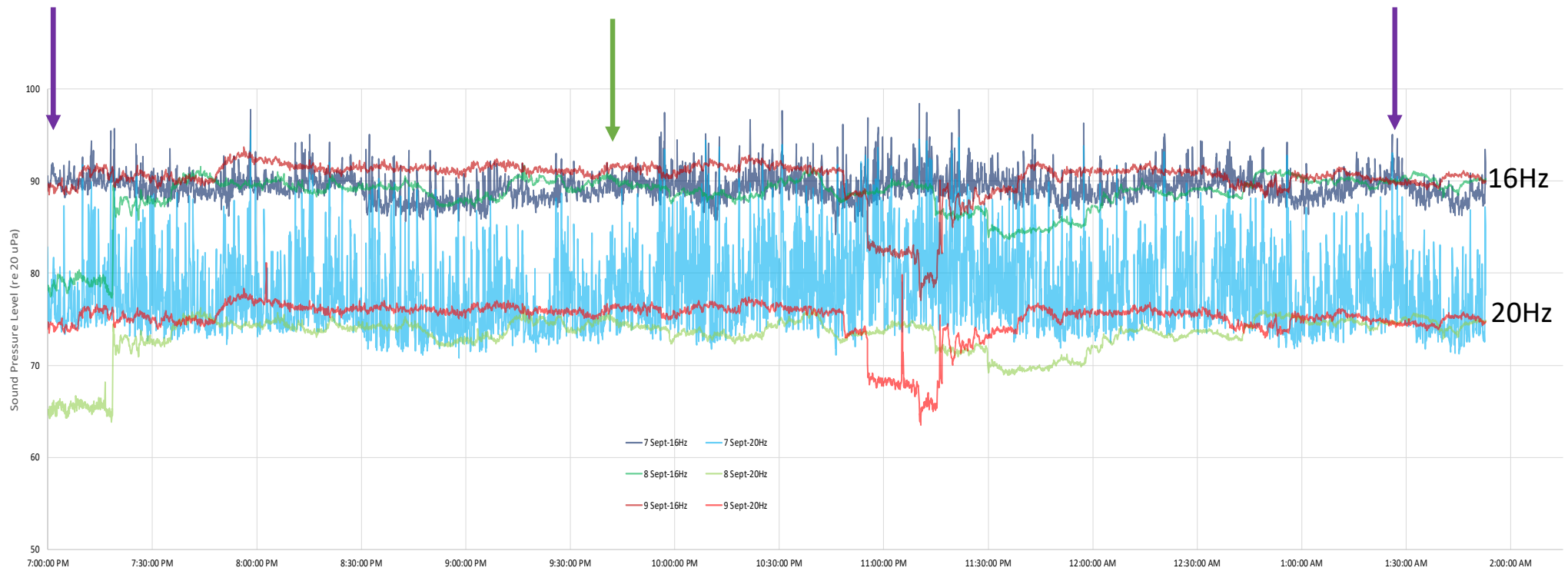
# HALLMARK



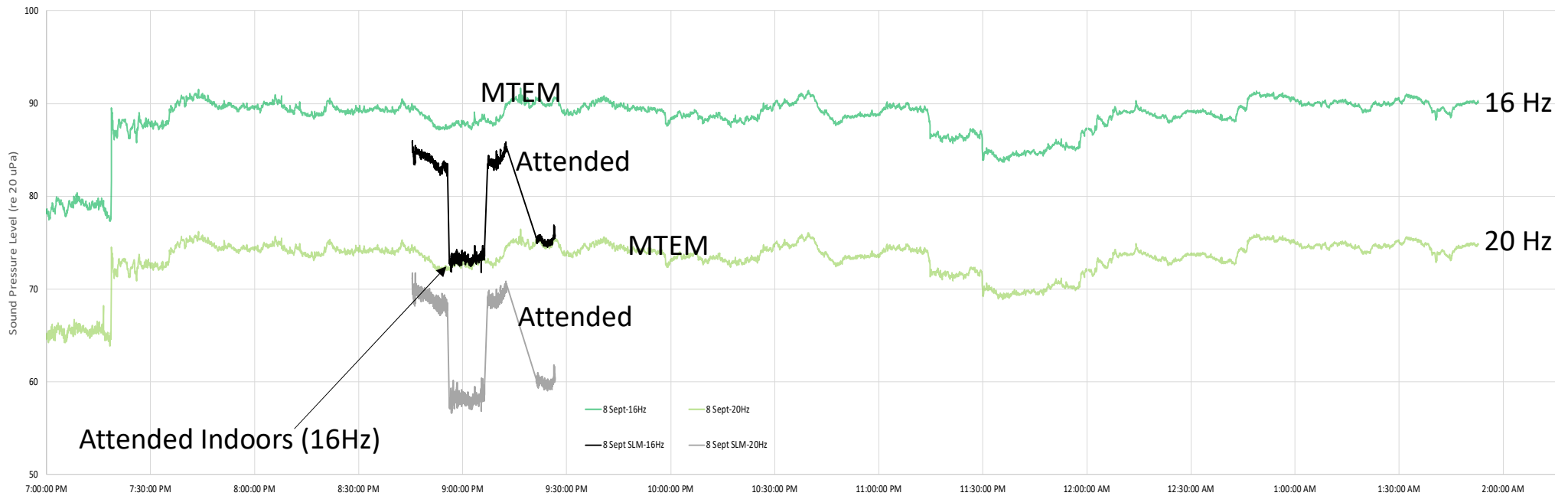
# BOTANICA 7, 8, 9 SEPT, PSS ON (1330-1900)



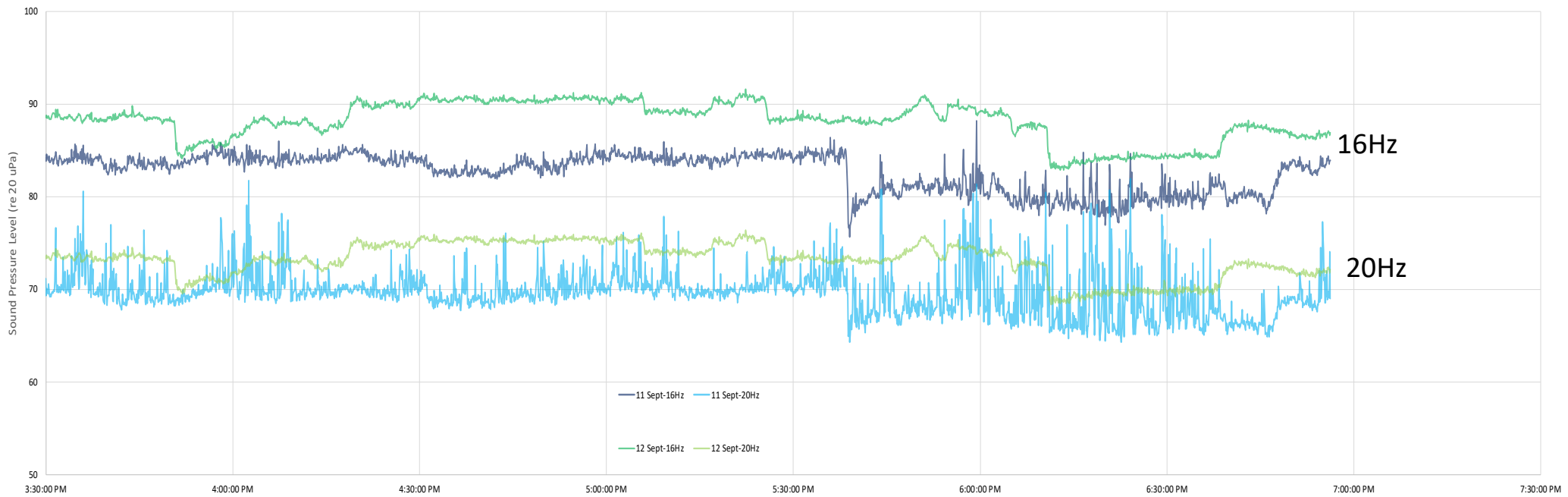
# BOTANICA 7, 8, 9 SEPT, PSS ON (1900-0200)



# BOTANICA 8 SEPT, PSS ON (1900-0200)



# BOTANICA 11, 12 SEPT, PSS ON (1530-1930)



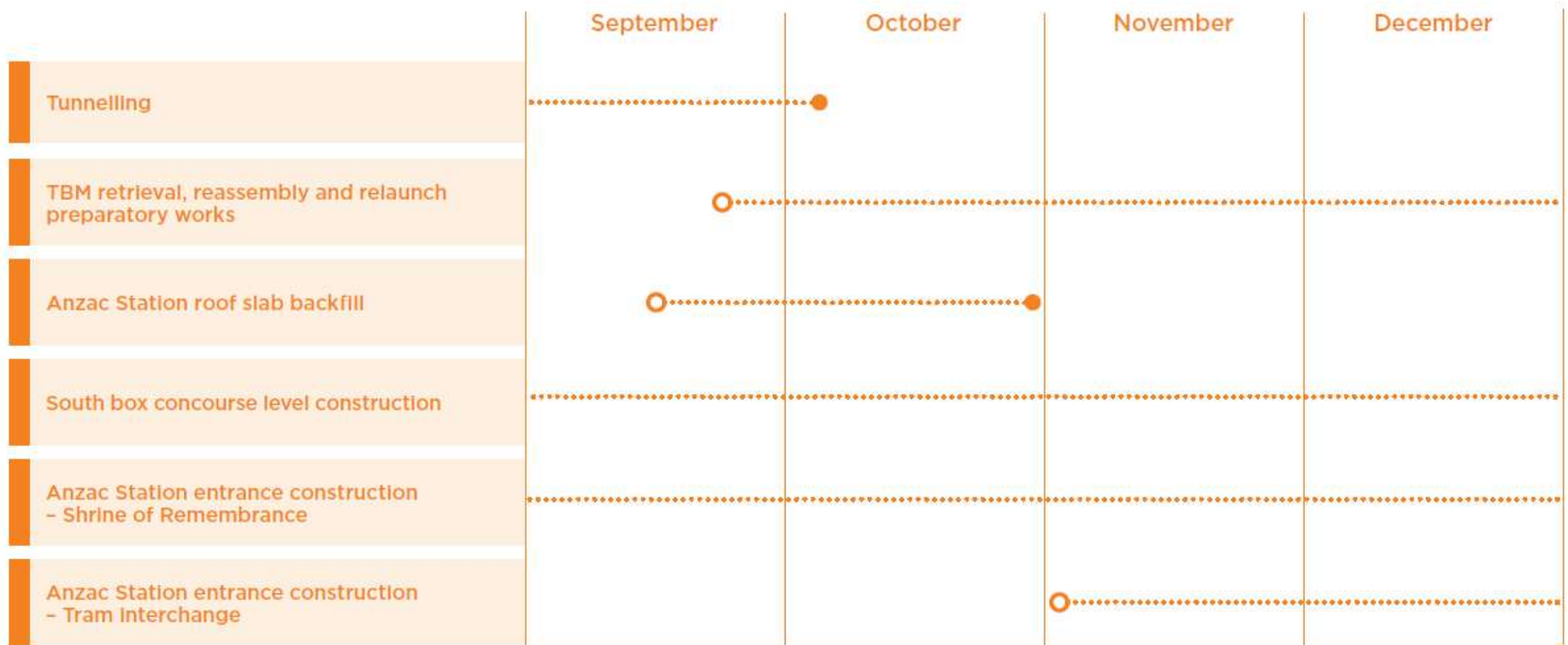
# BOTANICA 11, 12 SEPT, PSS ON (1900-0200)





# WORKS UPDATE

# ANZAC STATION PROGRAM



All dates current at the time of publication, however are subject to change.

## STATION ENTRANCE – SHRINE OF REMEMBRANCE

- CFA piles were installed at the station entrance in August, marking the completion of stage one piling
- Excavation down to 10m of the station entrance is now underway
- This involves progressive excavation, break back of piles and spraying shotcrete to support the excavation
- Excavation will be ongoing until the end of November



*Excavation underway at the station entrance*



## PILE CROPPER

- In an effort to reduce noise associated with pile breakouts, a *pile cropper* was trialled at the station entrance last week
- The pile cropper was ineffective in reducing noise due to the type of pile being broken out
- Team continue to look for ways to reduce noise as much as possible across the site



## MIDDLE BOX ROOF SLAB

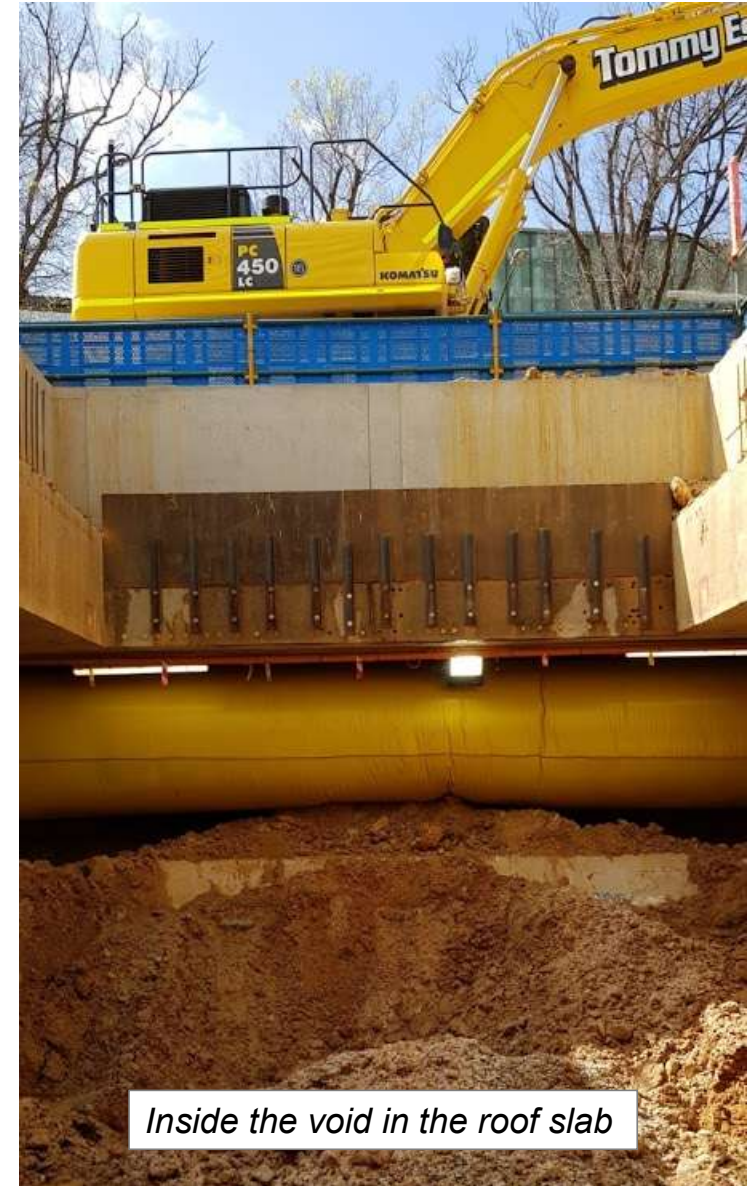
- The final section of Anzac Station roof is set to be poured this week, with steel reinforcements in place
- Following completion of the roof slab the area will be waterproofed and then backfilled.



*Steel reinforcements being installed ahead of the roof slab pour*

# SOUTH BOX EXCAVATION

- Excavation to concourse level is almost complete
- The area under the roof is constrained and ventilation is required
- Formwork, reinforcements and concreting works to construct the concourse will then commence and continue until mid-2021





# SOUTH BOX EXCAVATION



# INSIDE THE EXCAVATION







# MIDDLE & SOUTH BOX WORKS





# MIDDLE & SOUTH BOX WORKS



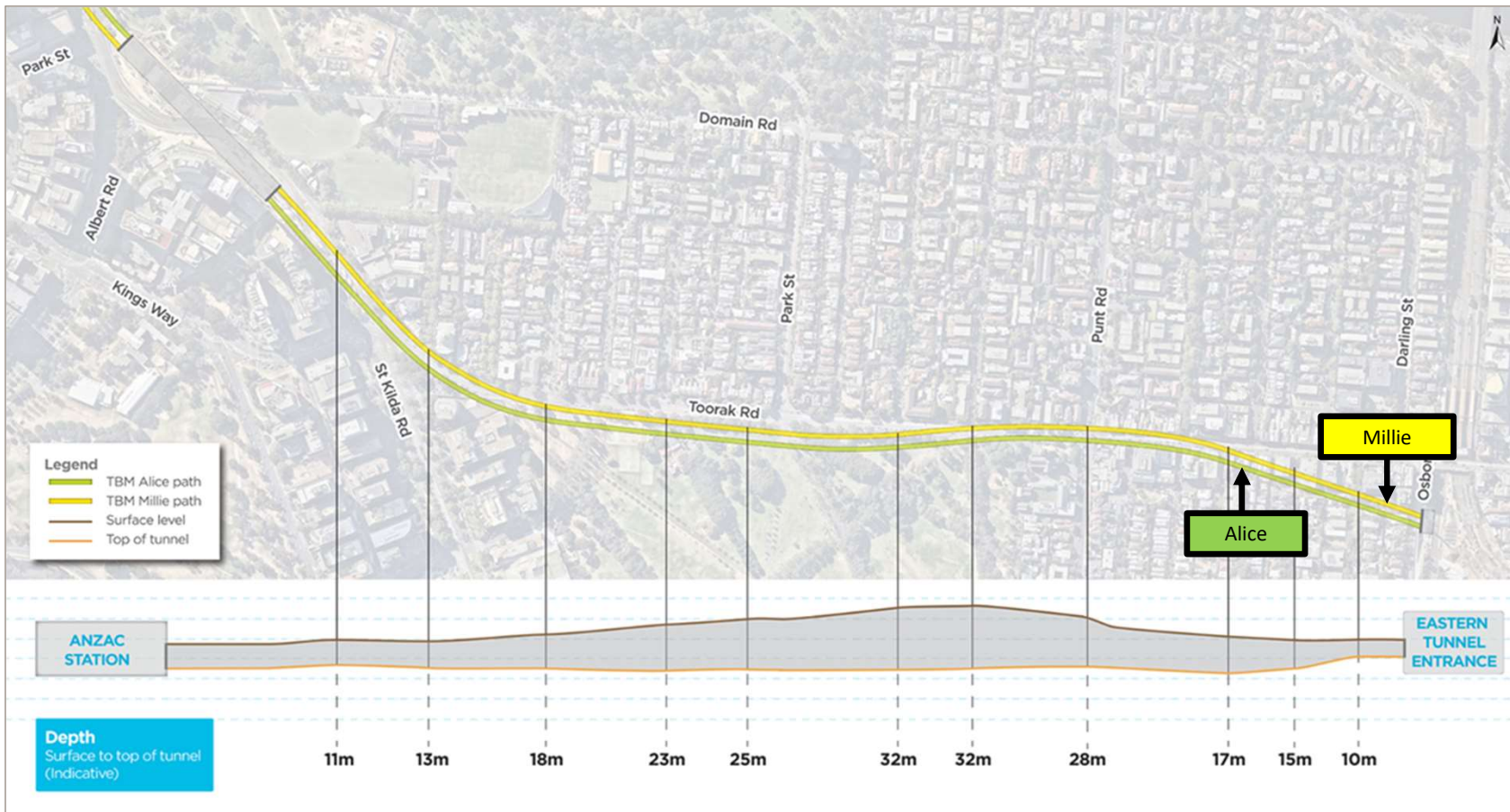
# TUNNELLING UPDATE

- Both TBMs are expected to complete their 1.7km journey from Domain to South Yarra in September
- Millie is expected to break through in South Yarra this week
- Alice remains approximately two weeks behind
- Each machine will be disassembled at the Eastern Portal before being transported back to Domain for reassembly and relaunch towards the CBD in early 2021



*The two stub tunnels at the Eastern Portal retrieval shaft, South Yarra*

# CURRENT TBM LOCATIONS



## NORTH BOX WORKS

- Preparatory works for the TBM relaunch to the CBD are underway
- The northern headwall which the TBMs will connect to has been constructed
- The ramp which the TBMs will be pushed down was also poured in early September
- TBM assembly will begin in the north box later in September



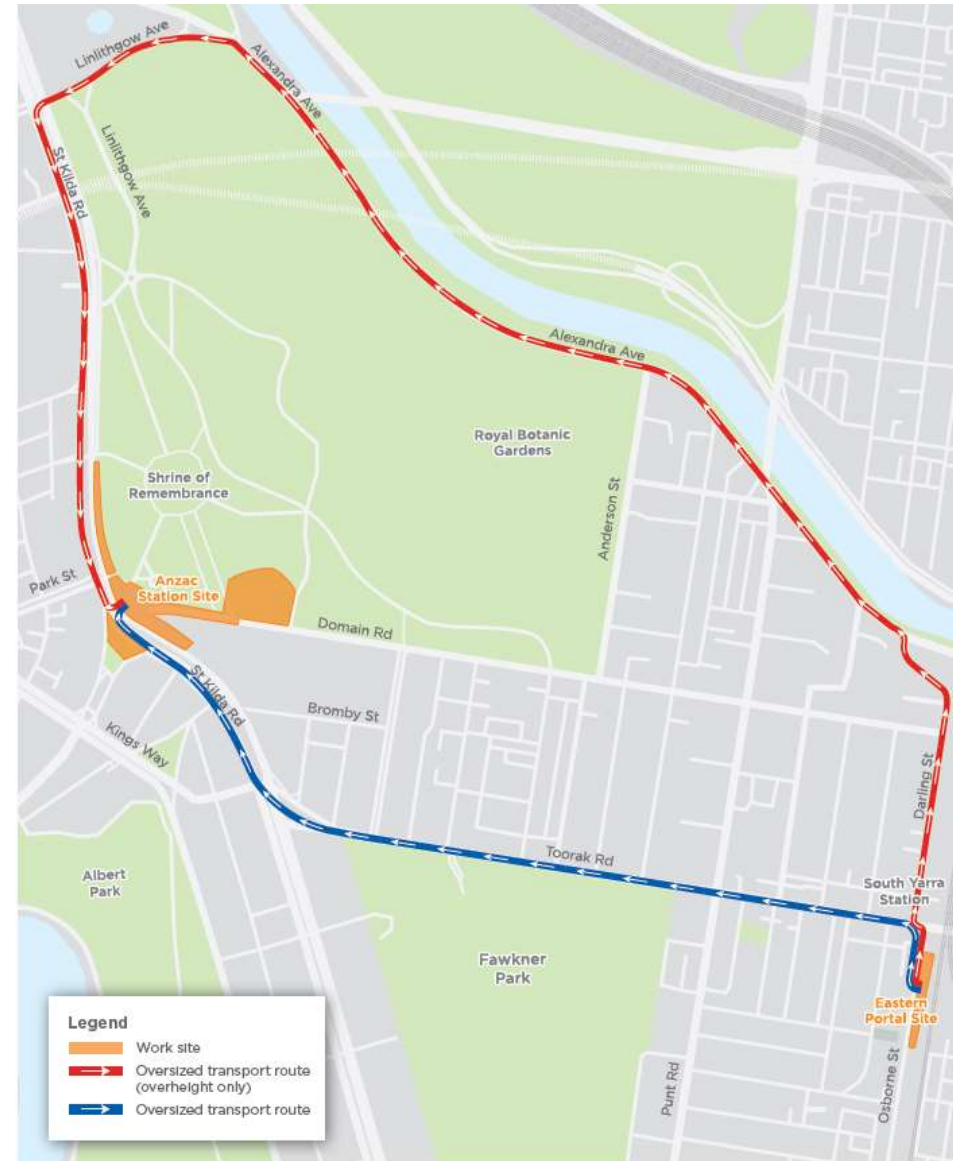
*The northern end of the Anzac Station box*

# TBM RETRIEVAL



# DELIVERY ROUTES

- A total of 20 oversized transports will take place over 15 nights between South Yarra and the Anzac Station site
  - 14 TBM parts will be transported back to the Anzac Station site via Toorak Road and St Kilda Road
  - 6 TBM parts are classified as over height deliveries and cannot travel underneath tram lines on Toorak Road. Over height deliveries will travel via Darling Street, Alexandra Avenue, Linlithgow Avenue and St Kilda Road
- 16 TBM parts will be pulled back through the completed tunnel, due to their smaller size



Indicative only



# UNLOADING OVERSIZED DELIVERIES

- All oversized deliveries will take place between 1am – 5am
- Some trucks need to be unloaded upon arrival. This will take inside the acoustic shed, using the gantry crane
- If there is not enough room to unload the parts in the shed, the pieces will be unloaded after 7am
- The first two TBM part deliveries will be transported from Footscray to Domain between 1am – 5am on Monday 21 September and must be unloaded immediately
- <https://metrotunnel.vic.gov.au/construction/domain/st-kilda-road-changes>



*An over height TBM part at the Anzac Station site in early 2020*

# CROSS PASSAGE CONSTRUCTION

## CROSS PASSAGE CONSTRUCTION

- Once TBM retrieval is complete, cross passage excavation will commence
- There are 26 cross passages across the Project's tunnel alignment, including six between Anzac Station and the Eastern Portal
- Each cross passage opening is 3.1m high and 2.4m wide and will be excavated traditionally using a 5-tonne excavator
- Soil will be transported to and removed from the Eastern Portal
- Cross passage construction between Domain and the Eastern Portal is expected to be completed mid-2021



*Cross Passage 2, between the Western Portal (Kensington) and Arden Station*

# ENVIRONMENT UPDATE

# TRAM BOX PILING

## What's involved:

- CFA piling in the tram box
- Middle box concrete pours
- Shrine FRP

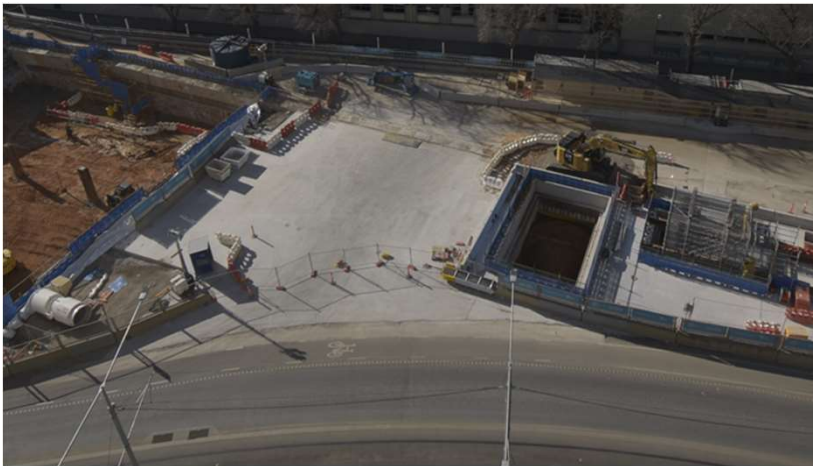
Building	Unmitigated predicted noise level dB LAeq(15min)	Measured level dB LAeq (15min) MTEM
The Domain	78	71
The Botanica	66	64
Hallmark Apartments	75	63
Domain Hill	76	64

*\* Modelled noise levels are unmitigated*

# MIDDLE BOX - EXCAVATION

## What's involved:

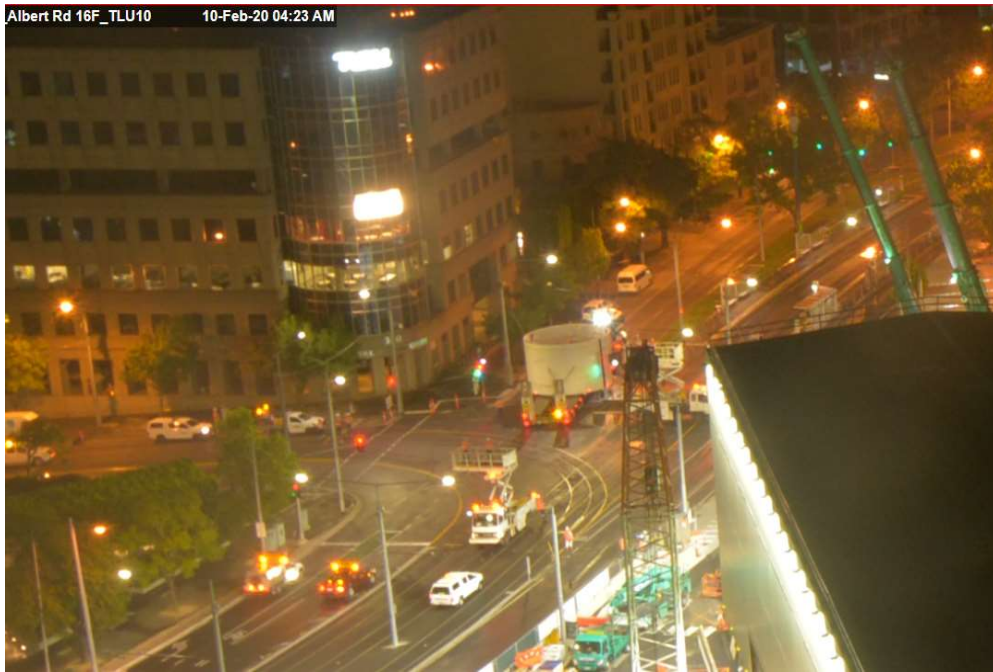
- Excavating soil beneath the roof slab



Building	Unmitigated predicted noise level dB <u>LAeq(15min)</u>	Measured level dB <u>LAeq (15min)</u> MTEM
The Domain	67	70
The Botanica	63	69
Hallmark Apartments	65	63
Domain Hill	64	63

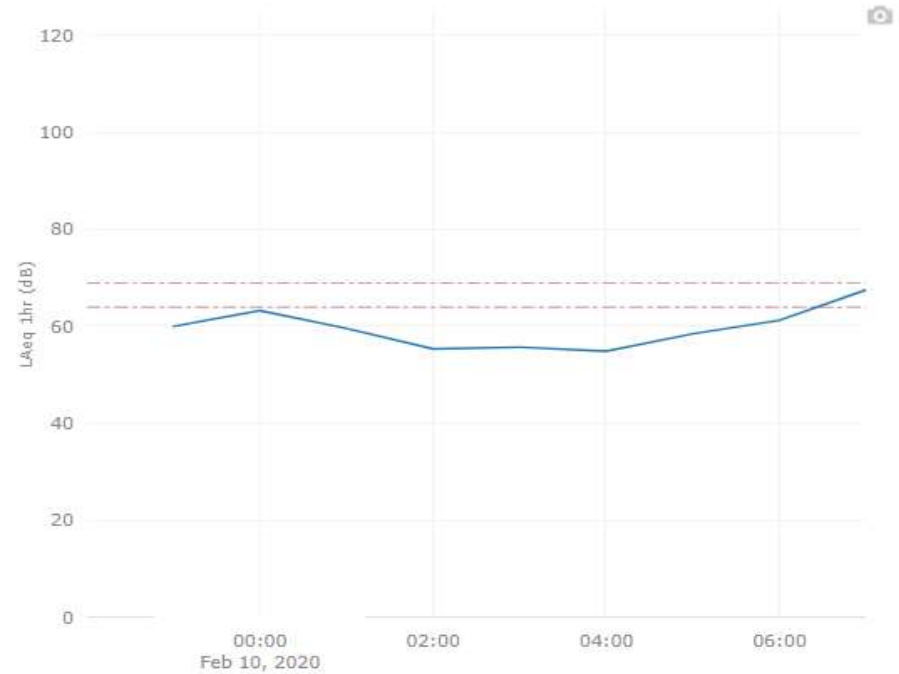
\* Modelled noise levels are unmitigated

# NOISE MONITORING – OOH TBM DELIVERY



TBM Tailskin Delivery 10/02 – 4:00am

DEVICE DATA



Noise Monitoring – The Domain

# QUESTIONS