



# TOWN HALL STATION COMMUNITY REFERENCE GROUP

CROSS YARRA PARTNERSHIP  
FRIDAY 11 DECEMBER 2020





## TOWN HALL STATION COMMUNITY REFERENCE GROUP

---

**Jodie Barrington**, CBD Precinct Communications and Stakeholder Engagement Lead, CYP D&C

**Kenny Soh**, Town Hall Station Area Manager, CYP D&C

**Blythe Chidgey**, Town Hall Station Stakeholder Engagement Manager, CYP D&C

**Ryan Martin**, Senior Tunnels Engineer - West Precinct, CYP D&C



Construction partner:



# AGENDA

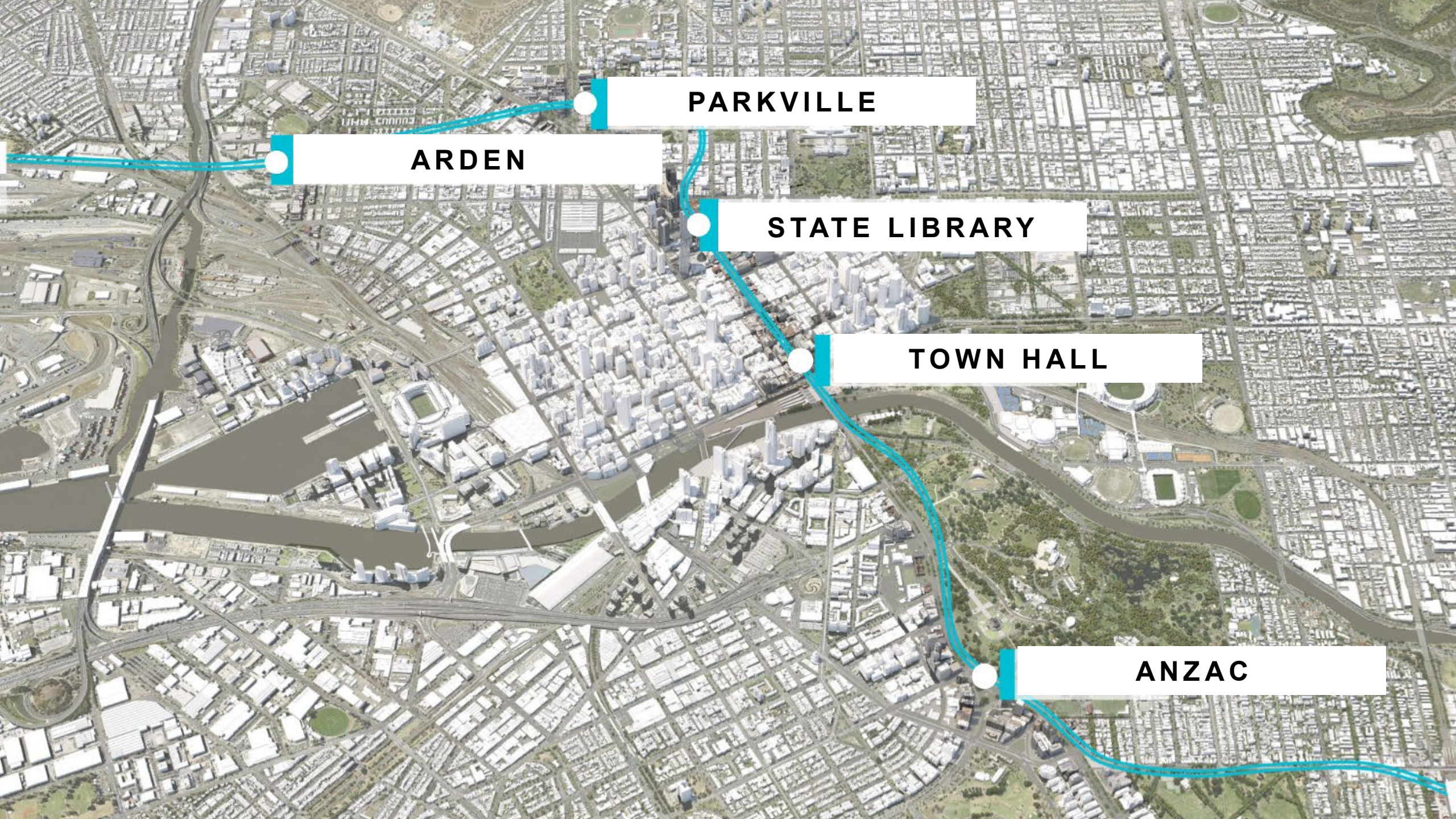
1. Town Hall Station update
2. Creative program update
3. TBM tunnelling update

# PROJECT OVERVIEW



Presenter: Jodie Barrington





**ARDEN**

**PARKVILLE**

**STATE LIBRARY**

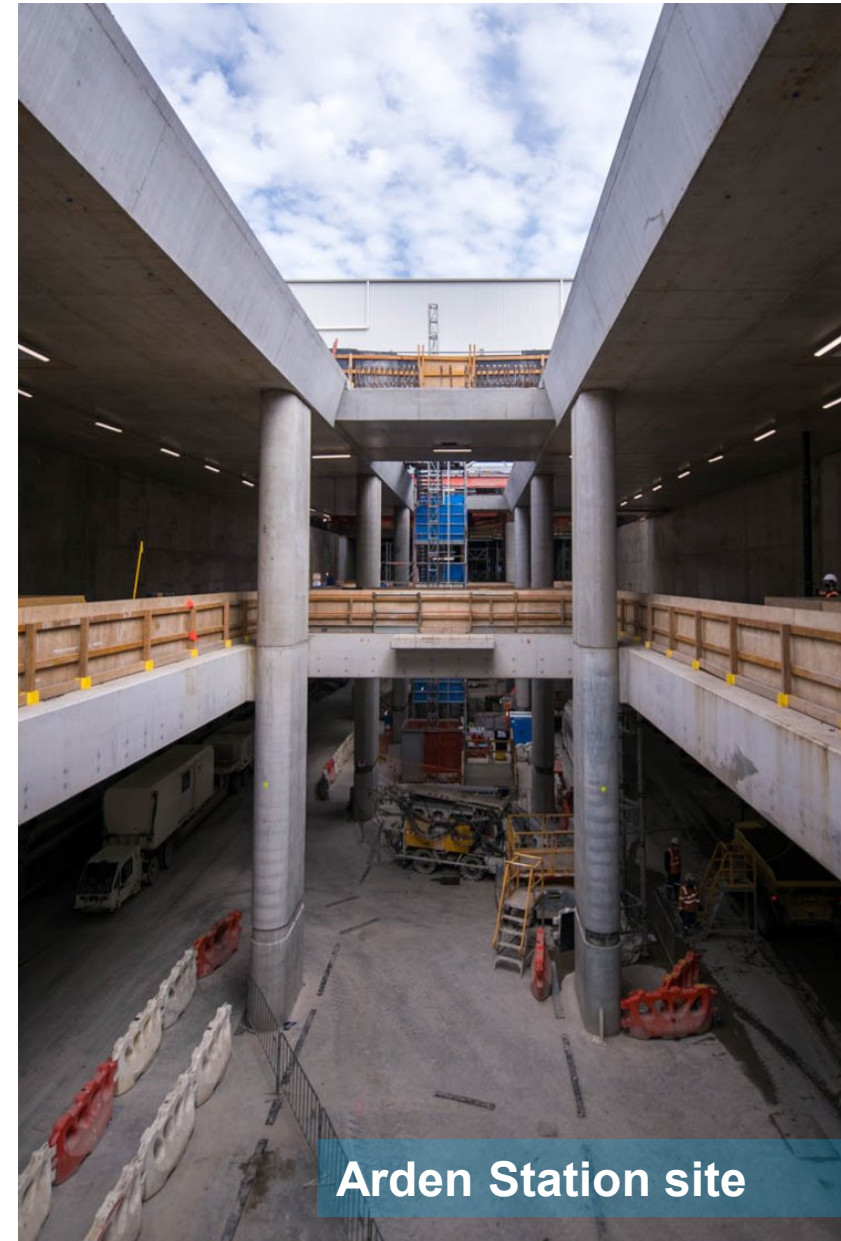
**TOWN HALL**

**ANZAC**

# ARDEN

## Arden Station and surrounds

- Concourse slab complete
- Four pours remain to complete the station box roof slab (by March 2021)
- Station box inner lining and core walls at 90% complete
- Construction of Arden Station building to commence early 2021.



# PARKVILLE



- At the Grattan Street east site, works have commenced on the B1 level. Once complete, there will be four underground levels within the station
- At the Grattan Street west site, the team is completing service relocation works, and preparing for road reinstatement works for the southern entrance works
- In 2021, the work site will change to construct the northern entrance, adjacent to The Royal Melbourne Hospital.



# STATE LIBRARY



- Excavation of the trinocular cavern was completed earlier this week
- Top-down construction works are continuing at the La Trobe Street site
- A scrubber (ventilation system) was recently installed at the Little La Trobe Street site to support excavation works.



# ANZAC

- Excavation for the Shrine of Remembrance station entrance is complete
- Excavation to the concourse level of the station box is continuing, with three of the 10 pours required to construct the concourse slab now complete
- TBM Alice's gantry pieces will be pulled back through the completed tunnel. The team has begun to reassemble TBM Alice in the Anzac Station box.



# TOWN HALL STATION UPDATE



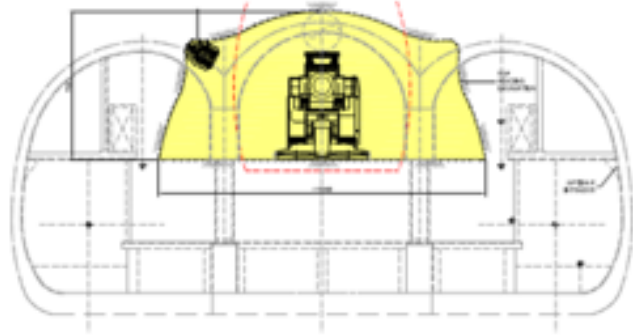
Presenter: Kenny Soh



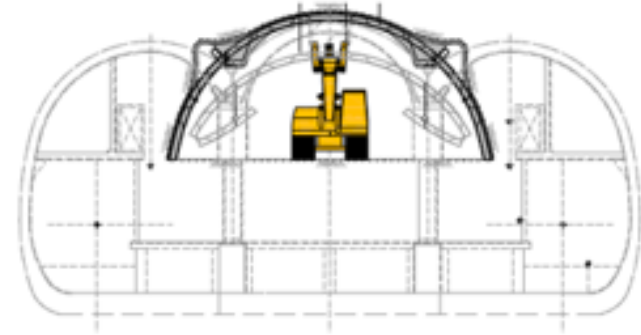


- Excavation of the central cavern is complete
- 100,000 cubic metres of excavated material removed
- 12,500 cubic metres of shotcrete sprayed
- Platform rail tunnel excavation to commence in early 2021.

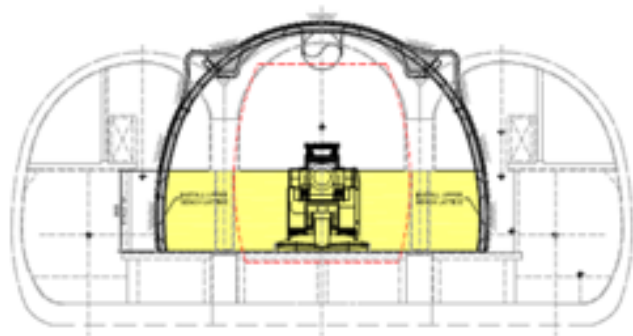
# TRINOCULAR CAVERNS



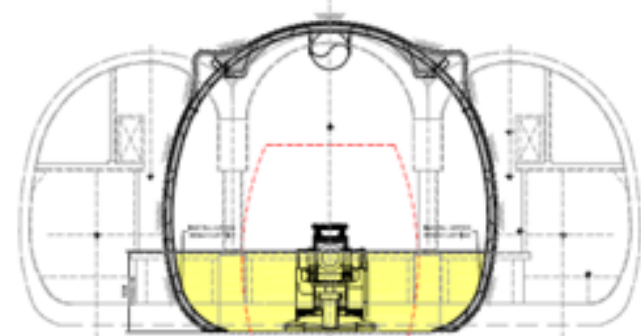
Stage 1 – Station Platform tunnel heading excavation



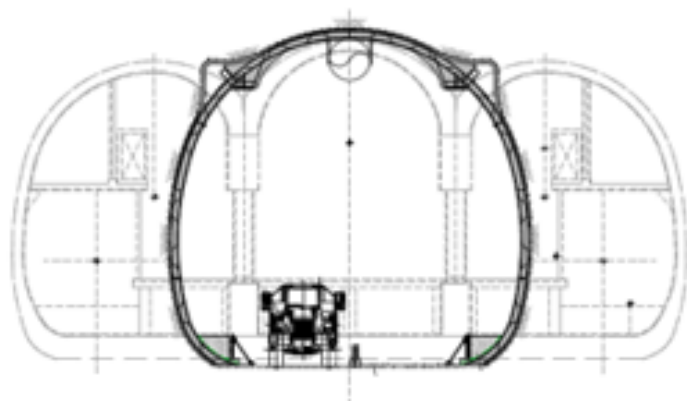
Stage 2 - Positioning arch installation



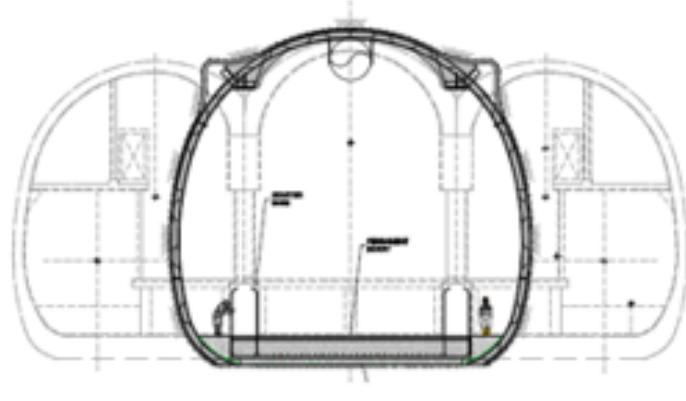
Stage 3 - Station platform upper bench excavation



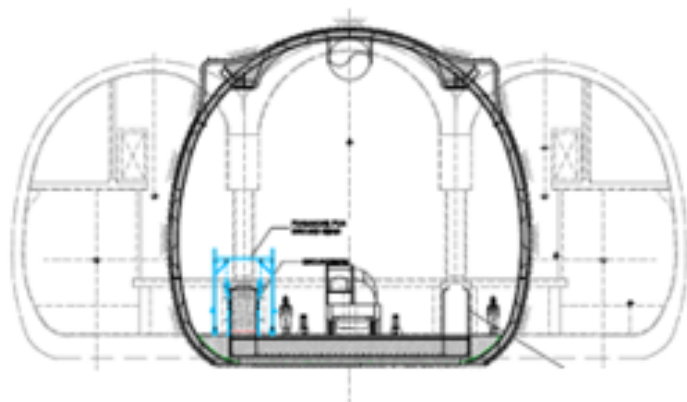
Stage 4 – Station platform lower bench excavation



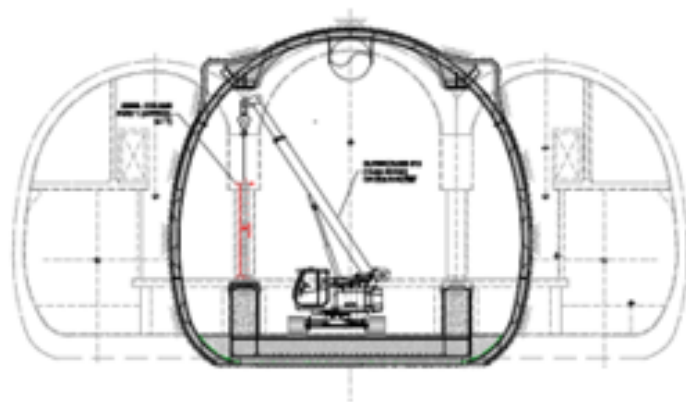
Stage 4a – Prep work for construction of invert slab



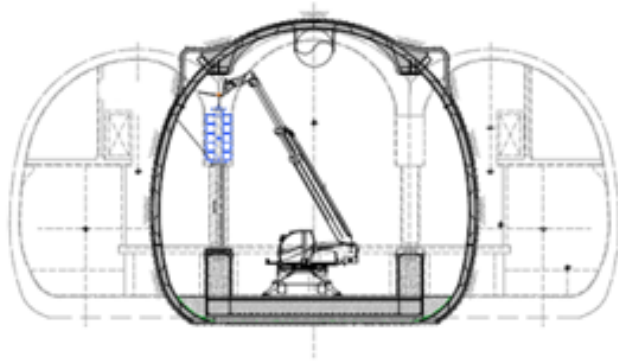
Stage 4b – Invert construction, waterproofing and reo



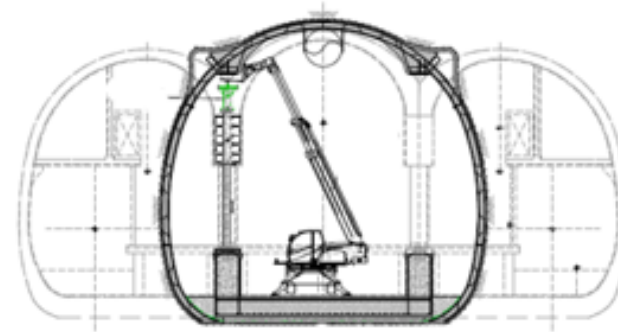
Stage 5 – Installation of drained trinocular support pre cast element



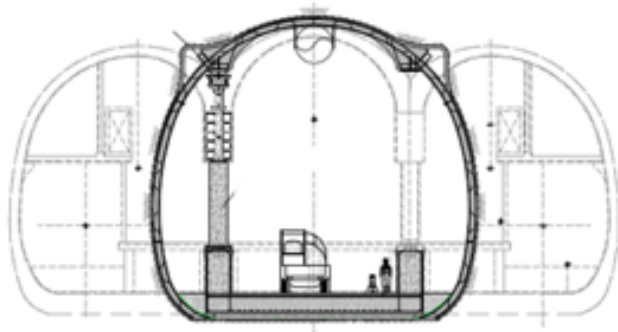
Stage 6a – LHS Steel tower, part 1



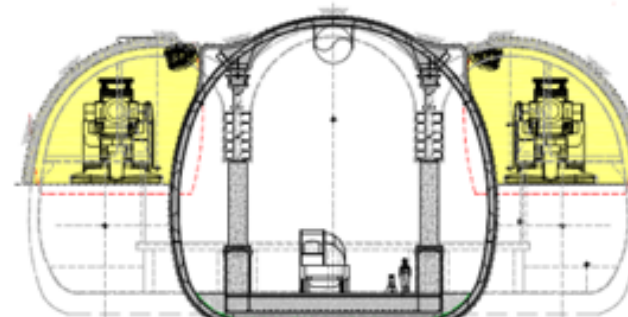
Stage 6b - LHS steel tower part 2



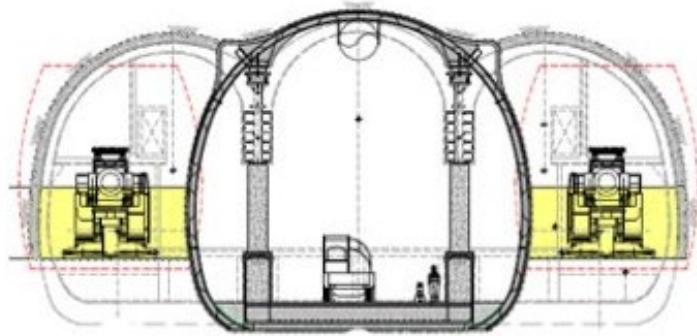
Stage 6c – LHS Steel tower, part 3



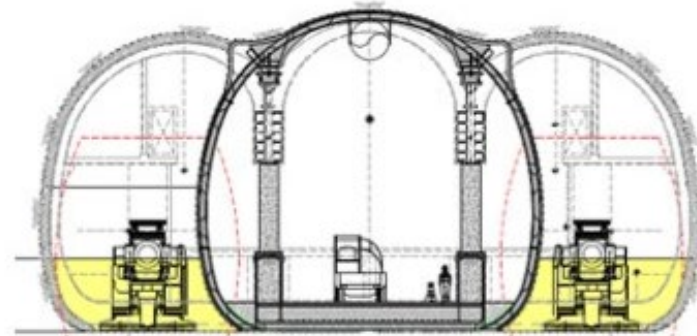
Stage 7 – Installation of grout pad and permanent column concreting



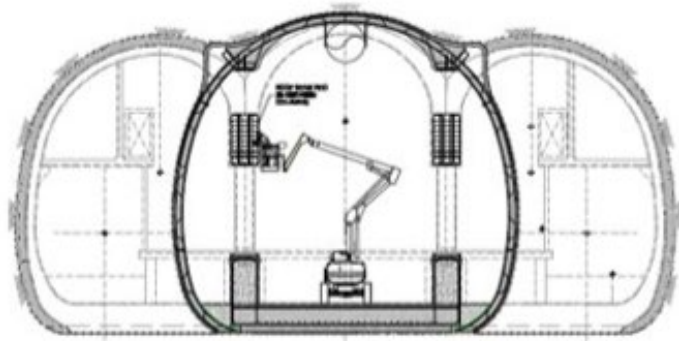
Stage 8 – Eastbound / Westbound top heading excavation



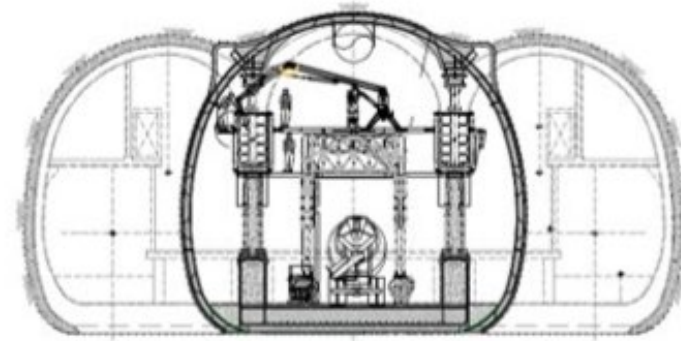
Stage 9 – Eastbound / Westbound upper bench excavation



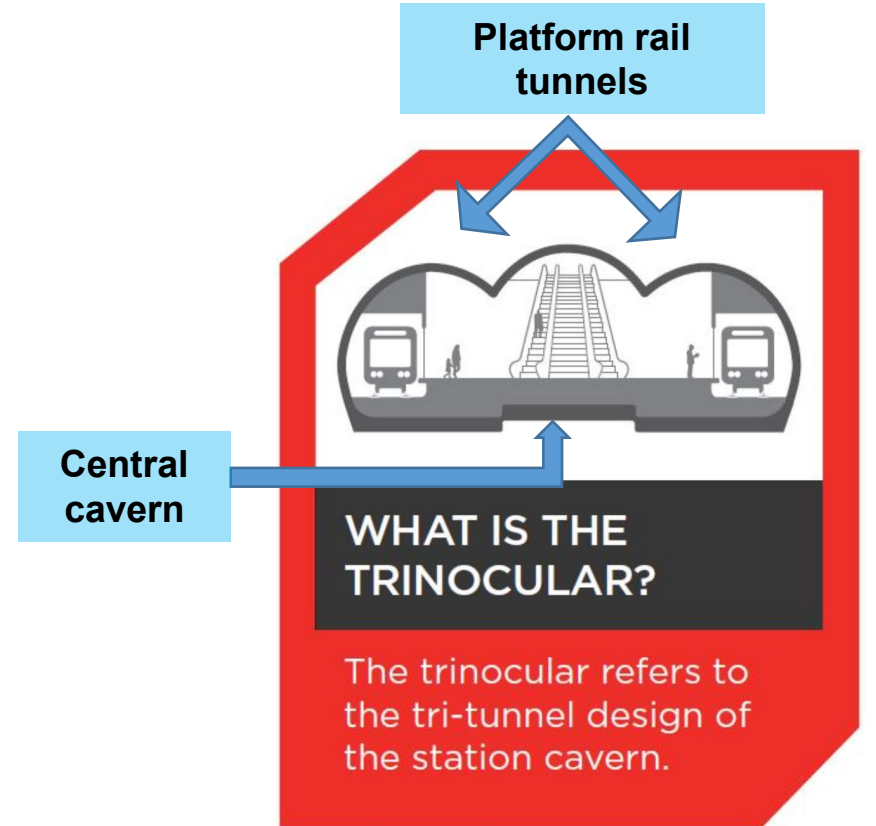
Stage 10 – Eastbound / westbound lower bench excavation



Stage 11 – Roof beam reo in between columns



Stage 12 - Roof beam pouring









Ground beam installation works have commenced

Gantry cranes installed

- The full extent of the central cavern has been handed over to the structures and lining team to commence the construction of the underground station platform



VIDEO





**FLINDERS QUARTER**



- Ground floor slab now complete
- More than 3,000 cubic metres of concrete poured to construct the slabs, walls and columns
- Excavation beneath ground floor slab continuing.

# FLINDERS QUARTER



Activity	Dec	Jan	Feb	Mar	Apr	May
Top-down construction works						

# FLINDERS QUARTER – OUT OF HOURS WORKS

## **Deliveries (ongoing)**

- Monday to Saturday, 5am to 7am
- Monday to Friday, 6pm to 10pm

## **Steel fixing, waterproofing and formwork installation (Shaft B)**

- Monday to Friday, 7am to 10pm
- Sundays, 8am to 4pm (as required)

## **Permanent concrete structure installation (Shaft B)**

- Monday to Friday, 7am to 12am (concrete pours, as required)
- Monday to Fridays, 6pm to 7am (concrete finishing works, as required)

## **Excavation (Shaft B)**

- Monday to Friday, 7am to 8pm
- Saturdays, 7am to 5pm
- Low noise works will continue between 8pm and 10pm (Monday to Saturdays)

## **Excavated material removal**

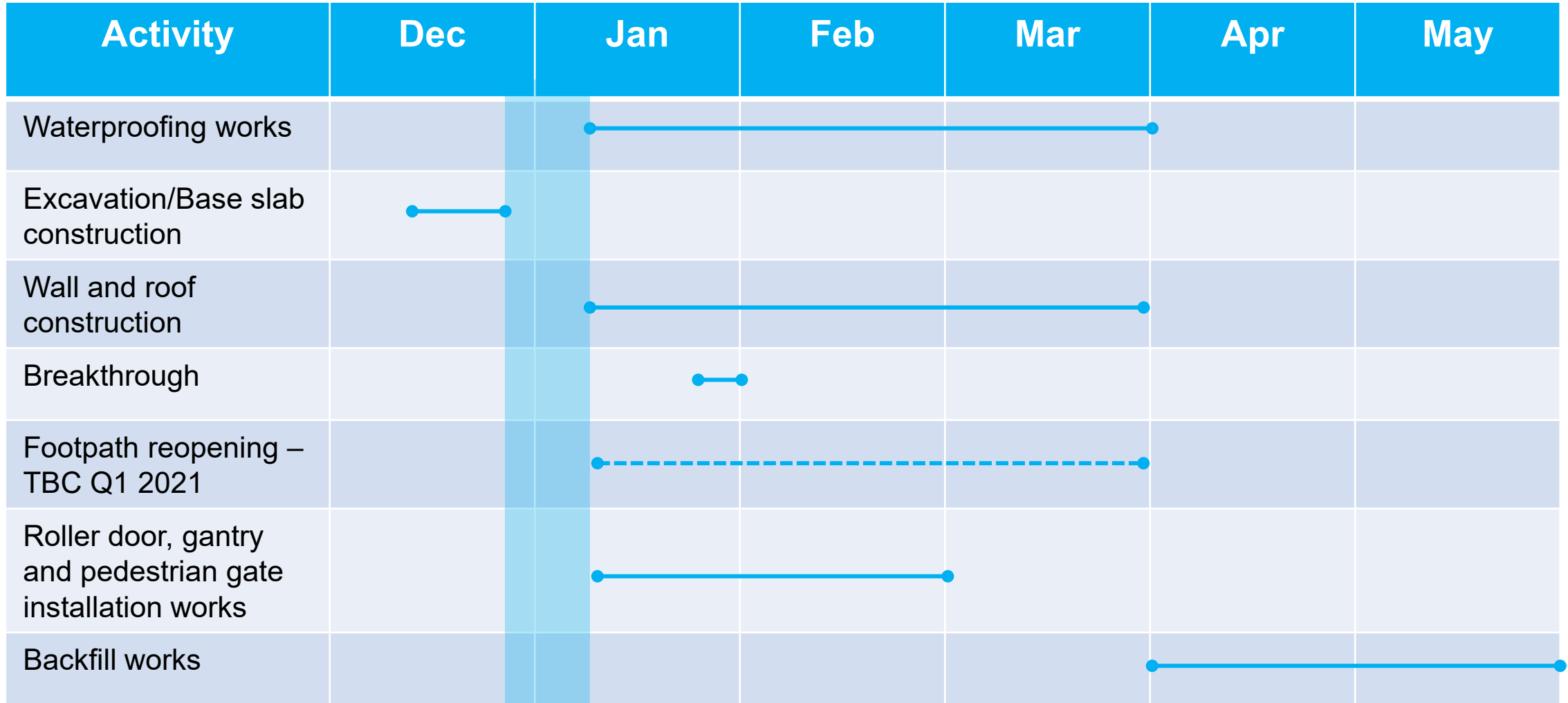
- Monday to Sunday, 6:30am to 10pm



**FLINDERS LINK**



# FLINDERS LINK WORKS UPDATE





FOOTPATH  
CLOSED

← Federation Square  
NGV Australia, The Atrium  
(via Hosier Lane crossing)

# FEDERATION SQUARE

# FEDERATION SQUARE WORKS UPDATE

## Federation Square tunnelling and excavation

- 24 hours, Monday to Sunday

Activity	Dec	Jan	Feb	Mar	Apr	May
Shaft excavation (Shaft A)						
Roadheader tunnelling						



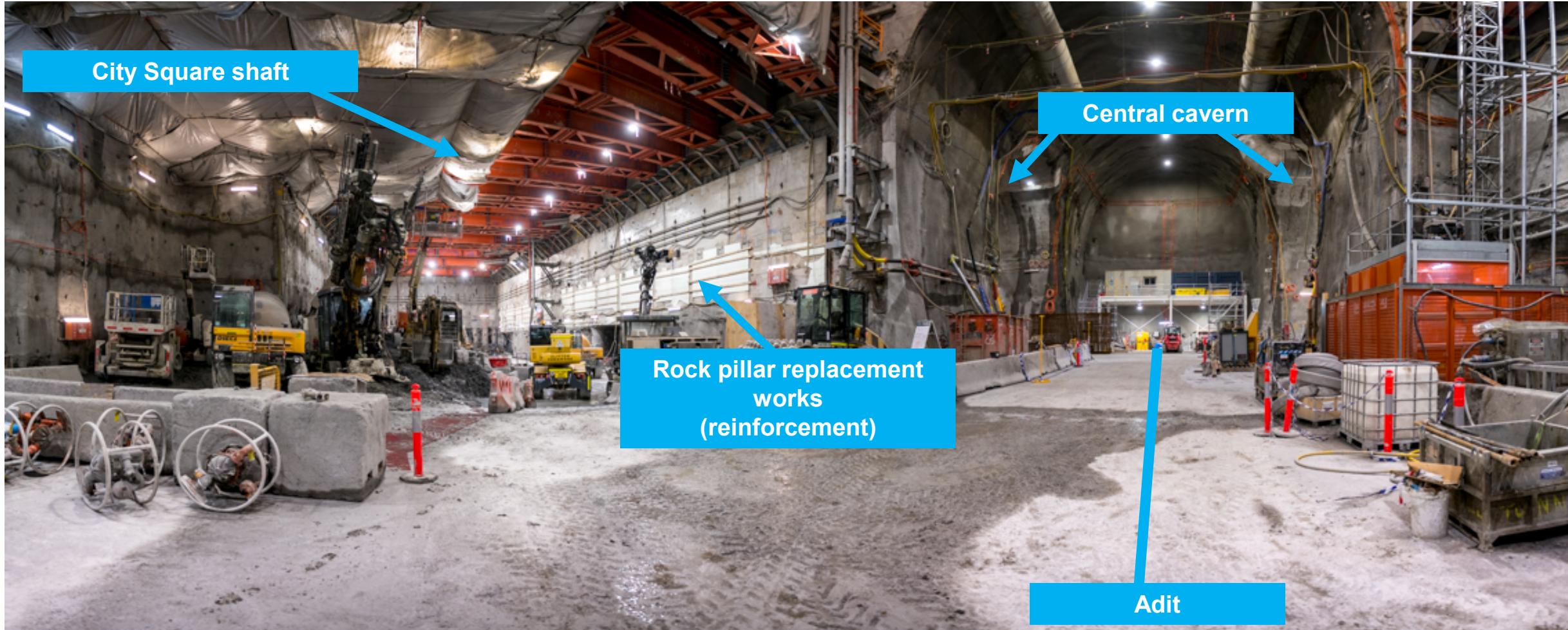
Despite background influences, attended monitoring shows a minimum 10dB reduction from the recent scrubber attenuation that has been implemented onsite.

Monitoring undertaken on 08/12/20.

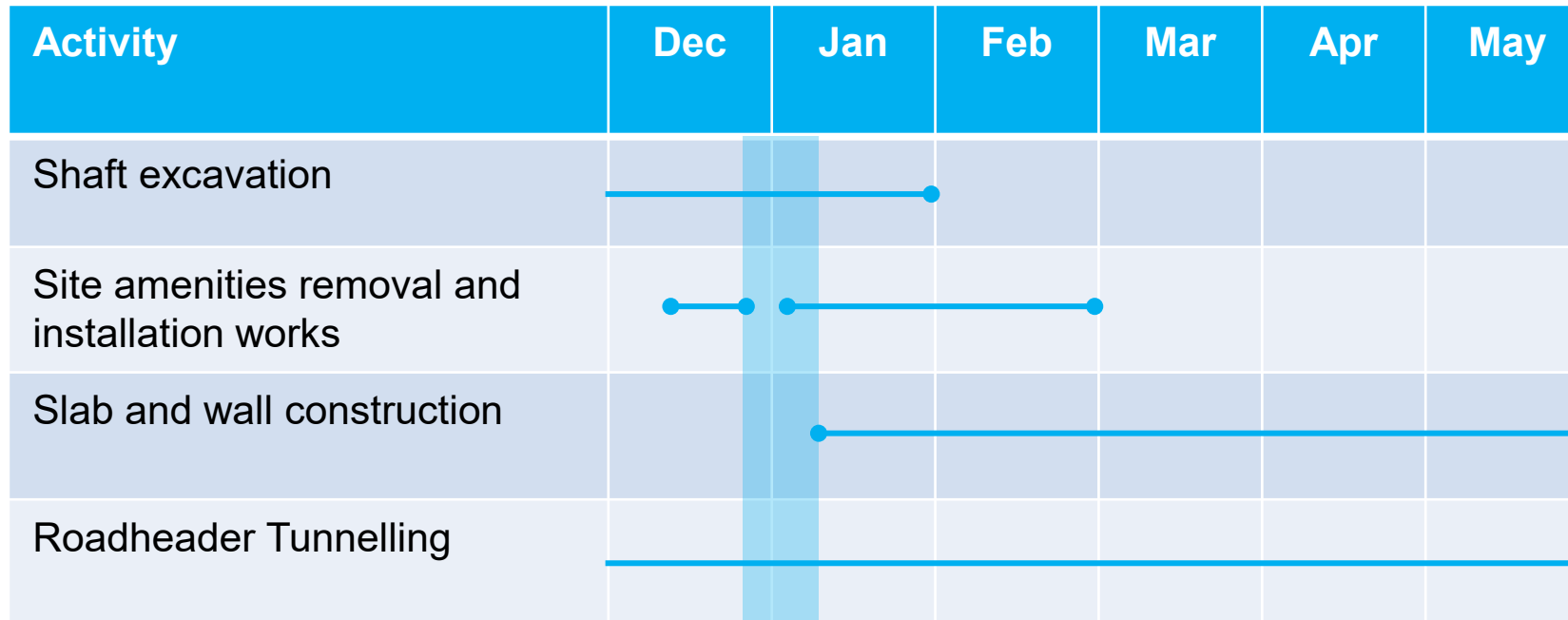
		04/09/20	08/12/20
Location	Description	LAeq (5min)	LAeq (less local interference)
1	Flinders Street Station	76.2dBA	66dBA
2	Young and Jacksons	71.8dBA	64-67dBA
3	St Pauls	71.4dBA	66-68dBA
4	ACMI	64.7dBA	60-63dBA



**CITY SQUARE**



# CITY SQUARE WORKS UPDATE



# CITY SQUARE– OUT OF HOURS WORKS

## **Excavation and platform construction**

- Monday to Sunday, 24-hours

## **Site amenity removal works**

- Monday to Friday, 7am to 6pm
- From Wednesday 16 to Thursday 17 December (Friday 18 December contingency), 6pm to 5am

*Flinders Lane closures between 8pm and 5am from Wednesday 16 to Thursday 17 December (Friday 18 December contingency)*

## **Site amenity installation works**

- Monday to Friday, 7am to 6pm (from Wednesday 6 January to late-February)
- Monday to Friday, 6pm to 5am (For up to three nights)

*Flinders Lane closures between 8pm and 5am for up to three nights*



# CREATIVE PROGRAM UPDATE









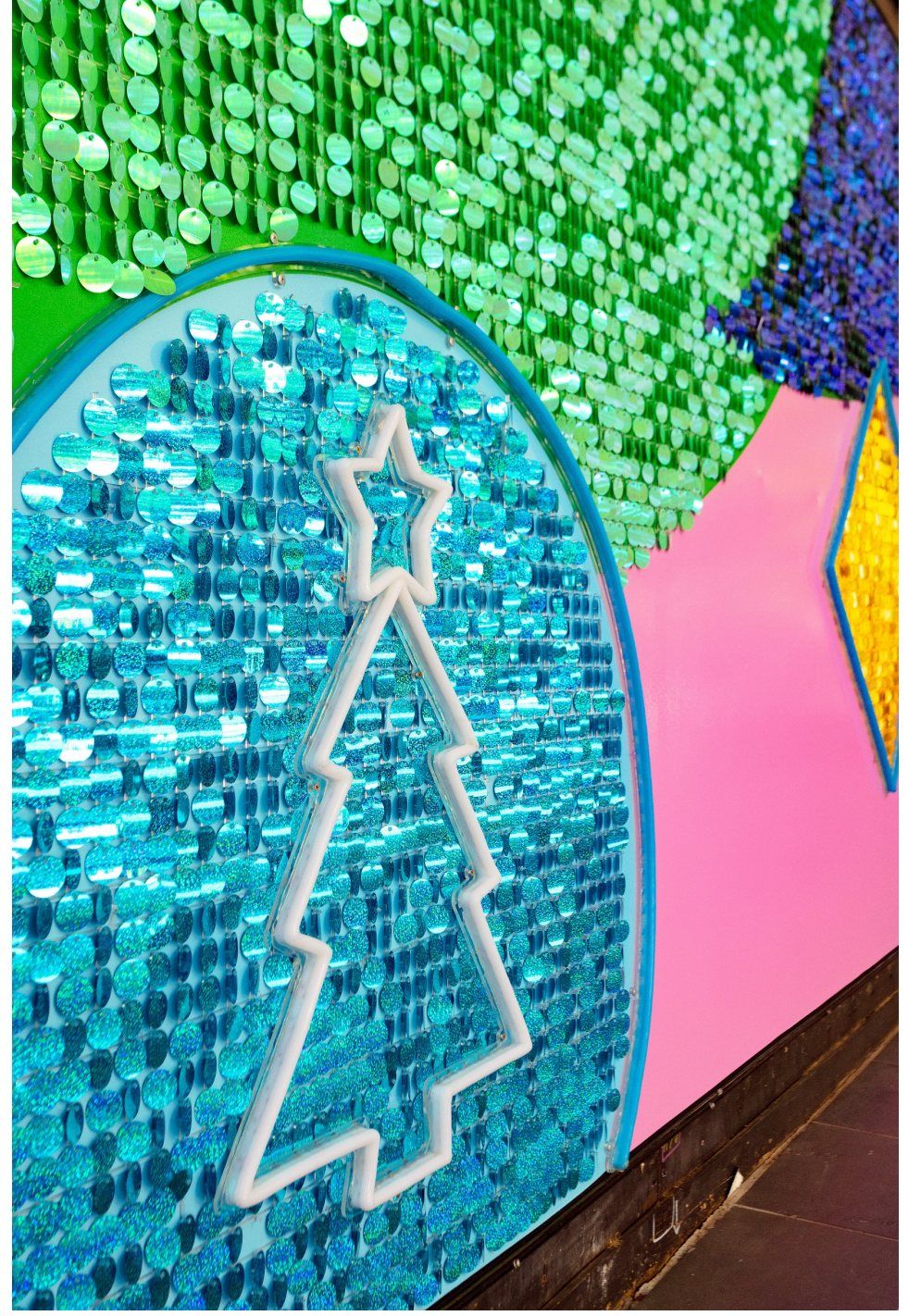
SHOP 9

EVENTS • SHOP • CREATIVE SPACE

THE  
**METRO TUNNEL**

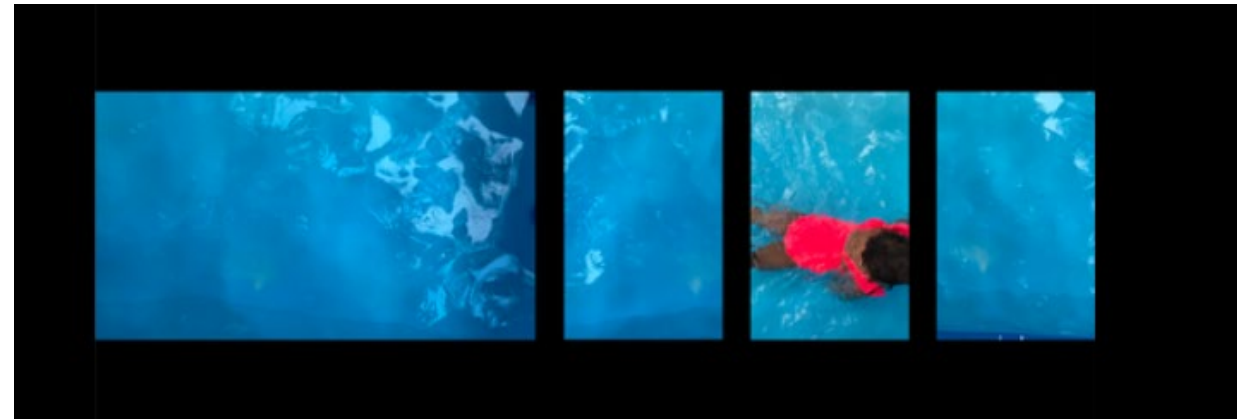
CREATIVE DEPT.





# UPCOMING

- Working with businesses in Degraves St to provide extra greenery and uplift
- Late December – new banners installed on Fed Square and City Square sheds (facing Collins St). Part of city revitalization with City of Melbourne.
- January at City Square hoarding - First Nations filmmaker John Harvey artwork to celebrate ACMI's reopening
- January – City Square shed artwork will begin to be painted
- February – Photo 2021 launch with new photographic works across City Square, Scott Alley and in CBD North.



Still image from John Harvey's 'Canopy' to be on permanent display at ACMI

# TBM TUNNELLING UPDATE



Presenter: Ryan Martin



## **TBM 1 (Joan)**

- Broke through at Parkville Station 27 August 2020
- Relunched from Parkville Station 15 October 2020
- Progress to date:
  - 477 rings
  - 820m

## **TBM 2 (Meg)**

- Broke through at Parkville Station 19 September 2020
- Relunched from Parkville Station 4 November 2020
- Progress to date:
  - 220 rings
  - 384m

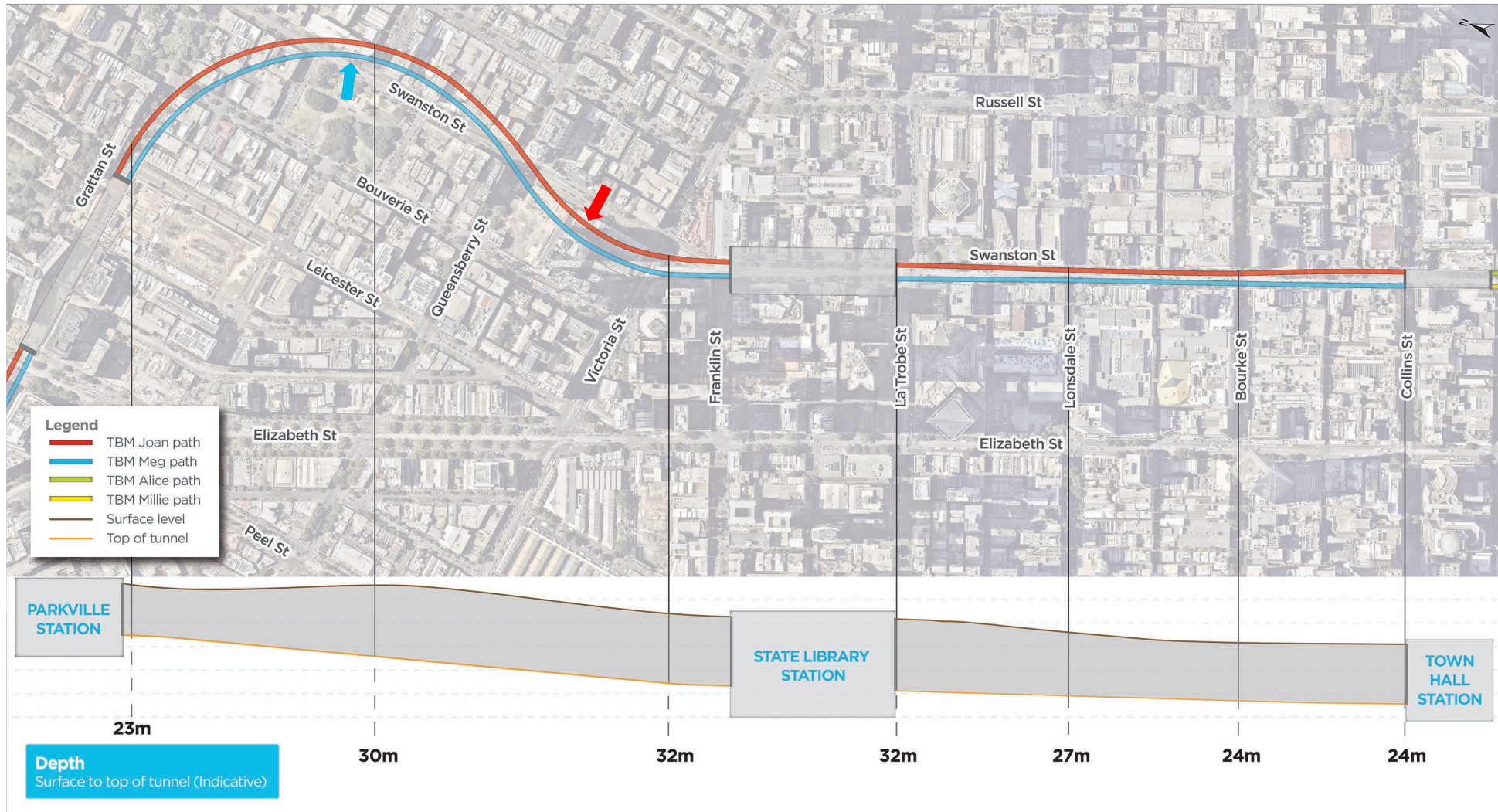
## **TBM Joan**

- Currently programmed to break through at the Town Hall Station site April/May 2021

## **TBM Meg**

- Currently programmed to break through at the Town Hall Station site May/June 2021

# TBM PROGRESS – PARKVILLE TO CBD



# TBM BREAK THROUGH PROCESS



TBM Joan break through at Parkville – 27 August 2020



TBM Meg break through at Parkville – 19 September 2020

# TBM TRANSFER PROCESS



TBM Meg being transferred through the Parkville Station box



## Communications to potentially impacted properties

- Invitation to information session/s
  - *current sessions being held online in accordance with COVIDSafe protocols*
- TBM arrival four week out letter
  - Including 'noise and vibration from TBM tunnelling' fact sheet; tunnel depth and alignment map
- TBM 1 arrival letter (includes approx. dates TBM is expected to pass a specific property)
  - Distribution of letters to date: as far as Victoria Street
- TBM 2 arrival letter (includes approx. dates TBM is expected to pass a specific property)
  - Distribution of letters to date: as far as Pelham Street
- One-on-one phone/video briefings as required
- Project Information Line (1800 105 105) and [CYP@metrotunnelcyp-dc.com.au](mailto:CYP@metrotunnelcyp-dc.com.au)
- Regular updates to Metro Tunnel website and social media

# WE'RE TAKING A BREAK

- The Metro Tunnel Project will take a break from construction from Wednesday 23 December 2020 until Monday 11 January 2021.
- Works to install site amenities at the City Square site will recommence on Wednesday 6 January 2021.
- Other minor works may take place during this period if required.
- During the closure, the site will be secured with regular security patrols, and members of the project team will be on call to respond to any issues that arise. If you have any queries, please phone the Metro Tunnel Project Information Line on 1800 105 105.

# QUESTIONS