

DOMAIN COMMUNITY REFERENCE GROUP

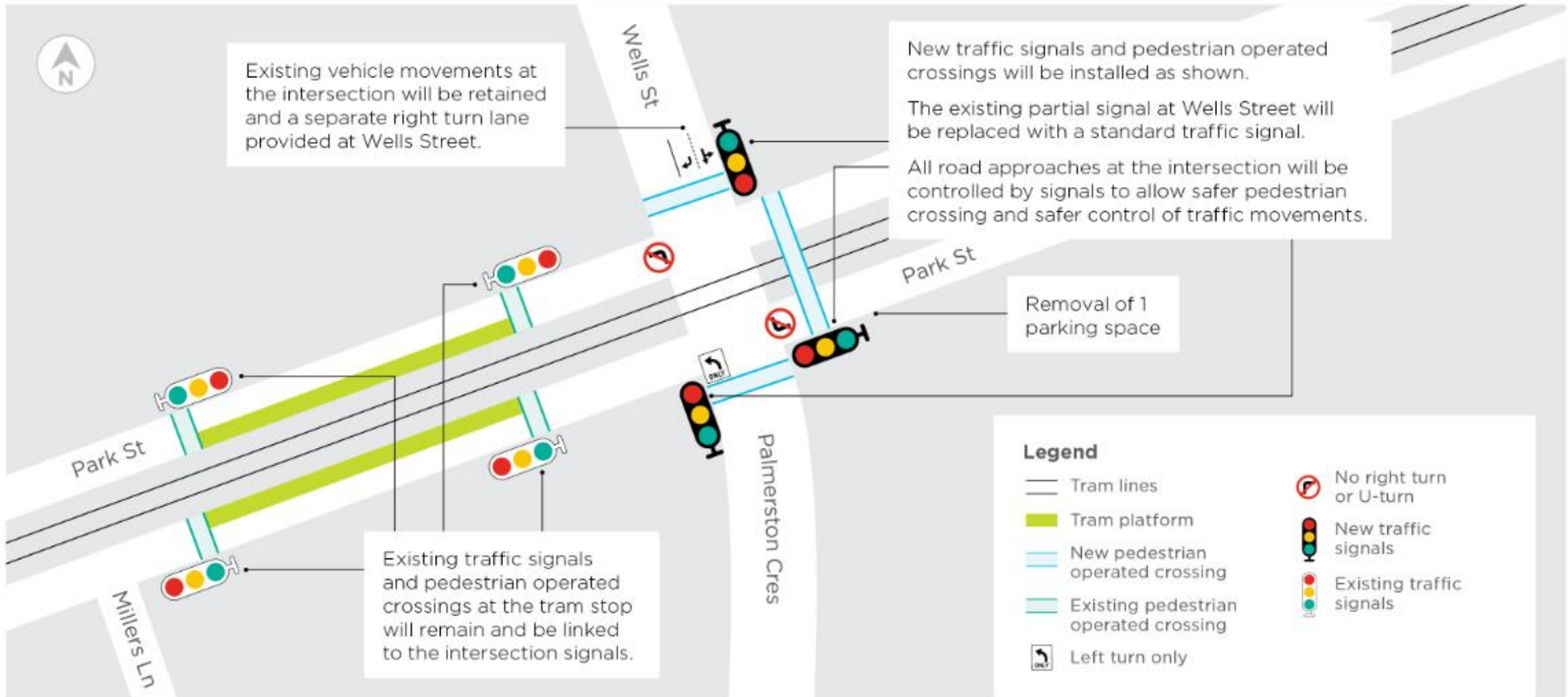
Meeting #27

Wednesday 9 December, Online Meeting



PARK AND WELLS STREET SIGNALISATION - RPV

PARK AND WELLS STREET PLANNED SIGNALISATION WORKS

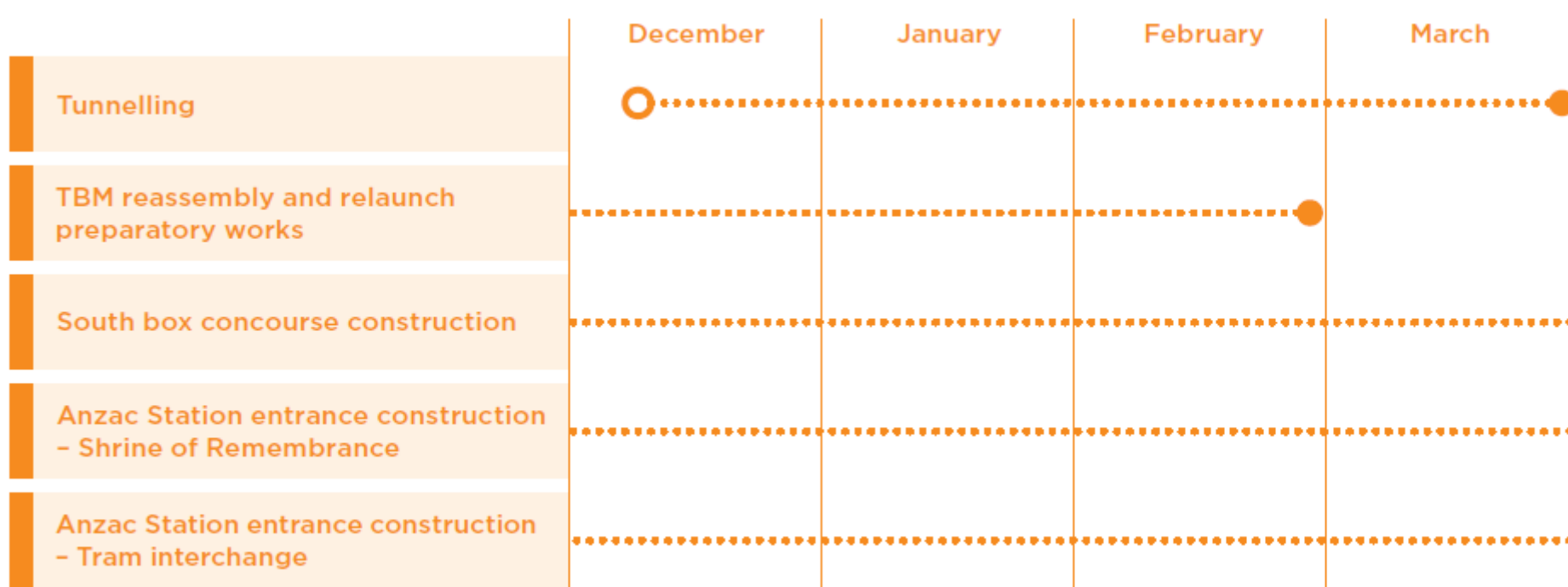


- To address essential **safety** and **operational performance** issues, RPV has agreed the proposal to fully signalise this intersection with the Department of Transport (VicRoads).
- Detailed design being finalised between DoT (VicRoads), Yarra Trams & City of Port Phillip (CoPP).
- RPV has commenced informing key stakeholders - local residents and businesses.
- Construction contract to be advertised early 2021. Works commencement from March 2021.
- Notification to the local community in early 2021.

CONSTRUCTION UPDATE - CYP

WORKS UPDATE

ANZAC STATION PROGRAM



WORKS UPDATE

TUNNELLING



- TBM Millie was blessed on Wednesday 2 December and launched on Thursday 3 December
- She has travelled approximately 50 metres and will now stop to have the rear gantries attached
- The last of TBM Alice's gantry pieces are being pulled back through the tunnels this week.
- Alice is on schedule to launch early next year



WORKS UPDATE

TUNNELLING PROGRESS



WORKS UPDATE

SHRINE STATION ENTRANCE



- Waterproofing works have been completed and the first section of the base slab is being poured today
- The second pour will be around the 18th December and is over 900 m³. To ensure it can finish on time, trucks will arrive to site from 5:30am onwards
- Once the base slab is poured the entrance walls will be built up from the base slab



WORKS UPDATE

SOUTH BOX EXCAVATION AND CONCOURSE



- Steel fixing commenced last week for the next section of the concourse level
- Pour 4 is underway today
- Excavation will commence on the fifth bay with the aim to have it completed early in the new year



- Excavation is now underway on the full extent of the tram interchange
- The excavation and pile break out will continue into next year
- There are a number of piles we need to install once we reach the bottom of the excavation. This will be in February and March next year
- Base slab construction is expected to commence in April before the entrance is built up from the base



WORKS UPDATE

TRAM INTERCHANGE



WORKS UPDATE

CHRISTMAS BREAK



Tunnelling Christmas shutdown:
23 December 2020 – 4 January
2021

Civil Christmas shutdown: 23
December 2020 – 11 January* 2021

*Some minor middle box works may
resume on the 4 January



ENVIRONMENT UPDATE

ENVIRONMENT UPDATE

NOISE MONITORING – TRAM INTERCHANGE



What's involved:

- Pile break out
- Excavation and ground anchors
- Steelfixing

Building	Unmitigated predicted noise level dB LAeq(15min)	Measured noise level dB LAeq(15min)
The Domain	70 – 80	75 dB
The Botanica	56 - 65	65 dB
Hallmark Apartments	69 - 80	70 dB
Domain Hill	69 - 80	72 dB

- *Modelled noise levels are unmitigated*
- *Modelled scenarios contain simultaneous equipment in operation, equipment has been reduced for works.*

SOUTH BOX EXCAVATION

SOUTH BOX EXCAVATION

METHODOLOGY OVERVIEW



- When tunnelling towards South Yarra – the TBMs started from the North Box
- This meant they built a 165m section of tunnel through the Southern Section of the future station
- We called this the ‘Sacrificial Tunnel’ because we will need to remove it

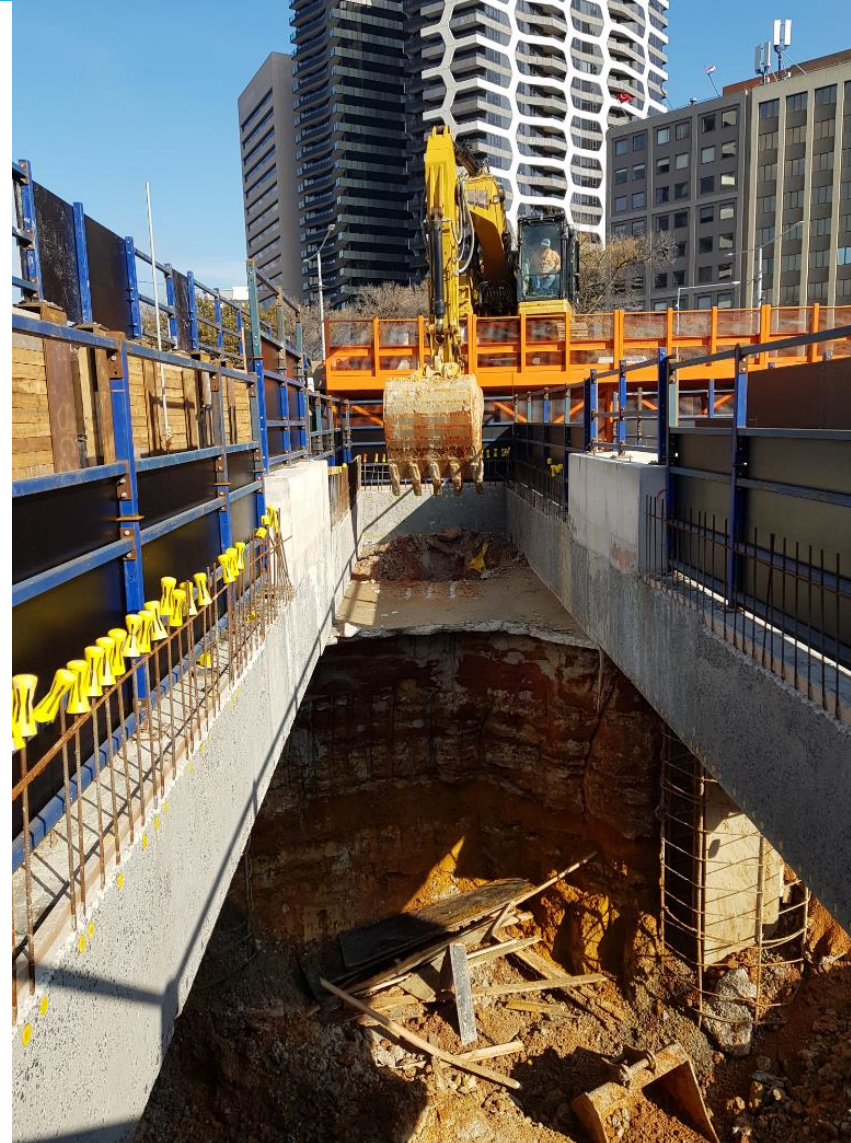


SOUTH BOX EXCAVATION

METHODOLOGY OVERVIEW



- In 2021 work will begin on the excavation from concourse level down to base slab in the Southern Section of the station
- This is when we will start removal of the Sacrificial Tunnel
- The activity at surface level will be similar to when the North box was excavated
- There will be machines loading soil and rubble into trucks at surface as it is removed from underground



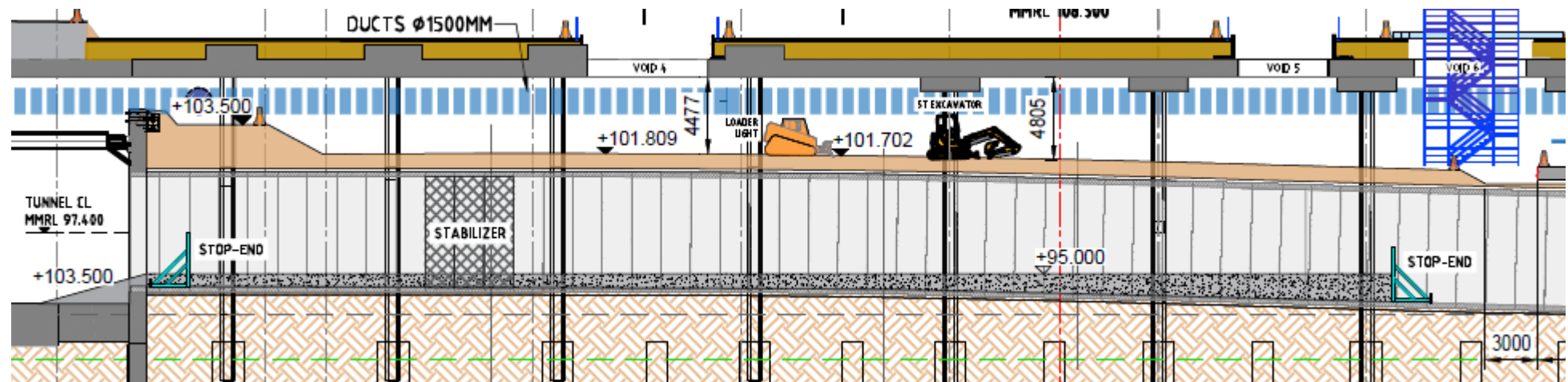
Excavation to base slab in the North box (June 2019)

SOUTH BOX EXCAVATION

METHODOLOGY OVERVIEW



- The first stage involves excavating down to the crown of the tunnel

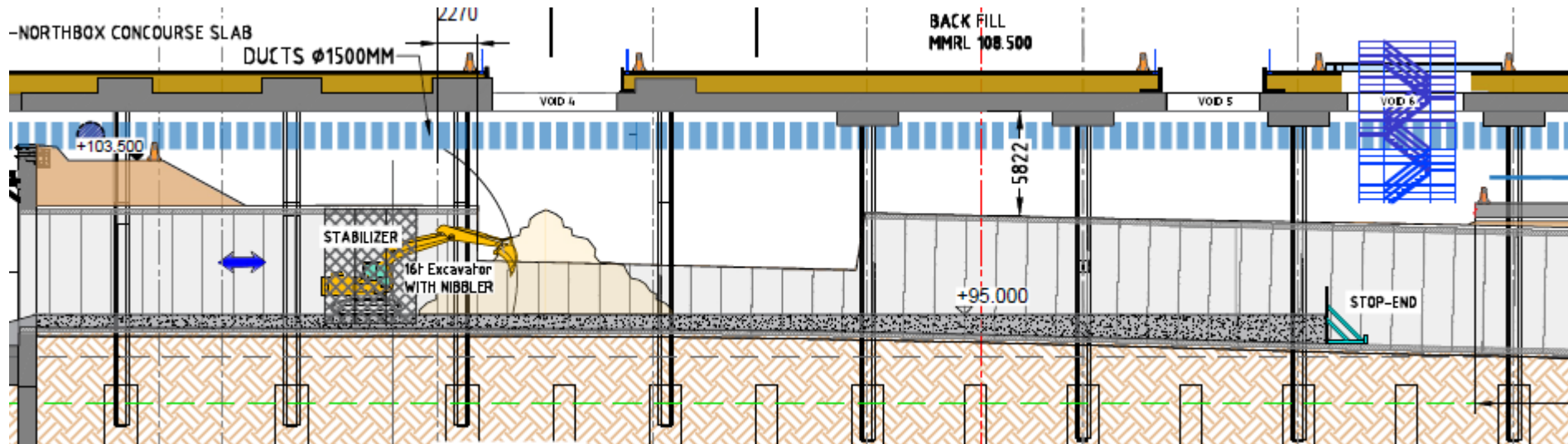
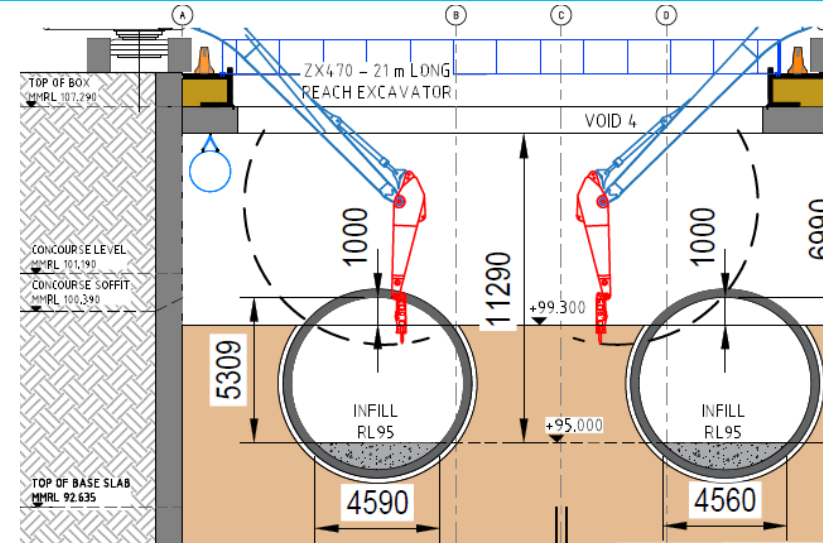


SOUTH BOX EXCAVATION

METHODOLOGY OVERVIEW



- Excavation then exposes the crown (top) of the sacrificial tunnel
- The crown is broken through and smaller excavators are lowered into the box to break out the remaining sections
- Long-reach excavators on the surface remove the material from the void and load it into trucks.



SOUTH BOX EXCAVATION

SACRIFICIAL TUNNEL EXCAVATION - PARIS



SOUTH BOX EXCAVATION

SACRIFICIAL TUNNEL EXCAVATION - PARIS

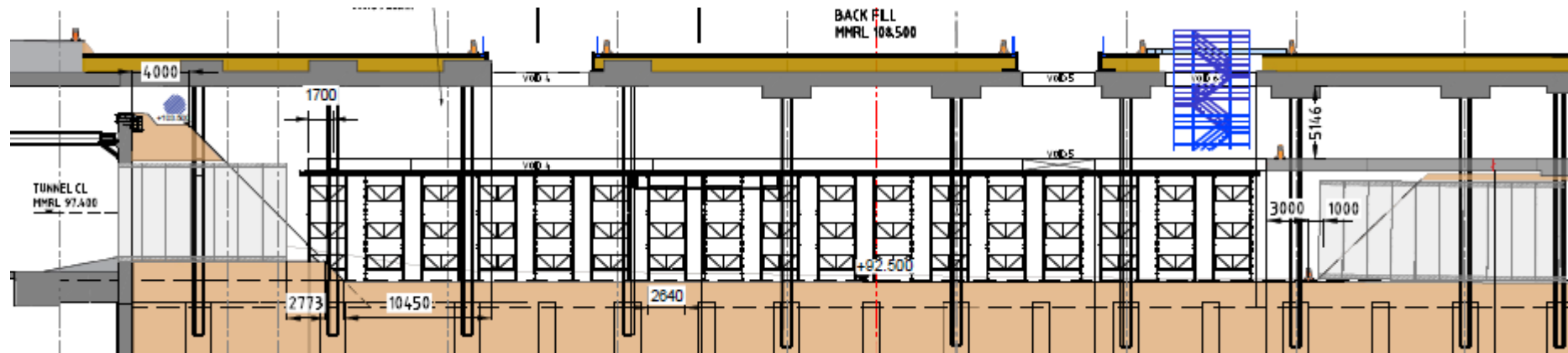
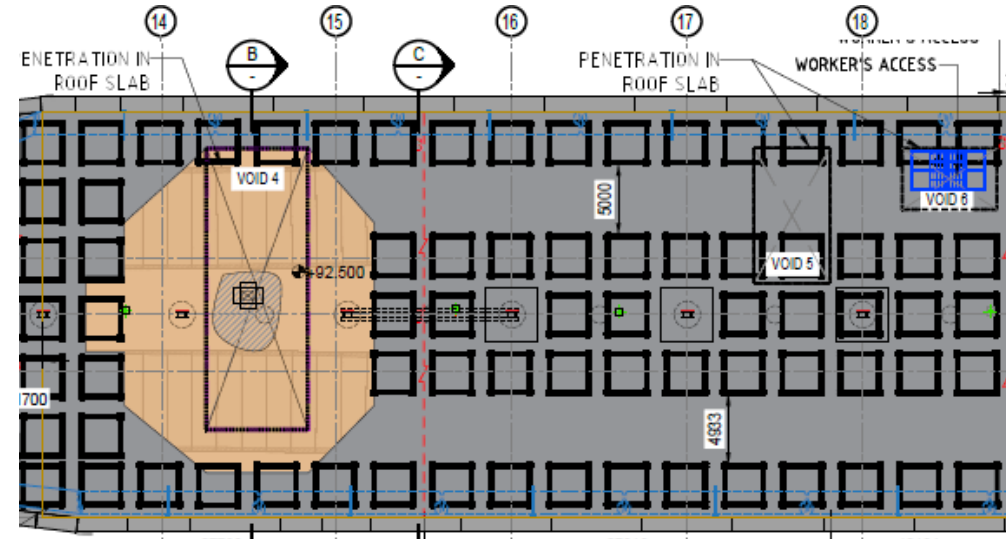


SOUTH BOX EXCAVATION

METHODOLOGY OVERVIEW



- Excavation continues until it reaches the completed sections of concourse
- Falsework is installed to create a platform for the remainder of the concourse level to be formed up and poured
- The next section of concourse is then poured, leaving a void, to allow continued access down to the base.

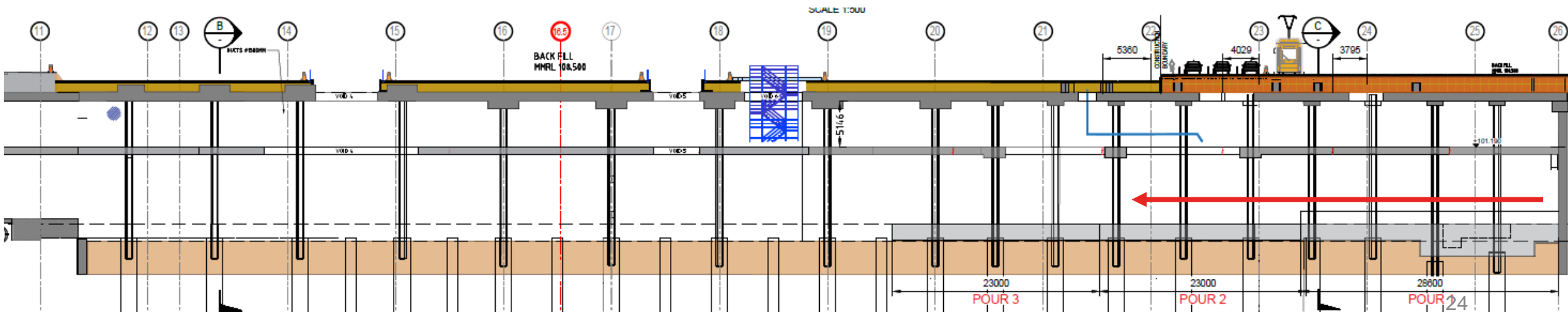
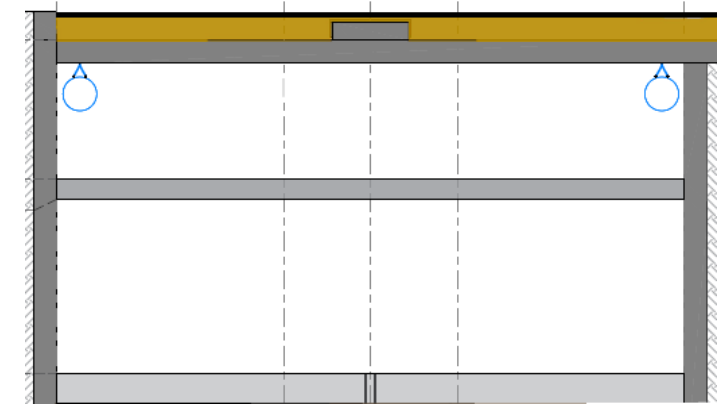


SOUTH BOX EXCAVATION

METHODOLOGY OVERVIEW



- Once the remainder of the concourse sections are poured, the remaining sections of tunnel are excavated
- The base slab is then poured from working from south to north
- Once the base slab is poured, the voids in the concourse level are formed and poured.

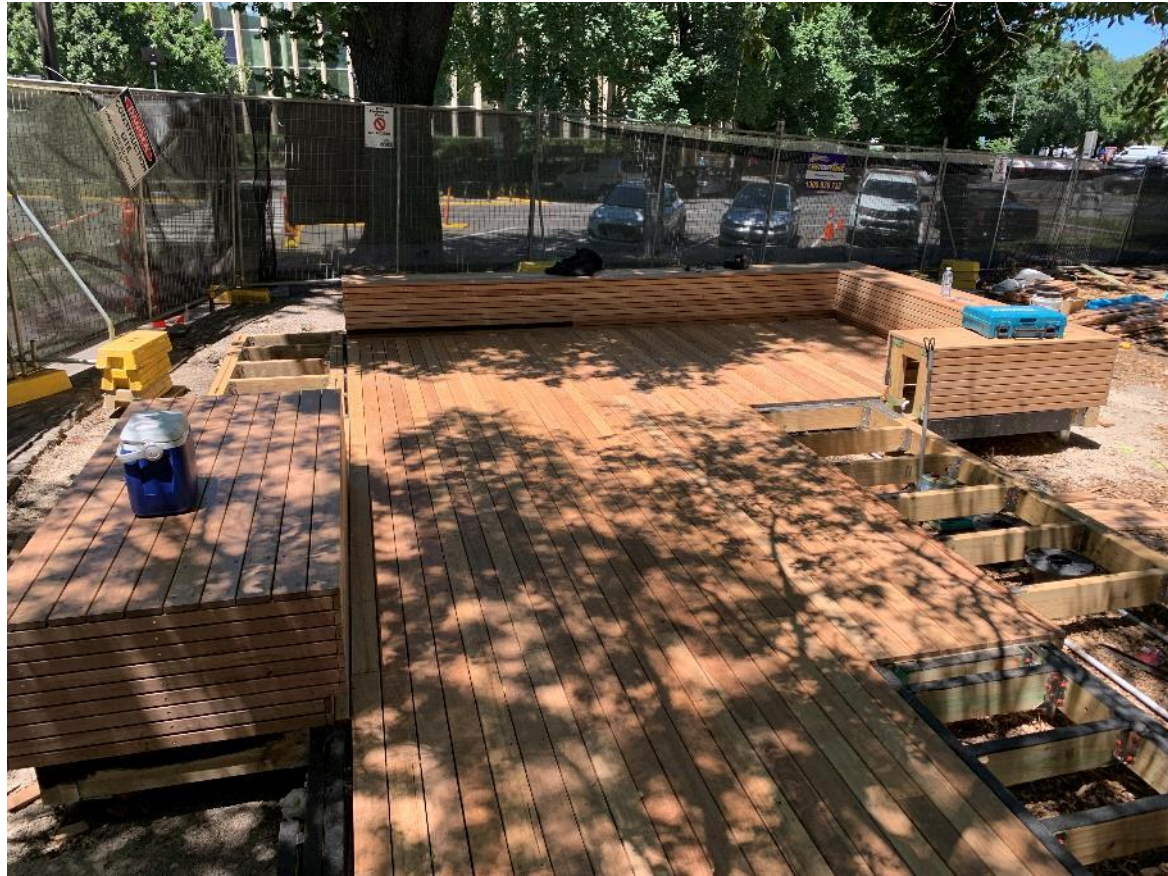


ALBERT RESERVE UPDATE

HOW IT STARTED



HOW IT'S GOING



HOW IT WILL END UP



- Park build is on track
- Should be finished by 17 December
- Creative Program looking to have a small scale opening event on 18 December
- All CRG members invited and welcome to bring friends
- Park management and maintenance will be managed by The Place Agency
- Information and FAQ available on the website.

QUESTIONS?