



Bulleen Park and Ride

Urban Design and Landscape Plan

Drawings

PLANNING AND ENVIRONMENT ACT 1987

MANNINGHAM PLANNING SCHEME

**NORTH EAST LINK PROJECT INCORPORATED DOCUMENT,
DECEMBER 2021**

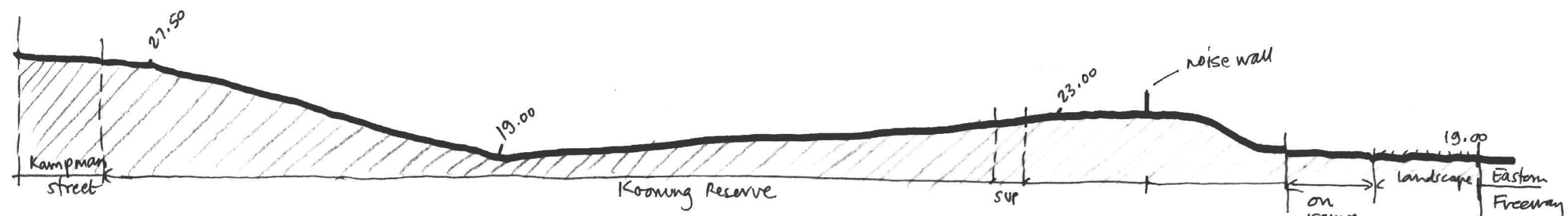
ENDORSED PLAN

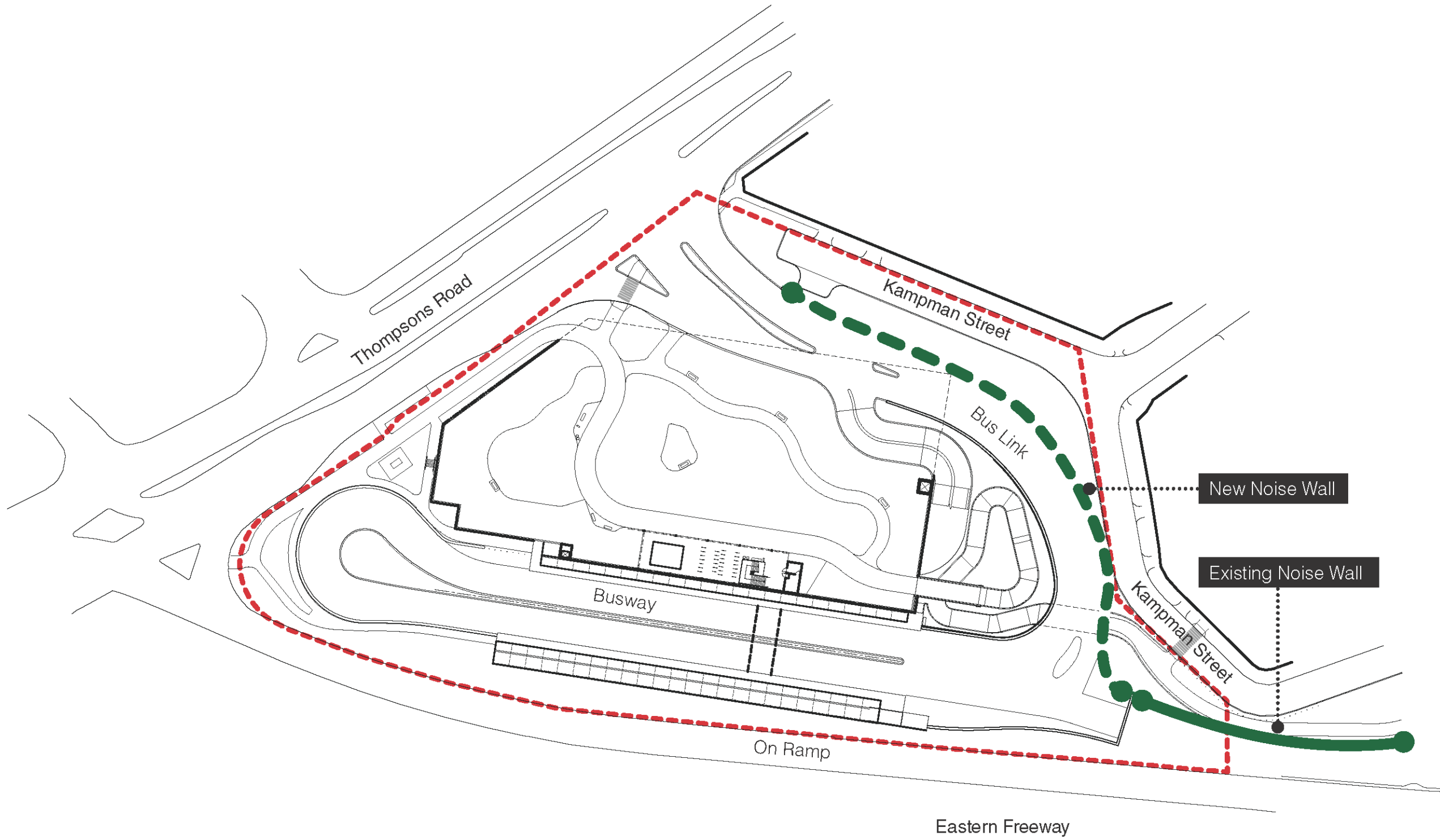
SHEET 1 OF 74

SIGNED 
MINISTER FOR PLANNING

DATE **28/3/21**

[illegible]

[illegible]



LEGEND:

- - - UDLP BOUNDARY
- EXISTING NOISE WALL
- NEW NOISE WALL

| | | | | | | | | | |
|------------|---------|------|----------|---------------|----------|---------|-----------|----------|-----|
| | | | | | | | | | |
| | | | | | | | | | |
| | | | | | | | | | |
| | | | | | | | | | |
| | | | | | | | | | |
| | | A | 20/02/21 | TOWN PLANNING | PE | SH | | | A V |
| | | 0 | 21/10/20 | TOWN PLANNING | PE | SH | | | A V |
| Revised By | In Serv | Rev. | Date | Description | Designed | Checked | Ind. Rev. | Approved | |

CLASSIFICATION: PUBLIC:

DO NOT SCALE

This drawing has been prepared for North East Link Project, a division of the Major Transport Infrastructure Authority, to address the requirements of the North East Link Project Incorporated Document (Dec 2019). It is not intended to be used for, and should not be relied on, for any other purpose.

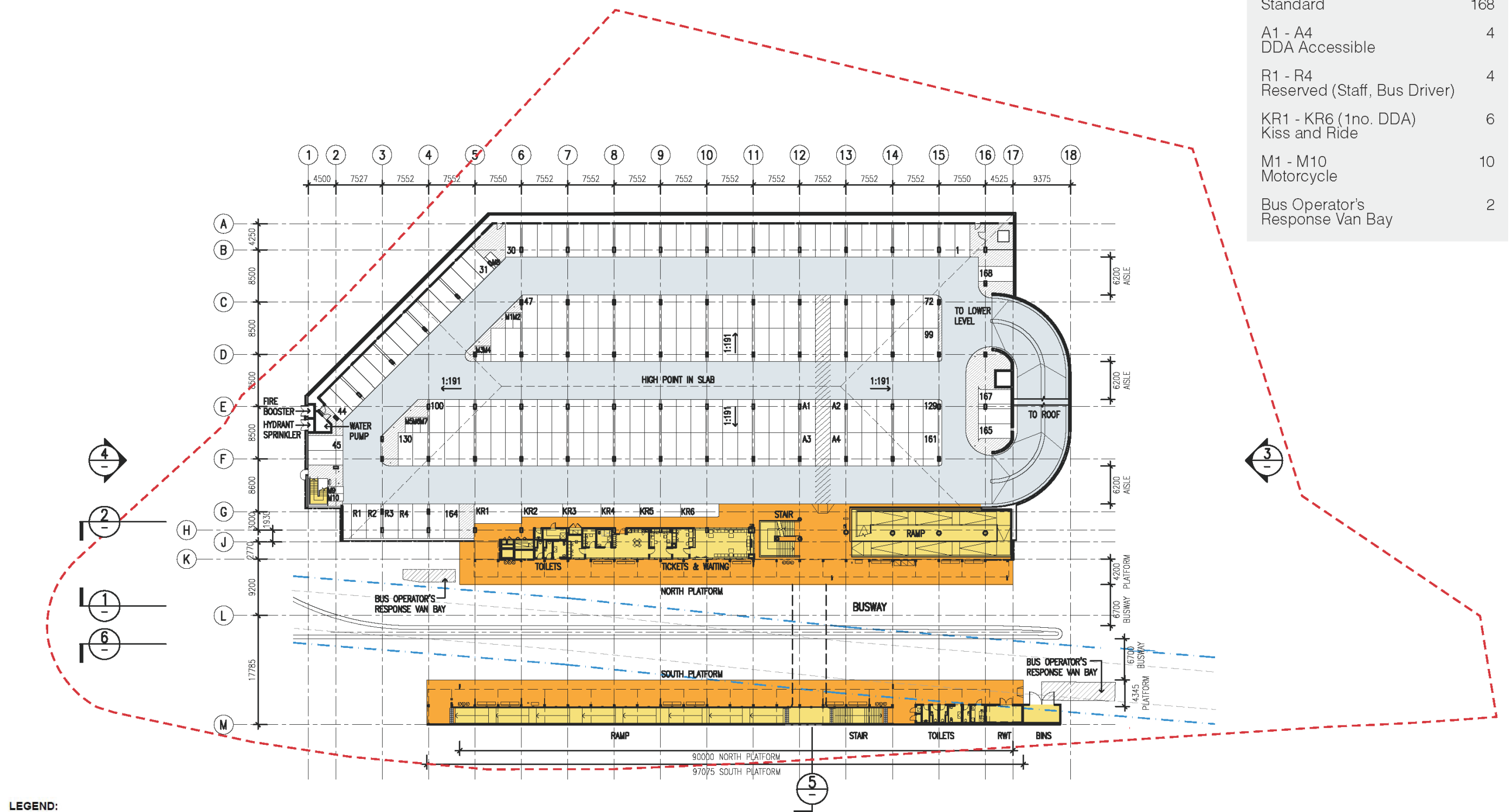
BULLEEN PARK AND RIDE

URBAN DESIGN AND LANDSCAPE PLAN



NOISE WALL ALIGNMENT

| | | | |
|----------------|--------------|---------------|------------|
| Drawn By | A. ZAFE | Designed By | P. ELLIOTT |
| Checked By | S. HENNESSY | Ind. Review | |
| Approved | A VANDERPUTT | Approval Date | |
| Drawing Number | 8 OF 72 | Revision | A |

| Parking Space Type | Number |
|------------------------------|---------------|
| Standard | 168 |
| A1 - A4 | 4 |
| DDA Accessible | |
| R1 - R4 | 4 |
| Reserved (Staff, Bus Driver) | |
| KR1 - KR6 (1no. DDA) | 6 |
| Kiss and Ride | |
| M1 - M10 | 10 |
| Motorcycle | |
| Bus Operator's | 2 |
| Response Van Bay | |



LEGEND:

| | |
|---|---|
|  | UDLP BOUNDARY |
|  | MELBOURNE WATER BUILDING OFFSET BOUNDARY |
| | SEWER EASEMENT |

Note: While the southern platform will be constructed along with the rest of the park and ride, it will not be regularly used during the interim operational phase, with pick-ups and drop offs occurring the northern platform during this period. The southern platform will become the city bound platform in the ultimate design. As such construction of elements of the southern platform, such as the canopy (structure and glazing) may be deferred until the platform begins regular operation.

| designed until the platform begins regular operation. | | | | | | | | |
|---|---------|------|----------|---------------|----------|---------|-----------|----------|
| | | | | | | | | |
| | | | | | | | | |
| | | | | | | | | |
| | | | | | | | | |
| | | A | 20/02/21 | TOWN PLANNING | PE | SH | | A V |
| | | 0 | 21/10/20 | TOWN PLANNING | PE | SH | | A V |
| Revised By | In Serv | Rev. | Date | Description | Designed | Checked | Ind. Rev. | Approved |



DO NOT SCALE

This drawing has been prepared for North East Link Project, a division of the Major Transport Infrastructure Authority, to address the requirements of the North East Link Project Incorporated Document (Dec 2019). It is not intended to be used for, and should not be relied on, for any other purpose.

BULLEEN PARK AND RIDE

URBAN DESIGN AND LANDSCAPE PLAN

INTERMEDIATE LEVEL

| | |
|-----------------------------------|---------------------------|
| Drawn By A. ZAFE | Designed By P. ELLIOTT |
| Checked By S. HENNESSY | Ind. Review |
| Approved A VANDERPUTT | Approval Date |
| Drawing Number 10 OF 72 | Revision A |



Total Car Spaces

367



 **north
east link**
PROJECT

 **GHD**

**peter elliott
architecture +
urban design**

CLASSIFICATION: PUBLIC:

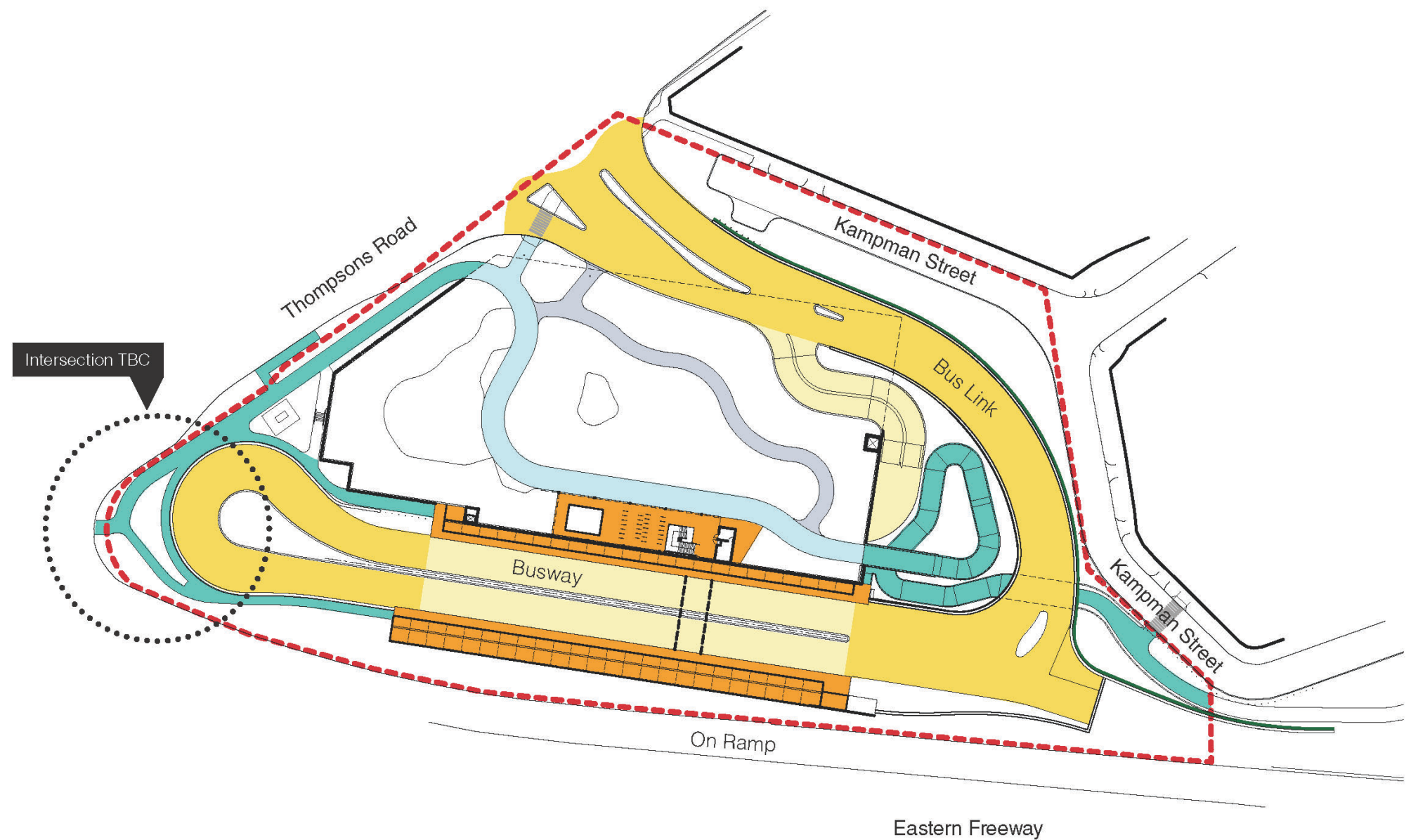
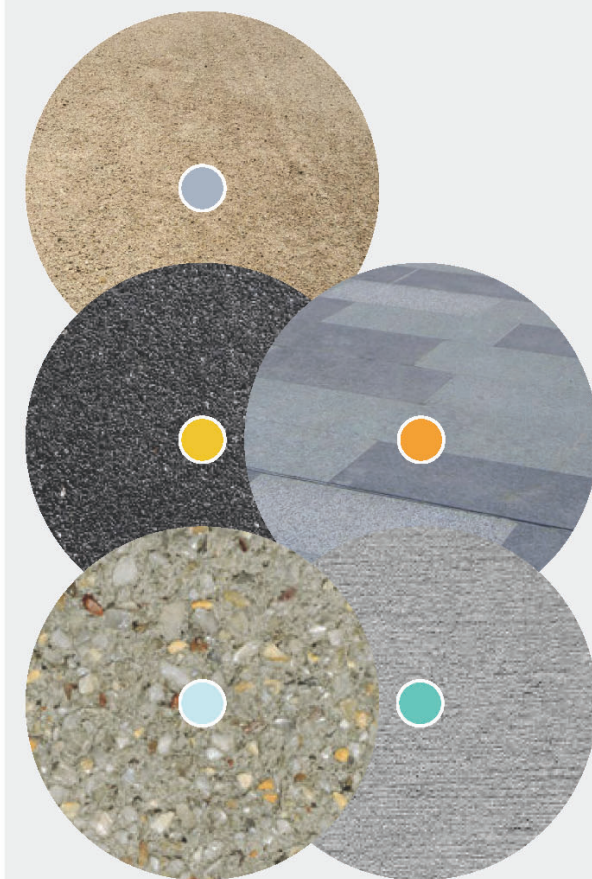
DO NOT SCALE

This drawing has been prepared for North East Link Project, a division of the Major Transport Infrastructure Authority, to address the requirements of the North East Link Project Incorporated Document (Dec 2019). It is not intended to be used for, and should not be relied on, for any other purpose.

PARKING STUDY

| | |
|-----------------------------------|---------------------------|
| Drawn By A. ZAFE | Designed By P. ELLIOTT |
| Checked By S. HENNESSY | Ind. Review |
| Approved A VANDERPUTT | Approval Date |
| Drawing Number 12 OF 72 | Revision A |

- Concrete roadway
- Asphalt roadway
- Paving tile
- Concrete | Exposed Aggregate
- Concrete | Brushed Finish
- Compacted Granitic Sand



Site Plan Diagram

| | | | | | | | | |
|------------|---------|------|----------|---------------|----------|---------|-----------|----------|
| | | | | | | | | |
| | | | | | | | | |
| | | | | | | | | |
| | | | | | | | | |
| | | | | | | | | |
| | | | | | | | | |
| | | A | 20/02/21 | TOWN PLANNING | PE | SH | | A V |
| | | 0 | 21/10/20 | TOWN PLANNING | PE | SH | | A V |
| Revised By | In Serv | Rev. | Date | Description | Designed | Checked | Ind. Rev. | Approved |



CLASSIFICATION: PUBLIC:

This drawing has been prepared for North East Link Project, a division of the Major Transport Infrastructure Authority, to address the requirements of the North East Link Project Incorporated Document (Dec 2019). It is not intended to be used for, and should not be relied on, for any other purpose.

BULLEEN PARK AND RIDE

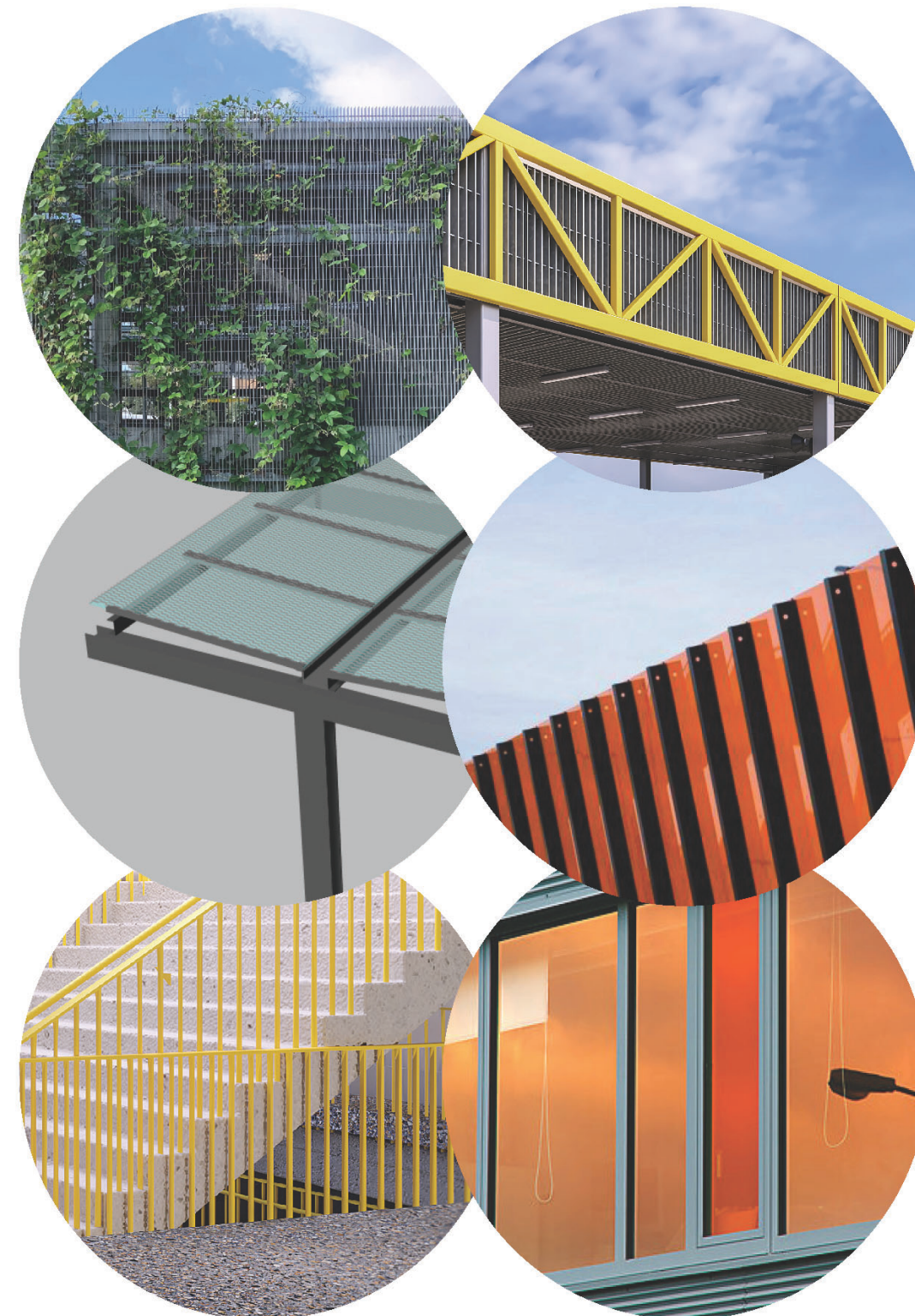
URBAN DESIGN AND LANDSCAPE PLAN

MATERIALS SCHEDULE - ROAD AND PAVING

| | |
|-----------------------------------|---------------------------|
| Drawn By A. ZAFE | Designed By P. ELLIOTT |
| Checked By S. HENNESSY | Ind. Review |
| Approved A VANDERPUTT | Approval Date |
| Drawing Number 13 OF 72 | Revision A |

Materials Schedule - Architectural

| | |
|----------------------|---|
| Car Park Interior | <ul style="list-style-type: none">• Concrete |
| Car Park Exterior | <ul style="list-style-type: none">• Concrete• Galvanised steel framing• Galvanised Webforge cladding |
| Platform Canopy | <ul style="list-style-type: none">• Painted steel framing• Tinted glass roof• Acrylic noise screen to the South platform |
| Concourse Canopy | <ul style="list-style-type: none">• Colour painted steel trusses• Galvanised webforge vertical panels behind trusses• Aluminium Webforge soffit• Colorbond roofing and gutters |
| Stairs & Ramps | <ul style="list-style-type: none">• Concrete with paving tile and nosing• Colour painted steel balustrades and handrails |
| Bus Station Pavilion | <ul style="list-style-type: none">• Aluminium framed windows• Colourback glass façade |

[illegible]

Materials Schedule - Urban

Noise Walls to Bus Link

SUP Elevated Ramp

SUP Underpass
Platform Underpass

Retaining Walls

- Painted steel framing
- Translucent colour acrylic panel infill
- Painted steel structure
- Concrete flooring in grey colour
- Galvanised steel vertical rail balustrade and cladding over floor structure
- Glazed brick cladding to pre-cast concrete panels
- Precast concrete panels



| | | | | | | | | |
|------------|---------|------|----------|---------------|----------|---------|-----------|----------|
| | | | | | | | | |
| | | | | | | | | |
| | | | | | | | | |
| | | | | | | | | |
| | | | | | | | | |
| | | | | | | | | |
| | | A | 20/02/21 | TOWN PLANNING | PE | SH | | A V |
| | | 0 | 21/10/20 | TOWN PLANNING | PE | SH | | A V |
| Revised By | In Serv | Rev. | Date | Description | Designed | Checked | Ind. Rev. | Approved |



CLASSIFICATION: PUBLIC:

DO NOT SCALE

This drawing has been prepared for North East Link Project, a division of the Major Transport Infrastructure Authority, to address the requirements of the North East Link Project Incorporated Document (Dec 2019). It is not intended to be used for, and should not be relied on, for any other purpose.

BULLEEN PARK AND RIDE

URBAN DESIGN AND LANDSCAPE PLAN

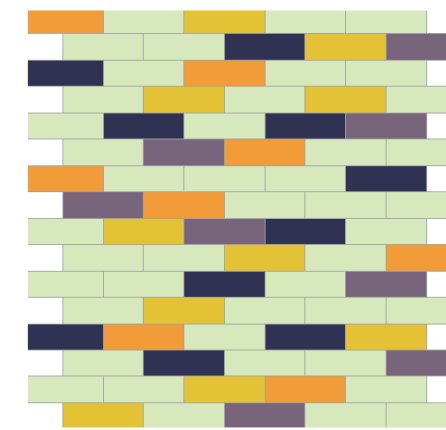
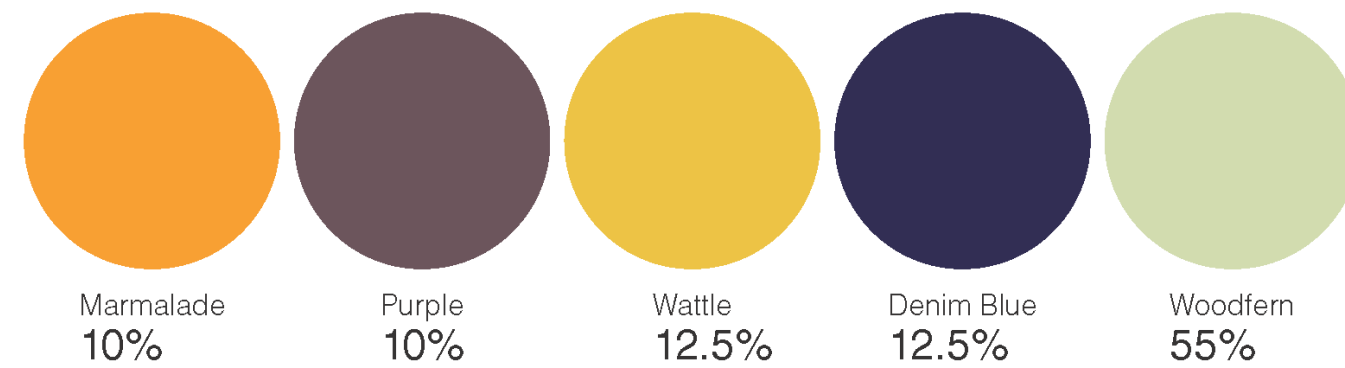
MATERIAL SCHEDULE

URBAN ELEMENTS

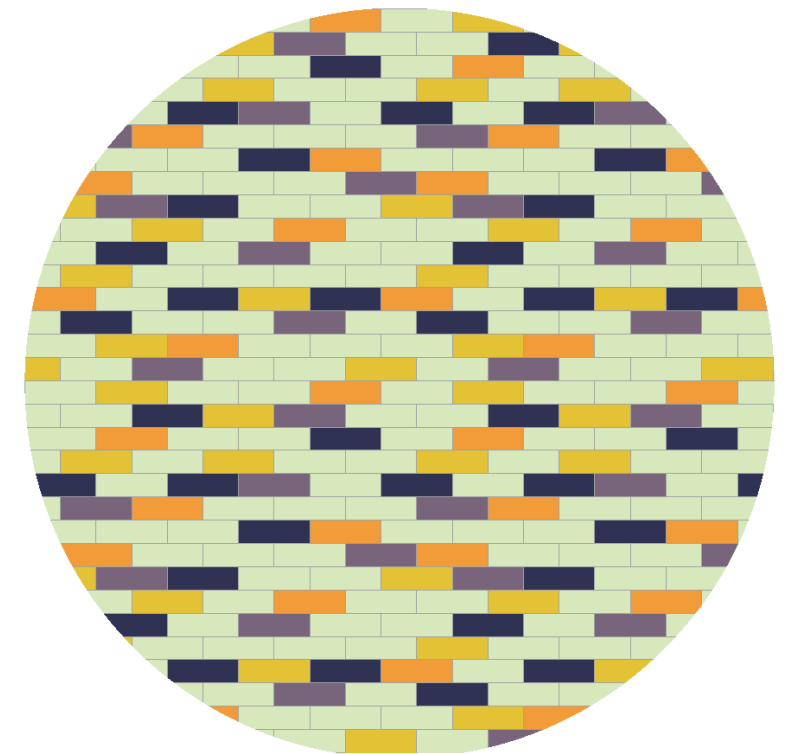
| | |
|-----------------------------------|---------------------------|
| Drawn By A. ZAFE | Designed By P. ELLIOTT |
| Checked By S. HENNESSY | Ind. Review |
| Approved A VANDERPUTT | Approval Date |
| Drawing Number 15 OF 72 | Revision A |

Platform Underpass

Euroa Glazed Bricks (final colour selection subject to sample approval)

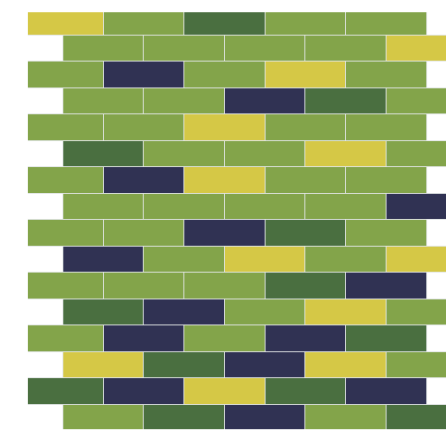
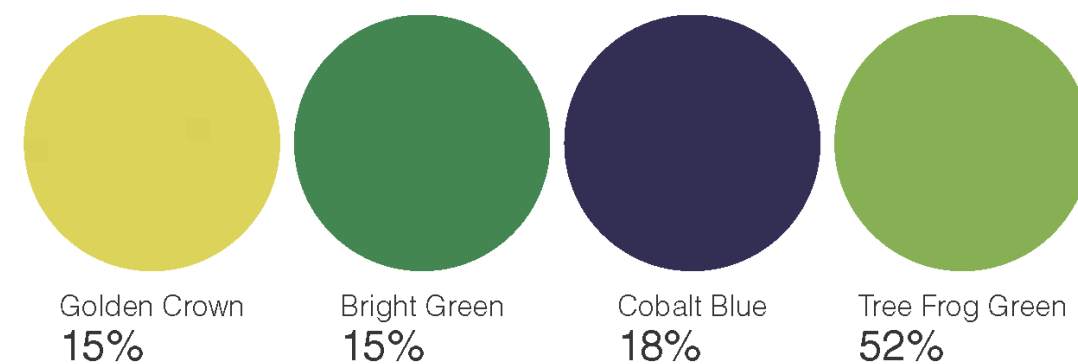


Repeat Pattern

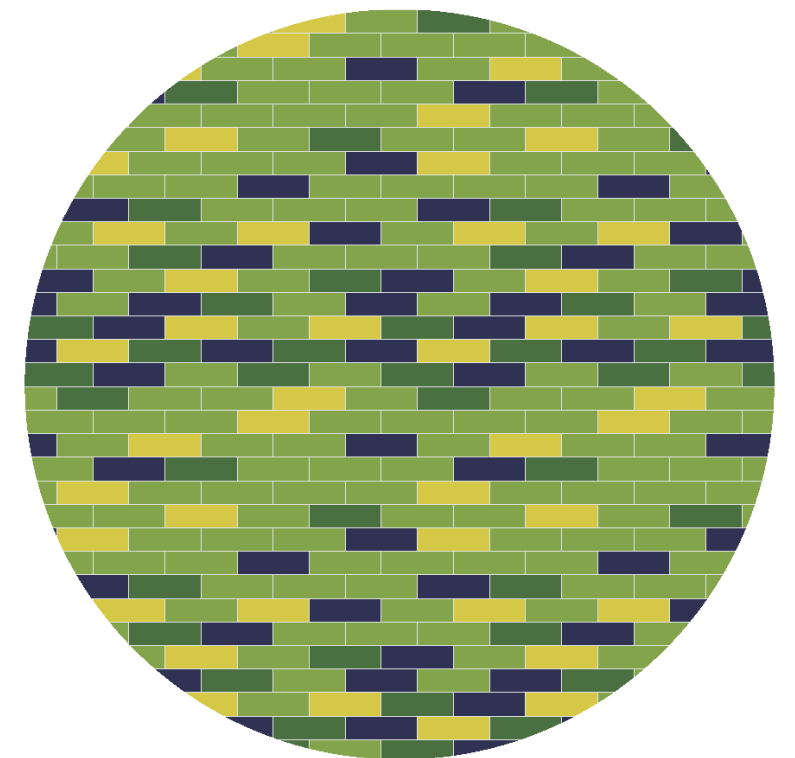


Kampman Street Underpass

Euroa Glazed Bricks (final colour selection subject to sample approval)



Repeat Pattern

[illegible]

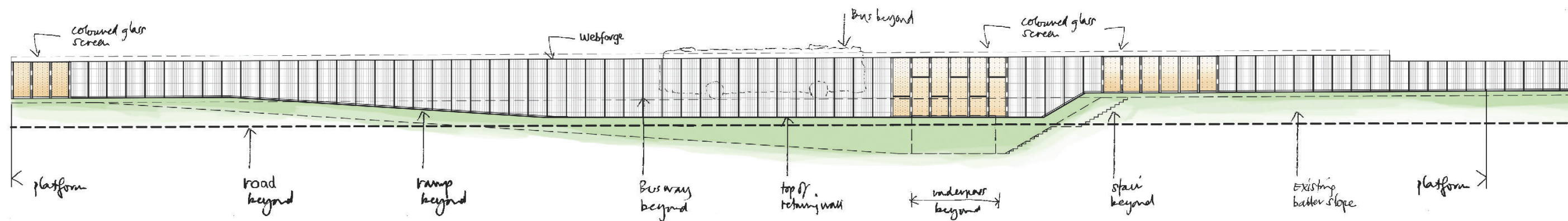


 **north
east link**
PROJECT  **peter elliot**
architecture +
urban design

CLASSIFICATION: PUBLIC:

This drawing has been prepared for North East Link Project, a division of the Major Transport Infrastructure Authority, to address the requirements of the North East Link Project Incorporated Document (Dec 2019). It is not intended to be used for, and should not be relied on, for any other purpose.

| | |
|-----------------------------------|---------------------------|
| Drawn By A. ZAFE | Designed By P. ELLIOTT |
| Checked By S. HENNESSY | Ind. Review |
| Approved A VANDERPUTT | Approval Date |
| Drawing Number 19 OF 72 | Revision 0 |



Busway South Platform
South Elevation



CLASSIFICATION: PUBLIC:

DO NOT SCALE

This drawing has been prepared for North East Link Project, a division of the Major Transport Infrastructure Authority, to address the requirements of the North East Link Project Incorporated Document (Dec 2019). It is not intended to be used for, and should not be relied on, for any other purpose.

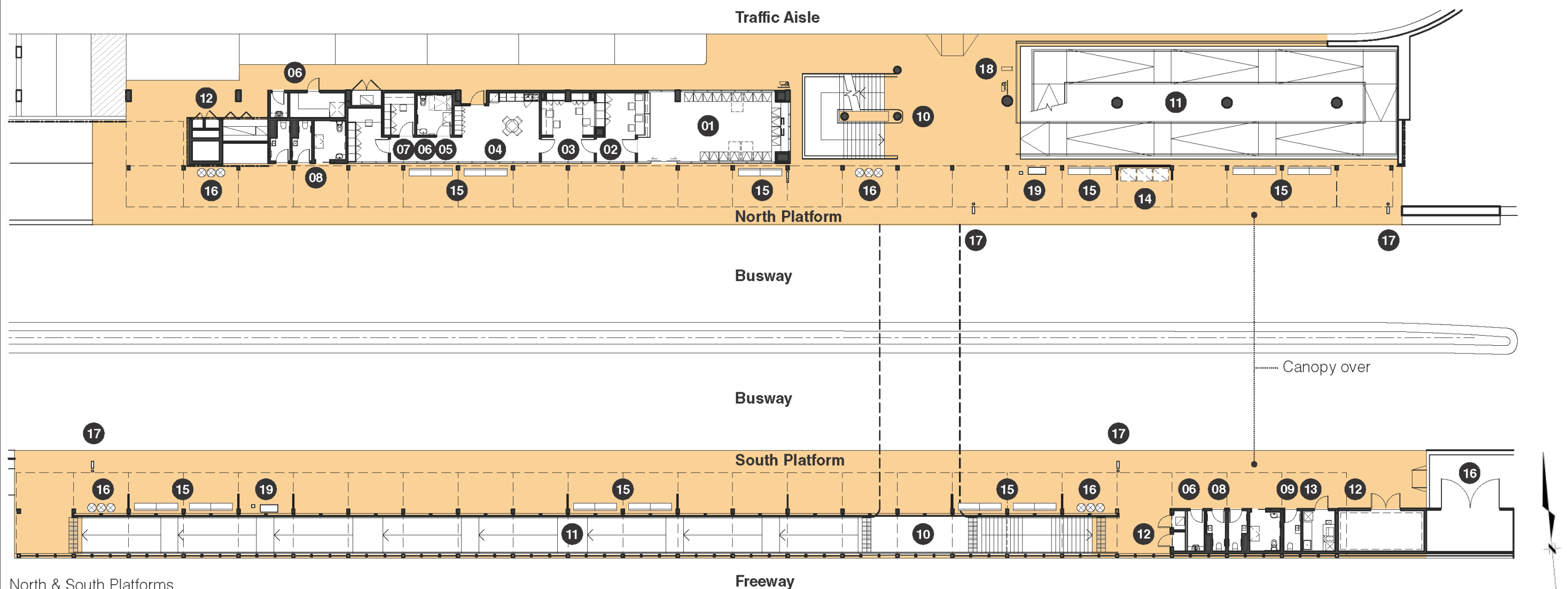
BULLEEN PARK AND RIDE URBAN DESIGN AND LANDSCAPE PLAN

SOUTH PLATFORM SOUTH ELEVATION

| | |
|----------------------------|---------------------------|
| Drawn By A. ZAFE | Designed By P. ELLIOTT |
| Checked By S. HENNESSY | Ind. Review |
| Approved A VANDERPUTT | Approval Date |
| Drawing Number 20 OF 72 | Revision A |

| Revised By | In Serv | Rev. | Date | Description | Designed | Checked | Ind. Rev. | Approved |
|------------|---------|------|----------|---------------|----------|---------|-----------|----------|
| | | A | 20/02/21 | TOWN PLANNING | | | | |
| | | 0 | 21/10/20 | TOWN PLANNING | PE | SH | | A V |

- | | | | | | |
|----|-------------------------------|----|---------------------|----|-------------------|
| 01 | Tickets & Waiting | 07 | IT Room | 14 | Vending Machines |
| 02 | Ticket Office | 08 | Public Toilets | 15 | Platform Seats |
| 03 | Staff Office | 09 | Bus Drivers' Toilet | 16 | Bins |
| 04 | Staff Lunch Room & Lockers | 10 | Stair | 17 | Bus Stop |
| 05 | Staff DDA Toilet + Shower | 11 | Ramp | 18 | Drinking Fountain |
| 06 | Cleaner / Store | 12 | Services | 19 | Myki Machines |
| | | 13 | Kiosk Store | | |



North & South Platforms Intermediate Level Plan

| | | | | | | | | |
|------------|---------|------|----------|---------------|----------|---------|-----------|----------|
| | | | | | | | | |
| | | | | | | | | |
| | | | | | | | | |
| | | | | | | | | |
| | | A | 05/02/21 | TOWN PLANNING | | | | |
| | | 0 | 21/10/20 | TOWN PLANNING | PE | SH | | A V |
| Revised By | In Serv | Rev. | Date | Description | Designed | Checked | Ind. Rev. | Approved |



DO NOT SCALE

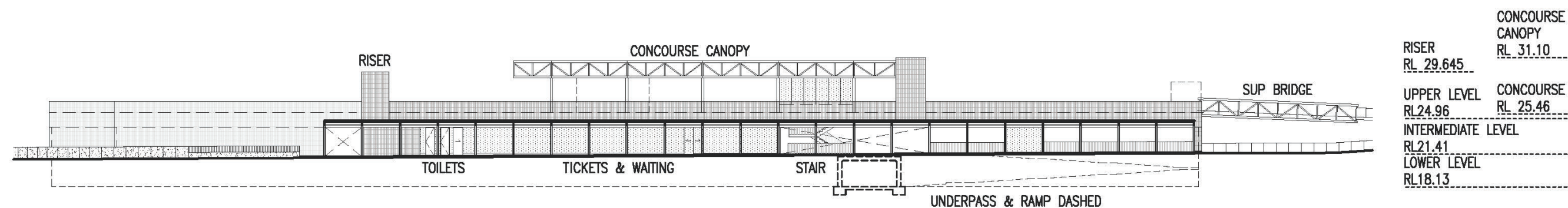
This drawing has been prepared for North East Link Project, a division of the Major Transport Infrastructure Authority, to address the requirements of the North East Link Project Incorporated Document (Dec 2019). It is not intended to be used for, and should not be relied on, for any other purpose.

BULLEEN PARK AND RIDE

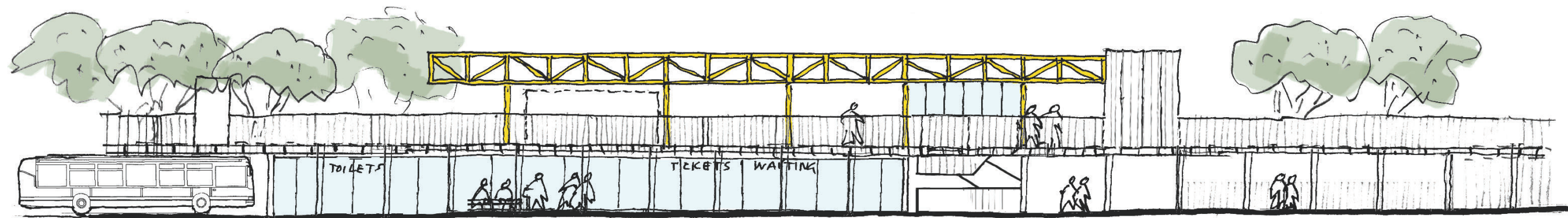
URBAN DESIGN AND LANDSCAPE PLAN

PLATFORM PLAN INTERMEDIATE LEVEL

| | |
|-----------------------------------|---------------------------|
| Drawn By A. ZAFE | Designed By P. ELLIOTT |
| Checked By S. HENNESSY | Ind. Review |
| Approved A VANDERPUTT | Approval Date |
| Drawing Number 21 OF 72 | Revision A |



Car Park Building
South Elevation



Car Park Building
South Elevation Diagram



CLASSIFICATION: PUBLIC:

DO NOT SCALE

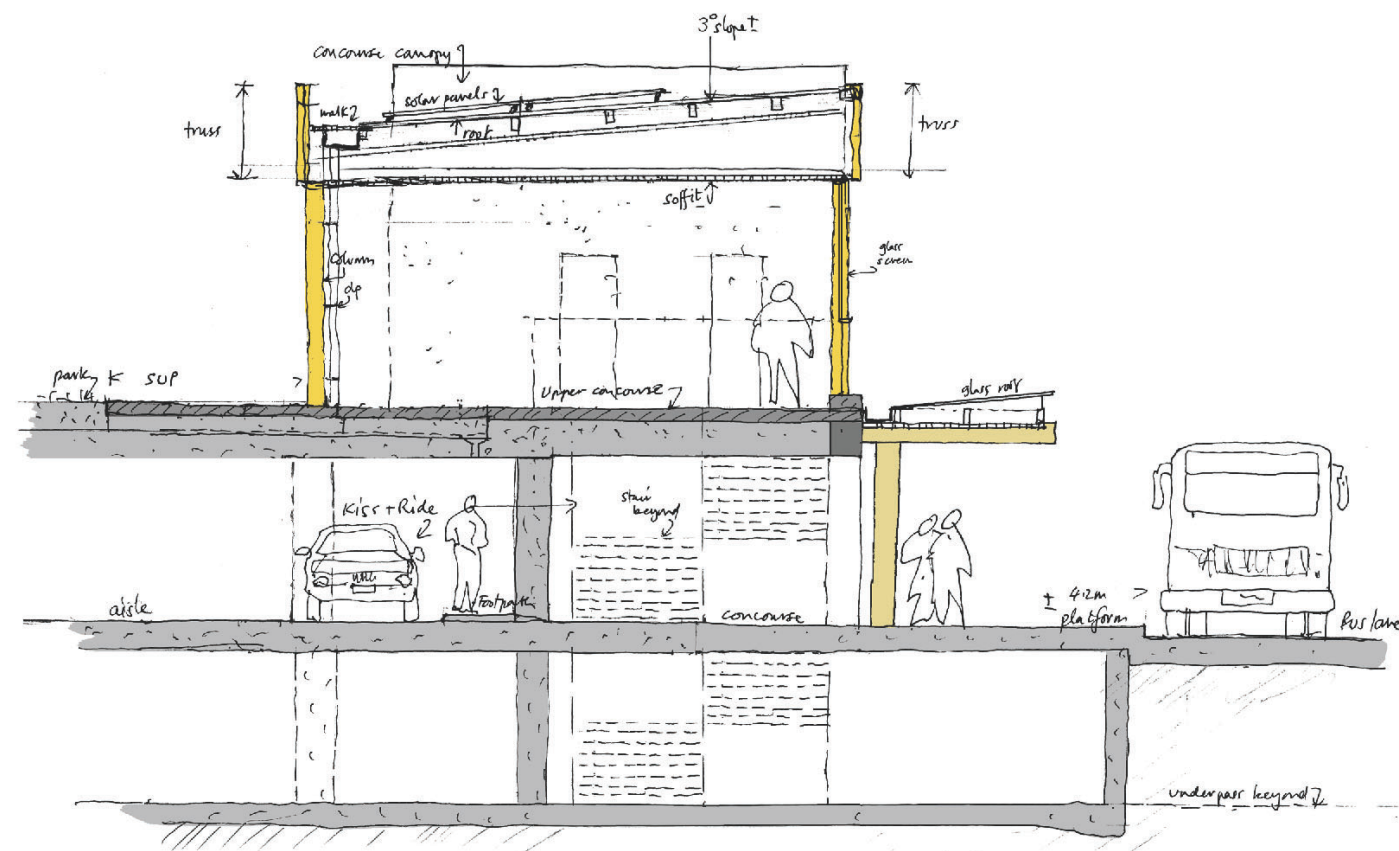
This drawing has been prepared for North East Link Project, a division of the Major Transport Infrastructure Authority, to address the requirements of the North East Link Project Incorporated Document (Dec 2019). It is not intended to be used for, and should not be relied on, for any other purpose.

BULLEEN PARK AND RIDE
URBAN DESIGN AND LANDSCAPE PLAN

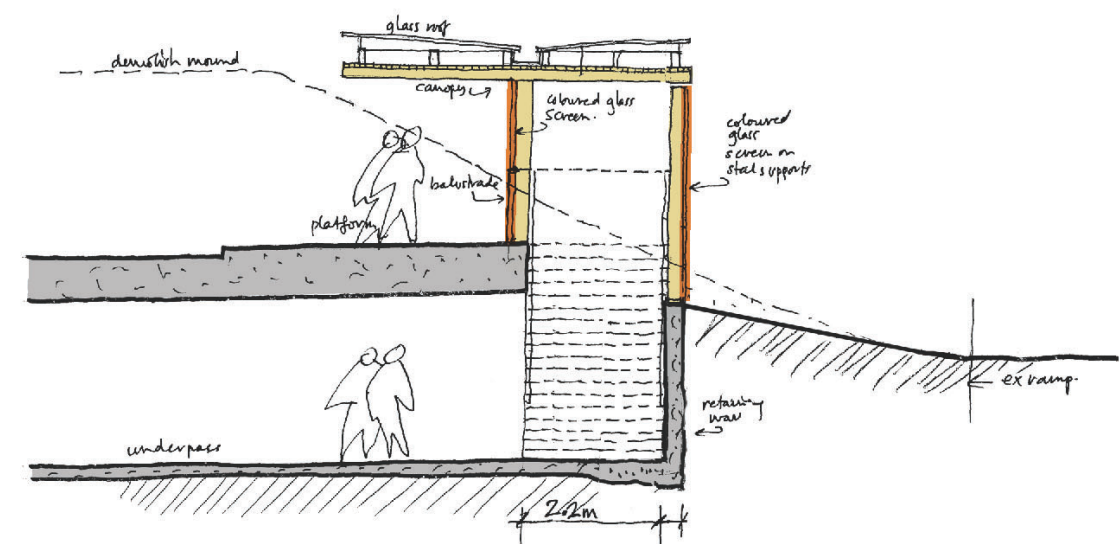
SOUTH ELEVATION
CAR PARK BUILDING

| | |
|----------------------------|---------------------------|
| Drawn By A. ZAFE | Designed By P. ELLIOTT |
| Checked By S. HENNESSY | Ind. Review |
| Approved A VANDERPUTT | Approval Date |
| Drawing Number 22 OF 72 | Revision 0 |

| Revised By | In Serv | Rev. | Date | Description | Designed | Checked | Ind. Rev. | Approved |
|------------|---------|------|----------|---------------|----------|---------|-----------|----------|
| | | 0 | 21/10/20 | TOWN PLANNING | PE | SH | | A V |



North Platform + Car Park
Section Diagram



South Platform + Underpass
Section Diagram



CLASSIFICATION: PUBLIC:

DO NOT SCALE

This drawing has been prepared for North East Link Project, a division of the Major Transport Infrastructure Authority, to address the requirements of the North East Link Project Incorporated Document (Dec 2019). It is not intended to be used for, and should not be relied on, for any other purpose.

BULLEEN PARK AND RIDE URBAN DESIGN AND LANDSCAPE PLAN SECTION OF BUS PLATFORM

| | |
|----------------------------|---------------------------|
| Drawn By A. ZAFE | Designed By P. ELLIOTT |
| Checked By S. HENNESSY | Ind. Review |
| Approved A VANDERPUTT | Approval Date |
| Drawing Number 23 OF 72 | Revision A |

| Revised By | In Serv | Rev. | Date | Description | Designed | Checked | Ind. Rev. | Approved |
|------------|---------|------|----------|---------------|----------|---------|-----------|----------|
| | | A | 20/02/21 | TOWN PLANNING | PE | SH | | A V |
| | | 0 | 21/10/20 | TOWN PLANNING | PE | SH | | A V |

