

What to expect

Removing the level crossing and building the new rail trench is a big job.

To lower the rail, we will need to excavate about 50,000 cubic metres of basalt rock and clay in the rail corridor – enough to fill 20 Olympic-sized swimming pools! The works will cause noise, dust and vibration.

We'll continue to notify residents and businesses in advance of construction works.

What causes noise and vibration?

The main sources are:

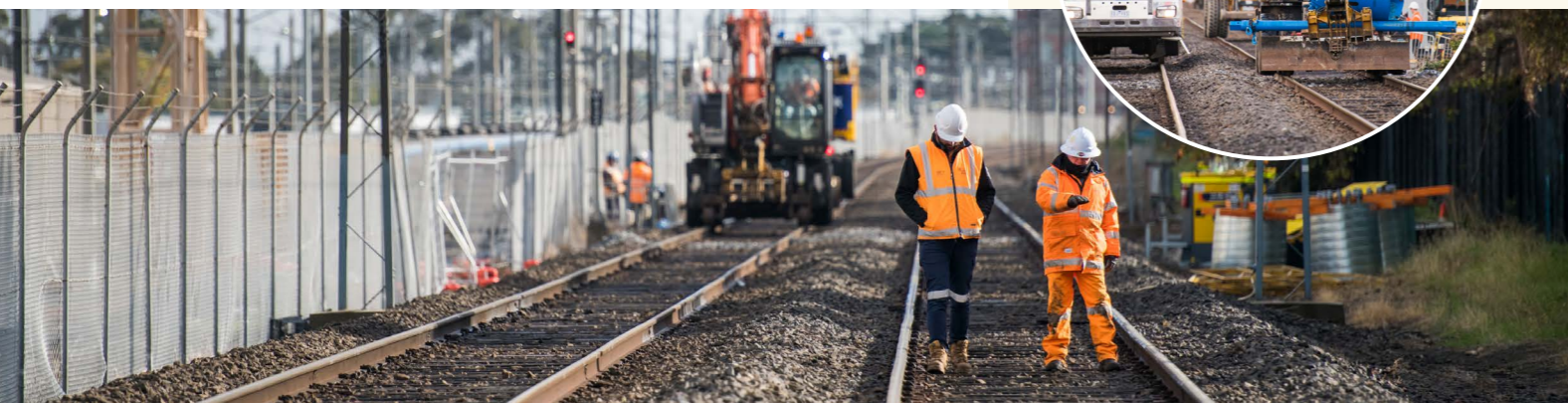
- ground compaction
- excavation and rock breaking
- deep drilling, known as piling
- heavy machinery, generators and power tools.

After the construction blitz

In December, we will return to normal construction hours as we put the finishing touches on the station precinct and complete landscaping and green spaces.

Normal construction hours are **Monday to Friday 7am to 6pm**, and **Saturday 7am to 1pm**. There may be times when we need to extend our working hours.

Service investigations in the rail corridor




CONTACT US

contact@levelcrossings.vic.gov.au
1800 105 105
Level Crossing Removal Project
GPO Box 4509, Melbourne VIC 3001

Follow us on social media
@levelcrossings



 Translation service – For languages other than English, please call 9321 5450.

Please contact us if you would like this information in an accessible format.

If you need assistance because of a hearing or speech impairment, please visit relayservice.gov.au

WPA6228

Stay up to date

We'll continue to work closely with local residents, businesses and schools throughout the project and provide regular progress and works updates.

We'll share information via door knocks, letterbox drops, phone calls, meetings and project website updates – and have pop-up stalls around Williamstown.

You can also:

- sign up for email updates at levelcrossings.vic.gov.au/subscribe
- SMS **Ferguson** to **0438 479 376** to sign up for text messages about our project works
- visit our website and social media channels for regular updates.

Get in touch

If you have any questions about the project, please call **1800 105 105** or email contact@levelcrossings.vic.gov.au



FERGUSON STREET, WILLIAMSTOWN – AUGUST 2021

WHAT TO EXPECT DURING MAJOR WORKS



Preparation works continue for the upcoming construction blitz

We're removing the dangerous Ferguson Street level crossing in Williamstown by lowering the rail line beneath the road, making way for a new North Williamstown Station and an upgraded precinct for the community to enjoy.

From **Sunday 15 August to Saturday 13 November 2021**, crews will work 24 hours a day, seven days a week.

This extended construction blitz will allow us to complete the major works in the shortest time, keeping travel and construction disruptions to a minimum.

In November 2021, the Ferguson Street level crossing will be gone **months ahead of schedule** and trains will again stop at North Williamstown Station. After that, we'll work into 2022 to complete the finishing touches to the project.

Project walking tours

Want to know more about what we're doing on the ground? Come along for a guided walking tour of the Ferguson Street level crossing removal site.

Led by project staff, you will be taken safely around the outside of the project site for a behind the scenes tour.

We'll talk you through the project and answer your questions as you view the construction of the new rail trench and North Williamstown Station.

Find out more and book your spot at levelcrossings.vic.gov.au/events/ferguson-street-williamstown-walking-tours

levelcrossings.vic.gov.au

Authorised and published by the Victorian Government, 1 Treasury Place, Melbourne



WHAT WE'RE DOING

During the extended construction blitz, we'll:



Dig a rail trench under Ferguson Street, 750 metres long, 17 metres wide, and up to eight metres deep



Lay new track and install new rail equipment and signalling



Drill foundations and install retaining walls for the rail trench and station platforms



Build a new North Williamstown Station, with stairs and lifts to lowered platforms.



Working along the rail corridor

Travel changes

During the extended construction blitz there'll be changes to the way you travel in the area and on the Williamstown line.



Road

Ferguson Street will close to drivers at the level crossing from **Sunday 15 August** for up to six weeks, with a detour and reduced speeds in place.

During this time we will excavate under Ferguson Street and install new rail track and associated infrastructure.

Motorists can detour via Melbourne Road, Giffard Street, Osborne Street and Victoria Street with traffic management and signage in place to help guide drivers.



Rail

North Williamstown Station will close from **Monday 2 August** to prepare for the major rail disruption.

A shuttle service will run between North Williamstown Station and Williamstown Beach and Newport stations to connect passengers to train services.



Parking

The North Williamstown Station car park will close from **8pm Friday 30 July** and will reopen **28 February 2022**.

Alternative car parking will be available during this time near Newport Station, at 432 Melbourne Road and 23 Market Road.



Walking and cycling

We will maintain access for pedestrians and dismounted cyclists at the Ferguson Street level crossing. Mounted cyclists will need to follow the vehicle detour.

Buses will replace trains between Newport and Williamstown stations from **8.30pm Friday 20 August** to the **last service on Friday 12 November**.

