



Artist impression only. Subject to change.

Dublin Road level crossing gone and new station in 2025

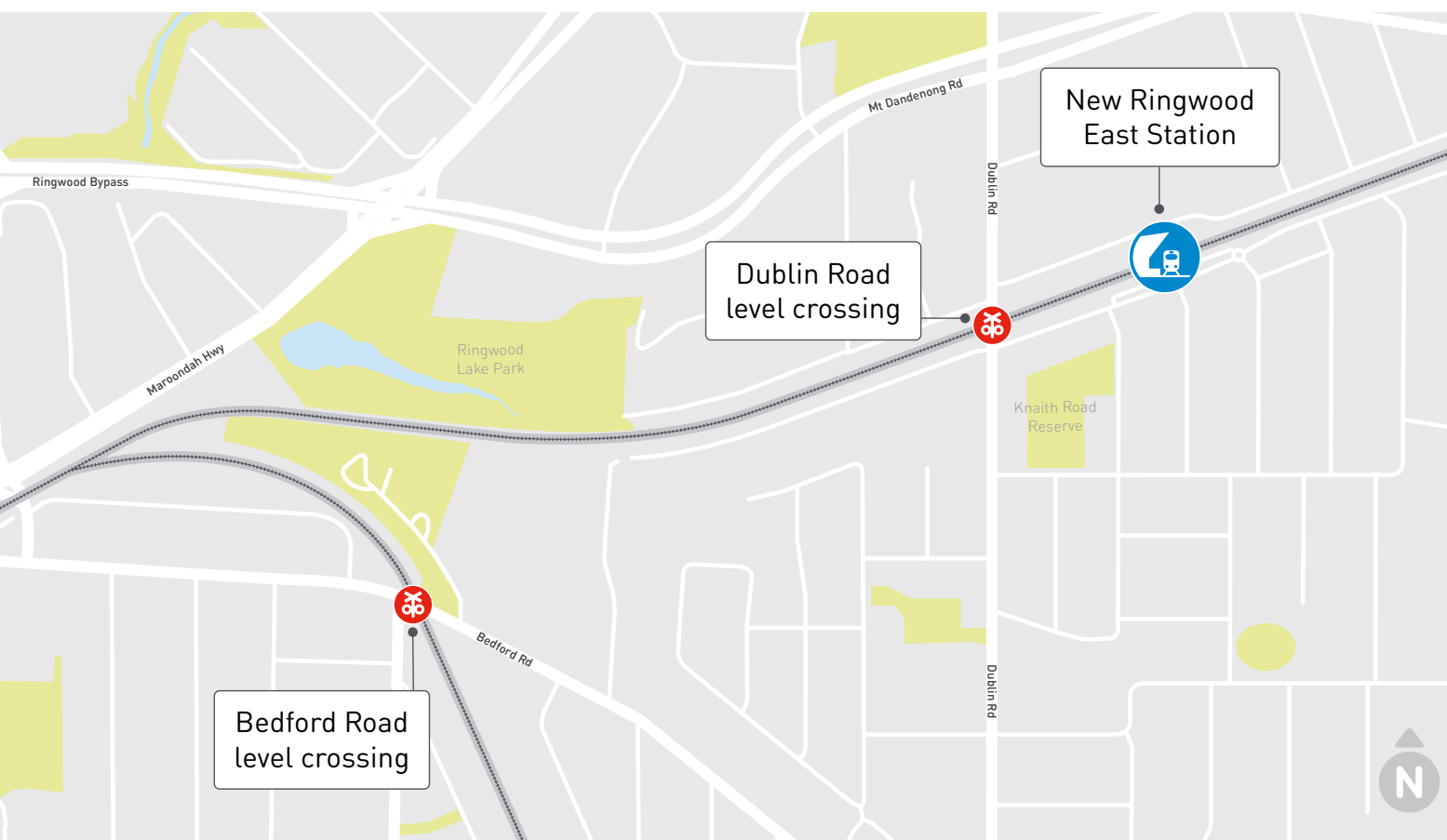
Early artist impressions for the rail trench at Dublin Road and the new Ringwood East Station are now available and you can have your say on aspects of the project's design.

Major construction starts in 2023 and in 2025 trains will be running in the new rail trench and Dublin Road will be level crossing free.

Locals can look forward to spending less time stuck at boom gates, and having safer and easier access to public transport, local shops and other services.



Train passing through the Dublin Road, Ringwood East level crossing



Have your say on initial concept designs for the Dublin Road level crossing removal

We're seeking community feedback on initial concept designs for the Dublin Road level crossing removal and the new Ringwood East Station.

You can view the designs and provide feedback on our engagement platform Engage Victoria.

Have your say by **11.59pm Sunday 12 June** at engage.vic.gov.au/lxrp-dublin-road

If you would like a hard copy submission form sent to you please contact us on **1800 105 105** or email us at contact@levelcrossings.vic.gov.au

Feedback on initial concept designs
Provide your feedback on key elements of the Dublin Road level crossing removal and new Ringwood East Station via the design feedback survey.

Local traders
We're committed to working with local businesses during the removal of the level crossing, help us to help you by completing our local business survey.

Planning approval
We are seeking community feedback on a range of planning matters. You can view the plan online showing the boundary of the area where works will occur. Feedback will inform the Minister for Planning's assessment of the project.

Nominate to be a part of our construction liaison group

The group will meet regularly to learn more about the construction program and provide another avenue to share insights and information between the community and project team.

Community information sessions

Join one of our community information sessions to chat with the Level Crossing Removal Project team about the Dublin Road initial concept designs.

Face-to-face information session:
Saturday 28 May, 11am to 2pm
4th Ringwood Scout Hall,
Mines Road, Ringwood East

Online community information session:
Wednesday 25 May, 6pm to 7pm
Registration for the online session is required. You can register at engage.vic.gov.au/lxrp-dublin-road

Stay up to date

The best way to stay up to date on Bedford Road and Dublin Road level crossing removal projects is to sign up for email updates at levelcrossings.vic.gov.au/subscribe

CONTACT US

contact@levelcrossings.vic.gov.au
1800 105 105
Level Crossing Removal Project
GPO Box 2392, Melbourne VIC 3001

Follow us on social media
[@levelcrossings](https://www.facebook.com/levelcrossings)

Translation service – For languages other than English, please call 9209 0147.

Please contact us if you would like this information in an accessible format.

If you need assistance because of a hearing or speech impairment, please visit relayservice.gov.au

Dublin Road project timeline

Early 2022

- Initial concept designs released
- Community engagement starts

Mid 2022

- Updated designs released

2023

- Major construction starts

2025

- Level crossing gone for good
- Ringwood East Station open

**Timeline above subject to change*



Traffic at Dublin Road, Ringwood East level crossing



LEVEL CROSSING REMOVAL PROJECT

A level crossing free Ringwood

BEDFORD ROAD, RINGWOOD
DUBLIN ROAD, RINGWOOD EAST
MAY 2022

RINGWOOD LEVEL CROSSING REMOVAL UPDATE

We are removing level crossings at Dublin Road, Ringwood East and Bedford Road, Ringwood, which will make Ringwood level crossing free.

In total we are removing 85 level crossings across Melbourne, with 60 already gone for good, including six on the Lilydale/Belgrave line.

The Lilydale Line will be level crossing free in 2025, with works underway at Union Road, Surrey Hills and Mont Albert Road, Mont Albert, and planning underway for level crossing works at Coolstore Road, Croydon and Cave Hill Road, Lilydale, in addition to Dublin Road.

In addition to removing the Dublin Road level crossing we'll build a brand-new Ringwood East Station and deliver around 460 upgraded car parking spaces. Initial concept designs are now available.

At Bedford Road, Ringwood we received overwhelming support for removing the dangerous and congested level crossing by building the rail trench we announced last year.

Thanks to the 300 people who shared their thoughts via our information sessions, doorknocks and 'pop-ups' throughout the area.

We've started analysing your feedback to inform updated designs due for release mid-year.

Why these level crossings need to go

- More than **23,000 vehicles** drive through these level crossings every day
- Boom gates are down for up to **23 minutes** during the morning peak
- 18 Lilydale line trains** travel through the Dublin Road crossing and **15 Belgrave line trains** travel through the Bedford Road level crossing during the morning peak
- Dangerous boom gates cause **congestion** for school, local and passing-through traffic using these vital road connections.



New shared use path connection

Community feedback on the Bedford Road initial concept designs identified an opportunity to connect the Heathmont Rail Trail to Bedford Park by building a new shared walking and cycling path between Lena Grove and Bedford Park.

The shared use path will be included in our updated designs and it will improve safety for pedestrians and cyclists travelling in the area.

Bedford Road level crossing removal

We're continuing to develop designs for the Bedford Road level crossing removal, with updated designs to be released mid-year.

After releasing initial designs in February, we've spoken to approximately 300 people through online information sessions, at Ringwood Station and Bedford Road 'pop-ups' and on our consultation page on the Engage Victoria platform.

Project benefits

Removing the Bedford Road boom gates will mean:

- improved safety for pedestrians and drivers
- a more reliable road network and faster travel times for the 13,500+ vehicles that drive through the Bedford Road level crossing each day
- paving the way for more trains to run more often
- hundreds of jobs created during construction.

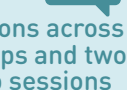
1374

views on project website



300

conversations across four pop-ups and two virtual info sessions



11

workshops and briefings with community stakeholder groups



Email updates sent to approx. **2800** people



113

survey responses including online and hard copy submissions



80

questions answered on Engage Victoria



Community update sent to about

28,000 households

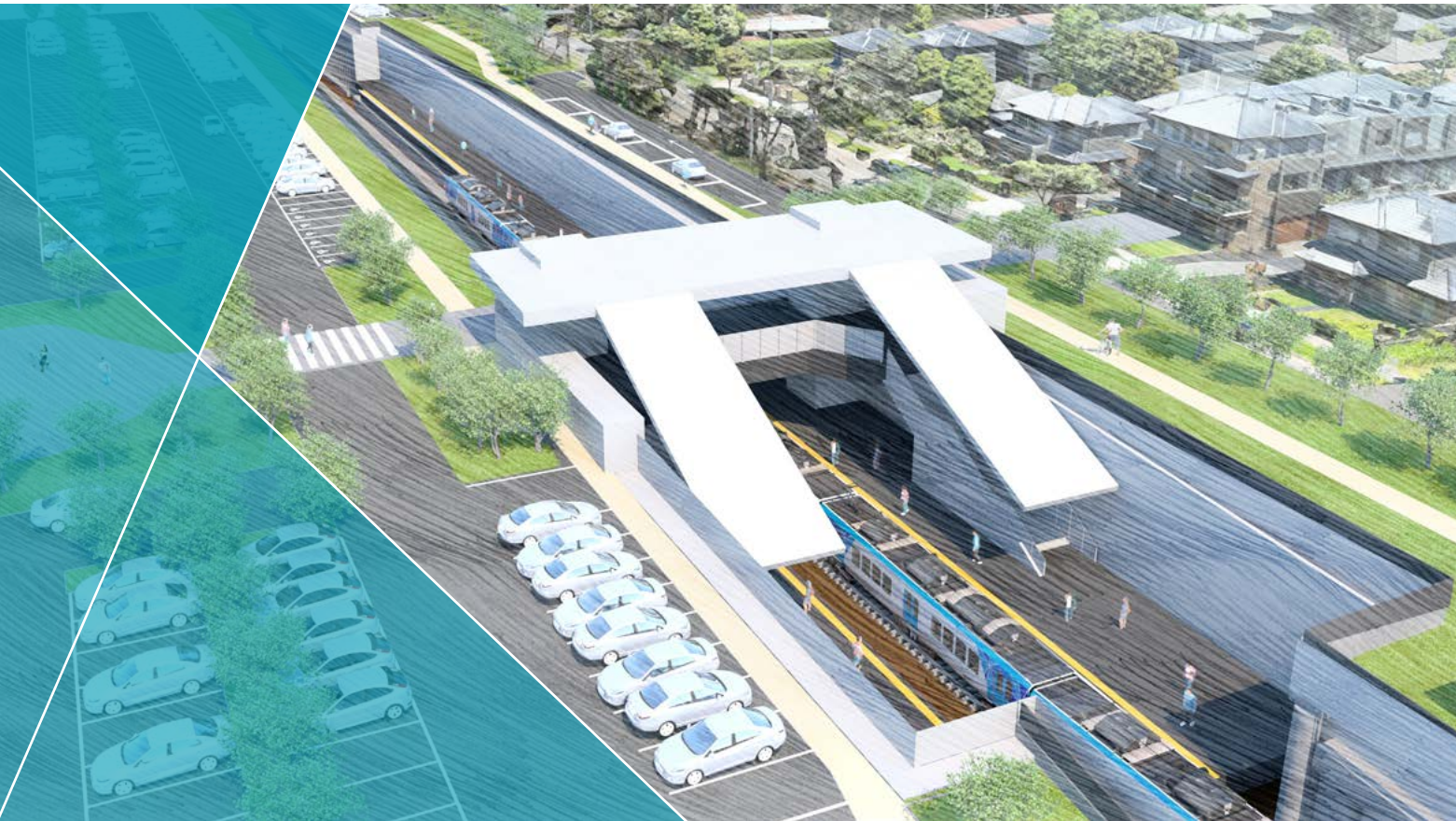


316 properties door knocked



Authorised and published by the Victorian Government, 1 Treasury Place, Melbourne

SEPA7397



Artist impression only. Subject to change.

Your new Ringwood East Station

The new Ringwood East Station will create safer and more direct links between the Ringwood East shopping precinct, public transport and upgraded parking.

Better connections

The new Ringwood East Station features a centrally located entrance to align with the vibrant Ringwood East shopping precinct.

The design includes a new station forecourt and enables direct pedestrian access to shops and other transport options.

A dedicated pick up and drop off zone on both sides of the station will allow passengers to be easily dropped off and collected close to the station.

More passengers will be able to leave their car at home, with the inclusion of a new Parkiteer bike cage and 18 bike hoops.

Improved facilities and safety

Safety is a key consideration in station designs, and the new Ringwood East Station will have better facilities for passengers, including more lighting and CCTV.

With modern facilities, the new station will also feature better weather protection to make passenger journeys more comfortable.

Improved accessibility

The new Ringwood East Station design will meet Australian design standards for accessibility and mobility.

Each platform on either side of the rail trench will have one entrance accessible by stairs and a lift to allow for all-ability access to trains.

Clearly marked accessible parking spaces will be located close to the station entrance.

Car parking



The new Ringwood East Station will have around 460 car parking spaces, including 12 accessible parking spaces.

A new Ringwood East Station and boom gate-free Dublin Road

Concept design. Subject to change.

