



LEVEL CROSSING REMOVAL PROJECT

Parkers Road, Parkdale level crossing

LEVEL CROSSING REMOVAL UPDATE

WARRIGAL ROAD, MENTONE
PARKERS ROAD, PARKDALE

ISSUE #03 – FEBRUARY 2022

Project consultation continues

The Victorian Government is investing more than \$4 billion in the Frankston line to improve safety, reduce congestion and allow for more trains to run more often.

We're removing the dangerous and congested Warrigal Road and Parkers Road level crossings by building a rail bridge over the roads and a new Parkdale Station.

A new rail bridge will reduce local congestion and allow more trains to run more often, as well as deliver new open space and better local connections for the community.

Since September last year we have held online and face-to-face community engagement sessions and have finalised our Parkdale Open

Space Advisory Panel. Panel members, who are representatives of the local community, will be integral in helping shape the open space at Parkdale.

The community can also share feedback on the open space via our new open space design survey.

We're now seeking further community ideas and input on the new open space, as well as feedback to inform the planning approval process.

Project features



New Parkdale Station



Improved safety for drivers, cyclists and pedestrians



Improved travel times and reduced congestion



New community facilities and open space



New walking and cycling path



Better local connections



SIGN UP FOR PROJECT UPDATES
levelcrossings.vic.gov.au

Authorised and published by the Victorian Government, 1 Treasury Place, Melbourne





New open space near Moreland Station

Parkdale Open Space Advisory Panel

In late 2021, we called for nominations for our Parkdale Open Space Advisory Panel to help us shape the new open space at Parkdale. We received many excellent submissions and have selected 14 community members who represent a diverse range of community backgrounds, views, experiences and interests.

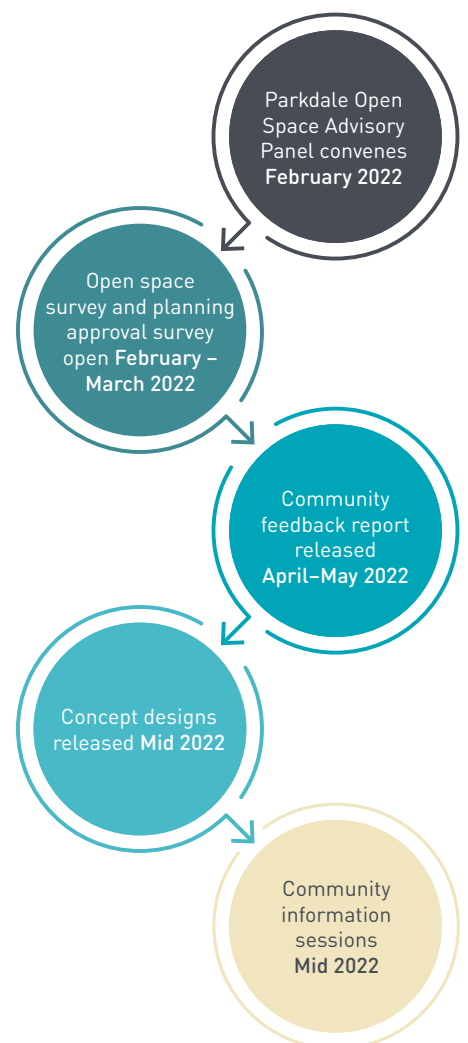
The panel will be independently facilitated, and alongside our 14 community members, will comprise local council representatives, and members of the project team, including architects and designers.

Panel members will liaise with local community groups and their networks to gather ideas and feedback on the new open space and disseminate relevant information to the community.

The panel will meet six times between **February and June 2022**, followed by additional meetings as required.

In addition to providing feedback through the panel, the local community will have many other opportunities to contribute to the design of the new open space through surveys and other avenues.

Community engagement timeline to mid 2022





Carrum open space

NEW OPEN SPACE

As part of the project, we're creating new community open space under and around the elevated rail line.

The design of this space will be developed in conjunction with our Parkdale Open Space Advisory Panel and with ongoing input from the community.

Opportunities for this new open space include new trees and landscaping, walking and cycling paths, playgrounds, recreation areas, sporting facilities, and more parking for the local shops, which will encourage more people to the shopping precinct.



*Hawkstowe open space and elevated rail (above)
Seaford walking and cycling path (below)*



Whether by car, bike or foot, locals will be able to get to shops, cafes and beach more quickly and safely.

New open space and playground near Moreland Station, Coburg



Native planting at Hawkstowe Station, South Morang



Help us shape early designs

To help us shape the early open space designs, we'd like to hear from you on the following aspects of the new open space:



the proportion of new trees and landscaping, open grassed areas, gathering places, and community facilities you would like to see (i.e. the balance between these elements)



how much of the total open space should be dedicated to parking (both trader and commuter car parking)



playground equipment style and design



connections between existing and proposed walking and cycling paths, as well as existing community facilities and the new open space



recreational, sporting and cultural facility preferences.

To provide more feedback on the open space, complete the survey at **engage.vic.gov.au/lxrp-mentone-and-parkdale**



Your feedback will help shape the early open space designs.

Warrigal Road, Mentone and Parkers Road, Parkdale level crossing removals





Moreland Station and open space

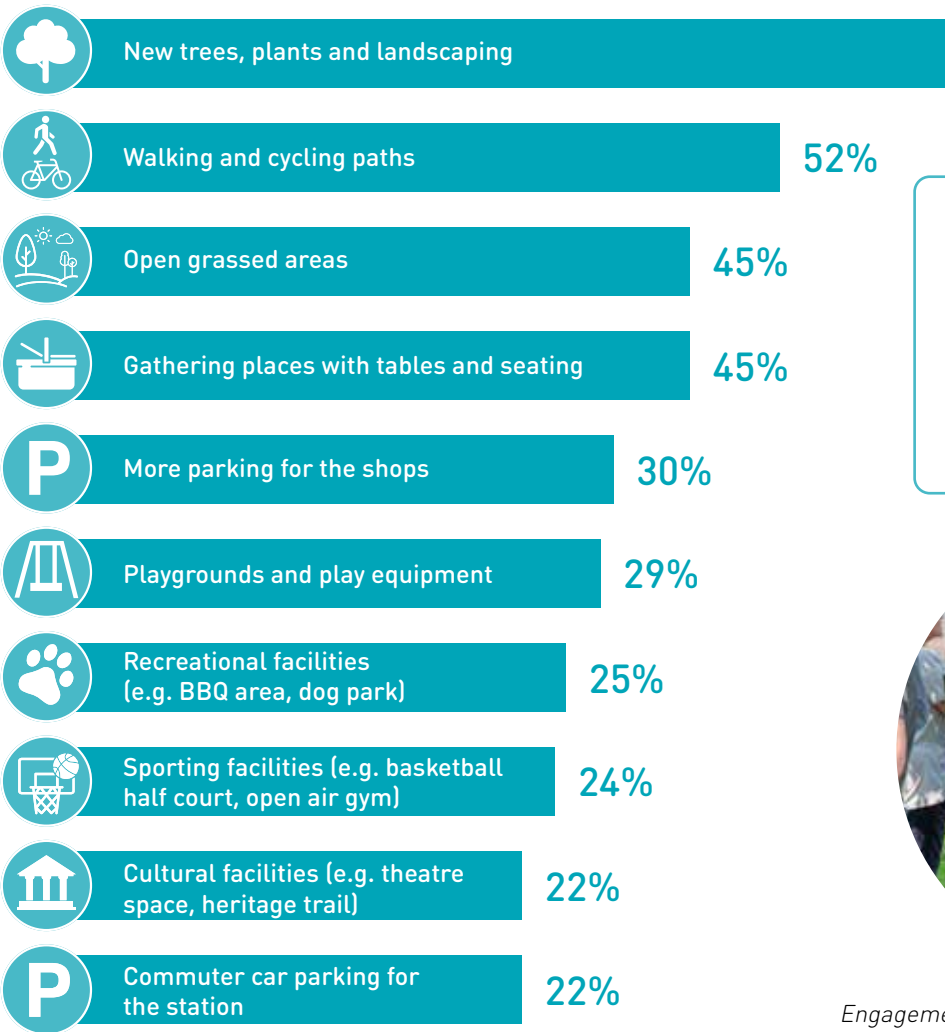
What we heard

In December and January, we asked you about what you would like to see in the new open space.

The community expressed a strong preference for new trees, plants and landscaping (70%), walking and cycling paths (52%), open grassed areas (45%) and gathering places with tables and seating (45%).

Other community preferences were split between more parking for the shops, playgrounds and play equipment, recreational and sporting facilities, cultural facilities and more commuter car parking for the station.

Original ideas included a skate park, community garden, a reading place, and bike repair and maintenance facilities.



A community consultation report will be available online April-May 2022, including all of the feedback we receive about the new open space.



Engagement at Mentone Garden Event, January 2020

Planning approval

Planning approval for this project will proceed under Clause 52.03
– Level Crossing Removal Project of the Kingston Planning Scheme.

LXRP is seeking community feedback on a range of planning matters, including:

- project boundary
- construction-related impacts
- environmental impacts
- amenity impacts
- native vegetation
- heritage.

Consultation is now open, providing you with the opportunity to formally submit your feedback.

Planning submissions can be made online at engage.vic.gov.au/lxrp-mentone-and-parkdale

If you would like a hard copy submission form sent to you, please contact us on **1800 105 105** or email contact@levelcrossings.vic.gov.au

Planning submissions can be made until **11.59pm Monday 21 March 2022**.

All feedback received will be included in a consultation summary report, which will inform the Minister for Planning's assessment of the project.

NEXT STEPS

Along with our continuing technical investigations, we'll use your feedback to progress the design for the project and to seek planning approvals. There will be further opportunities to learn more and provide feedback as the project progresses.

We'll be coming back out to you in the coming months to share concept designs and ask for your feedback on design elements of the new station precinct and open space such as:



Overall look and feel



New station materials



Early plans for the new open space



Landscaping and seating options



Location and inspiration for public art



Potential for commuter parking and more trader parking

Planned project timeline



Late 2021

- Project introduction online sessions
- Vision and Values consultation
- Open Space Advisory Panel nominations
- Face to face community engagement sessions



Early 2022

- Open space consultation
- Planning consultation
- Open Space Advisory Panel meetings commence



Mid 2022

- Early station precinct and open space designs consultation
- Community engagement sessions
- Open Space Advisory Panel meetings continue



Late 2022

- Refined station precinct and open space designs consultation
- Community engagement sessions
- Stakeholder Liaison Group nominations



2023

- Final designs released
- Start of works



2025

- Project completion

CONTACT US

contact@levelcrossings.vic.gov.au
1800 105 105

Level Crossing Removal Project
GPO Box 2392, Melbourne VIC 3001

Follow us on social media
[@levelcrossings](https://twitter.com/levelcrossings)



Translation service – For languages other than English, please call 9209 0147.

Please contact us if you would like this information in an accessible format.

If you need assistance because of a hearing or speech impairment, please visit relayservice.gov.au