

What we heard

July 2022



Australian Government



Project overview

Melbourne Airport Rail will connect Melbourne Airport to Victoria's regional and metropolitan train network for the first time.

Melbourne Airport Rail will run on dedicated, new tracks from a new premium station at Melbourne Airport through to Sunshine Station, where it will then travel through the Metro Tunnel into the heart of the CBD before continuing on to the Cranbourne and Pakenham lines.

For all passengers, Melbourne Airport Rail will provide:

- access to the entire public transport network including trains on the Geelong, Ballarat, Bendigo and Gippsland lines with a single interchange
- direct access to Melbourne Airport from 30 stations without the need to change trains, for passengers travelling from the CBD and the booming south-eastern suburbs
- a new premium station at Melbourne Airport with 10-minute services

- seamless travel to the heart of Melbourne's CBD in around 30 minutes
- direct access to key sites including Melbourne University, the Parkville medical precinct and the St Kilda Road business precinct.
- The Australian and Victorian governments have committed \$5 billion each to deliver Melbourne Airport Rail. Construction will begin in 2022 with a target opening date for Melbourne Airport Rail of 2029, subject to relevant Victorian and Federal planning, environment and other government approvals.

Rail Projects Victoria (RPV), a project team within the Major Transport Infrastructure Authority (MTIA), is overseeing the planning, development and community consultation which will inform the delivery of Melbourne Airport Rail.

Community feedback

In late 2020, RPV began talking to the community and finding out what you had to say about Melbourne Airport Rail.



Our engagement has happened in three phases:

Phase one

December 2020 – March 2021

We asked local communities what was important to them and what they to identify opportunities for improvements as part of the Melbourne Airport Rail project.

Phase two

June 2021 – October 2021

We sought community feedback on key elements of the Melbourne Airport Rail project scope and potential construction impacts, with the aim of incorporating and addressing concerns in design and construction approaches.

Phase three

December 2021 – February 2022

We encouraged the community to provide further feedback about planning and environment matters, as well as gathering insights for walking and cycling opportunities that can be potentially included as part of the project.

Phase one

December 2020 – March 2021

From December 2020 to March 2021, RPV asked local communities what is important to them and what they think are opportunities for improvements as part of the Melbourne Airport Rail project.

During this phase, community members headed to our virtual information session and submitted feedback via our online survey or contributed to our interactive map.

We received thousands of surveys and comments from communities along the Melbourne Airport Rail corridor, as well as from wider Melbourne and around Victoria.



The top feedback themes identified by the community were:

Construction impacts

While most respondents acknowledged the benefits of Melbourne Airport Rail being built, there was some concern about the potential impacts of construction for local communities.

■ **“It’s stressful if not managed properly.”**

Local amenity

There was a very strong sense of local pride in the responses, with many locals raving about their communities and highlighting what is unique to their area.

Environment

There was an overwhelming number of responses about the importance of protecting our environment and highlighting local examples of loved parks and green spaces in the community.

■ **“Melbourne’s west has severely low vegetation density... What little vegetation we have must be preserved, or ideally amplified.”**

Safety

Ensuring the safety of the community in all aspects of Melbourne Airport Rail is of the utmost importance for all involved.

Heritage

The community is passionate about the protection and celebration of history in the local area, with the preservation of Aboriginal culture and the John Darling silos mentioned the most.

■ **“Having appropriate recognition [of Aboriginal culture] during and after the project is important.”**

Public transport connections

Community feedback has highlighted the importance of public transport connections both for local communities, but also for wider Melbourne and regional Victoria.

Phase two

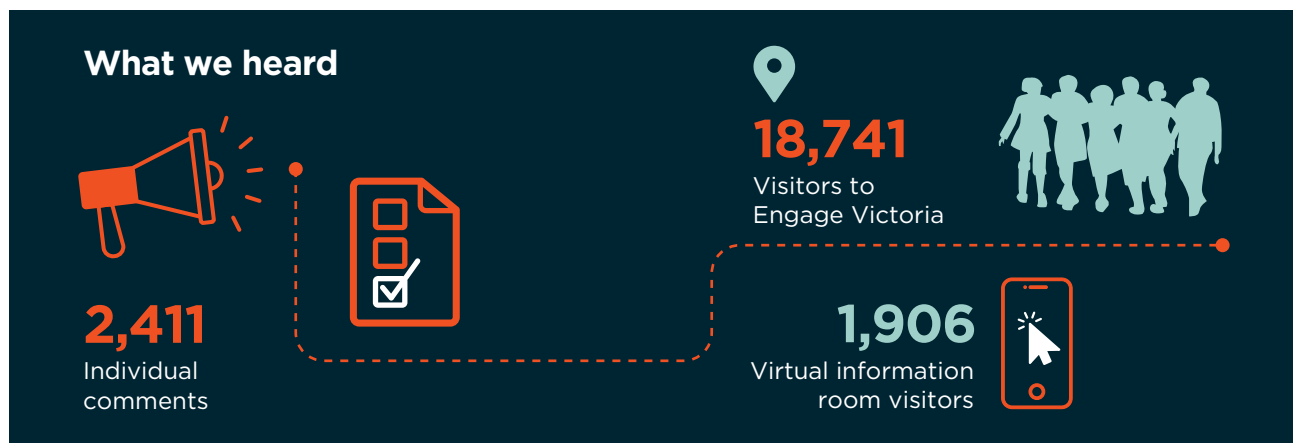
June 2021–October 2021

Between June and October 2021, we sought community feedback on key elements of the Melbourne Airport Rail scope and potential construction impacts.

Engagement during this phase was predominantly online with information shared on the Melbourne Airport Rail website, the Engage Victoria website, a refreshed virtual information session, and through

online briefings with local community groups.

We had a huge number of responses from the community on all aspects of the project between June and October 2021.



Community members were asked to submit importance ratings and feedback on:

Sunshine Station transport superhub

Locals love Sunshine and would like to see the area revitalised and developed as part of Melbourne Airport Rail. This includes better connectivity for pedestrians and cyclists, as well as designing the precinct to enable future developments.

“[Melbourne] Airport Rail will be a fantastic addition to the rail network, but new infrastructure needs to see improvements made to road, cycling and pedestrian connectivity and function as well.”

Albion flyover and station works

Albion locals are passionate about their neighbourhood and would like to see a design which enhances the views of the heritage-listed silos, as well as allowing for further revitalisation of the area.

“I don’t oppose the flyover, but I think it needs to be visually appealing and not block the historical features of the area.”

Shared use overpass in Sunshine North

Locals are enthusiastic about ensuring the Sunshine North shared use overpass provides easy and universal access for pedestrians, cyclists, people with disabilities, parents with prams, and many other users.

New bridge over the Maribyrnong River Valley

Locals want the project team to ensure the new bridge complements the existing heritage-listed rail bridge. There were also suggestions for Melbourne Airport Rail to potentially include further shared use paths and connections in this area, as well as preserving the local flora and fauna.

“The thing I’m most concerned about is making sure the local grasslands and the diverse flora and fauna of the valley are not negatively impacted.”

New bridge over the Western Ring Road (M80)

The most common concerns about the new rail bridge over the Western Ring Road were regarding traffic impacts while the bridge is being built, as well as the potential increase in noise once Melbourne Airport Rail is up and running.

Construction impacts

Preservation of the local flora and fauna, and minimising tree removal as much as possible during construction, were the issues of most importance for the community.

Phase three

December 2021 – February 2022

From December 2021 to February 2022, we shared information about the planning pathway being undertaken to obtain formal state government approval to deliver Melbourne Airport Rail.

During this phase, the community was asked to submit any feedback they had regarding planning and environment matters, in addition to what we had heard in previous phases of engagement.

We also asked the community to offer their insights for walking and cycling opportunities that can be potentially included as part of Melbourne Airport Rail.

Overall, we received 164 comments regarding planning and environment matters, and 64 suggestions for walking and cycling opportunities.

To gather this feedback, we published an online survey via the Melbourne Airport Rail website and promoted the engagement via online channels, a community-wide newsletter, letters to local residents and advertising.

Of the comments received throughout this period, the main themes were:

Walking and cycling integration

“It would be important for me to provide for additional, separated bicycle lanes and make sure existing bicycle lanes are maintained or enhanced.”

Construction impacts, including traffic management

Operational noise impacts

“The design of the [Melbourne] Airport Rail must take reduction of transport noise as one of its main aims.”

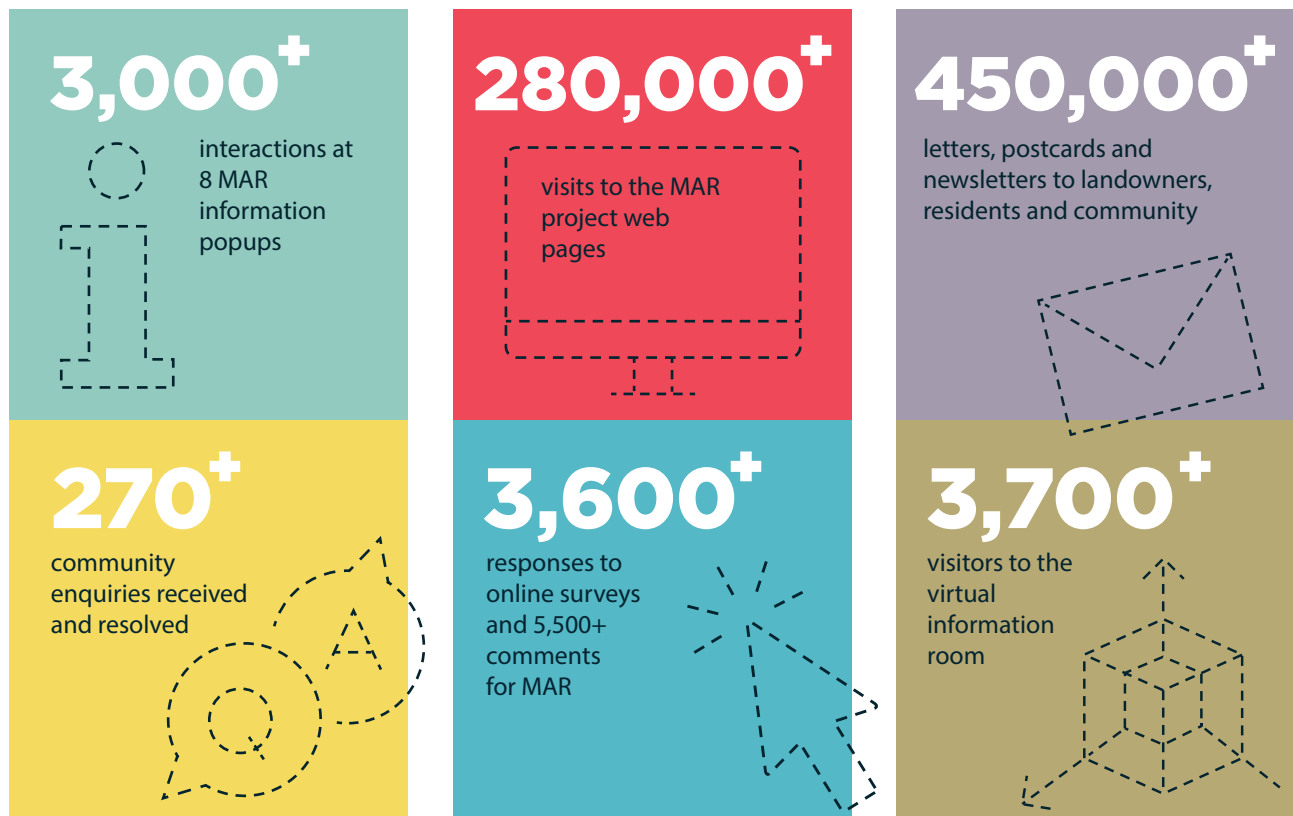
Through all phases of engagement, we have consistently heard that construction and associated impacts such as increased truck movements, noise and vibration are a concern for the community.

We have shared this feedback with potential delivery partners during the procurement process, encouraging them to address these concerns when developing construction methodologies.



How we have engaged

RPV has engaged with as many local communities and stakeholders across Melbourne as possible over the past three years, with face-to-face opportunities, online surveys and online briefings supported with newsletters, fact sheets, virtual information sessions, social media and website updates and letterbox drops to the local areas.



How feedback has helped shape Melbourne Airport Rail

Every piece of your feedback – from pins on a map to ratings of importance through to individual comments – is helping plan and design Melbourne Airport Rail.

From over 5,500 individual comments and over 3,600 survey responses, community and stakeholder feedback has been used to shape the design and construction methodology for Melbourne Airport Rail, including:

- refinement of the design of the flyover at Albion, and updated the design requirements for the delivery partner
- changes to the placement of shared use paths at the Western Ring Road and Albion
- updates to the design of the new bridge over the Maribyrnong River Valley to further reduce any potential environmental impacts.



Working with our delivery partners

The feedback received throughout these engagement phases has been provided to the delivery partners who will be constructing Melbourne Airport Rail.

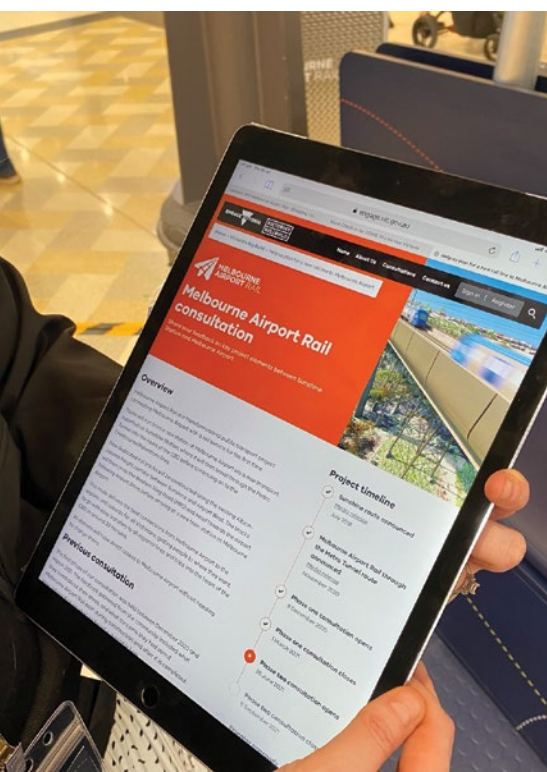
The delivery partners are the construction consortiums that will build particular sections, or packages, of the project to further refine designs and define plans to construct their section of Melbourne Airport Rail.

RPV has provided detailed requirements for delivery partners to build, including the community and stakeholder feedback we have received so far.

The delivery partners will, in turn, provide any updated designs and their methods for construction which will show how they have interpreted and included these requirements and pieces of feedback. They may also undertake further consultation on detailed elements on their designs.

Once received, RPV will share these updates with the public to ensure the community is kept up to date on the progress of Melbourne Airport Rail. Delivery partners are expected to be progressively appointed from 2022 onwards.

Feedback from each engagement phase is taken to the project teams at key milestones.



What's next?

In the second half of 2022, construction will begin on Melbourne Airport Rail*. As the project progresses, there will be many opportunities to share your local insights.

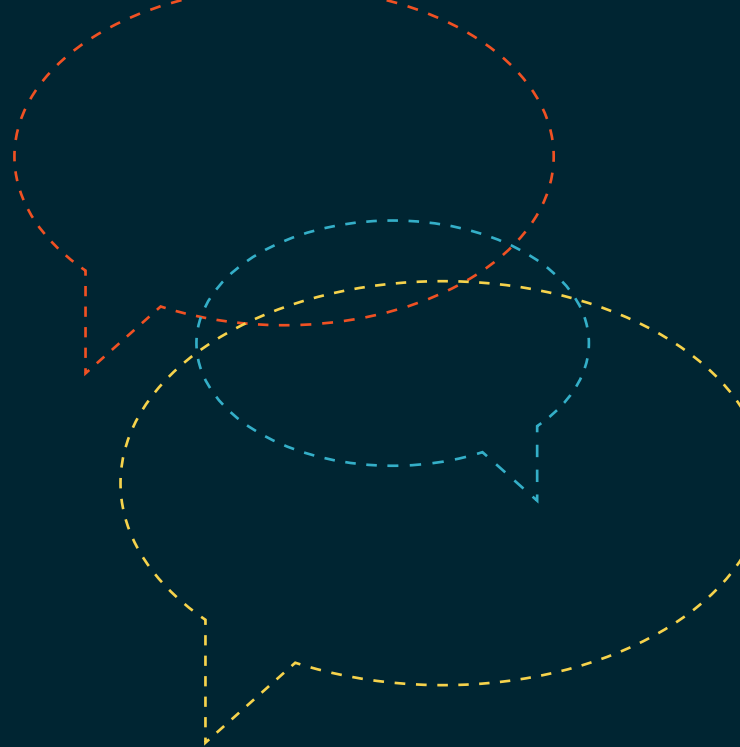
There are seven works packages associated with Melbourne Airport Rail, which will have varying delivery partners. Once a delivery partner has been awarded a package of work, there will be further consultation on how the design of the project may have changed and how it is progressing towards construction.

We look forward to sharing these designs when they are available and will invite the community to participate in future consultation phases as they happen.


You can stay updated by subscribing to our newsletter at airportrail.vic.gov.au


Thank you to everyone who took the time to provide your thoughts and feedback for Melbourne Airport Rail.

*Subject to planning and environmental approvals.



More information

 airportrail.vic.gov.au

 1800 105 105
(24 hours a day, 7 days a week)

Rail Projects Victoria
PO Box 2392, Melbourne, VIC 3001



Interpreter Service **(03) 9209 0147**

It should be noted that this information is current at the time of printing, however due to unforeseen circumstances, changes may occur. Please visit railprojects.vic.gov.au for the latest updates.