

Works Notification

Out of hours works Kensington

Saturday 25 February and Sunday 26 February 2023

As part of works to construct the new South Kensington Station forecourt, there will out of hours works while trains are not running.

What we are doing

- Out of hours works are required to support the construction of the new South Kensington Station forecourt during a scheduled shutdown of the Werribee and Williamstown lines
- Other activities include realigning Childers Street, constructing and landscaping garden beds, installing temporary scaffold, new paving, seating, decking and 25 bike storage hoops
- Works will require the use of a crane, an elevated work platform, an excavator and crews with hand tools.

When

- Between 7am and 7pm
- Saturday 25 February and Sunday 26 February 2023.

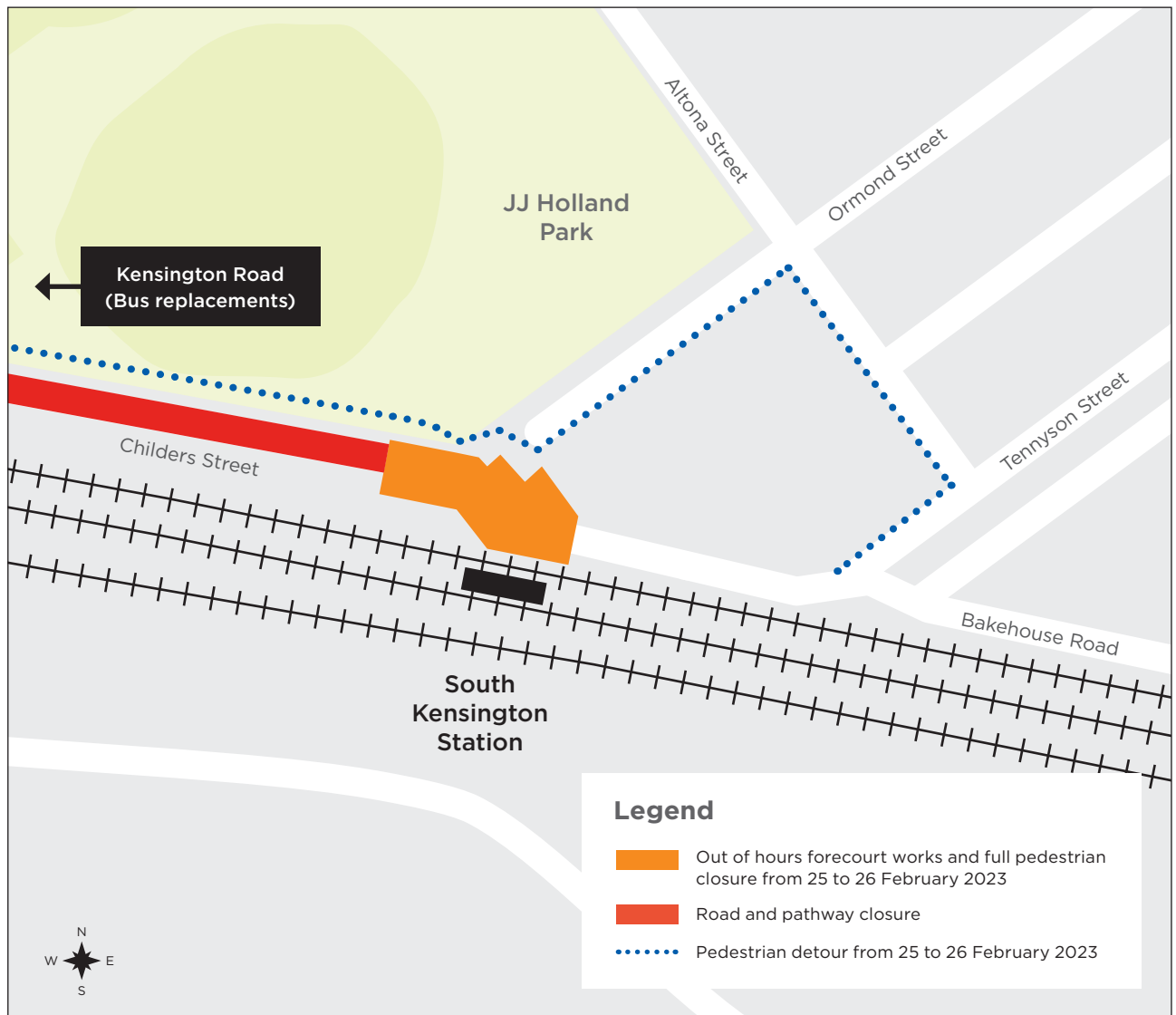
What you should be aware of

- To ensure the safety of passengers and pedestrians, these works will need to take place when South Kensington Station is not in operation
- To support scaffold installation works, Childers Street will close to pedestrians outside the station at various times while train services are not running. Pedestrian access will remain in place during train service hours
- These activities are expected to generate medium levels of noise
- There will be an increase in deliveries and construction vehicles accessing the site via Childers Street
- Temporary light towers may be required during this time. Where possible, they will be positioned to face away from residential properties
- For a full list of key elements of the final urban design please visit metro.tunnel.vic.gov.au/construction/Kensington.

Rail corridor works and bus replacements

Buses will replace trains on the Werribee and Williamstown lines from 12.05am Saturday 25 February to last service Sunday 26 February.

Please visit ptv.vic.gov.au or call **1800 800 007** for more information on night works within the rail corridor and to plan your journey.



More information

To find out more about the Metro Tunnel Project:

 metrotunnel.vic.gov.au

 1800 105 105 (24 hours a day, 7 days a week)

Rail Projects Victoria
PO Box 4509, Melbourne, VIC 3001



Interpreter Service **(03) 9209 0147**

It should be noted that this information is current at the time of printing, however due to unforeseen circumstances, changes may occur. Please visit railprojects.vic.gov.au for the latest updates.