



Lodged in the Central Plan Office
 Dated this 2nd day of February 2023

Tom Hawkins
 for Craig Leslie Sandy, Surveyor-General Victoria.
 No warranty is given as to the accuracy or completeness of this plan.

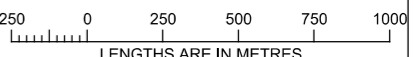
PLAN TO DESIGNATE THE PROJECT AREA PURSUANT TO SECTION 95(2) MAJOR TRANSPORT PROJECTS FACILITATION ACT 2009

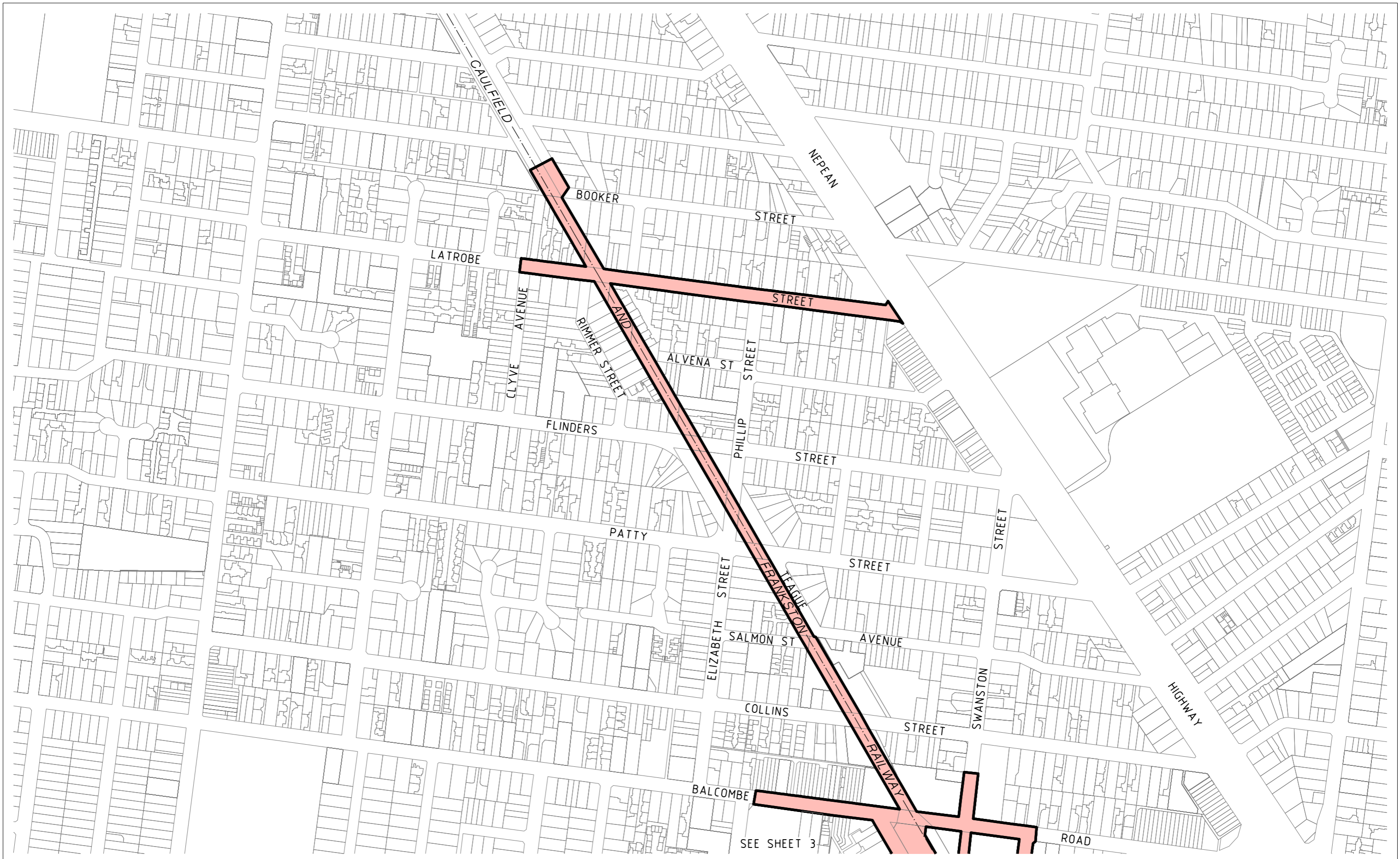
LEGEND	
	PROJECT AREA
	SHEET NUMBER AND LOCATION

PARKDALE LEVEL CROSSING REMOVAL PROJECT

MTPF ACT PROJECT AREA

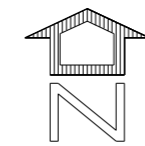


LEVEL CROSSING REMOVAL PROJECT			
 LENGTHS ARE IN METRES			SCALE 1:25000
ORIGINAL SHEET SIZE: A3	INDEX SHEET 1 of 5	LEGL./21-538	



PLAN TO DESIGNATE THE PROJECT AREA PURSUANT TO SECTION 95(2) MAJOR TRANSPORT PROJECTS FACILITATION ACT 2009

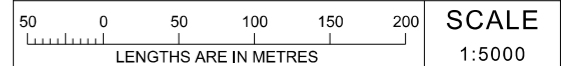
PARKDALE LEVEL CROSSING REMOVAL PROJECT MTPF ACT PROJECT AREA



MGA2020 ZONE 55



LEVEL CROSSING REMOVAL PROJECT



LEGEND



PROJECT AREA

ORIGINAL SHEET
SIZE: A3


SHEET
2

LEGL./21-538



PLAN TO DESIGNATE THE PROJECT AREA PURSUANT TO SECTION 95(2) MAJOR TRANSPORT PROJECTS FACILITATION ACT 2009

LEGEND

 PROJECT AREA

PARKDALE LEVEL CROSSING REMOVAL PROJECT

MTPF ACT PROJECT AREA



LEVEL CROSSING REMOVAL PROJECT

50 0 50 100 150 200 **SCALE**
 LENGTHS ARE IN METRES 1:5000

ORIGINAL SHEET SIZE: A3	SHEET 3	LEGL./21-538
----------------------------	------------	--------------



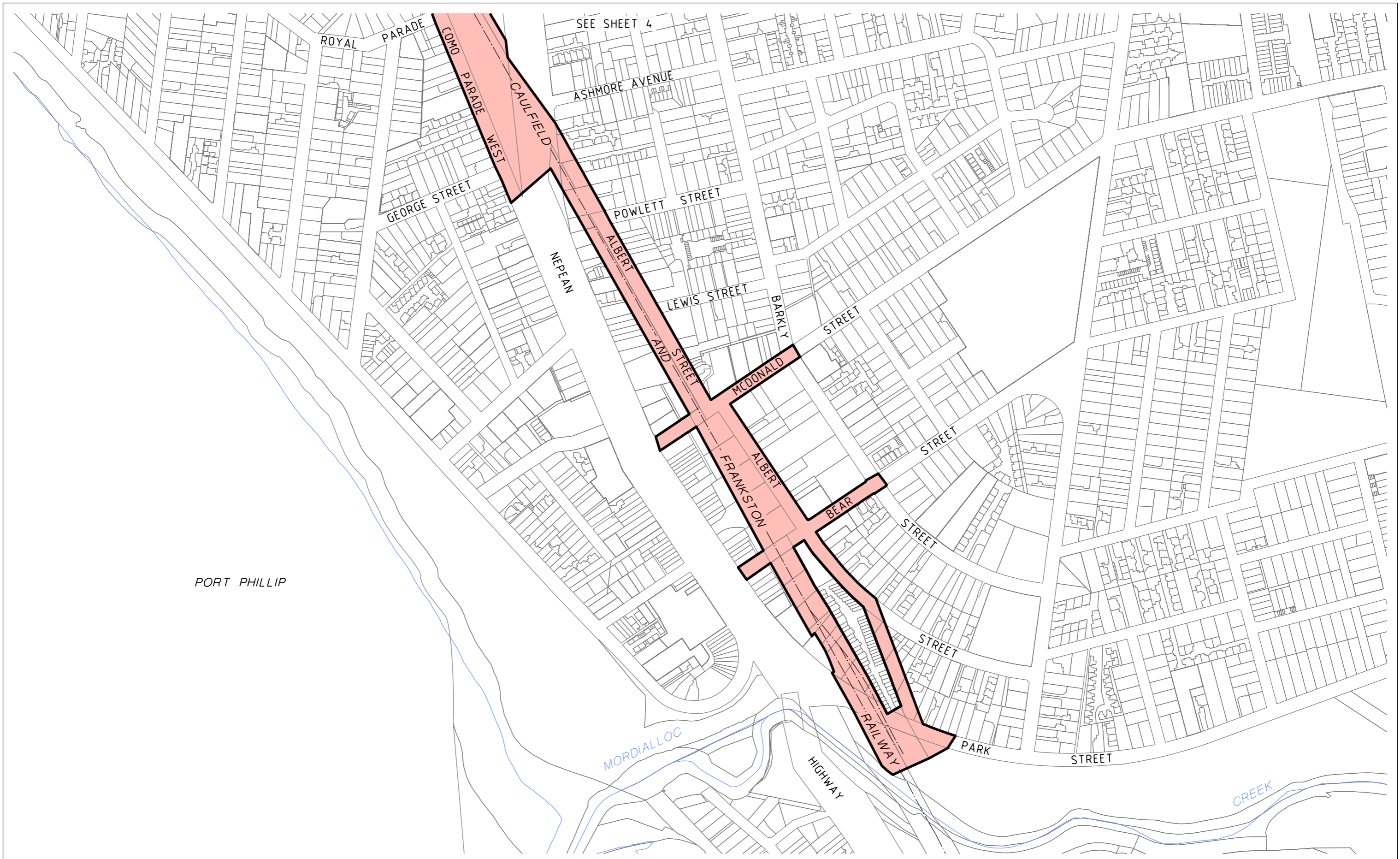
PLAN TO DESIGNATE THE PROJECT AREA PURSUANT TO SECTION 95(2) MAJOR TRANSPORT PROJECTS FACILITATION ACT 2009

PARKDALE LEVEL CROSSING REMOVAL PROJECT MTPF ACT PROJECT AREA



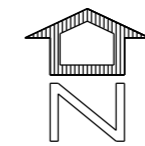
LEVEL CROSSING REMOVAL PROJECT		
50 0 50 100 150 200	SCALE	
LENGTHS ARE IN METRES		
ORIGINAL SHEET SIZE: A3	SHEET 4	LEGL./21-538

LEGEND
 PROJECT AREA



PLAN TO DESIGNATE THE PROJECT AREA PURSUANT TO SECTION 95(2) MAJOR TRANSPORT PROJECTS FACILITATION ACT 2009

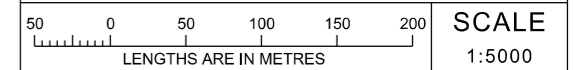
PARKDALE LEVEL CROSSING REMOVAL PROJECT MTPF ACT PROJECT AREA



MGA2020 ZONE 55



LEVEL CROSSING REMOVAL PROJECT



LEGEND



PROJECT AREA

ORIGINAL SHEET
SIZE: A3

SHEET
5

LEGL./21-538