



Works Notification

Works happening in your area

Heatherton | November - December 2023

Works are underway in Heatherton to deliver SRL East for Melbourne and Victoria.

We previously notified the community we would be undertaking site investigations to measure and locate underground services and assess ground conditions along Old Dandenong Road. These works have been rescheduled and will now be undertaken from mid-November.

We'll also be undertaking site establishment and site investigations, including piling trials, in and around our site at 217 Kingston Road, Heatherton to prepare for the construction of the Tunnel Access Structure.

These works will commence from mid-November and take up to six weeks to complete.

Site establishment and investigations

The following works will be undertaken during extended daytime working hours (approvals in place):

- Installation of traffic barriers and signage to create a safe working area
- Installation of new utility connections
- Removal of traffic barriers once works are complete
- Tree and vegetation removal
- Survey works on Kingston Road
- Drilling to assess ground conditions.

The following works will be intermittently undertaken during night-time working hours:

- Utility connections on Old Dandenong Road
- Traffic barrier modifications and signage installation on Old Dandenong Road, Kingston Road and Dingley Bypass
- Delivery of heavy equipment and piling rigs to site.

Traffic detours and reduced speed limits will be in place on Old Dandenong Road, Kingston Road and Dingley Bypass to ensure drivers, pedestrians and workers remain safe. Please see over the page for details.

All timings are weather dependent.

Day-time working hours

6am – 6pm, Monday to Friday

6am – 3pm, Saturday

Night-time working hours

6pm – 6am, Monday to Sunday

How we will manage our works

We will be using equipment that generates medium levels of noise, dust and vibrations.

We will minimise impacts to the community by:

- Positioning equipment as far as possible from residents and businesses where possible
- Turning equipment off when not in use
- Use of water carts onsite to minimise dust
- Positioning light towers away from residential properties and businesses
- Regularly keeping the community updated via works notifications as construction progresses.

Local traffic and public transport changes

Traffic and public transport changes are needed to complete these works with detours and reduced speed limits in place at times. Vehicle and pedestrian access to homes and businesses will be maintained at all times with help from traffic controllers.

Please see the table and map below for details of traffic and public transport changes in the area from mid-November for up to six weeks.

Location	Travel change
Old Dandenong Road	<ul style="list-style-type: none">– Overnight road closure between Kingston Road and Elder Street South for up to four nights for traffic barrier installation and removal.– Day-time and overnight northbound road closure once barriers are installed. Traffic maintained southbound.– No left turn onto Kingston Road during some day and overnight works.
Kingston Road	<ul style="list-style-type: none">– Changed traffic conditions between Nicholas Grove and Dingley Bypass. Traffic maintained in both directions.– Intermittent changed overnight traffic conditions between Old Dandenong Road and Dingley Bypass. Traffic maintained in both directions.– No left turn onto Dingley Bypass during some overnight works.
Dingley Bypass	<ul style="list-style-type: none">– Changed traffic conditions north of Kingston Road during days and some overnight works. Traffic maintained in both directions.
Route 631 northbound bus stops closed	<ul style="list-style-type: none">– Old Dandenong Road outside Nellie Kelly Nursery.– Old Dandenong Road, north of Henry Street.– Clarinda Road, east of Old Dandenong Road.

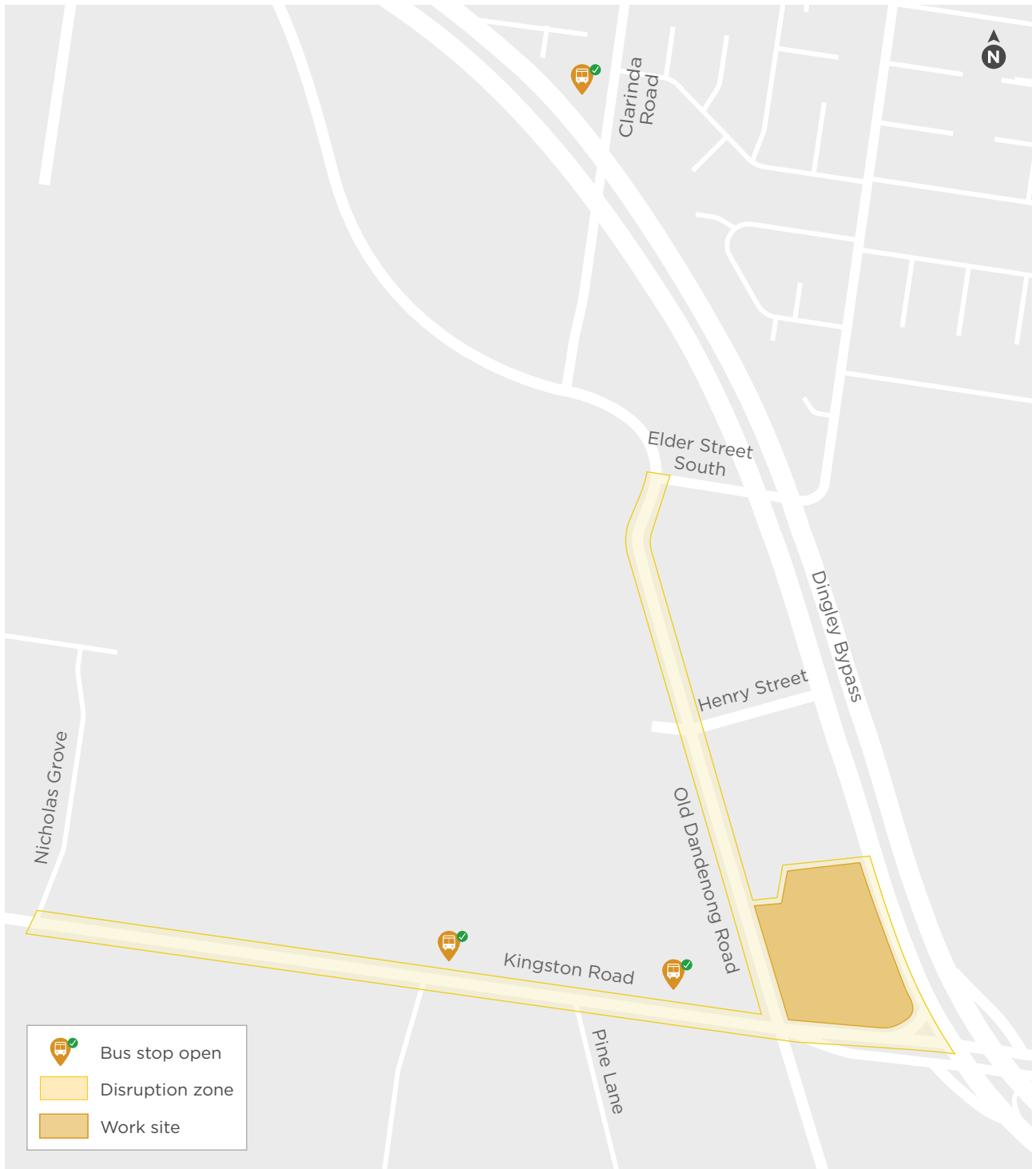
Nearest available bus stops are located on Kingston Road and Clarinda Road. Northbound buses will bypass Old Dandenong Road and detour via Kingston Road, Dingley Bypass and Clarinda Road. The southbound bus route will operate as usual.

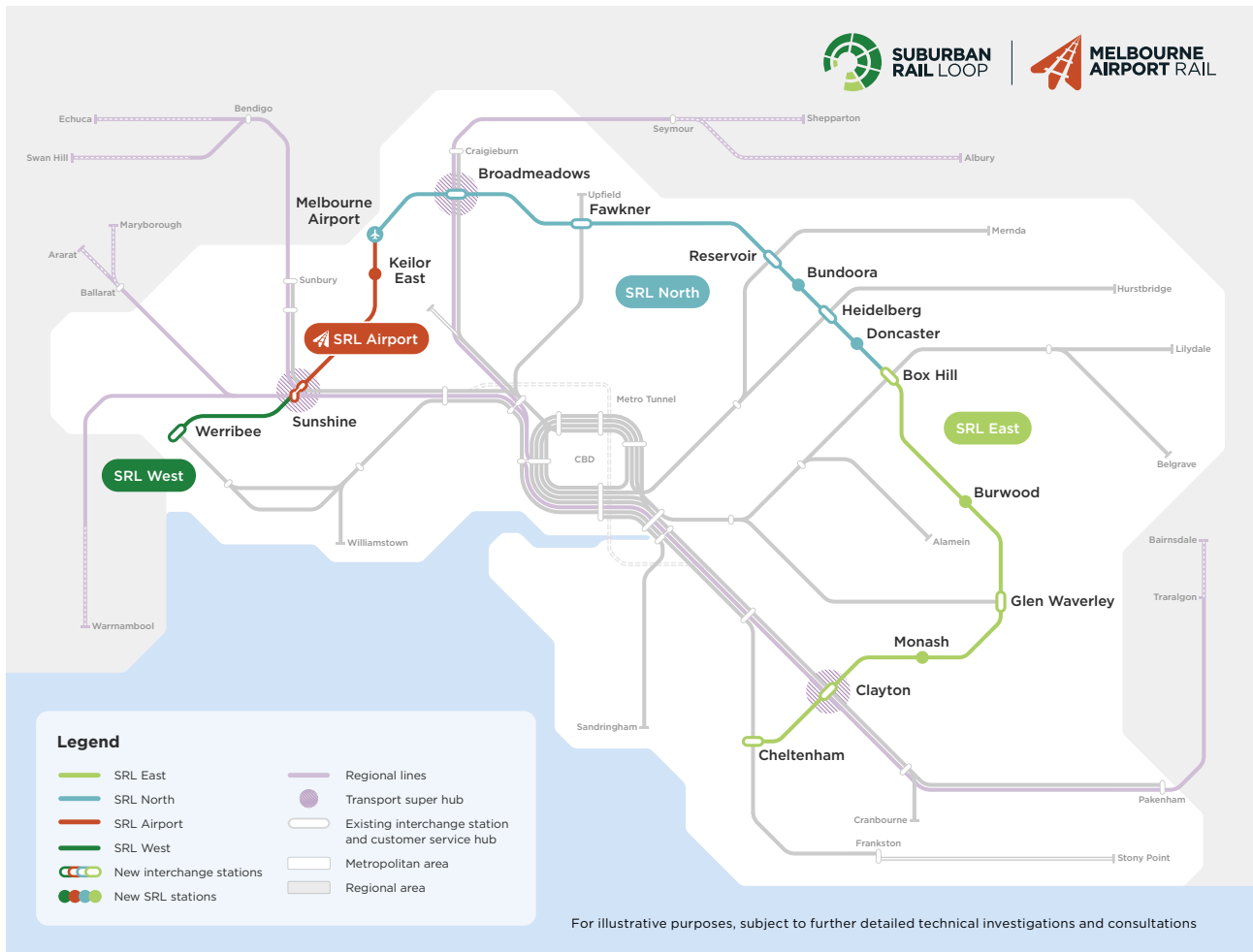
Noise impacts

As with all major infrastructure projects, surrounding communities may experience some impacts during construction. The project will support businesses and residents to ensure people can continue to live, work, study and shop in their local community.

Please contact us on **1800 105 105** to discuss support available if you are impacted by our works.

Heatherton works from mid-November





Thank you for your patience and cooperation as we progress the delivery of SRL East



To receive SRL East works reminders via **SMS** simply text **HEATHERTON** to **0429 469 592**

More information

To find out more about Suburban Rail Loop:

- 🏠 suburbanrailloop.vic.gov.au
- ✉ contact@srla.vic.gov.au
- 📞 1800 105 105 (24 hours a day, 7 days a week)

Suburban Rail Loop Authority
PO Box 24214, Melbourne VIC 3001

Interpreter Service (03) 9209 0147

It should be noted that this information is current at the time of printing, however changes may occur. Please visit suburbanrailloop.vic.gov.au for the latest updates.