

Permanent Access Changes

NARRE WARREN-CRANBOURNE ROAD UPGRADE

**BIG BUILD
ROADS**



We're building extra lanes and upgrading intersections on Narre Warren-Cranbourne Road to make it quicker, easier, and safer to get you where you need to be.

Image above: Artist's impression of the new intersection at Berwick-Cranbourne Road and Cameron Street. Subject to change.

Changes to the way you access local streets

As part of the Narre Warren-Cranbourne Road Upgrade, we're adding a centre median and extra lanes in both directions on Narre Warren-Cranbourne Road between Thompsons Road and the South Gippsland Highway to make it easier for you to get around Cranbourne.

When we upgrade main roads by adding new lanes, it's important to restrict where cars can turn right across multiple lanes into or out of driveways and side roads.

These changes improve safety for road users, lower the risk and severity of crashes and greatly improve traffic flow by directing traffic to designated intersections, preventing drivers from attempting risky and uncontrolled movements.

The new service road will also change the way you travel onto Narre Warren-Cranbourne Road. Right turns and U-turns will only be allowed at certain locations on Narre Warren-Cranbourne Road.



Sign up for updates
Subscribe for email and SMS updates
at bigbuild.vic.gov.au/roads-subscribe

U-turn locations





Changing the way you travel

The project will change the way you travel around your local area. As we'll restrict where cars can turn right across multiple lanes, drivers will need to make a U-turn at the closest intersection with traffic lights, or dedicated U-turn bays to access certain streets and properties.

Safe U-turn opportunities will be at the following intersections along Narre Warren-Cranbourne Road:

- Thompsons Road
- Majestic Boulevard
- Kingdom Drive and Spirit Boulevard
- Linsell Boulevard
- Camms Road and Rochester Parade
- New Holland Drive and Lyall Street
- Berwick-Cranbourne Road
- Sladen Street
- Elmslie Drive
- South Gippsland Highway.

New service road

As part of the Narre Warren-Cranbourne Road Upgrade, the existing roads between the South Gippsland Highway and Camms Road will be converted to a service road in some sections. This will improve safety for road users by reducing the number of vehicles pulling in and out of Narre Warren-Cranbourne Road. It will also make it safer for residents and workers to access their homes and businesses along Narre Warren-Cranbourne Road.

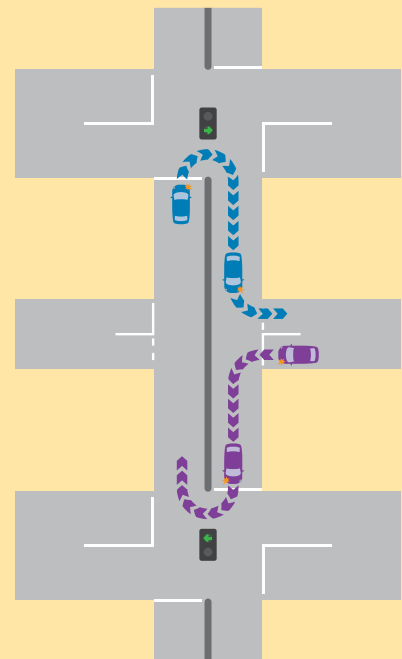
The existing road will be converted to a service road on the western side of Narre Warren-Cranbourne Road between:

- South Gippsland Highway and Sladen Street
- Childers Street and Bakewell Street
- Lyall Street and Loch Street.

The existing service roads between Bellarine Drive and Thompsons Road will remain. View the map to see how you can enter and exit the service road.

Entering and exiting side streets

When the upgrade is complete, some locals roads and property access will be changed to left in and left out only via the new service road.





When the Narre Warren-Cranbourne Road Upgrade is complete, you may have to travel slightly further to access the new dedicated U-turn bays or traffic lights. However, your journey will be safer and more reliable.



Safety barriers lower the risk and severity of crashes along Narre Warren-Cranbourne Road.

Safety along Narre Warren-Cranbourne Road

Safety is one of the primary objectives of the Narre Warren-Cranbourne Road Upgrade. Providing an access point to the service roads would increase the number of vehicles pulling in and out of Narre Warren-Cranbourne Road and increase the risk of accidents.

The new service road between Childers Street and Bakewell Street will have no direct access from Narre Warren-Cranbourne Road. Instead, drivers wishing to access the side roads or properties on the service roads will need to travel via Sladen or Lyall streets.

The existing road between Stawell Street and just past Loch Street will be converted to a new two-way service road. There will be a service road entrance north of Marklin Street, and service road exit onto Narre Warren-Cranbourne Road near Loch Street. On average, it is expected to take an extra minute for drivers to reach their destination.

The new service roads will make it safer for residents and locals to access their homes, businesses and community facilities, as well as making it safer for the tens of thousands of drivers who use Narre Warren-Cranbourne Road every day.

An active community

Pedestrians and cyclists will also benefit from the upgrade, with improved access to cycling and walking paths, safer road crossings and landscaping along the road.

As part of the upgrade, there will be over nine kilometres of cycling and walking paths for you to enjoy on both the north and south sides of Narre Warren-Cranbourne Road. We'll add access for cyclists and pedestrians to cross over the South Gippsland Highway at the Cranbourne Racecourse safely.

We're making it safer and easier for you to access the things you love about your local area, including public transport, local shops and community facilities.

Stay informed

For more information on disruptions, visit bigbuild.vic.gov.au/roads-subscribe to subscribe to email updates or text **NWCR** to **0499 073 073** to receive the latest traffic disruptions on your mobile.

Visit ptv.vic.gov.au for changes to bus stops. Residents and businesses affected by upcoming works will be contacted directly by our project team.

Mapping our progress

Please visit bigbuild.vic.gov.au/narrewarrencranbourne to access the interactive map that shows the design changes, and to see maps showing the permanent changes and recommended turns.

If you have queries about how this will impact you, please call us on **1800 105 105** and we will arrange a time to meet with you.

bigbuild.vic.gov.au/roads



For languages other than English please call 9209 0147

1800 105 105 (call anytime)

contact@bigbuild.vic.gov.au



Please contact us if you would like this information in an accessible format. If you need assistance due to a hearing or speech impairment, visit relayservice.gov.au