

## APPENDIX B: PARKVILLE PRECINCT ARCHITECTURAL PLANS AND ELEVATIONS

Ground Floor Level Plan	TAS-HWW-PKV-ZWD-DRG-ARC-PKV-A721000-DP
Ground Floor Street Level Plan (Signage)	TAS-CYP-PV-00-DRG-AGE-PKV-721101-DP
Ground Floor Level Plan (West)	TAS-HWW-PKV-ZWD-DRG-ARC-PKV-A722001-DP
Ground Floor Level Plan (East)	TAS-HWW-PKV-ZWD-DRG-ARC-PKV-A722002-DP
Lower Ground Level Plan	TAS-HWW-PKV-ZWD-DRG-ARC-PKV-A721010-DP
Concourse Level Plan	TAS-HWW-PKV-ZWD-DRG-ARC-PKV-A721020-DP
Lower Ground Level Plan (East)	TAS-HWW-PKV-ZWD-DRG-ARC-PKV-A722011-DP
Concourse Level Plan (West)	TAS-HWW-PKV-ZWD-DRG-ARC-PKV-A722021-DP
Concourse Level Plan (East)	TAS-HWW-PKV-ZWD-DRG-ARC-PKV-A722022-DP
East – West Long Section (Elevation) 1 & 2	TAS-HWW-PKV-ZWD-DRG-ARC-PKV-A724000-DP
East – West Long Section (Elevation) 1a	TAS-HWW-PKV-ZWD-DRG-ARC-PKV-A724001-DP
East – West Long Section (Elevation) 1b	TAS-HWW-PKV-ZWD-DRG-ARC-PKV-A724002-DP
East – West Long Section (Elevation) 2a	TAS-HWW-PKV-ZWD-DRG-ARC-PKV-A724011-DP
East – West Long Section (Elevation) 2b	TAS-HWW-PKV-ZWD-DRG-ARC-PKV-A724012-DP
North – South Cross Section (Elevation) 8	TAS-HWW-PKV-ZWD-DRG-ARC-PKV-A724024-DP
North – South Cross Section (Elevation) 9	TAS-HWW-PKV-ZWD-DRG-ARC-PKV-A724025-DP
North – South Cross Section (Elevation) 10	TAS-HWW-PKV-ZWD-DRG-ARC-PKV-A724026-DP
North – South Cross Section (Elevation) 11	TAS-HWW-PKV-ZWD-DRG-ARC-PKV-A724027-DP
North – South Cross Section (Elevation) 12	TAS-HWW-PKV-ZWD-DRG-ARC-PKV-A724028-DP
North – South Cross Section (Elevation) 13	TAS-HWW-PKV-ZWD-DRG-ARC-PKV-A724029-DP

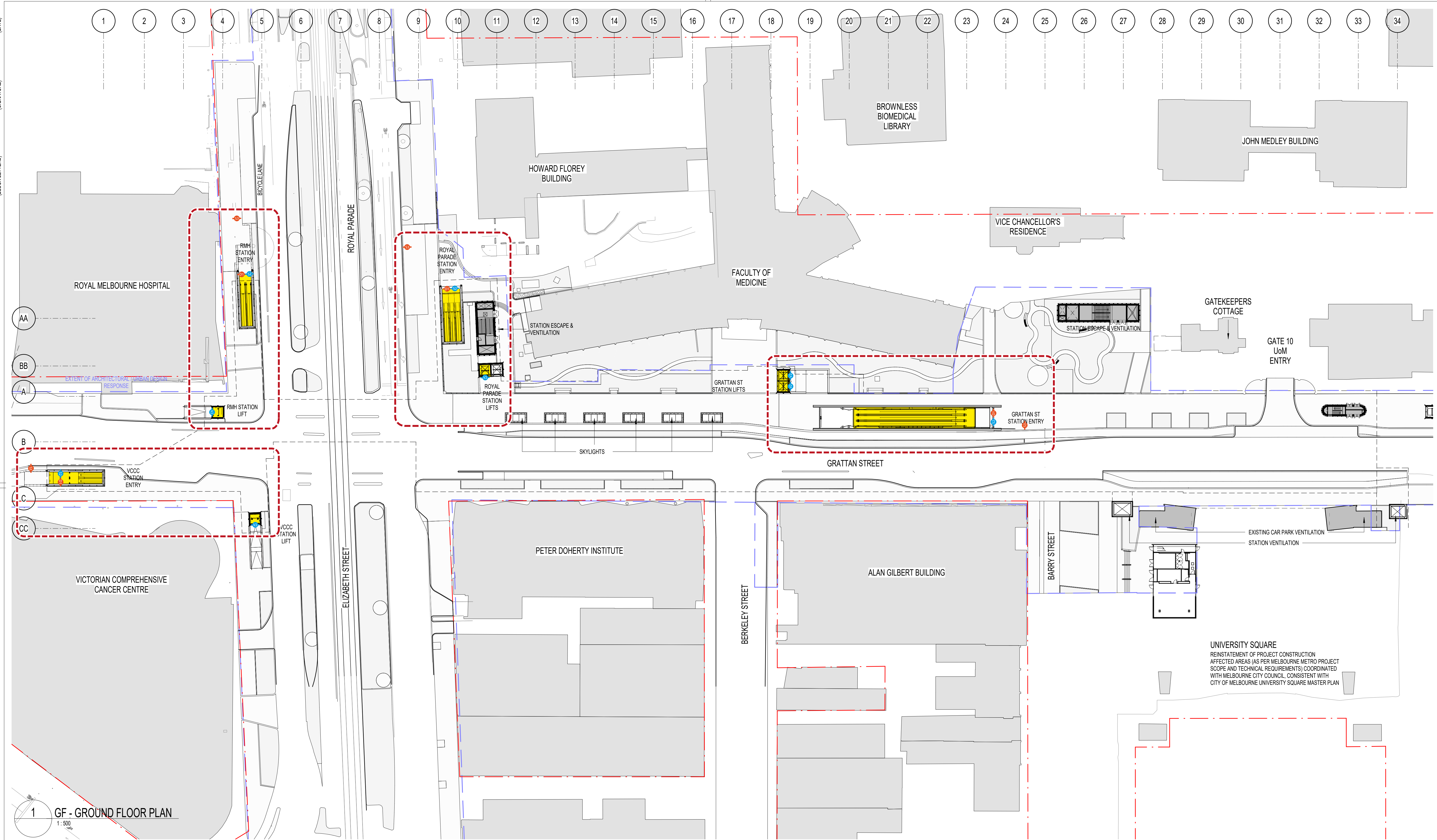


Materials Schedule

TAS-CYP-PV-00-SCH-ARC-PKV-000002-DP





[illegible]

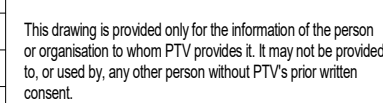








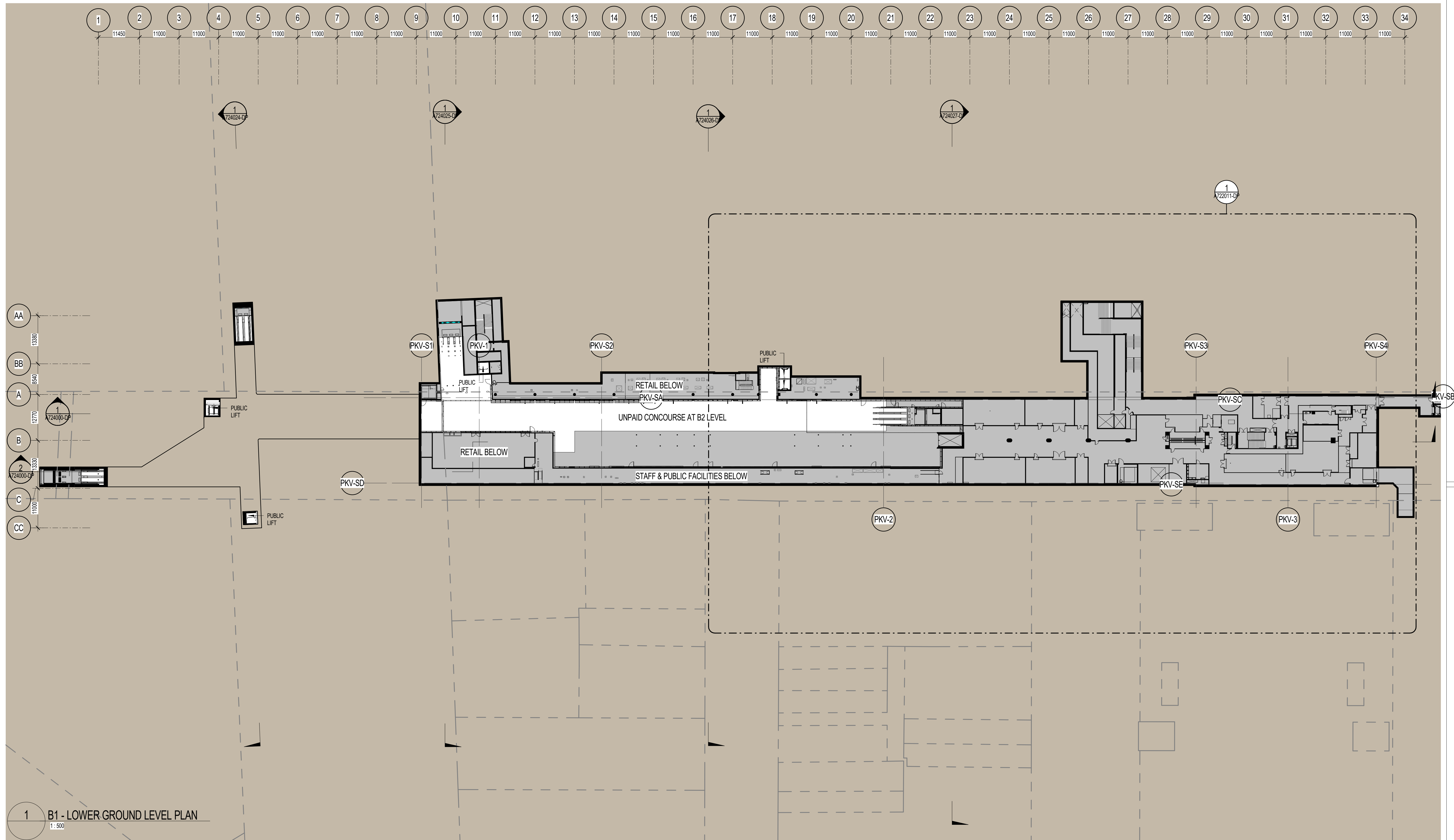
KEY PLAN
----------



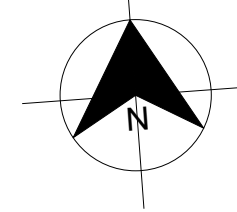
RAIL  
PROJECTS  
VICTORIA

Datum	
-------	--



KEY PLAN
----------



**RAIL  
PROJECTS  
VICTORIA**

Up Location	Down Location	Datum
East.	East.	
North.	North.	
ID#	ID#	

Scale 1 : 500		Sheet Size A1
------------------	--	------------------



SCALE BAR

0 10 20 40

1:500



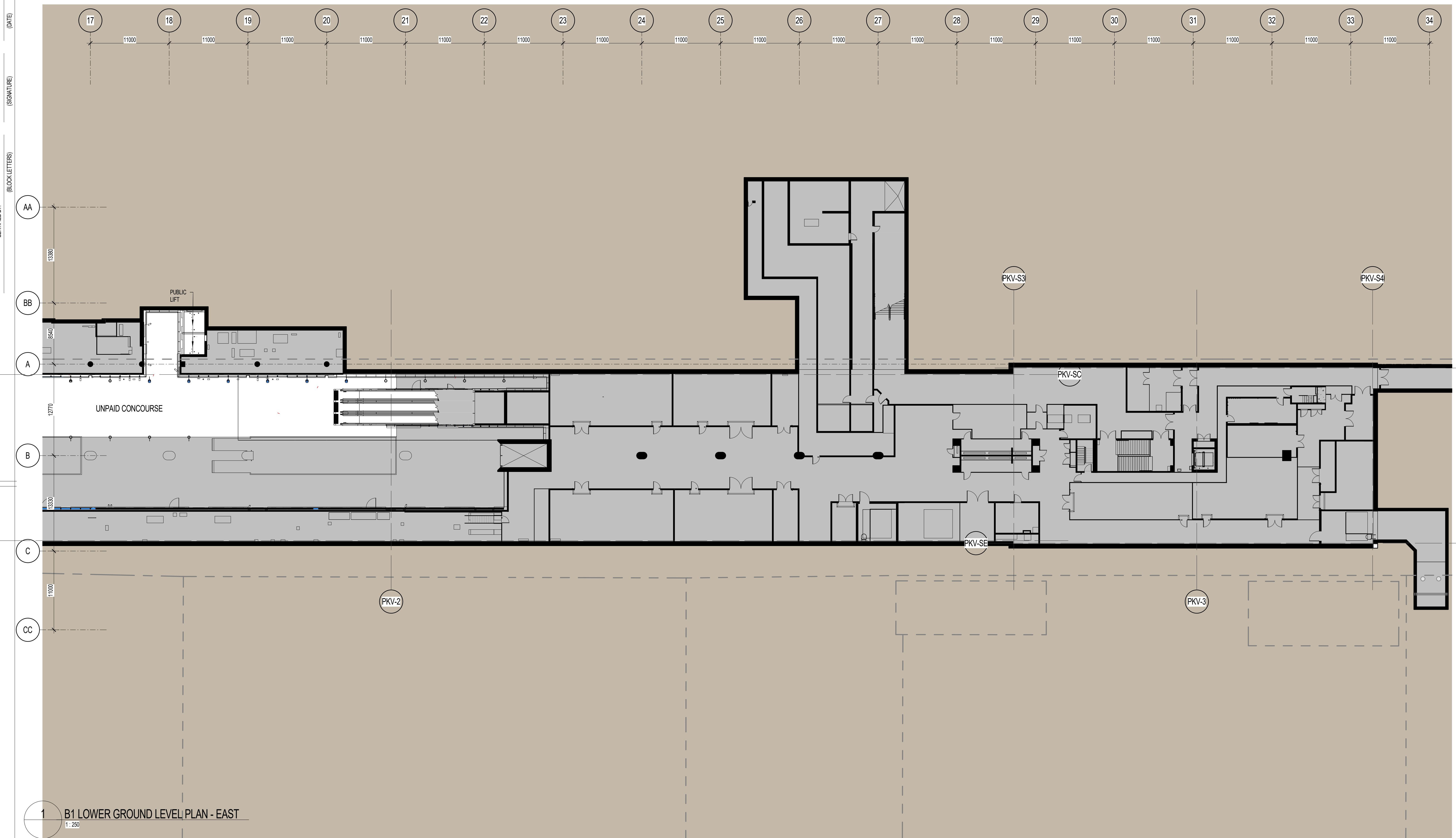
RAIL  
PROJECTS  
VICTORIA

Up Location	Down Location	Datum
East.	East.	
North.	North.	
ID#	ID#	

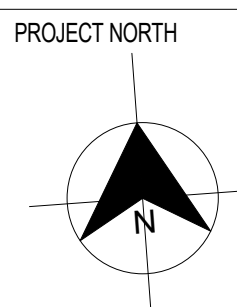
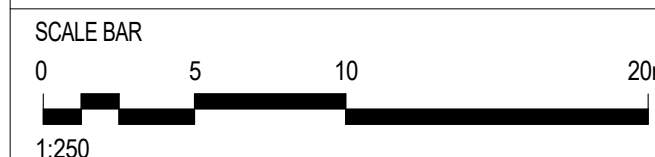
<b>PUBLIC TRANSPORT VICTORIA</b>		<b>PT</b>		Drawn By <b>J SMITH</b>	Designed By <b>C LAMBORN</b>
File Name		Checked By <b>P STEVENS</b>		Ind. Review	
Sheet No.		Approved Approver		Approval Date	
In Serv		Drawing Number			Revision
Scale 1 : 500	Sheet Size <b>A1</b>				

[illegible]





LEGEND



KEY PLAN
----------

	Consultant
--	------------



Cross  
Yarra  
Partnership

Franchisee / Lessee



**RAIL  
PROJECTS  
VICTORIA**

ARCHITECTURAL  
PARKVILLE  
LOWER GROUND LEVEL PLAN (EAST)

Up Location
East.
North.
ID#

Down Location
East.
North.
ID#

Datum	
-------	--

**CERTIFIED DESIGN  
RESUBMISSION**

Project Drawing Number

Revision

TAS-HWW-PKV-ZWD-DRG-ARC-PKV-A722011-DP



PUBLIC  
TRANSPORT  
VICTORIA **PT** 

File Name	
-----------	--

Sheet No.

--	--

In Serv

Scale 1 : 250

**PT>**

Drawn By

SMITH

Checked By

P STEVENS

Approved

Approver

Drawing Number

---

--	--

100


100

--	--

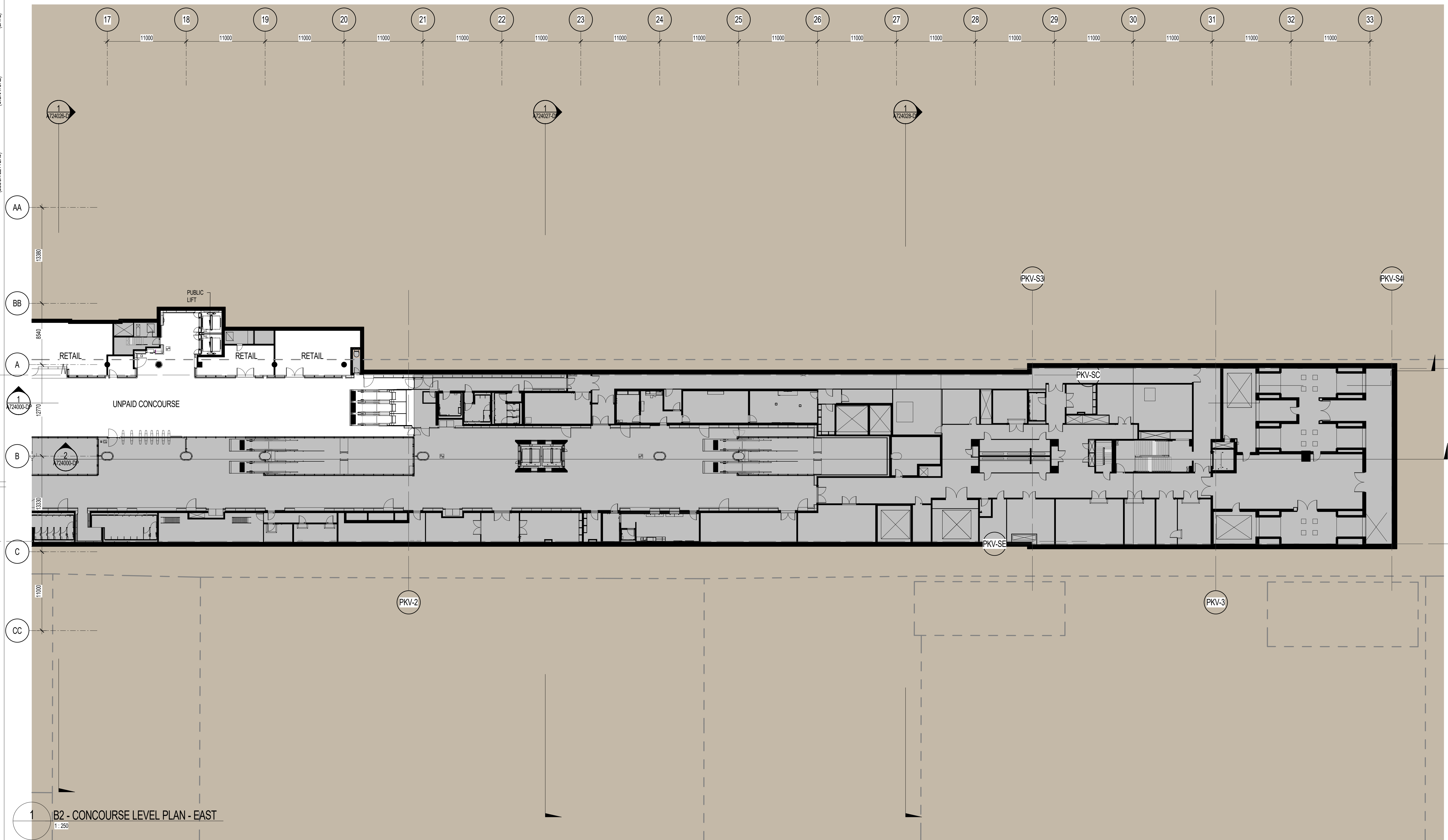
revision

100

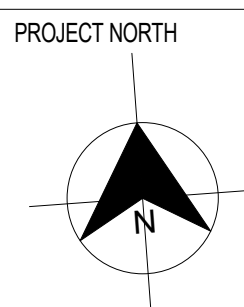
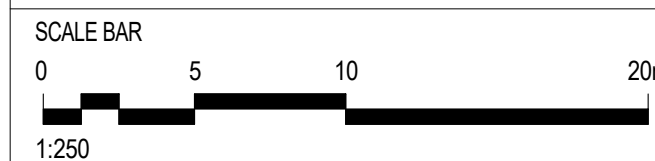
10







LEGEND



KEY PLAN
----------

Consultant
------------



Franchisee / Lessee



ARCHITECTURAL  
PARKVILLE  
CONCOURSE LEVEL PLAN (EAST)

Up Location
East.
North.
ID#

Down Location
East.
North.
ID#

Datum	
-------	--

Project Drawing Number

TAS-HWW-PKV-ZWD-DRG-ARC-PKV-A722022-DF



File Name
-----------

In Serv

Scale 1 : 250

Sheet Size	A
------------	---

Drawn By	J SMITH
Checked By	

Approved
----------

Drawing Number

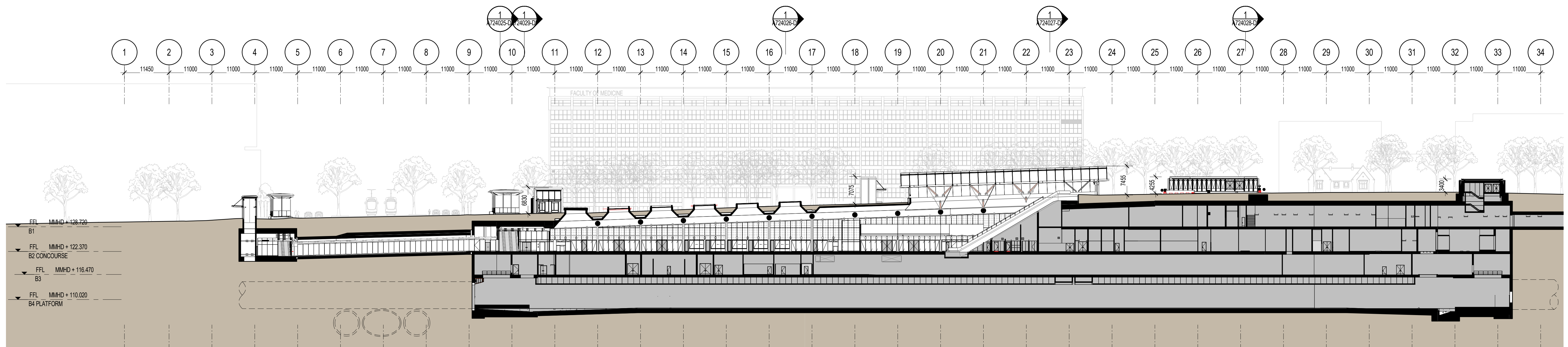
Designed By	C LAMBORN
Ind. Review	

Approval Date
---------------

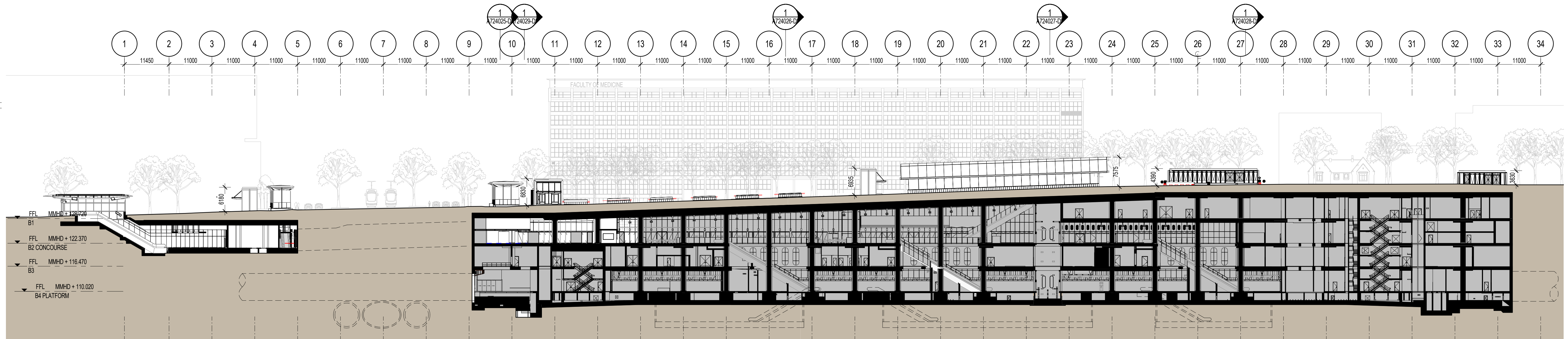
Revision

CERTIFIED DESIGN  
RESUBMISSION



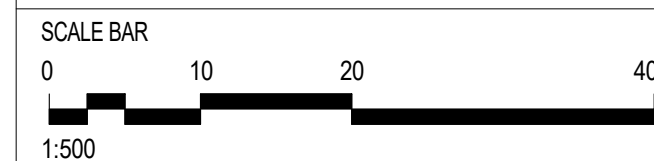


1 EAST-WEST LONG SECTION 1  
1 : 500



2 EAST-WEST LONG SECTION 2  
1 : 500

LEGEND



PROJECT NORTH

KEY PLAN
----------

	Consultant
--	------------



Franchisee / Lessee



# ARCHITECTURAL PARKVILLE WEST LONG SECTION (ELEVATION) 1 & 2

Up Location
East.
North.
ID#

Down Location
East.
North.
ID#

Datum	
-------	--

## DEVELOPMENT PLAN SUBMISSION

Project Drawing Number

Revision

TAS-HWW-PKV-ZWD-DRG-ARC-PKV-A724000-DP



Drawn By	Designed By
J SMITH	C LAMBORN

J SMITH	C LAMBORN
Checked By D OTER/ENG	Ind. Review

P STEVENS	
Approved	Approval Date

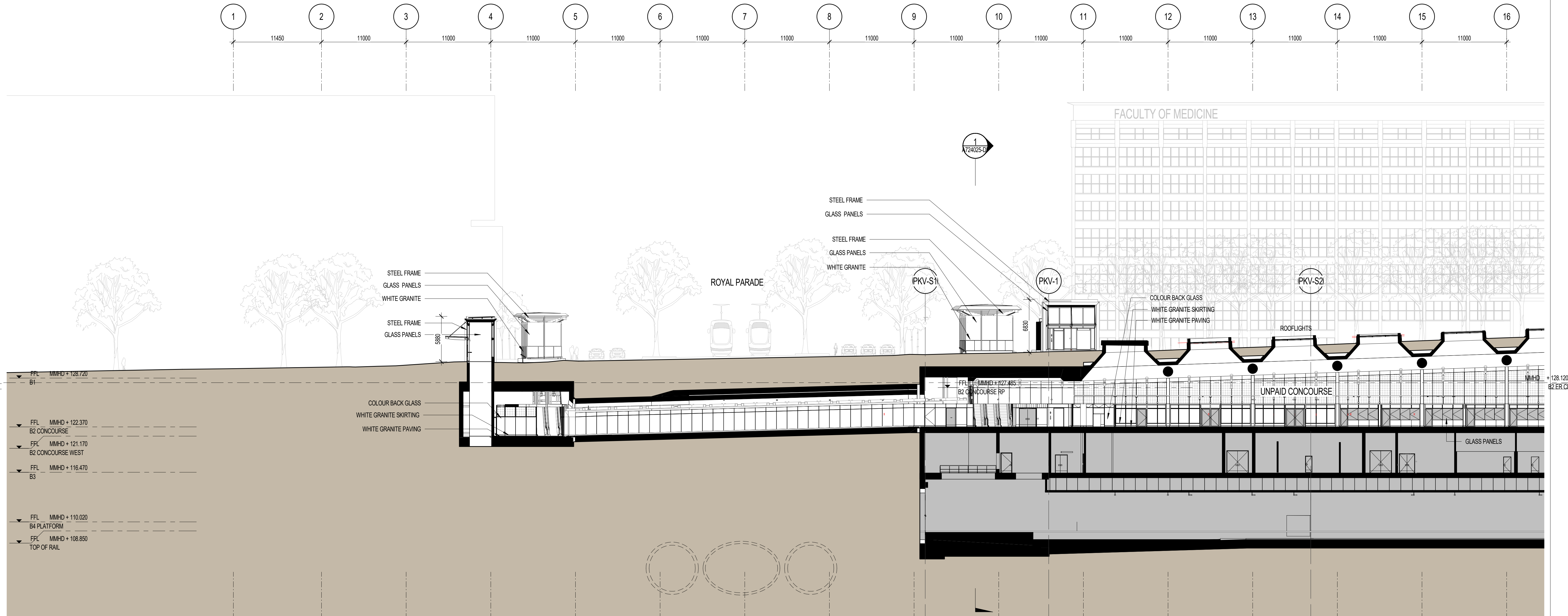
Approver	
Drawing Number	Revision

In Serv
Scale 1 : 500

Sheet Size	A1
------------	----

A1





SCALE BAR

0 10 20 40

1:500

KEY PLAN
----------



Cross  
Yarra  
Partnership



Lessee

**RAIL  
PROJECTS**  
VICTORIA

ARCHITECTURAL  
PARKVILLE  
WEST LONG SECTION (ELEVATION) 1A

Down Location
East.
North.
ID#

5

DRAFT CERTIFIED DESIGN FOR  
SILVER REVIEW

vision

TAS-HWW-PKV-ZWD-DRG-ARC-PKV-A724001-DP



File Name
Sheet No.

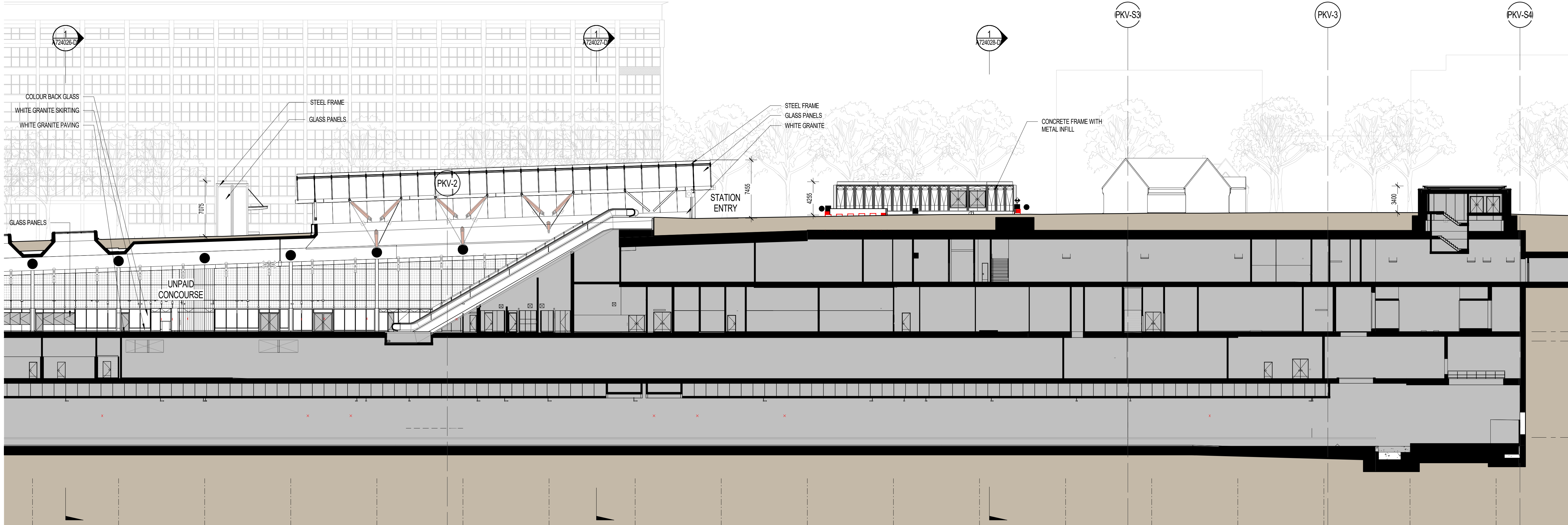
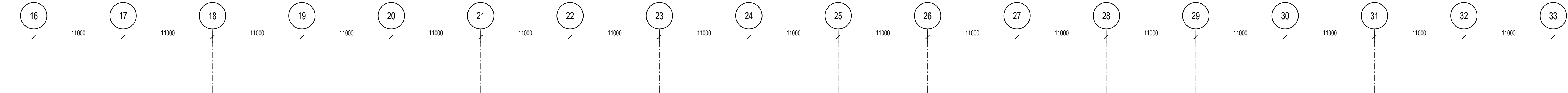
Drawn By SMITH	Designed By C LAMBORN
Checked By D STEVENS	Ind. Review

Approved	Approval Date
Approver	
Drawing Number	Revision

In Serv	
Scale 1 : 250	Sheet Size A1

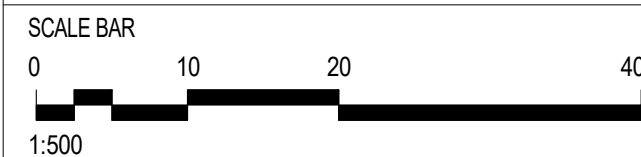
vision





1 EAST-WEST LONG SECTION 1 - EAST  
1:250

LEGEND



PROJECT NORTH

KEY PLAN

DRAFT CERTIFIED DESIGN FOR  
SILVER REVIEW

Project Drawing Number  
TAS-HWW-PKV-ZWD-DRG-ARC-PKV-A724002-DP

Drawn By J SMITH	Designed By C LAMBORN
Checked By P STEVENS	Ind. Review
Approved Approver	Approval Date
Drawing Number	Revision

Consultant  
 Cross Yarra Partnership

Franchisee / Lessee  


ARCHITECTURAL PARKVILLE EAST - WEST LONG SECTION (ELEVATION) 1B		
Up Location East. North. ID#	Down Location East. North. ID#	Datum

Revised By	In Serv	Rev.	Date	Description	Designed	Checked	Ind. Rev.	Approv.


This drawing has been prepared by, or compiled from, information provided by, persons other than PTV. To the maximum extent permitted by law, PTV disclaims any responsibility for, and makes no representations in relation to, the completeness, accuracy or quality of any information contained in this drawing. Each user of this drawing releases PTV from all and any loss, damage, cost, expense or liability in relation to the use of, or any reliance on, this drawing or the information contained in it.

All written dimensions take precedence over scaled dimensions.

This drawing is provided only for the information of the person or organisation to whom PTV provides it. It may not be provided to, or used by, any other person without PTV's prior written consent.



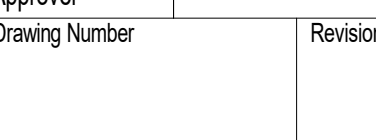


<b>PUBLIC TRANSPORT VICTORIA</b> 		Drawn By <b>J SMITH</b>	Designed By <b>C LAMBORN</b>
File Name		Checked By <b>P STEVENS</b>	Ind. Review
Sheet No.		Approved Approver	Approval Date
In Serv		Drawing Number	Revision
Scale 1: 250	Sheet Size <b>A1</b>		

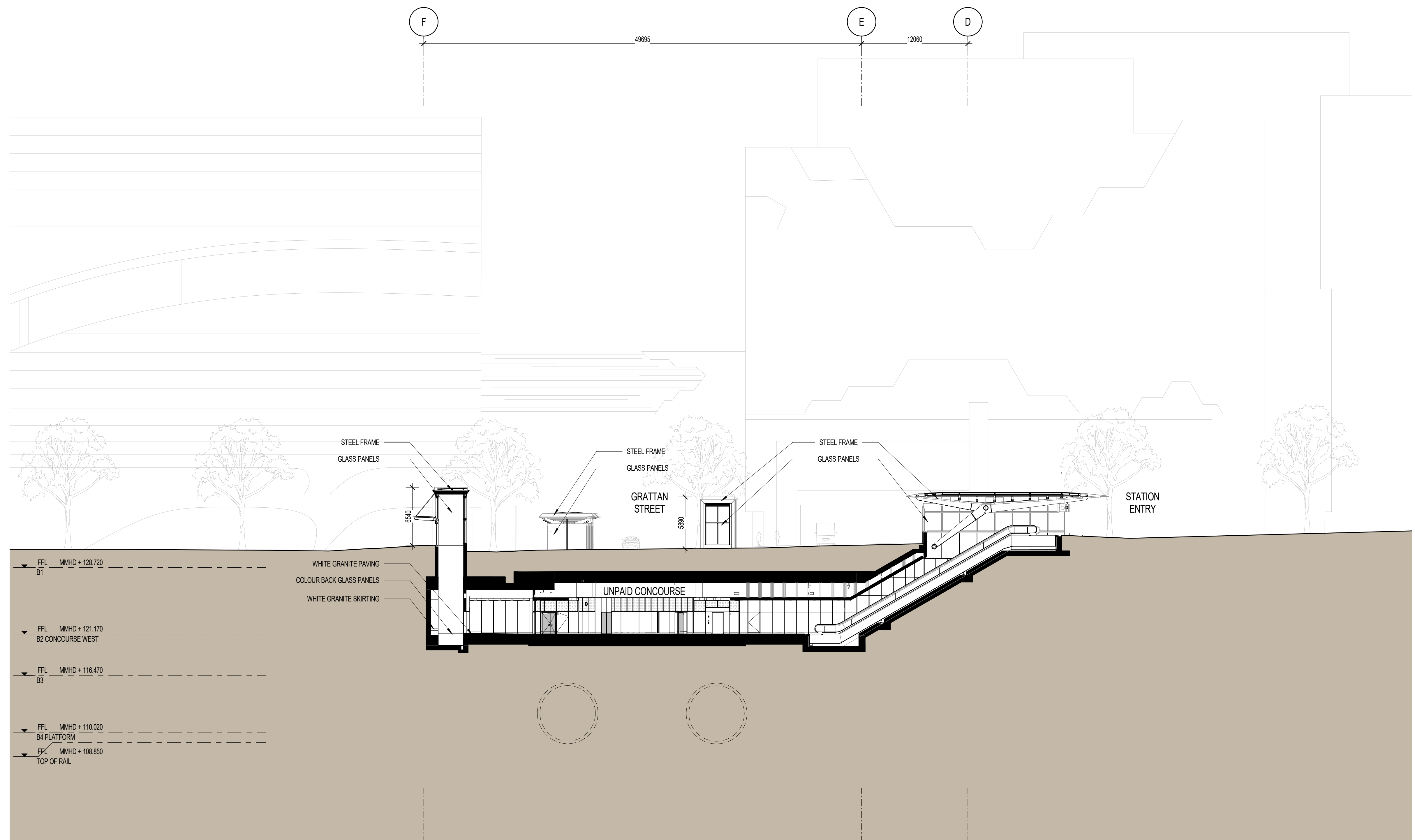




KEY PLAN
----------

[illegible]

This drawing is provided only for the information of the person or organisation to whom PTV provides it. It may not be provided to, or used by, any other person without PTV's prior written consent.



1 NORTH-SOUTH CROSS SECTION 8  
1:250


LEGEND

PROJECT NORTH

KEY PLAN
----------

DRAFT CERTIFIED DESIGN FOR  
SILVER REVIEW

Project Drawing Number	Revision
TAS-HWW-PKV-ZWD-DRG-ARC-PKV-A724024-DP	

<b>PUBLIC TRANSPORT VICTORIA</b> 		Drawn By <b>J SMITH</b>	Designed By <b>C LAMBORN</b>
File Name		Checked By <b>P STEVENS</b>	Ind. Review
Sheet No.		Approved <b>Approver</b>	Approval Date
In Serv		Drawing Number	Revision
Scale 1 : 250	Sheet Size <b>A1</b>		

This drawing has been prepared by, or compiled from information provided by, persons other than PTV. To the maximum extent permissible by law, PTV takes no responsibility for, and makes no representations in relation to, the completeness, accuracy or quality of any information contained in this drawing. Each user of this drawing releases PTV from all and any loss, damage, cost, expense or liability in relation to the use of, or any reliance on, this drawing or the information contained in it.

This drawing is provided only for the information of the person or organisation to whom PTV provides it. It may not be provided to, or used by, any other person without PTV's prior written consent.

	Consultant
--	------------

Franchisee / Lessee



Cross  
Yarra  
Partnership



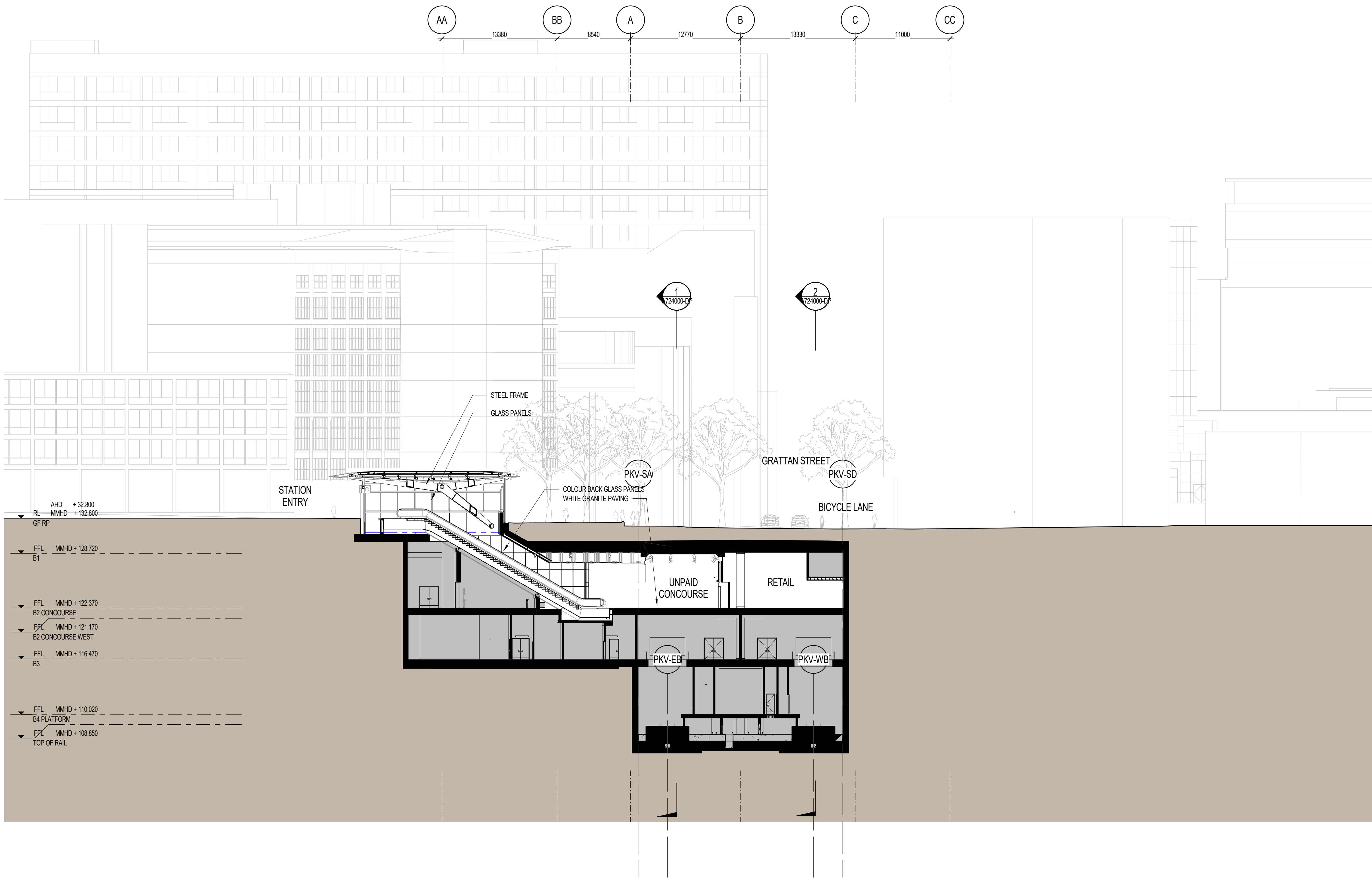
RAIL  
PROJECTS  
VICTORIA

## ARCHITECTURAL PARKVILLE - SOUTH CROSS SECTION (ELEVATION)

Up Location	Down Location	Datum
East.	East.	
North.	North.	
ID#	ID#	

[illegible]

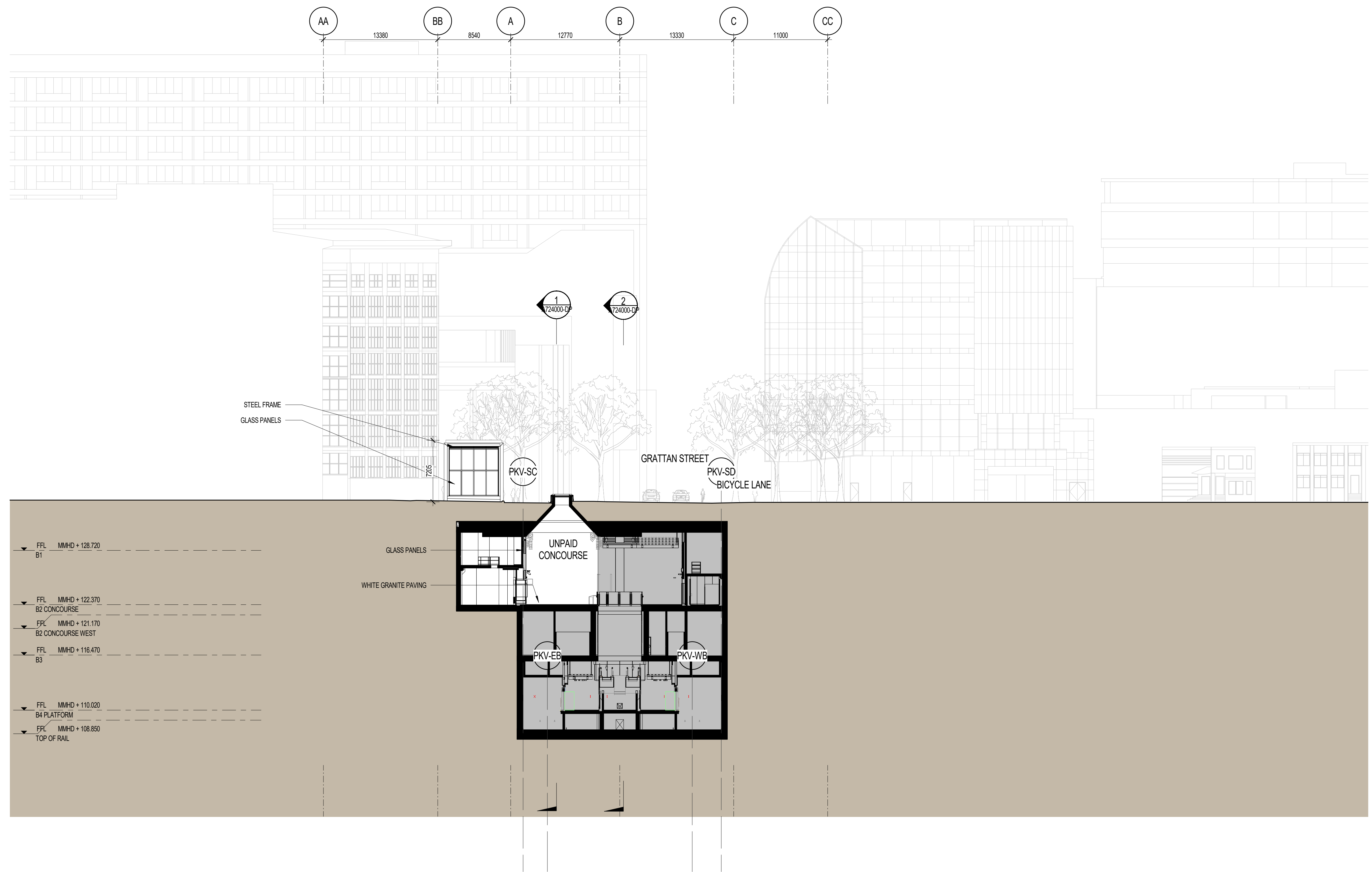




1 NORTH-SOUTH CROSS SECTION 9  
1:250

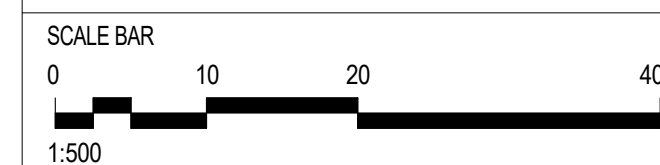
LEGEND

				SCALE BAR 0 10 20 40m 1:500				PROJECT NORTH		KEY PLAN		DRAFT CERTIFIED DESIGN FOR SILVER REVIEW			
												Project Drawing Number TAS-HWW-PKV-ZWD-DRG-ARC-PKV-A724025-DP			
												ARCHITECTURAL PARKVILLE NORTH - SOUTH CROSS SECTION (ELEVATION) 9			
												PUBLIC TRANSPORT VICTORIA PT			
												File Name			
												Sheet No.			
												In Serv			
												Scale 1:250 Sheet Size A1			
												Up Location East, North, ID#			
												Down Location East, North, ID#			
												Datum			
												Drawing Number			
												Revision			
												Revised By In Serv Rev Date Description			
												Designed Checked Ind. Rev. Approv.			
												This drawing has been prepared by, or compiled from, information provided by, persons other than PTV. To the maximum extent permitted by law, PTV disclaims any responsibility for, and makes no representations in relation to, the completeness, accuracy or quality of any information contained in this drawing. Each user of this drawing releases PTV from all and any loss, damage, cost, expense or liability in relation to the use of, or any reliance on, this drawing or the information contained in it.			
												All written dimensions take precedence over scaled dimensions.			
												This drawing is provided only for the information of the person or organisation to whom PTV provides it. It may not be provided to, or used by, any other person without PTV's prior written consent.			
												Consultant Cross Yarra Partnership			
												Franchisee / Lessee RAIL PROJECTS VICTORIA			



1 NORTH-SOUTH CROSS SECTION 10  
1:250

LEGEND




PROJECT NORTH

	KEY PLAN
--	----------

DRAFT CERTIFIED DESIGN FOR  
SILVER REVIEW

Project Drawing Number	Revision
TAS-HWW-PKV-ZWD-DRG-ARC-PKV-A724026-DP	

		Drawn By <b>C J SMITH</b>	Designed By <b>C LAMBORN</b>
File Name		Checked By <b>P STEVENS</b>	Ind. Review
Sheet No.		Approved Approver	Approval Date
In Serv		Drawing Number	Revision
Scale 1 : 250	Sheet Size <b>A1</b>		

	Consultant
--	------------



Cross  
Yarra  
Partnership

Franchisee / Lessee



ee / Lessee

# ARCHITECTURAL

## PARKVILLE

### NORTH - SOUTH CROSS SECTION (ELEVATION)

Up Location	Down Location	Datum
East.	East.	
North.	North.	
ID#	ID#	

Drawn By SMITH	Designed By C LAMBORN
Checked By P STEVENS	Ind. Review

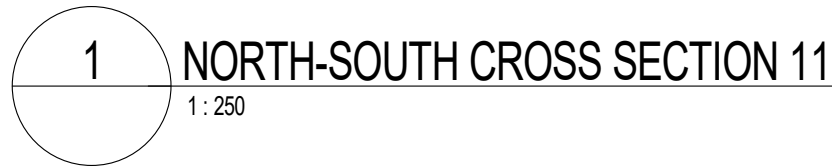
Approved Approver	Approval Date
Drawing Number	Revision

This drawing has been prepared by, or compiled from information provided by, persons other than PTV. To the maximum extent permissible by law, PTV takes no responsibility for, and makes no representations in relation to, the completeness, accuracy or quality of any information contained in this drawing. Each user of this drawing releases PTV from all and any loss, damage, cost, expense or liability in relation to the use of, or any reliance on, this drawing or the information contained in it.

This drawing is provided only for the information of the person or organisation to whom PTV provides it. It may not be provided to, or used by, any other person without PTV's prior written consent.

[illegible]






KEY PLAN

DRAFT CERTIFIED DESIGN FOR  
SILVER REVIEW

Project Drawing Number	Revision
TAS-HWW-PKV-ZWD-DRG-ARC-PKV-A724027-DP	

<b>PUBLIC TRANSPORT VICTORIA</b>		<b>PT</b> 		Drawn By <b>J SMITH</b>	Designed By <b>C LAMBERT</b>
File Name		Checked By <b>P STEVENS</b>		Ind. Review	
Sheet No.		Approved <b>Approver</b>		Approval Date	
In Serv		Drawing Number			Revision
Scale 1 : 250	Sheet Size <b>A1</b>				

This drawing has been prepared by, or compiled from information provided by, persons other than PTV. To the maximum extent permissible by law, PTV takes no responsibility for, and makes no representations in relation to, the completeness, accuracy or quality of any information contained in this drawing. Each user of this drawing releases PTV from all and any loss, damage, cost, expense or liability in relation to the use of, or any reliance on, this drawing or the information contained in it.

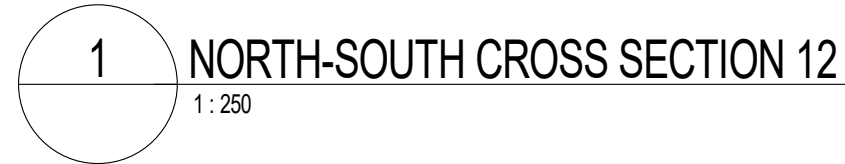
All written dimensions take precedence over scaled dimensions.

This drawing is provided only for the information of the person or organisation to whom PTV provides it. It may not be provided to, or used by, any other person without PTV's prior written consent.

Consultant	 Cross Yarra Partnership
Franchisee / Lessee	 RAIL PROJECTS VICTORIA

ARCHITECTURAL		
PARKVILLE		
NORTH - SOUTH CROSS SECTION (ELEVATION		
11		
Up Location	Down Location	Datum
East.	East.	
North.	North.	
ID#	ID#	

[illegible]



SCALE BAR

0 10 20 40

1:500

KEY PLAN
----------




Cross  
Yarra  
Partnership

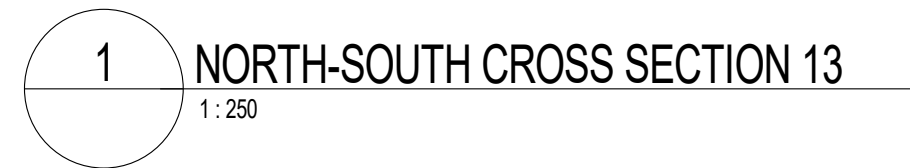


**RAIL  
PROJECTS  
VICTORIA**

Up Location	Down Location	Date
East.	East.	
North.	North.	
ID#	ID#	

<b>PUBLIC TRANSPORT VICTORIA</b> 		Drawn By <b>J SMITH</b>	Designed By <b>C LAMBORN</b>
File Name		Checked By <b>P STEVENS</b>	Ind. Review
Sheet No.		Approved Approver	Approval Date
In Serv		Drawing Number	Revision
Scale 1" = 250'	Sheet Size <b>A1</b>		





Drawn By	Designed By
EGAN	C LAMBORN
Checked By	Ind. Review

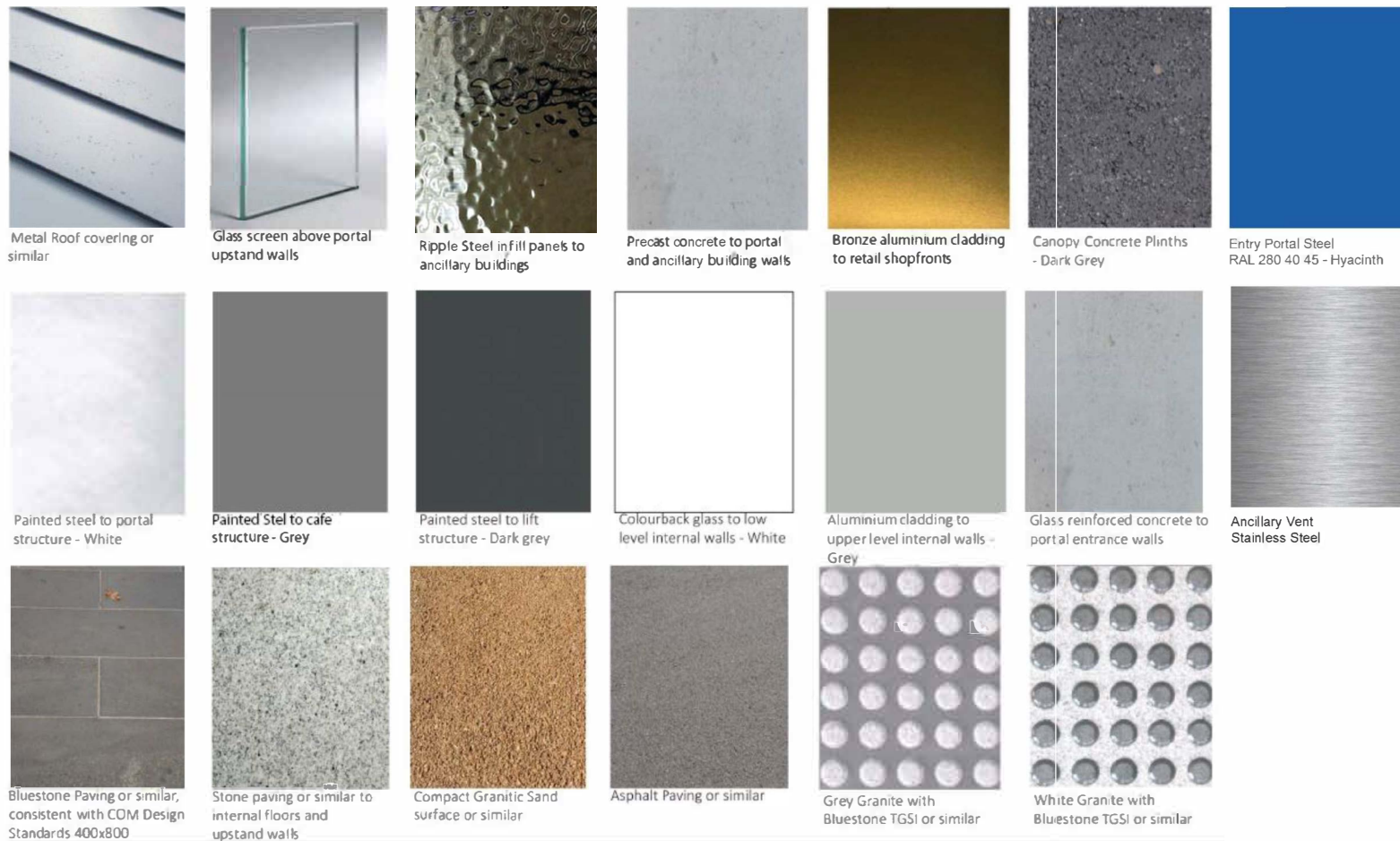


Figure 12: Indicative material and finishes palette for Parkville Station