

What to expect during construction

We're getting ready to start works to remove the level crossings at Old Calder Highway and Watsons Road, Diggers Rest.

To remove the level crossings, we're building new road bridges at Old Calder Highway and Watsons Road. Engineering assessments have determined road bridge designs are the best option to remove these level crossings.

Site investigations for the project have been ongoing since late 2022. In mid 2024, we'll begin early works to prepare the area for construction.

From mid to late 2024, major construction will be underway. In 2025, the new road bridges will open and the level crossings will be gone for good.

These level crossing removals will make the Sunbury Line level crossing free, improving safety, travel times and allowing more trains to run more often.

We'll work in and around the Diggers Rest Station precinct and Watsons Road area to prepare the area for construction and make way for the new road bridges.

During construction, we will drill holes in the ground to form the foundations of the new road bridges, build retaining walls and create the bridge structures.

The project team is committed to reducing and minimising noise, dust, light and vibration impacts during construction. We'll also keep you up to date with upcoming disruptions and impacts due to our works.

Construction worker on a Level Crossing Removal Project site



Construction stages

Construction for major transport infrastructure projects like level crossing removals is carried out in a staged approach. This year, you can expect to see the following stages of construction for the Diggers Rest removals.

Site investigations

Up to mid 2024

Site investigation works are usually low impact activities that are carried out during the planning phase of a project. Information collected from site investigations helps inform the bridge designs, construction methodology and other plans for the project. Site investigation activities for the Diggers Rest removals include:

- Surveys of the land, underground services, roads, existing buildings, property boundaries and more
- Geotechnical investigations
- Soil and water testing
- Cultural heritage assessments
- Environmental and ecological assessments.

Early works

Mid 2024

Early works are usually low to moderate impact activities that prepare the area for major construction. As part of early works for the project, we'll carry out the following activities from the end of autumn and into winter:

- Setting up site offices and work areas at both level crossings
- Building temporary access roads for residents and our workforce
- Create storage areas for construction materials and equipment, known as a 'laydown' area
- Installing roadwork signage and safety barriers along the road reserve
- Installing fencing, barricading and implementing environmental controls around the work areas
- Relocating and protecting essential utilities and services, such as water pipes, sewers, electrical cables, telecommunication services and some overhead wiring in the rail corridor
- Removing some trees and vegetation in the project area
- Constructing new temporary car parks and pedestrian connections for our workforce at both sites and commuters at Diggers Rest Station.

Major construction

Mid to late 2024 and throughout 2025

We'll start our major construction period in winter. This stage of the project is when our highest impact works are carried out. During major construction, we'll build the new road bridges and remove the level crossings. At the end of the major construction period, the boom gates will be gone for good. Some of the many major construction activities that you'll see:

- Works around the existing Diggers Rest Station building and Watsons Road level crossing
- Earthworks and ground excavations
- Piling to create the bridge foundations
- Works to build retaining walls for the new road bridges
- Lifting of concrete beams to form the bridge
- Construction activities in the rail corridor
- Works to connect the new bridges with existing roads and Diggers Rest Station carpark
- Creation of new community spaces and pedestrian and cyclist connections at Old Calder Highway.

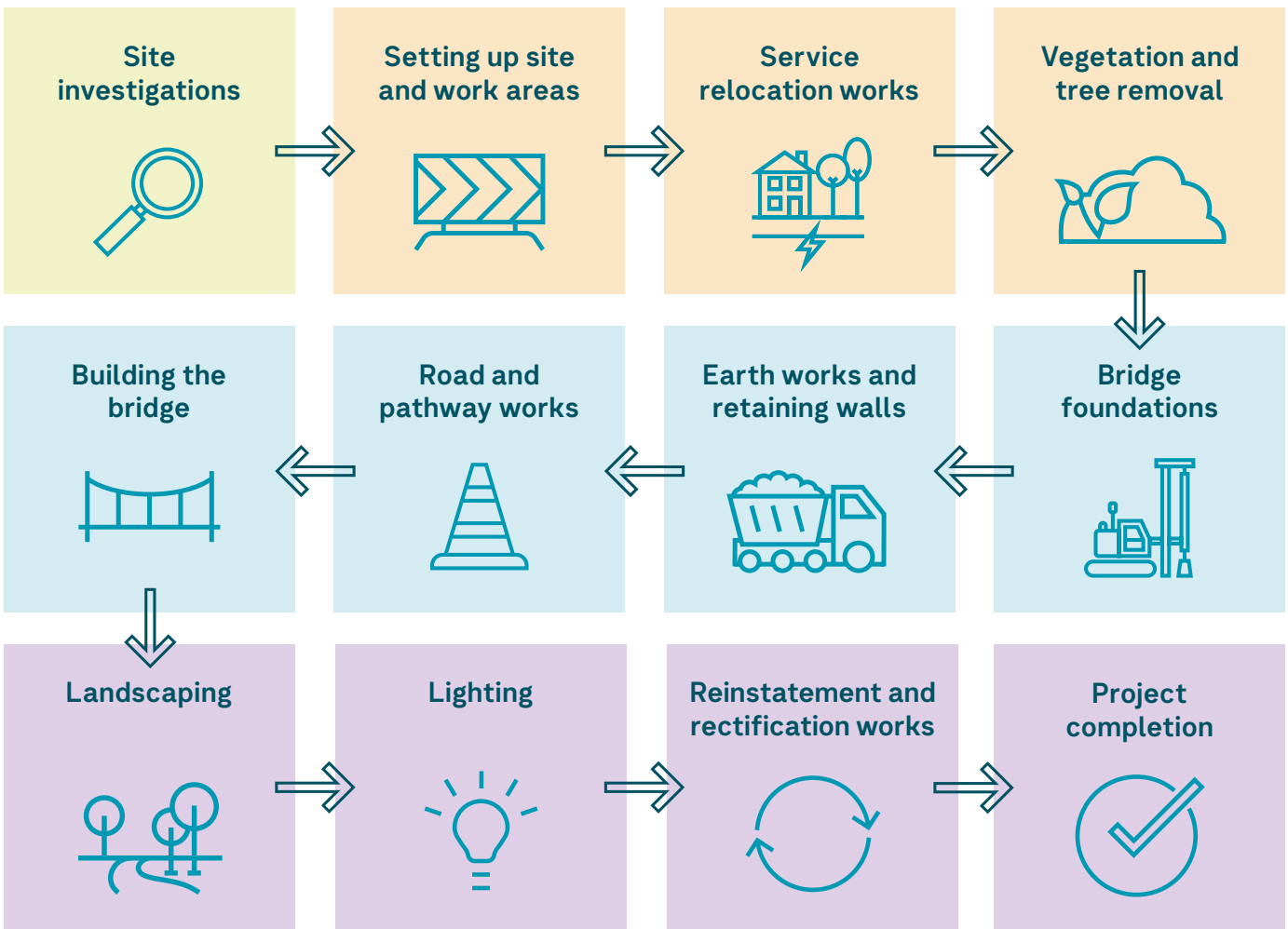


Looking south from the new community space to the west of Diggers Rest Station. Artist impression only, subject to change.



A piling rig drilling a hole in to the ground on a construction site.

Construction stages overview



Finishing works

2025

When major construction wraps up, we'll put the finishing touches on the new road bridges and surrounding areas. This includes finishing up the landscaping, installing lighting and CCTV, installing architectural elements, reinstating areas we may have had to change or occupy to build the bridges, and finalising pathways and connections.

- Site investigations
- Early works
- Major construction
- Finishing works

Communication through construction

We'll keep the Diggers Rest community up to date during construction. This includes nearby residents, businesses, road users, Diggers Rest Station users, local community groups and other important stakeholders.

We use a range of channels to keep you up to date, including:


- letters to residents and businesses
- email and SMS updates to subscribers
- doorknocks and phone calls
- community information sessions
- pop ups at Diggers Rest Station
- local newspaper advertisements
- social media
- posters and information at Diggers Rest Station and other community hubs
- 24/7 contact centre.

Looking south from the new community space to the east of Diggers Rest Station. Artist impression only, subject to change.



Stay up to date

We'll send project news, information about upcoming works and reminders about disruptions directly to your email and phone.

 **Email updates**

levelcrossings.vic.gov.au/subscribe

 **SMS alerts**

Text **DIGGERS** to **0427 840 967**

Aerial view looking north at the new road bridge at Old Calder Highway and Diggers Rest Station. Artist impression only, subject to change.



Trees, vegetation, the environment and landscaping

The Diggers Rest Level Crossing Removal project are committed to minimising impacts on existing trees, vegetation and the surrounding environment.

We make every effort to keep as many trees as possible, however, some tree and vegetation removal is necessary to safely remove the level crossings and build the new road bridges. To offset tree and vegetation removal, we'll plant new trees and shrubs in the area as part of the new community spaces and landscaping.

To learn more about the new landscaping we'll plant and how we'll manage our environmental impacts for the project, scan the QR code or head to levelcrossings.vic.gov.au/diggers-rest/factsheets



Aerial view looking south towards the new road bridge at Watsons Road, Diggers Rest. Artist impression only, subject to change.



Managing noise, dust, light and vibration

Construction impacts

Our major works can cause noise, vibration and create dust and dirt. Below are the ways in which our environmental team work to mitigate these effects.

Noise

We've completed noise assessments at different locations in the project areas around the Old Calder Highway and Watsons Road level crossings to understand the current background noise levels.

During our works, the project team monitors noise and vibration levels to make sure they are within the Environment Protection Authority (EPA) noise control guidelines.

Vibration

We model vibration levels during construction and offer property condition reports for any buildings close to high impact works. This helps us understand the existing condition of properties before we start.

How we minimise noise and vibration impacts

- Works are scheduled during the daytime as much as possible, generally from 7am to 6pm between Monday to Friday and 7am to 1pm on Saturdays. However, there will be times where we will need to work on Sundays, overnight and 24/7 in the project area and rail corridor when trains aren't running.
- We try to maintain a buffer zone between work areas and homes
- We use temporary noise mounds, barriers and enclosures during noisy works
- We use quieter reversing alarms on our vehicles and machines
- We keep our machinery in good working order and meet required noise standards

How we monitor dust

We'll install dust monitors around the work sites to measure air quality and weather conditions at regular intervals. This will help us to ensure we have adequate dust controls in place.

How we minimise dust and dirt

- We use water trucks to regularly wet down our sites
- We stage works to minimise disturbed soil being exposed to wind where possible
- We reduce the speed of construction vehicles
- Steel grids are used at site exit points to reduce mud being dragged onto roads
- We clean the roads around our sites with street-sweepers

How we minimise temporary light spill

There will be times throughout the construction period when temporary lighting is needed to keep our workers safe. We'll keep the amount of light to the minimum necessary for safe access or construction. Light towers will be directed away from homes, businesses, and public buildings.

Supporting residents



Sometimes it is not possible to avoid disturbing residents and we need to consider other options. This can include temporary respite and relocation, which is offered to eligible residents before impactful works begin, and where suitable, by requests during works.

If you have any issues with noise, vibration, dust or light during construction, or any other concerns or questions, call us on **1800 105 105** or email contact@levelcrossings.vic.gov.au

levelcrossings.vic.gov.au

contact@levelcrossings.vic.gov.au



For languages other than English, please call 9209 0147.

1800 105 105 (call anytime)

Please contact us if you would like this information in an accessible format. If you need assistance due to a hearing or speech impairment, visit relayservice.gov.au

