



EPPING ROAD UPGRADE

WINTER 2025



Driving progress in Wollert by year's end

We've finished building the new southbound lanes on Epping Road and High Street, stretching from Craigieburn Road East to Memorial Avenue.

At De Rossi Boulevard, we've upgraded the road, added new turning lanes, and built a centre median to improve safety and traffic flow.

You'll also notice new on-street parking, dedicated bike lanes, shared walking and cycling paths, and modern street lighting to enhance safety and accessibility.

We're continuing to build the new northbound lanes and upgrading intersections on the west side of Epping Road and High Street.

Linfield Parade recently reopened with a temporary setup that allows left turns in and out onto Epping Road. At Harvest Home Road, our work continues to upgrade the intersection.

These milestones pave the way for the progressive opening of Epping Road, with major construction set to finish by the end of 2025.

Above image: Epping Road and De Rossi Boulevard/Pine Park Drive.

Project timeline



Early 2023

- Major works start
- Utility works and building the new southbound lanes



2024

- Build new southbound lanes
- Intersection works



2025

- Finish building southbound lanes
- Build northbound lanes
- Continue intersection works
- Major works complete.



Sign up for updates
Subscribe for email and SMS updates
at bigbuild.vic.gov.au/roads-subscribe



A CLOSER LOOK AT THE CHANGES

De Rossi Boulevard at Epping Road – looking south



Epping Road – looking north



Building a better Epping Road

To build the new southbound lanes of Epping Road, we've:



Dug out 88,000 tonnes of soil



Placed around 130,000 tonnes of materials to build the road base



Laid more than 30,000 tonnes of asphalt



Installed more than 3,000 metres of safety barriers



Laid more than 1,300 cubic metres of concrete (including kerb, walking and cycling paths, bus stops and driveways) – that's equivalent to around 40 shipping containers

WHAT'S COMING UP

We're on track to finish major construction on the Epping Road Upgrade by the end of 2025. Once it's done, it will be safer and smoother for drivers, cyclists, and pedestrians to get around.

Lyndarum Drive intersection upgrade

From early August, we'll close Lyndarum Drive at Epping Road for around two months to safely upgrade the intersection. The Epping Road Service Road at Lyndarum Drive will also be closed during this time.

Access to Lyndarum Drive and Epping North Shopping Centre will be available via:

- **Northbound:** Taggerty Grove and Linfield Parade
- **Southbound:** Craigieburn Road East, De Rossi Boulevard or O'Herns Road.

There is still plenty of parking available to access the Epping North shopping precinct which can be accessed via Northfields, Mansfield, and Kyabram streets as well as along Lyndarum Drive.

Delivering the final design of Epping Road – step by step

We're adding extra lanes at the Harvest Home Road intersection to help improve traffic flow. Once that upgrade is done, we'll start opening Epping Road to its final layout. During this time, one lane

will remain open in each direction along Epping Road between Craigieburn Road East and Harvest Home Road, to allow safe construction of the centre median and other finishing works.

As we progress works on the west side of Epping Road and High Street, between Harvest Home Road and Memorial Avenue, we'll gradually open the road to its full capacity.

The final stage of major works involves laying the wearing course – the top layer of asphalt. This smooth, durable surface enhances safety and comfort for drivers while protecting the underlying pavement, ensuring a longer-lasting road with reduced maintenance needs.

Working hours

Most of our works take place **between 7am and 6pm, Monday to Friday**, and on **Saturdays between 7am and 5pm**. Some works may need to occur at night to minimise impacts on traffic or utility services. If we need to work at night, we'll let you know ahead of time.

Please observe on-road signage and the directions of our traffic controllers, so we can keep you and our workers safe.

Stay informed

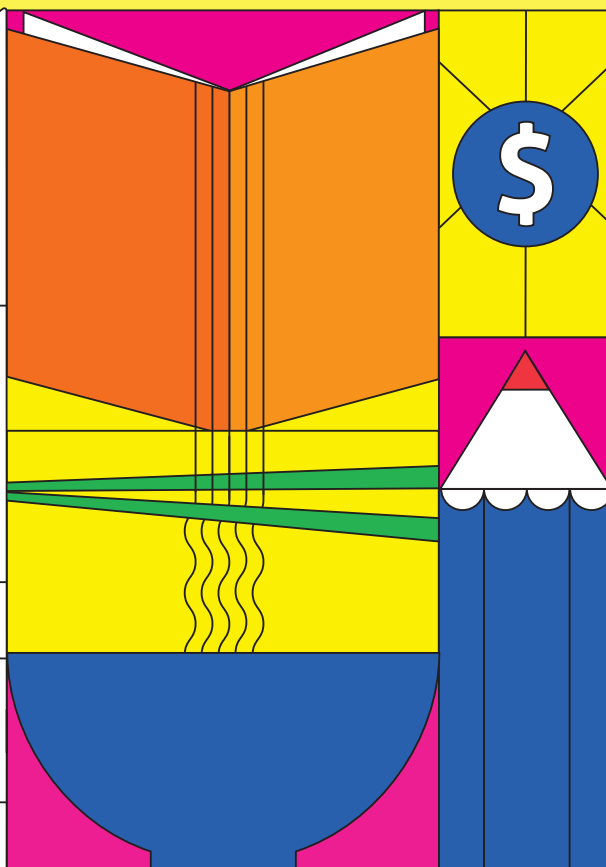
For more information, please visit our project website at bigbuild.vic.gov.au/epping.

Sign up at bigbuild.vic.gov.au/roads-subscribe to receive email and SMS updates direct to your phone.



SHOP TO THE TOP

23
AUG
TO
END
OCT



Shop at Epping North shopping precinct and help your local school or kinder to win a share of \$16,000!



How it works



Shop at participating stores, collect your receipts.



Scan the QR code here or in store.



Upload your receipt, enter the amount and nominate your school. You can also drop your receipt in the entry box in Epping North Shopping Centre. Make sure your school's name is written on the back.

Terms and conditions apply, visit bigbuild.vic.gov.au/projects/roads/terms

bigbuild.vic.gov.au/roads



For languages other than
English please call 9209 0147

1800 105 105 (call anytime)

contact@bigbuild.vic.gov.au



Please contact us if you would like this information in an accessible format. If you need assistance due to a hearing or speech impairment, visit relayservice.gov.au