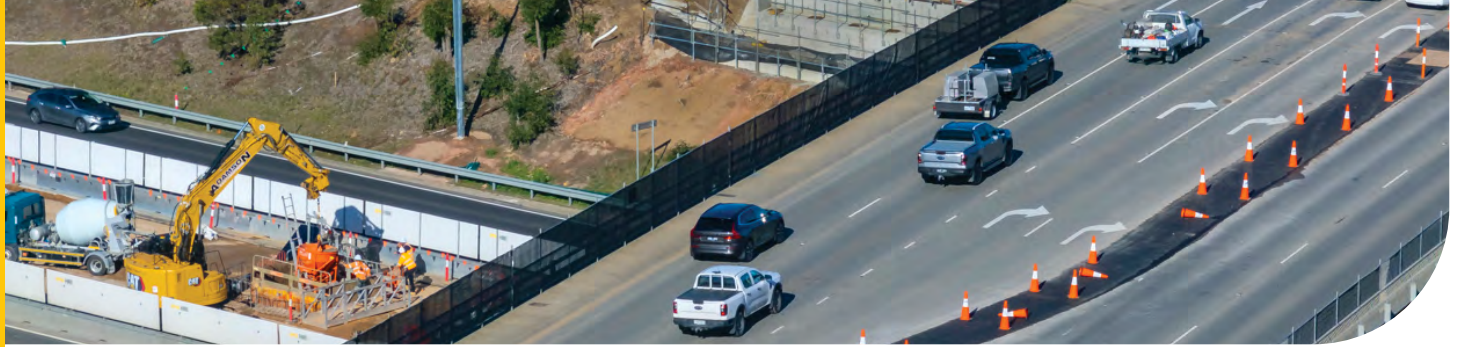


POWERING THROUGH



CLYDE ROAD UPGRADE

AUGUST 2025



We're upgrading Clyde Road in Berwick, relieving bottlenecks, improving traffic flow, and making your journey easier, safer, and more reliable.

Temperatures may be dropping, but works are heating up on the Clyde Road Upgrade!

We're making it faster and easier to exit the Princes Freeway citybound onto Clyde Road by building an additional right-turn lane and extending the existing left turn slip lane. This will allow more vehicles to turn left or right at each green light.

To achieve this, we closed the ramp in June to begin major earth, asphalt and drainage works.

Since then, we've removed around **630 tonnes** of existing asphalt, equivalent to **126 adult elephants**, and more than **2,200 cubic metres** of road base material.

As part of our ongoing commitment to reducing waste, this material will be reused in other areas across the project.

We've also installed close to **150 metres** of new drainage, and we'll soon begin building a new **180-metre-long** retaining wall along the southern edge of the ramp. Once complete, it will act as a road safety barrier, lowering the risk of serious collisions.

The existing noise wall will also be extended approximately **42 metres** south along Clyde Road towards Bemersyde Drive, ensuring traffic noise continues to be minimised for nearby residents.

Spot the difference

If you look up on Clyde Road, you may notice something missing. In July, we finished moving approximately **430 metres** of overhead powerlines underground. This critical work not only provides the space needed to accommodate extra lanes on Clyde Road but is also safer and enhances the area's visual appeal.

Image above: With the citybound exit ramp currently closed, crews are powering through drainage, asphalt and widening works.



Sign up for updates
Subscribe for email and SMS updates
at bigbuild.vic.gov.au/roads-subscribe





What's coming up?

In August, we'll start major works to widen the eastern side of the Clyde Road overpass above the Princes Freeway so we can connect in the new southbound lanes currently under construction on Clyde Road.

To complete these works safely, we'll close the Princes Freeway under Clyde Road overnight in one or both directions at times.

We'll also focus on widening the entrance to the Warragul-bound entry ramp, completing drainage relocations, traffic signal upgrades and asphalt works. To do this, we'll close the ramp from **8pm Sunday 10 August until late November**.

While extensive, this long-term closure will reduce the number of ramp closures required in the future to complete the project.

In late August, we'll work around the clock over one weekend to remove sections of concrete along the edge of the overpass, to expose the steel underneath.

Once complete, this will allow the additional steel reinforcement needed to support the extra lanes to be attached directly to the existing structure, creating a seamless join between the old and new.

Image left: An up-close look at one of the 34 foundations we've built to support the wider overpass.

Hydro-what?

To expose the steel along the edge of the overpass we'll use a technique called hydro-demolition. Unlike traditional demolition, this method uses high-pressure water to safely break down the concrete without damaging the steel underneath. To fast-track these works, we'll have three machines of varying sizes working at the same time on the overpass.




Crews work behind barriers to build an additional southbound lane on Clyde Road.

Behind the barriers

Although you can't see it as you drive by, there's lots happening behind the barriers on Clyde Road, with major works underway to widen the road and build the extra southbound lane, which includes a dedicated bus lane to improve public transport efficiency.

So far, we've:

-  removed more than 500 cubic metres of soil
-  installed 115 metres of new drainage
-  placed 150 tonnes of new asphalt

We've also started pouring a wider shared walking and cycling path to improve safety for pedestrians and cyclists.

Working behind barriers to keeping traffic flowing as much as possible will continue to be a primary focus throughout the upgrade.



You cheeky little devil!

In early June, we joined our construction partner, Seymour Whyte at Moonlit Sanctuary in Pearcedale where we spent the morning helping to refresh the enclosure of one of the sanctuary's most famous residents, Ronald the Tasmanian devil. Teams jumped on the wheelbarrows and spread a nice thick layer of new mulch for Ronald, who seemed to like his home makeover.

Thanks for having us, Ronald. We had a devil of a time!

bigbuild.vic.gov.au/roads



For languages other than English please call 9209 0147

1800 105 105 (call anytime)

contact@bigbuild.vic.gov.au



Please contact us if you would like this information in an accessible format. If you need assistance due to a hearing or speech impairment, visit relayservice.gov.au