



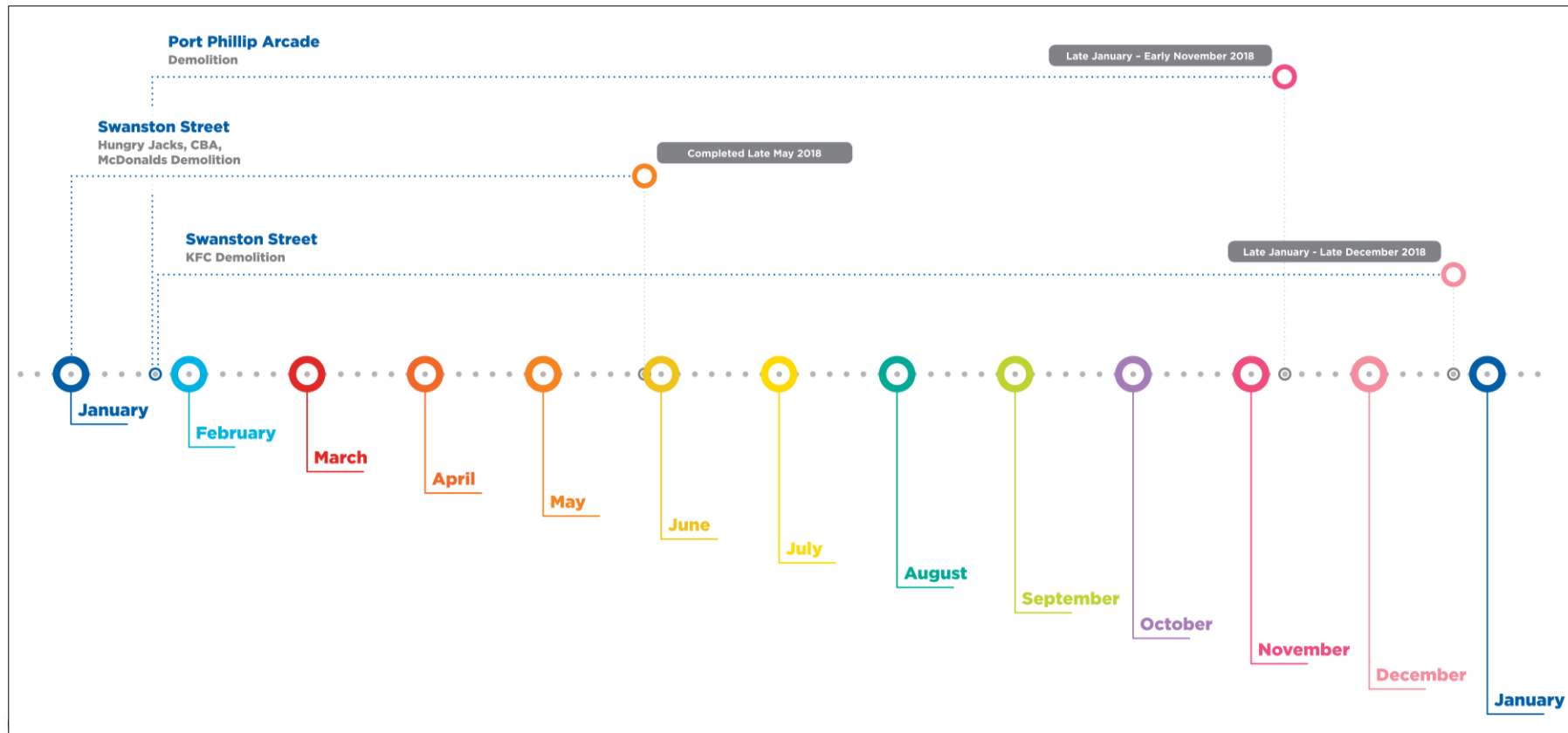
## CBD COMMUNITY REFERENCE GROUP MEETING 15

26 OCTOBER 2018



# JOHN HOLLAND EARLY WORKS UPDATE

# TOWN HALL STATION TIMELINE – EARLY WORKS



# KFC & PORT PHILLIP ARCADE DEMOLITION & NICHOLAS BUILDING WORKS

## **Port Phillip Arcade Demolition**

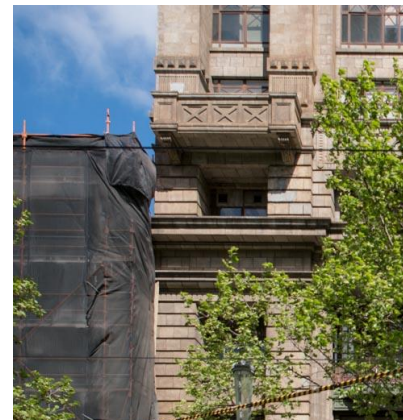
- Ground slab removal underway

## **Former KFC building Demolition**

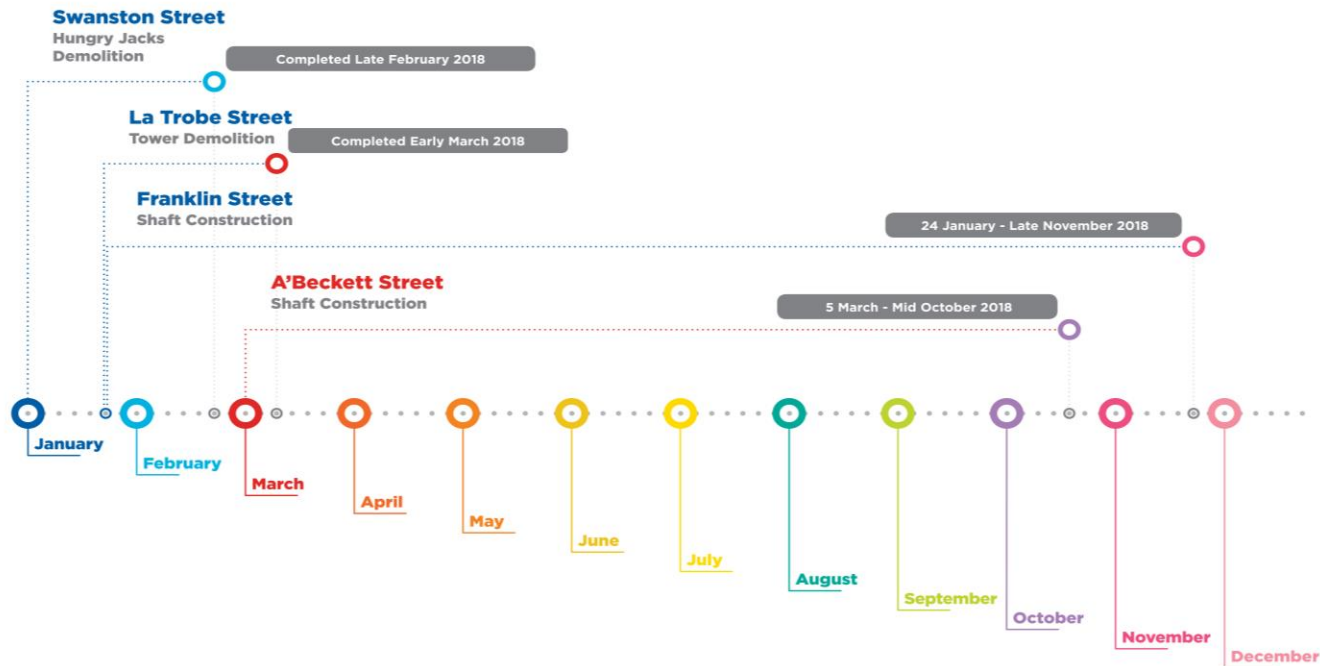
- Works to separate the Nicholas Building from the former KFC building will be ongoing until late November
- KFC demolition works ongoing until December

## **Nicholas Building works**

- Internal works completed
- Scaffolding in place around building, to be removed following completion of KFC demolition

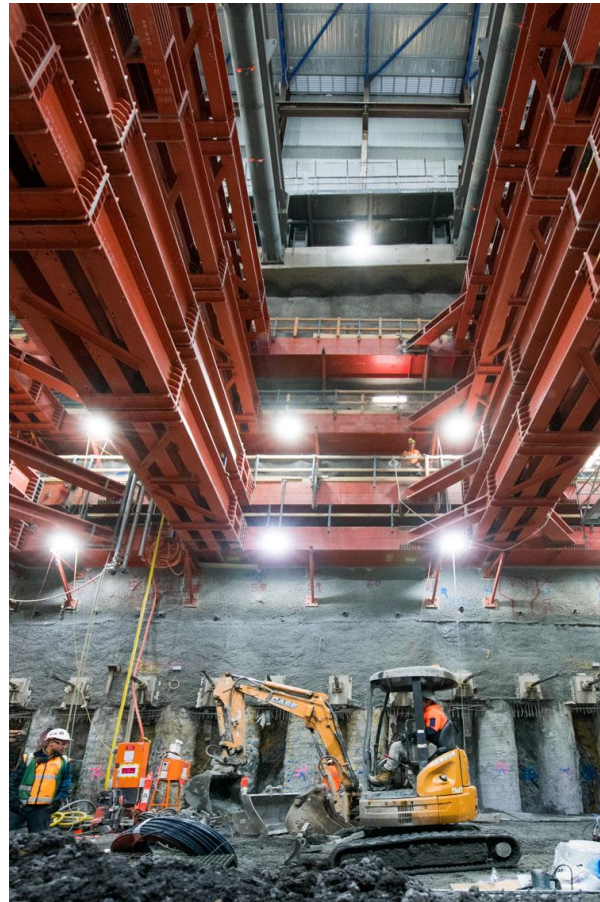


# STATE LIBRARY STATION TIMELINE – EARLY WORKS



# FRANKLIN STREET & A'BECKETT STREET SHAFT UPDATE

- A'Beckett Street shaft in final stage of handover to CYP, all John Holland facilities and materials now removed
- Franklin Street shaft still being excavated with handover to CYP anticipated in late November







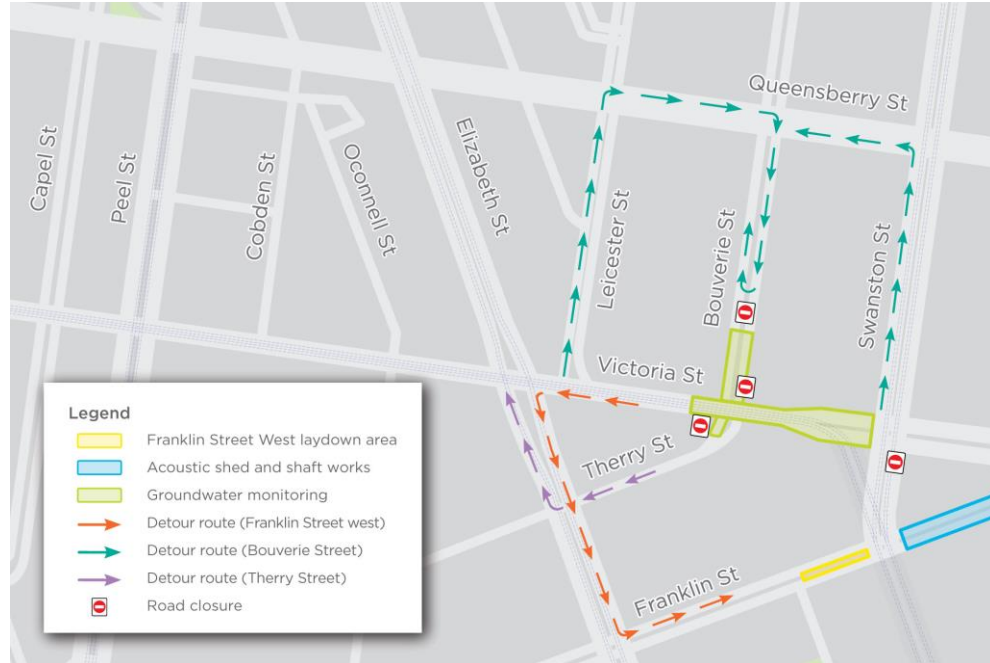
# GROUNDWATER MONITORING UPDATE

## Completed works

- Boreholes
- Watermain relocation
- Boring works and connection

## Underway

- Drilling works to establish three new wells in the westbound lanes on Victoria Street
- Investigate works for new wells in Franklin and Therry Streets
- Trenching works in Bouverie Street to connect wells into system requiring occupation of kerbside carparks
- Commissioning ground water monitoring system – until December







**QUESTIONS?**



# CROSS YARRA PARTNERSHIP UPDATE

1. Creative Program Update
2. Piling
3. State Library Station Update
4. Town Hall Station Update



# CREATIVE PROGRAM UPDATE



## METRO TUNNEL CREATIVE PROGRAM

---

Presented by Mary Parker

October 2018



**Creative  
Program**



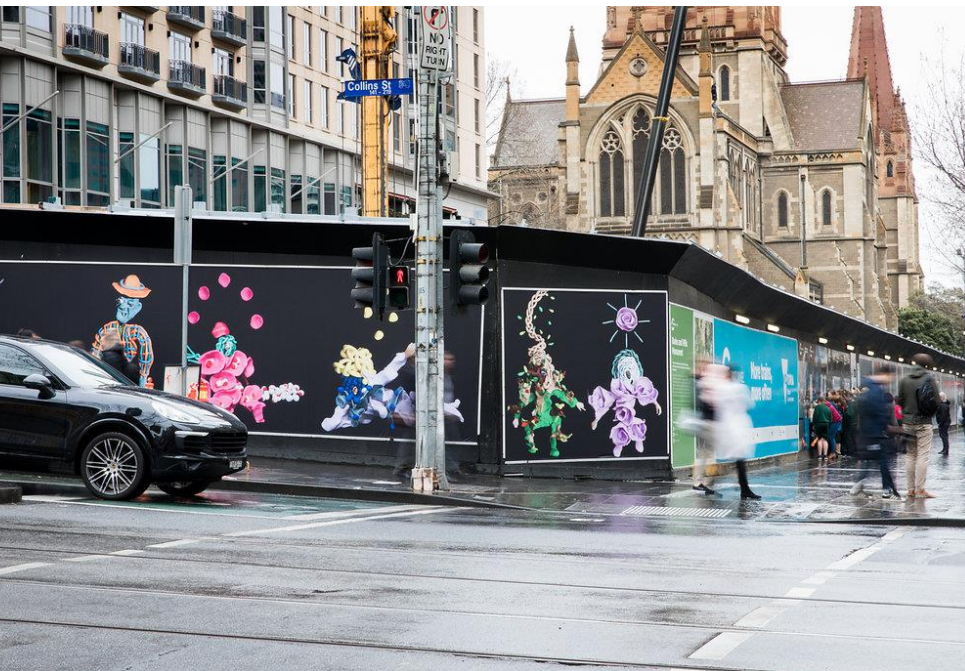
# CULTURAL PROGRAM ACTIVITIES – COMPLETED

- July 2018: Metro Tunnel Walking Tours for Open House
- July 2018: Signed community partnership with Koorie Heritage Trust
- July 2018: Partner of 'Blak Design Matters' at KHT
- August 2018: Creative Practitioner site visit to archaeology dig

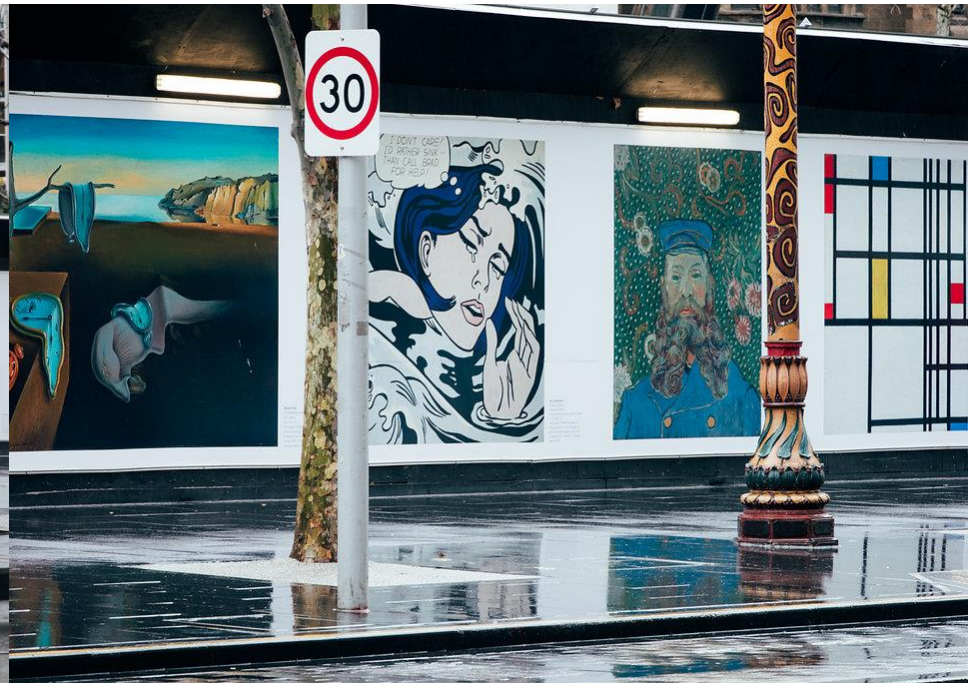
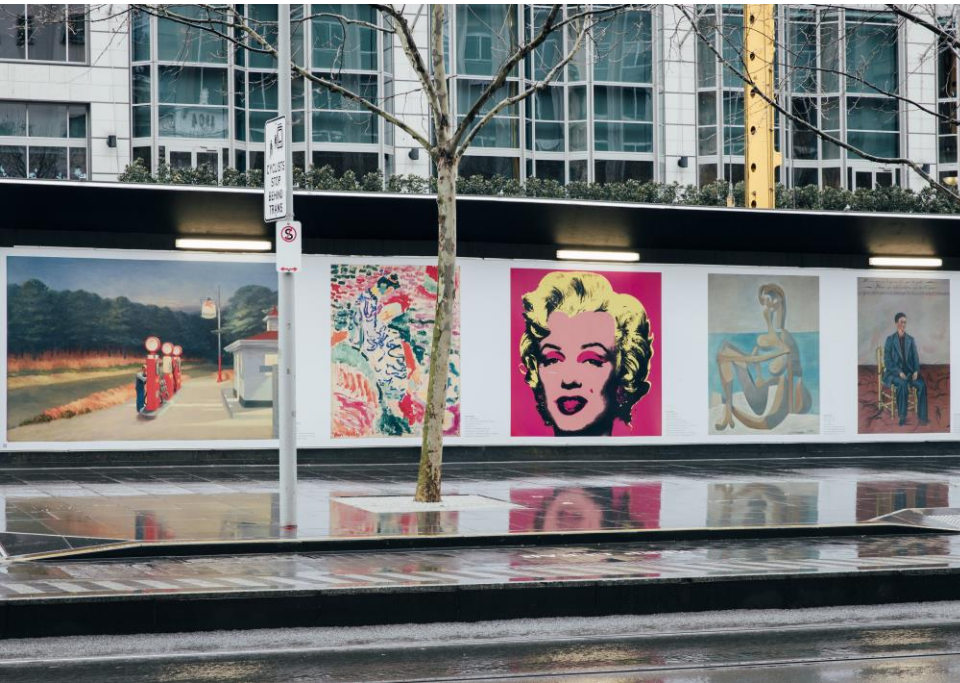




# COLLINS ST – MELBOURNE FASHION WEEK



# CITY SQUARE – MOMA





# CITY SQUARE – RAILWAY









**cityofmelbourne**  
Swanston Street, Melbourne

...



Liked by **tolarno**, **nat.lindeman** and **2,515 others**

**cityofmelbourne** NEW ART: we're loving the extra colour on Swanston Street.

Check out the new RAILway artwork along the City Square fencing. It's by [@peteratkinsta](#)  
The piece gives a nod to vintage rail tickets from the 1920s-1980s and is part of [@metrotunnelvic](#) creative program.

[View all 26 comments](#)



**ilovecaramels** Wow, it looks sensational

1w 4 likes Reply



**pauljameslafferty** So well done people. Love it.

1w 4 likes Reply



**urmila2016** can't wait 😊 to visit next month!

1w 4 likes Reply



**derek\_329** Like it 👍

1w 4 likes Reply



**boomcrashopera** 🥰

1w 3 likes Reply



**diannebeevers\_australia** Brilliant!

1w 3 likes Reply



**deborahstl** Let's go to Swanston Street.

1w 3 likes Reply





# SWANSTON ST – RMIT – JOSH MUIR

NGV // Josh X Muir Exhibition Metrol Tunnel Hoarding // Option 3



**ROBOT Hoarding** // 6.2m wide x 2.0m high. Each 'ROBOT' artwork piece is 100cm wide x 150cm high.



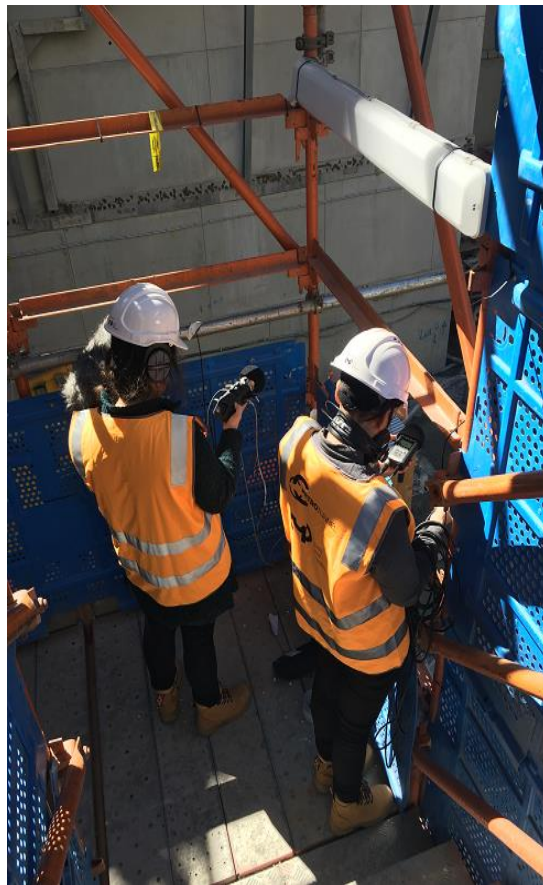
**SELF PORTRAIT Hoarding** // 9.3m wide x 2.0m high. Each 'SELF PORTRAIT' artwork piece is actual size (100cm wide x 150cm high).





# CULTURAL PROGRAM ACTIVITIES – TO COME

- Nov 2018: Tunnel / Vision as part of Melbourne Music Week
- Dec 2018: Christmas in the city



NOV  
21

MMW: Tunnel / Vision

Public · Hosted by Melbourne Music Week

✓ Going ▾

➔ Share ▾

...

🕒 Wednesday, November 21, 2018 at 6 PM – 8 PM

📍 ACMI  
Federation Square, Flinders Street, Melbourne, Victoria, Australia 30... [Show Map](#)

💎 Free

About

Discussion

53 Going · 143 Interested

# FED SQUARE HOARDINGS

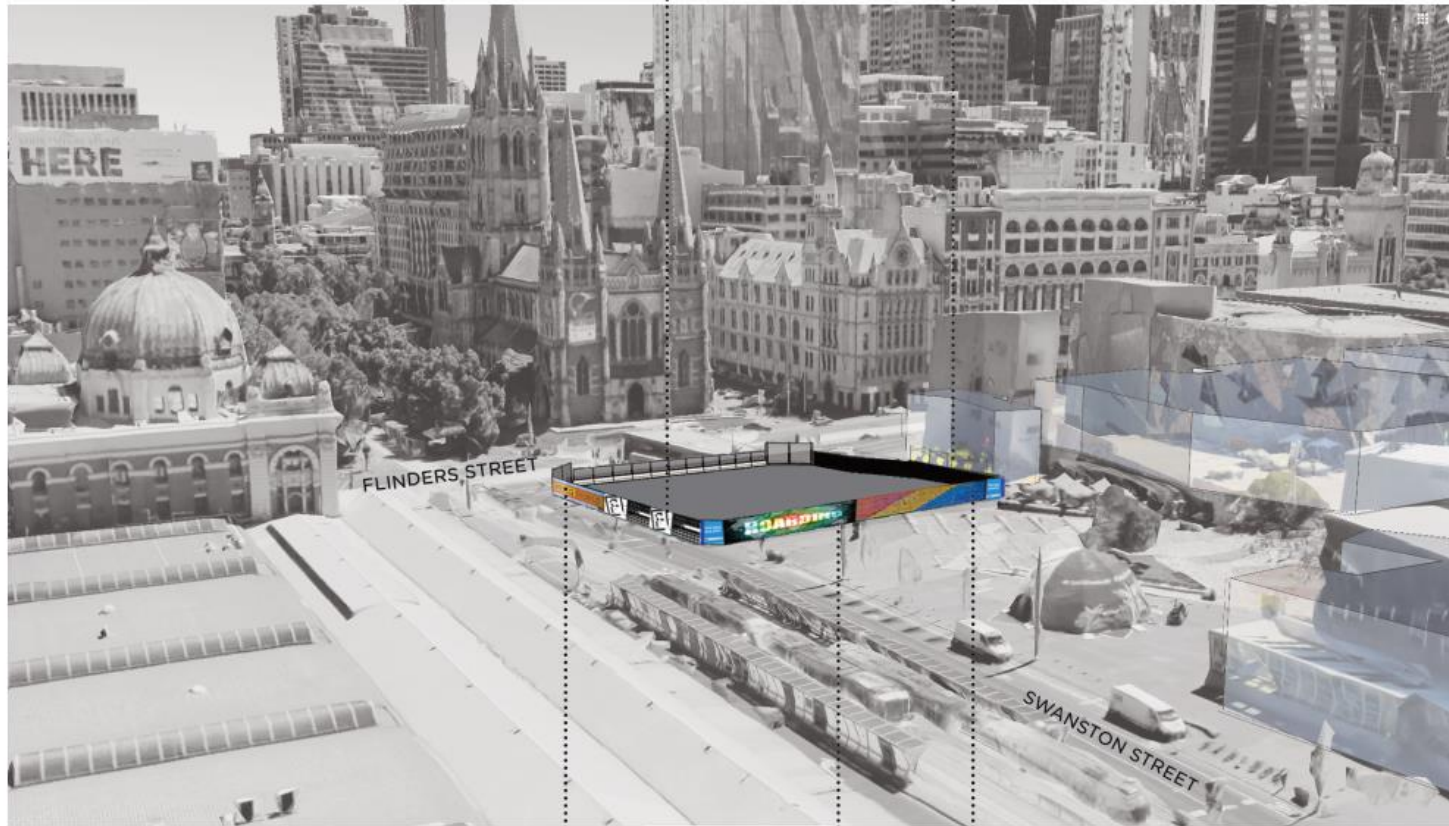






FED SQUARE  
BRANDING

FESTOON  
LIGHTING



LIGHT BOX



DIGITAL  
SCREEN

CREATIVE  
TREATMENT





# ACOUSTIC SHEDS

- Purpose to reduce noise and dust
- Currently in place at Franklin and A'Beckett streets
- Will be constructed in 2019 at City Square, Federation Square and Domain
- Visual treatment options currently being explored with internal and external stakeholders
- Visual options will be integrated with the hoardings

# 2019 – STORYTELLING (ALL INDICATIVE)

- **CBD South** – Visit Victoria collaboration
- **CBD South** – White Night participation
- **CBD South** - Melbourne Fashion Week
- **CBD South - Melbourne Music Week** – Tunnel Vision stage 2
- **CBD South - Koorie Heritage Trust** – walking tours for NAIDOC week
- **CBD South** – Nicholas building tenant photo essay
- **CBD North** – storytelling activation in Urban Square in collaboration with RMIT
- **CBD - Open House** – stories of the past and the future
- **CBD – YIRRAMBOI** – collaborative programming with City of Melbourne for City Square
- **Precinct wide: City of Literature collaboration**– writers site visit to prompt concepts





# PILING



# PILING PROCESS

- Piling is required prior to excavation to create a support structure to allow the safe excavation of the shafts

## Stages of piling

Start of the pile top removal process

1

### SETTING UP THE RIG

Deliver the rig to site and move it into position



2

### DRILLING

Drilling holes into the ground using a core barrel, and excavating material



3

### STEEL REINFORCEMENT

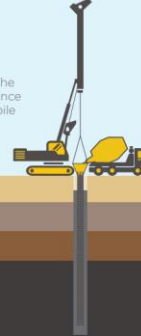
Removing the material and inserting a prefabricated steel reinforcement cage into the hole



4

### CONCRETE POURING WITH TREMIE PIPE

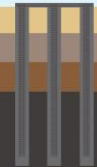
Pouring concrete into the hole to form the pile. Once the concrete sets, the pile is complete



5

### CAPPING THE PILES

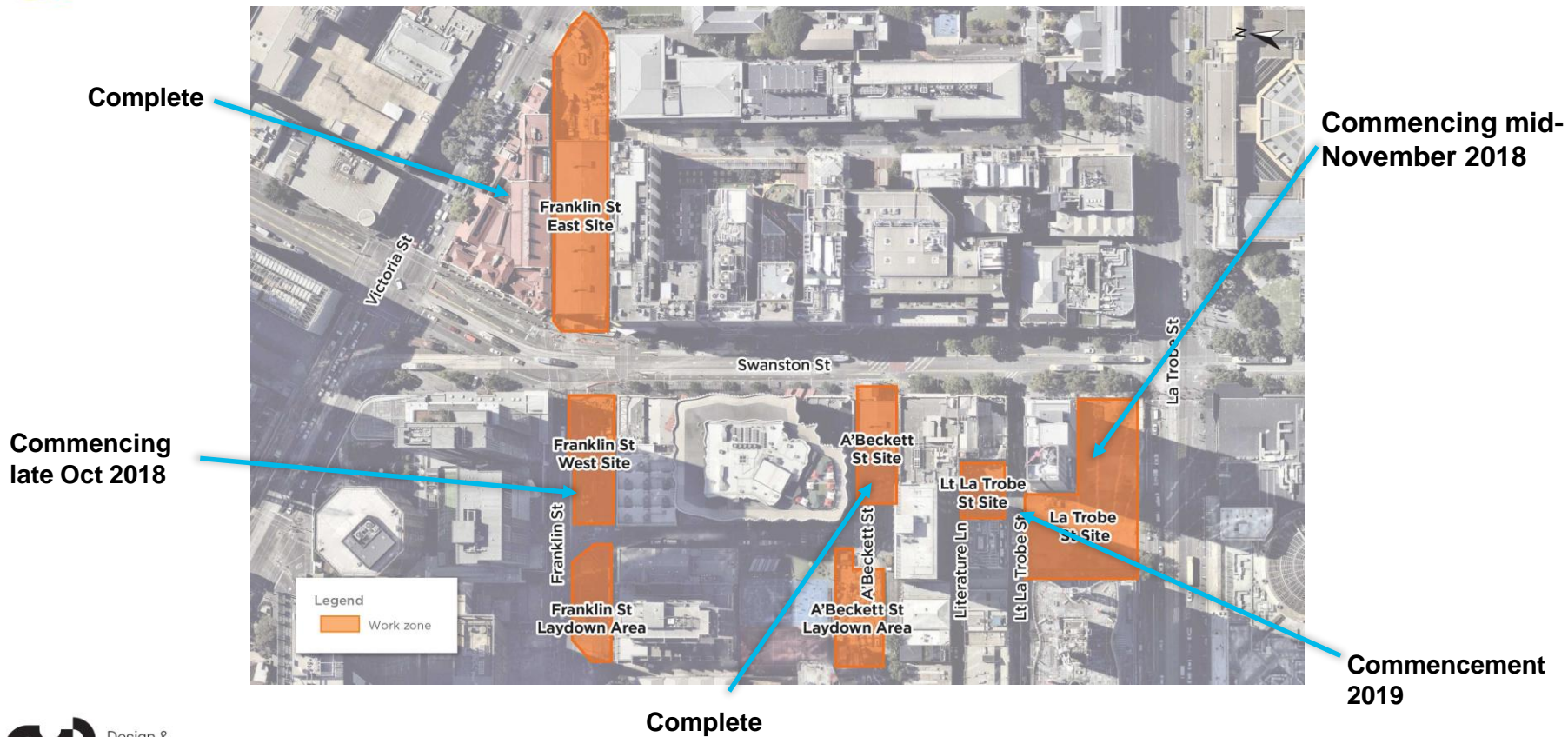
Once the piles are constructed, the top layer of concrete is removed and topped by a capping beam to prevent lateral displacement.



# PILING AT PARKVILLE

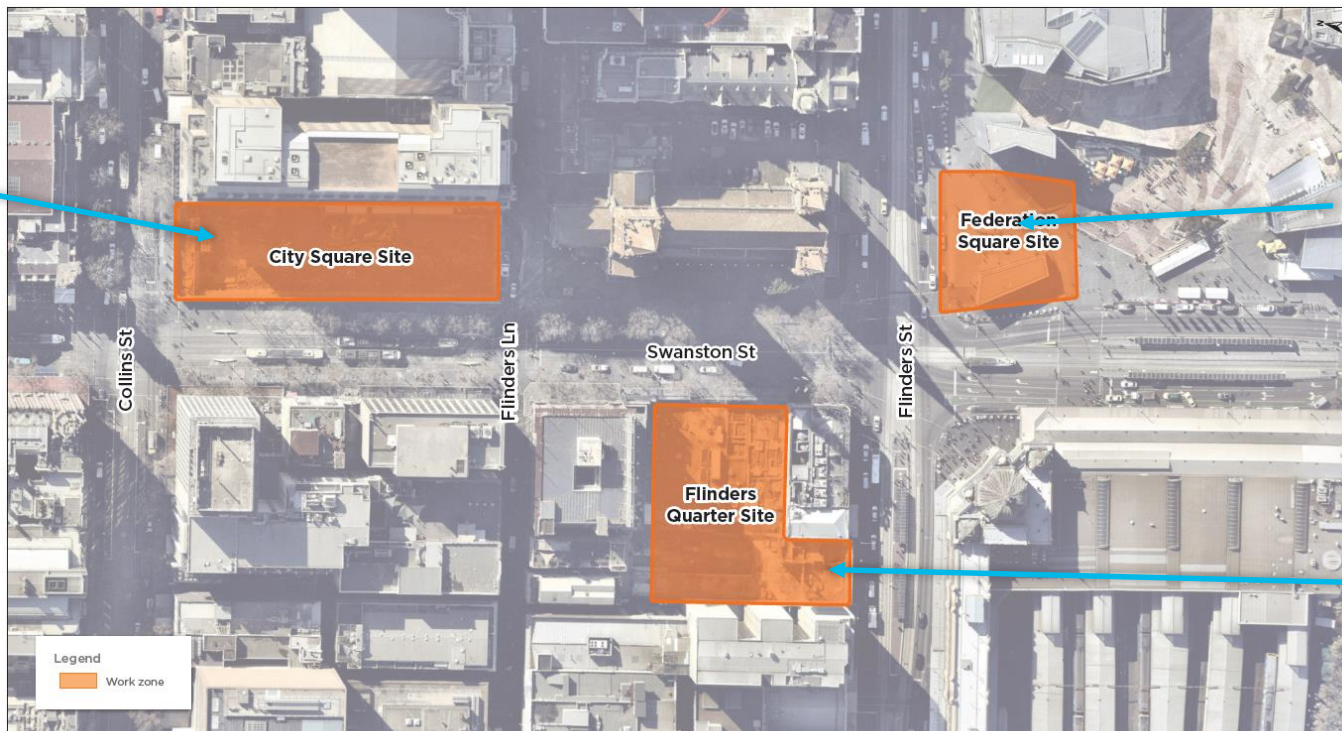


# PILING UPDATE – STATE LIBRARY



# PILING UPDATE – TOWN HALL STATION

In Progress –  
25%



Indicative only.

Commencement  
Q1 2019

Commencement  
Q1 2019



# STATE LIBRARY STATION UPDATE



# FRANKLIN STREET WEST

Activity	Involves	Timing
Set up construction shaft site and laydown area	<ul style="list-style-type: none"> <li>• Pedestrian covered walkway installation, requiring Franklin Street southside footpath closure</li> <li>• Service investigations</li> <li>• Installing barriers</li> </ul>	Ongoing – November 2018
Piling platform and support works	<ul style="list-style-type: none"> <li>• Piling rig delivery</li> <li>• Crane delivery</li> </ul>	Ongoing – late October 2018
Piling at shaft site	<ul style="list-style-type: none"> <li>• Piling (72 piles) at approx. 35-45 m</li> <li>• Reinforcement deliveries</li> <li>• Concrete deliveries</li> </ul>	Late October 2018 – Q2 2019

*Indicative*



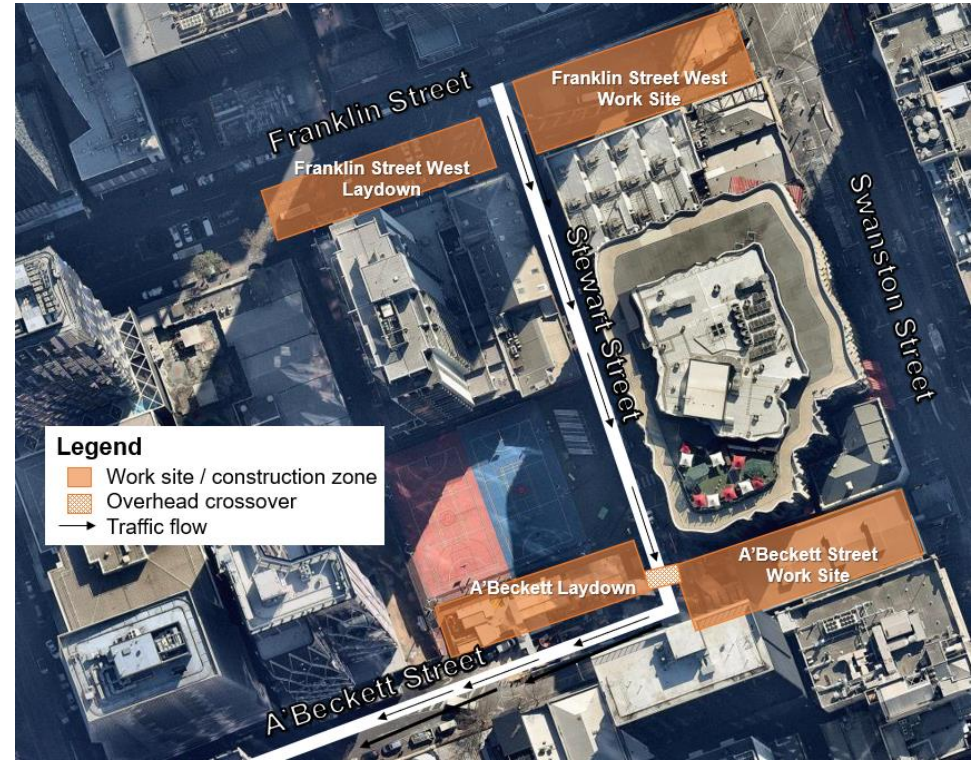
# A'BECKETT STREET SITE

Activity	Involves	Timing
Site establishment / handover	<ul style="list-style-type: none"><li>• Line-marking</li><li>• Investigating underground services</li><li>• Delivering site sheds, materials and equipment</li><li>• Constructing a covered walkway over Stewart Street for workers</li><li>• Installing hoarding, and barriers around the work sites</li><li>• Removing and installing traffic signs</li></ul>	22 October – December 2018
Material delivery	<ul style="list-style-type: none"><li>• Road header delivery</li></ul>	Early-mid November
Excavation	<ul style="list-style-type: none"><li>• 24 hour excavation</li></ul>	Ongoing

*Indicative*

# A'BECKETT STREET TRAFFIC CHANGES

- Daytime closures for Stewart Street
- Stewart Street will open at night
- In late November, following site establishment works, Stewart Street will re-open as a one-way street, running southbound direction.



*Indicative*

# LITTLE LA TROBE STREET

Activity	Involves	Timing
<b>Demolition</b>	<ul style="list-style-type: none"> <li>• Demolition of three buildings</li> <li>• Changed traffic conditions in Little La Trobe and Literature Lane</li> <li>• Up to 30 minute closures of Literature Lane to allow for safe removal of material for Doki Doki demolition</li> </ul>	29 October 2018 – February 2019
<b>Archaeology</b>	<ul style="list-style-type: none"> <li>• Using a small excavator and hand tools to excavate the area</li> </ul>	February – June 2019
<b>Further relocation works</b>	<ul style="list-style-type: none"> <li>• Service works in Literature Lane prior to piling</li> <li>• Sewer relocations</li> <li>• Gas proving and relocation: Literature Lane traffic changes</li> </ul>	Sewer relocations: January 2019 Gas proving: Mid-late November Gas relocation: Mid-2019

*Indicative*

# LITERATURE LANE – WORKS MAP



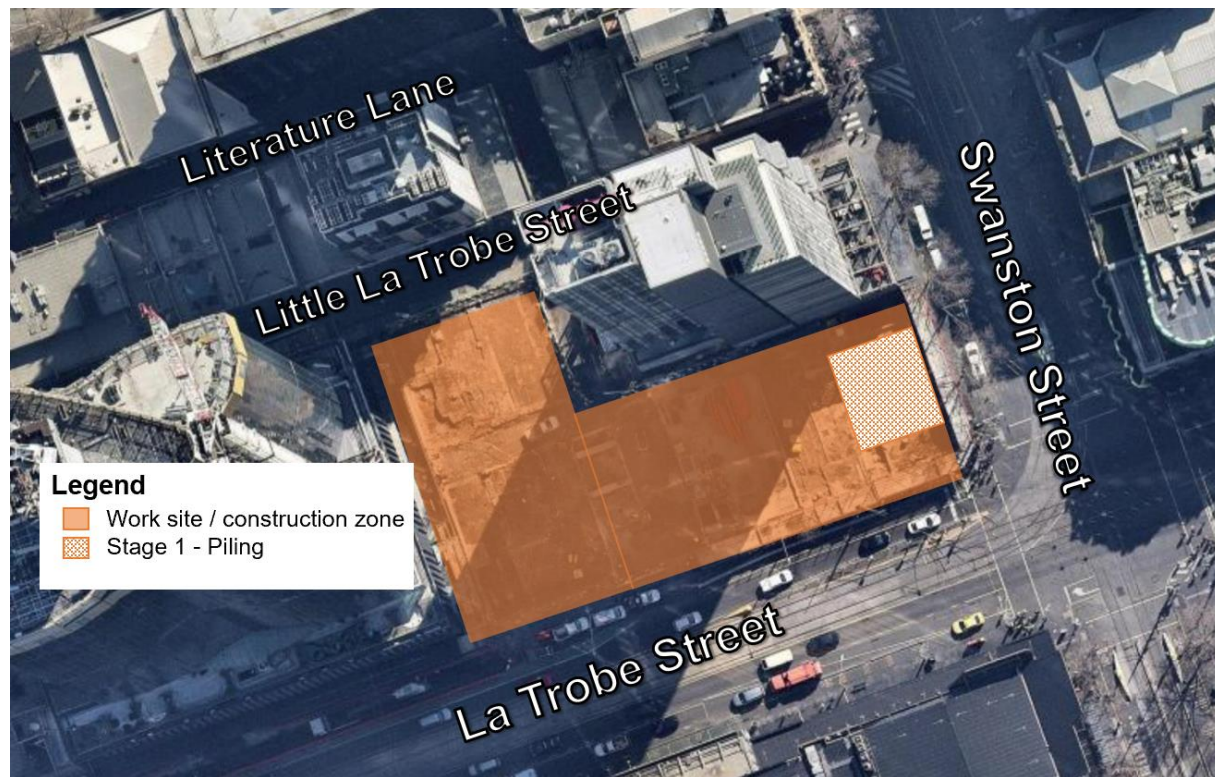
# LA TROBE STREET SITE

Activity	Involves	Timing
Archaeology	<ul style="list-style-type: none"> <li>Using a small excavator and hand tools to excavate the area</li> </ul>	Ongoing – November 2018
Driveway installation	<ul style="list-style-type: none"> <li>Driveways installed</li> <li>Tram stop shelter removal (awaiting Yarra Trams to remove)</li> </ul>	Completed
Piling preparation	<ul style="list-style-type: none"> <li>Slab and basement demolition (ongoing)</li> <li>Intermittent footpath closures on La Trobe</li> <li>Piling platform (crushed rock deliveries compaction)</li> </ul>	Ongoing – mid November 2018
Piling	<ul style="list-style-type: none"> <li>Piling rig delivery</li> <li>Reinforcement deliveries</li> <li>Concrete deliveries</li> </ul>	From mid November 2018

*Indicative*



# LA TROBE STREET – PILING







# TOWN HALL STATION UPDATE

# CITY SQUARE SITE UPDATE



Activity	Involves	Timing
Material removal	<ul style="list-style-type: none"> <li>Using a conveyor to load trucks</li> <li>Some hammering may be required</li> <li>Out of hours spoil removal required up to 7pm</li> </ul>	Ongoing
Piling	<ul style="list-style-type: none"> <li>Reinforcement deliveries</li> <li>Piling works</li> <li>Concrete deliveries</li> </ul>	Ongoing – February 2019
Collins Street civil works	<ul style="list-style-type: none"> <li>Adjusting hoarding to install a new gate that accommodates larger vehicles</li> <li>Utility relocations on the southern Collins Street footpath</li> </ul>	End November TBC

*Indicative*

# CITY SQUARE – OUT OF HOURS DELIVERIES

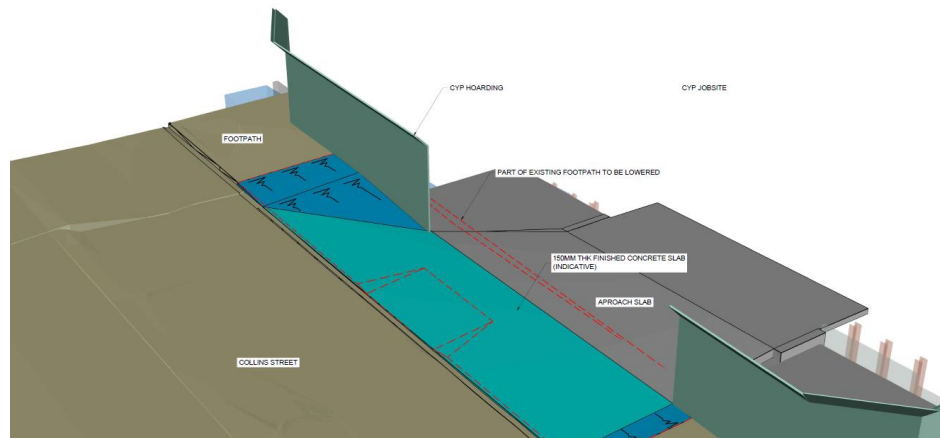


Indicative only.

Oversized deliveries are required at this time due to relevant traffic permits

- **Conveyor belt:** Monday 29 October, 10pm – 6am
- **Piling rig mobilisation:** Wednesday 7 – Friday 9 November, 10pm – 6am
- **Traffic changes:**  
Flinders Lane will be closed between Swanston Street and Russell Street during these deliveries

# COLLINS STREET CIVIL WORKS



## What:

- Creating a new crossover into the City Square site
- Adjusting hoarding to install a new gate that accommodates larger vehicles
- Relocating utilities on the southern Collins Street footpath

## When:

- Nightworks (10pm – 5am), from late November for 3 weeks
- Dayworks (7am – 6pm) and nightworks (10pm-5am), from early January for 1 week TBC

## Traffic/Pedestrian changes:

- Collins Street southern footpath and road closure during working hours TBC

# FLINDERS QUARTER UPDATE



Activity	Involves	Timing
Archaeology	<ul style="list-style-type: none"> <li>Using a small excavator and hand tools to excavate the area</li> </ul>	Ongoing – December 2018
Demolition of archaeology footings*	<ul style="list-style-type: none"> <li>Using jackhammers, excavators, and a tipper truck to remove previous building footings</li> </ul>	Ongoing – December 2018
Port Phillip Arcade basement demolition (JHEW)	<ul style="list-style-type: none"> <li>Using jackhammers and excavators</li> <li>Removal of rubble</li> </ul>	Ongoing – November 2018
Piling preparation works	<ul style="list-style-type: none"> <li>Crushed rock deliveries</li> <li>Rock compaction</li> <li>Perimeter cutting</li> <li>Piling rig deliveries (nightworks)</li> </ul>	Ongoing – January 2019
Piling	<ul style="list-style-type: none"> <li>Piling works</li> <li>Reinforcement deliveries</li> <li>Concrete deliveries</li> </ul>	Late January – August 2019

*Indicative*

# SWANSTON AND FLINDERS STREETS – OUT OF HOURS WORKS

## What:

- Removal and trimming of trees
- Tram pole relocations
- Gantry removal and installation
- Footpath crossovers

## When:

8pm – 6am, Sunday to Thursday from 7th – 30th November 2018

## Pedestrian changes:

- Swanston Street western footpath closure between Young & Jackson and the Nicholas Building
- Flinders Street footpath closure





# FEDERATION SQUARE UPDATE



Activity	Involves	Timing
Flinders Street civil works	<ul style="list-style-type: none"> <li>• Closure of one westbound lane</li> <li>• Concrete barrier construction</li> <li>• Implementing new signal changes</li> <li>• Kerb alignment works</li> </ul>	Ongoing – mid November (nightworks)
Demolition	<ul style="list-style-type: none"> <li>• Demolition of the Western Shard and Federation Deck</li> </ul>	Ongoing until January 2019

*Indicative*

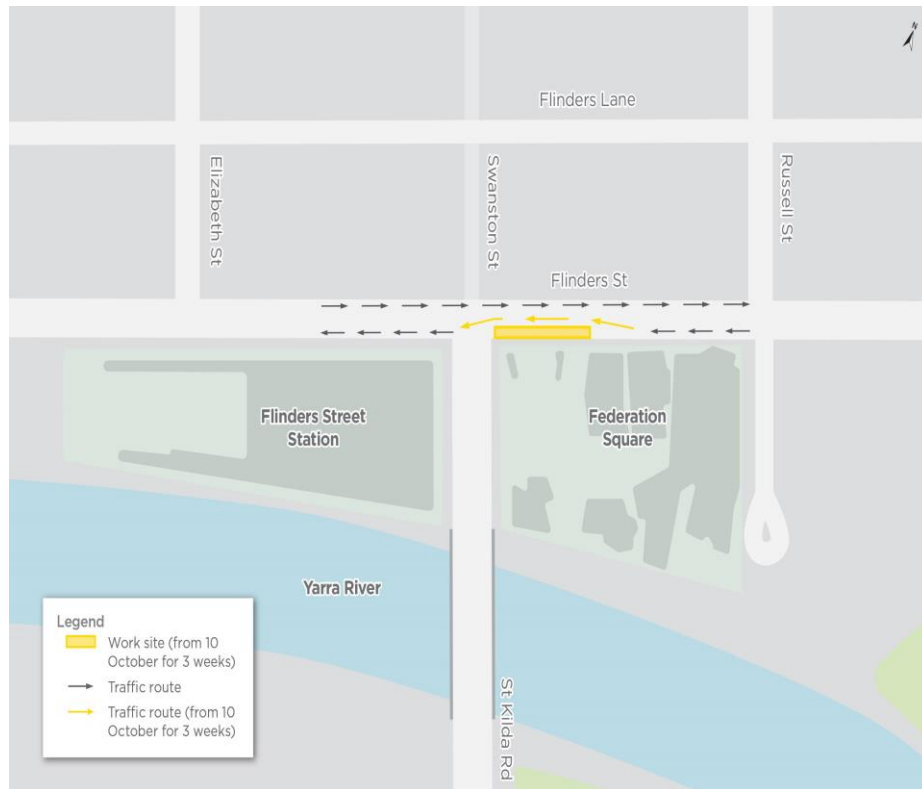
# FED SQUARE CIVIL WORKS – STAGE 3

## Stage 3:

Ongoing – mid November

Construction of a concrete barrier using an excavator, jackhammer and saw cut between the two westbound left-hand turning lanes

**When:** 10pm – 5am



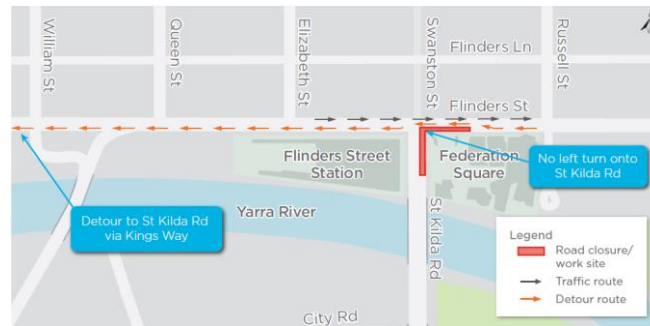
# FED SQUARE CIVIL WORKS – STAGE 4

## Stage 4:

Early – late November

- Changing the kerb using an excavator, jackhammer and saw cut
- Realigning the pedestrian crossover on the corner of Federation Square at the Flinders Street and Swanston Street intersection
- Relocating tram poles

**When:** 10pm – 5am



*Kerb Works*



*Tram pole relocations: two nights*

# GEOTECHNICAL INVESTIGATIONS

	Groundwater well installation	Recharge Testing
What	<ul style="list-style-type: none"> <li>Installing nine groundwater wells</li> <li>Temporary worksites</li> <li>Localised traffic and pedestrians changes during works</li> </ul>	<ul style="list-style-type: none"> <li>Recharge testing occurs at existing well locations</li> <li>Connection to a water supply will need to be established</li> <li>Localised traffic and pedestrian changes during works</li> </ul>
When	<ul style="list-style-type: none"> <li>7am – 6pm</li> <li>10pm – 6am</li> </ul> <p>For certain well locations, out of hours work is required to minimise disruption</p>	<ul style="list-style-type: none"> <li>24/7 for 1-2 weeks</li> </ul> <p>Out of hours work is required in order to complete the tests</p>

Geotechnical investigations



Indicative only



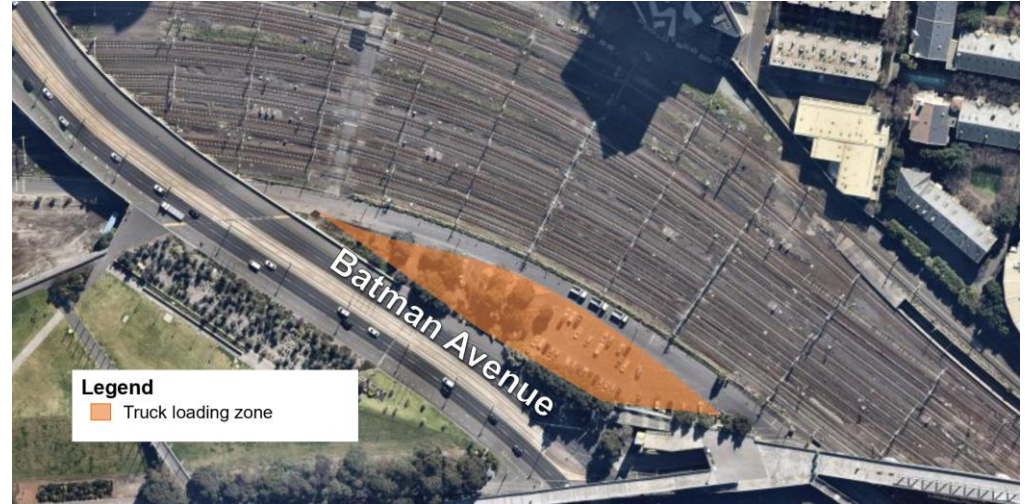
# 100 BATMAN AVENUE CARPARK OCCUPANCY

**Site handover:** Tuesday 30 October 2018

Public parking will be removed until late 2023

**This involves:**

- Site fencing and barriers installation
- Tree removal (RPV)





**QUESTIONS?**