



## CBD COMMUNITY REFERENCE GROUP – MARCH 2019

CROSS YARRA PARTNERSHIP



1. State Library Station Update
2. Town Hall Station Update



# STATE LIBRARY STATION UPDATE



**FRANKLIN STREET EAST UPDATE**

# FRANKLIN STREET EAST UPDATE

Activity	Involves	Timing
Site establishment	<ul style="list-style-type: none"><li>• Fit-out of staff facilities</li><li>• Minor crane lifts for equipment</li></ul>	Ongoing – late March 2019
Excavation of shaft and adit	<ul style="list-style-type: none"><li>• Roadheader delivery - complete</li><li>• Lowering the shaft by 1.6 metres</li><li>• Excavating the adit across Swanston Street</li></ul>	February – May 2019
Cavern excavation	<ul style="list-style-type: none"><li>• Excavating the main cavern from the Franklin Street East shaft</li><li>• Shaft works (shotcreting, reinforcement)</li></ul>	Late May 2019 commencement

# MEET LOUISE





## FRANKLIN STREET WEST UPDATE

# FRANKLIN STREET WEST UPDATE

Activity	Involves	Timing
Piling	<ul style="list-style-type: none"> <li>85% complete at approx. 35-45 m</li> <li>Reinforcement and concrete delivers</li> <li>Pile breakback</li> </ul>	Ongoing – mid-April 2019 <ul style="list-style-type: none"> <li>7am – 6pm</li> <li>6pm – 10pm (concrete pouring)</li> </ul>
Capping beam works	<ul style="list-style-type: none"> <li>Capping beam works</li> <li>Excavating 2 meters</li> </ul>	April – June 2019
Deck excavation and strutting	<ul style="list-style-type: none"> <li>Delivery and installation of prefabricated steel to be installed and bolted together onsite</li> <li>Strutting construction for level 1</li> </ul>	May – October 2019





# ACOUSTIC SHED

INSERT SHED RENDER



**A'BECKETT STREET UPDATE**

# A'BECKETT STREET SITE UPDATE



Activity	Involves	Timing
Adit excavation	<ul style="list-style-type: none"> <li>• Heading excavation - complete</li> <li>• Bench excavation across Swanston Street</li> </ul>	Ongoing – mid-March
Cavern excavation	<ul style="list-style-type: none"> <li>• Using a roadheader under Swanston Street</li> <li>• Shaft works (shotcrete, reinforcement)</li> </ul>	Mid-March 2019 – until 2020



M.T.S.

Cafe Star

Open for business  
Little La Trobe Street

**LITTLE LA TROBE STREET UPDATE**

# LITTLE LA TROBE STREET SITE UPDATE

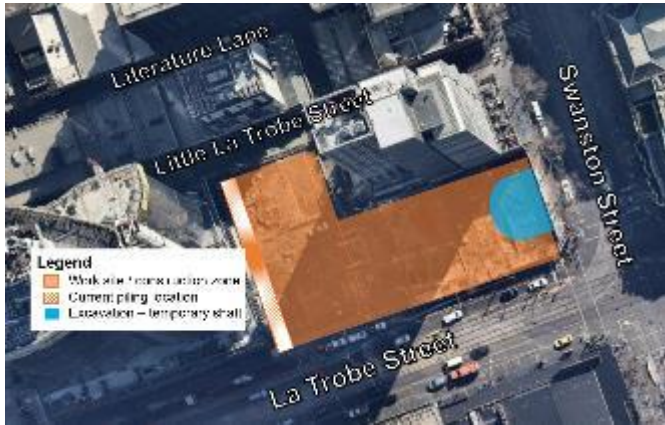


Activity	Involves	Timing
Demolition	<ul style="list-style-type: none"> <li>Demolition of two buildings ongoing</li> </ul>	Ongoing – mid April 2019
Service relocation works	<ul style="list-style-type: none"> <li>Sewer and gas relocation works in Literature Lane and Little La Trobe Street</li> </ul>	Sewer: March – May 2019  Gas: May – June 2019
Archaeology	<ul style="list-style-type: none"> <li>Hammering of base slab</li> <li>Using a small excavator and hand tools to excavate the area</li> </ul>	May 2019 for 16 weeks



## LA TROBE STREET UPDATE

# LA TROBE STREET SITE UPDATE



La Trobe Street site map

Activity	Involves	Timing
<b>Piling (Stage 2) - perimeter</b>	<ul style="list-style-type: none"> <li>Reinforcement deliveries</li> <li>Concrete deliveries</li> <li>Spoil removal</li> <li>Mobilising 2<sup>nd</sup> piling rig on 13<sup>th</sup> March, 1am – 5am</li> </ul>	February 2019 – mid 2020
<b>Excavation (Stage 1)</b>	<ul style="list-style-type: none"> <li>Excavating down 37 meters for cavern access</li> </ul>	February - June 2019
<b>Service relocations on La Trobe Street</b>	<ul style="list-style-type: none"> <li>Stormwater, water main, low voltage, telecom relocations</li> <li>Various closures (e.g. slow lane, fast lane, full) over two month period</li> </ul>	Commencing mid 2019 for approx. 2 months  <i>Pending relevant approvals</i>



# TOWN HALL STATION UPDATE



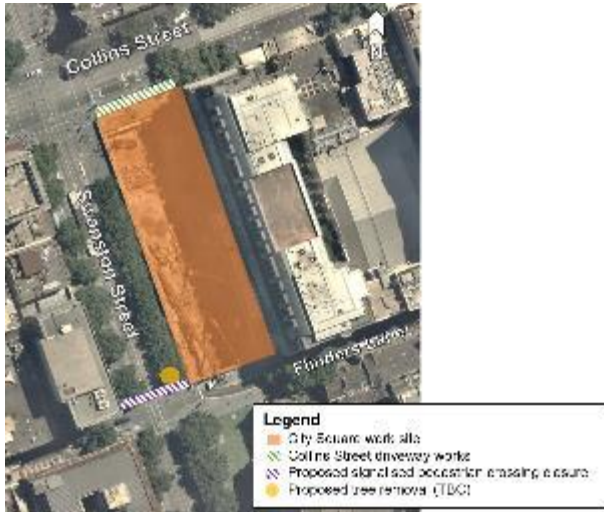


**CITY SQUARE UPDATE**

# CITY SQUARE – INTERNAL SITE WORKS

Activity	Involves	Timing
Piling	<ul style="list-style-type: none"> <li>80% piling complete</li> </ul>	Ongoing – late March 2019
Piling demobilisation – night works	<p><b>Stage 1:</b> Monday 1 – Saturday 6 April (TBC)</p> <ul style="list-style-type: none"> <li>Removal of small equipment, conveyor etc from Flinders Lane loading bay</li> </ul> <p><b>Stage 2:</b> Monday 8 – Thursday 11 April (TBC)</p> <ul style="list-style-type: none"> <li>350T crane on Flinders Lane to removal large plant</li> <li>Install new plant for deck installation</li> <li>1 week closure of Flinders Lane</li> </ul>	Early April
Deck construction	<ul style="list-style-type: none"> <li>Delivery and installation of prefabricated steel to be installed and bolted together onsite</li> </ul>	April – August TBC
Acoustic shed construction	<ul style="list-style-type: none"> <li>20mt high</li> <li>Precast concrete cladding panels</li> <li>Concrete slab removal, 25T excavator with hammer attachment - May TBC</li> </ul>	May – October TBC

# CITY SQUARE – EXTERNAL WORKS



Activity	Involves	Timing
<b>Collins Street footpath works</b>	<ul style="list-style-type: none"> <li>Service relocations - complete</li> <li>Modification of the footpath to allow for a driveway into site</li> </ul>	Ongoing- May 2019
<b>Swanston Street footpath works</b>	<ul style="list-style-type: none"> <li>Pedestrian crossing closure trial – mid-March TBC</li> <li>Tree removal – late-March TBC</li> <li>Modification of the footpath to allow for a driveway into site</li> </ul>	March/April TBC
<b>Concrete pump works</b>	<ul style="list-style-type: none"> <li>Delivery of concrete and the use of the concrete pump</li> </ul>	Saturday 16 March <ul style="list-style-type: none"> <li>7am – 6pm</li> </ul>

# CITY SQUARE – CONCRETE SLAB DEMOLITION

**Example:** Concrete slab demolition staging

## 1. Slab intact



## Legend

- City Square site
- Deck
- Basement slab
- Demolition

## 2. Deck install



## 3. Slab demo following deck install



The concrete slab will be broken up progressively after each section of the deck is installed

- **Working hours:** 7am – 6pm, Monday to Friday
- **When:** May TBC
- **Equipment:** 25T excavator with hammer attachment

# CITY SQUARE – OUT OF HOURS WORKS

- **Flinders Lane loading bay** - ongoing extended hours concrete and cage deliveries, crane lifts
  - Monday to Friday, 6pm – 10pm
  - Saturdays, 1pm – 4pm
  - Thursday 14 March, 10pm – 7am (steel deliveries for capping beam works)
- **Collins Street** -
  - Service investigation for driveway works: Wednesday 13 March, 11pm – 4am
- **Piling demobilization** – Monday to Friday, 6pm – 10pm
  - Stage 1: removal of equipment from Monday 1 – Saturday 6 April, 7pm – 7am (TBC)
  - Stage 2: piling rig removal from Monday 8 – Thursday 11 April (TBC), requiring 72 Flinders Lane closure



## FLINDERS QUARTER UPDATE

# FLINDERS QUARTER – INTERNAL SITE WORKS

Activity	Involves	Timing
Demolition	<ul style="list-style-type: none"><li>• KFC Building – basement slab and footings</li><li>• Port Phillip Arcade – suspended slab and basement slab</li></ul>	Ongoing – late March 2019
Piling	<ul style="list-style-type: none"><li>• Piling preparation works – piling platform, material delivery and compaction</li><li>• Piling rig delivery late March TBC</li><li>• Piling to start late March TBC</li></ul>	Ongoing – late 2019

# FLINDERS QUARTER – EXTERNAL SITE WORKS

Activity	Involves	Timing
<b>Stabilisation works</b>	<ul style="list-style-type: none"><li>• Cocker Alley excavation (2 weeks)</li><li>• Scott Alley excavation (3 weeks)</li></ul>	Starting w/c 11 March (TBC)



# FLINDERS QUARTER – OUT OF HOURS WORKS

- **Piling preparation works** – extended hours
  - Monday to Friday, 6pm – 10pm
  - Saturdays, 1pm – 4pm
- **Tree protection works** on Swanston Street, adjacent to the Nicholas Building due gantry works (MTEW)
  - Sunday 17 March, 10pm – 5am
- **Deliveries:** piling rig mobilisation
  - Piling rig mobilisation: Monday 18 – Thursday 21 March, 10pm – 6am
  - Cage deliveries (start 18 March): Monday to Friday, 5am to 6:30am



**FEDERATION SQUARE UPDATE**

# FEDERATION SQUARE

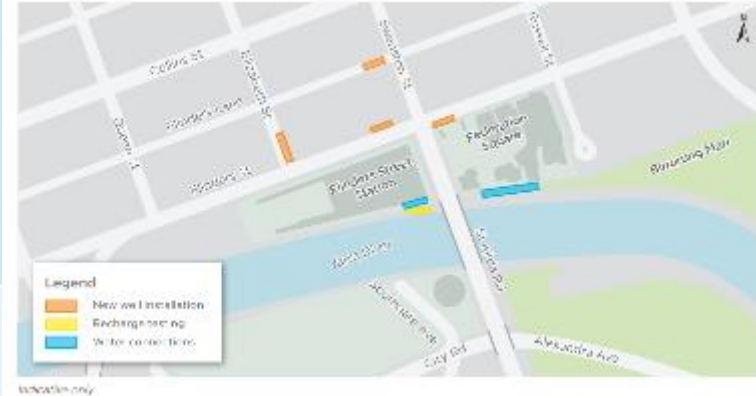


Activity	Involves	Timing
<b>Demolition</b>	<ul style="list-style-type: none"> <li>• Ongoing demolition of the former Melbourne Visitor's Centre basement</li> <li>• Strutting support installation</li> </ul>	Ongoing – March 2019
<b>Piling preparation</b>	<ul style="list-style-type: none"> <li>• Material delivery and compaction</li> <li>• Piling rig delivery – 24 March TBC</li> </ul>	March 2019
<b>Piling</b>	<ul style="list-style-type: none"> <li>• Concrete and reinforcement deliveries</li> <li>• Piling works</li> <li>• Capping beam construction/concreting</li> </ul>	March – July 2019
<b>Excavation and Deck/Shed Construction</b>	<ul style="list-style-type: none"> <li>• Excavation for 8 meters to commence</li> <li>• Deck installation to commence</li> <li>• Shed construction to commence</li> </ul>	July – December TBC

# FEDERATION SQUARE – OUT OF HOURS WORK

- **Extended hours:** demolition, excavation, strutting, well installation, crane lifts, equipment deliveries
  - Sunday to Thursdays, 6pm – 5am
- **Deliveries** – Flinders Street westbound lane closures between Russell Street and Swanston Street (including piling mobilisation on 24 – 28 March)
  - Sunday to Thursdays, 6pm – 5am (intermittent closures)

	Groundwater well installation	Recharge testing	Permanent connections work
What	<ul style="list-style-type: none"> <li>Installing four groundwater wells</li> <li>Temporary worksites</li> <li>Localised traffic and pedestrians changes during works</li> </ul>	<ul style="list-style-type: none"> <li>Recharge testing occurs at existing well locations</li> <li>Connection to a water supply will need to be established</li> <li>Localised traffic and pedestrian changes during works</li> </ul>	<ul style="list-style-type: none"> <li>Connection involves scanning the area, saw cutting, non-destructive digging, and excavation</li> <li>1-2 weeks to complete</li> </ul>
When	<ul style="list-style-type: none"> <li>7am – 6pm</li> <li>10pm – 6am</li> </ul> <p>For certain well locations, out of hours work is required to minimize disruption</p>	<ul style="list-style-type: none"> <li>24/7 for 1-2 weeks</li> </ul> <p>Out of hours work is required in order to complete the tests</p>	<ul style="list-style-type: none"> <li>7am – 6pm, Monday to Friday for 1-2 week</li> </ul>





**QUESTIONS?**