



# STATE LIBRARY STATION COMMUNITY REFERENCE GROUP

CROSS YARRA PARTNERSHIP  
FRIDAY 17 JULY 2020





## STATE LIBRARY STATION COMMUNITY REFERENCE GROUP

---

Jodie Barrington, CBD Precinct Lead, CYP D&C

Melinda Kelly, State Library Station Stakeholder Engagement Manager, CYP D&C

Mary Parker, Director Communications and Creative, Project Co



Construction partner:

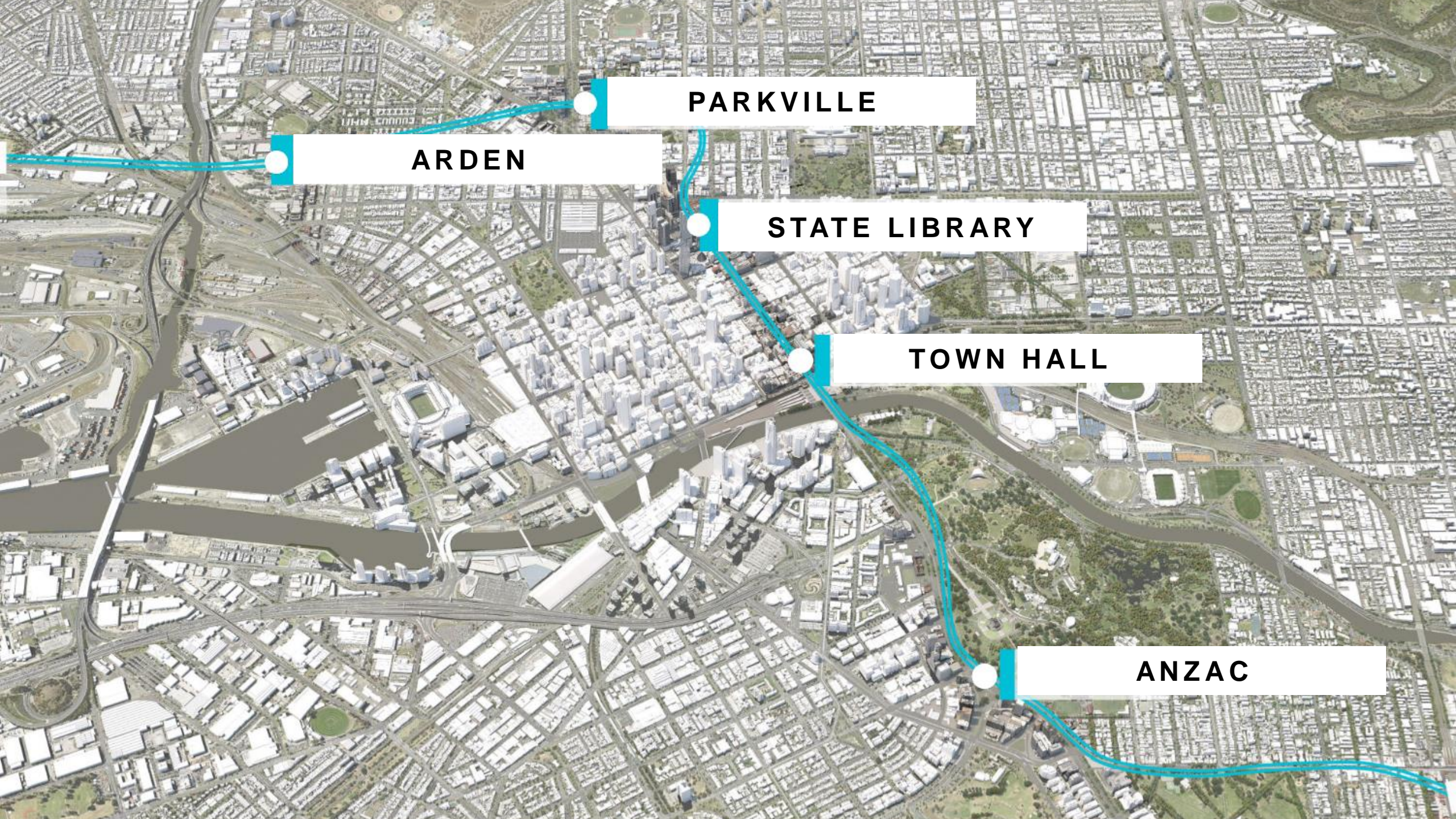


# AGENDA

1. Project overview
2. State Library Station update
3. General feedback and items for future discussion
4. Creative Program update

# PROJECT OVERVIEW





**ARDEN**

**PARKVILLE**

**STATE LIBRARY**

**TOWN HALL**

**ANZAC**

# TOWN HALL

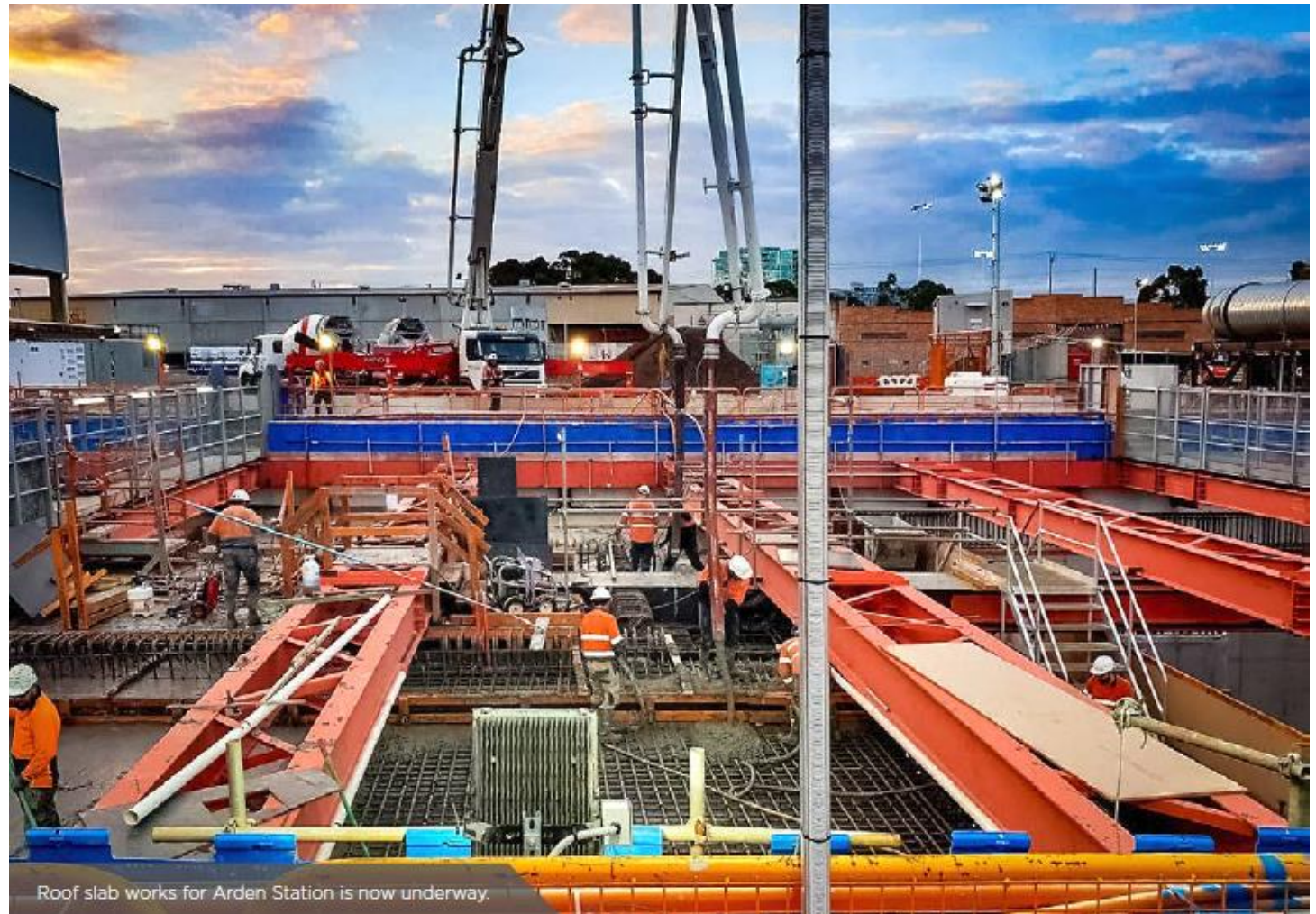


The complete length of Town Hall Station underground is now fully connected from Collins Street to Flinders Street and to Federation Square, following the recent roadheader breakthrough.

# ARDEN

At Arden Station, the first concrete pour of the suspended roof slab is now complete, an exciting milestone marking the start of construction of the station roof.

The 600 cubic metre pour was the first of 11 roof slab pours that will be completed between now and April next year.



# PARKVILLE

The next phase of construction at Parkville has begun with the commencement of piling works at Grattan Street west for the station entrance adjacent to the Peter MacCallum Cancer Centre.

At the Grattan Street east site, the station base slab is now complete. This pour required over 8,000 cubic metres of concrete and 2500 tonnes of steel reinforcement.



Grattan Street West



# ANZAC

The two TBMs working in the East, Alice and Millie, are making significant progress on their way to the Eastern Portal in South Yarra.

Both TBMs are now installing permanent segments.



# STATE LIBRARY STATION UPDATE





Architectural concrete elements ongoing

288 lineal metres of tie beam constructed

Future Melbourne Central passenger connection

47/50 steel columns installed



Rail tunnel excavation 15 Metres complete (travelling north)

Future State Library Station entrance ▲

Future mechanical and electrical ●

STATE LIBRARY PROGRESS VIDEO >>>





**A'BECKETT AND FRANKLIN EAST**



## **A'Beckett Street site**

Tunnelling works

- 24/7

Excavation using roadheaders commenced on either side of the central cavern. These works will enable the construction of the station's trinocular cavern.

## **Franklin Street East site**

Tunnelling works

- 24/7

The Franklin Street East site is continuing construction of the underground station platform, this involves delivery of steel and concrete to the site using trucks.



## FRANKLIN STREET WEST UPDATE



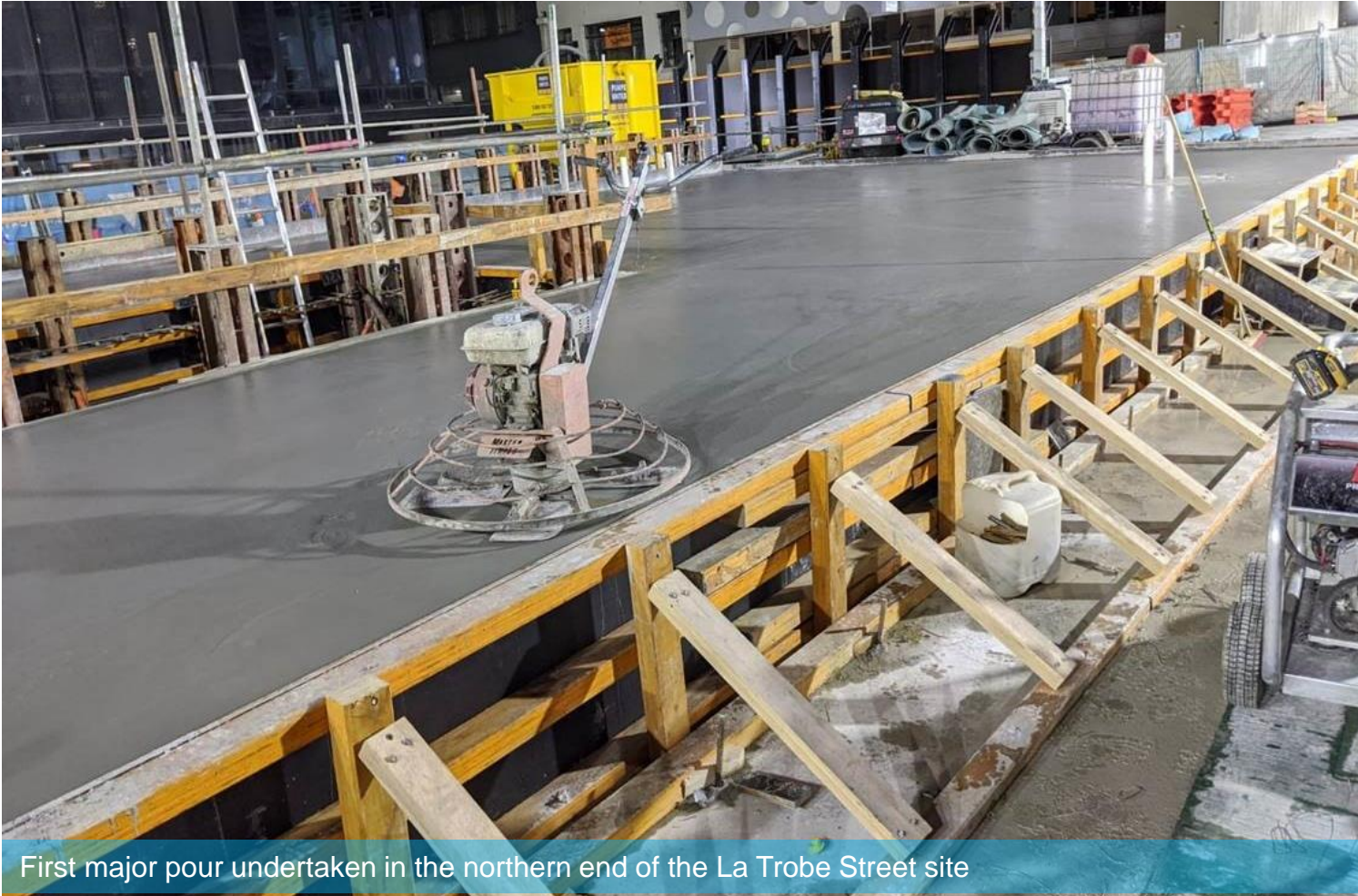
# FRANKLIN STREET WEST SITE UPDATE

Activity	Location	July	August	September	October	November	December
Shaft construction	Site	●			●	●	
Tunnelling support works and commencement of permanent structure build	Site		●	●			



## LA TROBE STREET UPDATE

# METROTUNNEL LA TROBE SITE CONTINUOUS CONCRETE POURS



First major pour undertaken in the northern end of the La Trobe Street site

Almost 700 cubic metres of concrete has now been poured at the La Trobe Street site.

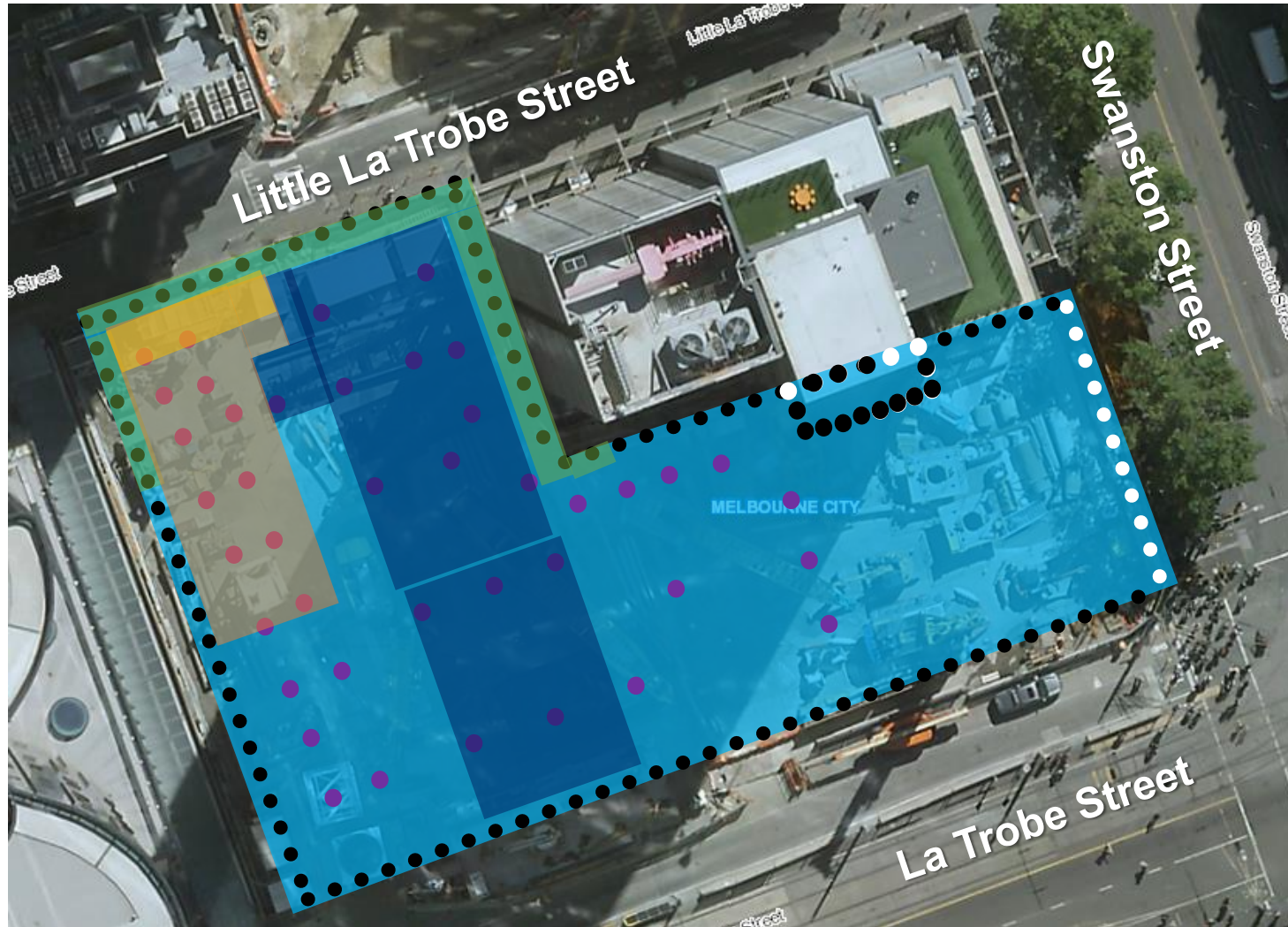
# LA TROBE STREET SITE UPDATE

Activity	Location	July	August	September	October	November	December	
Perimeter piling and plunge column installation	Site	—————●						
Swanston Street concrete pump installation	Swanston Street	—————●						
Pile trimming	Site	—————●						
Slab works	Site	—————●						
Shaft excavation	Site	—————●						

Concrete pour Monday 27 July

Four remaining continuous concrete pours

# LA TROBE SITE PROGRESS



## Perimeter piling

- 161 of 172 complete ●

## Plunge columns

- 44 of 56 complete ●

## La Trobe site



## Pile trimming



## Excavation



## Slab poured



## Reo installation



# LA TROBE STREET SITE HOURS

## **Piling and plunge column installation**

- Monday to Fridays, 7am to 10pm
- Saturdays 7am to 6pm
- Sundays 9am to 6pm

## **Oversized deliveries**

- 10pm to 7am, as required

## **Concrete pour**

- Monday 27 July, 7am to 10pm
- *Concrete finishing works may continue from 10pm to 6am as required*
- *During these works there will be traffic changes on Little La Trobe Street*



**LITTLE LA TROBE STREET UPDATE**

# LITTLE LA TROBE STREET SITE UPDATE

Activity	July	August	September	October	November	December
Tower Crane installation		●——●				
Pedestrian link and site shed installation			●————●			
Concrete pours	●——●					
Preparatory slab and excavation works	●—————					

Excavation commences



## **Preparatory ground floor slab works**

- Monday to Saturdays, 7am to 6pm

## **Concrete pours and minor works**

- Monday to Fridays, 6pm to 10pm
- Sundays, 9am to 6pm

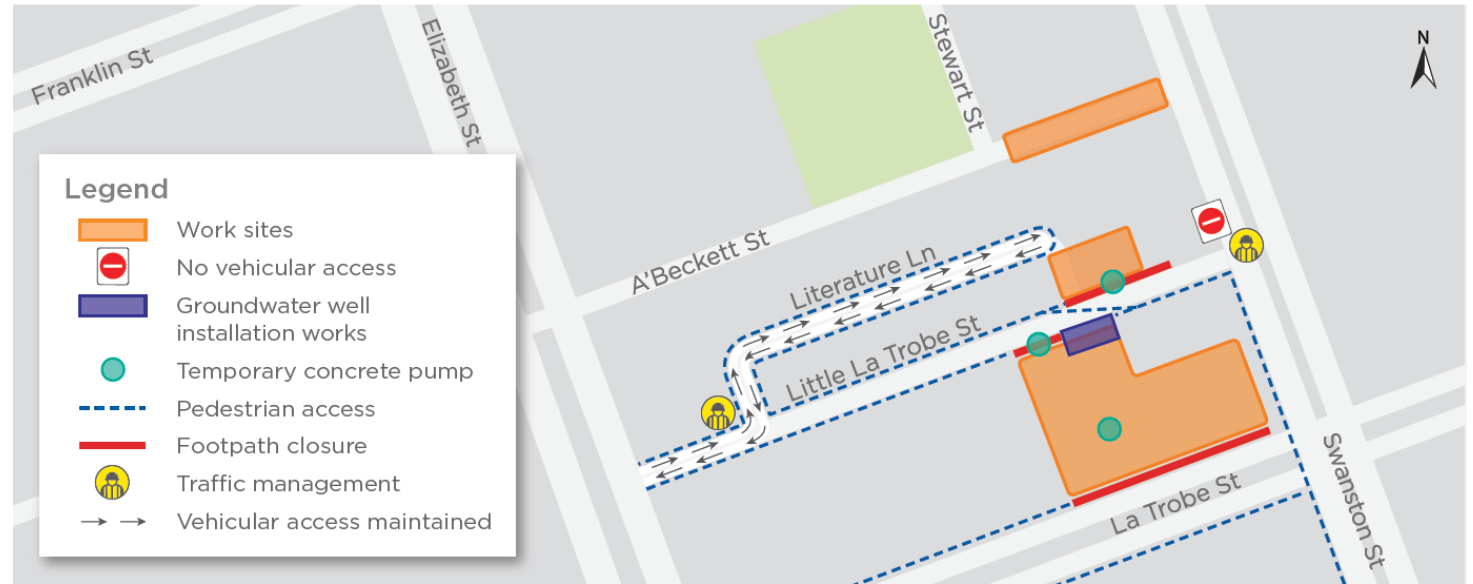
## **Continuous concrete pours**

- Tuesday 21 July, 7am to 10pm
- Thursday 30 July, 7am to 10pm
- *During these works there will be traffic changes on Little La Trobe Street*

# LITTLE LA TROBE STREET GROUNDWATER WELL

## Groundwater well installation

- 8am to 6pm, Sunday 19 July
- 7am to 6pm, Monday 20 July



Indicative only

# QUESTIONS?



# CREATIVE PROGRAM UPDATE

