



# TOWN HALL STATION COMMUNITY REFERENCE GROUP

CROSS YARRA PARTNERSHIP D&C

**Jodie Barrington**, CBD Stakeholder Engagement Lead, CYP D&C

**Blythe Chidgey**, Town Hall Station Stakeholder Engagement Manager, CYP D&C

8 October 2021



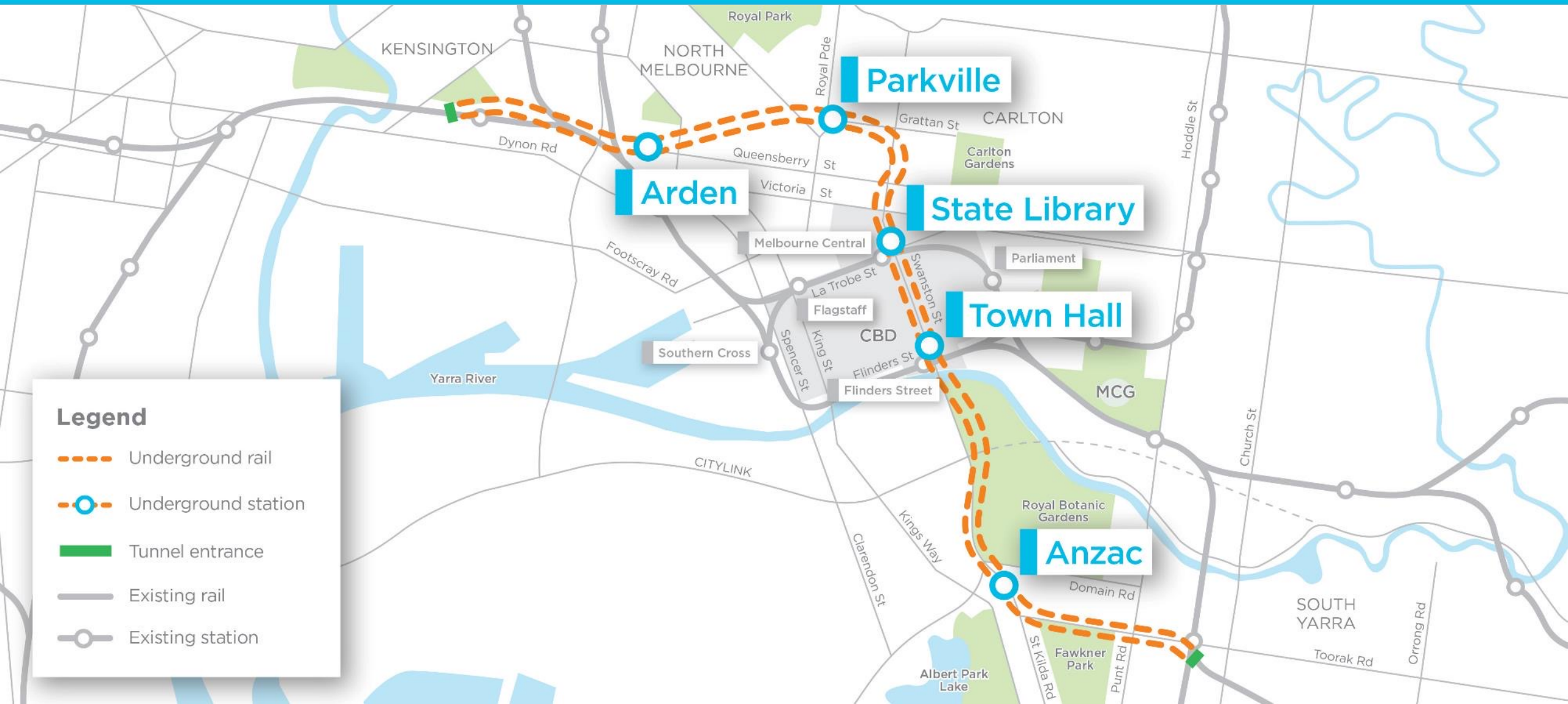
1. Project Overview
2. Town Hall Station Update
3. City Square Station Entrance Build Out Lookahead



# Precinct Updates

# Metro Tunnel Project

## Project Alignment



### Legend

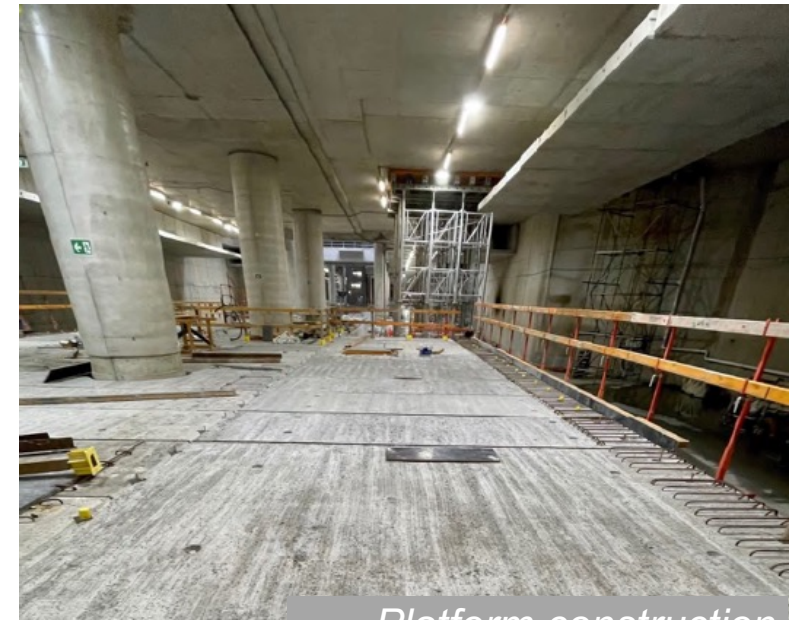
- Underground rail
- Underground station
- Tunnel entrance
- Existing rail
- Existing station



- Over track exhaust precast panels almost completed
- Topping slab construction for platforms continues
- Brackets being bolted into tunnel as part of rail tunnel fit out works
- Support falsework for station entrance arch installation continues
- Arches to begin arriving to site for installation this month.



*Bracket installation*



*Platform construction*

# PARKVILLE



- Station permanent structure works ongoing, including installation of over-track exhaust, platform, roof slab and internal wall construction, and service installation
- East and west tunnel ventilation shaft construction is ongoing
- Excavation for the western station entrances is nearing completion
- Preparatory works for construction of the Royal Parade underpass has commenced.



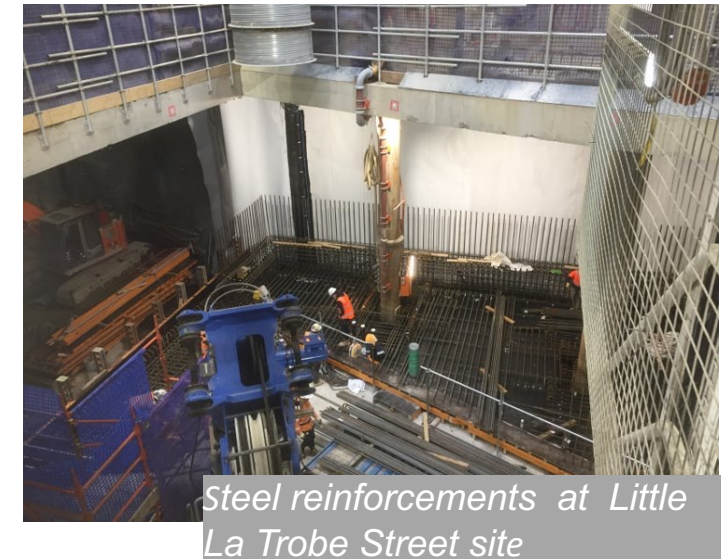
*Excavation of the Grattan Street west station entrance*



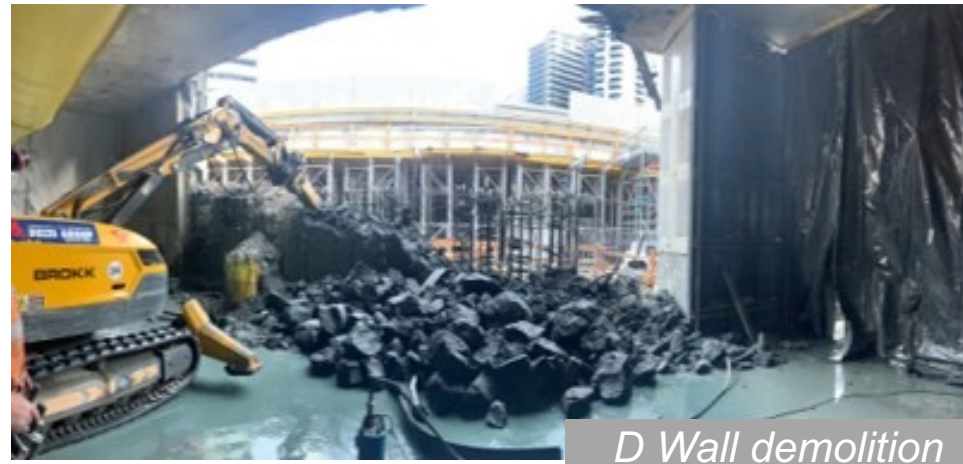
*Over-track exhaust installation and platform wall construction*



- Shaft construction is continuing at the La Trobe Street site
- At Little La Trobe Street site, pile demolition is now complete until 2022, with the major B3 slab pour scheduled for next week
- Underneath Swanston Street, waterproofing and reinforcements are being continually installed along the platform rail tunnels and central cavern arch.



- D-wall demolition continues between station entrances and concourse level of station box
- Base slab construction at platform level continues
- Core walls being constructed at platform and concourse level
- Blockwork walls and doorframes being installed at concourse level





# Town Hall Station Update



# FLINDERS QUARTER





## Standard Hours

### **Monday – Friday**

7am – 6pm

Saturdays – 7am – 1pm

## Out of Hours

### **Monday - Friday**

5am – 7am

Deliveries and spoil removal

### **Monday - Friday**

6pm – 12am

Excavation hammering until 12am

Spoil removal until 12am

Steel fixing, formwork and other low-level noise activities

### **Saturdays**

8pm – 6pm

Excavation hammering

Spoil removal

Steel fixing and formwork

### **Sundays**

8am – 6pm

Steel fixing and formwork

Other low-level noise activities



# FLINDERS LINK



ACTIVITY	OCT	NOV	DEC	JAN '22	FEB '22
Roof Construction					
Waterproofing and protection slab					
Backfill works (including strut removal and utility installation)					
Hoarding realignment works					

Commencing in Q1





*TBM Shield  
being concreted in to form  
part of the tunnel lining*





*Trinocular cavern design  
taking shape under  
Swanston Street*



# FEDERATION SQUARE



ACTIVITY	OCT	NOV	DEC	JAN '22	FEB '22
Tunnelling support works (excavated material removal)					
Tram pole relocation					
Pedestrian ramp construction					
Roadheader demobilisation					

# City Square Station Entrance Build Out Lookahead

# CITY SQUARE STATION ENTRANCE BUILD OUT



The site at City Square will be a new entrance to Town Hall Station

Excavation is now complete within the City Square shaft.

The next stage of works includes the continuation of the bottom up build out of the station entrance.

To facilitate these works the existing acoustic shed and deck will be removed once the build out reaches Basement Level 2

The deck currently allows the site to be serviced by trucks travelling from the Collins Street gate through the site and out the Flinders Lane gate

Once removed trucks will no longer be able to navigate through the site



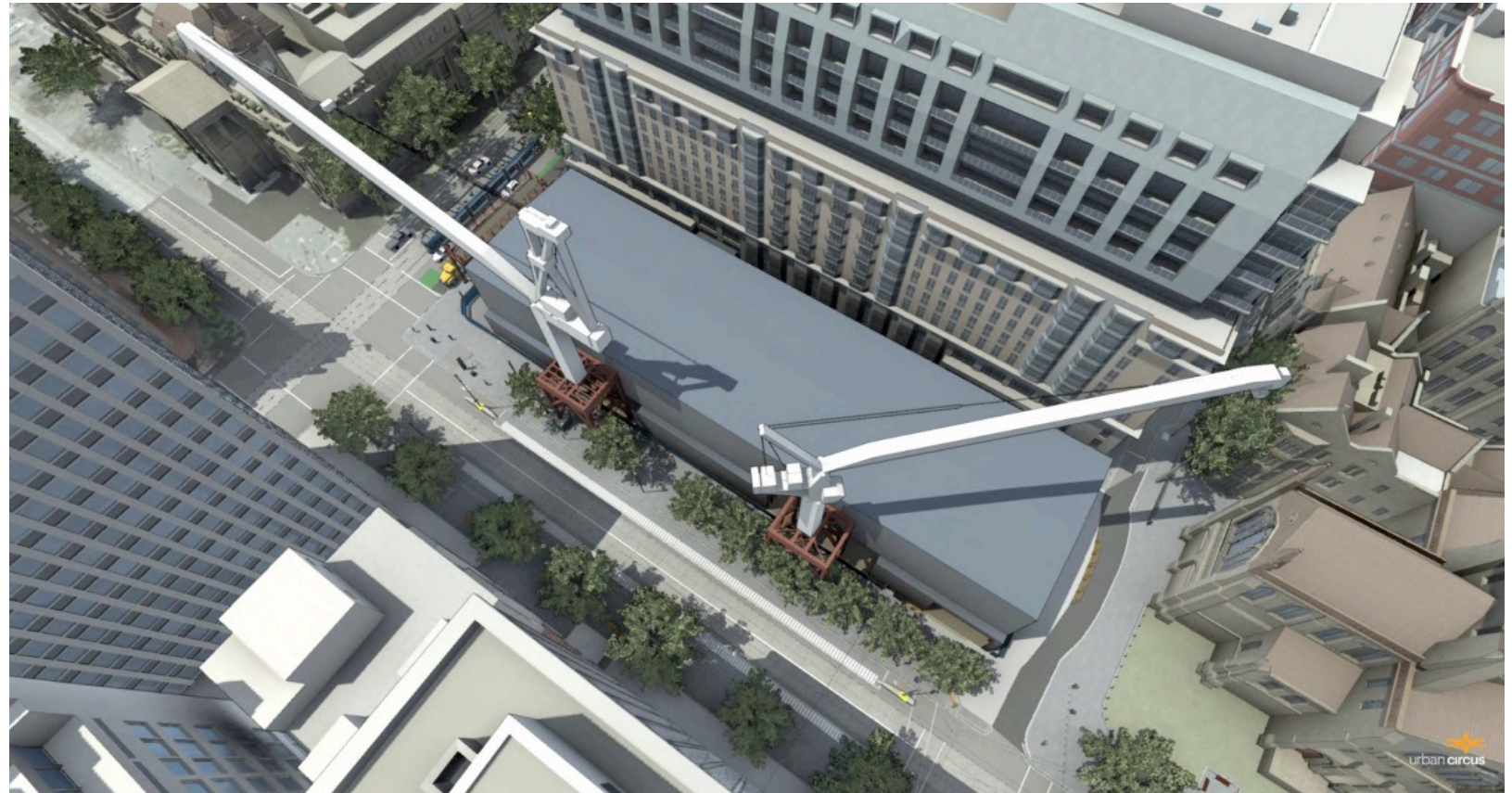
# OVERVIEW



To facilitate the removal of the shed and deck, infrastructure will be installed outside of the hoarding line

This infrastructure is also required to service the City Square site throughout the building stage of the works and includes:

- A concrete pump on Collins Street
- A loading bay on Collins Street
- A gantry over Collins Street footpath
- Reactivation of the loading bay and concrete pump on Flinders Lane
- Two tower cranes on the Swanston Street footpath





# SHORT TERM TRAFFIC AND PEDESTRIAN IMPACTS



A concrete pump, overhead gantry and loading bay will be installed on Collins Street in March 2022

Short term overnight closures of westbound Collins Street traffic lane and footpath

Short term overnight closures of Collins Street and Swanston Street intersection

Short term closures and narrowing of Swanston Street footpath

Temporary weekend closure of the Collins St/ Swanston Street tram stop

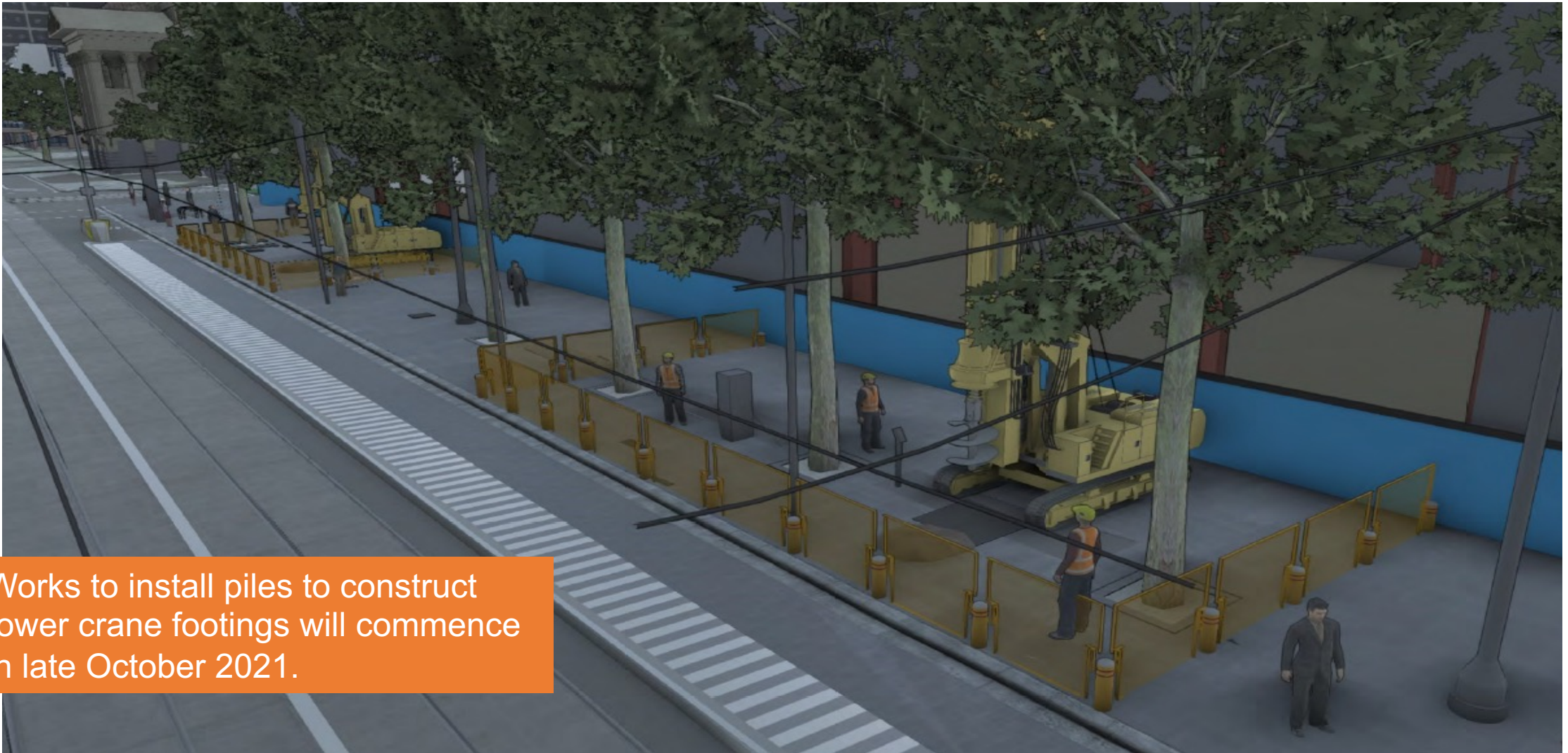
*(Where possible noisy works will be scheduled for day shift)*

# PILING FOR CRANE FOOTINGS

October 2021



Works to install piles to construct tower crane footings will commence in late October 2021.





# SOUTH TOWER CRANE CONSTRUCTION

February 2022



Works to construct the tower cranes will take place in February 2022

*Since the production of artists impressions there has been a change to methodology and the north crane will now build the south crane with a mobile crane parked on Swanston Street near Collins Street*



# NORTH TOWER CRANE CONSTRUCTION

February 2022



The northern tower crane will be constructed first, using a mobile crane parked on Swanston Street. It will then build the southern crane

*Since the production of artists impressions there has been a change to methodology and the north crane will now build the south crane with a mobile crane parked on Swanston Street near Collins Street*

# SWANSTON STREET

Looking south



Gantries will be installed above the footpath on Swanston Street during the first quarter of 2022. This will ensure pedestrians and tram customers can continue to move through the area



# SWANSTON STREET

Looking north-east



The loading bay on Flinders Lane will be reactivated and a portable concrete pump will be installed



# REMOVAL OF ACOUSTIC SHED



Tower cranes will utilise loading bays on both and north and south ends of the site until Q3 2023

# INDICATIVE TIMELINE



Timing	Activity
Oct 2021	Preliminary site works (service investigations/minor relocations, tram shelter removal)
Oct - Nov 2021	Tower crane piling and footing works on Swanston Street footpath Modifications to Swanston/Collins Street intersection in preparation for loading bay and concrete pump installation on Collins Street
Jan - March 2022	Two tower cranes installed on Swanston Street in front of the Westin Hotel Northern crane installed first, so it can build the southern crane.
March 2022	Overhead gantry installation on Collins Street Commence use of loading and concrete bays on Collins Street
April - July 2022	Removal of acoustic shed and temporary deck
July 2023	Internal City Square entrance structure complete
Q3 2023	Decommission tower cranes
December 2023	Overall completion of civil, structural and architectural works

*Timing represented is indicative only and subject to change*



# QUESTIONS