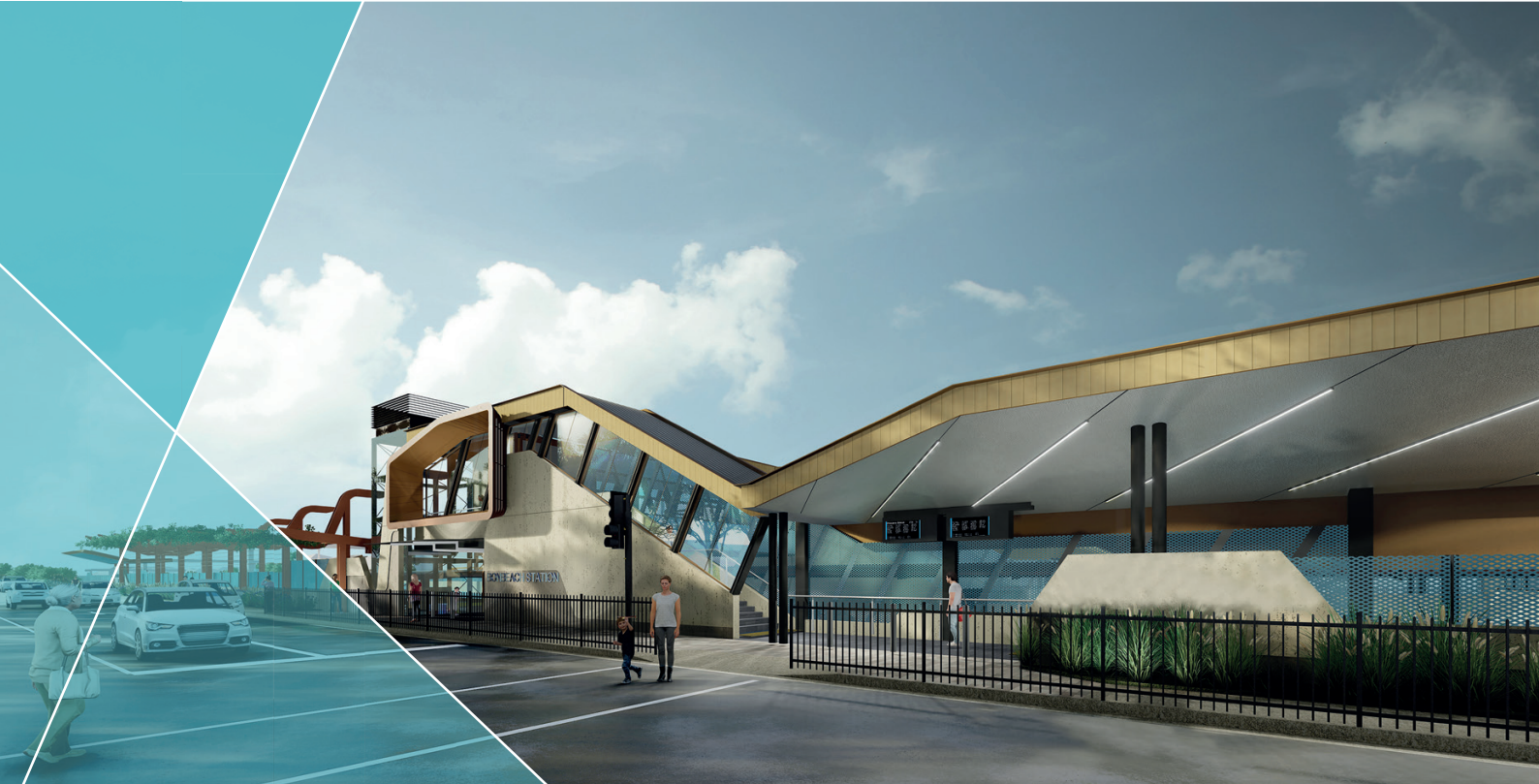


TREES AND LANDSCAPING



More than 50 different species of trees, plants and shrubs will be planted across Bonbeach

What's growing in Bonbeach's new precinct

The Victorian Government is removing 20 level crossings and building 13 new stations as part of a \$3 billion upgrade along the Frankston line that will improve safety, reduce congestion and allow more trains to run more often.

As part of works on the new Bonbeach Station, we will plant more than 230 trees and 22,000 shrubs, groundcovers and grasses along the rail corridor and across the new station precinct.

Locals asked for a combination of native trees, shrubs, flowering plants and grasses to preserve the coastal, bayside look and feel of the suburb – something we heard was important to the community.

Based on this feedback, we've carefully selected more than 50 different species to be planted across the area. This includes indigenous and native varieties able to endure the local coastal conditions, such as strong winds, harsh sun and salt spray, while enhancing Bonbeach's ecological value.

We will begin planting in late 2021 to take advantage of the growth season, with planting continuing until 2022.

Your new Bonbeach precinct

- More than **230 trees** and **22,000 shrubs, groundcovers and grasses**
- More than **50 different species**
- Planting will start in **late 2021**



Tree planting

We will plant trees that reflect the local coastal identity of the area, with towering Eucalyptus trees providing shade and shelter in the warmer months.

Coastal banksia, Gippsland manna gum and diverse varieties of flowering gum trees will be highlighted in the Bonbeach Station precinct. We will also line the nearby

rail corridor with more coastal banksia and Queensland bottle trees, with various coastal species in the underbrush helping to create a vibrant, green appearance.

We'll plant the trees at different stages of maturity and sizes to better blend into the surrounding environment, however most will be younger vegetation to maximise rates of survival.



Mauve bottlebrush



Splender bottlebrush



Coastal banksia



Flowering gum



Yellow bloodwood



Drooping she-oak

Shrubs, groundcovers and grasses

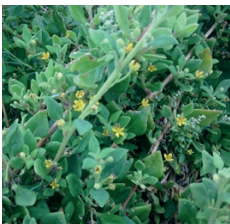
Groundcovers are plants, shrubs or grasses that grow over the surface of the ground and can help to prevent soil erosion and weeds.

Along the rail corridor, we will plant small groups of sugarwood and gumbi gumbi shrubs to enhance local biodiversity and invigorate the area.

We focused on providing a resilient, sustainable landscape by selecting drought-tolerant plants with low water usage and high growth performance.

Creating vibrant and welcoming stations

Passengers using the station will be greeted by bright, flowering wonga wonga vines that will wrap around and float off entrance arbours.



Bower spinach



Guinea-flower



Slender velvet bush



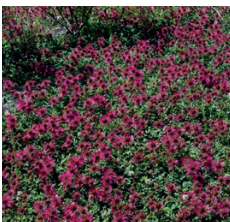
Climbing lignum



Prickly spear-grass



Silver cassia



Bidgee-widgee



Yellow buttons



Silver banksia



Sea box



Coastal boobialla



Wonga wonga vine

CONTACT US

contact@levelcrossings.vic.gov.au
1800 105 105
Level Crossing Removal Project
GPO Box 2392, Melbourne VIC 3001

Follow us on social media
@levelcrossings



Translation service – For languages other than English, please call 9209 0147.

Please contact us if you would like this information in an accessible format.

If you need assistance because of a hearing or speech impairment, please visit relay.service.gov.au