



DOMAIN PRECINCT
COMMUNITY REFERENCE GROUP

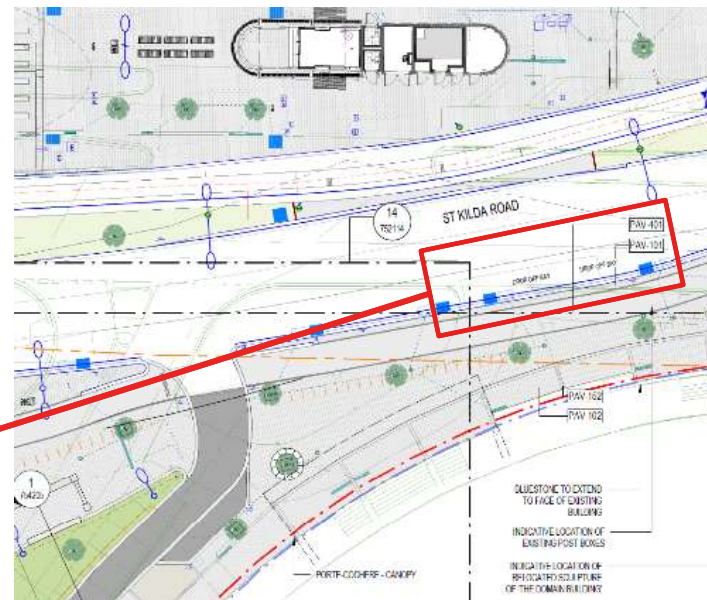
03 AUGUST 2022



ACTION: MINOR DEVELOPMENT PLAN AMENDMENT

DOMAIN DEVELOPMENT PLAN

RAIL REPLACEMENT BUS BAY



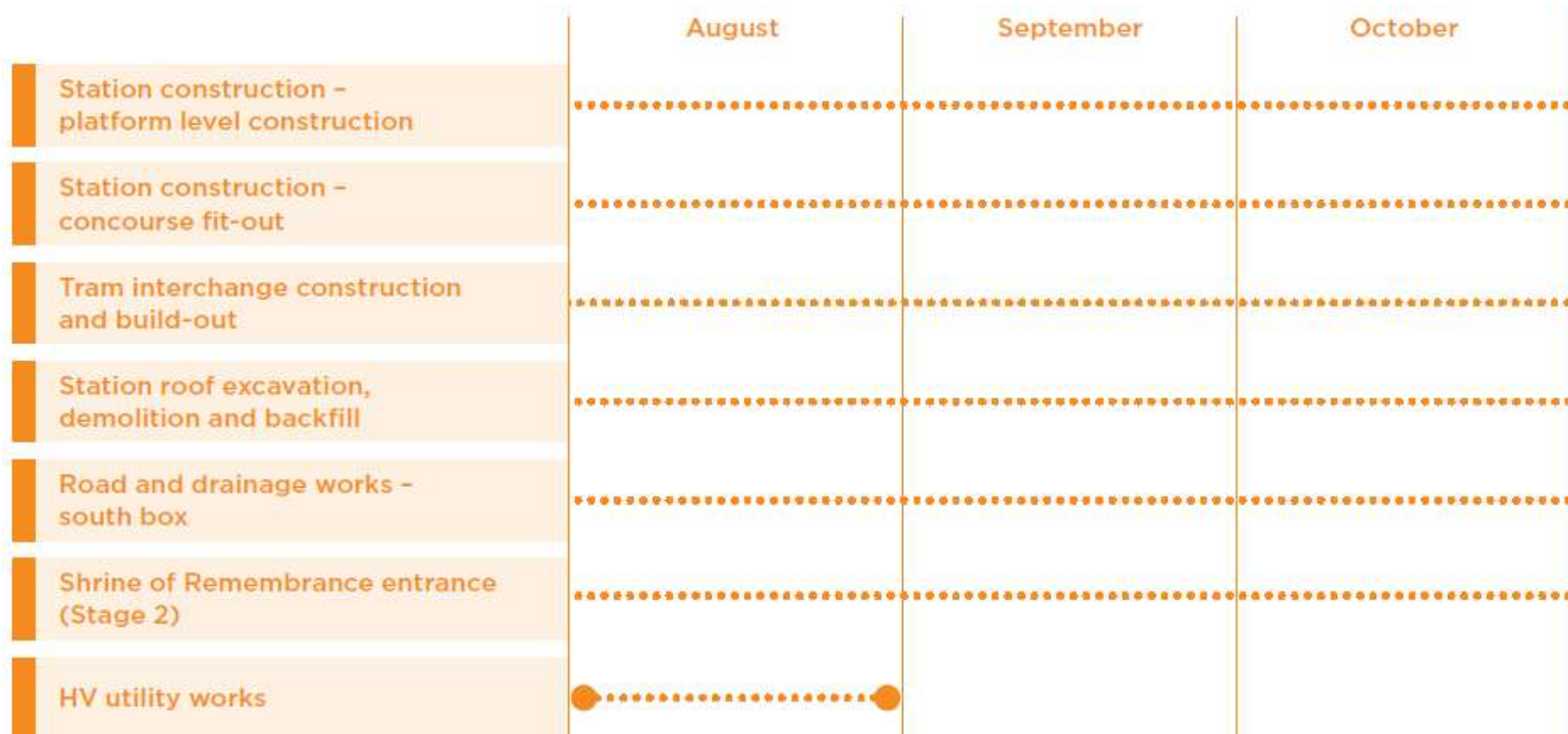
- Rail replacement bus bay relocated from Albert Reserve onto St Kilda Road
- Allocation of parking to be determined in consultation with City of Port Phillip



WORKS UPDATE: LOOKAHEAD

WORKS UPDATE

2022 LOOK AHEAD





WORKS UPDATE: STATION CONSTRUCTION

WORKS UPDATE

ANZAC STATION AERIAL



WORKS UPDATE

TRAM INTERCHANGE



- The cross laminated timber installation and installation of wet fire services is now complete
- The team are in the process of installing the skylights in the roof
- Roofing panels will now be installed around the skylights
- The installation of precast concrete for the tram platform kiosk is now complete
- The team will now proceed with the installation of services underneath the future tram platform



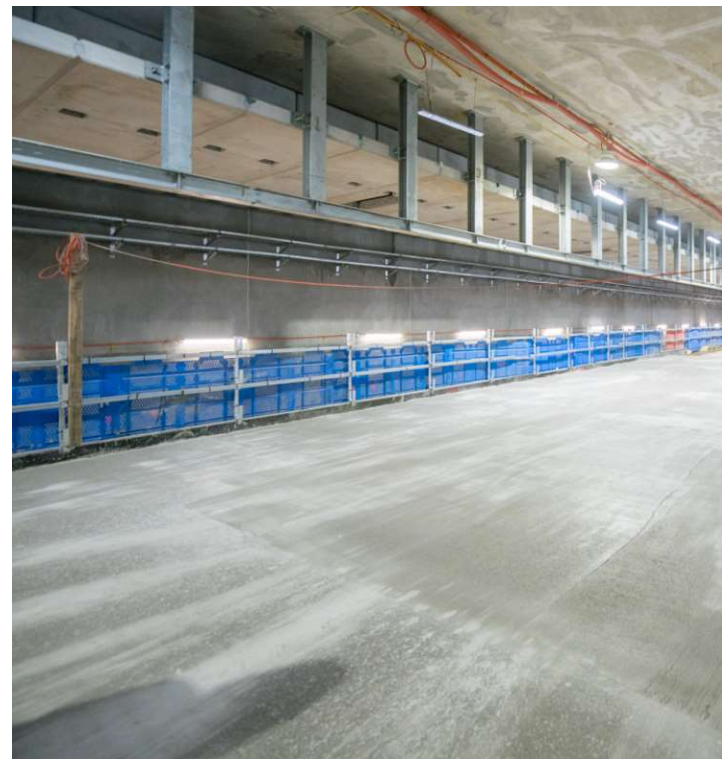
Tram interchange canopy progress

WORKS UPDATE

PLATFORM LEVEL



- Precast concrete segment is continuing from north to South, with the first concrete pour for the topping slab also completed
- The southern emergency stairs from the platform up to concourse are now complete
- The northern emergency stairs are now being installed
- The team are progressing with the installation of services underneath the completed sections of platform



Platform concrete topping slabs underway. Southern emergency stairs are now complete

WORKS UPDATE

CONCOURSE LEVEL



- Blockwork is continuing in the northern concourse level
- Works are well progressed on the ventilation systems at the southern most end of the station with all the fan systems now installed
- Substations for station power have also been delivered and installed in the southern section
- Focus is room completion and commencing handover to Rail Network Alliance (RNA)



Wet fire services, ventilation, fan systems and power substation installation

WORKS UPDATE

SURFACE WORKS STATUS

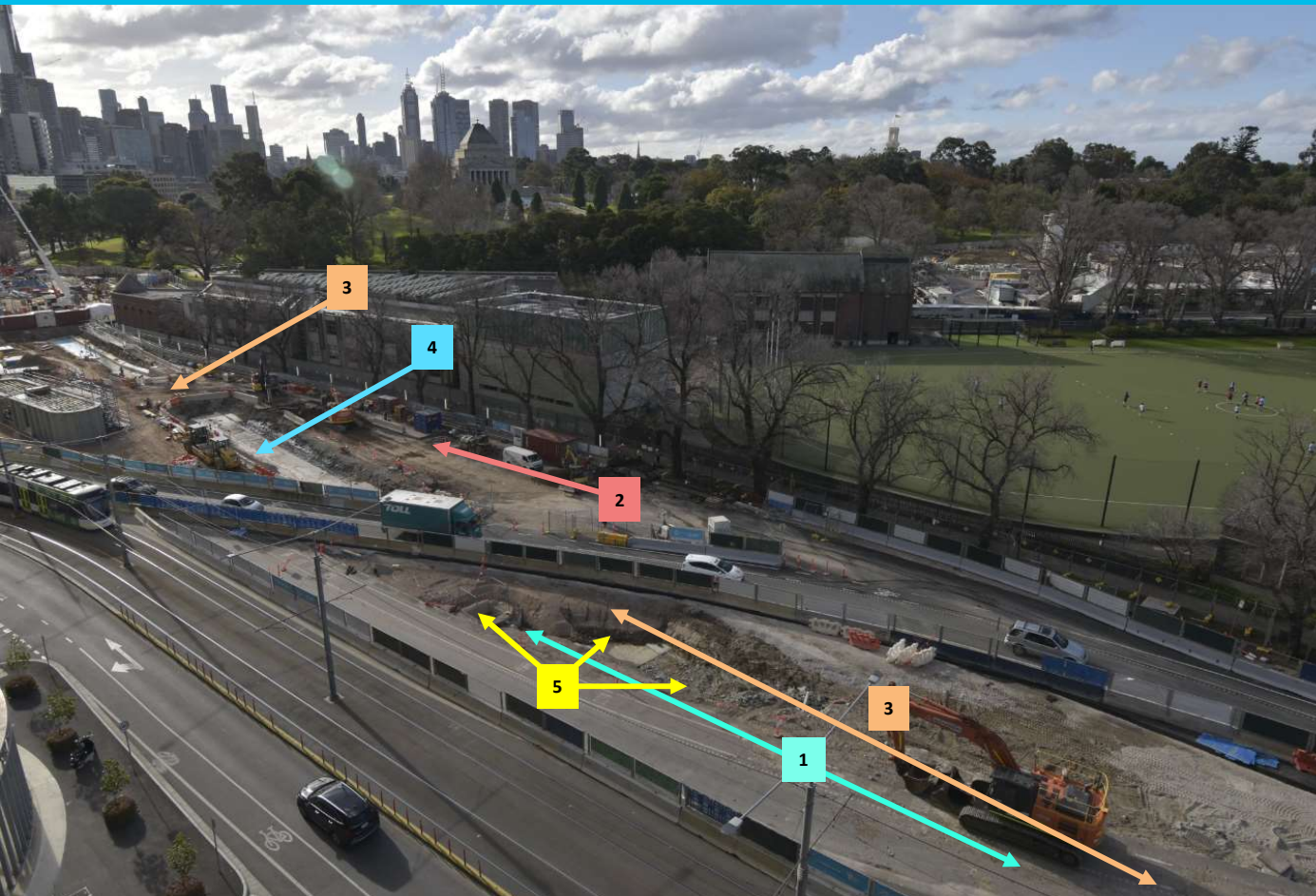


- Last week the switch of the south bound lane of St Kilda Road was completed
- This has allowed work to commence to complete the next section of D-wall removal, delayed pour strips and waterproofing
- Precast concrete installation for the southern vent shafts will also be done in in August and September
- Works are now underway to construct the new section of the south bound lane between Dorcas Street and Bromby Street



WORKS UPDATE

SURFACE WORKS STATUS

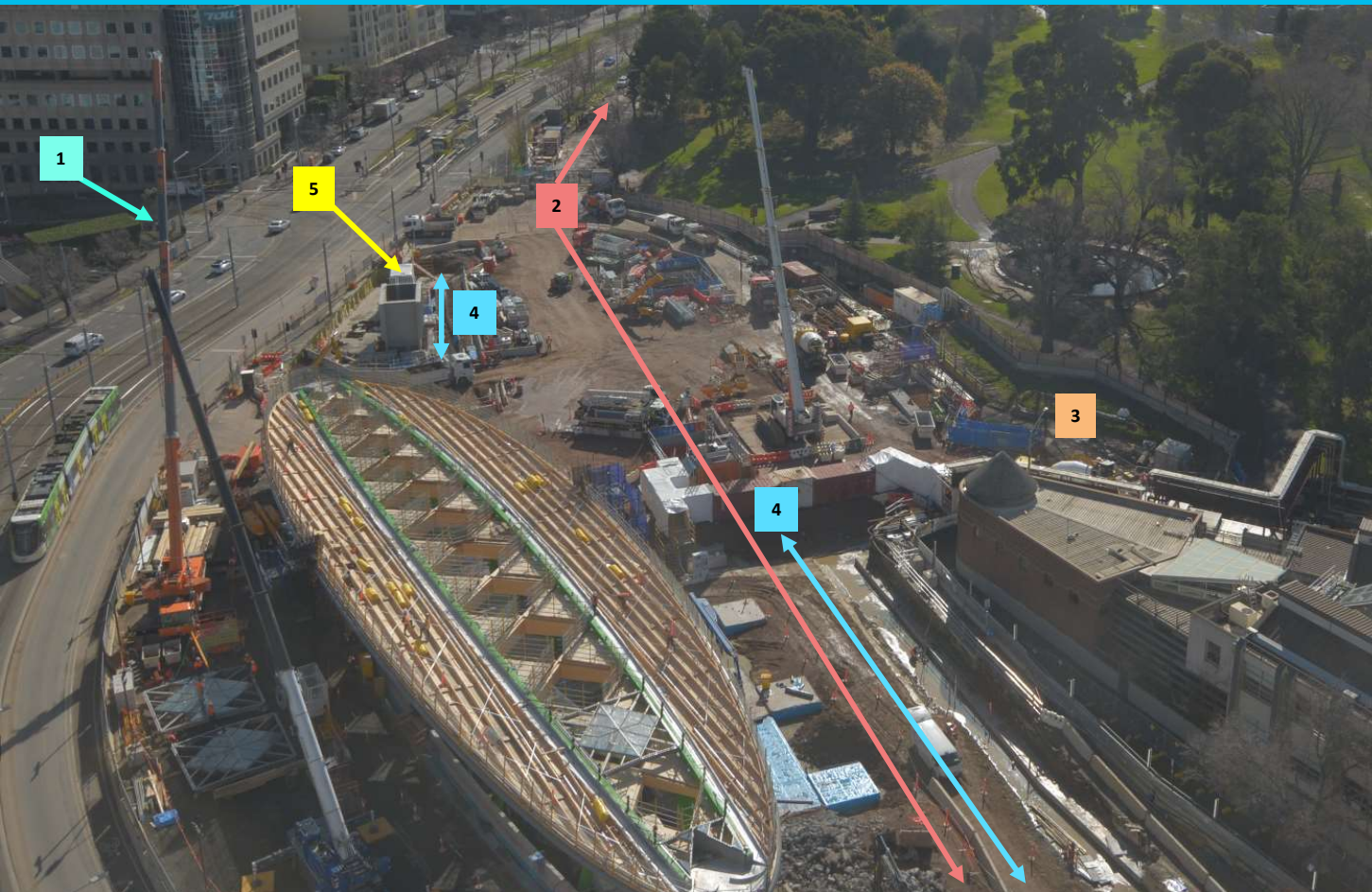


Upcoming Activities:

- 1 • Surface excavation
- 2 • Road preparation
- 3 • D-wall demolition
- 4 • Waterproofing/backfill
- 5 • Pre-cast concrete installation

WORKS UPDATE

SURFACE WORKS STATUS

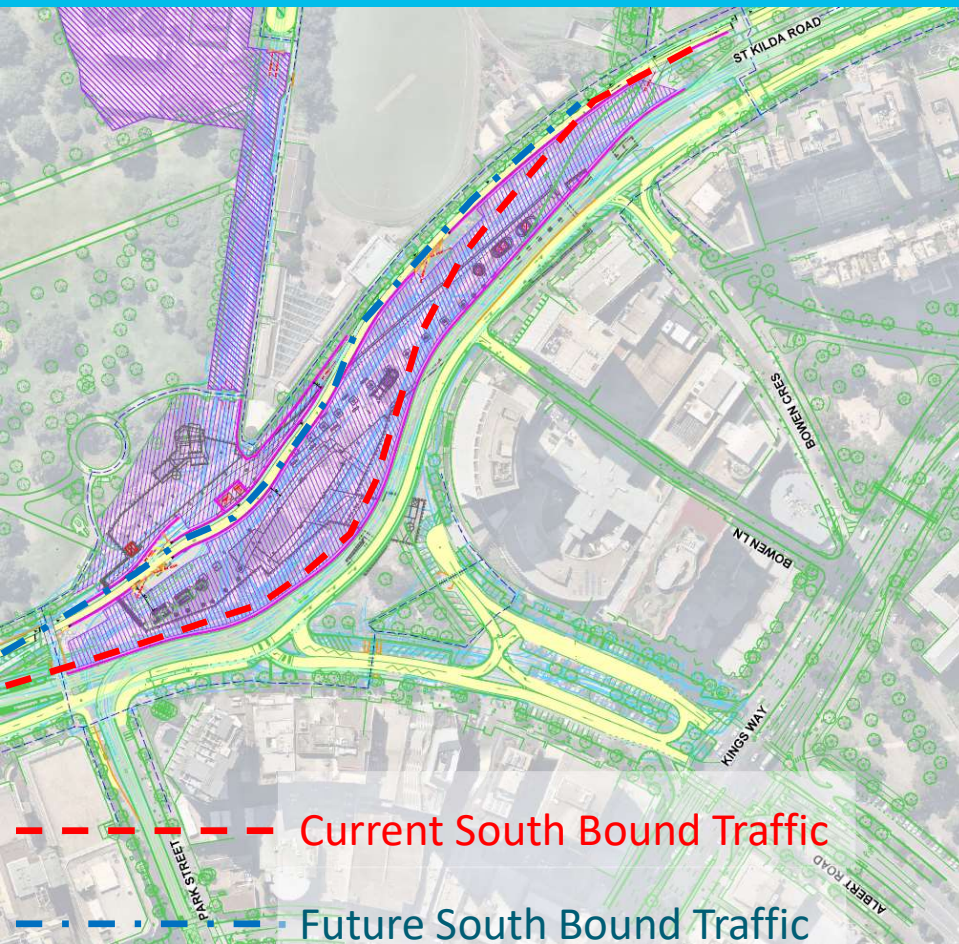


Upcoming Activities:

- 1 • High voltage cable tie-in works
- 2 • Road preparation
- 3 • Entrance piling
- 4 • Waterproofing/backfill
- 5 • Pre-cast concrete install

WORKS UPDATE

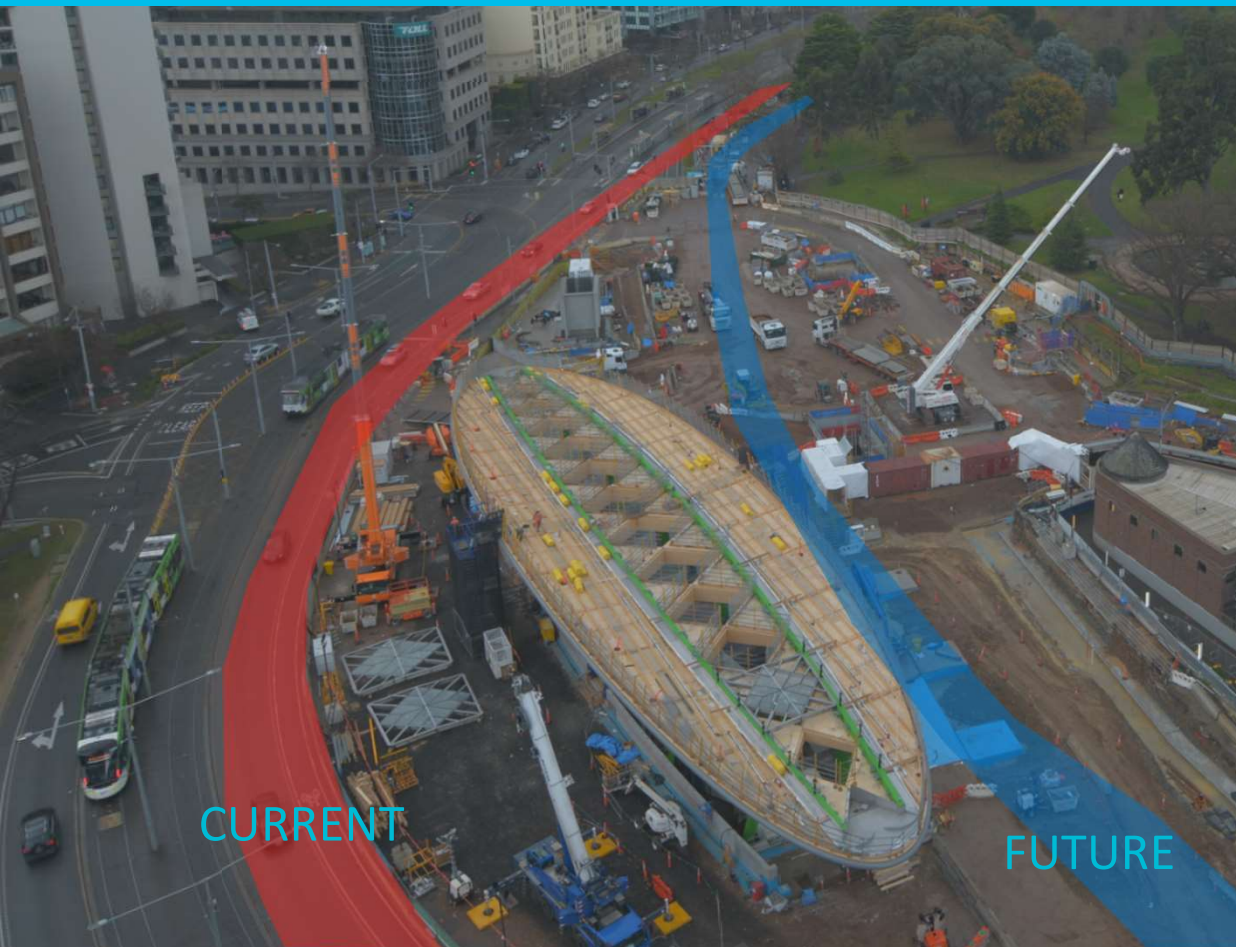
STAGE 2 SOUTH BOUND LANE SWITCH



- The next stage of roadworks on St Kilda Road is the construction of the new southbound lane on the eastern edge of the site
- This will happen approximately early October
- Switching traffic to this new lane will mean that the right turn from Park Street into St Kilda Road is no longer available
- This no-right turn will be in place for approximately 12 months

WORKS UPDATE

STAGE 2 SOUTH BOUND LANE SWITCH



- Switching southbound traffic onto the newly constructed lane creates the room for the project to construct the future tram works offline
- This approach minimises the amount of work required to be carried out during the 24/7 occupation later this year
- The 24/7 works are expected to commence in late November

ENVIRONMENT

ENVIRONMENT

Monitoring results – Overnight Road building and line marking



- Overnight road works were carried out on the southbound lane
- These works are similar activities to the roadworks expected to be carried out later in the year as part of the St Kilda Road realignment
- Asphalting the louder activity compared to line marking
- LAmax - 5dB differential from closest receiver (Botanica)

Road Works – Southbound lane 1hr LAeq (dB) (10pm-7am)		
<u>Receiver</u>	Wednesday 27 July (Road building)	Thursday 28 July (Line-marking)
Hallmark	50.4dB – 54.9dB	48.9dB – 54.3dB
Domain Hill	50.8dB – 56.3dB	47.5dB – 55.4dB
Domain	61.4dB – 70.1YdB	57dB - 69dB
Botanica	63.7dB – 68.7dB	58dB – 64.1dB



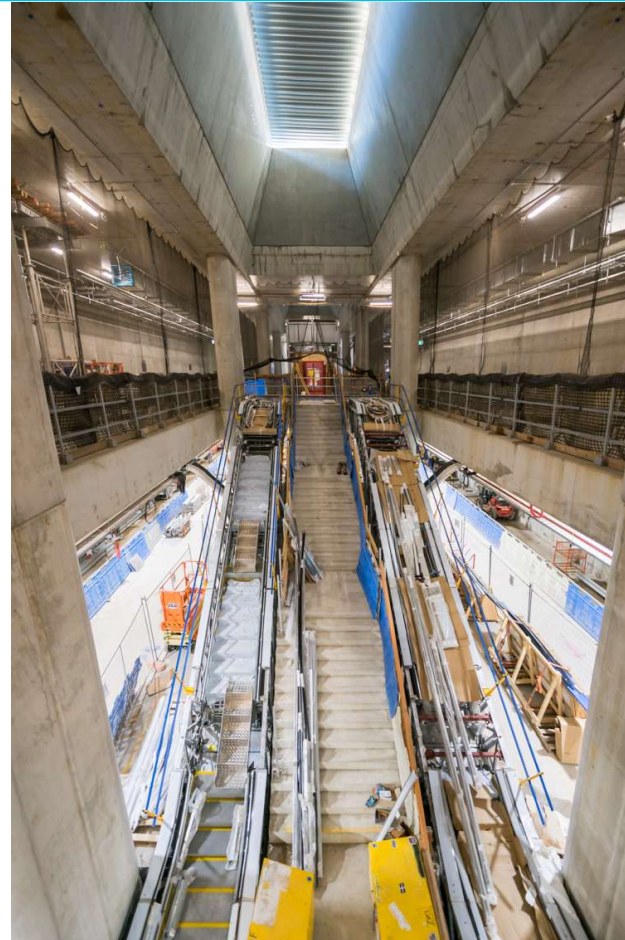
TUNNELS AND STATIONS PROJECT WIDE UPDATE

ARDEN STATION

Construction Update



- Installation of the precast brick cladding around the new station entrance is nearly complete
- Future skylights for the station are now installed
- Escalators are now installed linking the main station entrance down to the concourse level
- Works to break back the D-wall around the perimeter of the station are ongoing. This will also enable the waterproofing and final backfill above the station roof



*Escalators, Stairs, Skylight
Arden station*

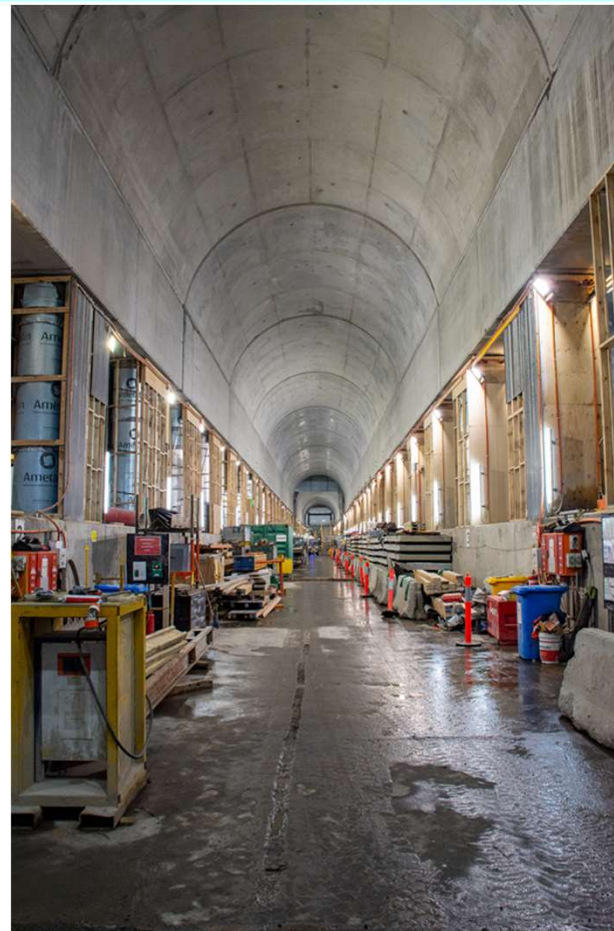
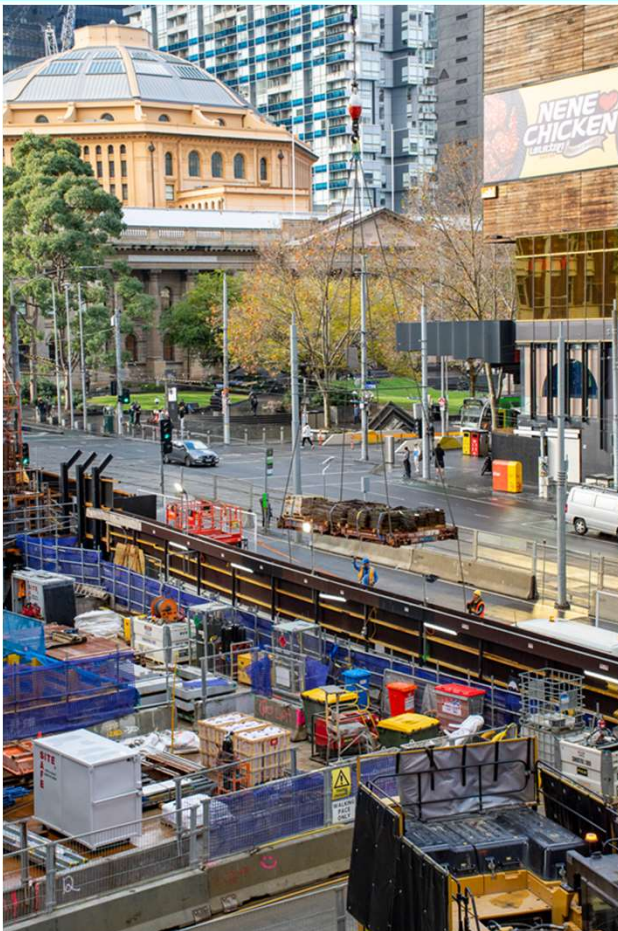
PARKVILLE STATION



- In the station box, architectural and mechanical, electrical and plumbing fit out works are ongoing
- In the station entrances next to the hospital, permanent structure works are ongoing
- In the Royal Parade underpass, all the walls have now been poured. Works have commenced to finish the ceiling
- All three gantry cranes have now been removed



STATE LIBRARY STATION



- CBD North Structures and Lining team recently completed the last cavern arch pour, which completes the permanent lining scope in the State Library Station cavern
- Shaft construction is continuing at the Franklin East, Franklin West, A'Beckett, La Trobe and Little La Trobe sites
- Passenger underpass construction continues below ground between Melbourne Central and the future State Library Station.

TOWN HALL



- Excavation at Flinders Quarter is due for completion mid-August
- First of two tower cranes is now operational on Swanston Street. The second tower crane will be installed from 26 July over three weeks
- Lining and structures works continuing within the station cavern, rail tunnels and adits
- The Degrafs Subway will close from 1 August for up to 2 years whilst lift installation works take place



EASTERN PORTAL



- Egress building construction is ongoing with the B1 slab pour now complete
- Rail Tunnel Fitout between Town Hall Station and Eastern Portal has commenced
- Installation of CCTV and lighting is underway within the South Yarra Siding Reserve
- Soft landscaping will soon commence in the sidings reserve, to bring the open space to life with a range of trees, plants etc.





CREATIVE PROGRAM UPDATE

ANZAC STATION LEGACY ARTIST

Raafat Ishak



Raafat Ishak was born in Egypt and lives and works in Melbourne. He has an undergraduate degree in fine arts from the Victorian College of the Arts, a post-graduate degree in architecture history and conservation practice from the University of Melbourne, and a PhD from Monash University.

Working across painting, sculpture, installation and site-specific drawing, Ishak's practice is informed by the history of painting and architecture. His practice is generated through ubiquitous acts of research, experimentation, withdrawal, exclusion and fatigue.

He has been awarded a number of Australia Council grants including residency at the Cite International des Arts in Paris in 2013. His work is held in many significant public and private collections.

He is a founding member of Ocular Lab Inc and is Head of Painting at the Victorian College of the Arts, University of Melbourne.



*For **Anzac Station**, the artwork will be located in the underground concourse connecting Albert Road Reserve and the Shrine Reserve..*

ARTISTS FOR OTHER STATIONS



**Abdul Abdullah – Arden
Station**



**Patricia Piccinini – Parkville
Station**



**Rafael Lozano-Hemmer –
Town Hall Station**



**Danie Mellor – State Library
Station**



DOG GROOMING ALBERT ROAD RESERVE

THANKS TO THOSE THAT ATTENDED SATURDAY 16 JULY

Dog grooming in Albert Road Reserve





UPCOMING ALBERT ROAD RESERVE ACTIVATIONS

JOIN US TO CELEBRATE THESE UPCOMING EVENTS

Albert Road Reserve



Red Nose Day

8am-12noon Friday 12 August 2022

Help us get silly and raise funds for a serious cause



Dog grooming by Shaggy Doo

8am-12noon Saturday 27 August 2022

Treat your pooch to a free trim, clip and deodorisation. First in, best trimmed!



RU OK Day

10am-12noon Friday 9 September 2022

Support your friends, family and colleagues with a simple question: are you okay?



International Talk like a Pirate Day

8am-10am Monday 19 September 2022

Ahoy there me hearties - won't you join us for a bit pirate fun?



THE ART OF BOTANICAL ILLUSTRATION

THE ART OF BOTANICAL ILLUSTRATION

Domain House



THE ART OF BOTANICAL ILLUSTRATION

Domain House



You are invited to join a private tour of The 16th Biennial Art of Botanical Illustration at 10am Wednesday 21 September by the Melbourne Friends of the Royal Botanic Gardens Victoria.

Please register your interest in attending via email by Friday 16 September to:
creativeprogram@metrounnelcyp-pco.com.au





QUESTIONS?