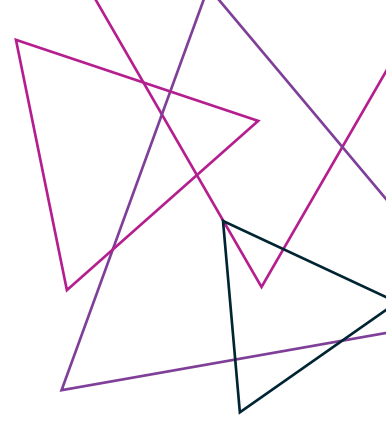




**REGIONAL  
RAIL REVIVAL**

GEELONG



# South Geelong to Waurin Ponds Duplication

## Removing the Surf Coast Highway level crossing

The South Geelong to Waurin Ponds Duplication will deliver more frequent and reliable services and better stations for passengers on Victoria's busiest regional rail line.

We are removing the dangerous and congested level crossing at Surf Coast Highway and replacing it with a new elevated rail bridge which will improve traffic flow and boost safety for road users.

As with any project of this scale, temporary construction impacts and disruptions will occur.

We aim to minimise impacts to passengers, residents and businesses wherever possible and will notify well in advance of works occurring.

We will undertake a staged approach to constructing the project, so that we can carry out works safely and minimise disruption as much as possible.



Surf Coast Highway concept image - aerial view



Australian Government



# Removing the Surf Coast Highway level crossing

1

## Relocation of services

We will relocate underground and overhead services such as gas, water and electricity on both sides of the rail line. Some vegetation removal will also be required.

2

## Strengthening the ground

48 concrete piles will be installed in the ground to support the concrete piers. A piling rig will bore holes in the ground and then steel cages are then lowered into the holes and filled with concrete.

3

## Building the substructure

Six pile caps, six piers and two bridge abutments will be built to support the future bridge beams. We will then install precast headstocks, which further support the bridge beams.

4

## Installing the viaduct beams

A total of 16 bridge beams will be installed. To ensure safety of construction crews and the community, some traffic management and road closures may be required.

5

## Laying the rail track

Ballast and sleepers will be installed on the new bridge, and rail laid on top. The top ballast is added before tamping and regulating of the new rail and ballast is completed.

6

## Creating the finishing touches

Landscaping, creative treatments and the installation of public artworks will take place once the rail track has been laid.

7

## Commissioning

Commissioning of the new duplicated track is required to integrate the new infrastructure into the rail network to enable additional services to run on the line.

8

## Surf Coast Highway level crossing removed late 2024

## Upgrading the Geelong Line

The Victorian and Australian governments are investing more than a billion dollars in projects to deliver better and more frequent services for communities between South Geelong and Warrnambool.

The South Geelong to Warrnambool Duplication project will enable more frequent services, upgrade South Geelong and Marshall stations and remove the dangerous and congested level crossings at Fyans Street and Surf Coast Highway.

The project is part of the Regional Rail Revival program which is upgrading every regional passenger line in Victoria and creating 3,000 jobs. Rail Projects Victoria is delivering the program on behalf of the Australian and Victorian governments.


## Keep informed

As the project progresses, we will keep passengers and the community informed.

To receive updates about the South Geelong to Warrnambool Duplication sign up to our eNews at [regionalrailrevival.vic.gov.au/geelong](https://regionalrailrevival.vic.gov.au/geelong) or follow us on Facebook [facebook.com/RRRGeelongWarrnambool](https://facebook.com/RRRGeelongWarrnambool)

## More information

 [regionalrailrevival.vic.gov.au](https://regionalrailrevival.vic.gov.au)

 1800 105 105  
(24 hours a day, 7 days a week)

Rail Projects Victoria  
PO Box 2392, Melbourne, VIC 3001



Interpreter Service (03) 9209 0147

It should be noted that this information is current at the time of printing, however due to unforeseen circumstances, changes may occur. Please visit [regionalrailrevival.vic.gov.au](https://regionalrailrevival.vic.gov.au) for the latest updates.