



TOWN HALL STATION COMMUNITY REFERENCE GROUP

CROSS YARRA PARTNERSHIP D&C

Kate Walshe, Communications and Stakeholder Engagement Director, CYP D&C
Blythe Chidgey, Town Hall Station Stakeholder Engagement Manager, CYP D&C

12 September 2022



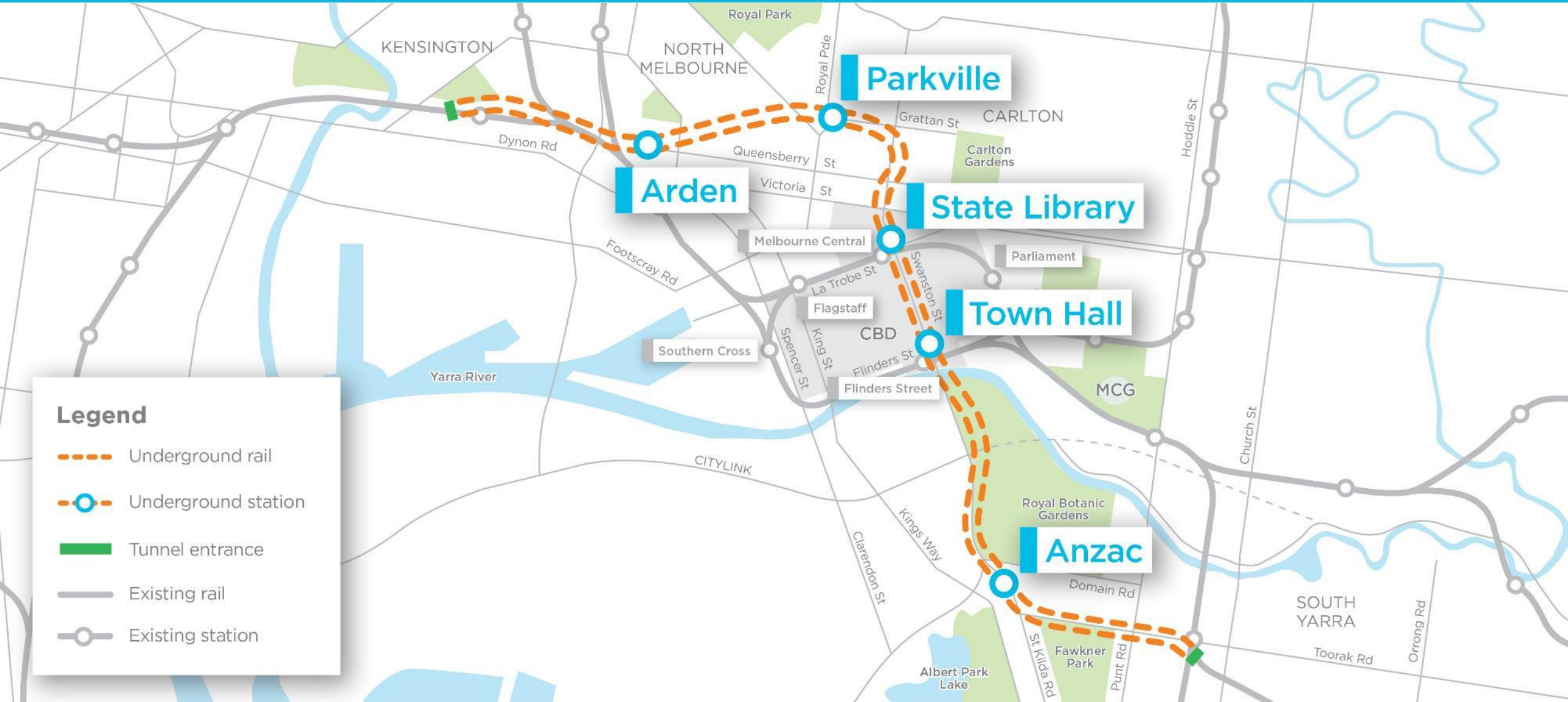
1. Precinct Updates
2. Town Hall Station Update



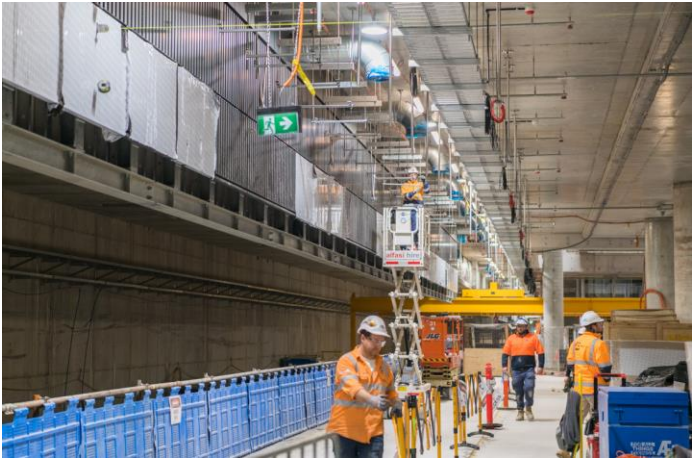
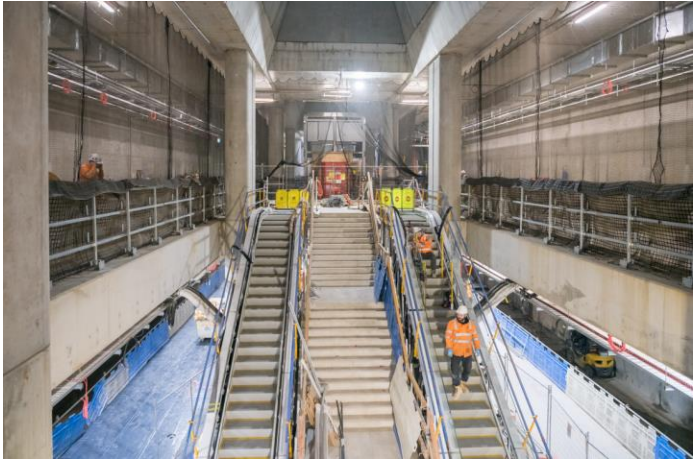
Precinct Updates

Metro Tunnel Project

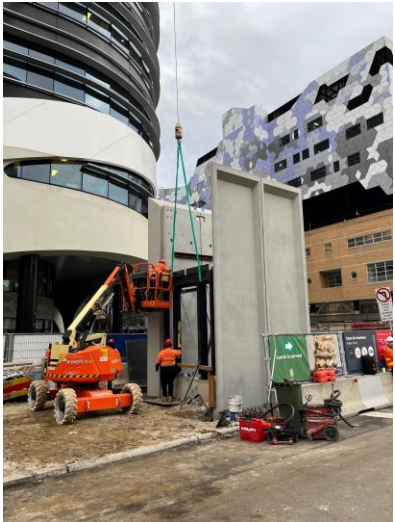
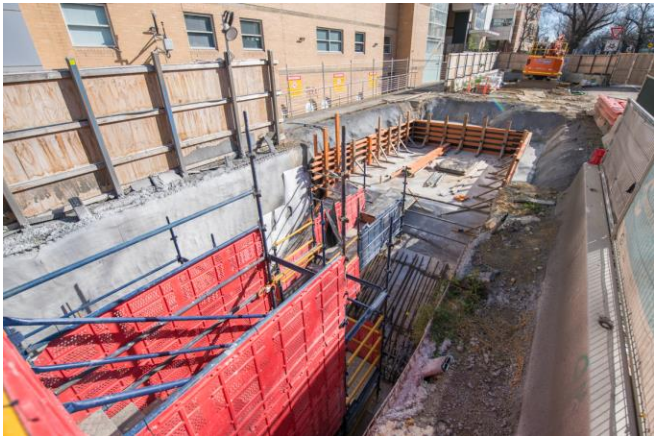
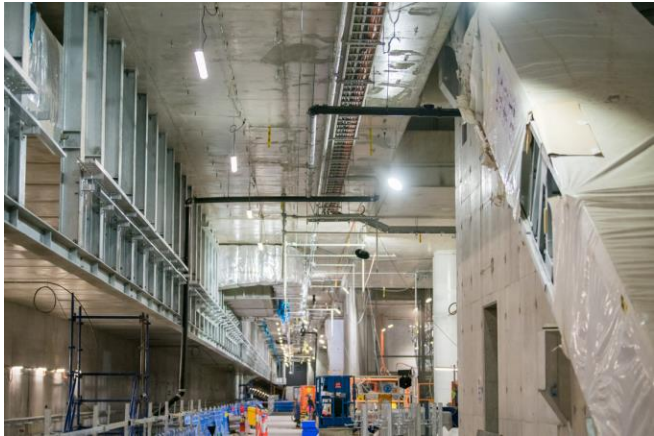
Project Alignment



Arden



Parkville



State Library



Domain – Anzac Station



Rail and Tunnel Fitout





Town Hall

Station Update

Flinders Quarter Site



Standard Hours

Monday – Friday

- 7am – 6pm

Saturday

- 7am – 1pm

Out of Hours

Monday – Friday

- 5am – 7am
- Deliveries

Monday – Friday

- 6pm – 1am
- Steel fixing, formwork, shotcreting (including use of concrete pump, concrete pours, waterproofing, tower crane use)

Saturdays

- 1pm – 6pm
- Steel fixing, shotcreting, concrete pours and formwork

Sundays

- 8am – 6pm
- Steel fixing, shotcreting, concrete pours and formwork

Milestone – Two Tower Cranes on Swanston Street



- 75 meters tall
- Sit above bespoke “catch decks” that ensure the safety of awaiting tram passengers and the up to 4000 pedestrians an hour who move through the area.
- Made up of just over 200 tonnes in total steel each crane has a lifting capacity of 56 tonnes
- Boom length of 46 metres or the length of around 1.5 E-Class trams
- The cranes will be in place for the next 18 months while they support the removal of the popular “rainbow shed”
- The two cranes will then work busily to support the continued build up and out of the City Square station entrance.

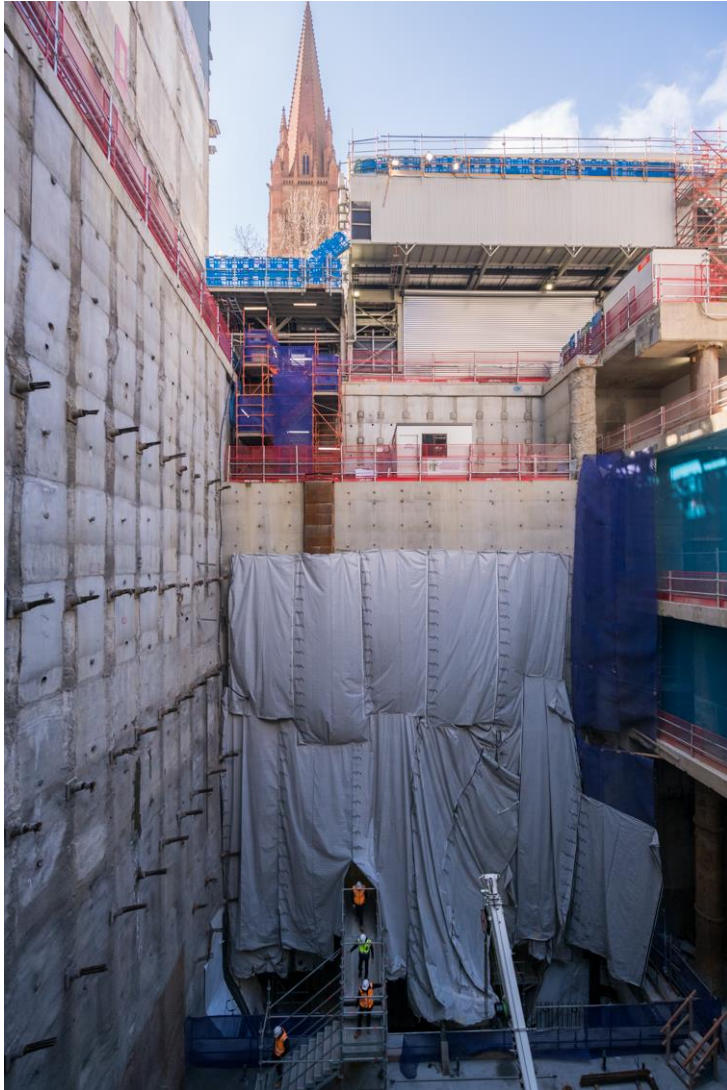
Milestone – Gantry install on Collins Street



Milestone – Completion of Bulk Excavation at Flinders Quarter



Milestone Flinders Quarter – bulk excavation completion



- Completed after nearly 18 months
- Bulk excavation resulted in the removal of around 190,000 tonnes of rock
- Traditional open pit excavation method in shaft A
- Unusual top-down method in Shaft B
- Reached a maximum depth of 28 metres from street level

Flinders Link

Looking from Basement 2



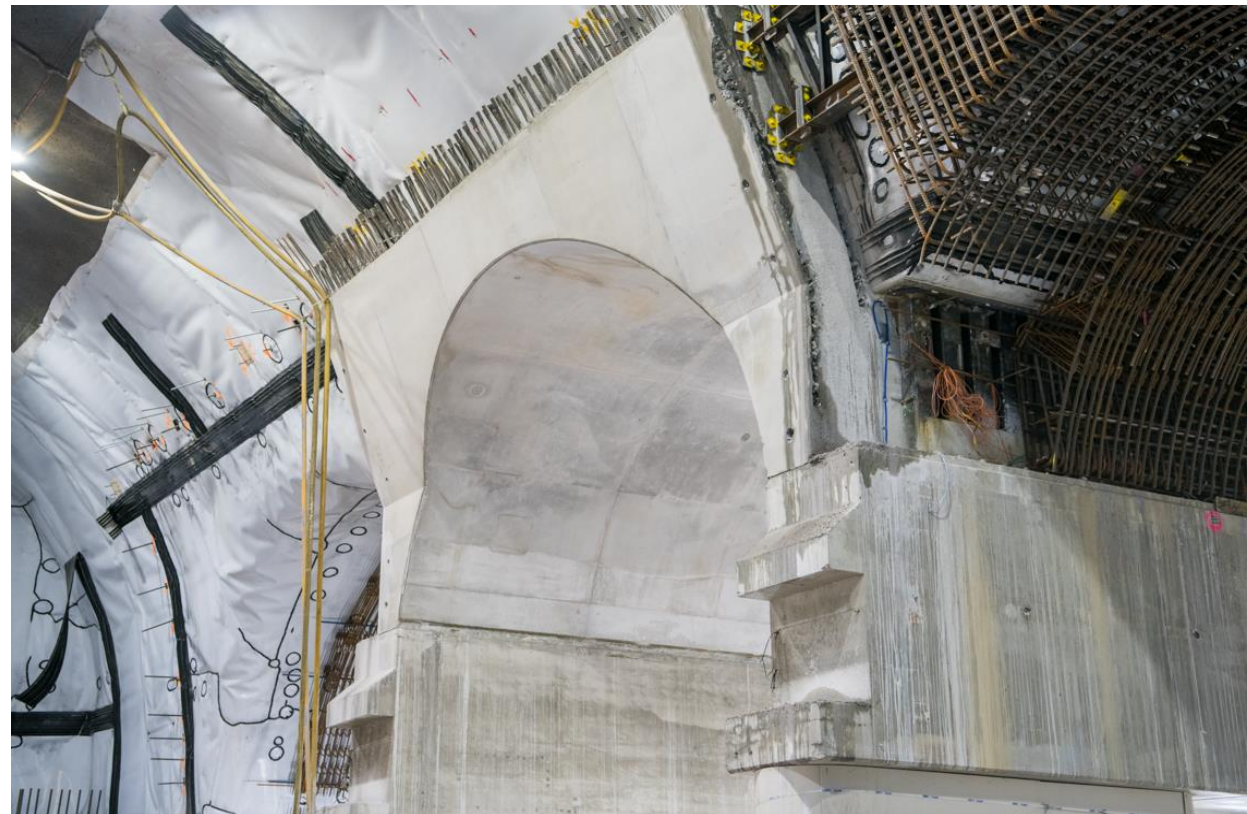
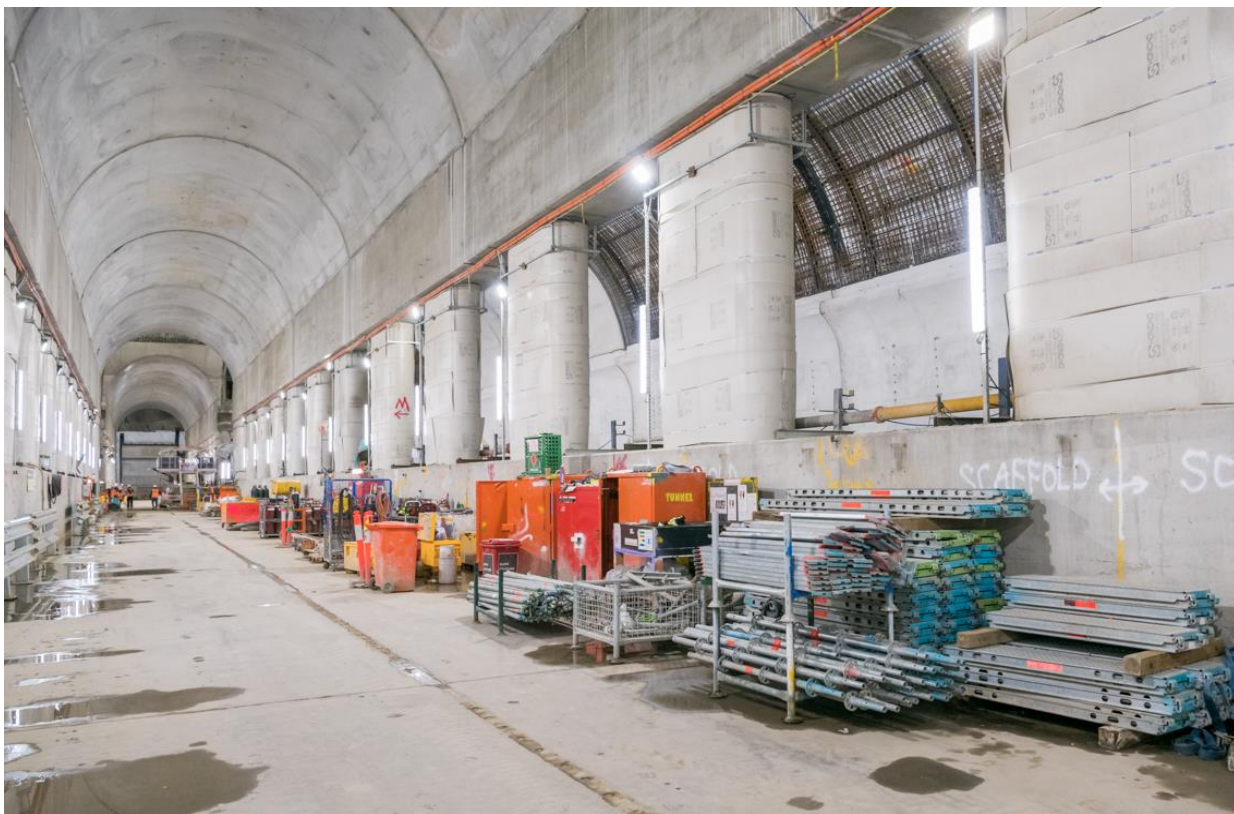
Rail Tunnels

Looking south – next stop Anzac



Central Cavern

Including columns and picture frame



Questions