

ACTIONS AND ISSUES REGISTER



#	DATE RAISED	ACTION / ISSUE	OWNER	STATUS	DATE CLOSED
<i>No actions recorded</i>					



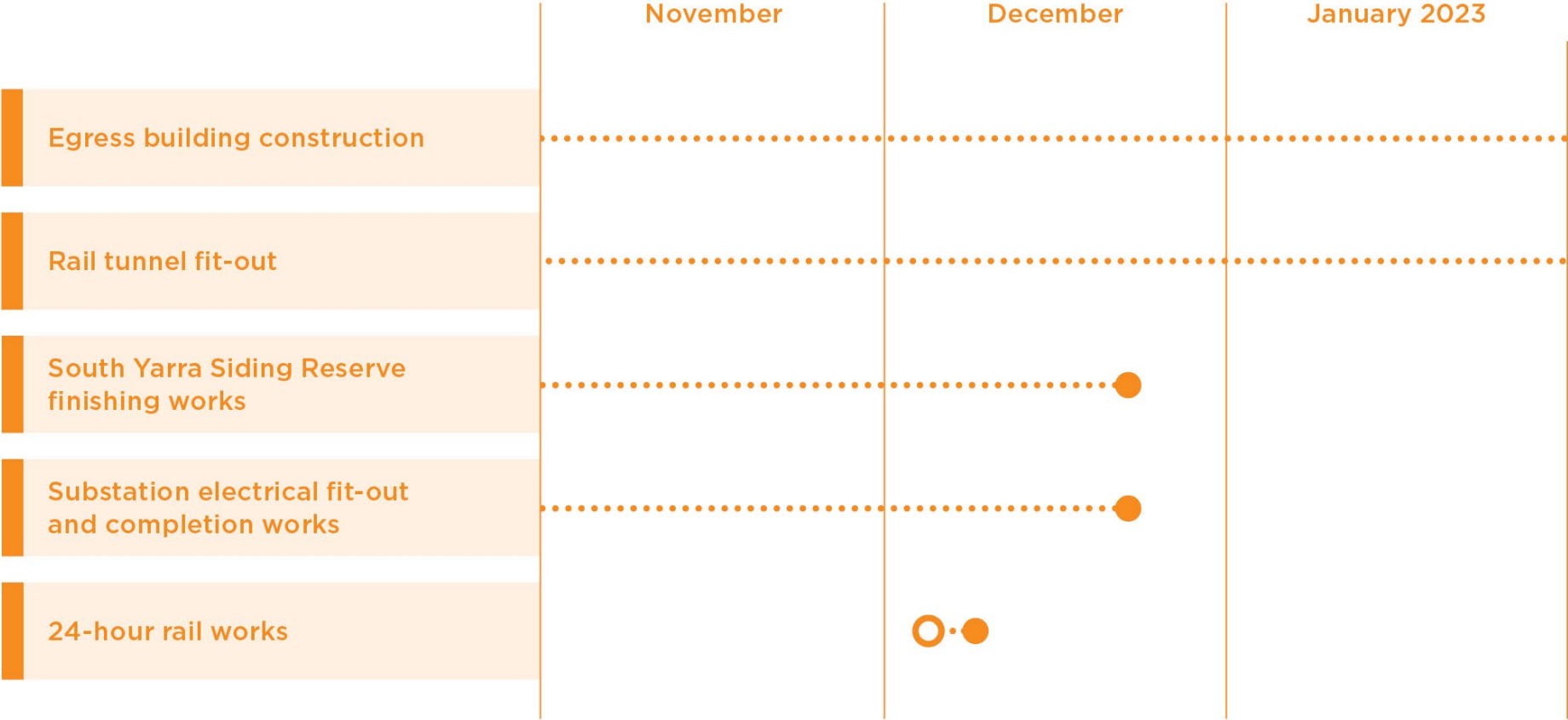
SOUTH YARRA (EASTERN PORTAL) PRECINCT

COMMUNITY REFERENCE GROUP

25 October 2022



Construction lookahead





CONSTRUCTION UPDATE - RNA

South Yarra Siding Reserve



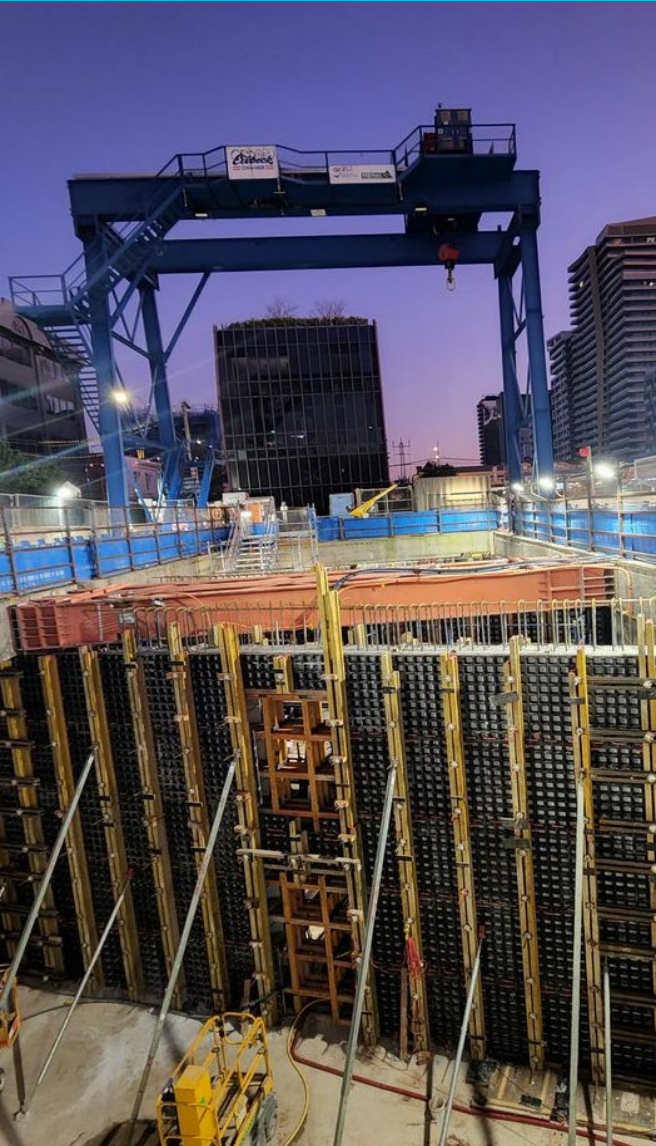
Substation team





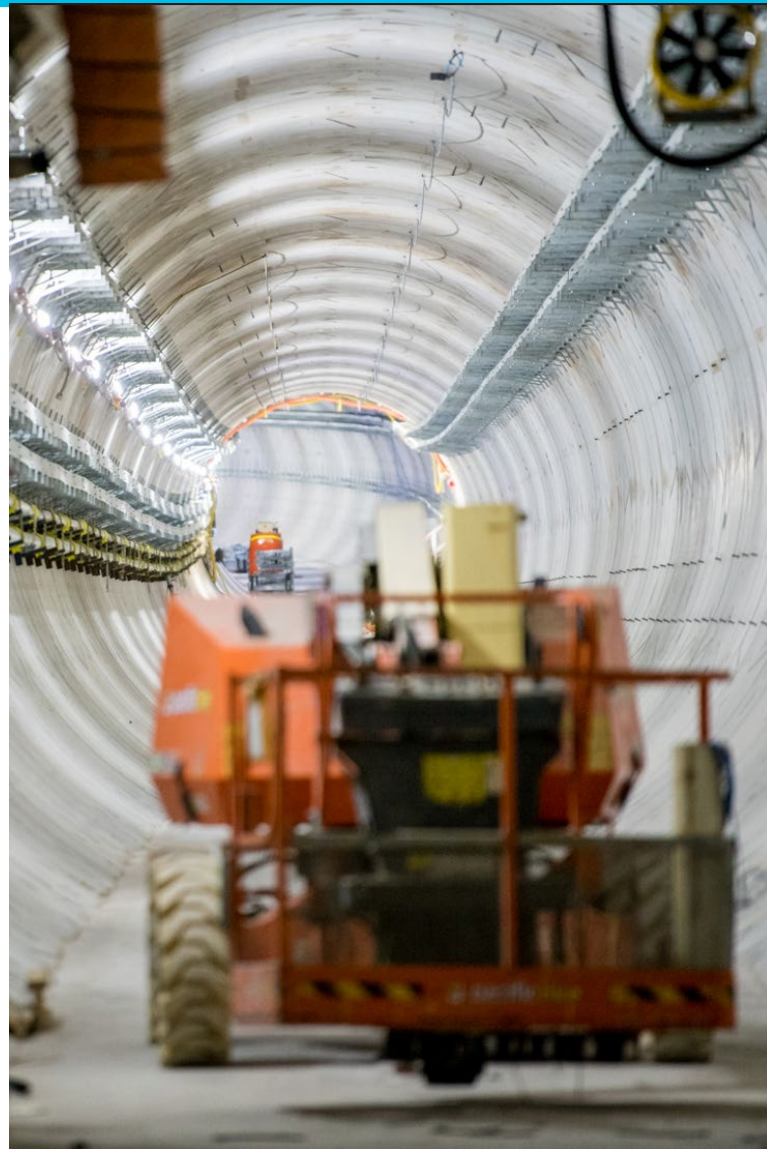
CONSTRUCTION UPDATE - CYP

Retrieval shaft build out and egress building construction



- Concrete pours will continue building out the internal walls of the egress building
- Intermediate secondary walls will be installed across B1 and B1 mezzanine levels
- Formwork frames and concrete pours will begin to develop the roof slab at surface level, closing off the top of the egress box
- All pours will commence during standard working hours
- In some sections, works may continue out of hours once the pour has commenced

Rail tunnel fitout works



- Materials for rail tunnel fit out will continue to be lowered from the William Street bridge, transported into the decline structure and along the tunnel alignment
- Track form gantries will arrive onsite early November
- Installation of track form will commence in the decline structure in mid-November

Rail tunnel fitout gantry movements



- 27/28 Oct -Two cable gantries will be demobilised and removed from site
- As these gantries are considered oversized loads, they will need to be transported between 1am and 5am
- The gantries will be placed on a truck on William Street during normal construction hours. The truck will drive out of site and park on Arthur Street
- At 1am the truck will leave Arthur Street
- In early November two track form gantries will be delivered to site via the William St bridge
- These gantries will be delivered to site between 1am and 5am. The truck will wait inside site and the gantry will be lowered down to the tunnel fitout team during normal construction hours

Osborne Street gantry crane removal



- In mid to late November the blue gantry crane over the egress shaft will begin to be demobilised
- As was the case during its delivery to site, removing the crane will require a short-term closure of Osborne Street
- Access to local driveways will be maintained, however on-street parking will be impacted during the works
- As gantries are considered oversized loads, they will need to be transported off site between 1am and 5am



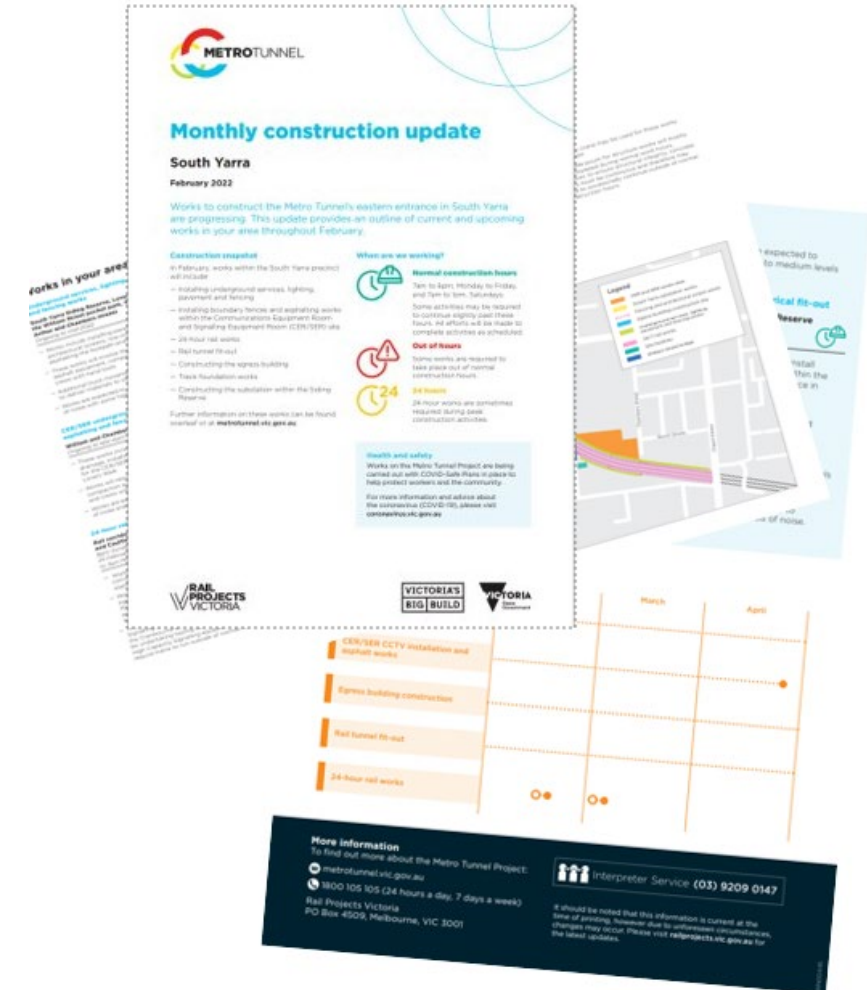
COMMUNITY & COMMUNICATIONS UPDATE

COMMUNICATIONS

Recent and upcoming communications



- The November construction update will be distributed to residents and businesses in early November



24-HOUR RAIL WORKS

Rail corridor between South Yarra and Caulfield stations



- From 9pm Friday 9 December to 3am Monday 12 December, RNA will undertake 24-hour rail works between South Yarra and Caulfield stations
 - Installing underground services including signalling assets
 - Installing and testing rail signalling assets including pulling cables throughout the rail lines
 - Works within the rail corridor will involve the use of excavators, non-destructive digging (NDD) truck, elevated work platform (EWP) cable trucks and hand tools
 - More information for rail works within the Eastern Portal will be provided closer to the date.

- **Out of hours**

- Out of hours testing will continue intermittently on the Cranbourne and Pakenham lines throughout 2022 to enable High Capacity Signalling testing
- Testing of the High Capacity Signalling technology is expected to generate low levels of noise.





PROJECT WIDE UPDATE

Arden Station



- Two of the skylights in Arden Station have been installed and glazed
- At platform level, the installation of platform screen doors has begun
- On surface level, works around the station entry have commenced to create the new terraced area as part of the final design



Parkville Station



- In the station box, architectural and mechanical, electrical and plumbing fit out works are ongoing
- On surface level, steel and precast elements continue to be installed for Parkville Station's entrances
- Staged reinstatement and public realm works have commenced on Grattan Street between Leicester and Bouverie streets



State Library Station



- The first arch pour was recently completed in the Little La Trobe adit. Eventually the adit will house escalators which will transport passengers to and from the Station platform
- Shaft construction is continuing at La Trobe, Little La Trobe and Franklin St East and West sites
- Platform rail tunnel construction is continuing beneath Swanston St
- Station entrance works are continuing with construction of core walls and columns.



- Hoardings have been installed at platform level at Flinders Street Station in preparation for the installation of 6 lifts from platform level to subway
- Acoustic shed removal works have commenced at City Square
- Concrete structure works continue at City Square and Flinders Quarter
- Lining and structures works continuing within the station cavern, rail tunnels and adits



Anzac Station



- Works on the canopy over the new tram/train interchange are nearly complete
- Platform precast installation at platform level is now complete
- Excavation is now underway on the second stage of the entrance adjacent to the Shrine of Remembrance
- The southbound lane of St Kilda Road has been realigned and works are underway inside site to build the new tram alignment around the tram platform
- Reminder: Buses will replace trams on St Kilda Road between the Arts Centre and Commercial Road from 27 November until 17th December 2022





QUESTIONS?