

NOVEMBER 2022

Walking and cycling

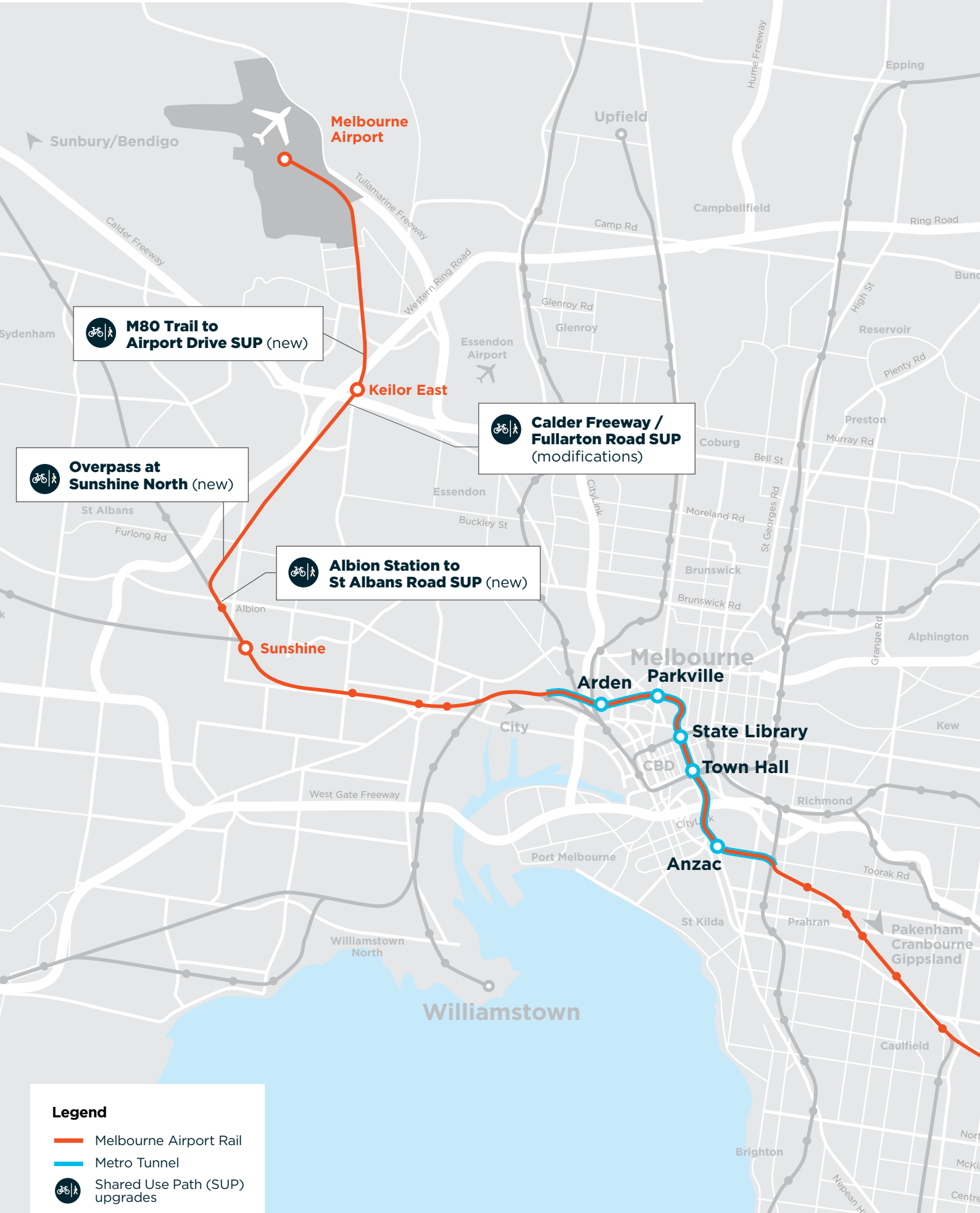
Melbourne Airport Rail is a transformational public transport project connecting to Victoria's regional and metropolitan network with trains to run from Melbourne Airport through Sunshine Station and the Metro Tunnel.

Active transport helps ease congestion and contributes to community wellbeing.

As part of the Melbourne Airport Rail project, major upgrades will be made to the shared user path network, including enhancements to the M80 Trail and up to 8 kilometres of new or upgraded walking

and cycling paths between Sunshine and the Melbourne Airport for local cyclists and pedestrians in Albion, Airport West, Keilor Park, Sunshine North and Tullamarine. This fact sheet outlines the walking and cycling improvements that will be delivered as part of the project.





Legend

-  Melbourne Airport Rail
-  Metro Tunnel
-  Shared Use Path (SUP) upgrades

Shared use overpass in Sunshine North

A new and safe accessible shared use overpass will be built over the rail corridor in Sunshine North, to maintain a safe crossing point for pedestrians and cyclists in what is a largely residential area. The overpass will replace two nearby existing connection points – an underpass connecting Gilmour Road with Barwon Avenue and an unprotected pedestrian crossing connecting Mansfield Avenue with Drake Street – both of which will be removed as part of the construction process. This area of the rail line will also be fenced to keep the community safe.

Fullarton Road shared use path

An upgraded shared use path from Fullarton Road over the rail line will be delivered, connecting communities of Airport West and Keilor Park and improving connections to the broader active transport network. The M80 Trail under Calder Freeway and Fullarton Road will also be retained and will be relocated to the south east of the rail corridor as space is created for the Melbourne Airport Rail tracks.

Shared use path at Albion Station

As part of the Sunshine to Sunbury cycling corridor which currently finishes at Albion Station, a new shared-use path will be delivered near Albion

Station to connect to on-road cycling infrastructure at St Albans Road. This upgrade will provide the missing link identified in the Department of Transport's Strategic Cycling Corridor network, connecting the broader walking and cycling network. Extra bike cages and hoops will also be built at Albion Station.

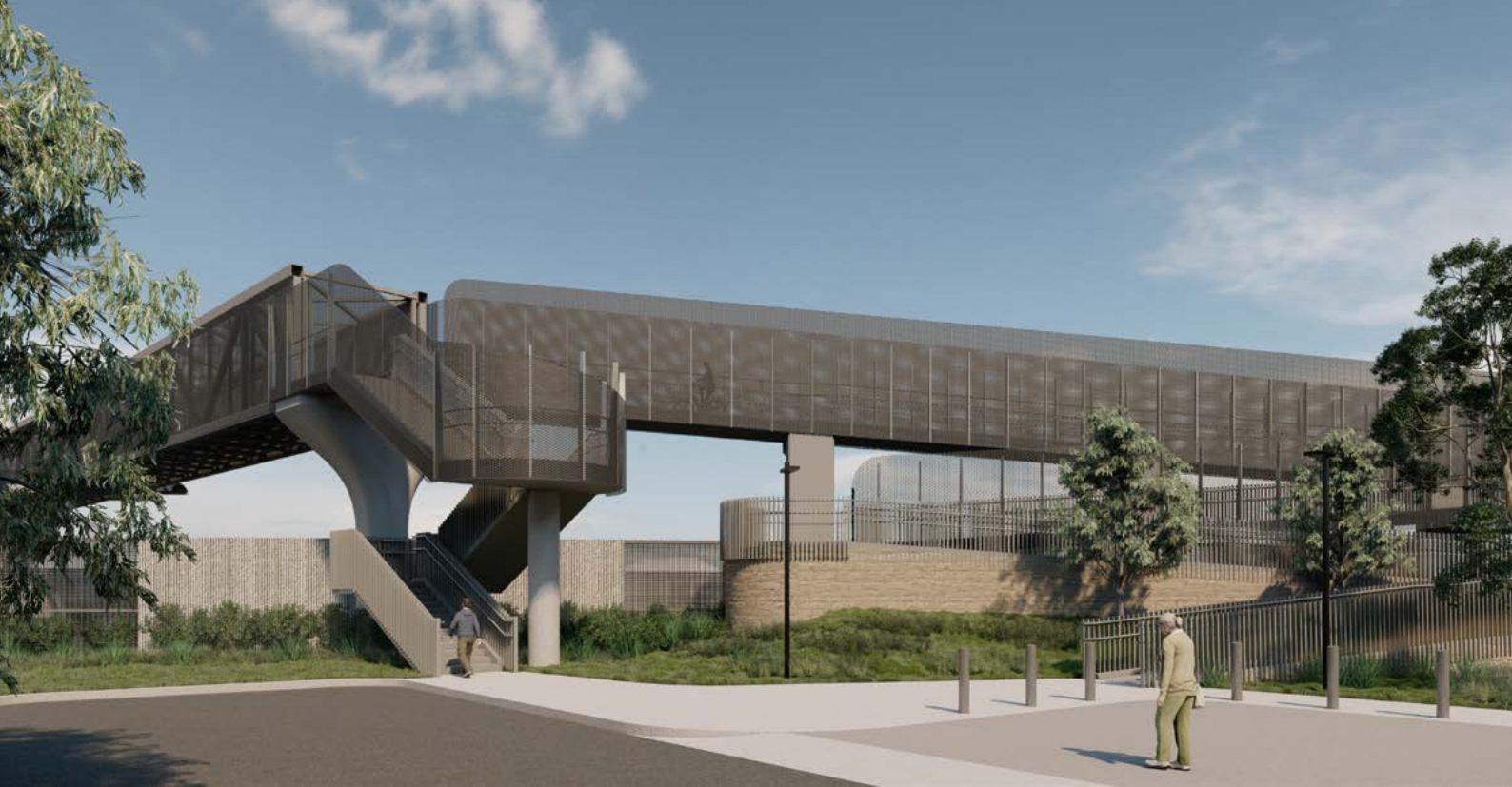
Future shared use connections

The project team is working with stakeholders including VicRoads, Bicycle Network Victoria and local councils to explore opportunities for future shared use network connections. The missing link at Tullamarine between Fullarton Road and Sharps Road will also be addressed. Between Keilor East and Melbourne Airport, a new shared use path near Steele Creek will extend from the M80 Trail to Tullamarine Park Road. A connection under Airport Drive to the south of Tullamarine Park Road will be built with a pedestrian operated signal to cross Tullamarine Park Road and another connection along the east side of Airport Drive to Sharps Road will connect into the existing Airport Drive shared use path.

Improvements to local paths and connections

The project will also upgrade other local paths and connections to make walking and cycling safer and easier.





Detours and changes to your local movements

There may be some temporary detours and diversions for shared use paths during construction. Signage will be in place to guide cyclists and pedestrians when this occurs, and we will advise the community in advance of these detours being put in place.

Upon completion of Melbourne Airport Rail, there may be some changes to the way you travel along the shared use paths. We will provide maps and locations of any new and upgraded shared use paths when this occurs.



About Melbourne Airport Rail


Melbourne Airport Rail will connect people from the airport to where they need to go - be that work, home or Victoria's key tourism destinations.

Airport trains will run from a new station at Melbourne Airport every 10 minutes, through the Metro Tunnel to Melbourne's CBD in around 30 minutes.

Construction will begin in 2022 with a target opening date of 2029, subject to approvals. The project will support up to 8,000 jobs during construction.

More information

 airportrail.vic.gov.au

 1800 105 105
(24 hours a day, 7 days a week)

Rail Projects Victoria
PO Box 2392, Melbourne, VIC 3001



Interpreter Service (03) 9209 0147

It should be noted that this information is current at the time of printing, however due to unforeseen circumstances, changes may occur. Please visit railprojects.vic.gov.au for the latest updates.