

EARLY WORKS STARTING



Artist impression only, subject to change

Getting ready for construction at Brunt Road

The Victorian Government is removing the dangerous and congested level crossing at Brunt Road, Beaconsfield. This level crossing has been fast tracked for removal, with 22 to be removed on the Pakenham Line making it boom gate free by 2025.

The Brunt Road level crossing will be removed by building a new road bridge over the Pakenham Line.

Building a road bridge means we can get rid of the Brunt Road level crossing sooner. It will also be less disruptive for drivers and train passengers during construction.

In the lead-up to major construction, we have been preparing the area before we can start piling for the new road bridge.

This includes setting up our site offices and facilities, installing temporary fencing, removing vegetation and relocating utilities like power lines, drainage and water mains.

Some of these activities started in late 2022. We'll provide more information to residents and businesses in advance of any major construction activities.

Why the level crossing needs to go



8400 vehicles pass through the level crossing each day



Boom gates down for **24 minutes** of the morning peak



24 trains through the crossing during the morning peak



Two near misses and one collision since 2012

CONSTRUCTION PHASES

Large projects involve months of planning to minimise disruptions, make the most efficient use of large machinery and prepare the hundreds of workers that are brought to the local area.



Setting up and early works

Early 2023

Early works and site establishment at Brunt Road will kick off in late 2022. We'll start by:

- setting up site storage and fencing off work areas to keep our staff and the public safe
- removing vegetation that will be in the way of the new infrastructure
- installing a temporary site building
- relocating utilities that will be in the way of major works, such as water, drainage, sewer pipes and gas.



Major construction

2023 to 2024

From early 2023, our works in the area will start to speed up as we move into the major construction phase. We'll be doing piling works, building retaining walls for the new road bridge and backfilling the new infrastructure.

Piling involves the construction of columns in the ground to provide support to structures like the road bridge and retaining walls. Piles are bored vertically into the ground and are often made from reinforced concrete.

Major construction activities include:

- works around the existing road and rail corridor
- temporary changes to local road access
- some major drilling activity
- building the bridge and retaining wall foundations.

Trains will continue to run as normal through most of the major construction period. At times, buses will replace trains while we do critical works in the rail corridor.

As the bridge is being built next to the existing road, Brunt Road will remain open for most of this phase.



Removing the level crossing

2024 to 2025

Once the road bridge structure has been completed, we will need to temporarily close Brunt Road for up to 12 days to tie the road and paths into existing infrastructure. This closure will ensure the job is done safely and as quickly as possible. We will notify the community ahead of time about any impacts and detours.

At this stage, we'll also:

- remove the boom gates
- tie the new bridge structure into existing infrastructure
- install lighting along the new road bridge.



Finishing works

2025

This phase is where we add all the finishing touches to ensure the road bridge fits in with the local area.

This phase will feature:

- landscaping
- removing the site compound
- reinstating the project area.



Landscaping will take place as part of the final stage of works



Artist impression only, subject to change



Earthworks at Robinsons Road



Piling works at Clyde Road



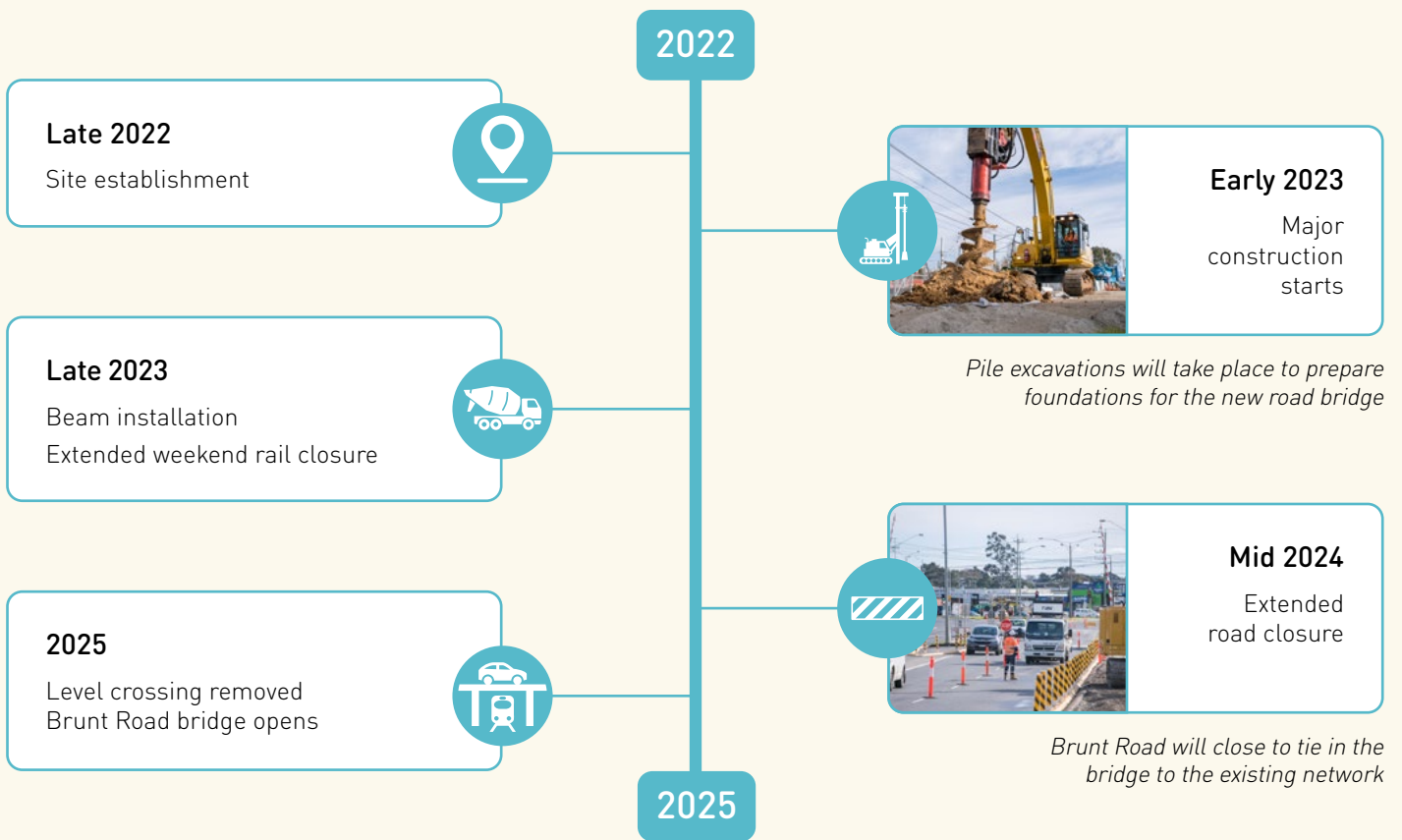
Asphalt is tamped on the South Gippsland Highway road bridge



Boom gate removal at South Gippsland Highway



BRUNT ROAD CONSTRUCTION TIMELINE



Timeline subject to change

CONTACT US

contact@levelcrossings.vic.gov.au
1800 105 105
Level Crossing Removal Project
GPO Box 2392, Melbourne VIC 3001

Follow us on social media
@levelcrossings



Translation service – For languages other than English, please call 9209 0147.

Please contact us if you would like this information in an accessible format.

If you need assistance because of a hearing or speech impairment, please visit relayservice.gov.au