



LEVEL CROSSING REMOVAL PROJECT

Artist impression only - subject to change

LEVEL CROSSING REMOVAL UPDATE

BELL TO MORELAND
ISSUE #6 - JANUARY 2020

Preparing for construction

We are getting on with removing four level crossings on the Upfield line, at Bell, Munro and Reynard streets in Coburg and Moreland Road in Brunswick.

The Bell to Moreland Level Crossing Removal Project will create almost two MCGs' worth of open space, separate paths for pedestrians and cyclists, and new and improved Coburg and Moreland stations.

The four level crossings will be gone in mid 2020 and the new stations at Coburg and Moreland will be open to passengers in late 2020.

To prepare for major construction later this year, we've been moving utility services, installing fencing and relocating train power and signalling.

From January you'll notice more activity around Moreland and Coburg stations, including some changes to the way you move around the area:

- A section of the Upfield Bike Path will be closed from 6 February 2020 until mid 2021
- Access and car parking changes around Moreland and Coburg stations
- Temporary fencing along the rail corridor to create safe work areas
- Buses will replace trains on the Upfield line from 7 February to 9 February 2020.

Project benefits

-  Improved safety
-  Less traffic congestion
-  Two new stations
-  Better public transport
-  Upfield bike path upgrade
-  Two MCGs' worth of open space and landscaping



SIGN UP FOR PROJECT UPDATES
levelcrossings.vic.gov.au

Authorised and published by the Victorian Government, 1 Treasury Place, Melbourne



Works in early 2020 around Moreland and Coburg stations

From January, you'll start seeing more construction activity and workers in the area as we prepare to raise the rail line and build new stations at Moreland and Coburg.

We will install fencing around the stations and prepare the area for the large 'crawler cranes' that will be used to build the new stations. Then we'll build a base to support this heavy machinery to keep people safe and protect surrounding buildings.

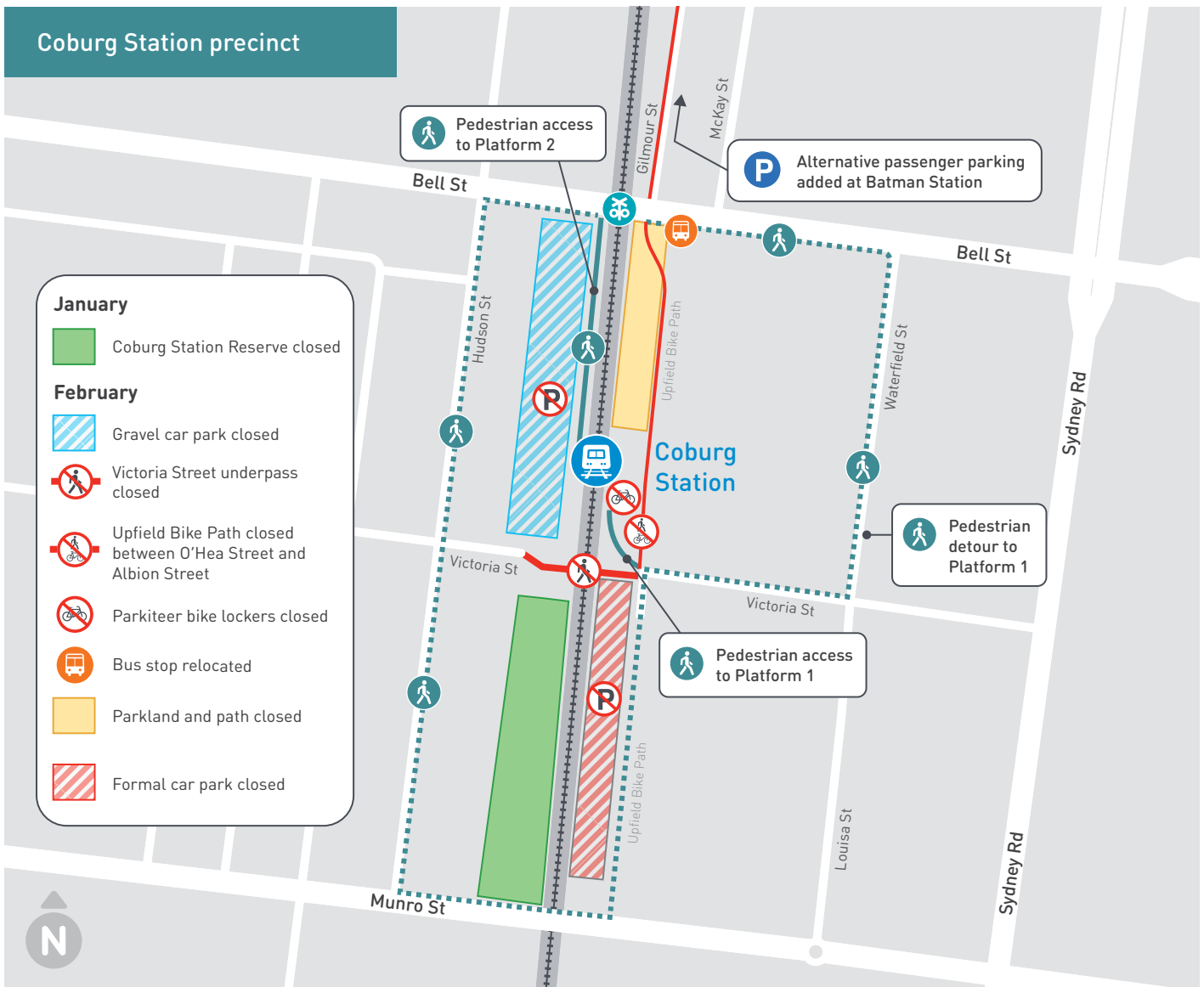
Where the rail corridor is too narrow for crawler cranes to operate, we'll use a gantry crane to lift and install the beams for the rail bridge.

In January we will begin removing trees and vegetation in the rail corridor and station precincts to prepare for construction of the new elevated rail and station. We will replant 3,000 new trees and plants along the rail corridor as part of new open space and landscaping for the project.

We'll also work to build more than 200 parking spaces at Batman Station to be used by commuters during the project.

In February, we'll start building the tracks for the gantry crane, which will move up and down the rail corridor from north of Moreland Station to Munro Street.

Please see the maps below for more information about changes to how you move around Moreland and Coburg stations.



For more information on changes to the stations, visit ptv.vic.gov.au or call 1800 800 007.

To find out more about the Bell to Moreland project, visit levelcrossings.vic.gov.au

What to expect

We'll generally work from **7am to 6pm Monday to Friday and 7am to 3pm Saturdays**. We'll let you know in advance of any disruptive activities or work outside of these normal hours.

We work to minimise construction impacts, but as with any major construction project, noise and vibration are unavoidable.

The project team will be talking to residents that may be impacted and if you have any questions about how we manage construction impacts, call **1800 105 105** or email contact@levelcrossings.vic.gov.au

For more information on these and other disruptions visit levelcrossings.vic.gov.au/disruptions



Buses replace trains

Buses will replace trains on the Upfield line between North Melbourne and Upfield from **8pm Friday 7 February to last train Sunday 9 February**.

This will allow us to prepare for major construction in mid 2020.

To plan your journey, visit ptv.vic.gov.au

Your cycling detours during works

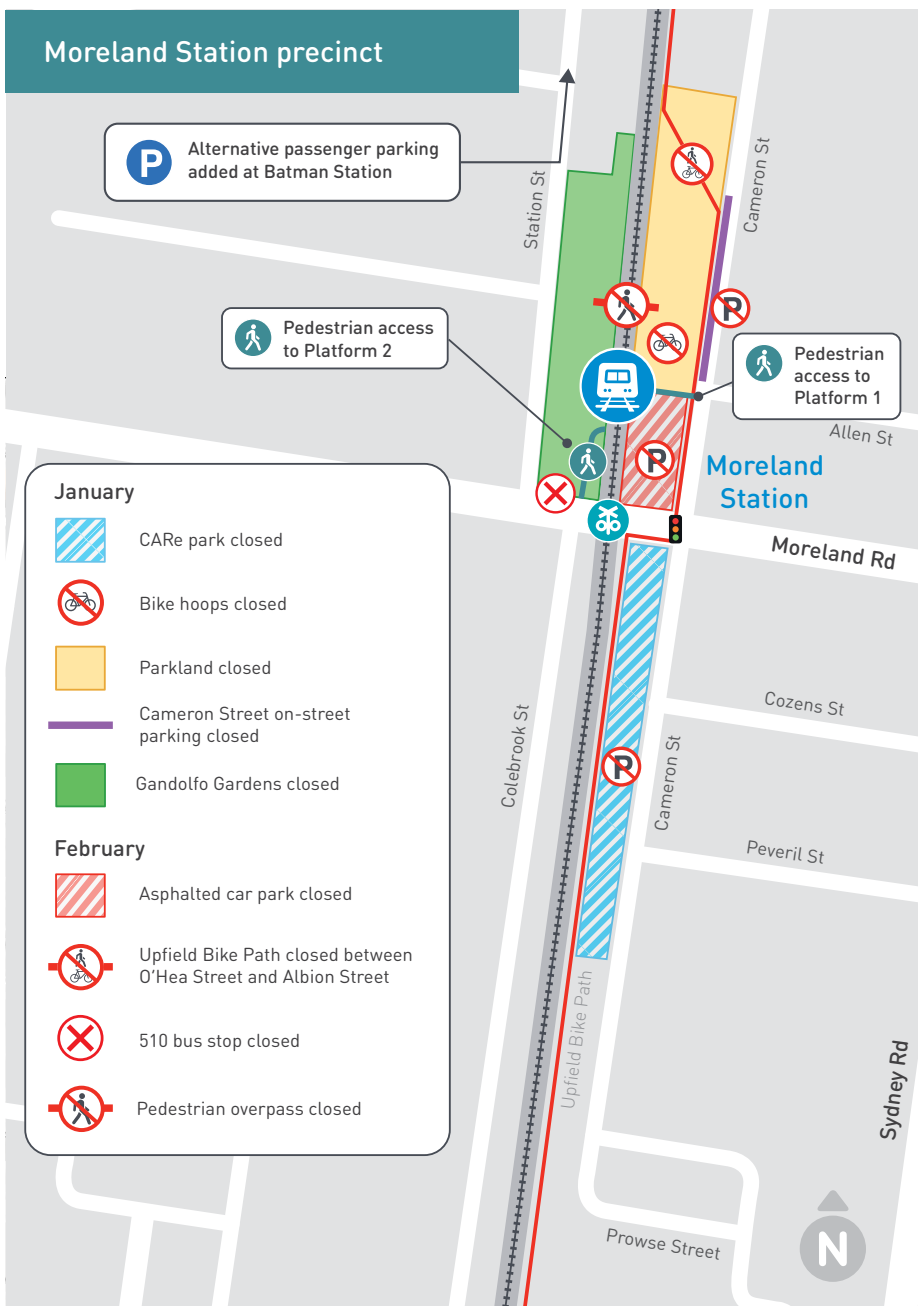
A section of the Upfield Bike Path, between O'Hea Street, Coburg and Albion Street, Brunswick, will be closed from 6 February 2020 until mid 2021.

We have worked with bike groups and VicRoads to develop detour routes that use existing 'shimmy' routes to the east and west of the existing Upfield Bike Path. Shimmy routes use quieter streets, avoiding major and narrow roads with fast-moving traffic.

These local detours will feature signs to show the way and line markings to show cyclists where to ride. Sydney Road is not part of the detour route as it will be used by construction vehicles during the project.

In January, we will speak with cyclists and pedestrians, and residents along the detour route.


The Bell to Moreland Level Crossing Removal Project will create significant improvements for cyclists and pedestrians, including separated cyclist and pedestrian paths, more lighting and increased bike parking at Coburg and Moreland stations.




Artist impression of bike path.*


*Artist impression only - subject to change.

Cycling detours

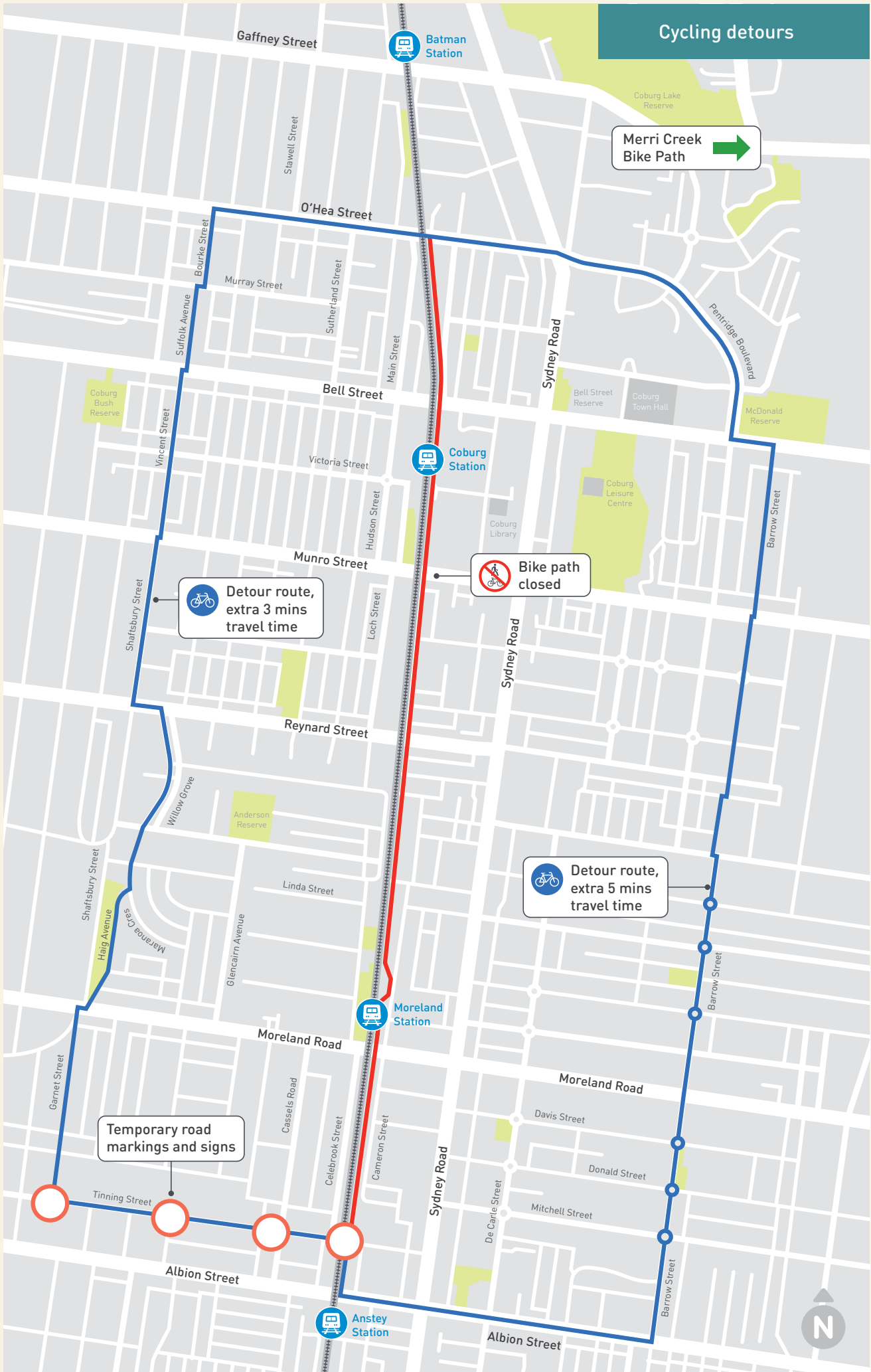
Merri Creek Bike Path 

 **Detour route, extra 3 mins travel time**

 **Bike path closed**

 **Detour route, extra 5 mins travel time**

Temporary road markings and signs



Works happening in mid 2020

In mid 2020, we will work around the clock when sections of the Upfield line are closed to build your new stations and the elevated rail line.

A range of train replacement bus services and alternative public transport options will be available during planned disruptions to get passengers where they need to go.

We're also installing a turnback facility at Anstey station to allow trains to

continue to run between the city and Anstey during the construction blitz, minimising disruption for about half of all Upfield line passengers.

We will provide more information ahead of these changes to help with your travel plans.

Project milestones

✓ 2017

- Site investigations

✓ 2018

- Community consultation
- Design refinement and further technical considerations
- Government commitment to remove additional crossings on the Upfield line

✓ 2019

- Confirm design solution
- Further community consultation
- Early works begin

● Early 2020

- Relocate train power and signalling infrastructure
- Site establishment

○ Mid 2020

- Construction blitz
- Boom gates gone

○ Late 2020

- Stations reopen

○ 2021

- Project complete

Please note that the timeline above is subject to change.



Open space update

Raising the rail line to remove the level crossings from Bell to Moreland provides an opportunity to create almost two MCGs' worth of new open space below the rail bridge.

The community has voiced their desire for greener open space along the rail corridor, as well as around the station precincts, so we're developing a landscaping strategy that promotes biodiversity and sustainability along the corridor.

We will provide new green spaces with shade and shelter for wildlife, and plant almost three times as many trees along the corridor.

The Coburg and Moreland station precincts will feature a landscaped plaza with trees, gardens and seating.

We're now considering all the feedback we've received from the community during 2019 and refining the final designs. You can find a summary of the latest feedback on our website.

We'll share the updated designs with the community in early 2020.

Visit the Bell to Moreland info hub

Got a question about the Bell to Moreland project? Drop in to our community hub to learn more about the project.

Where: 153 Sydney Road, Coburg

When: Check levelcrossings.vic.gov.au for our opening hours



Find out more

To find out more about the Bell to Moreland project, call 1800 105 105 or visit levelcrossings.vic.gov.au



Sign up for project emails

To stay up to date with the latest project news, sign up to receive regular emails at levelcrossings.vic.gov.au/subscribe



CONTACT US

contact@levelcrossings.vic.gov.au

1800 105 105

Level Crossing Removal Project
GPO Box 4509, Melbourne VIC 3001

Follow us on social media
[@levelcrossings](https://www.facebook.com/levelcrossings)



Translation service – For languages other than English, please call 9280 0780.

Please contact us if you would like this information in an accessible format.

If you need assistance because of a hearing or speech impairment, please visit relayservice.gov.au