

HURSTBRIDGE LINE DUPLICATION UPDATE

MAY
2023



Solar panel system. Subject to change.

Sustainability

The second stage of the Hurstbridge Line Duplication delivers further improvements for Melbourne's north east, including more train services, less crowding on peak trains and better connections to public transport.

As part of the project, we built new modern stations at Greensborough and Montmorency and upgraded Diamond Creek Station.

We also duplicated two kilometres of rail track between Greensborough and Montmorency stations and one and a half kilometres between Diamond Creek and Wattle Glen stations to allow more trains to run more often.



Reducing water usage

We will install rainwater tanks at the new stations – 15,000 litre capacity at Greensborough and 3000 litre capacity at Montmorency – for toilets, washdown areas and landscaping.



The rainwater tanks will help to reduce water usage by 50 per cent.



Ecology

We have installed 63 nest boxes along the Hurstbridge Line from Greensborough to Montmorency, as well as Diamond Creek to Wattle Glen.

This environmental initiative provides a home for local species while new vegetation planted as part of the project matures. It also promotes habitat connectivity for the different species.

A mix of nest boxes, hollow logs and flat packs have been designed for the many species that are common visitors to the area. These include sugar gliders, micro-bats, brushtail and ringtail possums, and various bird species such as magpie, rosella, rainbow lorikeet, king parrot.



SIGN UP FOR PROJECT UPDATES
levelcrossings.vic.gov.au





Renewable energy

We have implemented a Traffic and Pedestrian Control System on Para Road in Greensborough, allowing our staff to exit the site and travel safely from the site compound to the construction site.

The control system uses 100 per cent solar powered lights, which provides cost savings and reduces traffic hazards.

We will also install a combined 30 kilowatt solar panel system at the new Greensborough and Montmorency stations. These panels will help to reduce greenhouse gas emissions.



Traffic and pedestrian control system on Para Road in Greensborough



Trees, vegetation and landscaping

We will plant more than 83,000 trees, plants and shrubs once works are complete. These plantation numbers may change as the project progresses.

Planting will be a combination of native trees, shrubs, flowering plants and grasses that enhances the ecological character of the local area.

We focused on providing a resilient, sustainable landscape by selecting drought-tolerant plants with low water usage and high growth performance.



Erosion and sediment control

At Hurstbridge, we use an innovative filter mat system that is used to cover all drains and captures sediments.

This minimises sediments moving into drains, as part of ERSED (Erosion and Sediments Controls).

The filter mats are durable and are reused at other projects.



Non-destructive digging waste recycling system

We have designed and constructed a non-destructive digging (NDD) consolidation facility for early use on the Hurstbridge Line Duplication.

This facility is for managing mud disposal, allowing for the spoil and water to be separated and reused elsewhere across the project. This is a sustainable alternative to increased generation of landfill and sewer waste, which is a current construction practice.

The facility helps to improve construction productivity by establishing a short turnaround consolidation facility for NDD trucks on site.



Diverting textiles from landfill

We have partnered with Upparel, an Australian and New Zealand upcycle company.

For a six month period, we will divert old personal protective equipment, uniforms and personal clothing items from landfill, converting them into a valuable and circular resource.

During this period, about 700 kilograms of textiles will be diverted from landfill.



Biofuel use

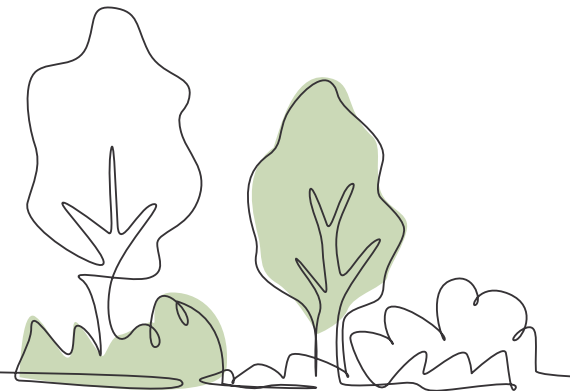
We have implemented the use of biofuel on the project. B5 biodiesel is a low-level biofuel blend that is being supplied to tanks used by onsite generators. The generators use about 1000 litres of biofuel a month.

The use of biofuel helps to reduce greenhouse gas emissions.



Community inclusion

Across the Hurstbridge Line Duplication project, we also invest in organisations that provide employment and training to disadvantaged groups within their communities.



CONTACT US

contact@levelcrossings.vic.gov.au
1800 105 105
Level Crossing Removal Project
GPO Box 2392, Melbourne VIC 3001

Follow us on social media
[@levelcrossings](#)



Translation service – For languages other than English, please call 9209 0147.

Please contact us if you would like this information in an accessible format.

If you need assistance because of a hearing or speech impairment, please visit relayservice.gov.au