

# Permanent Access Changes

BRIDGE INN ROAD UPGRADE



We're adding extra lanes on Bridge Inn Road between Plenty and Yan Yean roads as well as upgrading intersections and building better walking, cycling and public transport connections.

## Changes to the way you access local streets

When we upgrade main roads by adding new lanes, it's important to restrict where cars can turn right across multiple lanes into or out of driveways and side roads.

These changes improve safety for road users, lower the risk and severity of crashes and greatly improve traffic flow by directing traffic to designated intersections, preventing drivers from attempting risky and uncontrolled movements.

When the upgrade is complete, some local roads and property access will be changed to left in and left out only. Right turns and U-turns will only be allowed at certain locations on Bridge Inn Road.

*Image above: Safety barriers lower the risk and severity of crashes.*








**Sign up for updates**  
Subscribe for email and SMS updates  
at [roadprojects.vic.gov.au/subscribe](https://roadprojects.vic.gov.au/subscribe)



# U-turn locations



-  Road upgrade
-  U-turn permitted
-  New bridge
-  New and upgraded walking and cycling paths

  
 Not to scale



## Changing the way you travel

The project will noticeably change the way you travel around your local area. As we'll restrict where cars can turn right across multiple lanes, drivers will need to make a U-turn at the closest intersection with traffic lights, or dedicated U-turn bays to access certain streets and properties.

Safe u-turn opportunities will be at the following intersections along Bridge Inn Road:

- Plenty Road
- Mernda Town Centre
- Schotters Road
- Cookes Road
- Bassetts Road
- Ivanhoe Grammar School
- Painted Hills Road
- Garden Road.





When the road Bridge Inn Road Upgrade is complete, you may have to travel slightly further to access the new dedicated U-turn bays or traffic lights. However, your journey will be safer and more reliable.

### Direct driveway access

When you are entering or leaving Bridge Inn Road from private property or a driveway, you'll only be able to turn left into the driveway or turn left out of the driveway.

### Entering and exiting side streets

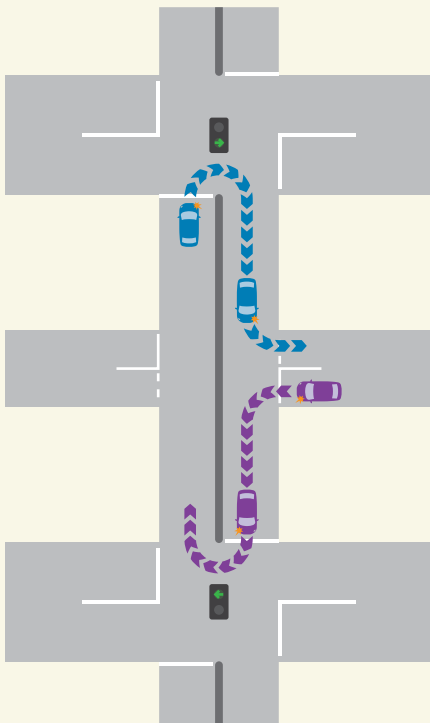


Image above: Artist's impression of the new bridge over Plenty River

### An active community

Pedestrians and cyclists will also benefit from the upgrade, with improved access to cycling and walking paths, safer road crossings and landscaping along the road.

As part of the Bridge Inn Road Upgrade, there will be over seven kilometres of cycling and walking paths for you to enjoy on both the north and south sides of Bridge Inn Road. We'll add access for cyclists and pedestrians on the historic bluestone bridge over Plenty River.

We're making it safer and easier for you to access the things you love about your local area, including public transport, local shops and community facilities.

### Stay informed

For more information on disruptions, visit [roadprojects.vic.gov.au/signup](http://roadprojects.vic.gov.au/signup) to subscribe to email updates or text **BRIDGE INN** to **0499 073 073** to receive the latest traffic disruptions on your mobile.

Visit [ptv.vic.gov.au](http://ptv.vic.gov.au) for changes to bus stops. Residents and businesses affected by upcoming works will be contacted directly by our project team.

### Mapping our progress

Please visit [roadprojects.vic.gov.au/bridgeinn](http://roadprojects.vic.gov.au/bridgeinn) to access the interactive map that shows the design changes, and to see maps showing the permanent changes and recommended turns.

[roadprojects.vic.gov.au](http://roadprojects.vic.gov.au)



For languages other than English please call 9209 0147

1800 105 105 (call anytime)

[contact@roadprojects.vic.gov.au](mailto:contact@roadprojects.vic.gov.au)



Please contact us if you would like this information in an accessible format. If you need assistance due to a hearing or speech impairment, visit [relayservice.gov.au](http://relayservice.gov.au)



Australian Government

