

The first passenger train leaving the new Deer Park Station on the rail bridge in April



Mt Derrimut Road, Deer Park and Derrimut / Issue #5, August 2023

Level crossing removal community update

Mt Derrimut Road level crossing gone, new station open

We're removing 110 dangerous and congested level crossings across Melbourne by 2030.

The Mt Derrimut Road level crossing was 68th on the list. Now that it's gone, the Geelong and Ballarat lines are level crossing free between Deer Park and the city.

The new elevated Deer Park Station also opened in April with temporary access arrangements in place while crews continue works on the station precinct.

Major upgrade works at the intersection of Mt Derrimut, Station and Tilburn roads are also now complete, creating a new bus lane and improved access to the station precinct.

We'd like to thank the community for their patience while these vital works to improve safety and connections were completed.



Luôn cập nhật thông tin

Để biết thông tin dự án và đọc tài liệu này bằng tiếng Việt, vui lòng dùng điện thoại hoặc thiết bị của quý vị để quét mã QR.

Project benefits



Improved safety for drivers, pedestrians and cyclists



Increased accessibility to public transport services



Better connections on both sides of the rail line



A more reliable road network and better travel times



Paving the way for future transport upgrades



Sign up for updates
levelcrossings.vic.gov.au

**VICTORIA'S
BIG BUILD**

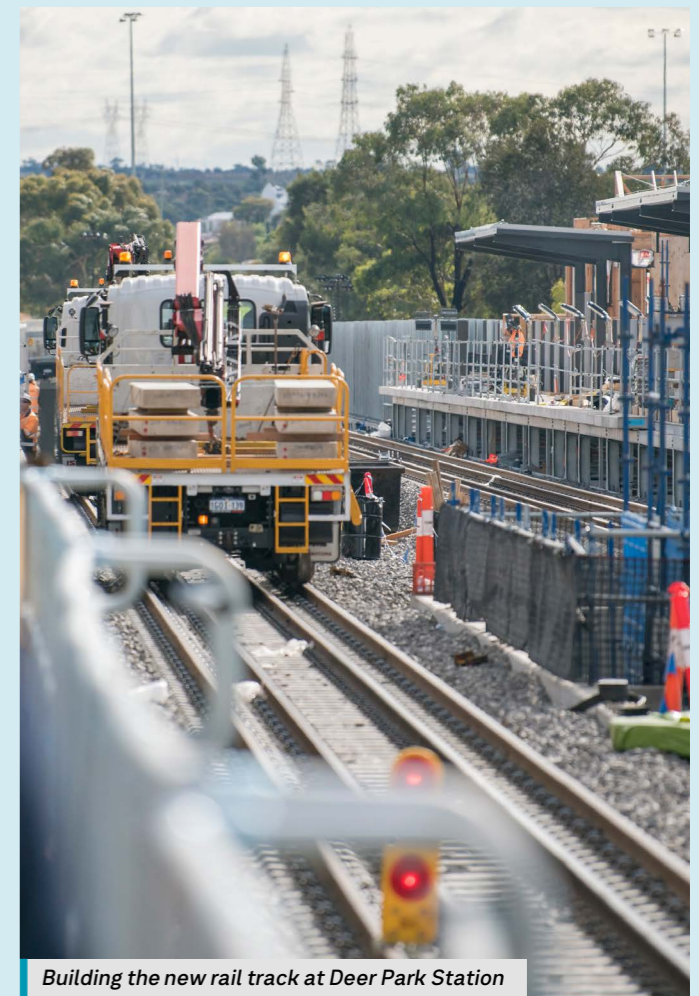
Out with the old and in with the new



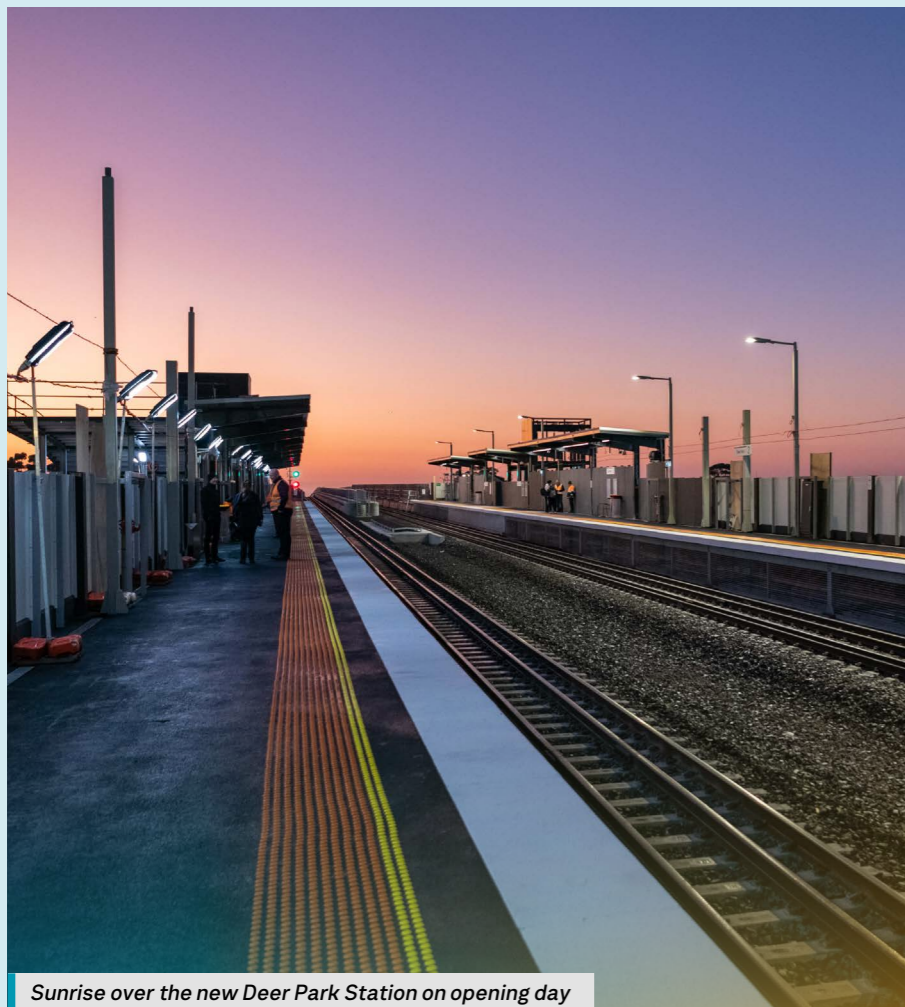
Demolishing the old Deer Park Station



Removing the boom gates from Mt Derrimut Road



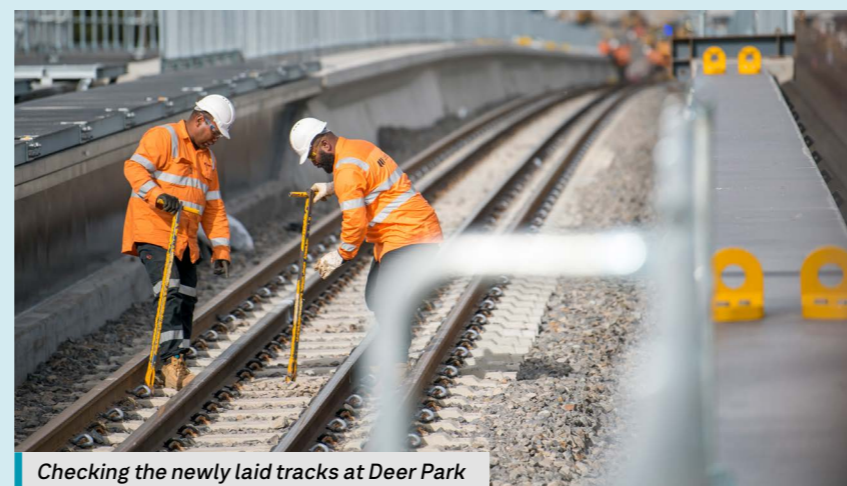
Building the new rail track at Deer Park Station



Sunrise over the new Deer Park Station on opening day



Installing architectural screens on the rail bridge



Checking the newly laid tracks at Deer Park



Opening day of the upgraded intersection at Mt Derrimut, Station and Tilburn roads

Polyrok concrete mix on the Deer Park Station eastern building roof



Reducing our eco-footprint at Mt Derrimut Road

Our goal is to deliver sustainable infrastructure that continues to support safe and healthy Victorian communities into the future.

The Mt Derrimut Road project contributes to this goal by using sustainable construction materials, eco-friendly landscaping solutions and solar power to generate electricity out on site.

Solar power on site

A large temporary bank of solar panels was set up at the Mt Derrimut Road site compound soon after it was built. These panels provide approximately 65% of the site compound's energy needs.

To date this has saved 19.11 tonnes of carbon dioxide, which is the equivalent of 79,000 kilometres driven by a car.

Permanent solar panels will be installed on the bus interchange when it is built. They will help power Deer Park Station sustainably into the future.

Deer Park (Poly)roks!

We've celebrated a construction industry first at Mt Derrimut Road, using a recycled plastic aggregate called Polyrok in the concrete roof of the new Deer Park Station buildings.

This sustainable concrete mix has diverted half a tonne or an estimated 125,000 pieces of soft plastic from landfill.

This is one way the Level Crossing Removal Project is striving to replace traditional materials with more sustainable alternatives.

In addition to the use of Polyrok, crews will also apply a special coating to the asphalt in the Deer Park Station car parks to reduce the levels of heat absorbed from the sun, known as the urban heat island effect.



Solar panels power the Mt Derrimut Road Level Crossing Removal Project site office



A team member holds a piece of Polyrok

Did you know?

Here are some of the facts and figures behind the work at Mt Derrimut Road.



1,069

The number of reinforced concrete panels used to build the retaining walls of the Mt Derrimut Road rail bridge.

The retaining walls hold compacted soil in place to support the rail line as it rises from the ground at each end of the bridge.



The first retaining wall panels were placed in September 2022

23,000



Vehicles per day that can now travel on Mt Derrimut and Station roads without being held up by boom gates.



Vehicles use the upgraded intersection for the first time

50,000



The number of trees, plants and grasses that will be planted in the Deer Park Station precinct during the landscaping phase of the project.

Planting will include more than 500 saplings that will grow into mature trees for generations to come.

When landscaping is finished, there will be greater plant coverage in Deer Park, supporting the aims of the 'Greening the West' strategy developed to increase tree foliage and plant life in the western suburbs.



The new Deer Park Station after five years - artist's impression, subject to change

63



The weight of the concrete used to build the Mt Derrimut Road rail bridge is equivalent to 63 blue whales.



The rail bridge during construction

Progress on the precinct

Works are continuing at the new Deer Park Station as we progress with building the new precinct, car park, multi-bay bus interchange and landscaped forecourts.

The ramp to Platform 2, public waiting room, toilets and northern car park are now open. Bicycle parking is available with full Parkiteer facilities to become available in the coming months.

While works continue, temporary access changes are in place. All access points to the station platforms will be available by December.

Works continue on the southern lift shaft



Deer Park residents Douglas and Annie with the aloe they planted in 1975

Preserving local environmental heritage

Prior to works beginning on the Mt Derrimut Road level crossing removal, the team put measures in place to protect locally significant plants, including a giant succulent, almost half a century old, that stands near the western end of the new rail bridge.

The four-metre-tall succulent, known as an aloe arborescens, was planted

in 1975 by local residents Douglas and Annie as part of a rock garden at the end of their street.

Douglas said he was pleased with the team's efforts to preserve the plant and their willingness to work with locals during the project.

Keeping in touch

- @ To stay up to date, subscribe to email updates at levelcrossings.vic.gov.au/subscribe and select Mt Derrimut Road, Deer Park
- 📞 Subscribe to SMS updates by texting **Derrimut** to **0427 840 967**
- i If you have any questions or would like more information, call us 24/7 on **1800 105 105** or email contact@levelcrossings.vic.gov.au
- f Follow us on social media or send us a private message on our Facebook page

Thank you for your patience while we build your new Deer Park Station



SALAMAT آپ کا شکریہ GRACIAS GRAZIE
 CẢM ƠN 谢谢您
THANK YOU
 謝謝您 धन्यवाद ΕΥΧΑΡΙΣΤΩ
 पतनहार वि ब्लागोडारिमे شكراً لك
 TEŞEKKÜRLER HVALA VAM

Project timeline

- ✓ **Early 2021**
Concept designs released
Community engagement
- ✓ **Mid 2021**
Site investigations
- ✓ **Early 2022**
Final designs released
Early works and site establishment
- ✓ **Mid 2022**
Major construction started
- ✓ **April 2023**
Level crossing removed
New Deer Park Station opened
- **Late 2023**
Station precinct and car park complete
Landscaping complete
Bus interchange complete
- **2024**
Project complete

*Timeline subject to change.

levelcrossings.vic.gov.au

contact@levelcrossings.vic.gov.au

1800 105 105 (call anytime)

Please contact us if you would like this information in an accessible format. If you need assistance due to a hearing or speech impairment, visit relayservice.gov.au



For languages other than English, please call 9209 0147.

