



# LEVEL CROSSING REMOVAL

PROJECT

Heatherdale

2

HEATHERDALE ROAD

# LEVEL CROSSING REMOVAL UPDATE

ISSUE #04 MAY 2016

Removing 50 dangerous and congested level crossings across Melbourne will transform the way people live, work and travel across metropolitan Melbourne and improve safety for drivers and pedestrians.

Thank you for your patience and understanding during the Heatherdale Road level crossing removal construction works.

## CONTACT US

- levelcrossings.vic.gov.au
- Heatherdale@levelcrossings.vic.gov.au
- 1800 762 667
- Level Crossing Removal Authority  
GPO Box 4509  
Melbourne VIC 3001

Follow us on social media  
@levelcrossings



 Translation service  
For languages other than English,  
please call 9280 0780

## More than just the removal of the level crossing...

**We are creating a valuable community asset designed to best meet the needs of commuters and the local neighbourhood.**

As well as removing the level crossing, we are building a new state of the art station on the east side of Heatherdale Road and providing a new walking and cycling path.

The successful delivery of a project this large and complex depends on quality design, innovative construction and inclusive community participation. Best practice design principles have been applied to ensure:

- safety
- connectivity and accessibility
- sustainability and sensitivity to green spaces
- visual amenity
- local culture and heritage inclusiveness.

We are committed to achieving a high quality outcome for the community. The design has evolved over an iterative process to make improvements in response to feedback from the community.

The first stage of detailed design is nearing completion.



## GET PROJECT UPDATES STRAIGHT TO YOUR INBOX

Register to have project updates at your fingertips by signing up at  
<http://levelcrossings.vic.gov.au/subscribe>

Artist impression of proposed station design (subject to change)



## Walking and cycling path

We are proceeding with detailed design of the walking and cycling path after Whitehorse Council endorsed the alignment.

The path forms part of the ten kilometer connection from Box Hill to Ringwood.

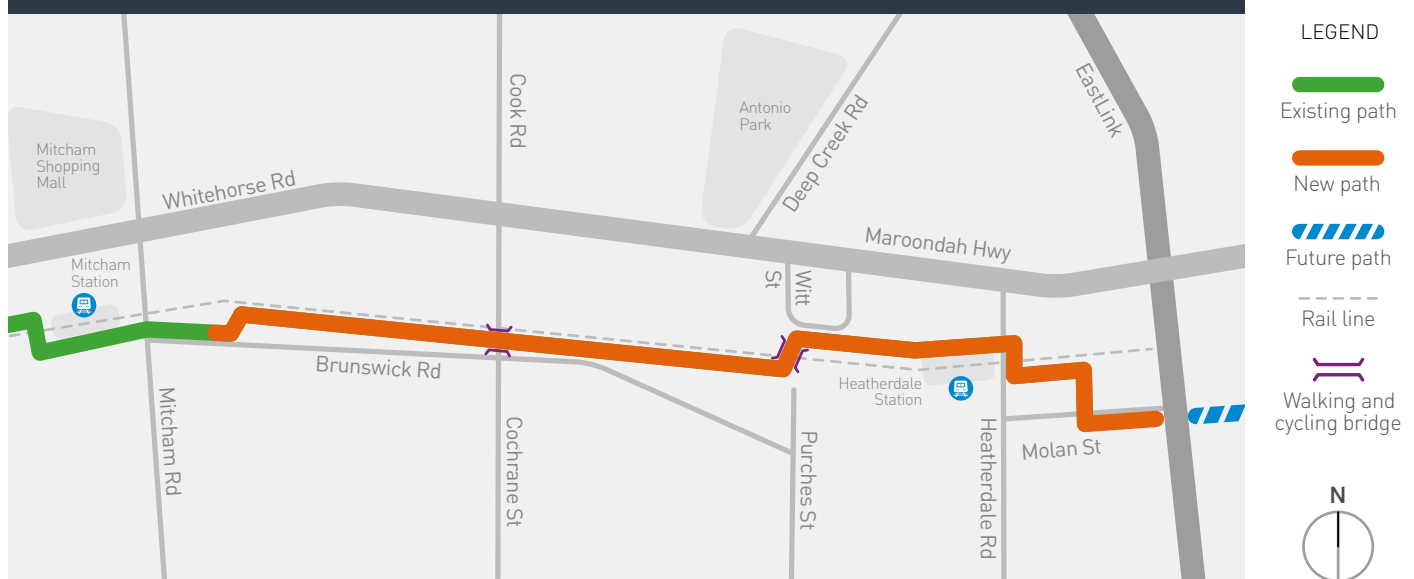
It will be constructed to connect with the existing path on the north side of Brunswick Road immediately west of Creek Road and future EastLink bridge path.

To connect the community either side of the rail line and minimise tree removal the path has been realigned from the south side of the rail corridor at Purches Street to the north side at Tennyson Street.

Safety is paramount when developing walking and cycling paths. The design of the path separates pedestrians and cyclists from vehicles and includes a bridge over Cochrane Street and the rail line at Purches Street.

A signalised crossing over Heatherdale Road directly adjacent to the Heatherdale Road station entry will provide easy access to the new station.

### Heatherdale Section of the Box Hill to Ringwood Walking and Cycling Path Scheme



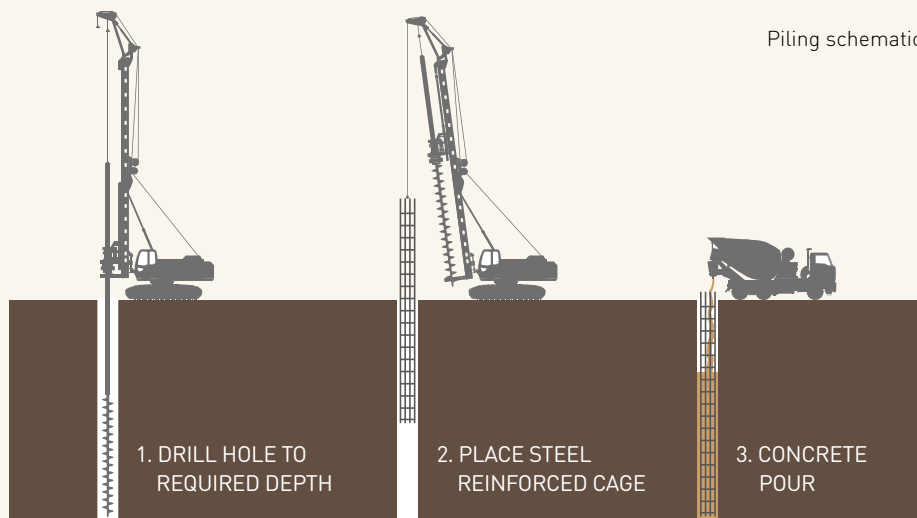




Piling works at Heatherdale Road level crossing, Saturday 19 March 2016.

# Team talk

**IT IS AN EXCITING TIME WITH PILING WORKS FOR THE BRIDGE AND NEW STATION STRUCTURE WELL UNDERWAY.**



**Gary Fox,**  
Senior Project Engineer  
explains the piling process.

Piling works for the bridge and new station began in March. Gary Fox, Senior Project Engineer explains, "Bored piles are a type of foundation that are being used for the station building, platforms and Heatherdale Road bridge. The reinforced concrete pile design was adopted due to the weathered siltstone and clay ground conditions"

"Approximately 29 piles for the bridge and 190 for the station will be constructed. A piling rig will drill

down to approximately 12 metres for the bridge and between 7-11 metres for the station foundations. A steel reinforced cage will then be lowered into the bore holes. Finally concrete is poured into the hole and allowed to cure to reach design strength"

Piling works will continue until June 2016. The next phase of works for the station after piling includes steel framework erection, installation of station building and construction of concrete ramps and walkways.

Important steps have now been completed in preparation for bridge abutment and road works in early July at the level crossing. This will enable the excavation of the lowered rail line and construction of the bridge deck over the rail corridor. These works will be undertaken early next year.

## FOR YOUR DIARY...

### July works

Major construction works are scheduled in early July. During this time Heatherdale Road and the intersection of Heatherdale Road and Forster Street will be closed from 8 pm Friday 1 July until 5 am Monday 18 July. Traffic shall be detoured via Mitcham Road or Wantirna Road and Canterbury Road to access Maroondah Highway and via Purches Street to access Forster Street.

Buses will replace trains on sections of the Belgrave/Lilydale line from Saturday 2 to Sunday 10 July. Normal train services will resume on Monday 11 July.

Construction will include road, drainage, bridge abutment and services relocation works on Heatherdale Road near the level crossing, piling for the new station, station car park upgrades, Purches Street walking and cycling path overpass abutment and embankment stabilisation in the vicinity of the existing station.

More details will be available closer to the time.

Heatherdale Community Action Group meeting



## COMMUNITY ENGAGEMENT

It is our aim to ensure strong community understanding of the project. We continue to provide information regularly to the community including updates on construction progress, upcoming works, impacts, rail and road disruption and areas of special interest.

Earlier this year members of the project team attended the Heatherdale Community Action Group meeting to present further design details. A free coffee morning was held at the station prior to the March weekend works to inform customers about the project and changes to train services.

We welcome the opportunity to present to interested community groups. If you would like to organise an information session for your group meeting or community event then please contact us.

We realise that construction is disruptive to the community and we aim to minimise impact as much as possible. We thank you for your understanding and patience so far as we remove the level crossing and build a new station at Heatherdale Road.



Station coffee morning

## PROJECT TIMELINE

Works are well on the way for project completion mid 2017. This year we have already progressed with bridge abutment and station piling, installation of underground services route, signalling upgrade, car park reconstruction and drainage works.

