

Monthly construction update

Town Hall Station

September 2023

Major construction is continuing in the CBD at the site of the future Town Hall Station. This update provides an outline of current and upcoming works in your area in September 2023.

Construction snapshot

Construction works within the Town Hall Station precinct during September 2023 include:

- Structures and lining works within the central cavern
- Station entrance structure construction within the Flinders Quarter site
- Building renovation and construction of the 'Flinders Link' passenger connection within Campbell Arcade
- Lift installation works within the Degraves Subway at Flinders Street Station
- Station build out works at City Square
- Reinstatement works on Flinders Street requiring northern footpath closure at the Flinders Quarter site entrance
- Train testing through the tunnel.

Further information on these works can be found overleaf or at metrotunnel.vic.gov.au

When are we working?



Normal construction hours

7am to 6pm, Monday to Friday
7am to 1pm, Saturdays.



Out of hours

Some works are required to take place out of normal construction hours.



24 hours

24 hour works are sometimes required during peak construction activities.

Construction partner:



Cross
Yarra
Partnership



Works in your area

Structures and lining

24-hours, Monday to Sunday, ongoing



- Works to construct the underground station are continuing in the Town Hall Station precinct
- These works involve the installation of waterproofing materials, steel, and concrete within the central cavern and adits
- There will be regular truck movements to deliver steel and concrete to the acoustic shed at Federation Square and to the cavern via City Square
- Due to road permit requirements, large plant will occasionally be delivered and demobilised from the site outside of standard construction hours
- Oversize deliveries require the use of semi-trailers, trucks, and a tower crane and are expected to generate low to medium levels of noise and vibration.

City Square concrete pump use

City Square – Collins Street and Flinders Lane

6:30am to 8pm, Monday to Friday,
6:30am to 1:30pm Saturdays,
10pm to 6am Monday to Friday
(limited night shifts, as required)



- Concrete pumps are operating on Collins Street and Flinders Lane to support concrete pours within the cavern and adits
- Concrete trucks will access the loading bays on Collins Street and Flinders Lane to supply the concrete pumps and the pumps will generate periods of medium level noise and some vibration
- The areas around the concrete pump have been hoarded to protect pedestrians moving
- Concrete pours must be continuous to ensure structural integrity and therefore may occasionally continue outside of standard construction hours
- Concrete pours and concrete finishing works involve regular deliveries, and the use of concrete trucks, concrete pumps, concrete vibrators, diesel generators and diesel-powered concrete finishing equipment.

City Square pre-cast panel deliveries

Flinders Lane and Collins Street loading bays

7am to 4pm, 2 days in early and mid-September



- Pre-cast deliveries will be lifted off trucks by a mobile crane and then lifted into site by the tower crane
- The next Collins Street delivery is scheduled to take place Tuesday 5 September, and the next Flinders Lane delivery is scheduled to take place Wednesday 13 September. Dates are subject to change, check signage in area for updates
- During Flinders Lane lifts, Flinders Lane will be blocked to traffic from 7am to 4pm between Russell Street and Swanston Street
- Driveway access will be maintained to properties on Flinders Lane between Russell Street and Regent Place, and vehicles exiting carparks on Flinders Lane

will be required to travel east to Russell Street. Traffic management and a detour using Flinders Street or Collins Street will be in place

- Access to properties on Flinders Lane between Swanston and Elizabeth streets will need to enter Flinders Lane via Elizabeth Street under a contraflow arrangement
- During Collins Street lifts, Collins Street westbound will be blocked to traffic from 7am to 4pm between Russell Street and Swanston Street
- Local access will be maintained to properties
- between Russell and Swanston streets, and vehicles exiting Regent Place onto Collins Street will need to turn right onto Collins Street
- Access to properties on Collins Street between Swanston and Elizabeth streets will need to enter Collins Street from Elizabeth Street
- Pedestrian access will be maintained during these road closures.

Station entrance construction

City Square site

7am to 1am, Monday to Friday
7am to 2pm, Saturdays



- Works will continue to build the slabs, walls, and columns, and install mechanical, electrical and plumbing infrastructure within the City Square shaft
- These works involve the installation of waterproofing materials, steel, and concrete
- These works will include the installation of infrastructure to support mechanical, electrical and plumbing services
- There will be regular truck movements to deliver steel and concrete to the City Square site via the Collins Street and Flinders Lane loading bays
- These works are expected to generate low levels of noise and vibration
- The tower cranes will be used as required until 1am weeknights and 2pm Saturdays. This will generate intermittent low to medium levels of noise.

Station entrance construction

Flinders Quarter site



Shotcreting, waterproofing and steel fixing

24-hours (as required) Monday to Saturday
8am to 4pm, Saturdays and Sundays

Concrete pours

24-hours, 7 days (as required)

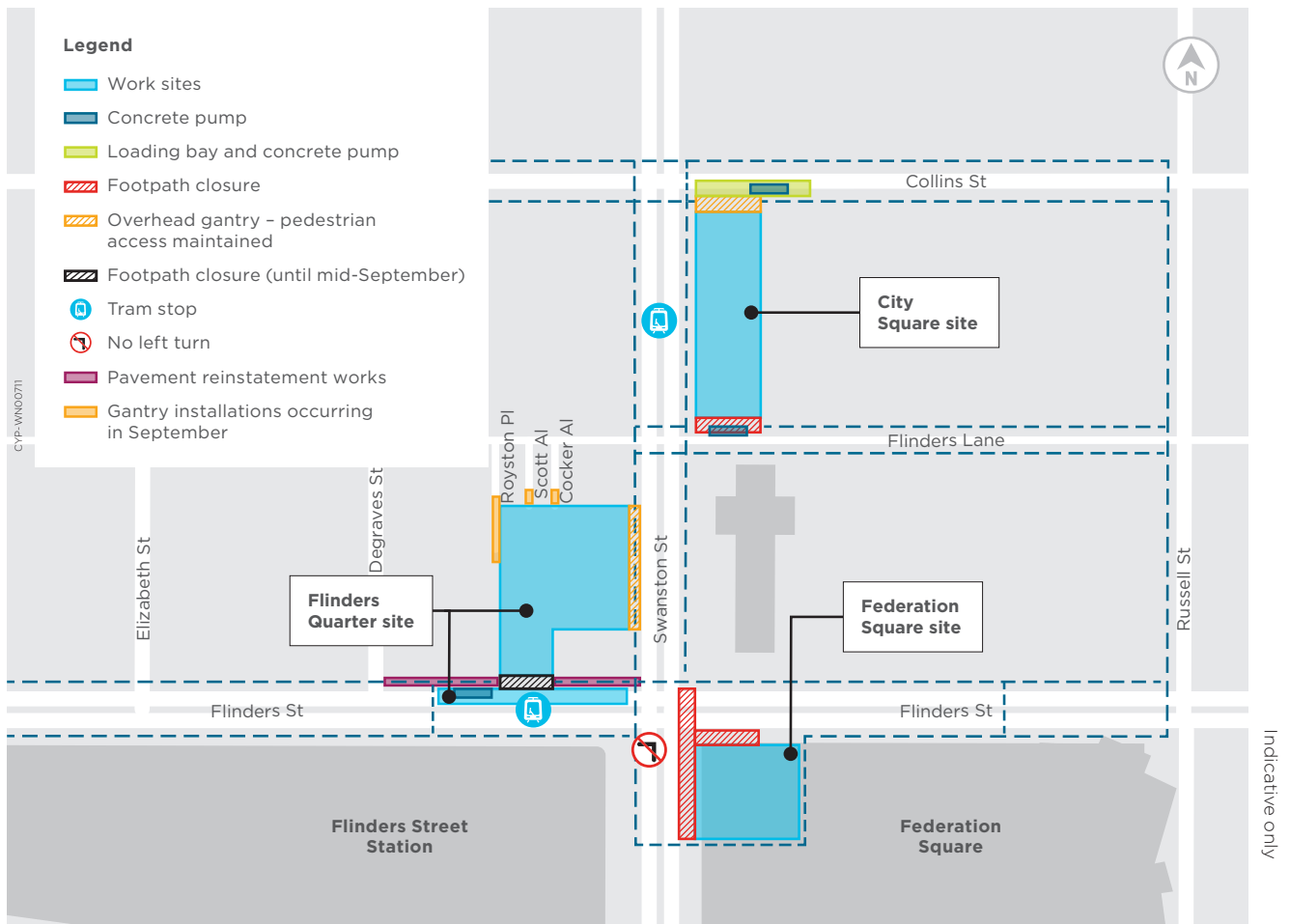
Tower crane

7am to 1am (as required)

Mobile crane

7am to 1am (as required)

- The tower crane will operate as required until 1am weeknights and Saturdays, and 8am to 6pm Sundays, and may generate intermittent periods of medium levels of noise
- A 200-tonne mobile crane will be used as required until 1am weeknights and Saturdays, and 8am to 6pm



Sundays, and will generate intermittent medium levels of noise as equipment is lifted into the site

- Trucks will access the Flinders Quarter site to and from via the Swanston Street driveway
- Construction of the shaft floors, walls and columns involves steel fixing, waterproofing, installing formwork and concrete pours
- Steel fixing and shotcreting works will take place below ground floor level, 24 hours on weekdays as required
- Shotcrete works require the use of a concrete pump and concrete trucks accessing the site as required throughout the works
- Waterproofing and formwork installation works continue under the ground floor level, 24 hours a day on weekdays and between 8am and 4pm on weekends. These works involve the use of hand tools, diesel generators, power tools, a telehandler, and a tower crane, and are expected to generate low levels of noise
- Concrete pours must be continuous to ensure structural integrity and therefore may occasionally continue outside of standard construction hours
- Concrete pours and concrete finishing works involve regular deliveries, and the use of concrete trucks, concrete pumps, concrete vibrators, diesel generators and diesel-powered concrete finishing equipment
- Concrete pours are expected to generate medium levels of noise and vibration, and concrete finishing works are expected to generate low levels of noise and vibration

- Where possible, every effort will be made to undertake concrete pours during standard construction hours to minimise disruption to surrounding properties.

Oversize deliveries

Flinders Quarter site

10pm to 7am, ongoing



- Oversize trucks with deliveries will access the Flinders Quarter site via the Swanston Street driveway
- Due to road permit requirements, large plant will occasionally be delivered and demobilised from the site outside of standard construction hours
- Oversize deliveries require the use of semi-trailers, trucks, and a tower crane and are expected to generate low to medium levels of noise
- Directly impacted stakeholders will be provided more information prior to deliveries taking place outside of standard construction hours.

Gantry installation works

Royston Place, Scott Alley and Cocker Alley

24-hours, commencing September for up to 4 weeks



- During September works will commence to install overhead protection gantries at the Flinders Quarter site boundaries on Royston Place, Scott Alley and Cocker Alley (refer to map for locations)
- These gantries will cover approximately one metre overhead from the site boundaries and will allow above ground construction at the site to take place whilst the laneways remain operational
- Once the protection gantries are installed, they will not impact on the operation or access to the laneways, or encroach on windows, doors or balconies of surrounding buildings
- Works to install the gantries will include structural steel installation and the use of rattle guns.

Site shed removal works

Flinders Quarter site – Swanston Street

24-hours, commencing September for up to 8 weeks



- In September, works will commence to remove the site sheds which sit above Swanston Street, adjacent to the Flinders Quarter site
- The removal of this infrastructure will require some out of hours works to minimise the impact on pedestrians and tram services
- These works will require the use of a mobile crane, rattle guns, hand tools and a diesel-powered boom lift and will generate some periods of medium to high level noise
- Some short-term footpath closures of Swanston Street at the site frontage may be required to undertake these works. Access to businesses will be maintained and pedestrians will be diverted to Swanston Street east at Flinders Street and Flinders Lane.

Flinders Street reinstatement works and northern footpath closure

24-hours, ongoing until mid-September 2023



- A program of reinstatement works is currently underway on Flinders Street between Degraves and Swanston streets
- To support these works, a northern footpath closure directly adjacent to the site is currently in place until mid-September, requiring pedestrians to cross over to the southern footpath to continue along Flinders Street (refer to map for location and pedestrian detours)
- Access to businesses and properties is being maintained at all times
- Following the footpath closure, Flinders Street eastbound will reopen to traffic in October, improving traffic flow through the CBD
- Throughout September, works include the demolition of temporary structures beneath the footpath and service connections

- These works will generate some periods of medium to high levels of noise and every effort will be made to undertake noisier works during the daytime

Pavement works requiring expanded footpath closures

- Works are underway to remove and replace pavers on the Flinders Street northern footpath between the site entrance and Degraves Street, and outside Dangerfield and Young and Jackson (refer to map)
- These works will take place 24 hours a day and are planned to minimise impacts to businesses during operating hours, and will require expansion of the existing closure area during times when works are being undertaken
- These works will include the use of a non-destructive digging truck, excavator, and bobcat, and are expected to generate some periods of high level noise, and some vibration.

Flinders Link pedestrian connection construction

Campbell Arcade

7am to 6pm, Monday to Friday, and 7am to 1pm, Saturdays, ongoing



- Works to construct the future underground pedestrian connection between the new Town Hall Station and Flinders Street Station, known as the 'Flinders Link', will continue within the closed Campbell Arcade underpass.

Degraves Subway

7am to 6pm, Monday to Friday, and 7am to 1pm, Saturdays, ongoing

- Works to install lifts between the Degraves Subway and platform level at Flinders Street Station will continue
- These works will be carried out during the day behind the blue hoarding on all Flinders Street Station platforms
- There will be no impacts to surrounding buildings. Commuters may experience intermittent noise for the duration of these works.

Traffic and transport impacts

Temporary

- A traffic closure on Collins Street westbound, between Russell Street and Swanston Street, scheduled for Tuesday 5 September from 7am to 4pm, for precast deliveries
- A traffic closure on Flinders Lane between Russell Street and Swanston Street, scheduled for Wednesday 13 September from 7am to 4pm, for precast deliveries
- Traffic management and signed detours for both these Collins Street and Flinders Lane closures will be in place and pedestrian and local access will be maintained
- Closure of the Flinders Street northern footpath at the site entrance, between Dangerfield and Flora Indian Restaurant, until mid-September 2023 for reinstatement works
- Late night closures of the Flinders Street northern footpath, between Swanston Street and Degraves Street, from 10pm to 6am for pavement works
- Some short-term closures of the Swanston Street western footpath, adjacent to the Flinders Quarter site, during site shed and gantry removal works.

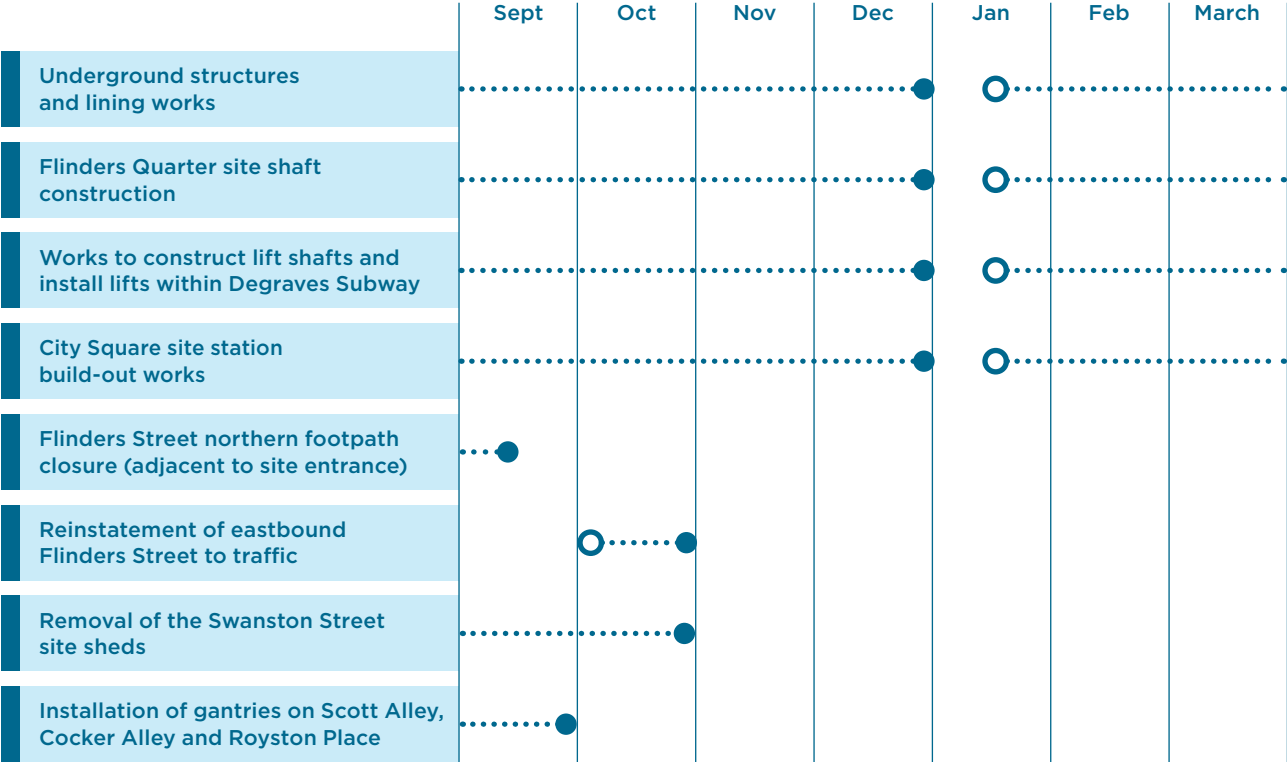
Ongoing

- Ongoing closure of Flinders Street eastbound lanes between Swanston and Elizabeth streets
- Ongoing long-term closure of the southern footpath on Flinders Street adjacent to the Federation Square site, with pedestrian diversions in place through Federation Square
- Ongoing closure of the left turning lane from St Kilda Road to Flinders Street
- Temporary closure of the Flinders Street north-south pedestrian crossing between St Paul's Cathedral and Federation Square
- Temporary holding of traffic on Flinders Lane, Swanston, and Collins streets for up to three minutes to enable the delivery of equipment and materials
- Ongoing use of boom gate and swing gate controls to pedestrian traffic on Swanston, and Collins streets to facilitate safe truck ingress and egress
- Intermittent stopping of pedestrians on the corner of Swanston Street and Flinders Lane for the egress of construction vehicles
- Concrete trucks will intermittently park in the loading bay on Collins Street, adjacent to the City Square site for up to 30 minutes to enable concrete testing to take place
- Full closure of Campbell Arcade whilst Flinders Link pedestrian connection works take place
- Full closure of Degraves Subway from Flinders Street Station while lift installation works take place.

Concept only





Look ahead for 2023 - 2024



Program is indicative and subject to change

More information

 metrotunnel.vic.gov.au
 1800 105 105
(24 hours a day, 7 days a week)
Rail Projects Victoria
PO Box 2392, Melbourne, VIC 3001

 Interpreter Service (03) 9209 0147

It should be noted that this information is current at the time of printing, however due to unforeseen circumstances, changes may occur. Please visit railprojects.vic.gov.au for the latest updates.