



NARRE WARREN-CRANBOURNE ROAD UPGRADE

NOVEMBER 2023



We're building extra lanes and upgrading intersections on Narre Warren-Cranbourne Road to make it quicker, easier, and safer to get you where you need to be.

The new intersections at Linsell, Majestic and Spirit boulevards, Thompsons Road and Kingdom Drive are open and are providing safer journeys for motorists with the introduction of traffic lights and lane and road widening.

We've started implementing safety improvements along the upgrade, including changing Gwenton Avenue, Main Street, Brindalee Place and Loch and Latrobe streets to left in, left out only.

We'll continue implementing permanent access changes over the coming months. For more information on access changes and left in left out streets, please visit bigbuild.vic.gov.au/narrewarrencranbourne

The upgraded intersection at New Holland Drive recently re-opened and is providing safer access to the nearby school and sporting precinct.

When Lyall Street re-opens in coming months, it will be aligned with New Holland Drive to provide safer, easier journeys through the new signalised intersection.

In October, we switched traffic onto the new southbound lanes between Majestic Boulevard and Linsell Boulevard.

Before the end of the year we'll have moved all traffic onto the newly built southbound lanes of Narre Warren-Cranbourne Road.

This allows us to continue building the new northbound lanes.

Once complete, this upgrade will make it safer for the 35,000 motorists who travel through this area each day.

Image above: Artist's impression of the new intersection at Berwick-Cranbourne Road and Cameron Street. Subject to change.



Sign up for updates
Subscribe for email and SMS updates
at bigbuild.vic.gov.au/roads-subscribe



Australian Government



WHAT'S COMING UP



Making side roads safer

Since opening New Holland Drive in late September, we've started upgrading the intersection at Lyall Street to create a new, four-way signalised intersection.

Now the new intersection is open at Linsell Boulevard, we've closed Rochester Parade at Narre Warren-Cranbourne Road for upgrade works. We'll continue this work until early 2024.

During this closure we'll;

- relocate underground utilities
- install drainage
- build new pavement
- upgrade the existing signalised intersection
- install barriers.

New intersection

The current roundabout at Berwick-Cranbourne Road, Sladen and Cameron streets will be replaced with a safer, new intersection.

To start major works on this upgrade, Cameron Street is closed at the Berwick-Cranbourne Road roundabout until mid-January 2024.

In contrast to roundabouts, signalised intersections can handle more cars, which will reduce delays. They also provide better visibility and predictability for drivers, cyclists and pedestrians due to defined signal phases.

Detours are in place via South Gippsland Highway and Sladen Street. Delays are expected of up to 20 minutes during peak periods.

During this time, there'll be no right turn from Berwick-Cranbourne Road onto Narre Warren-Cranbourne Road.

Access to traders on Cameron Street is via a temporary entrance on the South Gippsland Highway, near United Petroleum Cranbourne South.

Popping up in Cranbourne

Over the past few months, we've engaged with more than 1,500 locals at several drop-in information sessions in Cranbourne East.

We'll continue to hold community information session to keep you updated about the project and upcoming works.



Find out about events being held near you on our website bigbuild.vic.gov.au/projects/roads/events



Cameron Street open for business

Traders in Cameron Street are open for business during these works. To access these businesses, enter Cameron Street from the South Gippsland Highway. Please continue to support local traders.

What other works are happening

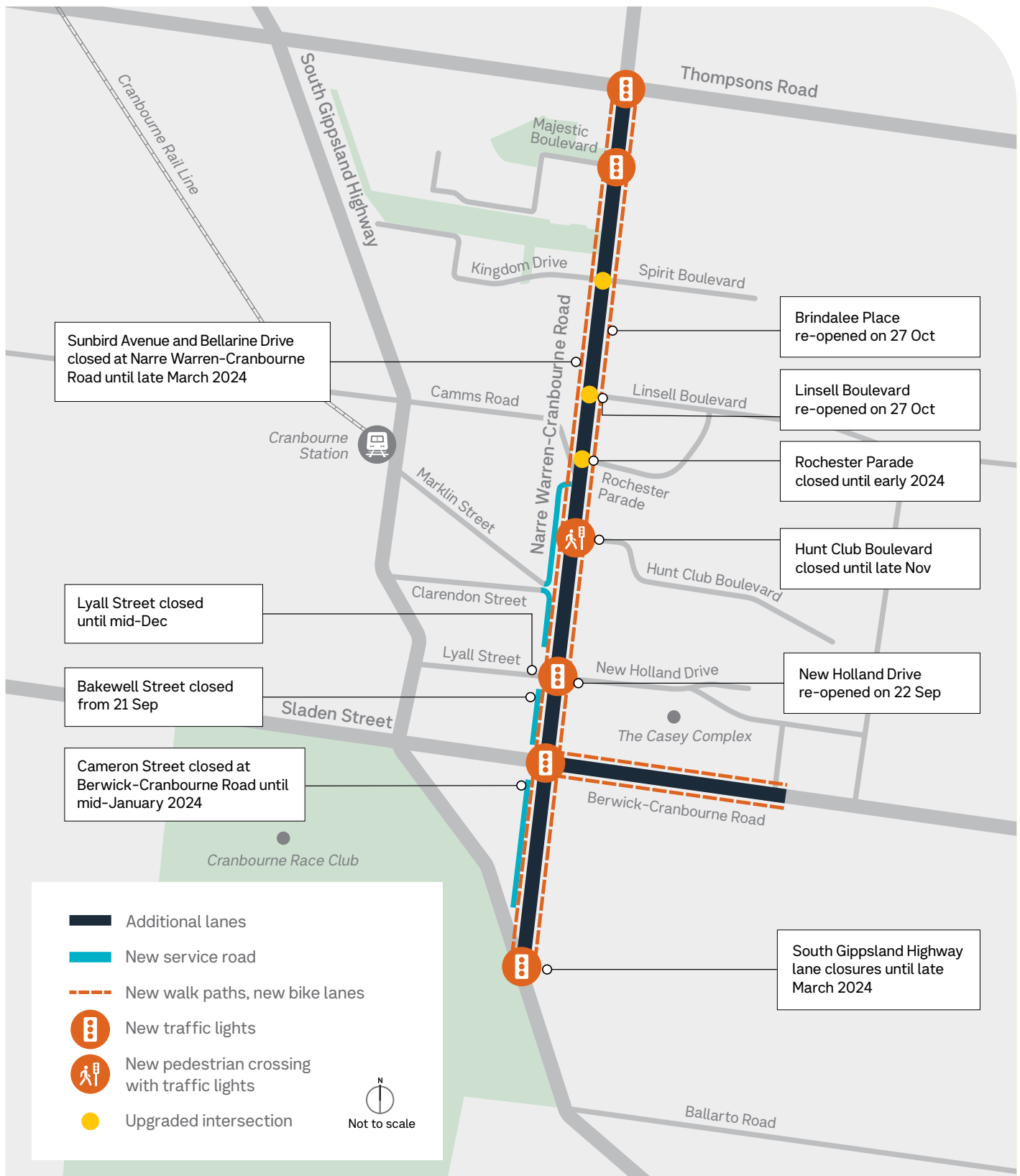
During November and December, we'll undertake our works to connect Cameron Street to the new intersection we'll build at the South Gippsland Highway.

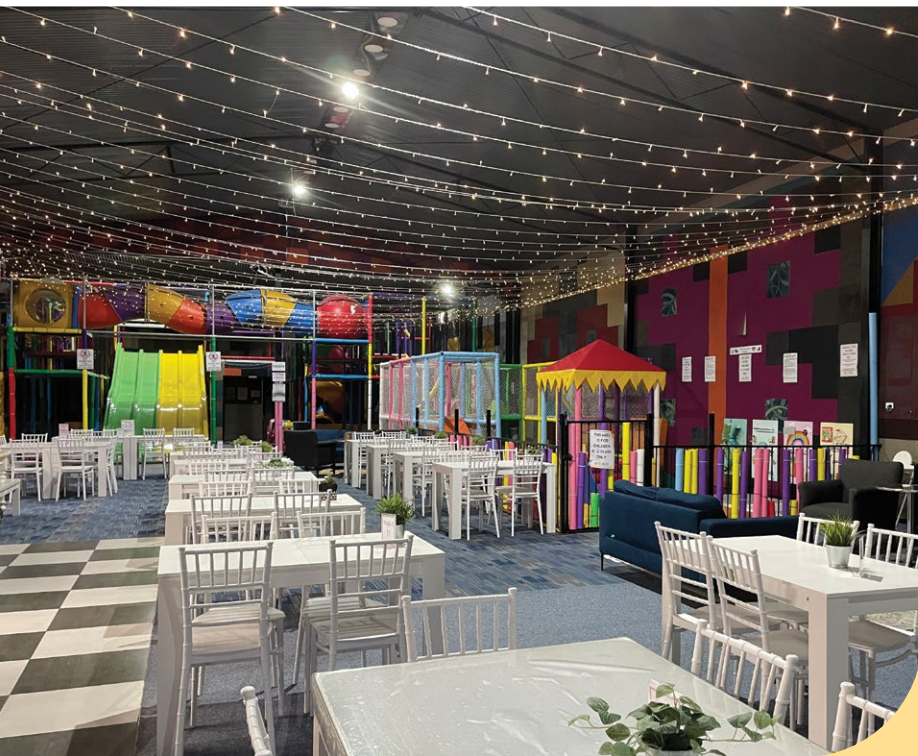
As part of this work, we'll install new traffic lights on the South Gippsland Highway and build additional turning and slip lanes to ease congestion in the area and allow for a quicker and safer journey.

Works continue on other nearby road projects in the south east, including:

- the Hall Road Upgrade
- level crossing removals in the south east.

Search Victoria's Big Build for the latest disruptions.





TRADER PROFILE

Milestones Play and Party Centre

Milestones Play and Party Centre, located in the heart of Cranbourne on Cameron Street, offers an engaging and interactive indoor play space for children aged between 0-12 years of age.


Children love the range of play spaces that include slides, ball pits and multi-level climbing frames. The centre has a dedicated area for children aged from 0-2 years and toddlers.

A unique offering to Milestones is the sensory play sessions, where children can have fun exploring through themed activities incorporating a range of textures, playdough, painting and creative play. The one-hour sensory sessions operate weekdays at 10.30am and 1pm.

This centre offers beautifully decorated party rooms and a team of party experts to help you plan and host memorable birthdays and events.

Parents can relax at the café that offers drinks and food options for adults and children while keeping an eye on their children.

The centre is open Monday to Friday and public holidays between 10am and 5pm, Saturdays between 9am and 5pm and is closed on Sundays for private hire and functions.

 49 Cameron Street, Cranbourne



Cranbourne Carlisle's construction introduction

Our Narre Warren-Cranbourne Road Upgrade project team went back to school for the day when they visited Cranbourne Carlisle Primary School for a construction introduction session.

Our team were excited to tell the students about the major works being delivered by the project, and to help them understand the long-term benefits it will have for their local area.

They were also given the chance to inspect two other essential pieces of construction equipment – a light tower and a compactor.

We're looking forward to more local school interactions over the next few months!



bigbuild.vic.gov.au/roads



For languages other than English please call 9209 0147

1800 105 105 (call anytime)

contact@bigbuild.vic.gov.au



Please contact us if you would like this information in an accessible format. If you need assistance due to a hearing or speech impairment, visit relayservice.gov.au