

Monthly construction update

Town Hall Station

December 2023 and January 2024

Construction of the Metro Tunnel Project's new Town Hall Station is entering a new phase, including works on the station entrances at Swanston and Flinders streets and at City Square, as well as the fit-out of the underground station and reinstatement of community space.

Construction snapshot

Construction works within the Town Hall Station precinct during December 2023 and January 2024 include:

- Station entrance construction within the City Square and Flinders Quarter sites
- Station build-out works
- Station passenger area and operational rooms construction and fit out
- Protection gantry installation within Scott Alley
- Campbell Arcade restoration works including fit-out of the underground passenger connection to Flinders Street Station
- Lift installations within the Degraes Subway at Flinders Street Station
- Reinstatement of the Flinders Street pedestrian crossing between Federation Square and St Paul's Cathedral
- Surface works in Flinders Lane and the adjoining alley ways
- Train testing through the tunnel.

Further information on these works can be found overleaf or at metrotunnel.vic.gov.au

When are we working?



Normal construction hours

7am to 6pm, Monday to Friday
7am to 1pm, Saturdays.



Out of hours

Some works are required to take place out of normal construction hours.



24 hours

24 hour works are sometimes required during peak construction activities.

We are taking a break

The Metro Tunnel Project will take a break from construction on Saturday 23 December 2023 with works recommencing on Monday 8 January 2024.

The site will be secured and security will be on site during the closure.

Members of the project team will be on call. If you have any queries, please phone the Metro Tunnel Information Line on **1800 105 105**.

There may be minor works required during this time. Further information will be provided if works are to occur.

Construction partner:



Cross
Yarra
Partnership



Works in your area

City Square site

24-hours, Monday to Friday
7am to 2pm, Saturdays (as required)



When Town Hall Station opens, the City Square station entrance will lead into an expansive underground passenger foyer, with lifts and escalators transporting passengers down to the customer and ticketing area, towards the train platforms.

Above ground, City Square will be reinstated as a public gathering space, fully landscaped for the whole community to enjoy.

Works occurring over the next two months include:

- Construction of the passenger concourse which involves the use of the tower cranes, concrete pumps, and other tools and equipment to undertake steel fixing, waterproofing, formwork installation and concrete pours
- Installation of infrastructure to support mechanical, electrical and plumbing services
- Concrete trucks will access the loading bays on Collins Street and Flinders Lane. Concrete pours involve regular deliveries, the use of concrete trucks, concrete pumps and concrete finishing equipment
- Major concrete pours can take between 10-20 hours with all concrete pumps in use to achieve the volume of concrete required. Concrete pours must be continuous to ensure structural integrity and therefore may continue outside of normal construction hours
- Ventilation equipment operation will be required during all works below ground, and site lighting will be required for evening and overnight works
- There will be regular truck movements to deliver and remove equipment and construction materials via the Collins Street and Flinders Lane loading bays
- These works are expected to generate low to medium levels of noise
- Steel crypt branches will be installed via the Flinders Lane loading bay to support upcoming ground floor placements
- Escalators are being delivered via Collins Street to be installed on the central platform.

Pre-cast panel deliveries

7am to 4pm for up to 2 days in early December



- Pre-cast deliveries will be lifted off trucks by a mobile crane within the Flinders Lane loading bay, and then lifted into site by the tower crane
- During these lifts, Flinders Lane will be closed to traffic from 7am to 4pm between Russell Street and Swanston Street
- Driveway access will be maintained to properties on Flinders Lane between Russell Street and Regent Place, and vehicles exiting carparks on Flinders Lane will be required to travel east to Russell Street
- Traffic management and a detour using Flinders Street or Collins Street will be in place
- Access to properties on Flinders Lane between Swanston and Elizabeth streets will need to enter Flinders Lane via Elizabeth Street under a contraflow arrangement.

Flinders Quarter site

24-hours, Monday to Friday
7am to 10pm, Saturdays and Sundays
(as required)



When Town Hall Station opens, the station entrance building located on Swanston and Flinders streets will lead into an expansive underground passenger foyer, with lifts and escalators transporting passengers down to the customer and ticketing area, towards the train platforms.

Works occurring over the next two months include:

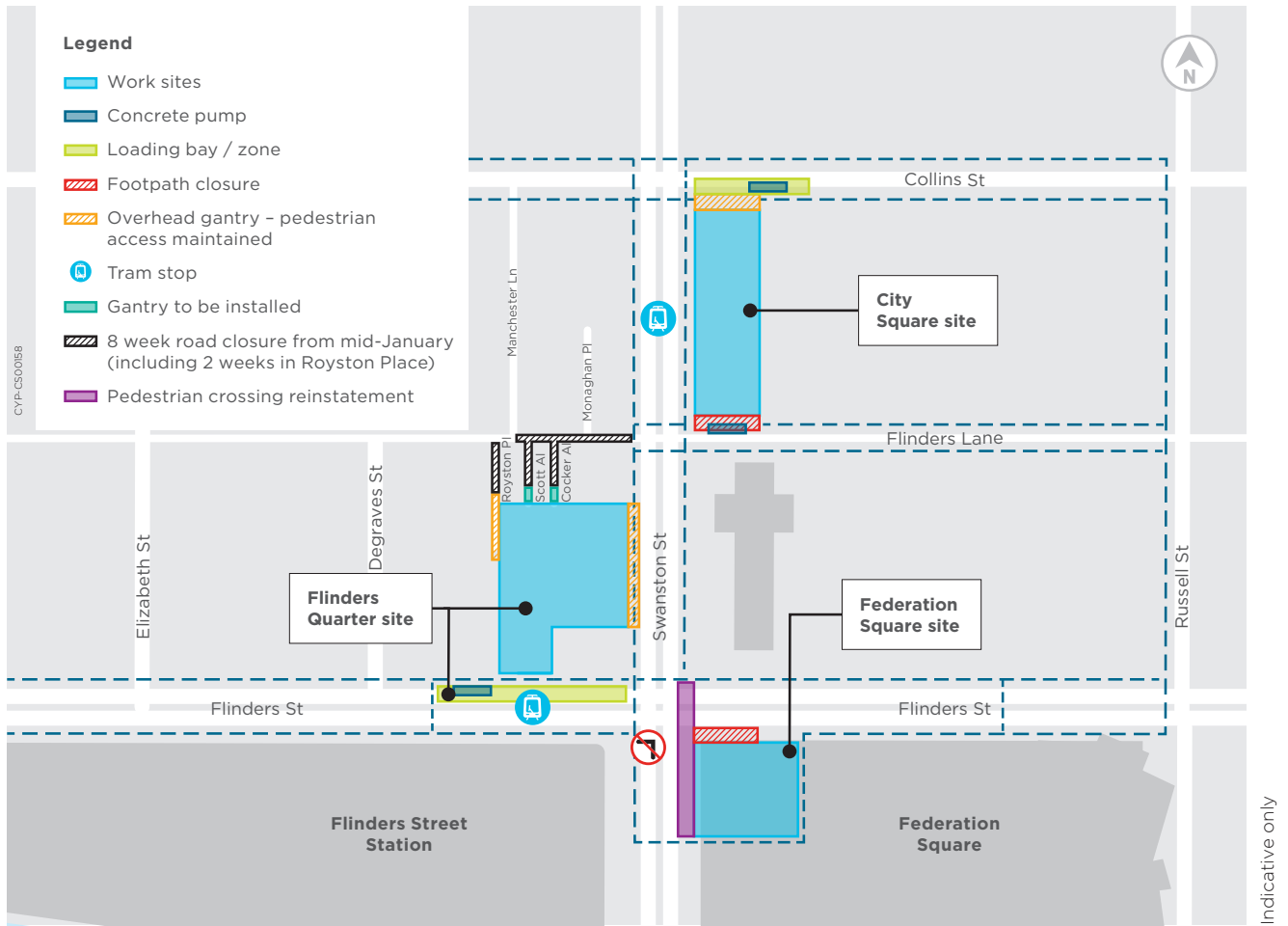
- Construction of the passenger concourse which involves the use of the tower crane, mobile surface cranes, concrete pumps, and other tools and equipment to undertake shotcreting, steel fixing, waterproofing, formwork installation and concrete pours including hydro scabbling
- Installation of infrastructure to support mechanical, electrical and plumbing services
- Concrete pours involve regular deliveries via the loading zone on Flinders Street, and the use of concrete trucks, concrete pumps and concrete finishing equipment
- Major concrete pours can take between 10-20 hours with all concrete pumps in use to achieve the volume of concrete required. Concrete pours must be continuous to ensure structural integrity and therefore may continue outside of normal construction hours
- Ventilation equipment operation will be required during all works below ground, and site lighting will be required for evening and overnight works
- There will be regular truck movements to deliver and remove equipment and construction materials via the Flinders Street loading zone and Swanston Street driveway.
- Due to road permit requirements, large plant will occasionally be delivered and demobilised from the site outside of standard construction hours
- Works will take place on Sunday 10 December to swap the current tower crane to a new tower crane. These works will take place from 7am to 6pm and require some short-term closures of the Flinders Street northern footpath at the site entrance.

Scott Alley gantry installation

10pm to 6am from late November to early December for up to 3 nights



- Works to install overhead protection gantries in the alleyways off Flinders Lane continue, ensuring they are safe to access while above ground construction is underway
- The Royston Place gantry was installed in November and in December the Scott Alley gantry will be installed
- The Scott Alley gantry will cover approximately five metres overhead from the site boundary
- Once the protection gantry is installed, it will not impact on the operation or access to the laneway, or encroach on windows, doors or balconies of surrounding buildings
- Works will include the use of rattle guns, hand tools and the tower crane to erect steel to form the gantry



- These works will generate some periods of medium level noise. Every effort will be made to undertake noisier works during daytime hours
- A final gantry will be installed in Cocker Alley in early 2024.

Underground passenger connection to Flinders Street Station

7am to 6pm, Monday to Friday
7am to 1pm, Saturdays



- Works to restore Campbell Arcade and construct the future underground pedestrian connection between Town Hall Station and Flinders Street Station, known as the 'Flinders Link', are ongoing
- Works to install lifts between the Degraives Subway and platform level at Flinders Street Station will continue. These works will be carried out behind the blue hoarding on the Flinders Street Station platforms.

Federation Square site

24-hours, Monday to Sunday



Federation Square will be an entrance point to Town Hall Station, providing passengers new access to this vibrant public space and the nearby arts and sporting precincts.

Works occurring over the next two months include:

- Construction and fit-out of the station passenger areas and operational rooms, including installation of waterproofing materials, steel, and concrete
- There will be regular truck movements to deliver and remove equipment and construction materials

- Works will take place to demolish the eastern driveway access into the Federation Square shed. The majority of work will take place within the site boundary however some work will take place outside the site
- Slab demolition works will include the use of a jackhammer and an excavator with a hammer attachment and are expected to generate some periods of high-level noise, to the east of the acoustic shed. These works will occur between 7am and 5pm
- In December we will reinstate the Flinders Street pedestrian crossing between Federation Square and St Paul's Cathedral. These works will require some overnight lane closures during the rephasing of traffic lights.

Business support

While the new Town Hall Station will be a significant boost for the local area, construction activities can impact local businesses.

In response to this, our Business Support Team assists businesses through the disruption and any permanent changes that will take place.

Please see the promotion in this notification for **The Westin Hotel**, located at 205 Collins Street, Melbourne. We look forward to promoting more local businesses as the project progresses.

Surface works requiring Flinders Lane and alley way closures

Flinders Lane, Cocker Alley, Scott Alley and Royston Place

What we are doing

Works are progressing to prepare the laneways around the Flinders Quarter site for pedestrian access into the new Town Hall Station.

Both Cocker Alley and Scott Alley will become station entrances while Royston Place will become a service point for the station's waste facility.

During an eight week program of works:

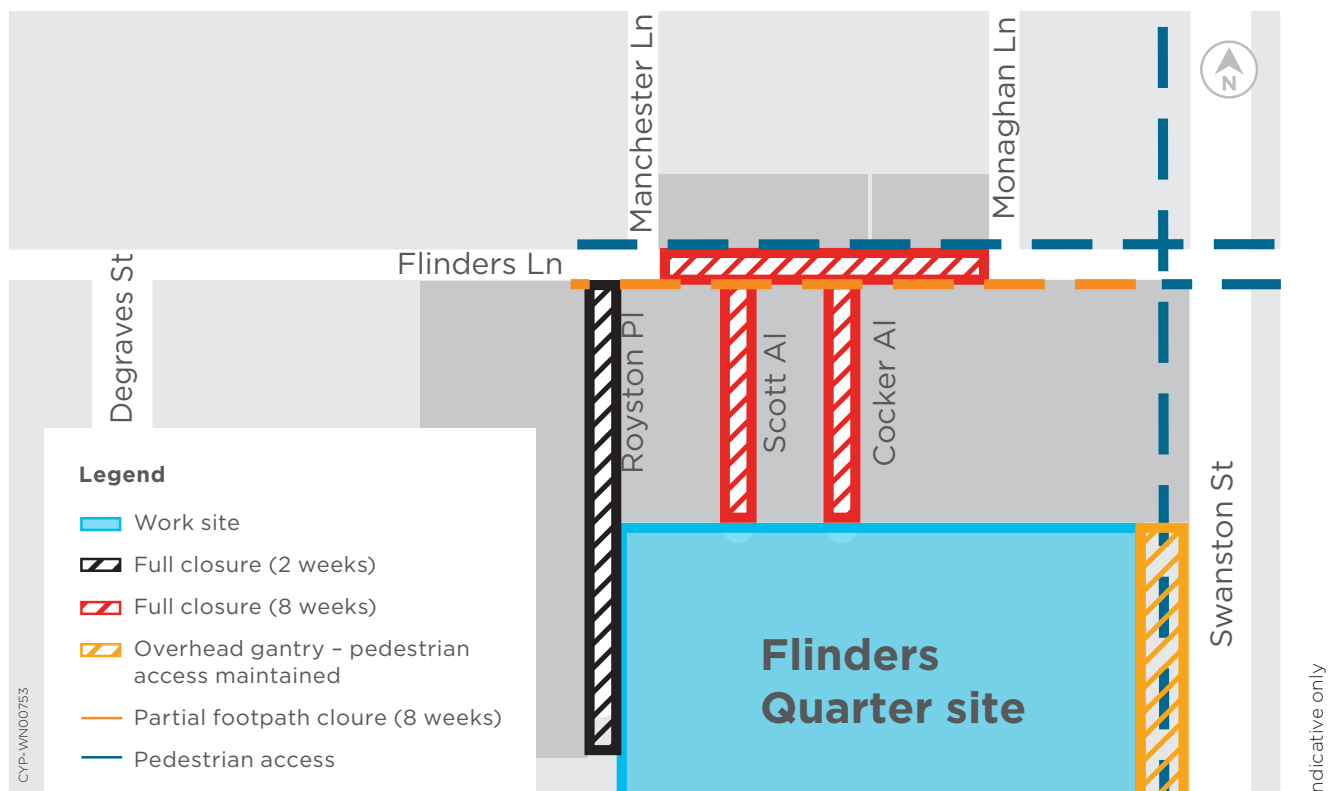
- While Flinders Lane is closed, the southern footpath will be widened so more pedestrians can safely access the new station when it opens
- While Cocker Alley and Scott Alley are closed, essential utility services will be installed and connected to the new station, key equipment will be installed, and laneways re-levelled and paved
- While Royston Place is closed, road resurfacing and a traffic management system for waste vehicles will be installed.

What you need to know

- The section of Flinders Lane between Swanston Street and Royston Place will be closed to traffic from 15 January for up to eight weeks
- Cocker Alley and Scott Alley will also be closed from 15 January for up to eight weeks and arrangements will be in place for businesses and tenants during this period
- Royston Place will be closed for up to two weeks and arrangements will be in place for businesses, carpark and residential access during this time
- Access to residential buildings will be maintained
- Emergency egress from the Nicholas Building onto Cocker Alley will be maintained.

When

- Monday 15 January for up to 8 weeks
- 7am to midnight, 7 days a week (work hours)
- 24-hours, 7 days a week (closure hours)



Traffic arrangements

- During the closure, Flinders Lane will be closed to vehicles between Swanston Street and Royston Place. Drivers travelling from Russell Street down Flinders Lane will be able to access driveways and delivery areas under traffic management
- Driveway access will be maintained to properties between Russell Street and Regent Place, and vehicles exiting carparks on Flinders Lane will be required to travel east to Russell Street under traffic management and a detour using Flinders Street or Collins Street
- For access to properties on Flinders Lane between Swanston and Elizabeth streets, drivers will need to enter Flinders Lane via Elizabeth Street
- Cyclists should observe detour routes and will be able to access properties or delivery areas under traffic management.

Pedestrian arrangements

- Pedestrian access will be maintained along Flinders Lane on the northern footpath
- Residential building access will be maintained to properties on Flinders Lane
- Cocker Alley, Scott Alley and Royston Place will be closed to pedestrians during works. Alternative arrangements will be made with residents and businesses during this time.

Noise and vibration

- Some of the work, such as demolition of the paving and excavation to install utilities, will create high levels of noise. The project team will make every effort to schedule noisy work at times when there is minimum impact to the community
- The majority of these works will take place from 7am to midnight, Monday to Saturdays, with some works required beyond these hours where necessary
- There will be some periods of high-level noise and vibration during day shifts and some periods of medium level noise beyond these hours.

Parking

- During these works parking spaces on Flinders Lane between Swanston Street and Royston Place will be unavailable
- As part of these works we are widening the southern footpath along Flinders Lane outside Cocker and Scott alleys, so more people can use the footpath to access Town Hall Station when it opens
- Two parking spaces will be permanently removed (one loading bay in front of Ashdown House and one disabled parking space in front of Bible House) to accommodate the wider footpath
- The two disabled parking spaces in front of Ross House will remain.

Major milestones achieved in 2023

It has been another big year for the Metro Tunnel Project, which is on track to open in 2025 – a year ahead of schedule.

While continuing build-out of the underground station, here are some key milestones we achieved in 2023 for Town Hall Station:

- Removed the City Square acoustic shed
- Reinstated the Flinders Street northern footpath
- Commenced construction of the station concourse areas
- Started installing architectural fittings on the platform level, including the spectacular orange “ribs” which line the ceiling.

More broadly, across the project we:


- Started running test trains through the Metro Tunnel
- Installed platform screen doors at all five stations
- Installed high capacity signalling along the south-eastern and western rail corridors
- Ran the first High Capacity Metro Trains on the Sunbury Line – these trains are now taking passengers in the morning peak.

For more information on these achievements, visit metrotunnel.vic.gov.au

We want to thank all nearby residents, businesses and community members for their patience and support while we continue to build this major city-shaping project.

More information

 metrotunnel.vic.gov.au

 1800 105 105
(24 hours a day, 7 days a week)

Rail Projects Victoria
PO Box 2392, Melbourne, VIC 3001



Interpreter Service (03) 9209 0147

It should be noted that this information is current at the time of printing, however due to unforeseen circumstances, changes may occur. Please visit railprojects.vic.gov.au for the latest updates.

planning a year-end celebration?

Indulge your senses with an exquisite dining experience at Allegro Restaurant.

Step into the realm of innovative Australian cuisine, expertly crafted by world-class chefs. Nestled amongst the treetops of Collins Street with picturesque city views, Allegro's elegant dining space sets the stage for an enchanting evening.

BOOK NOW

P: 9635.2222

W: allegrorestaurant.com.au



allegro

The Westin Melbourne,
205 Collins Street, Melbourne