

# Progress Street, Dandenong South

Consultation report

December 2023

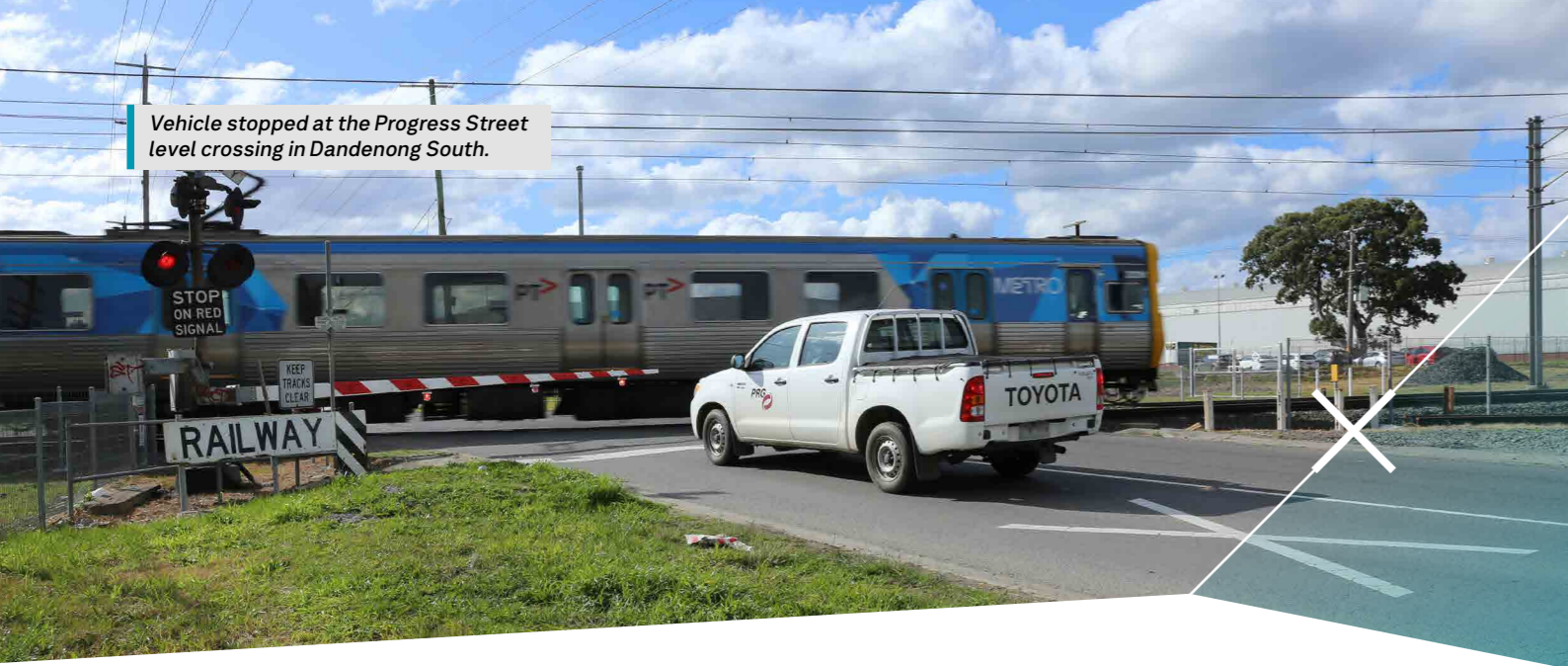


*The existing level crossing at Progress Street, Dandenong South.*

# Contents

<b>Project Overview</b>	<b>2</b>
<b>Introduction</b>	<b>3</b>
<b>What we've heard</b>	<b>5</b>
Key themes	5
<b>Next steps</b>	<b>6</b>

Vehicle stopped at the Progress Street level crossing in Dandenong South.



# Project Overview

The Victorian Government is removing the level crossing at Progress Street, Dandenong South to improve safety and allow more trains to run more often. This level crossing has been fast tracked for removal, with a total of 22 to go on the Pakenham Line, making it level crossing-free by 2025.

We're closing the level crossing and building a new road bridge connecting Progress Street to Fowler Road.

The new road bridge will provide businesses in this busy industrial precinct with safer access to Princes Highway via South Gippsland Highway. The Fowler Road and South Gippsland Highway intersection will also be upgraded with new traffic signals as part of our works to improve traffic flow and ease congestion.

Building a new connection to the South Gippsland Highway means the nearby level crossing at Progress Street can be closed, improving safety and linking the precinct to major arterial roads.

Designs for all level crossing removals are assessed and developed by teams of technical experts, including engineers and construction specialists. Closing the level crossing at Progress Street and building a new road bridge allows for future development, minimises impacts to utilities and is less disruptive to commuters and drivers.

Completion of the Metro Tunnel and plans for a level crossing free Pakenham Line will make room for an additional 121,000 peak hour passengers along the Pakenham and Cranbourne lines every week. With 45% more peak capacity, more trains will run more often.

Major construction will start in 2024.



### Improving safety in Dandenong

By removing all 8 level crossings in the City of Greater Dandenong, we're making journeys safer for all road users and eliminating 5.6 hours of boom gate down time each day in the morning peak.

### Why these level crossings need to go



Will allow **more trains** to run **more often**



Boom gates down for **21 per cent** of the morning peak



**24 trains** run through this level crossing during the morning peak



**5200 vehicles** pass through this level crossing each day



**5 near misses** from 2012 to 2020

# Introduction

Last year we asked the community about their vision and values for the area, as well as feedback to inform the planning approval process.

## How we consulted the community

### Phase 1 – Community engagement

The consultation period was open from 3 October until 30 October 2022, with the community invited to provide their feedback online via the Engage Victoria platform. Consultation included a vision and values survey, planning approval survey and a local business survey.

We asked the community and surrounding businesses to tell us how they move around the area, their vision for landscaping and connectivity. We also asked local businesses about their operations.

Throughout the consultation period we informed the community about the opportunity to provide their feedback. We received over 60 survey responses or comments on the Engage Victoria platform and interacted with the community and local businesses via phone, email and face-to-face conversations.

The opportunity to provide feedback in Phase 1 was promoted in community updates, which were distributed to 7185 homes and businesses within 1.5km of the level crossing.

Two e-updates were also sent during the consultation period to 2,972 subscribers and social media directed the community to the Engage Victoria project page.

### Phase 2 – Business engagement

After conducting the initial phase of engagement, we heard that there was a need for more detailed engagement with the industrial businesses in the area. As a result, a second phase of consultation was undertaken directly with the industrial businesses along Fowler Road, Progress Street and Nathan Road.

This consultation period was open from 31 March 2023 until 12 May 2023, with businesses asked to provide their feedback via a targeted online survey.

During the second phase of consultation, we asked businesses for more detail about their operational hours, truck access requirements, truck movements and connectivity in the area.

Phase 2 was launched via an informative meeting, where senior leaders from LXP and technical experts provided a project overview and addressed questions from surrounding businesses. The project recognised the importance of ensuring safety and accessibility for all road users.

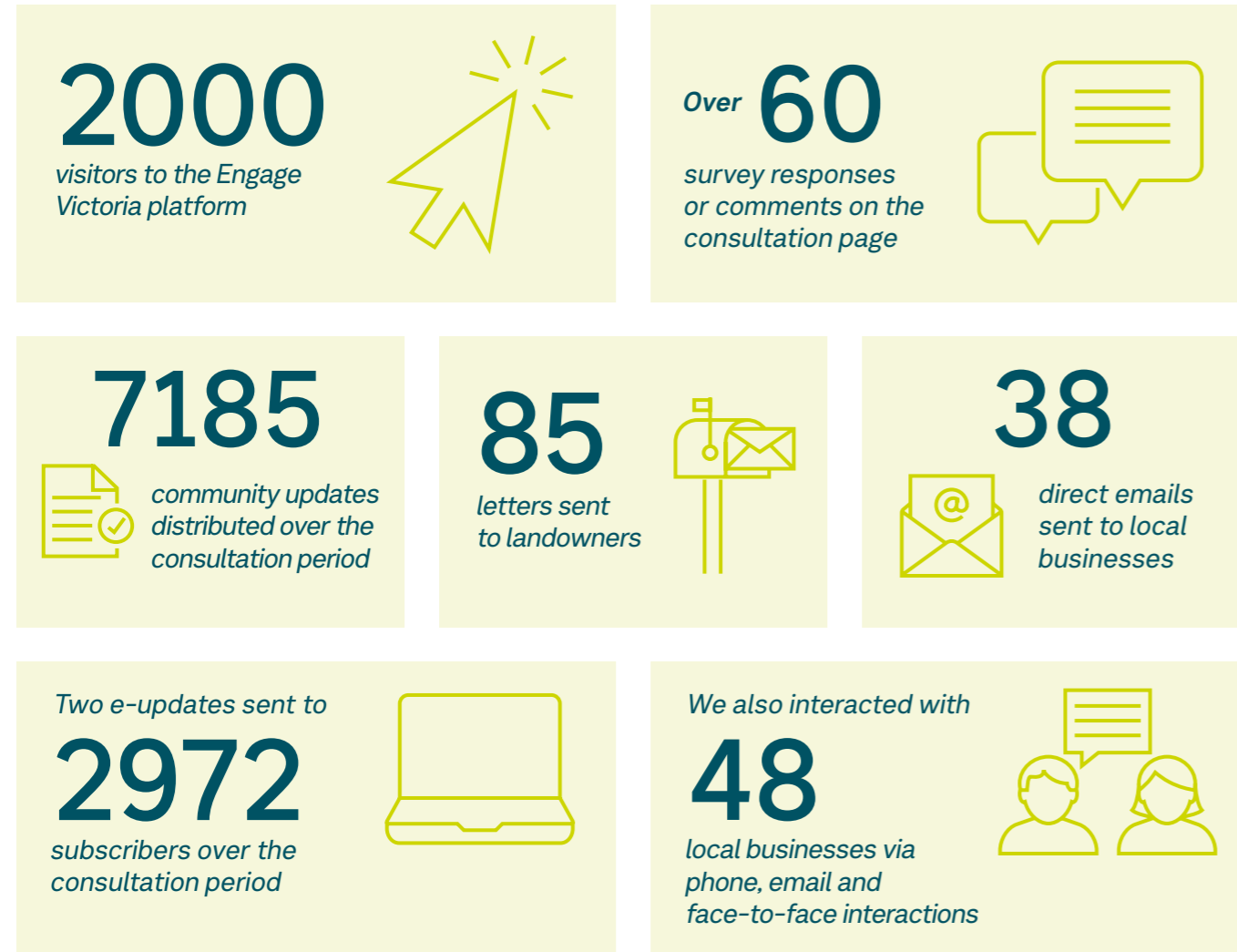
Combined with the feedback gathered in the initial consultation period, our team has a better understanding of the operational requirements around the project and how to deliver the best design for the area.

We'll share more details about what to expect during site establishment and construction in the coming months.

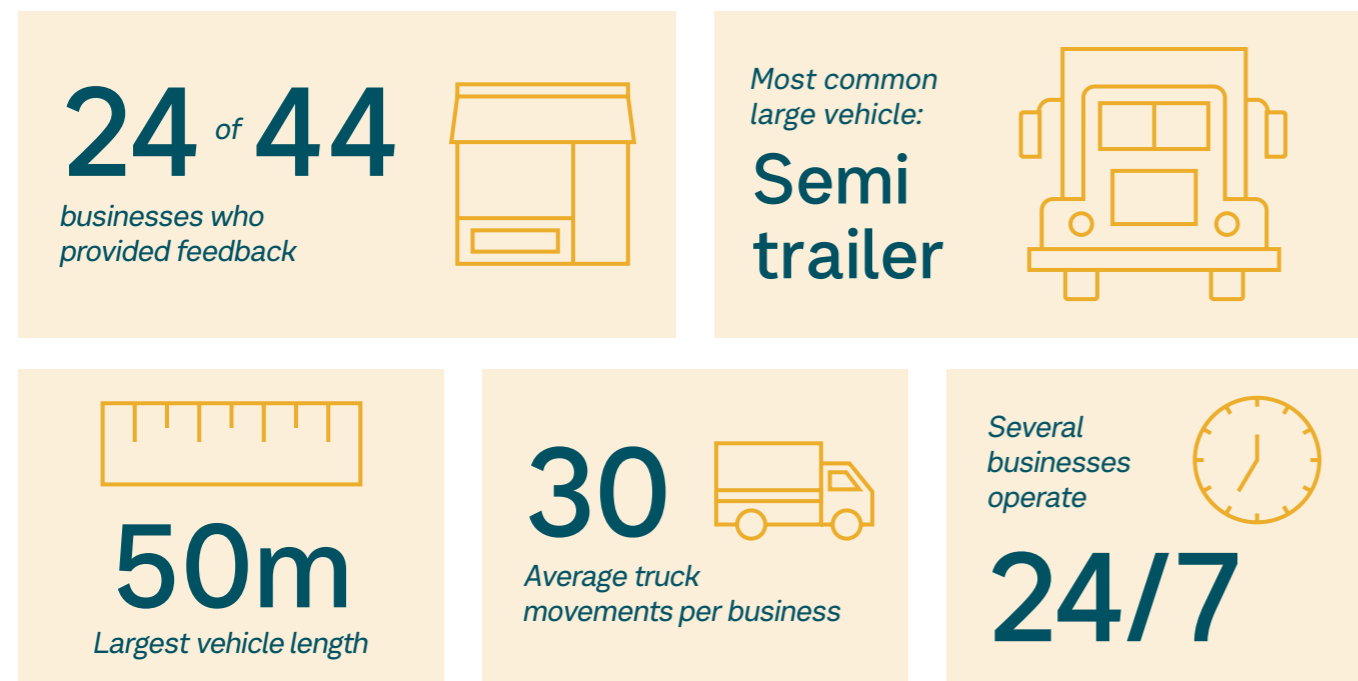


Landscaping around the new South Gippsland Highway road bridge.

## Phase 1 – Community engagement



## Phase 2 – Business engagement



# What we heard

Your feedback helps us get a better understanding of the local area and deliver the best outcome for the community.

### Key themes



#### Safety

You told us safety is a key priority, including allowing semi-trailers and B-Double trucks to safely navigate the new route and bridge.

We also heard your request for Fowler Road to be modified to accommodate additional large vehicles and the increased traffic from Progress Street.



#### Design

The overall design of the new bridge was also of high interest to the community. You told us you would like to see a bridge design that is able to accommodate large trucks and the level of traffic that will use the area.

We learnt design elements on the bridge itself are also important to help improve visual amenity in the area.



#### Landscaping

You want to see planting in the area that celebrates the local natural environment.

This includes more planting around Eumemmerring Creek and planting native landscaping that enhances local flora and fauna.



#### Local businesses

Local businesses told us they were concerned about disruptions to operations and the loss of direct access to Princes Highway.

Some feedback discussed building an extension to the Dandenong Bypass. Although this is out of scope, our works do not preclude this project from occurring in future.

## Next steps

Thank you to everyone who provided feedback about the Progress Street Level Crossing Removal Project.

Your feedback has been invaluable and will help inform final designs for the project.

We'll share more details about the project and what to expect during construction in the coming months.

### Connect with us



Email updates

[levelcrossings.vic.gov.au/subscribe](https://levelcrossings.vic.gov.au/subscribe)



Latest project news

[facebook.com/levelcrossings](https://facebook.com/levelcrossings)



SMS alerts

Text **PROGRESS** to **0447 558 118**

### Project timeline








\* Timeline subject to change.

**levelcrossings.vic.gov.au**

contact@levelcrossings.vic.gov.au



For languages other than English, please call 9209 0147.

1800 105 105 (call anytime)     

Please contact us if you would like this information in an accessible format. If you need assistance due to a hearing or speech impairment, visit [relayservice.gov.au](http://relayservice.gov.au)

