



STATE LIBRARY AND TOWN HALL COMMUNITY REFERENCE GROUP

Kate Walshe, Communications and Stakeholder Engagement Director, CYP D&C

Melinda Kelly, State Library Station Stakeholder Engagement Manager, CYP D&C

Blythe Chidgey, Town Hall Station Stakeholder Engagement Manager, CYP D&C

Mick Lo Monaco, CBD Sustainability Lead, CYP D&C

Teresa Scalise, Director Communications & Stakeholder Engagement, CYP Project CO

15 April 2024



1. Actions from previous meeting
2. Project wide updates
3. State Library Station update
4. Town Hall Station update
5. Sustainability update
6. Creative Program update

Actions from previous meeting

- State Library
- Town Hall



Project Wide Updates

Project Timelapse Compilation



Video to be played



State Library Station Update

State Library Station

La Trobe Street site



State Library Station

La Trobe Street site



Milestones and lookahead

- Tram pole relocation is complete. Utilities (water, drainage, electricity and comms) installation can now commence
- Installation of a permanent gross pollutant trap (GPT) which will reduce stormwater pollutant from entering the downstream council stormwater network when the station is operational, will also commence within the lane closure at La Trobe Street
- Formwork installation, concrete pours, slab and wall construction and mechanical and electrical fit out is continuing underground. Completion of the primary structure will be the next major milestone at the site
- Fit-out and testing of the Melbourne Central escalators is ongoing.



State Library Station



State Library Station

La Trobe Street site



Milestones and lookahead

- To construct the station foyer and to carry out surface works outside of the station entrance, a footpath closure at Swanston Street is proposed (currently subject to approval)
- Elements in the foyer include vertical transport (escalators and lifts), and steel beams to support architectural features such as ribbing, and lighting
- One of the first elements to be installed will be the glazing with artwork into each of the five bays facing La Trobe Street
- Surface works at the station entrance include service installation, bollards and paving
- To facilitate the new access point, the concrete pump on Swanston Street will be removed.

State Library Station

Little La Trobe Street site



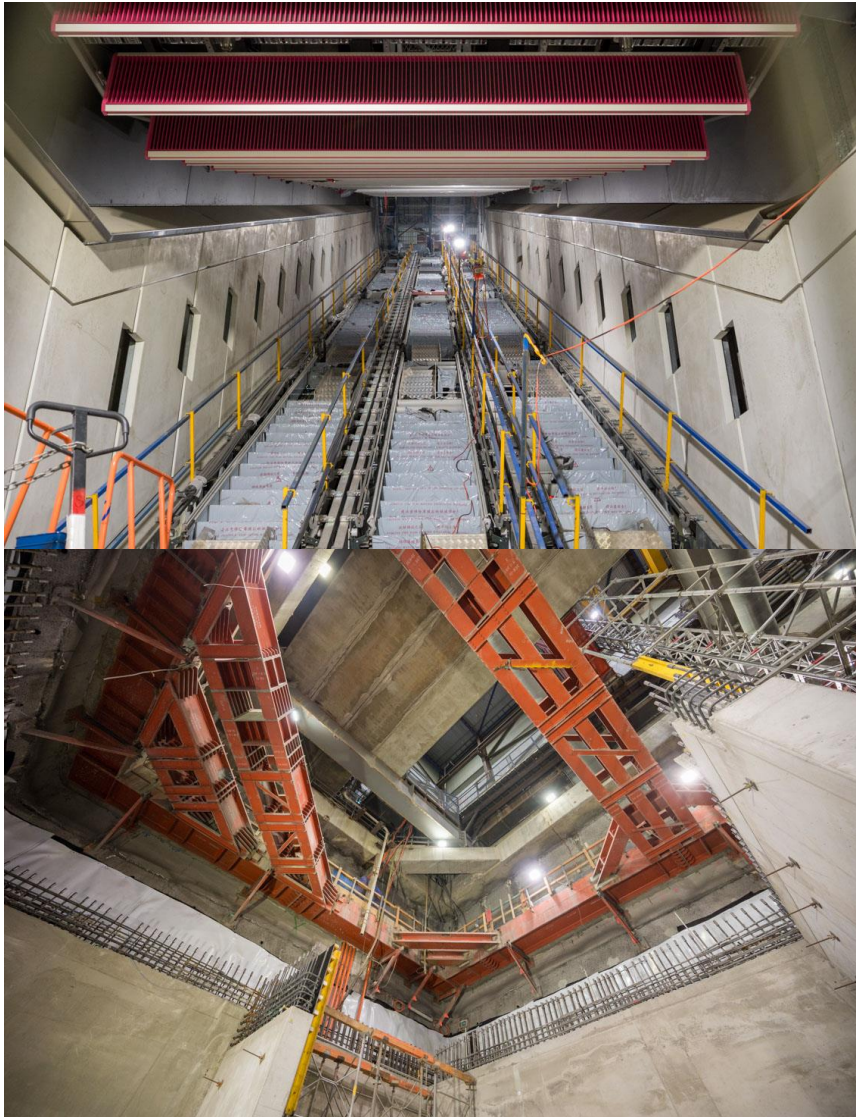
Milestones and lookahead

- The concrete pump on Little La Trobe Street has been removed
- A long-term two-way traffic arrangement at Little La Trobe Street is now in place to facilitate above ground structure works and logistics at the sites
- Fit out of the western structure is continuing
- Steel roof beams are being installed at the eastern structure using a 60t crane within the road closure.



State Library Station

Franklin and A'Beckett Street sites

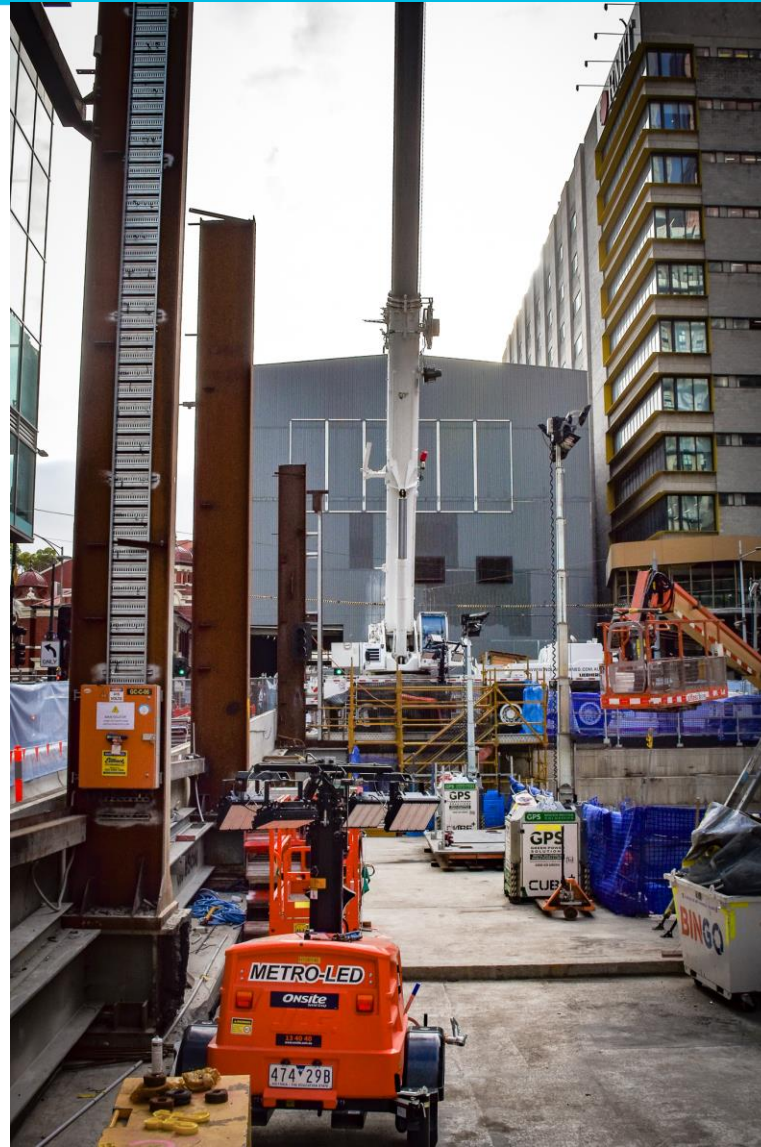


Milestones and lookahead

- All 15 escalators have been installed at Franklin Street East and the cavern. State Library Station will have 27 escalators in total
- A'Beckett Street shaft construction is continuing with steel installation, concrete pours and strut removal.
- Logistics using a crane have been cut off from the cavern, decreasing the number of deliveries to the A'Beckett Street site
- Cavern works are nearing completion.

State Library Station

Public Area works



Milestones and lookahead – Franklin St West

- Demobilisation of the Franklin Street West acoustic shed is complete
- Internal structures and backfilling is continuing at the site
- Capping beam removal works are scheduled to commence in May on the south side of the site
- Capping beam removal and utilities reinstatement works are scheduled to commence in June on the north side of the site.

State Library Station

Public Area works

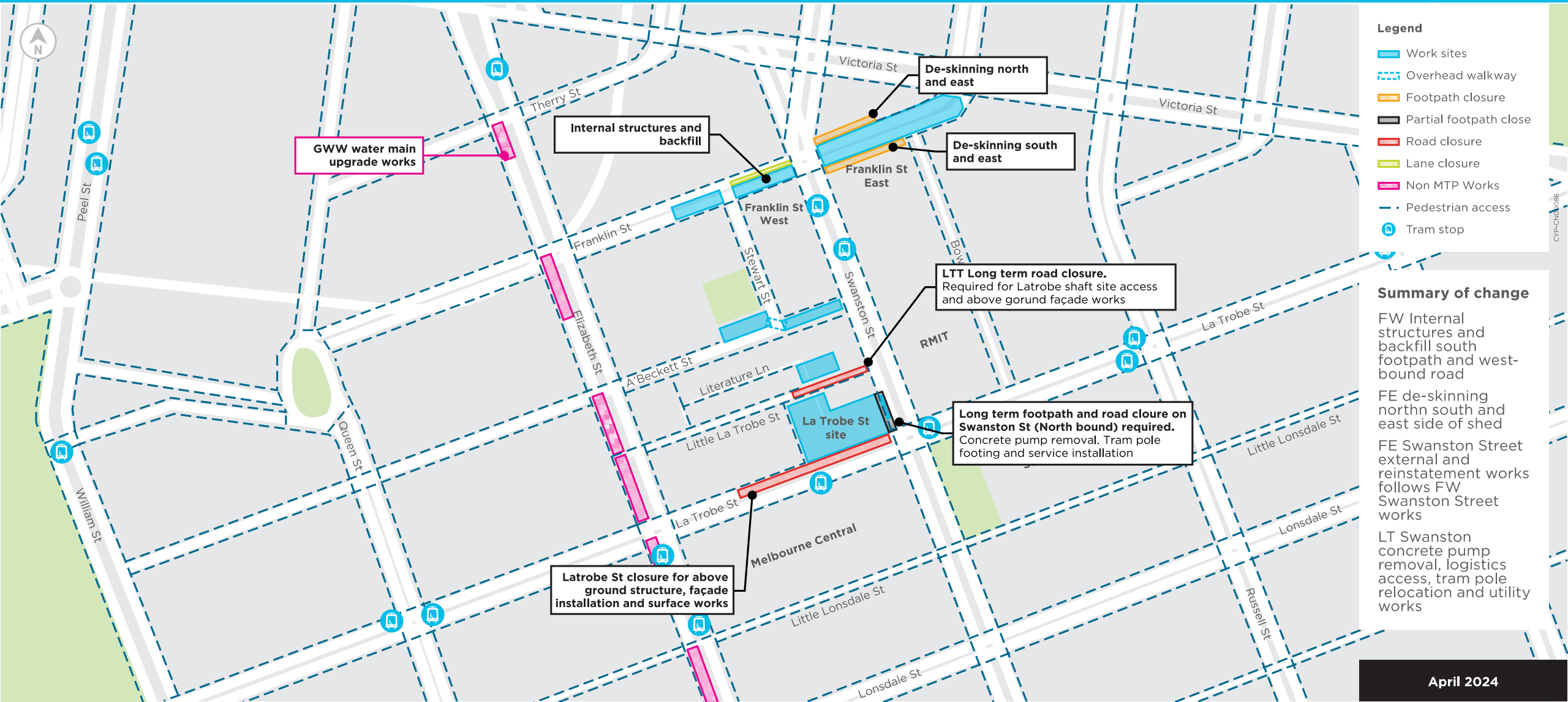


Milestones and lookahead – Franklin Street East

- HV gantry and staff crib sheds at the Franklin Street East site have been removed
- Franklin Street East acoustic shed demobilisation has commenced with de-cladding works. Steel frame removal is scheduled to commence in May
- Footpath closures are now in place to safely facilitate these works with DDA access to Melbourne City Baths maintained via traffic control
- Capping beam removal and utilities reinstatement works are scheduled to commence in June.

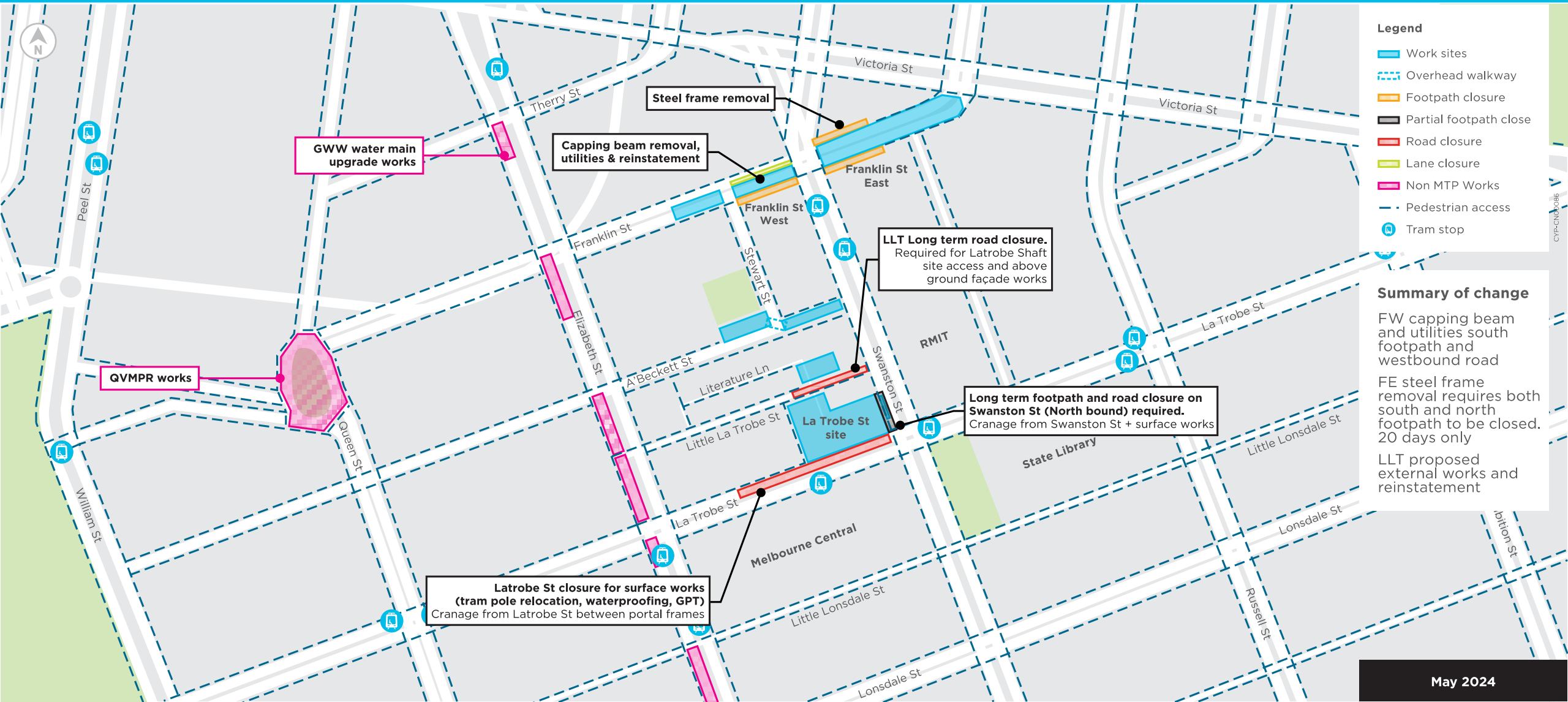
April 2024

Proposed Traffic Changes



May 2024

Proposed Traffic Changes



Legend

- Work sites
- Overhead walkway
- Footpath closure
- Partial footpath close
- Road closure
- Lane closure
- Non MTP Works
- Pedestrian access
- Tram stop

Summary of change

FW capping beam and utilities south footpath and westbound road

FE steel frame removal requires both south and north footpath to be closed. 20 days only

LLT proposed external works and reinstatement



Questions



Town Hall Station Update

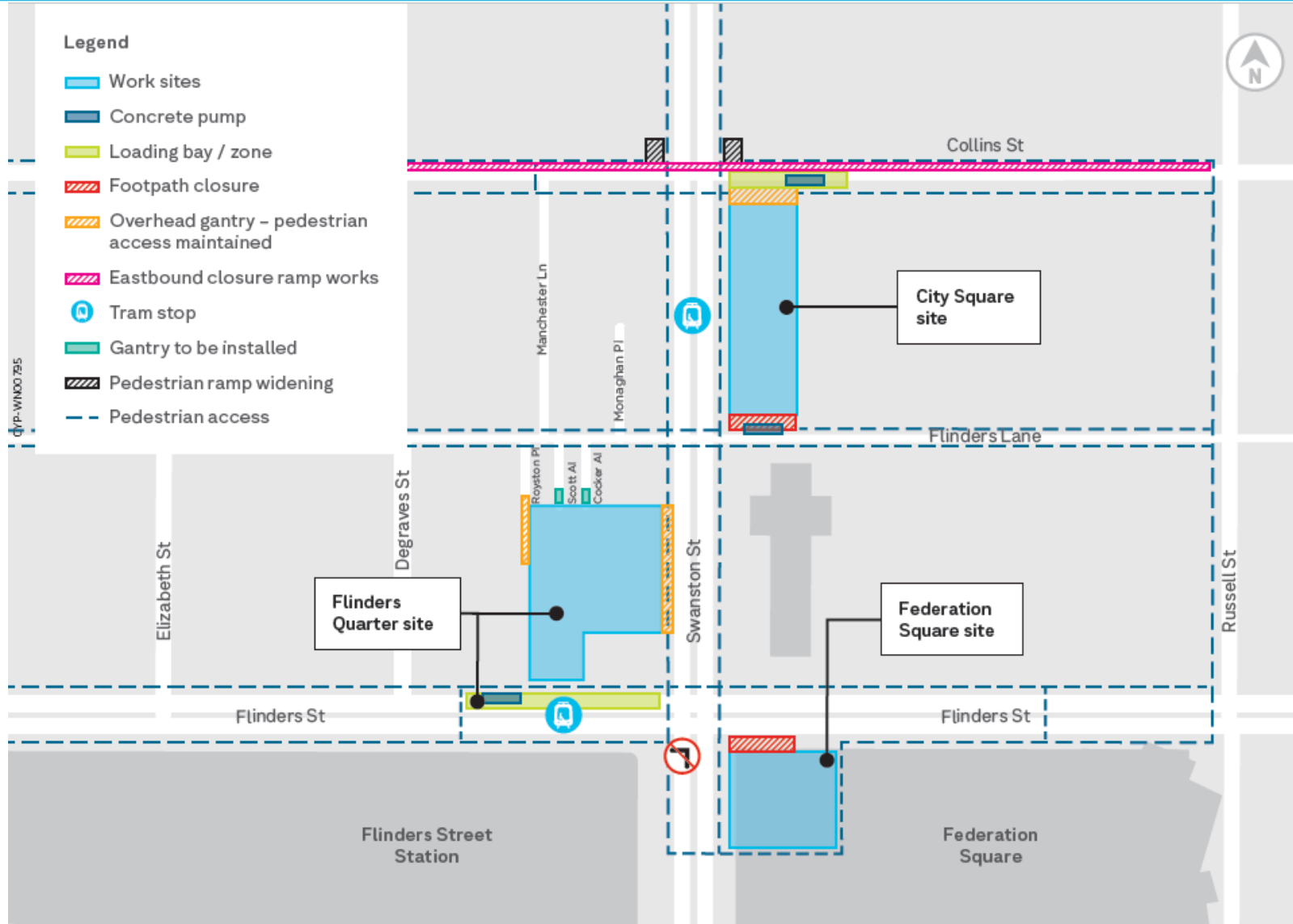
Town Hall Station Work Lookahead



ACTIVITY	APRIL	MAY	JUNE	JULY	AUGUST	SEPT	OCT
City Square station build out							
Demobilisation of City Square tower cranes							
Swanston Street – OSD removal of overhead site sheds and works on Swanston Street at Flinders Quarter site entrance							
Installation of overhead gantries in laneways (Scott and Cocker)							
Flinders Quarter structures works (Shaft A)							
Occupation of Campbell Arcade and the Degraes Subway							
Collins Street works – loading bay, concrete pump and gantry removal							
Flinders Lane – City Square – loading bay removal, civil works including bluestone and landscaping							

Upcoming Works

Collins Street pedestrian ramp widening



Progress Update: Scott Alley/ Cocker Alley/ Manchester Lane and Flinders Lane works completion



Progress: Building up Shaft A

Flinders Quarter



Progress: Shaft A Pile Demolition

Flinders Quarter



Progress: First City Square ground floor slab pour



Questions

Sustainability Update

‘CYP D&C have adopted environmental, social and economic sustainability principles to create infrastructure that connects our communities and delivers a legacy for present and future generations’



Sustainability Deliverables

Objectives, targets and indicators



- On track Contract obligations across 9 RPV Themes
- On track Achieve 5-star Green Star As-Built rating at each station
- On track Achieve project wide 'Leading' IS Rating minimum score of 84

Sustainability in Design

(e.g. State Library Station)



Excellence

- ISC IS Rating of 84
- 5-star Green Star Rating at each station



Climate Resilience

- Concrete specification accounts for changes in rate of carbonation
- Design allows for an increase in rainfall intensity of 18.4%



Water

- 40% reduction in total water use over construction and operation
- 29% replacement of water use with non-potable sources
 - Water Treatment Plant non-potable water reuse during construction
 - 150 kL stormwater tank at station
 - High efficiency water fittings and fixtures provide 27% reduction



Communities

- Provision of secure bike parking spaces
- Temporary creative hoarding to embrace heritage and activate community spaces



Workforce

- 2.5% Aboriginal Employment Target
- At least 1,185,786 hours apprentices, trainees and cadets
- 1.5% Priority Jobseekers



Materials

- 44% reduction in Portland cement
- 95% steel supplied from a Responsible Steel Maker
- 80% permanent steel ACRS certified
- Green Star materials requirements
- 95% permanent timber FSC/ PEFC certified or from reused source



Energy & Carbon

- 30% reduction in greenhouse gas emissions over construction & operation
 - High efficiency LED lighting
 - Variable speed escalators and regenerative braking: modelled 49% energy saving*
- 20% renewable energy use during construction



Supply Chain

- 87.5% local (ANZ) content
- Over \$71 million spent on Social Procurement as at end 2021



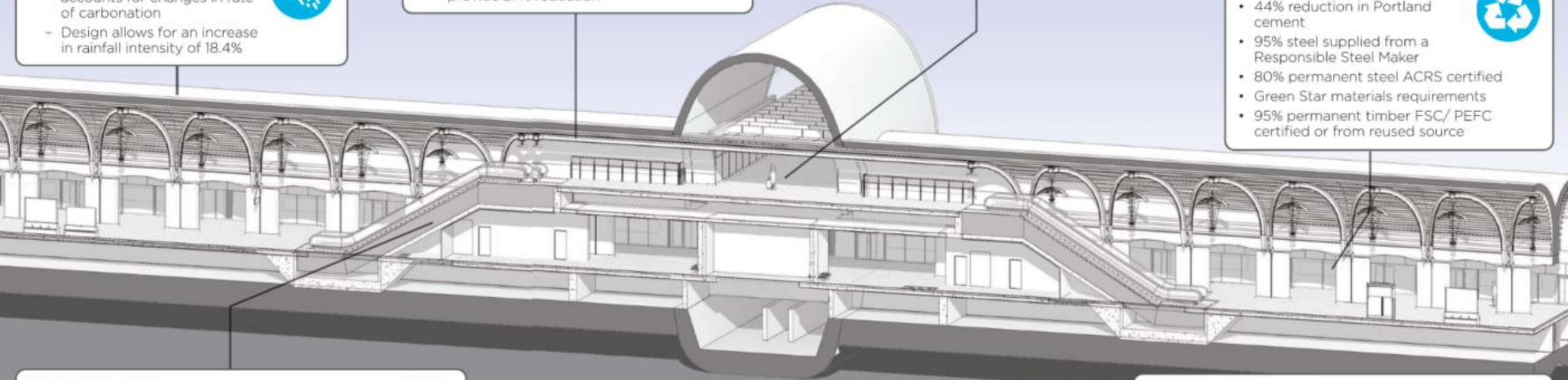
Waste (Construction)

- >60% office waste diversion from landfill
- >90% construction waste diversion from landfill
- 100% non-contaminated spoil reuse



Urban Ecology & Vegetation

- Design incorporates at least one tree plot for every tree removed
- Post-construction net increase in vegetated surfaces
- Water Sensitive Urban Design features include tree pits and passive irrigation



green building council australia



Custom (Melbourne Metro Rail Authority)
2020

Design Review



**– TOWN HALL STATION – CITY SQUARE
CRYPT**

Water

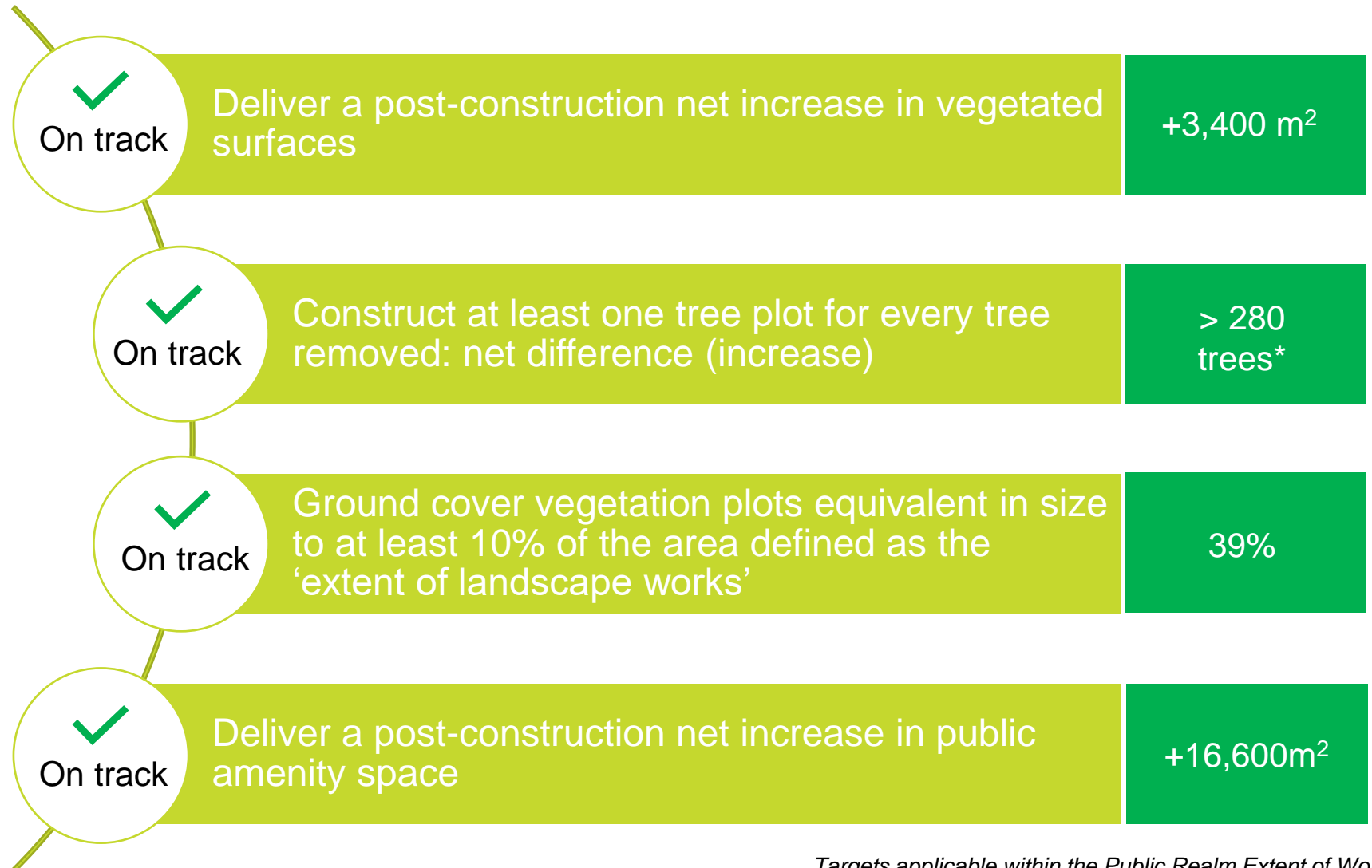
Rainwater and stormwater harvesting



Recycled Water Treatment Plant
installation –
Town Hall Station

Urban Ecology & Vegetation

Objectives, targets and indicators



Materials

Objectives, targets and indicators



✓
On track

44% reduction in concrete Portland cement content project wide.

✓
On track

24% reduction in materials lifecycle impact.

Focus for 2024



Creative Program Update – State Library - Town Hall

Queer PHOTO in the City

Franklin Street frames



Queer PHOTO in the City at Franklin Street Frames. Queer PHOTO is a collaboration between Midsumma and PHOTO 2024 Festival

Questions