

Construction update



Town Hall Station

September 2024

Construction of the Metro Tunnel Project's Town Hall Station has entered a new phase, including works on station entrances, fit-out of the underground station and reinstatement of community space.

The Metro Tunnel opens in 2025 and will create a new end-to-end rail line from Sunbury in the west to Cranbourne/Pakenham in the south-east, with bigger and more modern trains, and five new stations.

Works snapshot: September

In August, crews progressed with construction of above ground structures at City Square, removed project hoarding on six of the Flinders Street Station platforms and progressed with surface and reinstatement works around the Flinders Quarter site, on Swanston and Flinders streets.

Construction works within the Town Hall Station precinct during September 2024 include:

- Station entrance construction and underground build-out works at the City Square, Flinders Quarter and Federation Square sites
- Ongoing construction of above ground structures work at City Square

- Campbell Arcade restoration works including fit-out of the underground passenger connection to Flinders Street Station
- Installation of an underground stormwater treatment and reuse system (known as a Gross Pollutant Trap) on Swanston Street
- Paver rectification works on the Flinders Street footpath
- Train testing through the tunnel.

Further information on these works can be found overleaf or at metrotunnel.vic.gov.au



Sign up for updates
Subscribe for email and SMS updates
at metrotunnel.vic.gov.au/subscribe

Construction partner:



Cross
Yarra
Partnership



When are we working?



Normal construction hours

7am to 6pm, Monday to Friday
7am to 1pm, Saturdays



Out of hours

Some works are required to take place out of normal construction hours



24 hours

24 hour works are sometimes required during peak construction activities

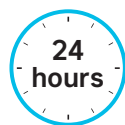


Cladding taking place in City Square's crypt

Upcoming works in your area

City Square site

**24-hours, Monday to Friday
7am to 2pm, Saturdays (as required)**



When Town Hall Station opens, the City Square station entrance will lead into an expansive underground passenger foyer, with lifts and escalators transporting passengers down to the customer and ticketing area, towards the train platforms.

Above ground, City Square will be reinstated as a public gathering space, fully landscaped for the whole community to enjoy.

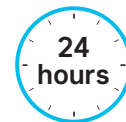
Works occurring this month include:

- Construction of the passenger concourse structure which involves the use of the tower cranes, concrete pumps, and other tools and equipment to undertake in situ and precast concrete placement, internal finishes and mechanical plant installs
- Construction of two above ground station service structures, which will be built with both precast and in situ concrete elements. These structures will be located north-east and south-west of City Square, housing lift bays and tunnel exhaust shafts
- Piling works will also be completed throughout September on the north elevation of the site. These works will generate periods of medium to high – levels of noise
- Installation of infrastructure to support mechanical, electrical and plumbing services
- Concrete trucks will access the loading bays on Collins Street and Flinders Lane. Concrete pours involve regular deliveries, the use of concrete trucks, concrete pumps and concrete finishing equipment
- Ventilation equipment operation will be required during all works below ground, and site lighting will be required for evening and overnight works

- There will be regular truck movements to deliver and remove equipment and construction materials via the Collins Street and Flinders Lane loading bays
- These works are expected to generate low to medium levels of noise.

Flinders Quarter site

**24-hours, Monday to Friday
7am to 12am, Saturdays and Sundays
(as required)**



When Town Hall Station opens, the station entrance building located on Swanston and Flinders streets will lead into an expansive underground passenger foyer, with lifts and escalators transporting passengers down to the customer and ticketing area, towards the train platforms.

Works occurring this month include:

- Construction of the passenger concourse which involves the use of the tower crane, mobile surface cranes, concrete pumps, and other tools and equipment to undertake steel fixing, formwork installation and concrete pours including hydro scabbling
- Installation of infrastructure to support mechanical, electrical and plumbing services
- Concrete pours involve regular deliveries via the loading zone on Flinders Street, and the use of concrete trucks, concrete pumps and concrete finishing equipment
- Major concrete pours can take between 10-20 hours with all concrete pumps in use to achieve the volume of concrete required. Concrete pours must be continuous to ensure structural integrity and therefore may continue outside of normal construction hours

- Ventilation equipment operation will be required during all works below ground, and site lighting will be required for evening and overnight works
- There will be regular truck movements to deliver and remove equipment and construction materials via the Flinders Street loading zone
- Due to road permit requirements, large plant will occasionally be delivered and demobilised from the site outside of standard construction hours
- Works are continuing on the above ground structures within the site which will provide exhaust and ventilation functions to the station below. They are being constructed using a lifting/climbing form method, which involves a hydraulic system that raises or 'lifts' once the core inside has been poured. These works include steel fixing and concrete pours and will take place until midnight, seven days a week.

Flinders Street Station

7am to 6pm, Monday to Friday
7am to 1pm, Saturdays



- With construction of the six passenger lifts complete, the blue hoarding surrounding the lifts was removed in August to allow additional space on the platforms
- Works to restore Campbell Arcade and construct the future underground pedestrian connection between Town Hall Station and Flinders Street Station, known as the 'Flinders Link', are ongoing
- Works will take place to re-install heritage signage above the staircase entry points to Campbell Arcade. These works will require some short-term narrowing of the Flinders Street northern footpath overnight while the signage is re-installed.
- These works will generate some intermittent medium-level noise
- Separate notification has been provided to stakeholders regarding these works.

Swanston Street footpath closure

Until late September 2024



- Works continue within the Swanston Street western footpath closure, outside the front of the Flinders Quarter site, until late September
- These works include installation of a stormwater treatment and reuse system (known as a Gross Pollutant Trap), station entrance landscaping works, footpath reinstatement, and installation of a pedestrian protection gantry
- These works are continuing 24-hours and will generate intermittent periods of noise and vibration
- Access to businesses and buildings is being maintained at all times.

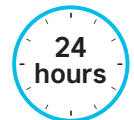
Flinders Street paving rectification works



Early September to mid-October 2024

- In August, the Flinders Street temporary pedestrian crossing between Woolworths and Flinders Street Station was removed in preparation for surface works to commence in the area
- From early September, paving rectification works will commence between 8pm and 6am on the northern Flinders Street footpath
- The northern Flinders Street footpath will be closed in stages, between 8pm and 6am, during these works
- These works will be staged to minimise impacts and the footpath will reopen between 6am and 8pm
- Once complete, paving rectification works will commence on the southern Flinders Street footpath, adjacent to Flinders Street Station
- There will be staged footpath closures associated with these works
- Access to local businesses, buildings and Flinders Street Station will be maintained during these works
- These works are expected to generate medium levels of noise, with intermittent periods of high-level noise associated with paver removal
- Traffic control will be in place to manage changes in access during these works.

Federation Square site



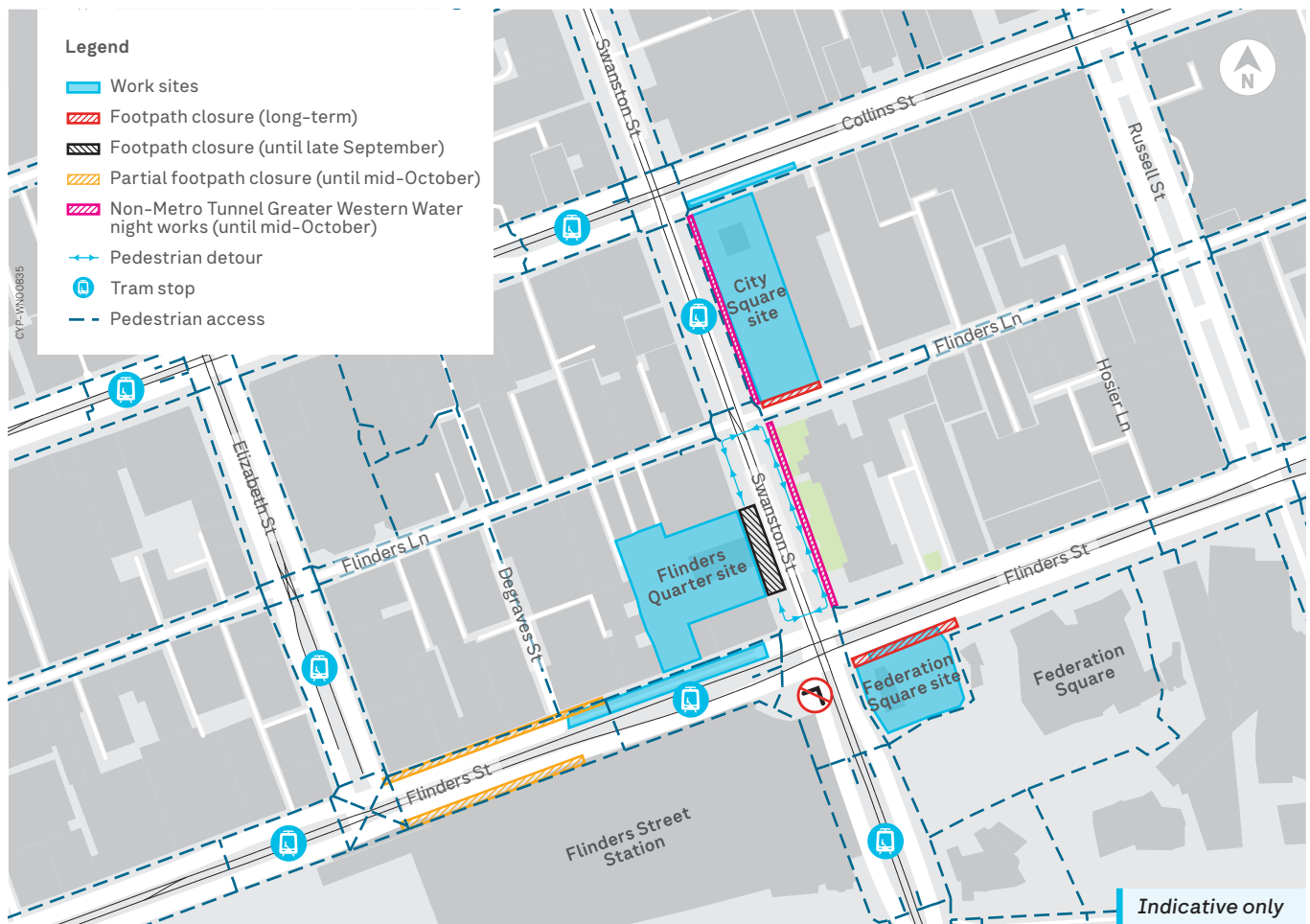
24-hours, Monday to Sunday

Federation Square will be an entrance point to Town Hall Station, providing passengers with new access to this vibrant public space and the nearby arts and sporting precincts.

Works occurring this month include:

- Construction and fit-out of the station passenger areas and operational rooms, including installation of waterproofing materials, steel, and concrete
- There will be regular truck movements to deliver and remove equipment and construction materials
- Works to excavate the escalator shaft at Federation Square are ongoing until late September
- This work is taking place within the acoustic shed, however, some excavation works include the use of an excavator with a hammer attachment which is expected to generate some periods of high-level noise
- As part of this work, an extraction fan is operating so that the team can work safely to excavate underground. The fan will generate some periods of medium-level noise and vibration.

Works area map



Greater Western Water works on Swanston Street

Greater Western Water works are underway to renew the water main in Swanston Street, between Collins and Flinders streets, as it is reaching the end of its operational life.

Works are from 8pm to 6am, Sunday night to Friday morning, until mid-October. There will be a partial footpath closure on the eastern footpath of Swanston Street (between Collins Street and Flinders Street). Traffic controllers will help vehicles, pedestrians and cyclists move safely through the area.

These works should not impact water or sewer services. Greater Western Water will be in direct contact with customers if a need to impact water supply arises.

For more information, visit yoursay.gww.com.au or contact Greater Western Water on 13 44 99.

Business support

While the new Town Hall Station will be a significant boost for the local area, construction activities can impact local businesses. In response to this, our Business Support Team assists businesses through the disruption and any permanent changes that will take place.

Please see the promotion in this notification for **Young & Jacksons** located at **1 Swanston Street, Melbourne**. We look forward to promoting more local businesses as the project progresses.

Second Metro Tunnel station completed

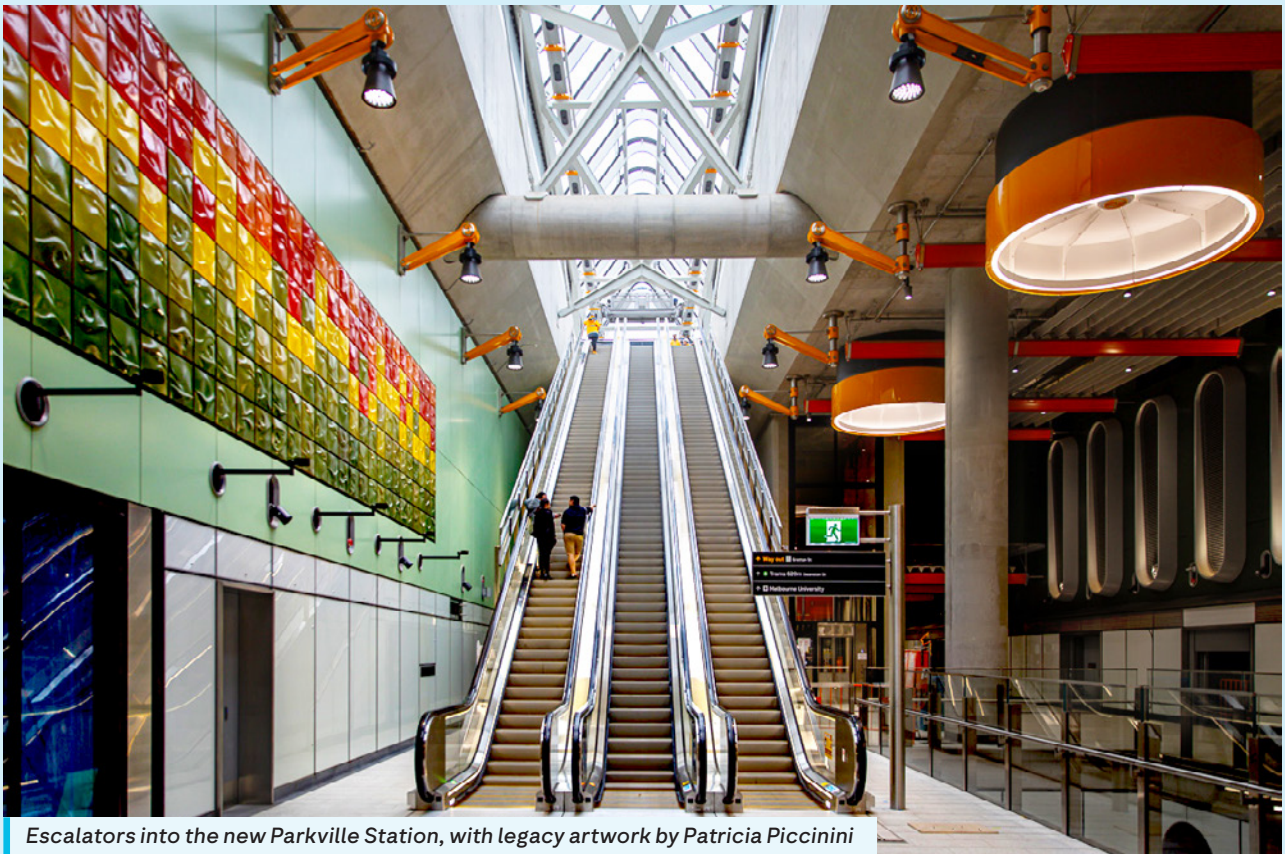
We recently completed major construction on Parkville Station – the second of five new stations to be finished as part of the **Metro Tunnel**.

Parkville Station will transform the way thousands of medical staff, patients, families, students, teachers and researchers travel to this busy precinct every day, with station entrances directly outside the Royal Melbourne Hospital, Peter MacCallum Cancer Centre and The University of Melbourne.

It also has a 44m-long pedestrian underpass beneath Royal Parade to make crossing the road easier and safer, and a new level-access tram stop on Royal Parade will allow people to switch between trams and trains when the Metro Tunnel opens in 2025.

One of Parkville's key local thoroughfares, Grattan Street, has now fully reopened for the first time since 2018, making it easier for motorists, cyclists, pedestrians and bus passengers to visit the area.

To see photos of the completed Parkville Station, visit [metrotunnel.vic.gov.au](https://www.metrotunnel.vic.gov.au)



Escalators into the new Parkville Station, with legacy artwork by Patricia Piccinini

Find out more

[metrotunnel.vic.gov.au](https://www.metrotunnel.vic.gov.au)

1800 105 105 (call anytime)



For languages other than English
please call (03) 9209 0147



Please contact us if you would like this information in an accessible format. If you need assistance due to a hearing or speech impairment, visit [relayservice.gov.au](https://www.relayservice.gov.au)



The
YOUNG & JACKSON



THIS SEPTEMBER...

PARMAGEDDON

a month long celebration of
'The Parma',
starting Dad's Day 2024

Pig & Pickel. Aussie. Mexican. Bangers & Mash
4 x Half Parma + chips \$50
4 x Full Parma + chips \$100

OPEN EVERYDAY 10AM - 12AM

☎ 03 9650 3884
YOUNGANDJACKSONS.COM.AU

1 SWANSTON ST,
MELBOURNE VIC 3000