



# State Library Station and Town Hall Station Community Reference Group

Monday 11 November 2024

Presentation by Cross Yarra Partnership (CYP)



# Agenda

Monday 11 November 2024



| Item | Topic  | Presenter    |
|------|--|--------------|
| 1    | Welcome and introductions                        | Chris Lovell |
| 2    | Minutes and actions                              | Chris Lovell |
| 3    | Project wide update                              | CYP          |
| 4    | State Library Station update                     | CYP          |
| 5    | Update on City Square design                     | CYP          |
| 6    | Town Hall Station update                         | CYP          |
| 7    | Creative program update                          | CYP          |
| 8    | General feedback and items for future discussion | All          |
| 9    | Meeting close                                    | Chris Lovell |



# Welcome and introductions

*Presenter: Chris Lovell*

# Minutes and actions

lest we forget



# Project wide update

# Project-wide update



*November project update*



# State Library Station update

*Presenter: Danielle Smits*





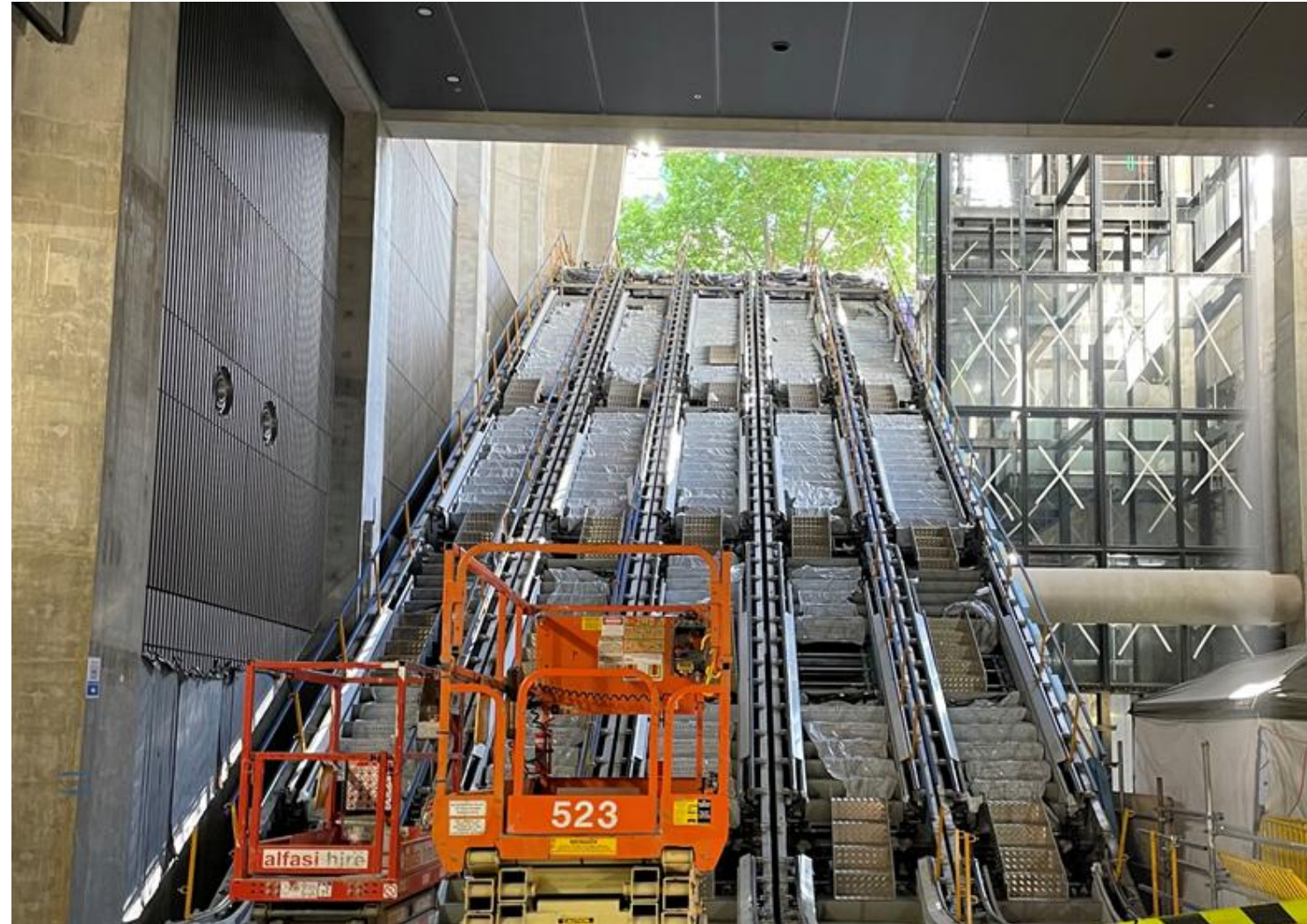


# State Library Station

La Trobe Street site



- Fit-out and mechanical, electrical and plumbing works are continuing underground
- Fit-out and testing of the Melbourne Central escalators is ongoing
- Louvres are going in the west building and glazing is continuing in the east building
- Utilities (water, drainage, electricity and comms) installation is ongoing within the lane closure at La Trobe Street
- The existing La Trobe Street eastbound lane closure will remain in place until March 2025 to complete critical construction activities.



# State Library Station

La Trobe Street site



- A long-term pedestrian diversion on the western side of Swanston Street is in place to construct the station foyer and to carry out surface works outside of the station entrance
- Surface works at the station entrance including service installation, bollards and paving are ongoing.











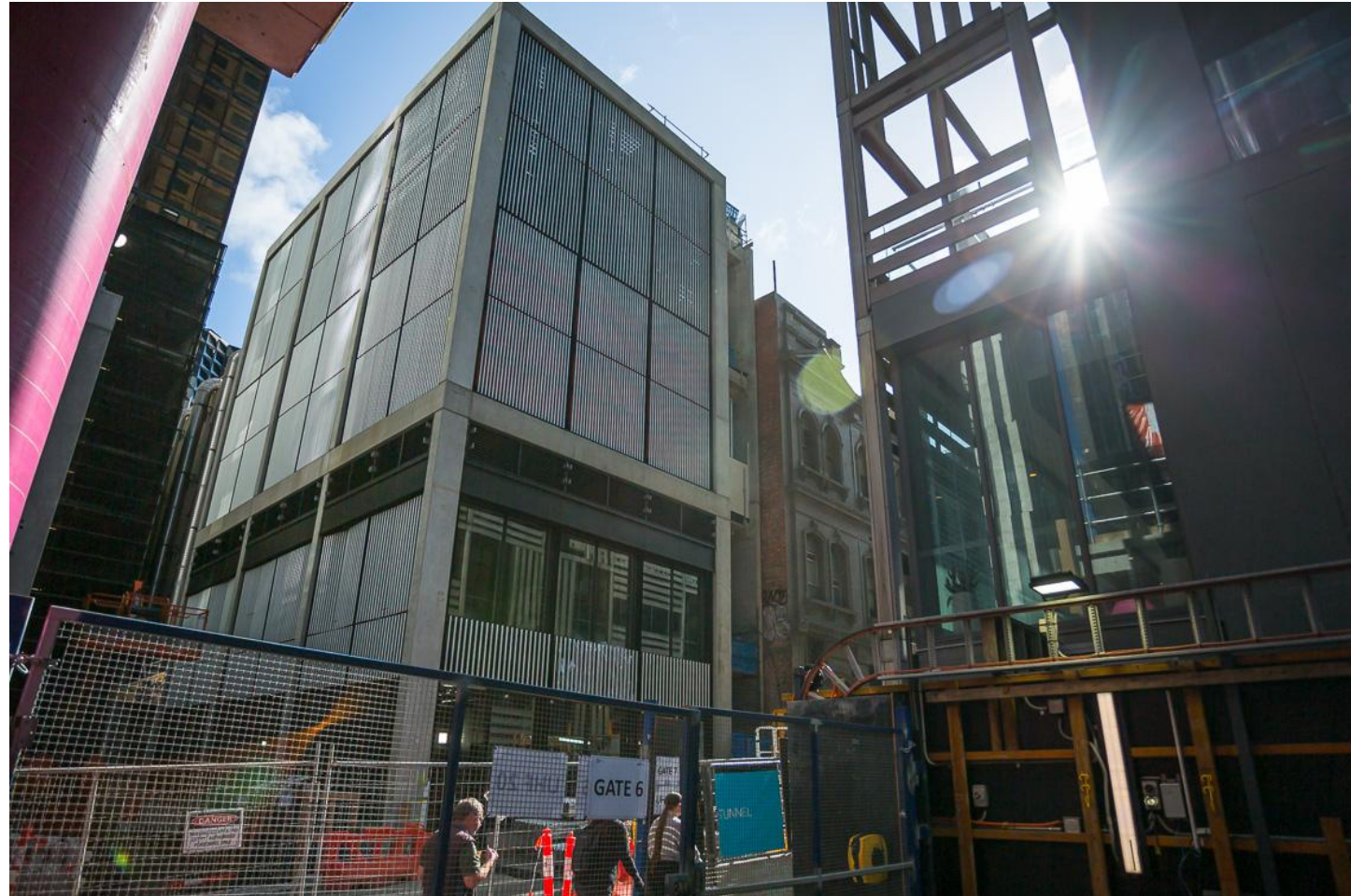


# State Library Station

Little La Trobe Street site



- Façade works and steel roof beams at the Little La Trobe Street site are continuing within the road closure at Little La Trobe Street
- The east building is now clad with aluminum panels, louvers, and clear and opaque glass on the ground floor bays
- The west building has also had its ground floor glazing and louvers installed. The fitout of mechanical, electrical, and plant installations, including chiller units, is ongoing
- Works to extend the site footprint and to provide better access into the La Trobe Street site are required during overnight closures of the Little La Trobe Street southern footpath
- To facilitate ongoing works in this location, the Little La Trobe Street road closure will remain in place until March 2025.

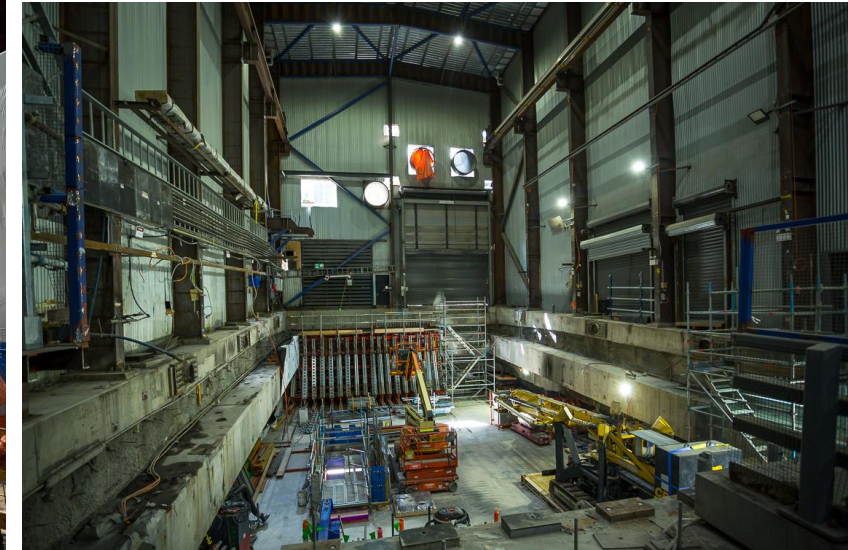
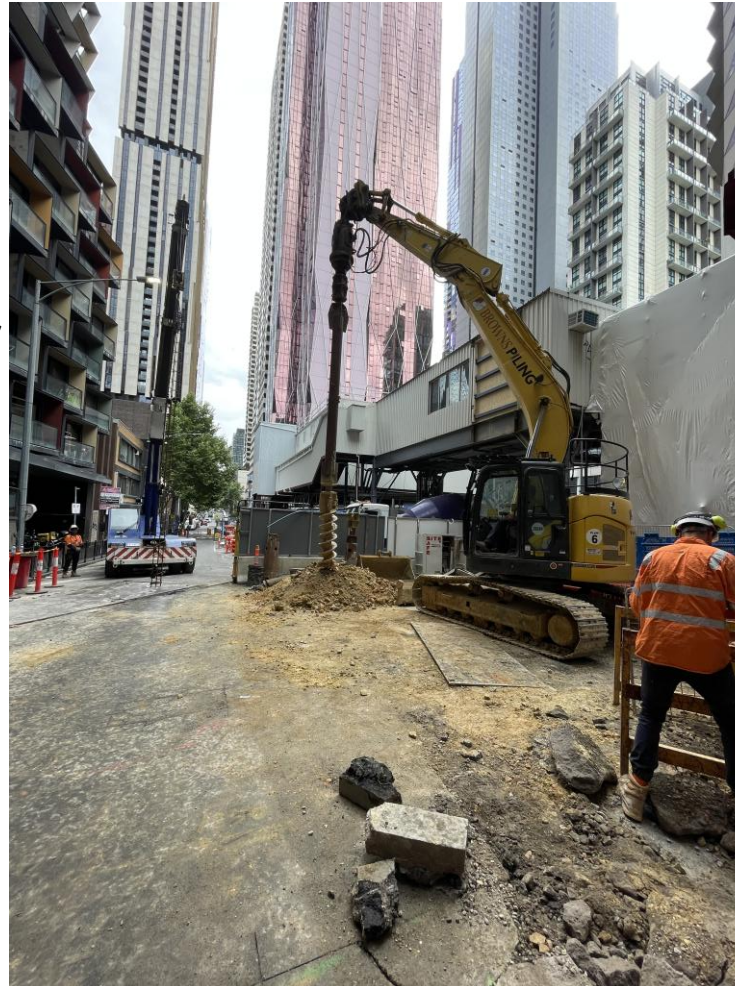


# State Library Station

A'Beckett Street site



- Primary structure works on B2 are continuing at the A'Beckett shaft
- Gantry removal on Swanston Street is complete
- Removal of the metro deck is complete, leaving behind a small, modified deck for trucks to access for deliveries
- Works on the above ground buildings have commenced with formwork and reinforcement going up for the walls
- New site access has been established along the northern footpath adjacent to the shed which will allow for cladding removal and excavation to complete the below ground structure
- Lower levels are ongoing with blockwork, painting, insulation, electrical and mechanical fit out.



# State Library Station

Franklin Street East site



- Canopy installation and fitout of the Franklin Street entrance is continuing
- Escalators have been installed
- Continuing with capping beam removal and backfill
- Waterproofing works are ongoing.



# State Library Station

Franklin Street West site

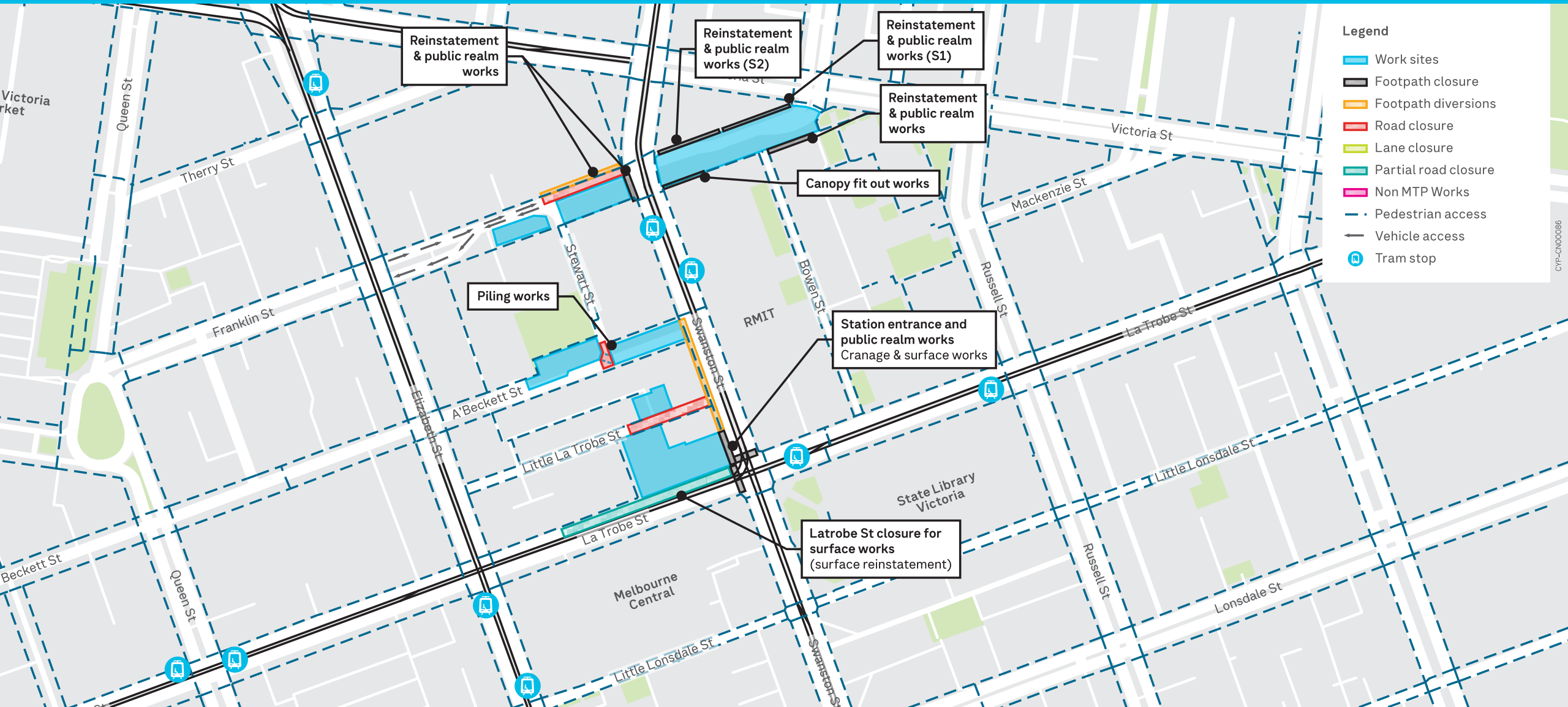


- All precast for the three ancillary buildings have been installed. Architectural cladding and roofing is continuing
- Capping beam removal around the site is ongoing



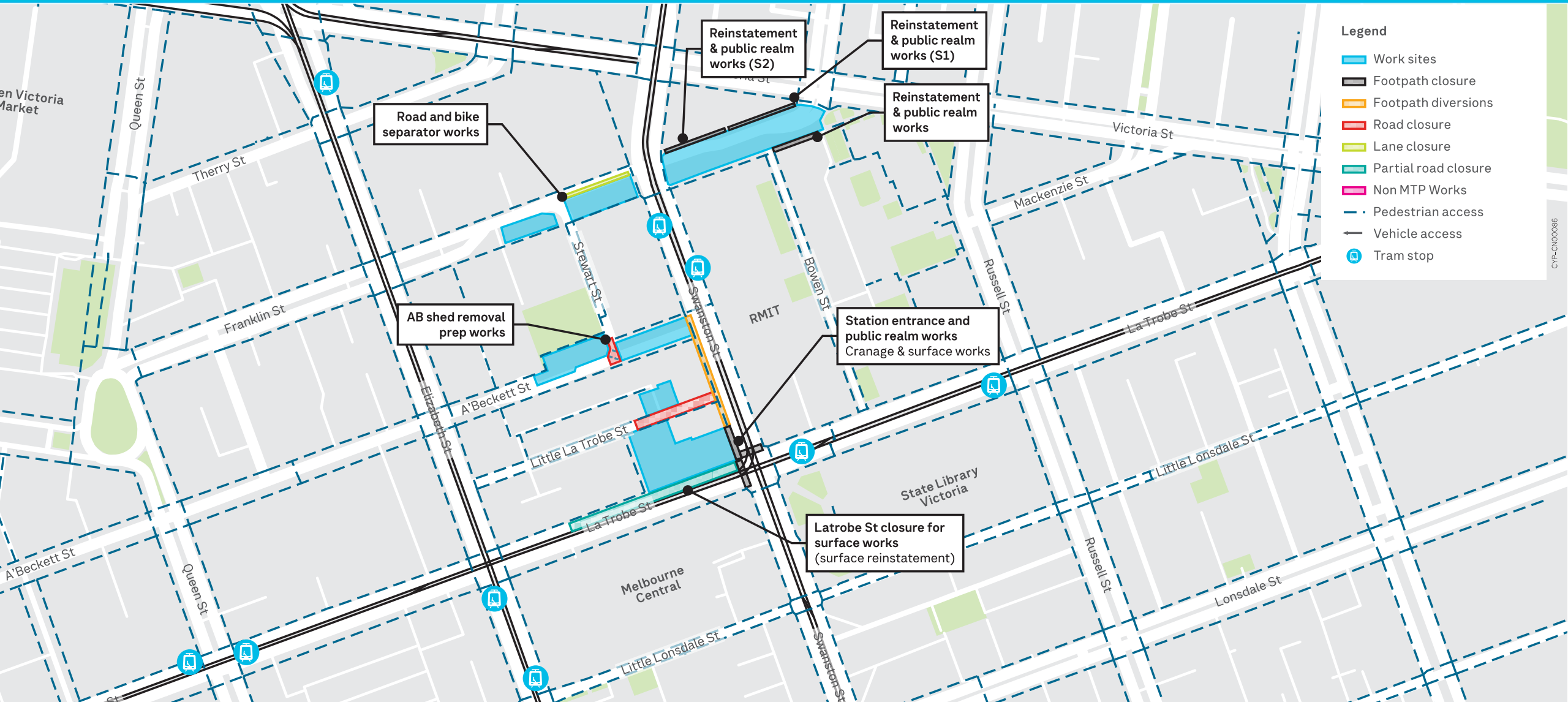
# November 2024

## Summary of traffic changes



# December 2024

## Summary of traffic changes





# Questions



# City Square Design Update



# City Square Design Update

## Agenda



### City Square Overview

- Station entry & Canopy
- Mockridge Fountain Reimagined
- Connection 2 Country.

### Fed Square Canopy

### North-East Pod

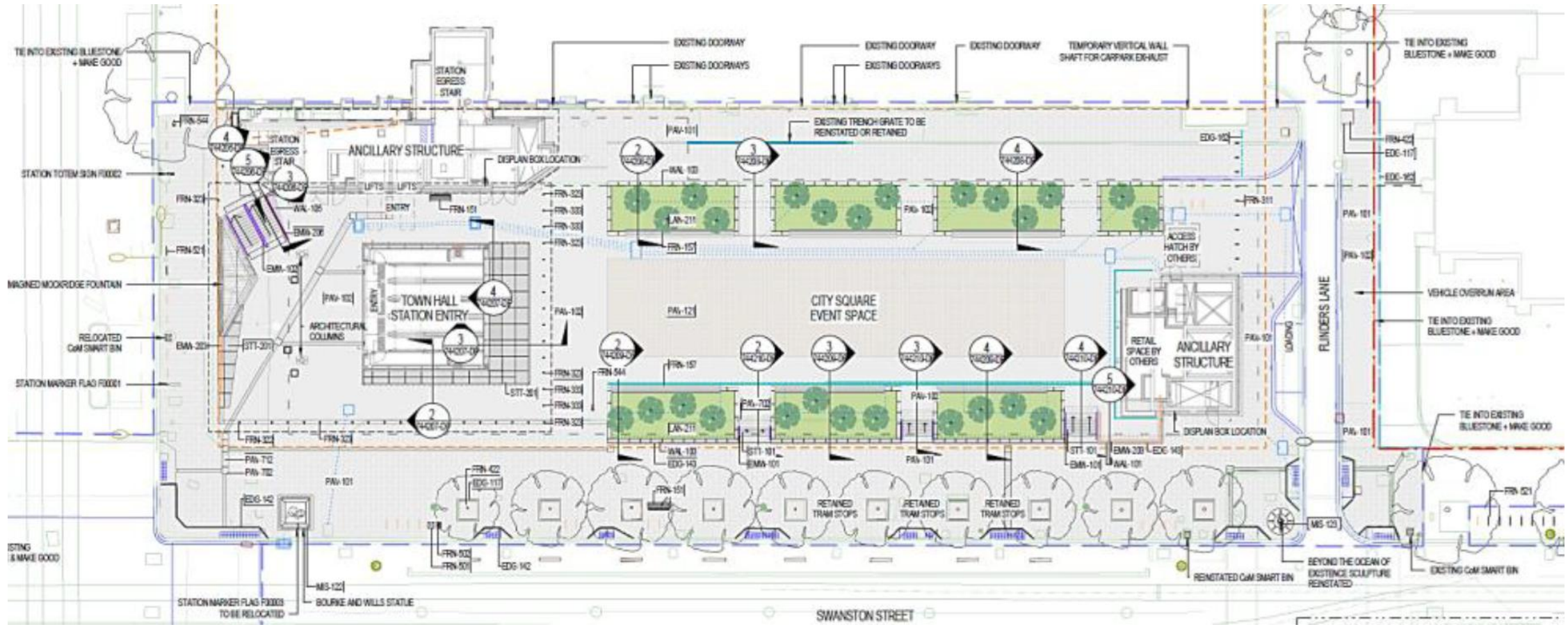
- New Balustrade
- Finishes
- Lighting
- South Elevation
- Security & Ventilation



# City Square Overview

# City Square Design Update

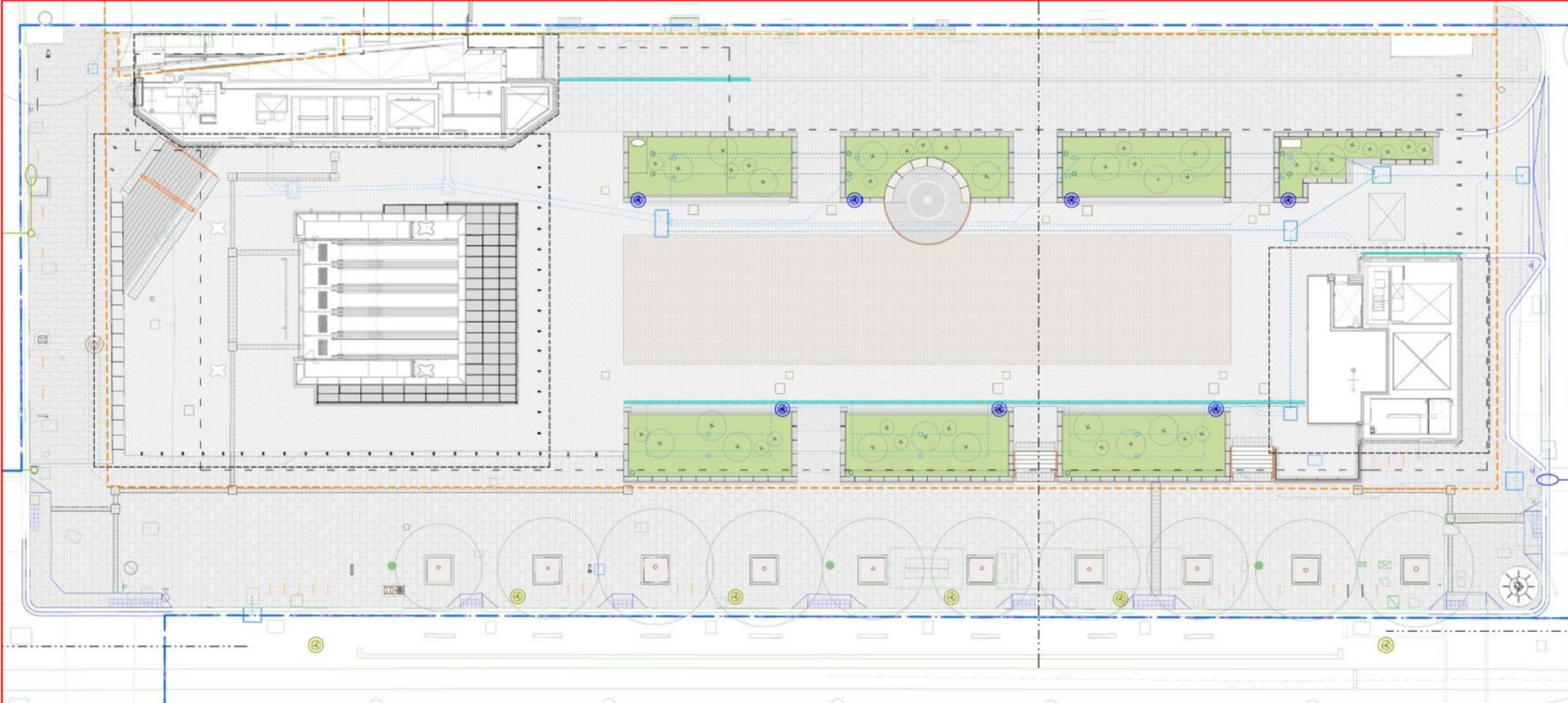
City Square Design in 2022



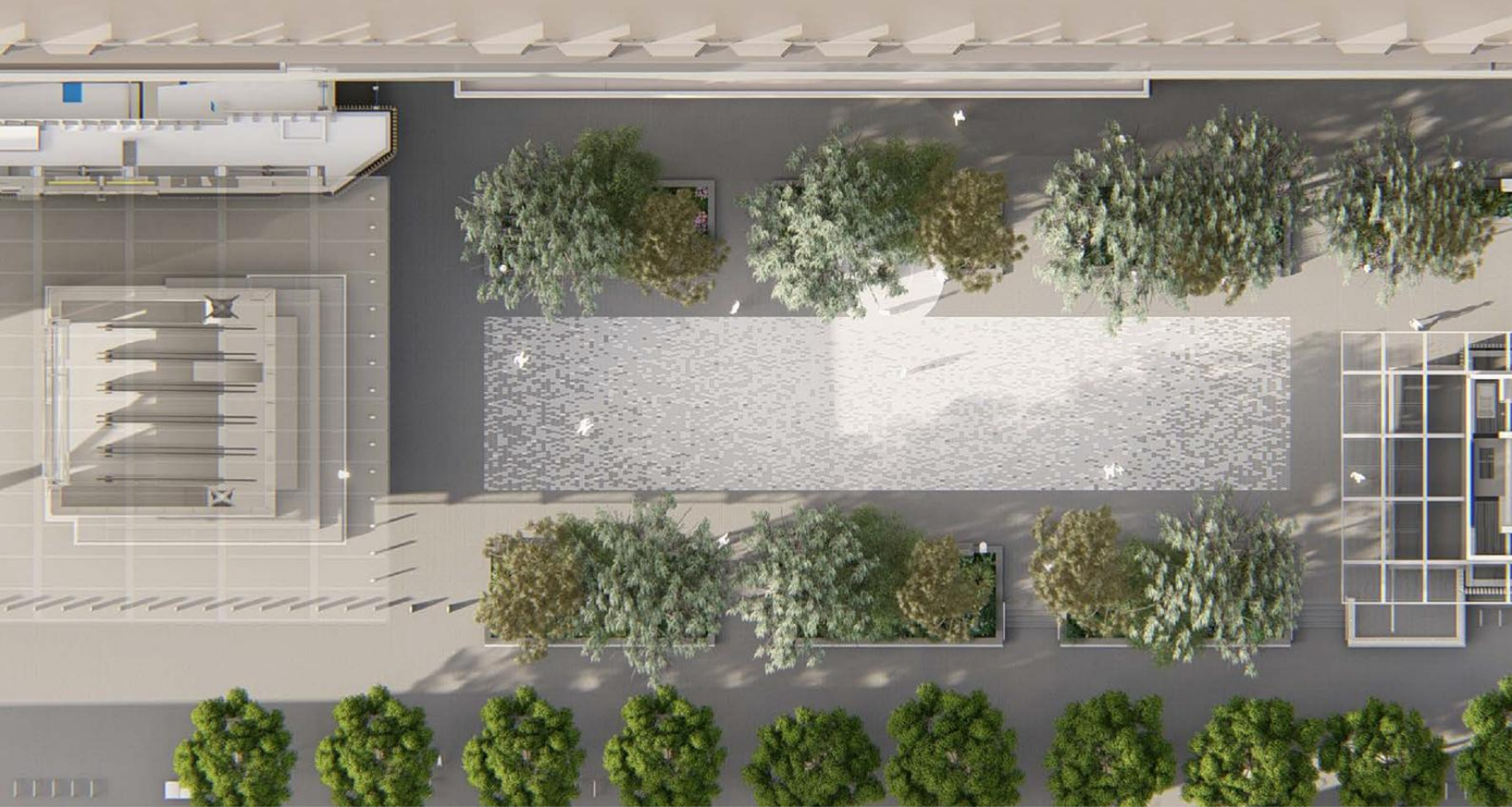
# City Square Design Update



City Square Design today



# City Square Design Update



# City Square Design Update













# Connection to Country

### CONSULTATION CONTEXT

Greenshoot Consulting has been engaged by CYP to support Traditional Owner engagement and design outcomes for the new stations.

Greenshoot Consulting has been consulting with Wurundjeri Elders since early 2019.

Early conversations with Traditional Owner groups led to the following design imperatives being identified to inform the public realm design across all precincts.



#### MAKING LANGUAGE AND CULTURE VISIBLE

Increasing the visibility of language and culture within the built environment is critical to creating culturally safe cities



#### ACKNOWLEDGING THE CONTINUUM OF ABORIGINAL LEADERSHIP

Recognising and educating the general public about the long history of significant Aboriginal leaders and their stories



#### ACKNOWLEDGING THE IMPORTANT ROLE OF WOMEN IN THE KULIN NATION

Telling the stories of significant women and the role women play in Kulin Nation society



#### WATER AND THE HISTORICAL WETLANDS NATURE OF THE ENTIRE PRECINCT AREA

The precincts should feature water-related design elements and plantings to reference the historical wetlands nature of the area



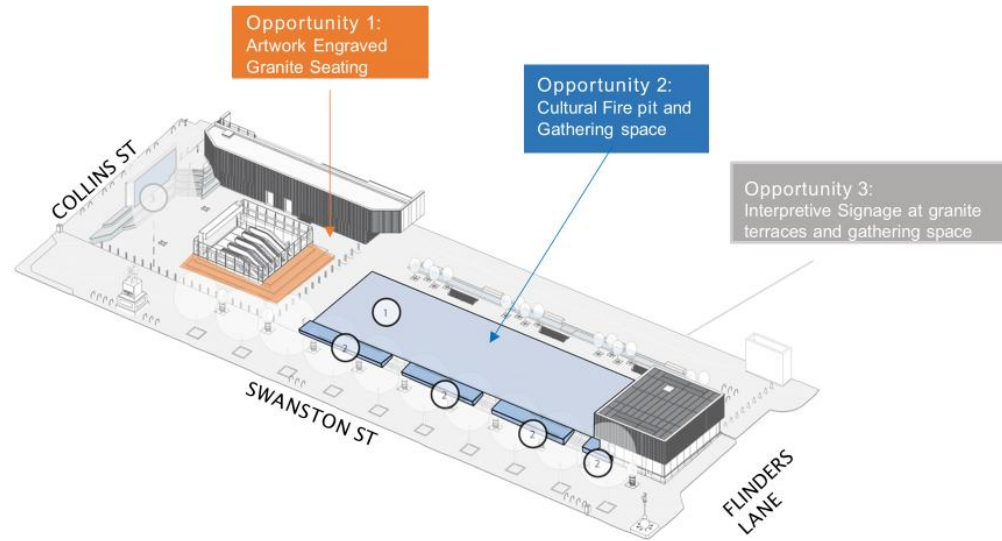
#### 'CARING FOR COUNTRY' AND THE CUSTODIANSHIP OF THE KULIN NATION

Acknowledging the first custodians of the land and the sophistication of Aboriginal land management techniques





# TOWN HALL PRECINCT (CBD SOUTH)



# TERRACE ARTWORK

Engraved Granite Seating

An Expression of Interest was distributed to emerging Wurundjeri artists and the following work was selected by the client.

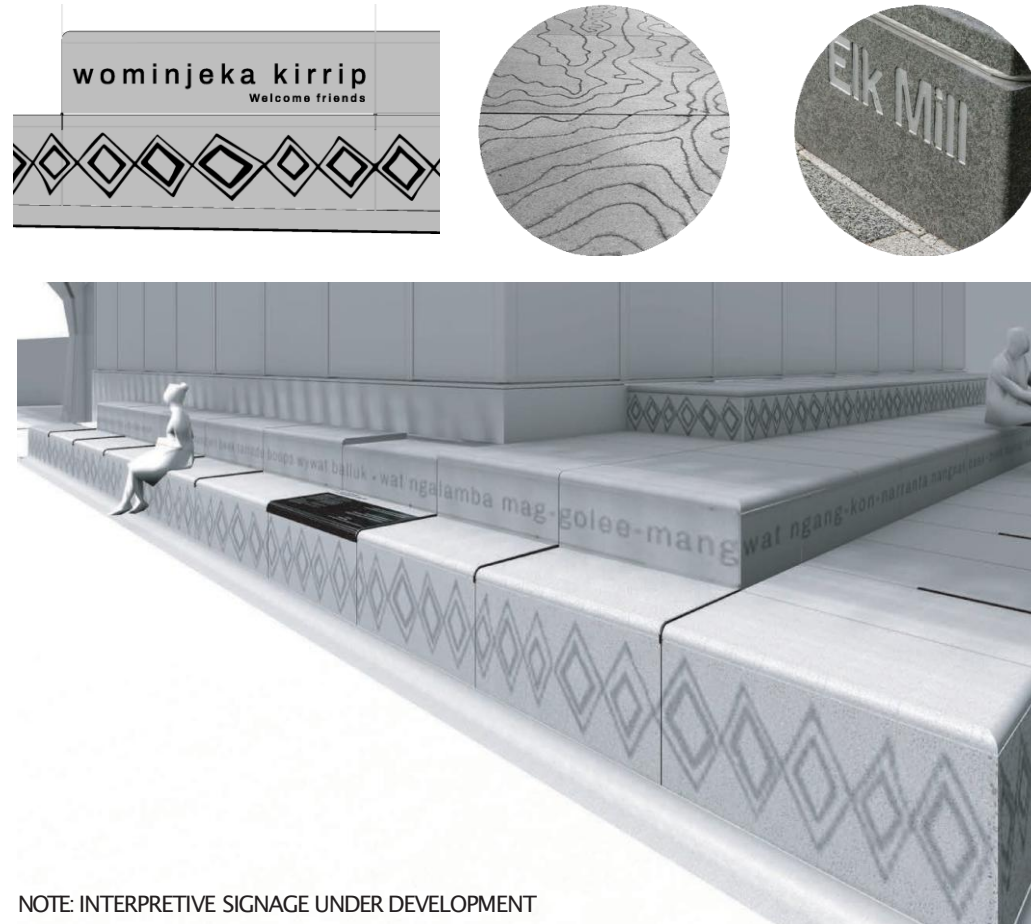
Artwork by Lewis Wandin-Bursill, with Murrup Biik Public Art (Aunty Kim Wandin) and Hearth Galleries (Christine Joy Curation & Exhibitions) referencing William Barak's diamond designs to be engraved into terraces, accompanied by text in Woi-wurrung language.

EXCEPT FROM INTERPRETIVE SIGNAGE COPY:

*"My inspiration comes from William Barak. I want people to see the work and recognise Wurundjeri. It is representative of who we are and where we come from. My designs tell of Country, people and place. They speak of custodianship".*

- Lewis Wandin-Bursil, artist

*The artwork etched into the terraces at Town Hall Station tells the story of Wurundjeri Woi-wurrung custodianship of Country into time immemorial. Caring for Country is ancestral knowledge passed on through generations. It is a way of knowing, being and doing."*



NOTE: INTERPRETIVE SIGNAGE UNDER DEVELOPMENT

# TERRACE ARTWORK

Terrace text provided by artists  
Woi-wurrung language provided  
through WWCHAC

Engraved Granite Seating - Artwork and Language

SWANSTON ST (west facing) TERRACE:



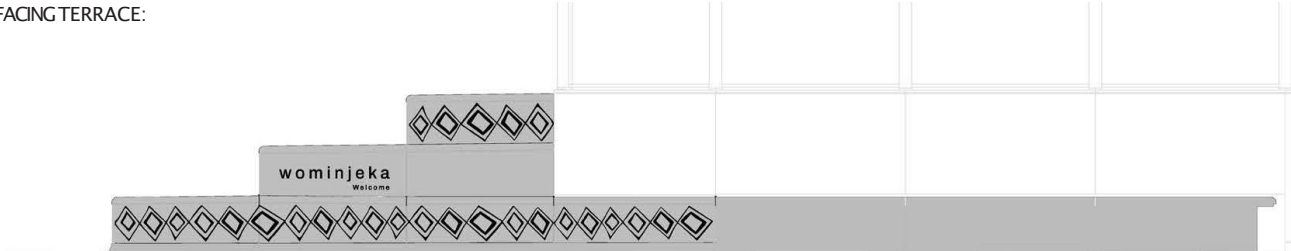
wominjeka kirrip. do-dae-wrung wat nangnak Wurundjeri beek, liwik wywat balluk. wywat ngalamba mag-golee-mang.  
*Welcome friends. Together we honour Wurundjeri Country, people, and our ancestors. We are still here.*

CITY SQUARE (south facing) TERRACE:



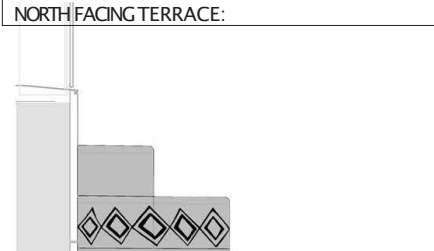
wywat ngang-kon-narranta nangnak beek. beek murrup. wywat tomboneit warr koondee ngaga boongim koondee beek mangkie onemda.  
*We understand and care for Country. Country is sacred. We ask you to listen deeply to Country with love.*

EAST FACING TERRACE:



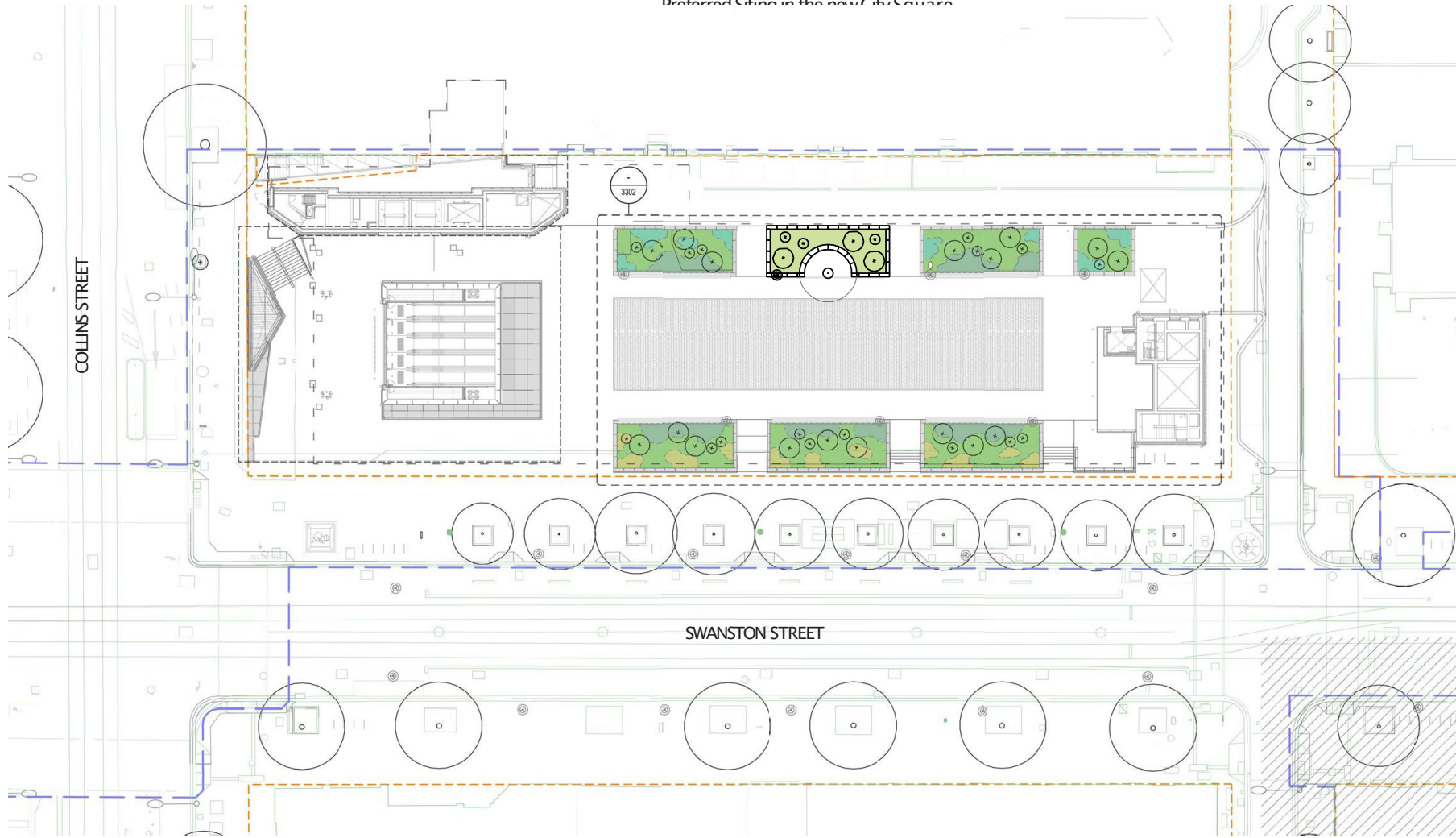
wominjeka  
*Welcome*

NORTH FACING TERRACE:



# SMOKING CEREMONY DISH & GATHERING SPACE

Preferred Siting in the new City Square



# SMOKING CEREMONY DISH & GATHERING SPACE

Freestanding cast bronze dish in granite base



*NOTE Manna gum leaf motif to be further developed with Traditional Owners and fabricator through hand sculpting process*



# SMOKING CEREMONY DISH & GATHERING SPACE

Rotating bronze dish with fixed lid



Cast Bronze Dish on Stone Plinth



Close-Up of terrace artwork by Lewis Wandin-Bursill in seating



Metal inlay text provided by Traditional Owners



# CAST BRONZE DISH AND LID

Traditional Owner Designs of the Manna Gum Motifs



SMOKING DISH WITH LID ON A GRANITE BASE

Dish and lid to be cast in bronze and hand etched with motifs of the manna gum

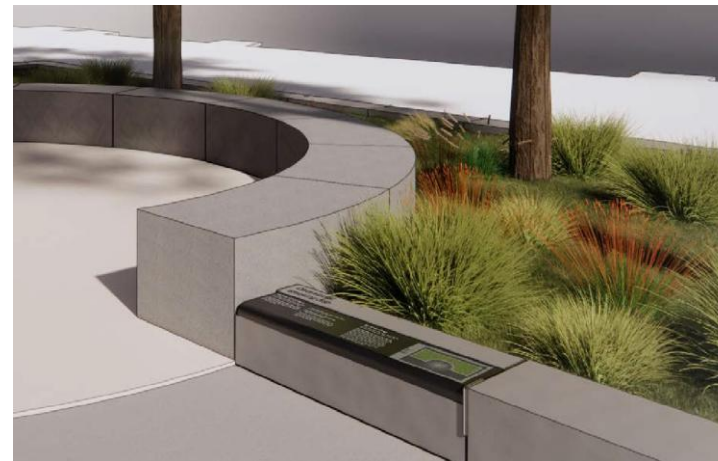
# SMOKING CEREMONY DISH & GATHERING SPACE

Bronze Inlay Text in Granite Paving BRONZE INLAY TEXT PROVIDED BY TRADITIONAL OWNERS

- *wilin taban kerrang kerranf booeegigat boort barmberring bik koen boingoone*
- *Fire with dampened eucalypt leaves creates smoke for cleansing the land for a new beginning*
  - Woi-wurrung language provided through WWCHAC



INTERPRETIVE SIGNAGE UNDER DEVELOPMENT

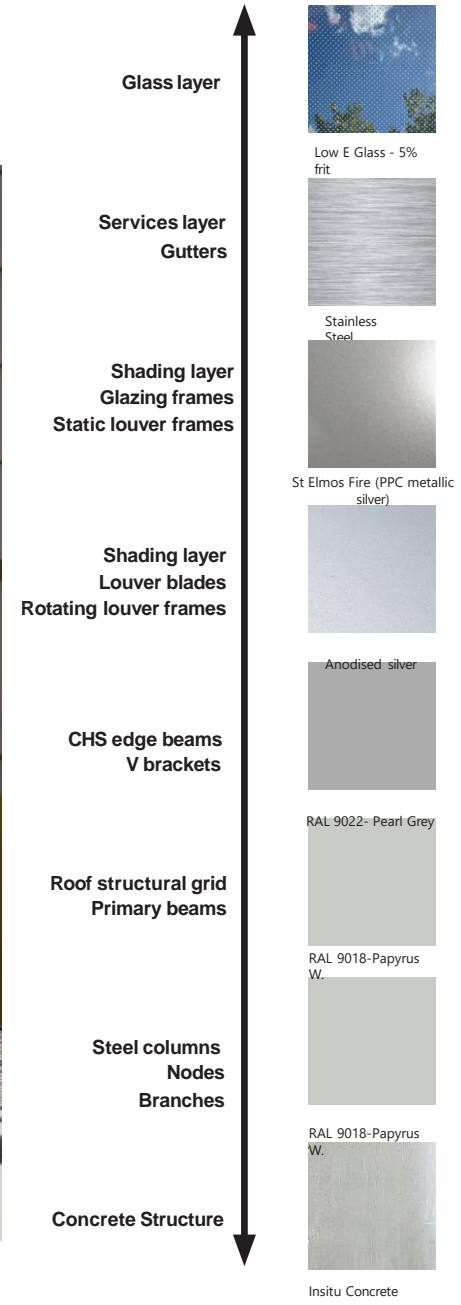




# Canopy Colours

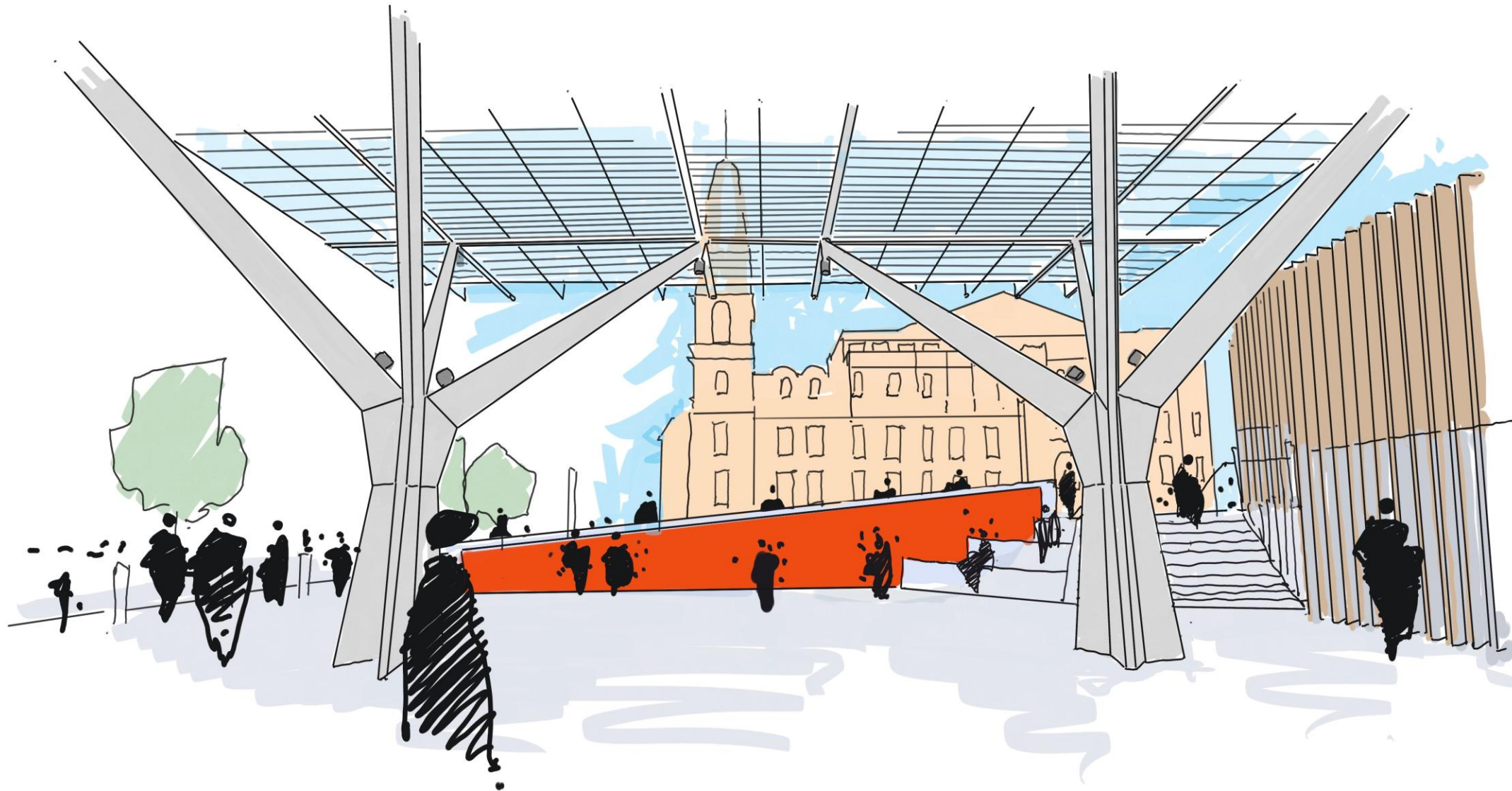
# CBDS - City Square canopy colour

Connection to Crypt option





# Mockridge Fountain Reimagined

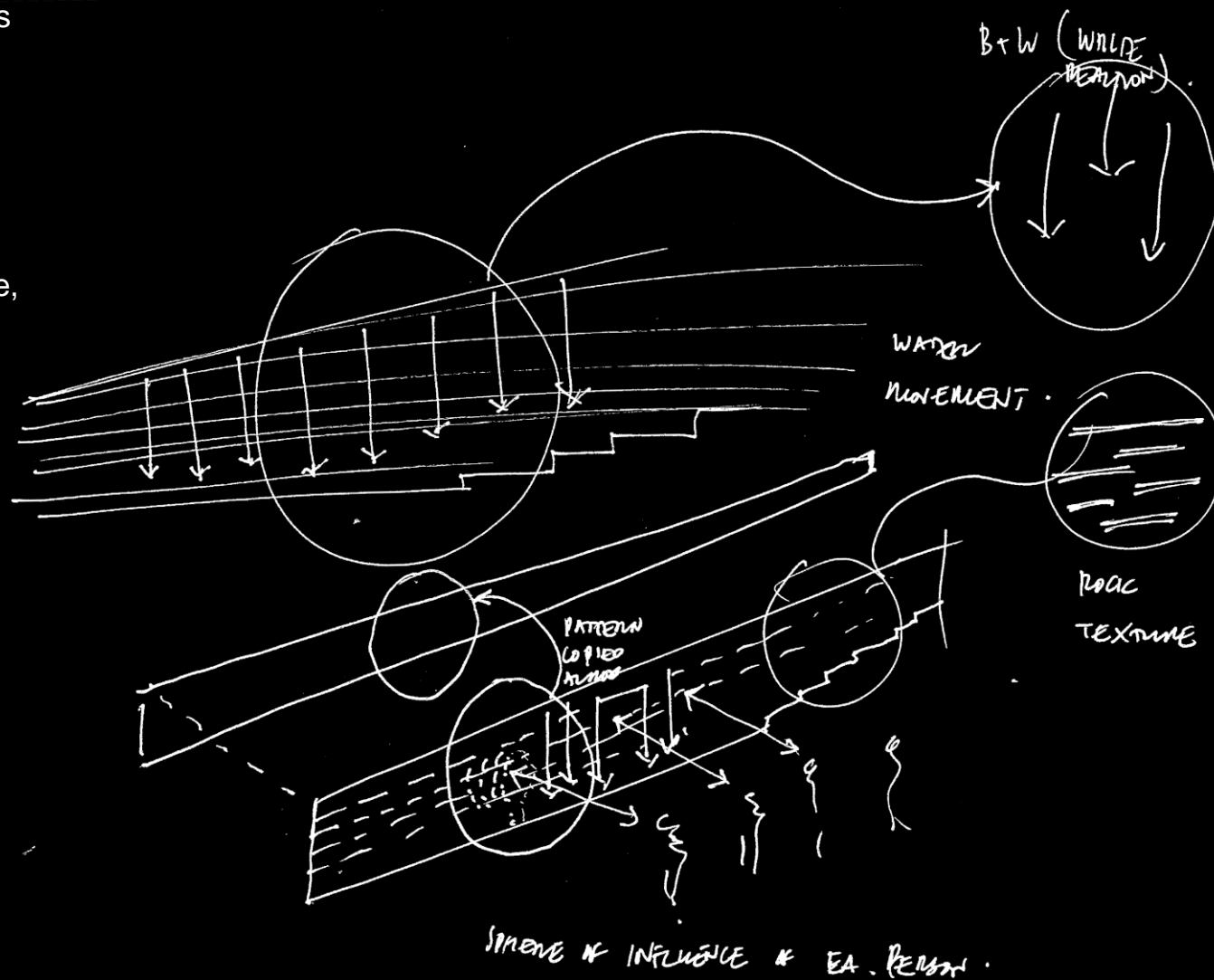


# SKETCH

This sketch shows the initial thinking of how the water concept is reflected in different design elements.

- Background Content - Water movement
- Front Pattern - Rock texture
- Interactive Content - People movement

\*The Collins Street side will echo the effects from the station side, but it will not be interactive.

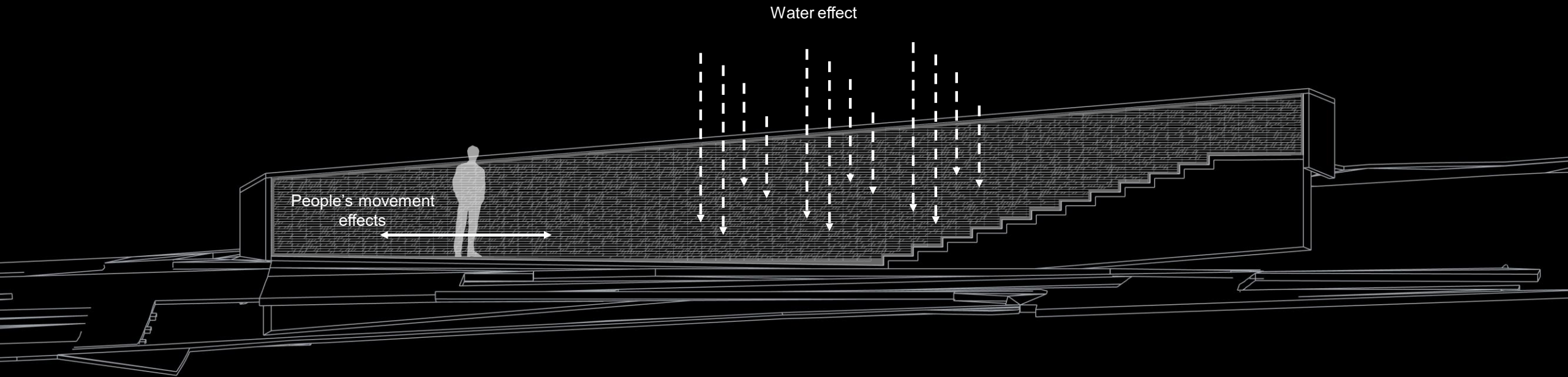




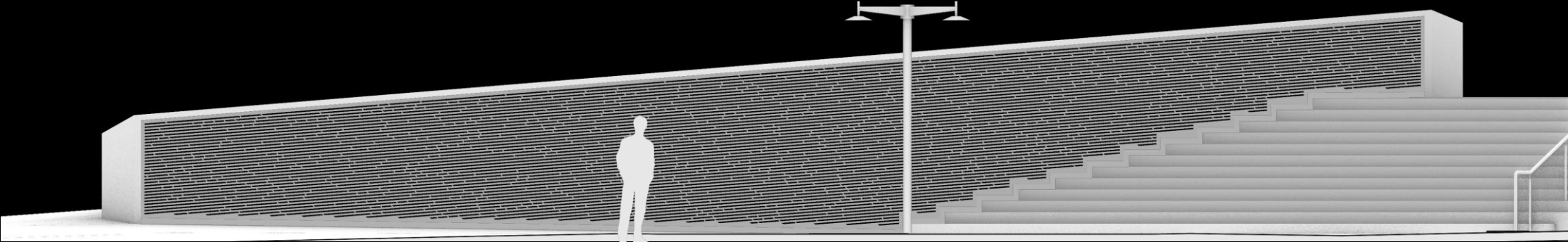
# CONTENT & INTERACTION

The digital content of the artwork will consist of 2 layers:

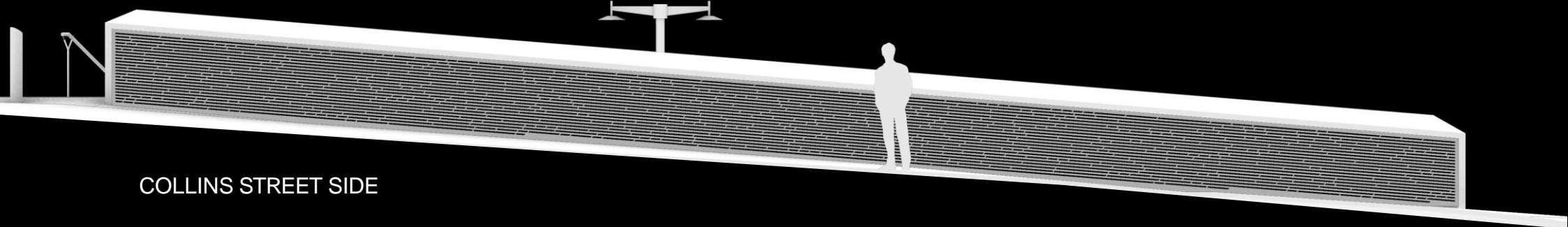
- Water movement (Background content)
- People movement (Interactive content)



# FACIA DESIGN - UPDATED

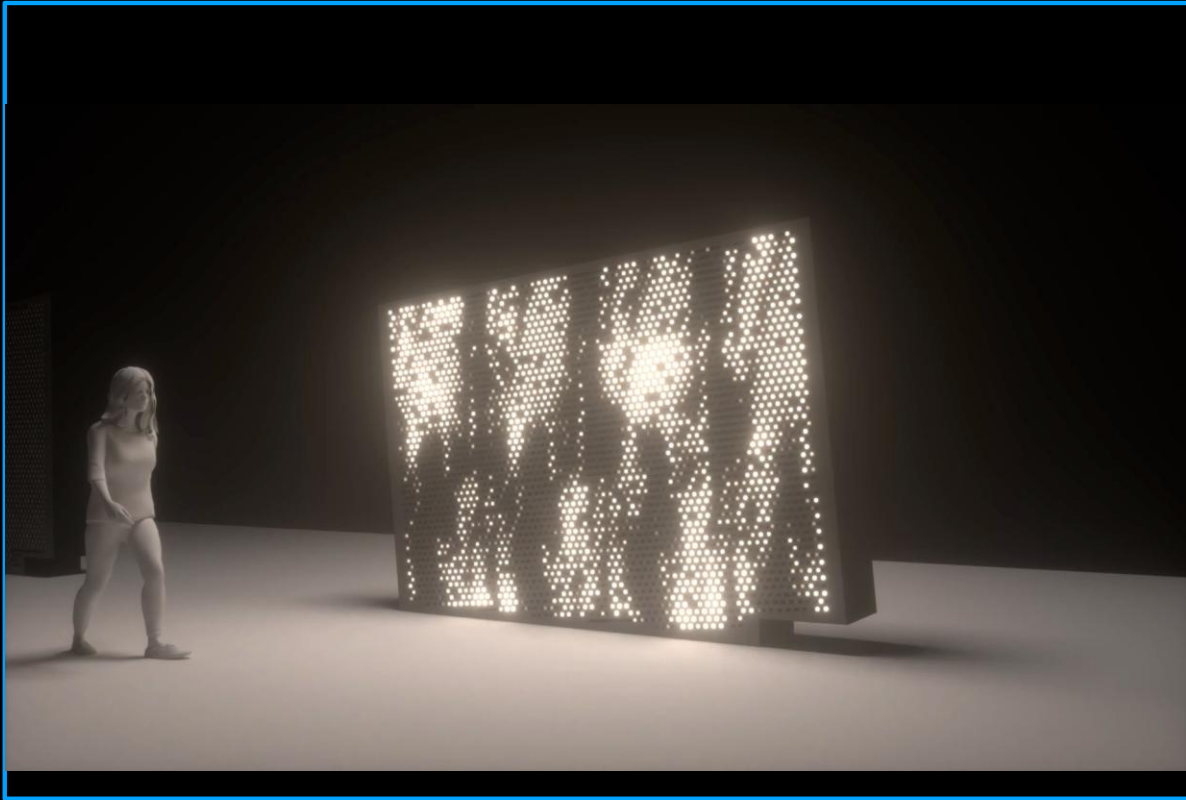


STATION SIDE

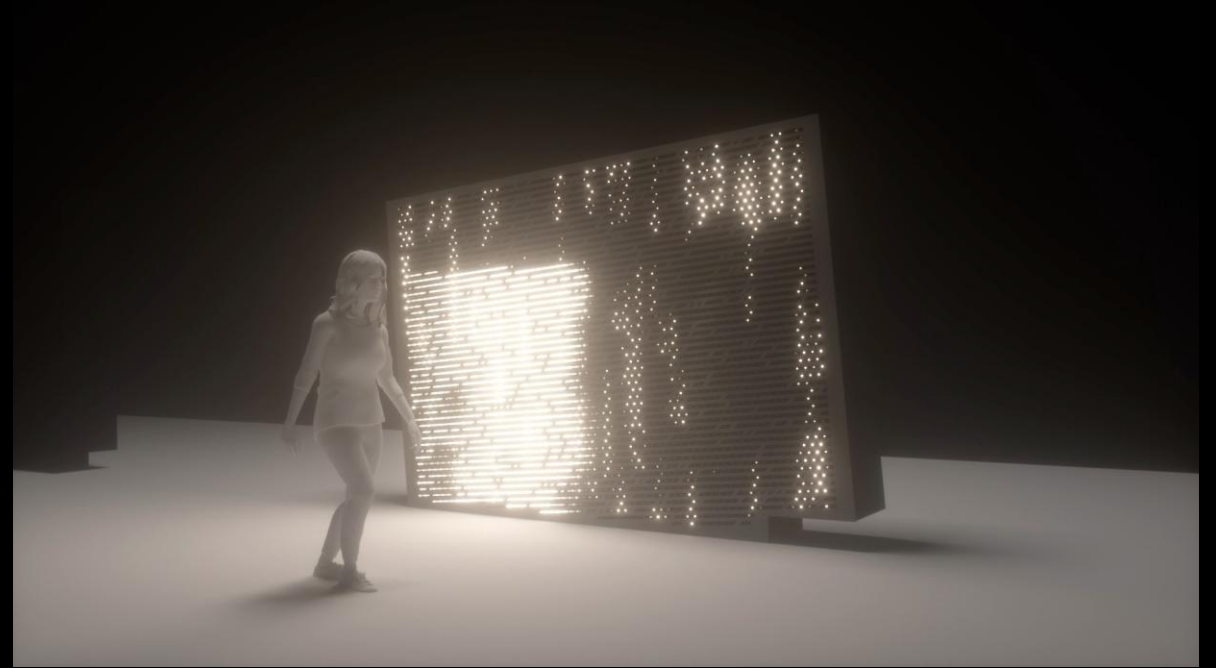


COLLINS STREET SIDE

# CONTENT - RECAP



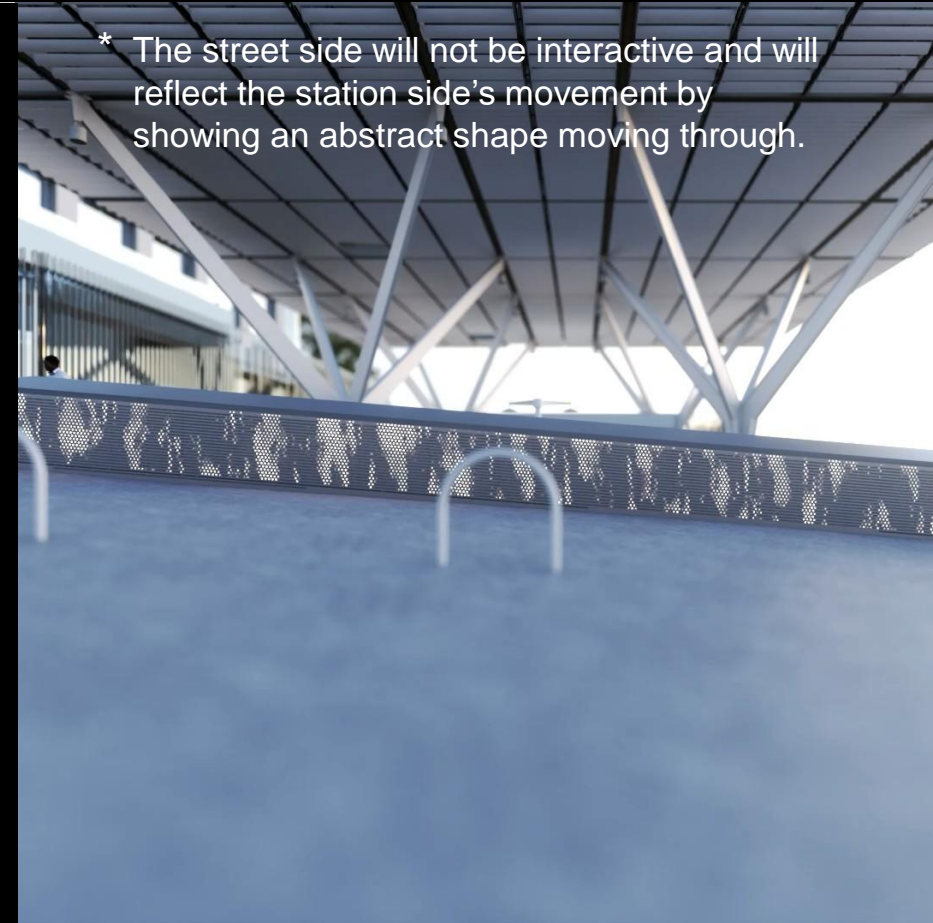
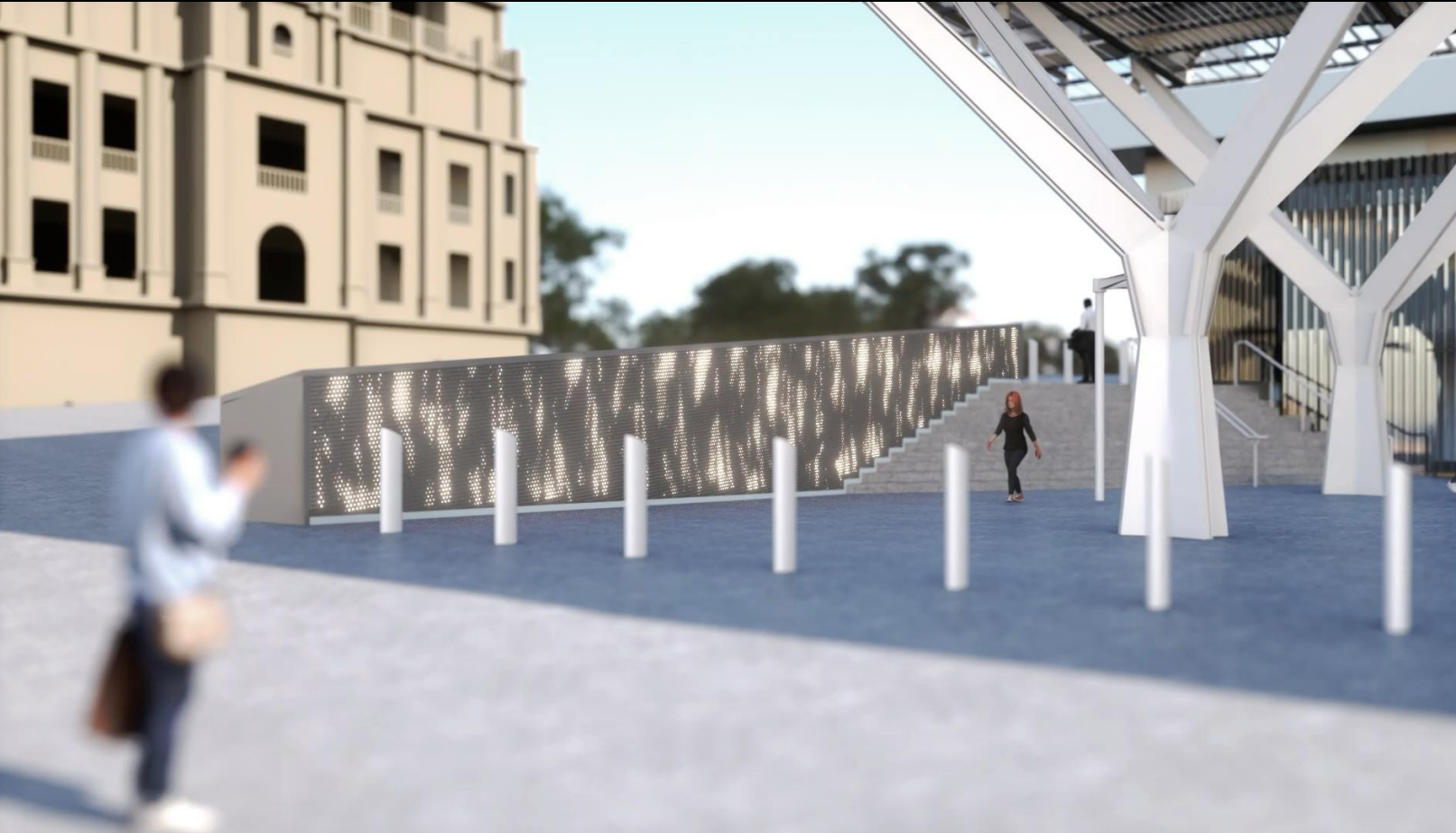
NEGATIVE SHADOW



POSITIVE SHADOW

# CONTENT - UPDATED

- \* These animations show the intended design direction of the content. The final effects will be programmed and tested/adjusted on-site.
- \* Different settings are possible for daytime and nighttime.
- \* Buffer content could be applied for overcrowded scenarios.




\* The street side will not be interactive and will reflect the station side's movement by showing an abstract shape moving through.





# Federation Square Canopy


Eastern Shard





Main Buildings



Stone Cobbles



Stone Walls



### Federation Square Entry

Colour Considerations for Primary Structure and Roof Soffit

Deep Colour  
Stone Finishes



Neutral Colour  
Federation Square & Context



Roof Soffit



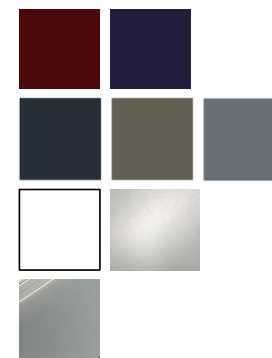
Roof Top Surface



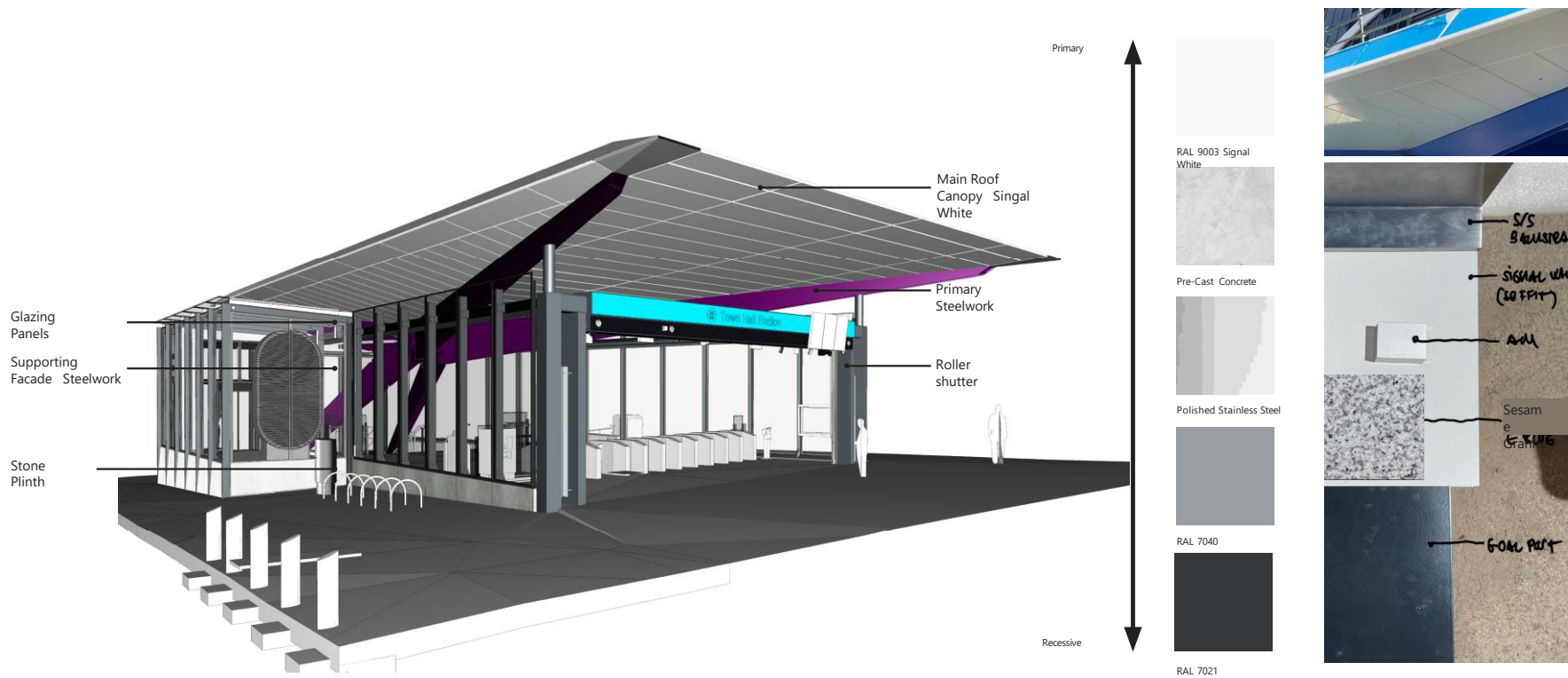


Recommended colour: Powerful Violet (RAL 310, 20, 30)









# North-East Pod

## New Balustrade Finishes

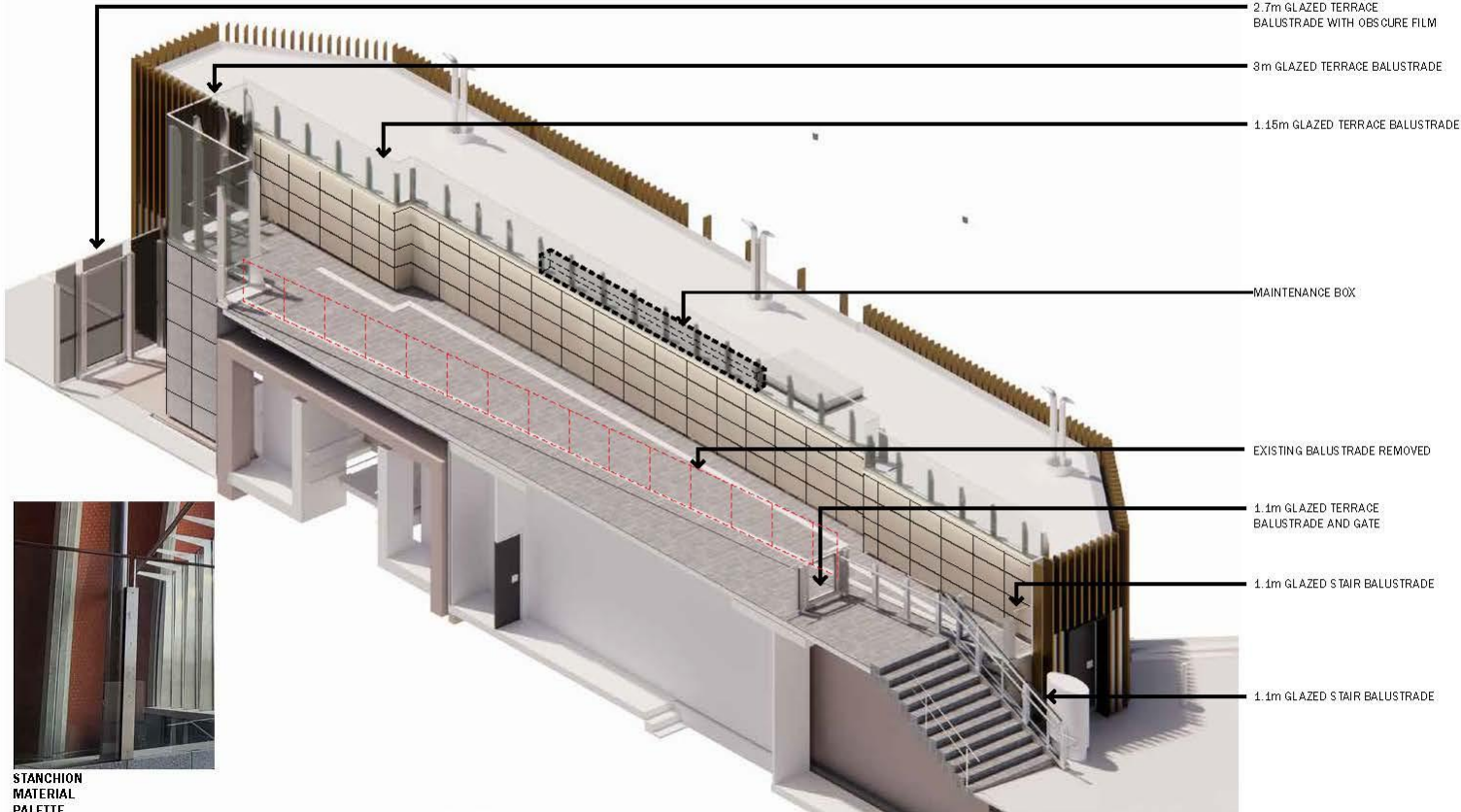
## Security & Ventilation

# North-East POD (new balustrade)



CBD SOUTH - CITY SQUARE - WESTIN

## EXISTING BALUSTRADE REMOVAL & PROPOSED NEW BALUSTRADES



STANCHION MATERIAL PALETTE

# Western Terrace Update (new balustrade)



CBD SOUTH - CITY SQUARE - WESTIN

## EXISTING BALUSTRADO REMOVAL & PROPOSED NEW BALUSTRADOES



STANCHION MATERIAL PALETTE

1.1m GLAZED STAIR BALUSTRADO

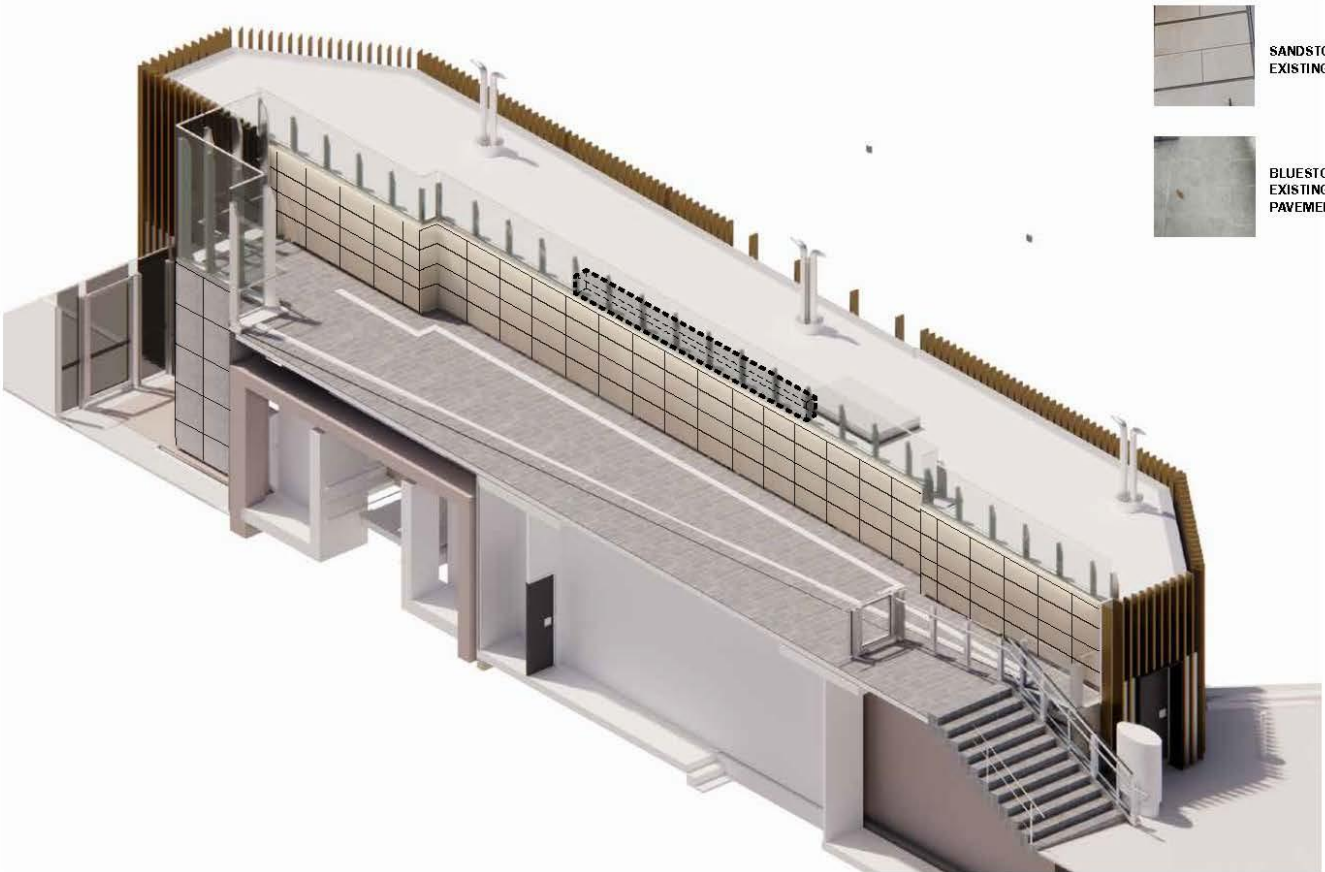
LEVER SET WITH SHARED KEY

# Western Terrace Update (Finishes)



CBD SOUTH - CITY SQUARE - WESTIN

## WESTIN TERRACE FINISHES; FLOOR & WALL FINISHES

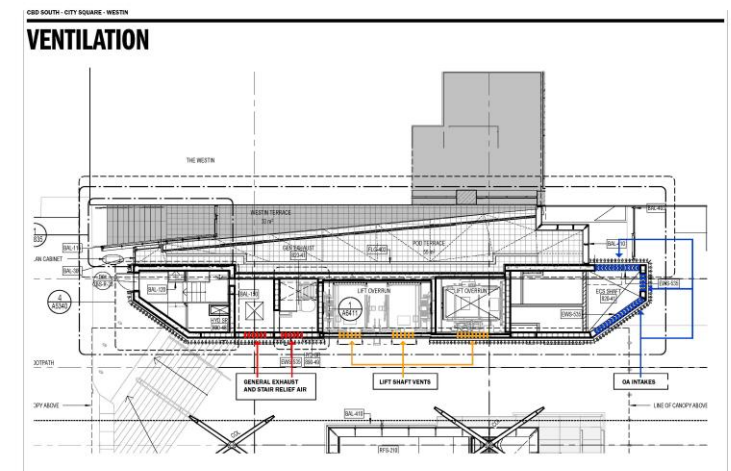
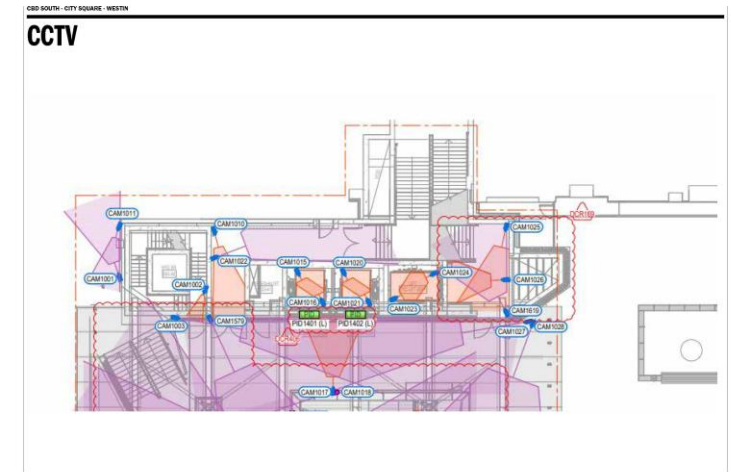
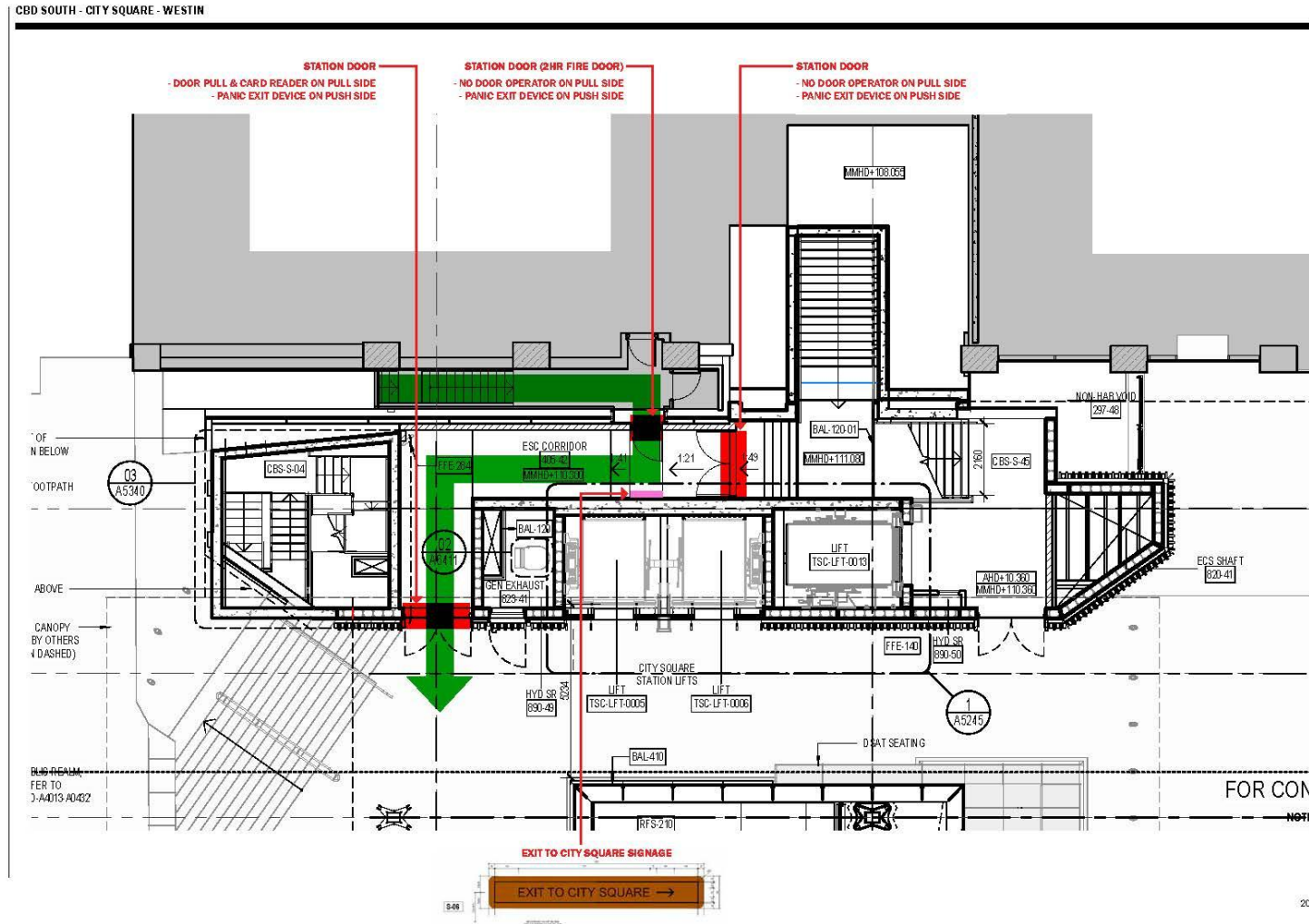


SANDSTONE TO MATCH  
EXISTING WESTIN CLADDING



BLUESTONE TO MATCH  
EXISTING WESTIN TERRACE  
PAVEMENT

# Western Terrace Update (Emergency Egress from Carpark)





# Town Hall Station update

*Presenter: Blythe Chidgey*

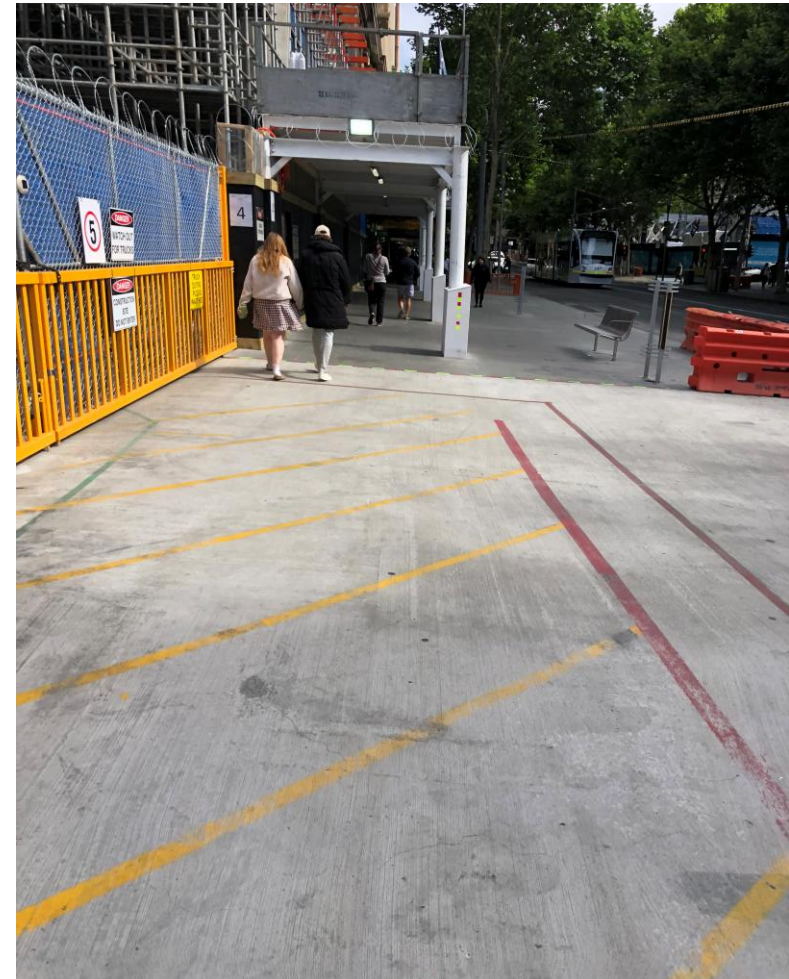
# Town Hall Station

Swanston Street



## Milestones and lookahead

- Swanston Street footpath re-opened after installation of the GPT and strata vaults as well as the completion of entrance columns
- New bluestone paving has been installed except for within the site driveway





# Town Hall Station

City Square – station entry canopy



## Milestones and lookahead

- Work is underway on the construction of the station entrance canopy at City Square
- Works are ongoing on Collins Street with a minor footpath diversion in place while works take place within the existing footpath

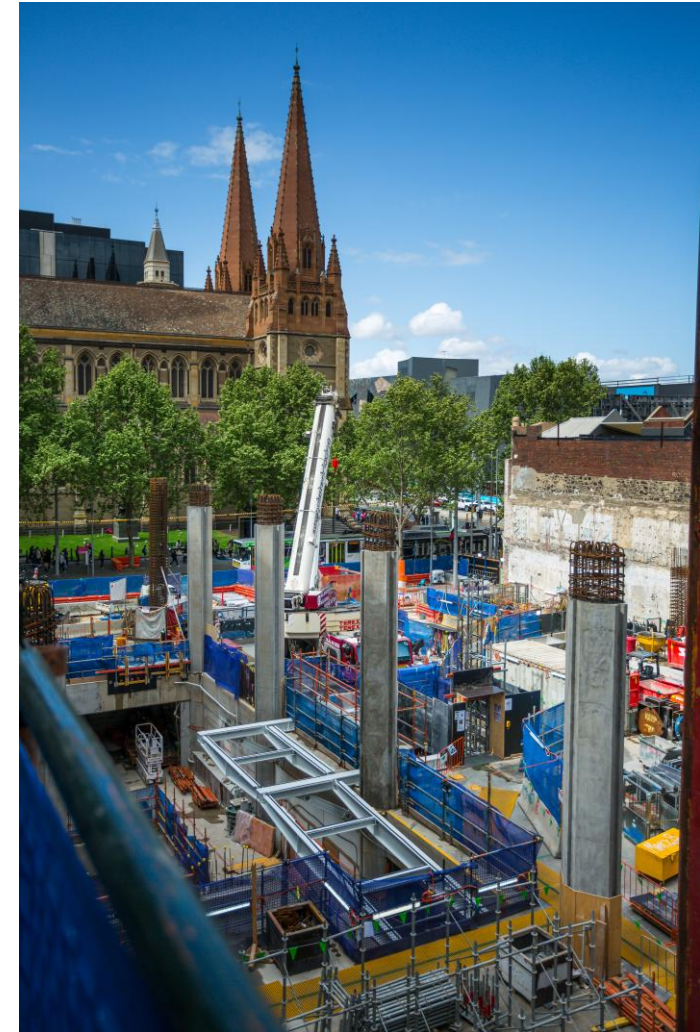


# Town Hall Station

Flinders Quarter above ground works

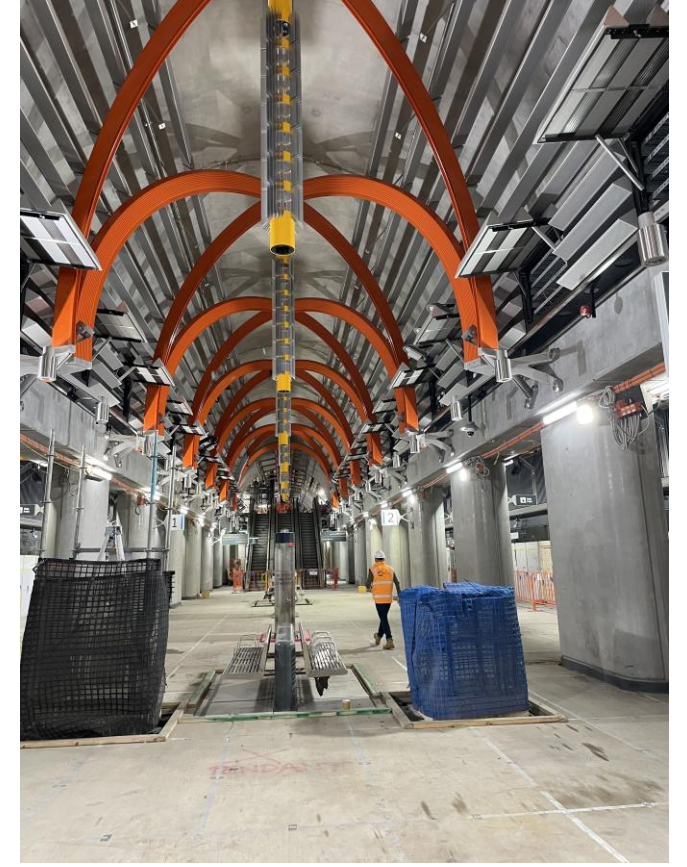


## Milestones and lookahead



# Town Hall Station

Platform and cavern fit out including escalators



# Town Hall Station

Federation Square – final arch pour



- Over the past five years, the Town Hall Station Caverns have poured a total of 28,473 m<sup>3</sup> of concrete across 676 individual pours
- The team recently achieved a significant milestone with the successful completion of the final arch pour in the Fed Square Link and the last primary structure for the Town Hall Station Caverns

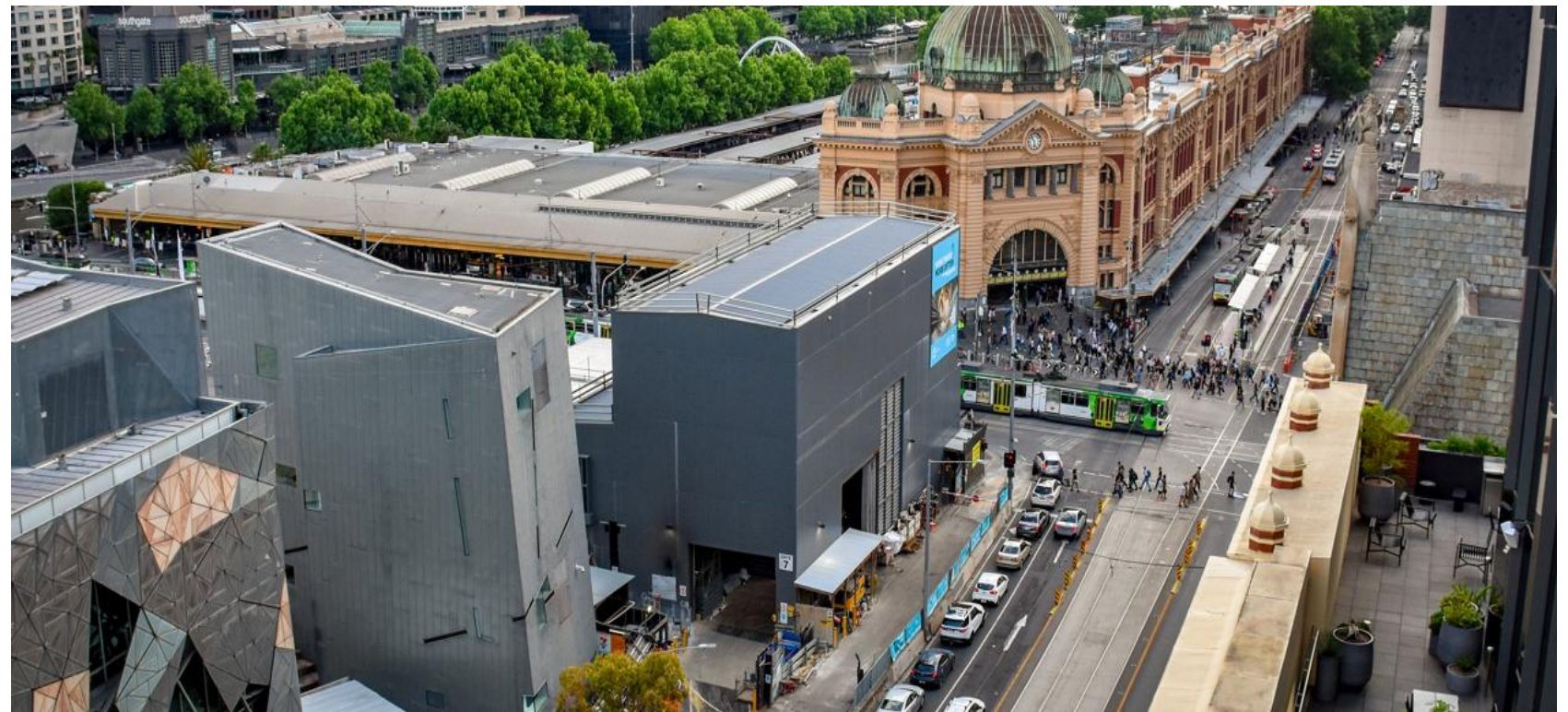


# Town Hall Station

## Flinders Street Eastbound closure

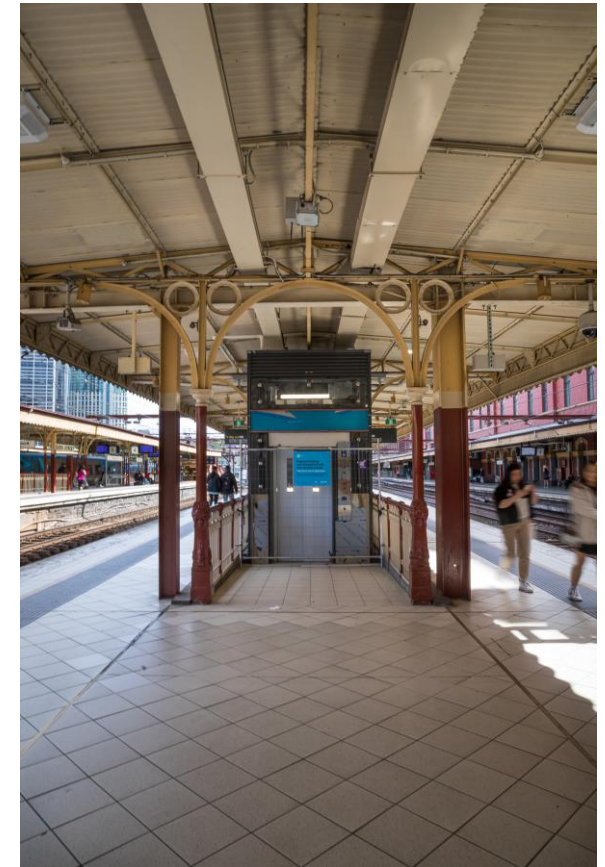


- Flinders Street eastbound between Degraeves Street and Swanston Street has been closed to traffic since September 2019. To assist with completing major construction on Town Hall Station, this section of Flinders Street will remain closed to traffic until April 2025



# Town Hall Station

Degraves Subway re-opening



# Town Hall Station

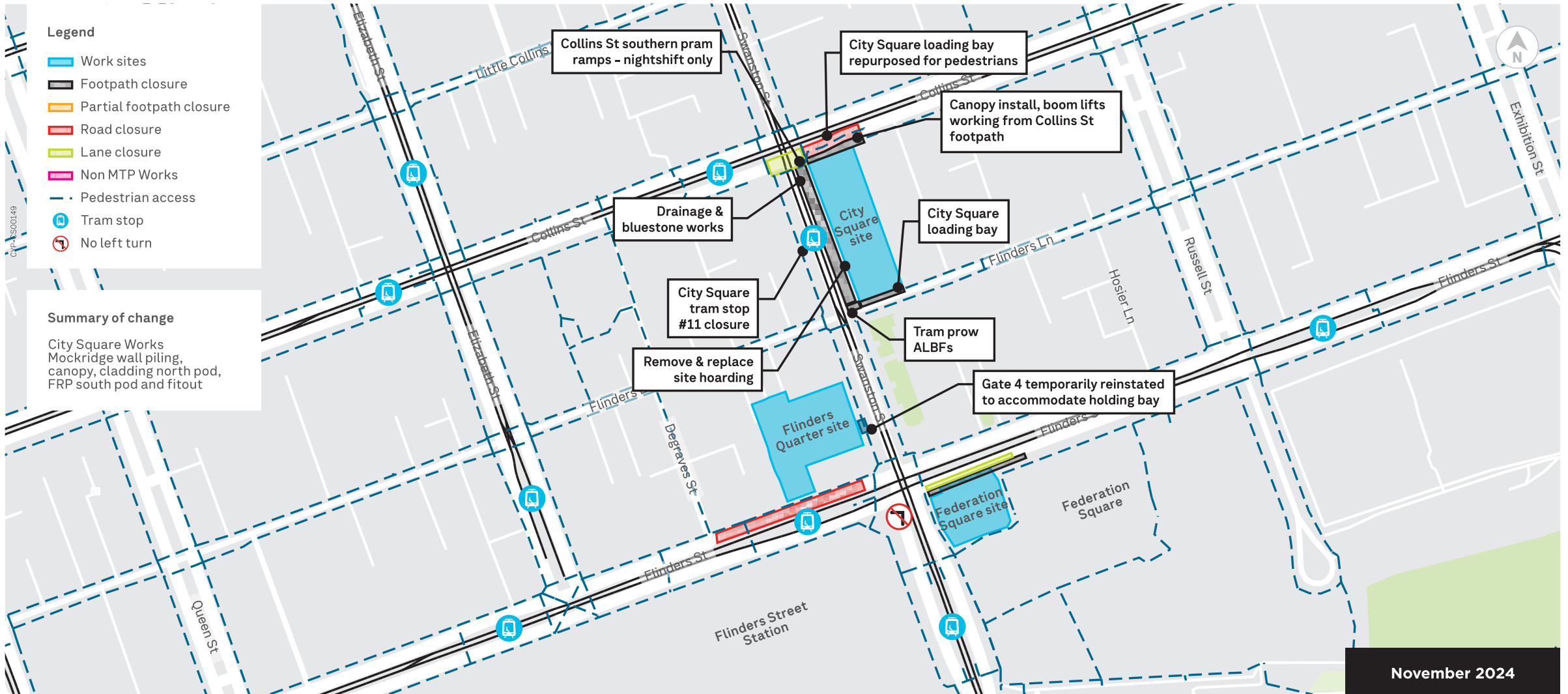
## Long-term lookahead



| ACTIVITY  | NOV   | DEC   | JAN '25 | FEB   | MAR | APRIL | MAY |
|---|-------|-------|---------|-------|-----|-------|-----|
| Demobilisation of City Square tower cranes      | ————— |       |         | ————— |     |       |     |
| Collins Street southern footpath works          | ————— |       |         |       |     |       |     |
| City Square above ground structures             | ————— |       |         |       |     |       |     |
| City Square civil and landscaping               | ————— |       |         |       |     |       |     |
| Flinders Street eastbound closure               | ————— |       |         |       |     |       |     |
| Fed Square site and acoustic shed removal       |       | ————— |         | ————— |     |       |     |
| Fed Square above ground works (inside hoarding) | ————— |       |         |       |     |       |     |

# Upcoming traffic changes

November 2024

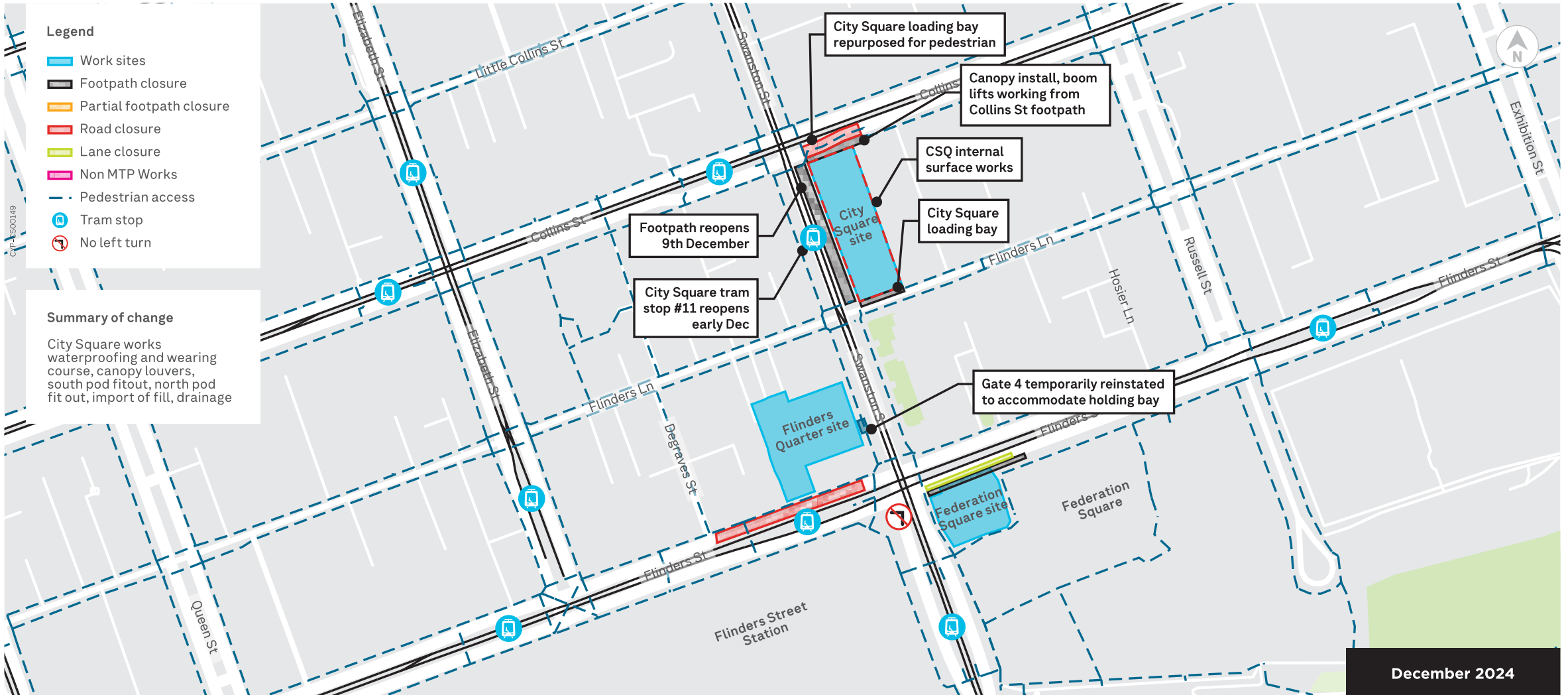


November 2024



# Upcoming traffic changes

December 2024



December 2024



# Questions



# Metro Tunnel Creative Program update

*Presenter: Teresa Scalise*

Hoardings at City Square/Swanston Street have been removed including Darcy Vescio, Under Foot and general project branding due to construction work and footpath closure in this area

# NOLA – Weekdays ACM panels refresh Franklin Street West



Creative  
Program

- installed 2/10
- hoarding refresh using Weekdays artwork for NOLA district

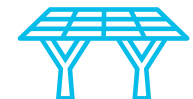
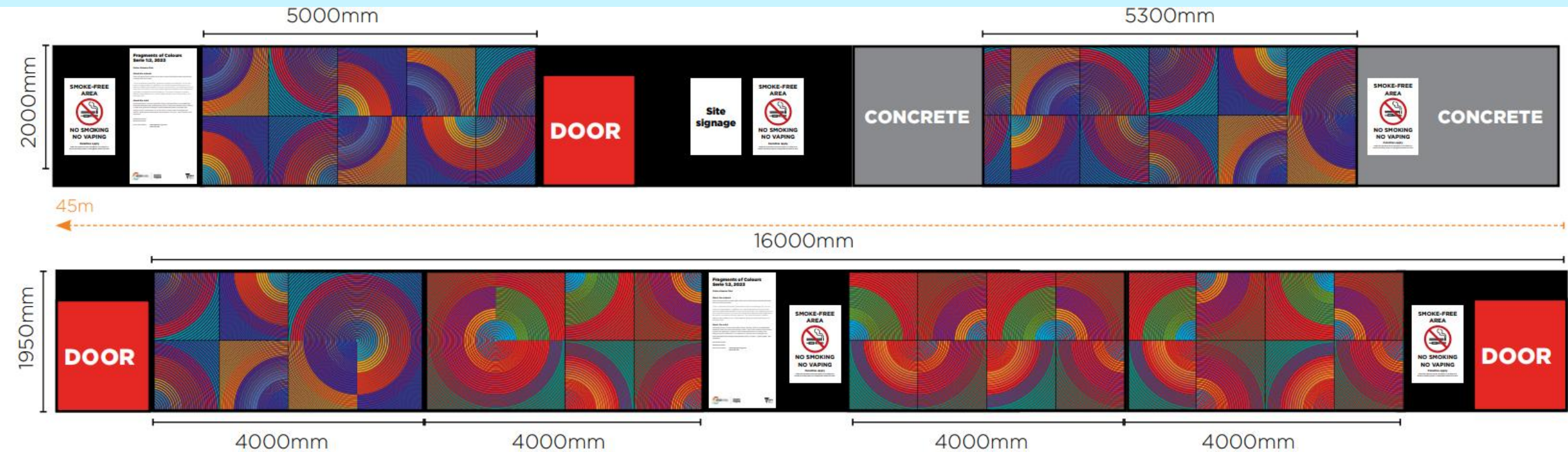


- Additional branding corflute panels installed along following hoarding configuration change



# Carlos Almenar Diaz Baskerville Lane

- ready to install once planter boxes removed and hoardings repaired
- hopefully before year end.



## Town Hall Station:

- new artwork install dates and location have changed due to changes to City Square hoardings; will now be installed on opposite side of Swanston St near Young and Jackson's install planned for later this month

## Scott Alley:

- new Christmas artwork by Marc Martin being installed mid-November



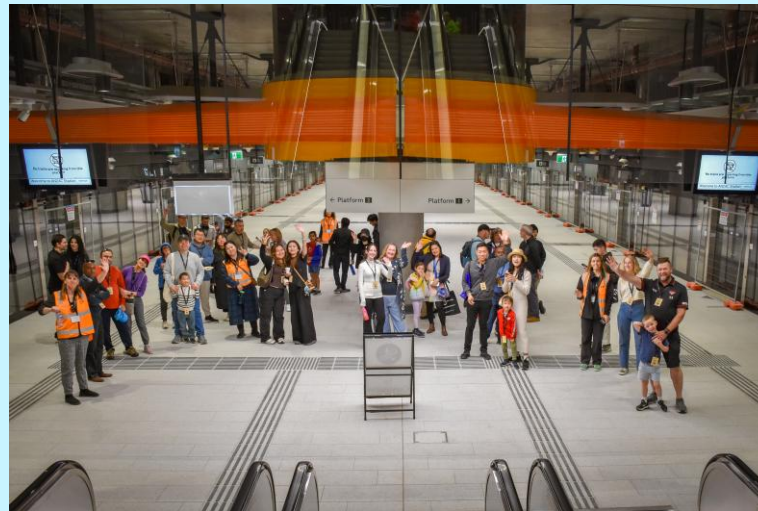
# Anzac Station family & community day

## Saturday 12 October



Creative  
Program

- 2000 people attended tours - well received, positive feedback and lots of food & entertainment options

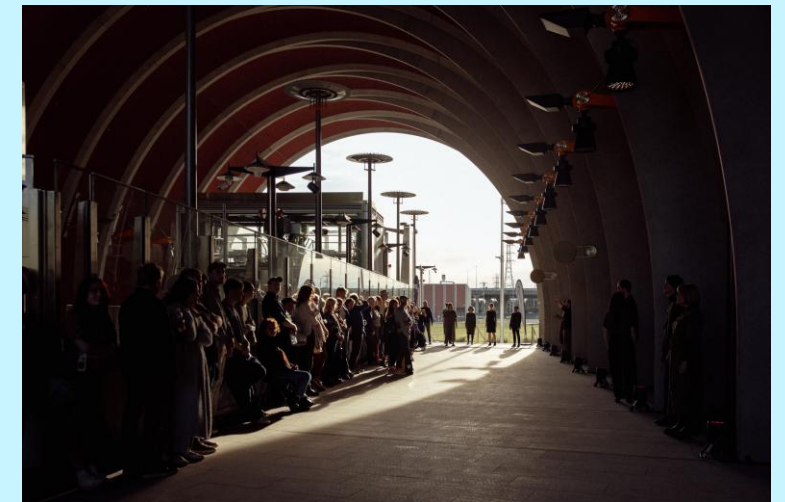


# Arden Sounds in partnership with the Melbourne International Jazz Festival Saturday 26 October



Creative  
Program

- 180 attendees
- Performances by artists Allara, the Brandee Younger Trio (US), and Invenio
- 3 x one hour performances





# Questions