

Construction update



State Library Station

February 2025

The Metro Tunnel Project's State Library Station is moving towards the final phase of construction, including works on the station entrances, fit-out of the underground station and reinstatement of community space.

Opening later this year, the Metro Tunnel will create a new end-to-end rail line from Sunbury in the west to Cranbourne/Pakenham in the south-east, with bigger and more modern trains, and five new stations.

Works snapshot: February 2025

In December the fourth and final glass panel was installed marking the completion of Danie Mellor's artwork, *Forever*, featuring historical photographic portraits of Wurundjeri Woi Wurrung women.

Public realm and reinstatement works continued, including installation of bluestone pavers across the precinct, and internal fit-out of the station is continuing in preparation for operations this year.

Construction works within the State Library Station precinct over the next month includes:

- Main station entrance construction and underground fit-out works at the La Trobe, A'Beckett and Franklin Street sites

- Finishing works on the service buildings at the Little La Trobe Street site
- Fit-out of the underground passenger connection to Melbourne Central Station
- Capping beam removal works at the Franklin Street sites
- Public realm works on Swanston, La Trobe and Franklin streets.

Further information on these works can be found overleaf or at metrotunnel.vic.gov.au

Business support

While the new State Library Station will be a significant boost for the local area, construction activities can impact local businesses.

In response to this, our Business Support Team assists businesses through the disruption and any permanent changes that will take place.

Please see the promotion in this notification for **Pool House Coffee at 6 Franklin Street, Melbourne**. We look forward to promoting more local businesses as the project progresses.



Sign up for updates
Subscribe for email and SMS updates
at metrotunnel.vic.gov.au/subscribe

Construction partner:



Cross
Yarra
Partnership



When are we working?



Normal construction hours

7am to 6pm, Monday to Friday
7am to 1pm, Saturdays



Out of hours

Some works are required to take place out of normal construction hours



24 hours

24 hour works are sometimes required during peak construction activities

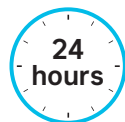


Internal fit out works progressing at State Library Station

Upcoming works in your area

La Trobe Street site

24-hours, Monday to Friday
7am to 12am, Saturdays and Sundays



Swanston Street western footpath and northbound bike lane closure

24-hours, Monday to Sunday, ongoing until March

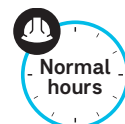
La Trobe Street eastbound road and bike lane closure

24-hours, Monday to Sunday, ongoing until March

- Construction of the main entrance building including floors and walls. This involves the use of a crawler crane, elevated work platforms, forklifts, generators, concrete pumps, and other tools and equipment to undertake steel fixing, waterproofing, formwork installation and concrete pours
- Concrete pours involve regular deliveries, the use of concrete trucks, concrete pumps and concrete finishing equipment
- A footpath closure is in place at Swanston Street, adjacent to the work site. The closure is facilitating deliveries and installation of materials including steel beams and glass, lighting, elevators, escalators and ticket gates, as well as surface works including installation of underground utilities, pavement and bollards (see map)
- Utilities works are ongoing, and involve excavation using a vacuum truck, installation of water, drainage, electrical and telecommunication services, connection of new services to the existing network, and disconnection and removal of redundant services
- Ventilation equipment operation will be required during all works below ground, and site lighting will be required for evening and overnight works
- Regular truck movements to deliver and remove equipment and construction materials are required
- Some works at the La Trobe Street site will generate medium to high levels of noise. Please contact the project team if you have any concerns.

Melbourne Central Station

7am to 6pm, Monday to Friday



- Fit-out of the underground passenger connection between the new State Library Station and Melbourne Central Station
- Works include service relocations and fit-out works around the escalators, including steelworks, cladding, tiling and finishes.

Little La Trobe Street site

7am to 3am, Monday to Friday
7am to 6pm, Saturdays



Little La Trobe Street road closure

24-hours, Monday to Sunday, ongoing until March 2025

Works continue on the service buildings that will provide critical cooling towers required for final power energisation and station operation.

To support these critical works, a long-term closure of Little La Trobe Street directly adjacent to the work sites is currently in place. Motorist access into Little La Trobe Street and Literature Lane is maintained via Elizabeth Street (see map).

Key activities taking place during this closure include:

- Aboveground structure works involving the use of trucks, cranes, elevated work platforms, rattle guns and hand tools, and other tools and equipment required for the delivery and installation of roof steel and sheeting, cladding and glazing for building façades and installation of acoustic and external louvres
- Use of a mobile crane on the road within the road closure
- Deliveries to the La Trobe Street site involving the use of trucks and a forklift on Little La Trobe Street

- Pedestrian stop and hold arrangements will occur during deliveries to the La Trobe Street site gate, which is accessed from the Little La Trobe Street southern footpath. Please allow extra travel time
- Site reconfiguration works are continuing at the La Trobe Street site These involve intermittent closures of the southern and northern footpaths (see map)
- During these works, pedestrian access to the Scape building will be maintained from Swanston Street only. Access to all other residential buildings and businesses on Little La Trobe Street will be maintained from Elizabeth Street only
- Following the completion of paving works on the northern footpath at Little La Trobe Street, the footpath will be reopened. Public realm and reinstatement works will commence on the southern footpath from early March. More information will be available closer to the time.

A'Beckett Street site

24-hours, Monday to Sundays, ongoing



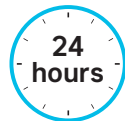
Stewart Street road closures

Monday to Friday 24-hours, Saturdays 7am to 3pm, ongoing until March

- Works continue on the construction, precast installation and fit-out of the lower station passenger areas and operational rooms. This includes steel and concrete deliveries, unloading of materials within the acoustic shed, and use of a mobile crane, trucks and hand tools
- West wall cladding and steel removal, waler beam and pile removal are required at the western end of the A'Beckett Street acoustic shed. This involves the use of an excavator with a piling attachment and a crane on the road under a closure of Stewart Street
- Ongoing road closures of Stewart Street is required. During these closures, access to A'Beckett Tower will be maintained via A'Beckett Street only, and local access to Stewart Street will be maintained via Franklin Street only (see map)
- The road closure will only be in place during work hours. Impacted stakeholders will be notified directly
- Access to buildings will be maintained at all times
- Concrete pours at this site are ongoing.

Franklin Street sites

24-hours, Monday to Sunday, ongoing



Franklin Street road closure between Swanston and Stewart streets

24-hours, Monday to Sunday, ongoing

Franklin Street northern footpath closure between Swanston and Stewart streets

24-hours, until March

Franklin Street southern footpath closure between Swanston and Victoria streets

24-hours, Monday to Saturday, ongoing

Franklin Street northern footpath closure between Swanston and Victoria streets

24-hours, Monday to Saturday, ongoing

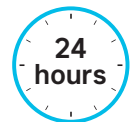
- Works continue to build a station entrance on Franklin Street, and construct and fit-out the station passenger areas and operational rooms, as well as aboveground ancillary structures
- These works include steel tying, waterproofing and concreting to construct slabs and walls, as well as fit-out, mechanical, electrical and plant works
- Delivery of steel and concrete using trucks and unloading materials is ongoing. Truck access to the Franklin Street East site is from Victoria and Swanston streets. Stop and hold arrangements are in place
- Capping beam removal works are continuing at both Franklin Street sites, requiring closures of the southern footpath between Bowen and Swanston streets. Pedestrian stop and hold arrangements will be in place on the southern footpath between Swanston and Stewart streets. Utility works will also be required in this area
- From early-February, Swanston Street northbound will be closed for pedestrians and cyclists at the intersection of Swanston and Franklin streets for stormwater drainage works. The pedestrian and cyclist detour will remain in place during this temporary closure and tram services will not be impacted
- Aboveground structure works will take place within the existing Franklin Street westbound road closure
- Access to Melbourne City Baths, RMIT buildings and businesses is being maintained.

Reinstatement and public realm works

Staged reinstatement and public realm works are ongoing throughout the State Library Station precinct.

Swanston Street western partial footpath closure between La Trobe and A'Beckett streets

24-hours, Monday to Sunday, until late-March



Partial footpath closure at the corner of Little La Trobe and Swanston streets

24-hours, Monday to Sunday, until late-March

- Public realm works are continuing on the western side of Swanston Street near Little La Trobe Street (see map)
- Intermittent partial closures of the Swanston Street western footpath are required between La Trobe and A'Beckett streets. Through access for pedestrians and access to businesses is being maintained (see map)
- Parking spaces in this area are limited to one accessible parking space and one loading zone space between Little La Trobe and A'Beckett streets (see map)
- Public realm works are ongoing on the corner of Swanston Street and the northern side of Little La Trobe Street until early March and will then switch to the Little La Trobe Street southern footpath.

- Public realm works will be required on Literature Lane, adjacent to the work site in February. Pedestrian access will be maintained
- Business access will be maintained. Impacted stakeholders will be notified directly.

Franklin Street northern footpath closure between Victoria and Swanston streets

24-hours, Monday to Saturday, ongoing

- Reinstatement and public realm works are continuing at Franklin Street, adjacent to the Franklin Street East site
- These ongoing works require the closure of the Franklin Street northern footpath between Victoria and Swanston streets
- During February and March access to the accessible entrance door at Melbourne City Baths will be via Victoria Street only (see map)
- During February, access to Poolhouse Coffee will be available via Swanston and Franklin streets. From March, access will be via the Melbourne City Baths main entry on Swanston Street.

Franklin Street northern footpath and road closure between Swanston and Stewart streets

24-hours, Monday to Saturday, ongoing

Swanston Street pedestrian crossing closure at Franklin Street

24-hours, Monday to Saturday, ongoing

- Reinstatement and public realm works are continuing at Franklin Street, between Swanston and Stewart streets
- These works are taking place under a partial closure of the Franklin Street northern footpath between Swanston and Stewart streets, and the western north-south crossing at Swanston Street
- The works are taking place in stages, with access to business and residential buildings maintained (see map)
- Some works are required to take place when trams aren't running and will generate medium to high levels of noise. Please contact the project team if you have any concerns.

Groundwater monitoring

Victoria, Franklin, Swanston and Therry streets

Monday to Fridays, 7pm to 5am under lane closure (as required)



- Intermittent testing of previously installed groundwater wells on Victoria, Franklin, Swanston and Therry streets on the road and footpath is ongoing
- This involves setting up small, localised traffic controls on footpaths and overnight lane closures with traffic management in place
- These works will generate low levels of noise.

Oversize deliveries

All sites

10pm to 7am, ongoing



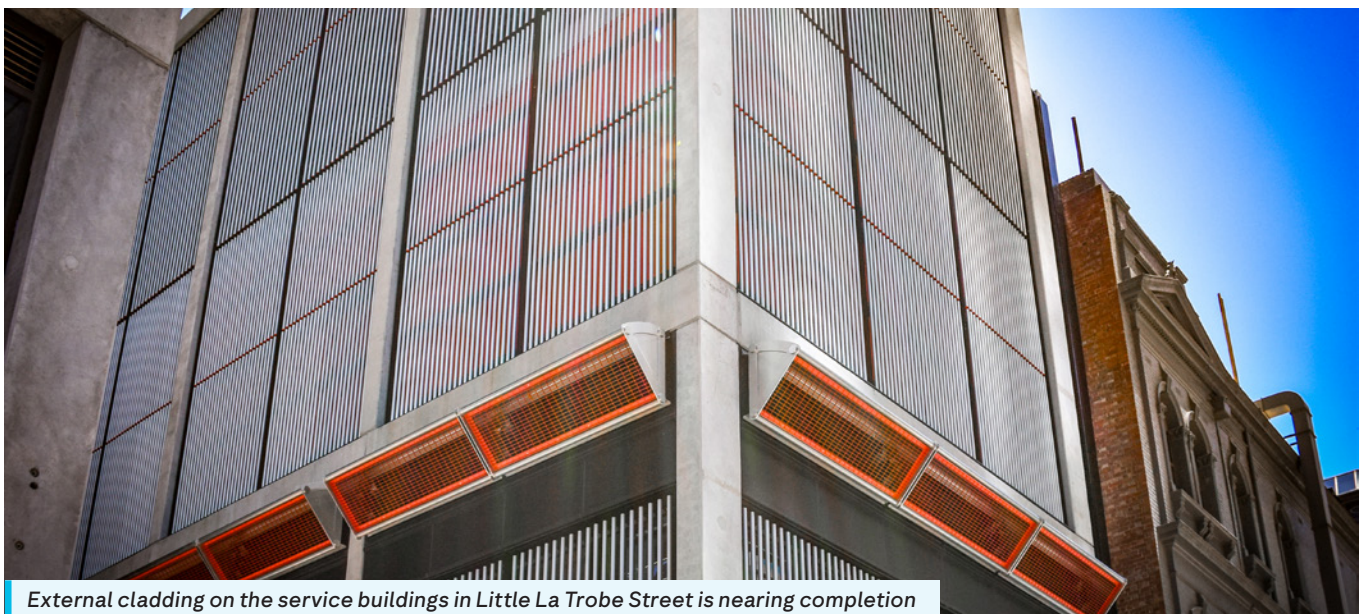
- In addition to regular deliveries to site, out of hours deliveries will occur intermittently to minimise traffic disruption and to ensure the safety of the public and our workers.

Yarra Trams works

Yarra Trams will undertake night works at the La Trobe Street / Swanston Street tram stop (Stop 6), from 7pm to 5am, Sunday 2 February to Sunday 9 February (Sunday to Thursday nights only).

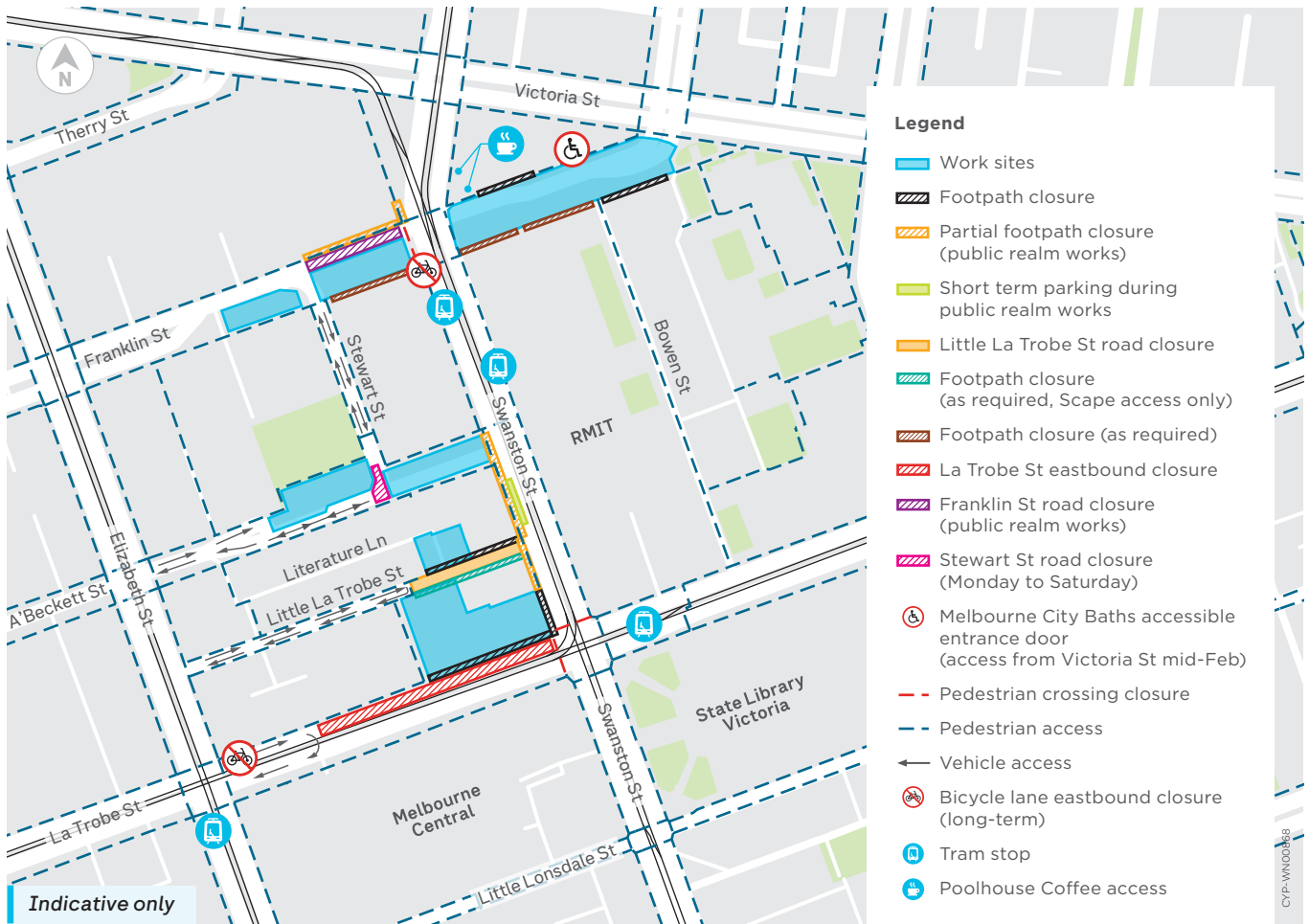
During these hours, La Trobe Street will be closed between Swanston and Russell streets, with local access maintained. Footpaths and tram services will not be affected. Please follow signage and traffic management carefully around the works.

For more information, please call Yarra Trams on **1800 800 007**.



External cladding on the service buildings in Little La Trobe Street is nearing completion

Works area map



Dress rehearsals for the Metro Tunnel are underway

The Project kicked off its final year with a 10-day testing blitz that saw more than 2,600 train trips through the Metro Tunnel. Trains travelled between Hawksburn and West Footscray through the new tunnels along the Sunbury and Cranbourne/Pakenham lines at a frequency between 8 and 12 per hour. The frequency is expected to increase in the coming months as we refine our testing.

The 10-day blitz was an opportunity for Metro Trains staff to become more familiar with the project, with another 46 train drivers trained to operate the new High Capacity Metro Trains (HCMTs) – taking the total number of trained drivers to around 200. This work is part of a new phase known as Trial Operations.

Trial Operations are a ‘dress rehearsal’ for the project that involves station staff, operators, maintenance staff and drivers rehearsing the operation of the Metro Tunnel and its stations.

The team will conduct more than 100 exercises to demonstrate the project’s complex systems and technology are working as designed. Everything is rehearsed, from opening and closing each of the 5 new underground stations, to major incidents such as intruder detection and mass train and station evacuation exercises so staff are prepared for every possible scenario.

To find out more about Trial Operations, visit metrotunnel.vic.gov.au

Find out more

metrotunnel.vic.gov.au

1800 105 105 (call anytime)



For languages other than English please call (03) 9209 0147



Please contact us if you would like this information in an accessible format. If you need assistance due to a hearing or speech impairment, visit relayservice.gov.au





POOL HOUSE

COFFEE

POOLHOUSE COFFEE IS A LITTLE OASIS TUCKED BENEATH THE MELBOURNE CITY BATHS, OFFERING TASTY SANDWICHES, RICE PAPER ROLLS, PASTRIES AND A RANGE OF TREATS.

THEY ROAST THEIR OWN COFFEE BEANS INCLUDING A SEASONAL HOUSE BLEND AND SINGLE ORIGINS.

FEEL FREE TO EAT IN AND HAVE A CHAT TO THE FRIENDLY STAFF.

Mon-Thu: 7am-3pm

Fri: 7am-2pm

Weekend: Closed

6 Franklin St,
Melbourne

☎ 03 9639 6809

📷 @POOLHOUSECOFFEE

