

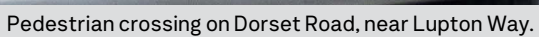
Boronia Station Upgrade

Community engagement report

May 2025

West entrance of Boronia Station.







Contents

Project overview	4
Better public spaces for Boronia's future	5
Selecting the best design	6
Gathering your feedback	8
About you	9
What we've heard	10
Aspects of the Boronia Station Upgrade that are most important to you	11
Moving around the area	12
Boronia Station precinct	12
Boronia shopping precinct	14
Look and feel	16
Landscaping	16
Ground surfaces	18
What else you told us	20
Key questions	20
Goals of the Boronia Station Upgrade	21
Next steps	22

Project overview

We're upgrading Boronia Station and building a new landscaped plaza on Dorset Road to deliver a modern and accessible precinct for the community.

Upgrading Boronia Station

A new forecourt and entrance canopies will enhance the look and feel of the station.

There will be improvements to the platform including upgrades to station furniture, shelters and toilets, as well as updates to the passenger waiting room.

Upgrading and relocating the station's ticket office and Protective Services office to the station entries will allow the station concourse to be widened, improving local access over the rail line.

The project will also deliver accessibility upgrades at the station and improvements to Lupton Way. Safety in the area will be improved with increased station lighting and additional CCTV.



Concept design of the upgraded Boronia Station and the new plaza and pedestrian crossing at Dorset Road. Artist impression, subject to change.

Better public spaces for Boronia's future

Moving between the station and Boronia's Dorset Road shopping precinct will be easier and safer than ever, with a new, landscaped plaza created to connect locals directly to an upgraded station precinct.

The new plaza will include plants, seating and lighting to revitalise the area and create an inviting public space. It will connect directly to new pedestrian traffic lights for safe and convenient travel across Dorset Road.

The Boronia Station Upgrade is being delivered by the Level Crossing Removal Project, with works set to start late this year and the project completed in 2026.



New plaza and pedestrian crossing leading directly from Dorset Road to the upgraded Boronia Station. Artist impression, subject to change.

Selecting the best design

Each transport infrastructure project has specific characteristics and constraints that help inform designs.

Some of the key considerations in the Boronia Station Upgrade planning and early design process are:



the most suitable outcomes for people with disability or mobility requirements, prams and luggage, aligning with current accessibility legislation



community safety considerations



technical considerations of how a solution could be built



minimising train and bus network disruptions to commuters



construction impacts on station precinct users and businesses



limited space in the precinct



existing ground conditions



future proofing the design



impacts to utilities, rail signalling and telecommunications services.



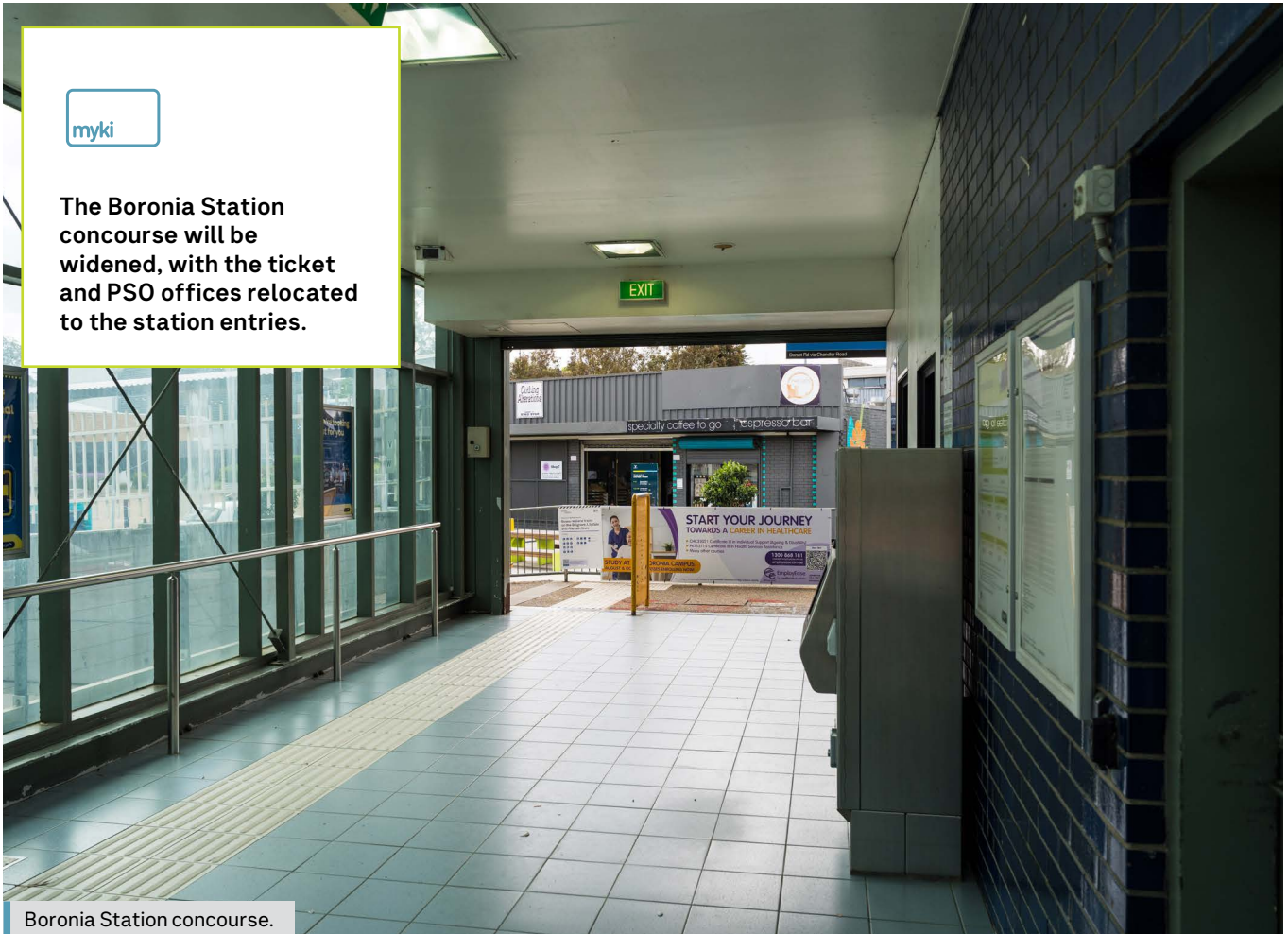
Boosting Boronia

The Boronia Station Upgrade is part of the Victorian Government's plan to revitalise Boronia and promote local growth, liveability and connectivity.

This upgrade will complement over \$5 million of projects and community grants funded and delivered in partnership with community groups and Knox City Council since 2021.



The Boronia Station concourse will be widened, with the ticket and PSO offices relocated to the station entries.



Boronia Station concourse.



The existing bars around the station will be replaced with improved screens and the ticket office will be relocated to the west (Erica Avenue side) station entry.



Boronia pocket park - west station entry.

Gathering your feedback

We asked you to view the concept designs and have your say on how you use the station precinct, what your brick surface and landscaping preferences are and how you'd like to hear from us.

We shared the concept designs on Friday 15 November 2024 and invited feedback for a community engagement period until Sunday 15 December 2024 through digital and in-person promotion and newsletter distribution.

Your feedback reflected in this report was collected through an online survey on the Engage Victoria website. Printed surveys with a reply paid envelope were available by request.

We also invited the community to ask questions on our Engage Victoria

project page, at our online information session and at in-person pop ups at Boronia Station, Boronia Mall and Boronia Plaza. The feedback we received helps us understand what's important to the community.

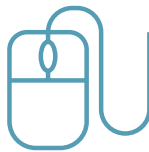
Your feedback

There was a high level of community interest in the project during the engagement period. Here's a summary of what we saw:

172



survey responses received



2,595

people visited our
Engage Victoria
project page



20

people attended
our online webinar



385

locals spoke with
us at pop ups

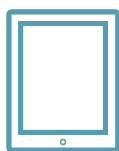


73

questions asked
on Engage Victoria

20,200

people saw our social media
content about the concept designs



500

people liked or
commented on the posts



20,000

newsletters sent to local
households and businesses

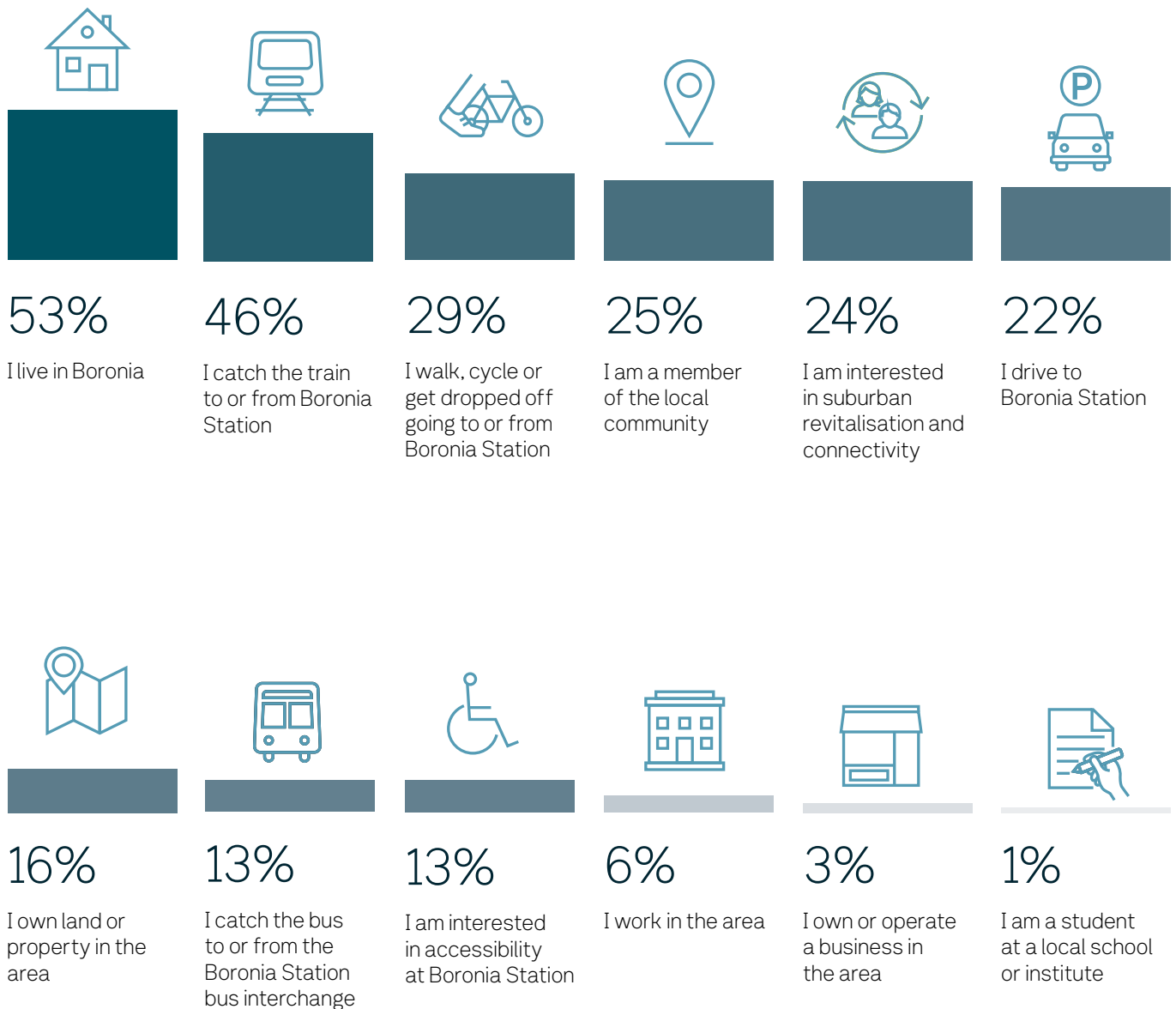
3,846

visits to the project page on
Victoria's Big Build website



About you

When we asked why you are interested in the Boronia Station Upgrade, you told us:



About the data

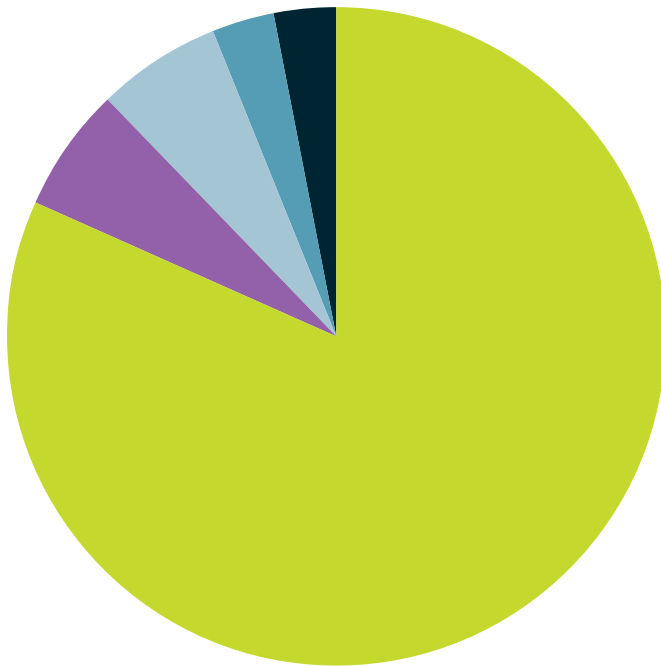
Data in this report comes from the 172 responses to the community survey.

Note that some survey questions had multi-select response options. In these cases, percentages total more than 100%. Other questions required a single response. In these cases, questions may be slightly above or below 100% due to rounding.

Note that no questions were mandatory to answer.

What we've heard

Where you live – by Local Government Area



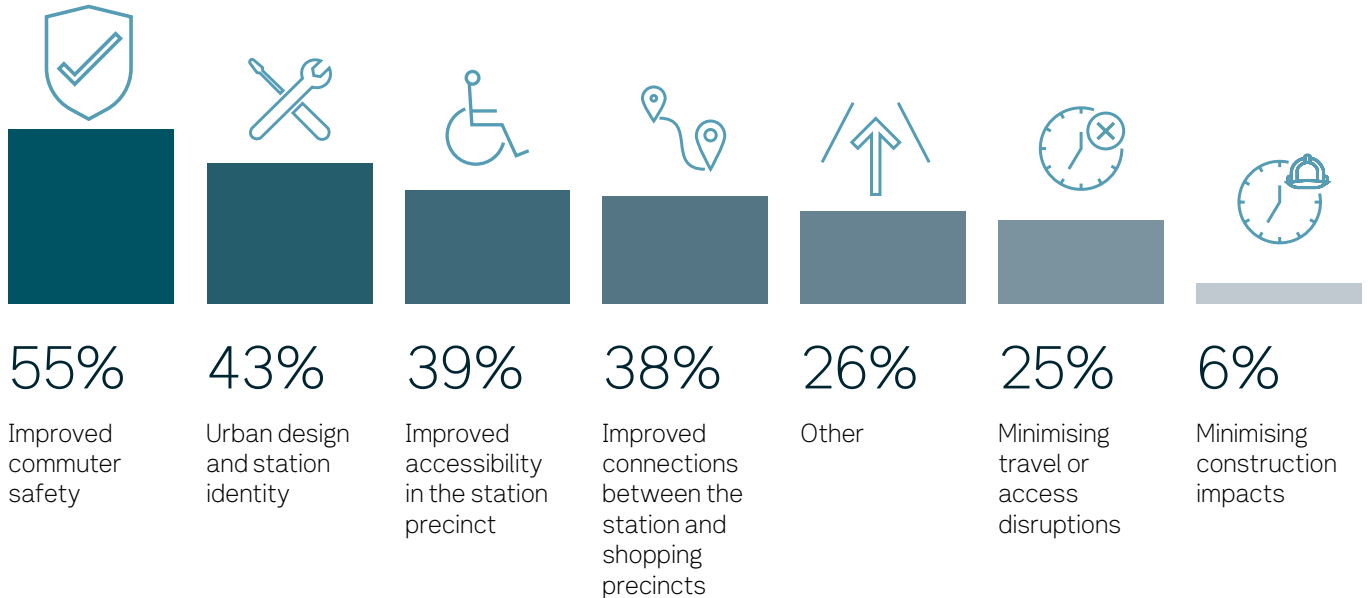
- City of Knox
- City of Maroondah
- City of Whitehorse
- Shire of Yarra Ranges
- Other, including City of Glen Eira, City of Darebin, City of Yarra, City of Monash, Shire of Mornington, Kingston, Boroondara, Bayside, Nillumbik, Wyndham



Pedestrian crossing on Dorset Road, near Lupton Way.

Aspects of the Boronia Station Upgrade that are most important to you

We asked you to select your top three areas of importance.



Some respondents who selected 'Other' as an option said:

- 'Improved cycling connections along the Ringwood to Belgrave Rail Trail'
- 'More parking'
- 'Train time visibility from outside the platforms'
- 'Safe, physically separated cycle tracks'
- 'Integrating the station into the wider suburb'.

Of those who selected 'Other', just under half mentioned improved cycling connections in their comment. You can read more about cycling connections on page 20 of this report.

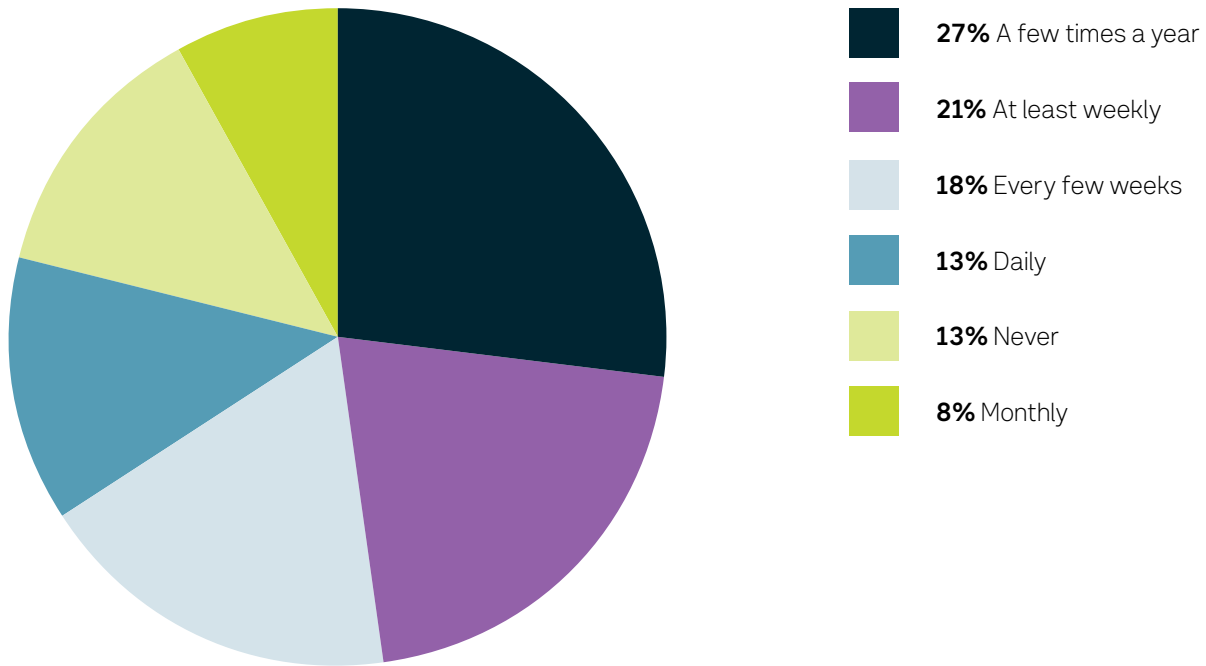


Boronia Station entrance from Lupton Way.

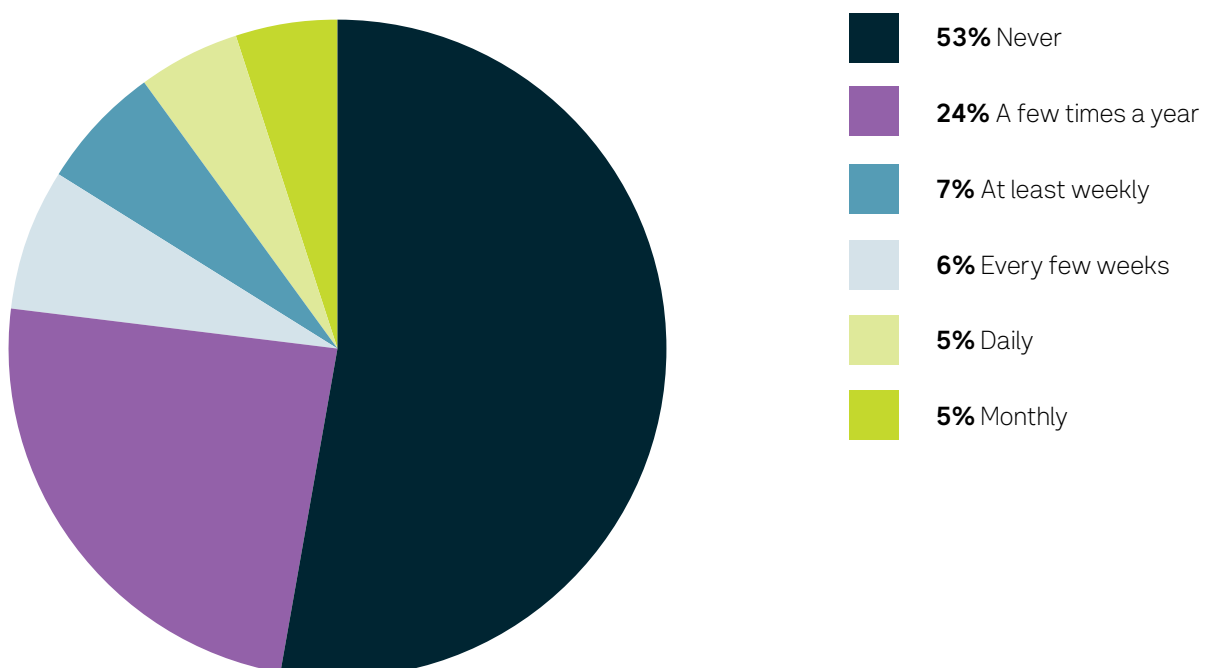
Moving around the area

Boronia Station precinct

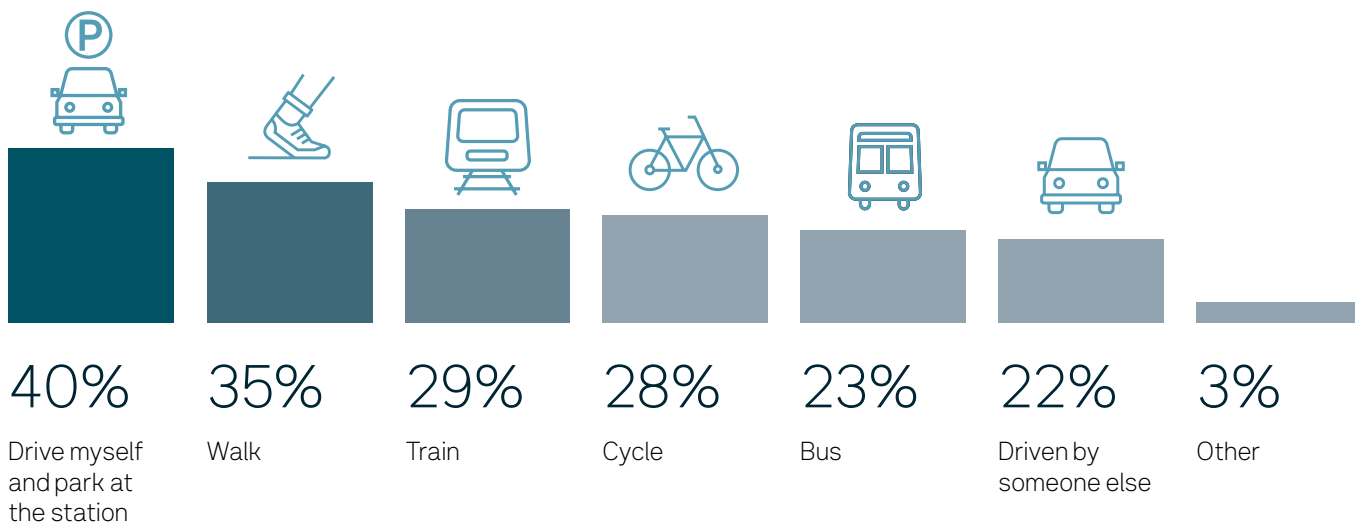
We asked you how often you catch the train to or from Boronia Station.



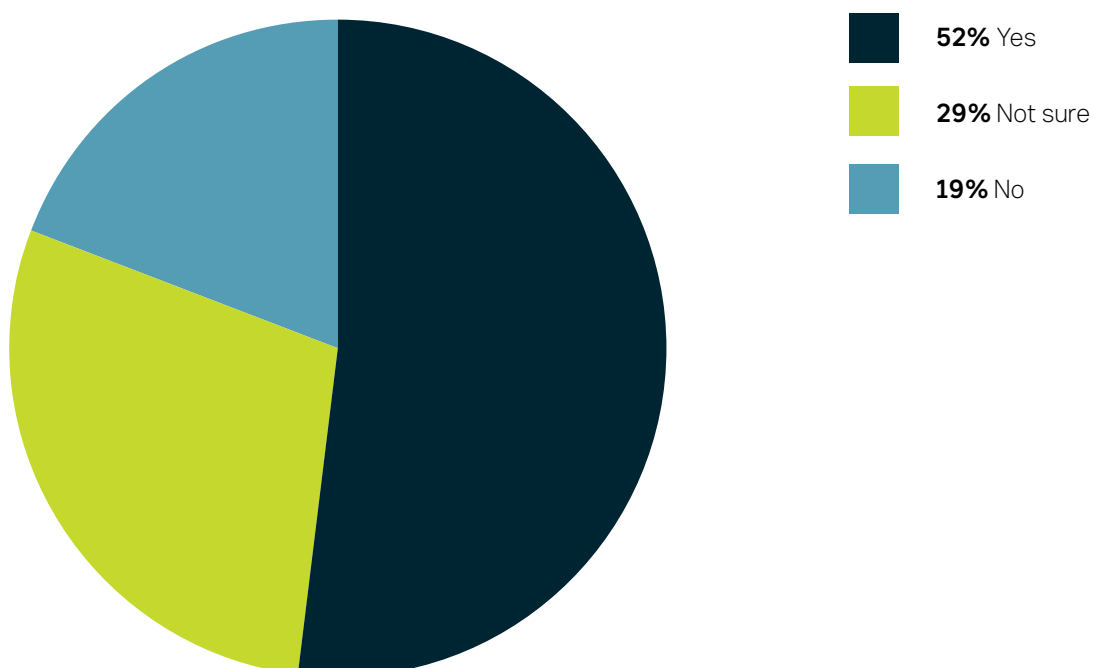
We asked you how often you catch the bus to or from Boronia Station.



We asked you about how you travel when going to Boronia Station.



We also asked whether you would be more likely to use Boronia Station after the upgrade.

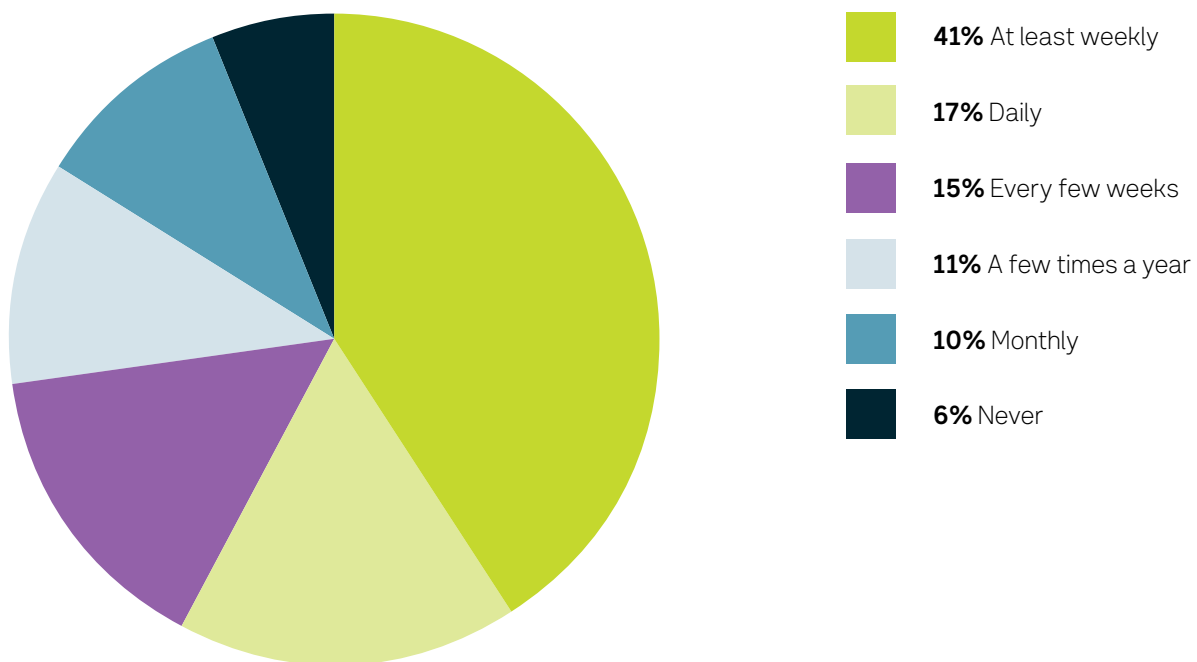


Dorset Road shopping precinct - Boronia Station side.



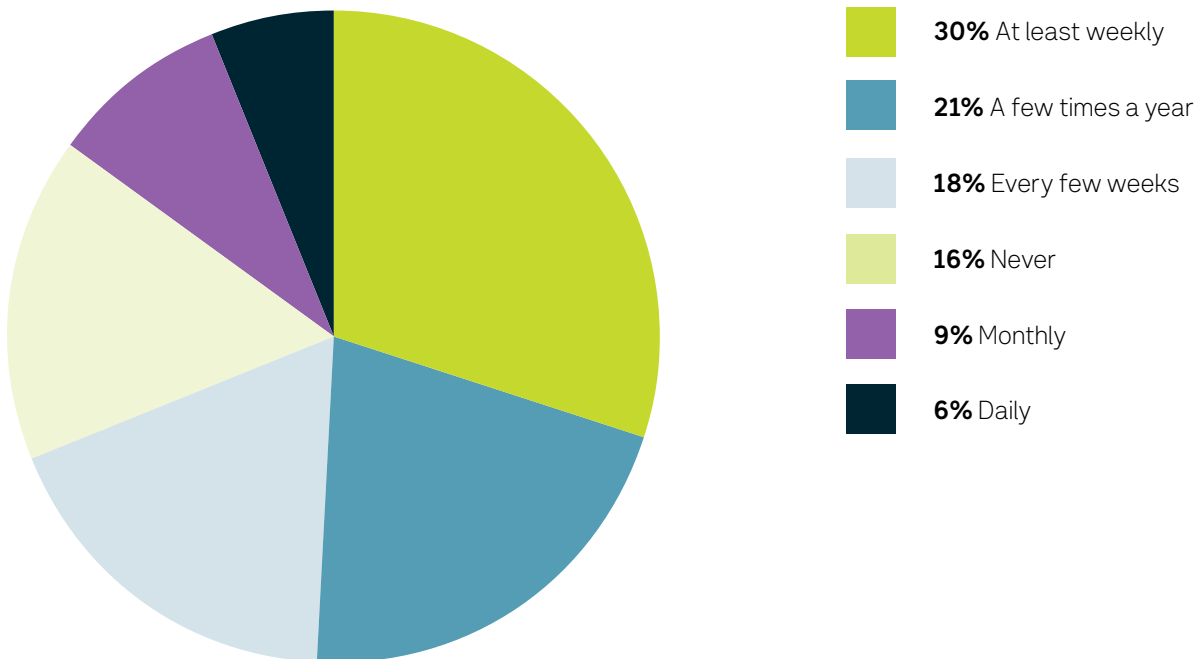
Boronia shopping precinct

We asked how often you use facilities and shops on or near Dorset Road.





We asked how often you travel between the Boronia Mall/Dorset Square shopping precinct and Boronia Station.



Look and feel

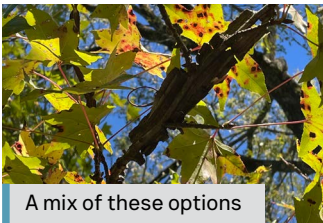
Landscaping

We asked you to tell us what types of trees you would like to see in the station precinct or plaza.

Out of the four examples of native and exotic trees, most people preferred a mix.

Here are the options ranked in order of preference:

1



A mix of these options



2



Blackwood wattle

3



Man fern

4



Sweetgum

5



Black she-oak

We asked you to tell us what types of low-lying plants you'd like to see planted around the station.

Out of the four examples, most people preferred a mix of all the options.

Here are the options ranked in order of preference:



Ground surfaces

We asked you to tell us what brick pavement option you would like us to include in the area.

Out of the two options, most people preferred the earthy brick option.





Lupton Way will be realigned to accommodate the new station entry and canopy. The upgraded station will include a fully accessible ramp, pedestrian crossing and pick up and drop off zone.

Lupton Way, Boronia.



Pocket park near Woolworths Boronia Junction.



Improvements to the pocket park near Woolworths Boronia Junction will create more usable open and green space.

What else you told us

The Boronia Station Upgrade project specifically aims to improve accessibility, safety and the look and feel of the station and immediate precinct. This will be done by widening the station concourse, building the new plaza to Dorset Road and improving station buildings, the platform and facilities.

The community survey informed us on:

- what's important to you about the project
- how you use the station precinct
- your ground surface and landscaping preferences
- how you'd like to hear from us.

To help us understand what's important to you in more detail, we also invited you to share any additional thoughts or feedback you have about the project. Many of the responses were about items outside the scope and funding for the Boronia Station Upgrade.

All of your feedback, however, has been captured and sent to the project team and where relevant, our partners at the Department of Transport and Planning and Metro Trains Melbourne.

Key questions

Some of you asked why the design does not include a deck over the rail trench.

The concept designs use the existing cross corridor connection at Boronia Station to create a cohesive link from west of the rail line to the Dorset Road shopping precinct.

As part of this, relocating and upgrading the station's ticket office and Protective Services office to the station entries will allow the station concourse to be widened, improving local access over the rail line.

Building a deck over the rail trench would not provide the same precinct revitalisation benefits as the current plaza and widened concourse designs.

Early investigations explored a deck option to cover the rail trench. Further detailed design work identified several design limitations including safety, functionality and constructability.

A deck design would lack the landscaped, accessible connection to Dorset Road and the broader shopping precinct as well as the safety and amenity enhancements included in the concept designs.

Additionally, the existing rail alignment and infrastructure limit the amount of usable community space that the deck would create. These constraints also mean that construction would be

significantly more disruptive to the rail network and local community.

The widened concourse and plaza design is a better community outcome that will provide the benefits of improved safety and accessibility, as well as better alignment with local and state government plans to revitalise and connect the broader area.

You also asked if we are building a cycling connection.

You told us that you would like the designs to include a continuous, two-way cycling option throughout the precinct, connecting to the Ringwood to Belgrave Rail Trail. Many people suggested options for a bike lane, separated bike path or a shared pedestrian, cyclist and car zone on Lupton Way or through car parks.

Project goals and site constraints

We investigate each site for ways to improve amenity and connectivity within the project area that align with project objectives and meet safety and stakeholder requirements.

Options for upgrading the cycling connection were explored during project development. Upon investigation, the extensive constraints caused by limited space available on Lupton Way meant this was not included in the project design.

Next steps for cycling connectivity

The design is future-proofed, meaning it will not cause changes to the area that preclude a future cycling alternative. Cyclists will be able to continue travelling in the current arrangement.

We recognise that this is an important issue for the community and feedback will be shared with authorities who may be able to deliver an alternative connection.

The primary goals of the Boronia Station Upgrade are



refresh the station and nearby precinct



improve accessibility for people with disability and those who have additional mobility requirements



improve and modernise existing station facilities



enhance safety with more CCTV, lighting and passive surveillance



better integrate the station with the Dorset Road shopping precinct



boost the station's identity as a key place in Boronia and improve visibility from Dorset Road.

Other frequently mentioned themes and ideas



Station facilities and look and feel

You told us you agree that upgrades to the station are important. These upgrades include fresh paint, platform shelter and improvements to platform facilities, including the waiting room and bathrooms. Some of you stated you would like to see additional upgrades at the station, such as passenger information displays on the concourse to see upcoming train services before going down to the platform.



Improved community spaces

Some of you asked for extra seating and more greenery in the area, as well as improved integration of the space with nearby businesses.



Accessibility upgrades

Many of you said you would like to see a more accessible precinct with improved usability. Suggestions included improved ramps and paths, the installation of a hearing loop and additional lifts.



Safety in and around the station

You told us that improving safety in and around the station is important to you. This includes increased CCTV, better lighting and clearer sight lines. Some of you also requested a greater security presence, whether police or Protective Services Officers (PSOs).



Parking around the station

Some people commented that there should be more parking and others suggested that parking be consolidated into a multi-deck car park to use space in other ways.



Other station, precinct and service improvements

We received a broad range of other feedback regarding aspects of the station and precinct. This included requests for additional and improved parking, additional waiting rooms, escalators, more bus and train services, improved bus shelters, more myki machines and readers and improved cleanliness at the station.

Next steps

Thank you to everyone who provided feedback.

Your feedback will help inform aspects of the final designs for the project, which will be released later this year.

When the final designs are released, you will have the opportunity to ask questions and chat to the project team.



Widened Boronia Station concourse and new landscaped plaza leading to Dorset Road. Artist impression, subject to change.

We look forward to working with you as the project progresses.



Project timeline



2023

- Project announced
- Site investigations



2024

- Site investigations continue
- Concept designs released



2025

- Final designs released
- Site investigations continue
- Works begin



2026

- Works continue
- Upgraded station open
- New plaza open
- Finishing and landscaping works

** Timeline subject to change.*



Stay up to date

Be the first to know about updates on the Boronia Station Upgrade.

Sign up for email updates at levelcrossings.vic.gov.au/subscribe

Find the latest information about the project at levelcrossings.vic.gov.au/boronia-station

levelcrossings.vic.gov.au

contact@levelcrossings.vic.gov.au



For languages other than
English, please call 9209 0147.

1800 105 105 (call anytime)



Please contact us if you would like this information in an
accessible format. If you need assistance due to a hearing
or speech impairment, visit [relayservice.gov.au](https://www.relayservice.gov.au)

