



Artist's impression of Eram Park and bridge, Box Hill North

Eastern Freeway Upgrades – Tram Road to Springvale Road

Design Update: Urban Design and Landscape Plan
September 2025



We're upgrading the Eastern Freeway with new express lanes, new Eastern Busway, smart technology and a connection to North East Link – slashing travel times and improving travel in Melbourne's east.

From Tram Road to Springvale Road we'll ease bottlenecks, upgrade every entry ramp, and install a new Intelligent Transport System. We'll also upgrade Koonung Creek Trail, improve bridges and underpasses and return improved open spaces.

Before we get major construction for this section of the Eastern Freeway Upgrades underway, we're exhibiting an Urban Design and Landscape Plan

(UDLP) to ask the local community what they think of the look and feel of what's planned for their local area.

When complete, the Eastern Freeway Upgrades will connect seamlessly with the new 6.5 kilometre North East Link – linking Melbourne's east with the M80 Ring Road, slashing travel times by 35 minutes and taking 15,000 trucks off local roads a day.



1.6km of new and upgraded walking and cycling paths



2 new walking and cycling bridges



2,000+ new trees



1 million+ new plants and grasses



3.5km of new noise walls

Sign up for updates
bigbuild.vic.gov.au/roads-subscribe





Artist's impression of Koonung Creek bridge to Eram Park, Box Hill North

In response to community feedback received through the Project's Environment Effects Statement (EES), the Urban Design and Landscape Plan includes design improvements to enhance walking and cycling connections, return improved open spaces and reduce construction disruption.

Easing the bottleneck between Tram Road and Middleborough Road



We've improved the lane layout and made this section of the freeway easier to use. New entry and exit ramps and dedicated lanes for local trips, through trips and express trips will separate traffic to ease congestion and improve traffic flow.

Better access to Eram Park



Two new bridges at Eram Road and Koonung Creek will improve walking and cycling connections to Eram Park, Koonung Creek Trail and surrounding pathways.

In response to community feedback, the existing bridge at Eram Road will remain open for people to use while we build the new bridge.



Artist's impression of Cabena Street bridge, Nunawading

Improved entries to Koonung Creek Trail



New landscaped 'navigation nodes' at bridge entries with seats and new trees and plants will provide places to stop, meet and rest. Improved signage will also make it easier for people to find their way.

Where Koonung Creek Trail connects to Tram, Middleborough, Surrey and Springvale roads, new trees and plants will make these entry points more welcoming.

Upgraded Koonung Creek Trail and underpasses

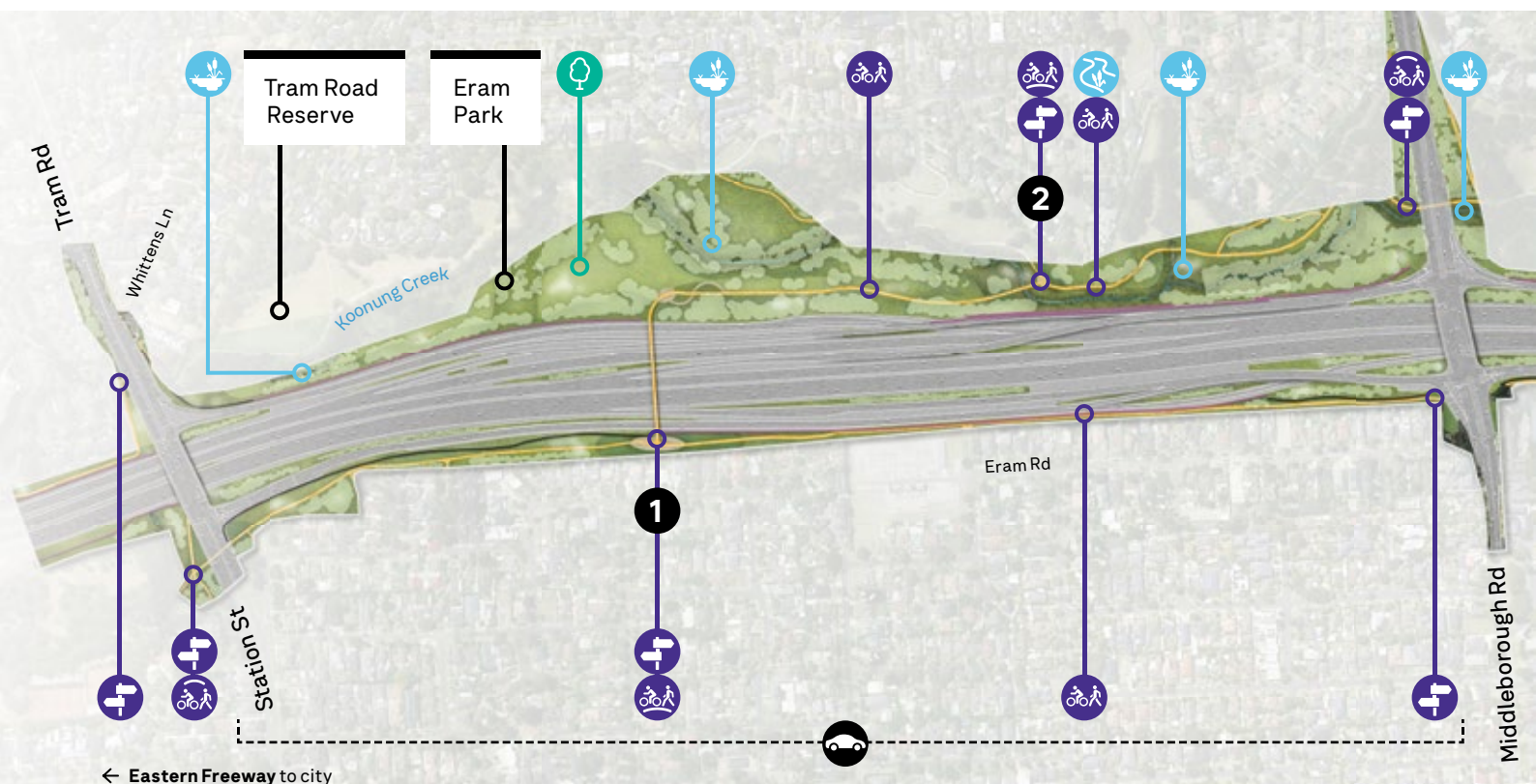


The existing Koonung Creek Trail underpasses at Station Street and Wetherby, Blackburn, and Springvale roads will be upgraded with better surface treatments, landscaping, planting and lighting to make them more enjoyable and safer to use.

More than 1.6 kilometres of Koonung Creek Trail will also be upgraded with improved surfaces and new trees and plants.



Artist's impression of Eram Road bridge, Box Hill North



← Eastern Freeway to city



Artist's impression of Cabena Street bridge, Nunawading

Koonung Road and Cabena Street bridge improvements



We're lowering the freeway so the existing bridges at Koonung Road and Cabena Street can be kept instead of demolished and replaced. This will keep existing trees, reduce construction disruption and preserve these two architecturally significant landmarks.

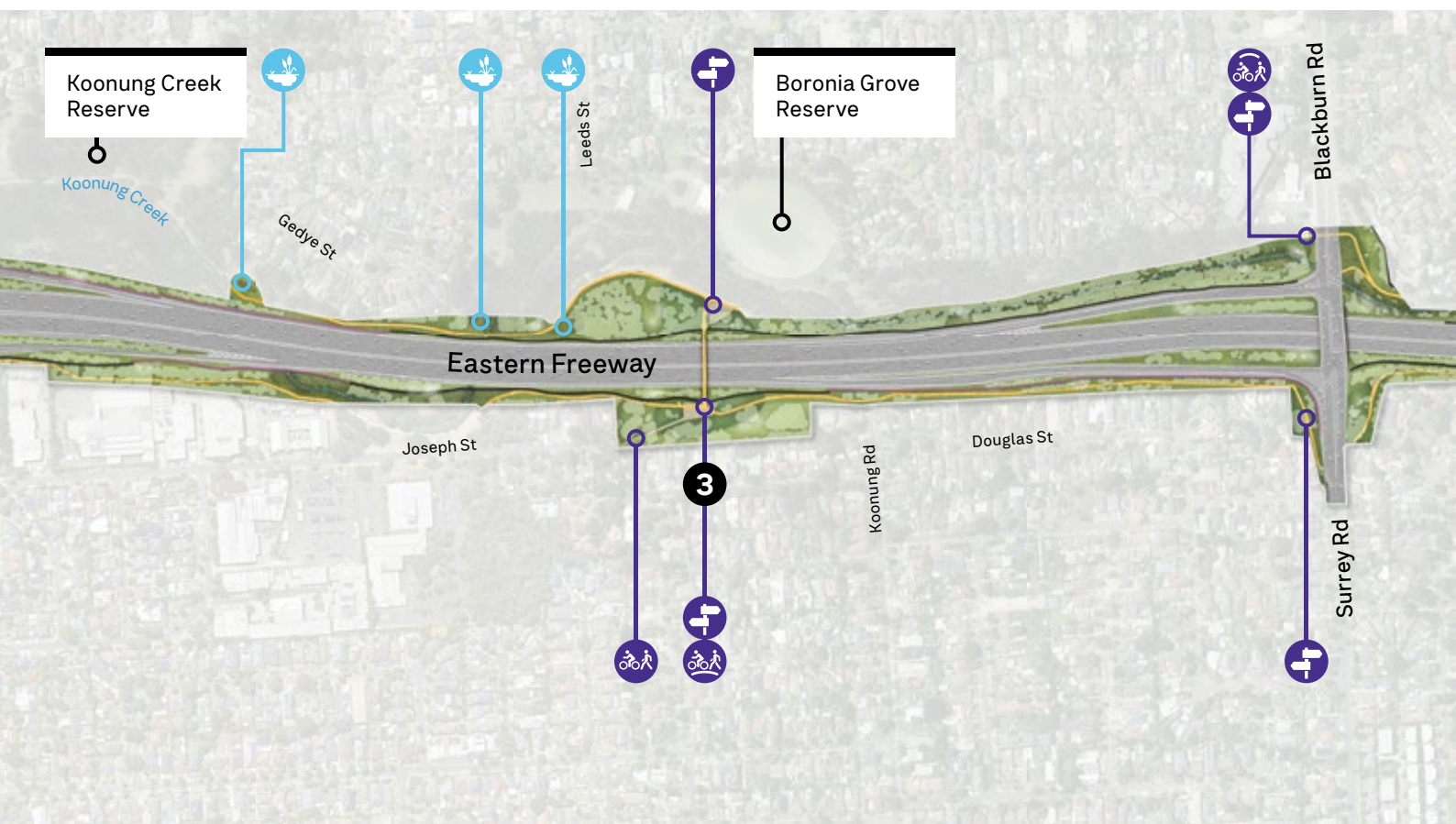
A new set of stairs on the south side of the Cabena Street bridge, and a new path on the south side of the Koonung Road bridge will provide better connections to Koonung Creek Trail for pedestrians and cyclists.

Eram Park improvements



Areas of Eram Park needed to support construction will be returned with open lawns and improvements including more trees and plants and better access to green spaces from Eram Road bridge and Koonung Creek Trail.

In response to community feedback, we've reduced the width of the freeway upgrades here to return more space back to the community compared to the EES design.



Koonung Creek enhancement



Additional trees, shrubs and grasses along Koonung Creek between Eram Park and Junction Road Reserve will enhance existing sections of the creek.

A 150-metre section of Koonung Creek in Eram Park will also be moved away from construction areas and landscaped with new trees, plants and natural rock edges. The location for the creek has been improved from the EES design for more natural light, space for trees and plants, and a better connection with Koonung Creek Trail. Moving the creek here also avoids this section needing to run under the freeway.



Artist's impression of Koonung Road bridge, Blackburn North

Junction Road Reserve open space returned

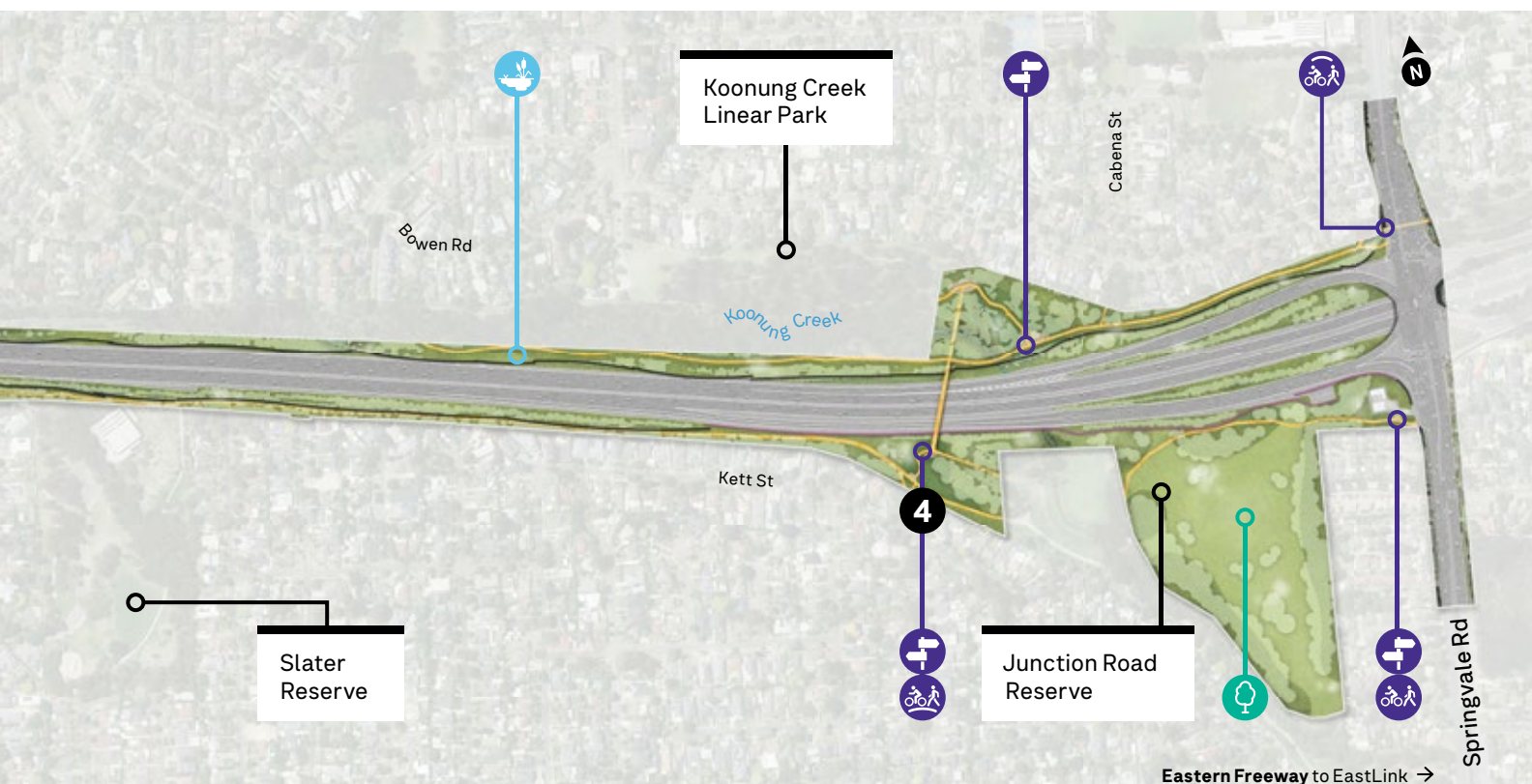


Junction Road Reserve will be needed to support construction and will be returned with new open grassed areas, more trees and plants, and a better connection to Koonung Creek Trail at Springvale Road.



Artist's impression of Junction Road Reserve, Nunawading

- | | | | |
|------------------------|---------------------|---------------------------|---------------------|
| 1 Eram Road bridge | Koonung Creek Trail | Open space improvements | New/Upgraded path |
| 2 Koonung Creek bridge | Koonung Creek | New creek bed | New/Upgraded bridge |
| 3 Koonung Road bridge | New noise wall | Additional creek planting | Upgraded underpass |
| 4 Cabena Street bridge | Existing noise wall | | Navigation node |





Artist's impression of new noise walls near Blackburn Road, Blackburn North

Designed to meet Victoria's toughest traffic noise standard

The upgraded Eastern Freeway, North East Link and M80 Ring Road Completion are being designed and built to meet a stringent noise standard of 63 decibels during the day. This is consistent with the highest level of traffic noise protection in Victoria.

In response to community feedback, we'll also meet a quieter standard of 58 decibels at night – a first for a road project in Victoria.

For the Eastern Freeway Upgrades from Tram Road to Springvale Road, the noise standard will be met using a range of measures including noise-reducing asphalt to manage noise at the source and building 3.5 kilometres of new noise walls.

Where possible the existing, high-quality concrete noise walls will be kept to avoid construction disruption and keep existing trees.

Where new noise walls are needed, they will be between six and 10 metres tall. Colours are drawn from the local environment using a natural palette of earthy soil, clay and stone. Materials include a mix of recycled plastic panels

moulded using textures and patterns to complement the existing concrete walls, and semi-transparent acrylic panels where natural light is needed.

Recycled plastic is a dense material with excellent sound absorption qualities and makes the project more sustainable. It also means new noise walls are lighter, so they can be installed more easily, with less heavy machinery and less disruption.

Tree planting program

To build the new freeway lanes, noise walls, walking and cycling bridges and upgrade entry and exit ramps, trees will need to be removed where we're working.

For every tree removed, at least two will be planted, including extensive planting to reinstate Eram Park and Junction Road Reserve and to filter views of noise walls.

We've also started planting trees early in local places nearby including parks, reserves and schools.



Artist's impression of new planting at Eram Park, Box Hill North



Artist's impression of new freeway lanes and Eram Park improvements, Box Hill North

Upgrading the Eastern Freeway

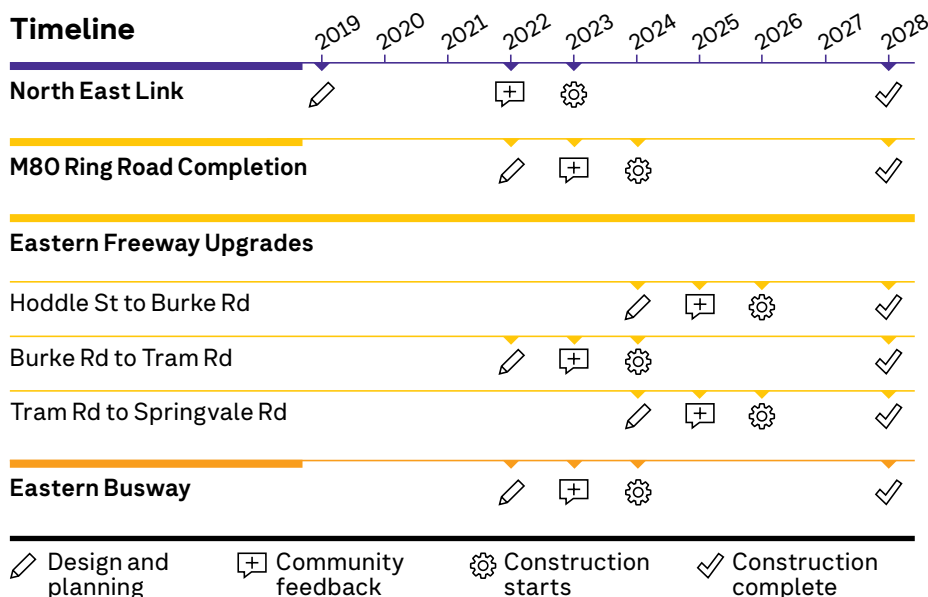
The Eastern Freeway Upgrades are being delivered in stages and timed to open around the same time as North East Link and the connecting M80 Ring Road Completion.

Work to build the first stage of the upgrades from Burke Road to Tram Road, including the connection to North East Link, is underway now.

While we're further refining the design from Tram Road to Springvale Road this year through the UDLP, you'll see us out and about getting ready for major works to begin in 2026.

A UDLP for the upgrades from Hoddle Street to Burke Road will be exhibited for comment later this year.

Timeline



Returning improved public spaces after construction

To build the Eastern Freeway Upgrades from Tram Road to Springvale Road, construction compounds are required at Eram Park and Junction Road Reserve.

When construction is finished, we will be returning these areas as spaces people can use similar to how they do now with open grassed areas and improvements including more trees and plants and upgraded walking and cycling connections.



To stay up to date on works in your area, sign up for e-updates at bigbuild.vic.gov.au/roads-subscribe



Artist's impression of Koonung Road bridge, Blackburn North

Have your say

Urban Design and Landscape Plan

Comment on the Urban Design and Landscape Plan

The UDLP for the Eastern Freeway Upgrades from Tram Road to Springvale Road is on exhibition now.

The UDLP has maps and drawings of the project design and an explanation of how it meets strict requirements the community helped develop through the Environment Effects Statement (EES) process.

Making a submission is your opportunity to help refine local design elements for your area including reinstated parklands, new and upgraded walking and cycling paths and bridges, and designs for new noise walls.

We'll be using what we hear to finalise the UDLP before submitting

it to the Minister for Planning for approval and getting major construction underway.

Where to see the plan

You can see a copy of the UDLP online from 1 to 28 September 2025 at engage.vic.gov.au/bigbuild

You can also visit an information display and talk with our team, or see the UDLP at local libraries throughout the exhibition period.

How to make a submission

Make your submission online at engage.vic.gov.au/bigbuild by 28 September 2025.

If you need help accessing the UDLP, or to make a submission, please contact us on 1800 105 105 or at contact@bigbuild.vic.gov.au



Sunday
28 September 2025

Key dates



2017 Strategic planning

Community feedback helped understand existing traffic and transport issues and opportunities



2018-2019 Environment Effects Statement

Community feedback helped set requirements for the project design



2025 Urban Design and Landscape Plan

Community feedback will help further refine the project design ready for construction



2026 Major construction starts

We'll be keeping you updated as works progress

bigbuild.vic.gov.au/roads

contact@bigbuild.vic.gov.au



1800 105 105 (call anytime)



For languages other than English please call 9209 0147

Please contact us if you would like this information in an accessible format.

If you need assistance due to a hearing or speech impairment, please visit relayservice.gov.au