

Construction of the new road underpass west of the rail line



Webster Street, Dandenong, May 2026

New road opening this spring



Dandenong's new road underpass connecting Princes Highway-Lonsdale Street to Cheltenham and Hammond roads opens this spring – two years ahead of schedule.

In the coming months, we'll share more information about when the new road underpass will open and changes to how you'll travel around Dandenong.

When the new road underpass opens, you'll be able to travel straight from Hammond and Cheltenham roads in the west to a brand-new signalised intersection on Princes Highway–Lonsdale Street in the east.

The new road underpass will help reduce congestion, create a more reliable road network, and support Dandenong's future growth.

Over the coming months we'll continue planting 30,000 native trees, shrubs and flowering plants throughout Dandenong.

Construction is progressing strongly with excavators breaking through under the rail line in from west to east.

As part of the Big Dig, we've removed more than 38,000 tonnes of soil, with excavation progressing on the eastern side after successfully relocating one of Melbourne's major gas pipelines.

This pipeline relocation began in September and could only be completed during the warmer months due to its critical role in Melbourne's gas network.

During last year's October construction blitz, we removed the Webster Street boom gates, making the Cranbourne and Pakenham lines boom gate free with trains running through the Metro Tunnel.

We also built the foundations for the new rail bridge over the underpass and opened a new walking and cycling path under the Dandenong Creek rail bridge. This safe, convenient route links directly to the Dandenong Creek Trail.

Project benefits



Boom gates gone at Webster Street eliminating more than an hour of down time in the morning peak (7am to 9am) saving travel time for 10,000 vehicles



Improves safety, reduces congestion and creates a more reliable road network



Reroutes traffic away from Dandenong's CBD



Keeps heavy vehicles off Webster Street



Prepares the area for future development



Sign up for updates
levelcrossings.vic.gov.au



Digging deep to build your new road

We're powering ahead with excavation on the eastern side of the rail line.

We've completed the last of 403 piles that will support the walls of the new road underpass.

In March excavators broke through under the rail line, an exciting milestone in the Big Dig.

Approximately 13 Olympic sized swimming pools of soil are being excavated, with more than 38,000 tonnes already removed.

As we're working close to the Dandenong Creek, we're using specialised equipment to safely remove groundwater and keep the site dry while we dig.

Once excavation is done, we'll build the underpass base slab, apply waterproofing to the walls and floor, and install a new drainage system that pumps water into a detention basin where it's naturally filtered before flowing to Dandenong Creek.

With waterproofing complete, architectural walls inspired by Dandenong's vibrant colours will be installed, followed by road surfacing, line marking, lighting and safety barriers.

The new underpass will link to Cheltenham and Hammond roads on the west side of the rail line, and to a new signalised intersection at Princes Highway-Lonsdale Street on the east side.



Recycling in action

Excavated soil is being donated to a quarry rehabilitation project in Harkaway, and cement-based materials, such as piling pads, are sent to our recycling partners for reuse.

The new underpass will open in spring this year – two years ahead of schedule.



Excavation of the underpass walls



Excavation breakthrough beneath the rail line



Underpass excavation next to the rail line

2026 progress in pictures

February



Steel braces in place to stabilise the retaining walls of the underpass

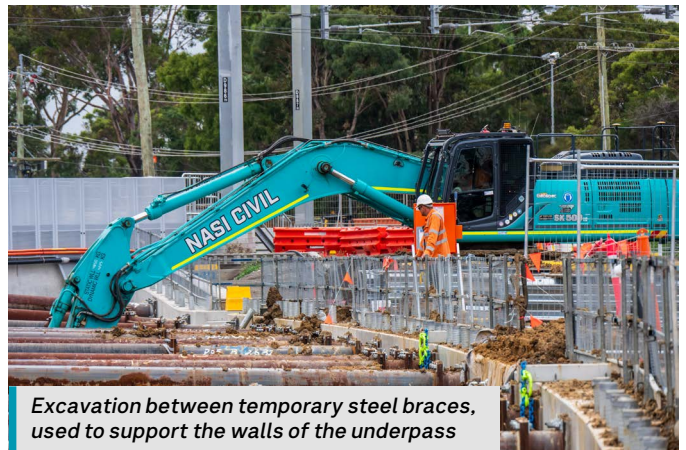


Excavated soil from the underpass being loaded into trucks

March



Construction of the centre median on the western side of the underpass



Excavation between temporary steel braces, used to support the walls of the underpass


April



Western end of the underpass, looking towards Princes Highway-Lonsdale Street



Concrete pour for the base of the western end of the underpass, looking towards Cheltenham Road



66%
Underpass excavation completed



Behind the barriers

Check out what's happening behind the barriers by viewing our image galleries online.

Scan the QR code or visit levelcrossings.vic.gov.au/webster-galleries

Your new road underpass opens in spring

Big changes are coming to Dandenong. When the new road underpass opens this spring, you'll be able to travel straight from Cheltenham and Hammond roads in the west to a brand-new signalised intersection on Princes Highway–Lonsdale Street in the east.

The new underpass creates a direct east-west connection for vehicles of all sizes, helping move trucks and heavy vehicles off local streets and out of Dandenong's CBD. At the new intersection on Princes Highway–Lonsdale Street, drivers will be able to turn left or right with no peak-hour turning restrictions.

The road will feature two lanes in each direction, with a 5.4 metre clearance under the rail bridge, making travel smoother and more reliable for everyone.

Changes to the way you travel

In the coming months, we'll share more information about key dates and how you'll travel around the area when the new road underpass opens.

While we continue building the new road underpass there are changes to the way you travel through Dandenong.

For more information, scan the QR code or visit levelcrossings.vic.gov.au/webster-travel-changes



*Looking west towards the new road underpass.
Artist's impression – subject to change*

Dandenong's new road names

Two remarkable community leaders, Pat Dow and Merle Mitchell AM, have inspired the proposed new road names Dow Court and Merle Parade.

With Webster Street closed at the rail line and the Cranbourne and Pakenham lines boom gate free, the section of Webster Street between the rail line and Princes Highway-Lonsdale Street is proposed to be renamed Dow Court in honour of Pat Dow.

When the new road underpass opens, the section of Cheltenham Road between Foster Street and Hammond

Road will become left-out only into the new underpass. This section of Cheltenham Road is proposed to be renamed Merle Parade, honouring Merle Mitchell AM.

Together, the proposed names recognise two extraordinary women whose dedication shaped the City of Greater Dandenong.

We're working with Greater Dandenong City Council, the Department of Transport and Planning and Geographic Names Victoria to finalise both road names.

As part of the project, the new underpass will be named Cheltenham Road and we're building a new Thomas Street connection to Lonsdale Street-Service Road.



Pat Dow

Pat was a true Dandenong advocate, dedicating more than 30 years to volunteering with groups including the Dandenong Hospital Auxiliary, Red Cross and Meals on Wheels.

She was also a huge supporter of the Dandenong Festival of Music and Art for Youth and helped lead a decade long fundraising effort to build the 12th Dandenong Scout Hall.

Merle Mitchell AM

Merle was a nationally recognised advocate for social justice, serving as CEO of the Australian Council of Social Service, supporting the Council of the Ageing, and founding the Springvale Community Aid and Advice Bureau (SCAAB).

For over 20 years through her work with SCAAB, Merle was an active part of the Springvale humanitarian effort to provide accommodation and settlement services to more than 30,000 migrants and refugees from all over the world.



Visit the new and expanded Marmara

A staple of the Dandenong community, Marmara is focused on providing the best quality produce at the lowest prices.

Now open at their new, bigger store at 20 Hallam Valley Road with more parking, space, and variety than ever before, pay them a visit and see for yourself what makes Marmara special.

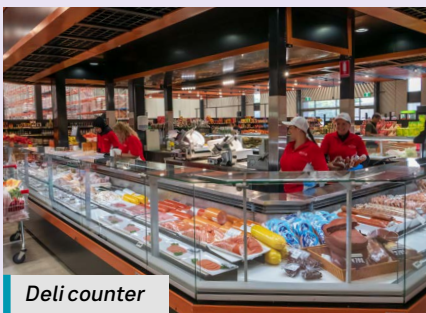
Proudly family owned and run, Marmara started as a small store and grew with the Dandenong community, becoming a household name for fresh and long-life produce.

For Marmara, community is at the heart of everything they do. From greeting regulars like family to taking the time and care to ensure everyone can find something from their home country, they know it takes more than good food to make something truly special.

Boasting a wide variety of meats, seafood, fresh fruit and vegetables, herbs, cheeses and premium deli favourites to name but a few, Marmara is a dream for those who love to cook and want to cook with the finest ingredients. Stocking only the freshest and best produce and every aisle stacked with quality you can taste, their selection is guaranteed to turn the head of even the most discerning cook.

Marmara Halal Meats
20 Hallam Valley Road, Dandenong
03 9708 5455
Open 7am to 7pm

[f marmarahalalmeats](#)
[@ marmara.halal.meats](#)



Project timeline

- 2018**
 - Project announced
- 2020-late 2023**
 - Site investigations, traffic surveys and planning works
- 2023**
 - Concept designs released
 - Community consultation
 - Site investigations continue
- Late 2024**
 - Final designs released
 - Early works
- 2025**
 - Construction starts
 - Walking and cycling path under the rail line opens
 - Boom gates gone for good
 - Webster Street closed at the level crossing
- 2026**
 - Construction
 - New road underpass opens in spring
 - Landscaping
- 2027**
 - Project complete

* Timeline subject to change.



Contact us

For more information call **1800 105 105** or email contact@levelcrossings.vic.gov.au anytime.

levelcrossings.vic.gov.au

levelcrossings@bigbuild.vic.gov.au



For languages other than English, please call 9209 0147.

1800 105 105 (call anytime) [@](#) [f](#) [v](#) [X](#) [in](#)

Please contact us if you would like this information in an accessible format. If you need assistance due to a hearing or speech impairment, visit relayservice.gov.au

