



## DOMAIN COMMUNITY REFERENCE GROUP

### Meeting #19

Wednesday 27 November, Seasons Botanic Gardens

# A LOOK BACK AT 2019



Over 13 days:

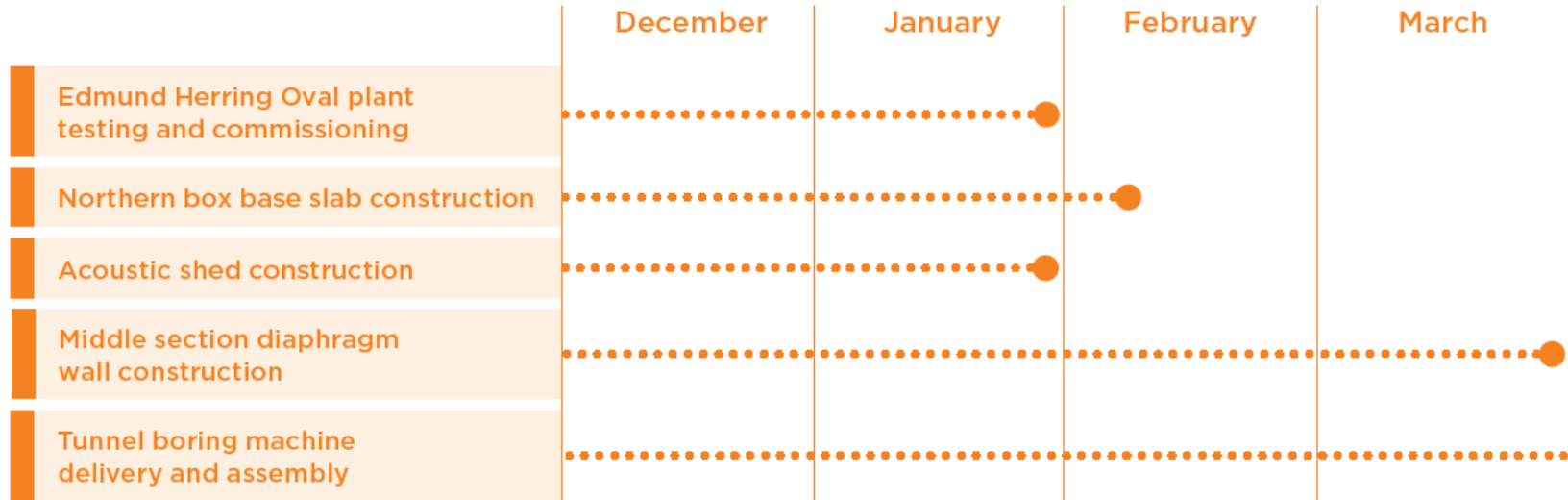
- 1,390 metres of new tram tracks laid
- 3,400 tonnes of new asphalt laid
- 7,500 cubic metres of ground excavated
- 1,415 cubic metres of concrete poured
- 10,500 tonnes of crushed rock used
- 7,000 cubic metres of concrete and asphalt demolished



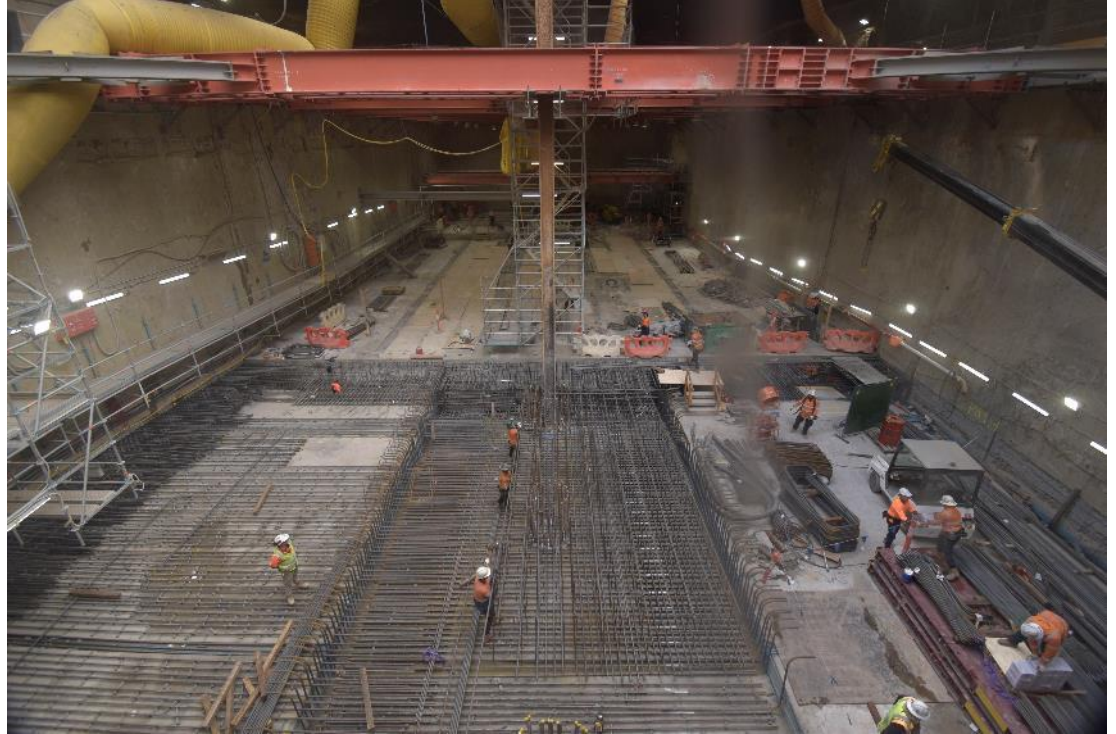


# WORKS UPDATE

## Look ahead for 2019/20



- Excavation through the void
- Base slab construction  
(Steel fixing and concreting)
- Shed construction
- Diaphragm wall construction
- Tunnel boring machine (TBM)  
deliveries



# NORTH BOX EXCAVATION

- Excavating through the void in the station roof
- All material transported via St Kilda Road
- North box excavation to be complete in December





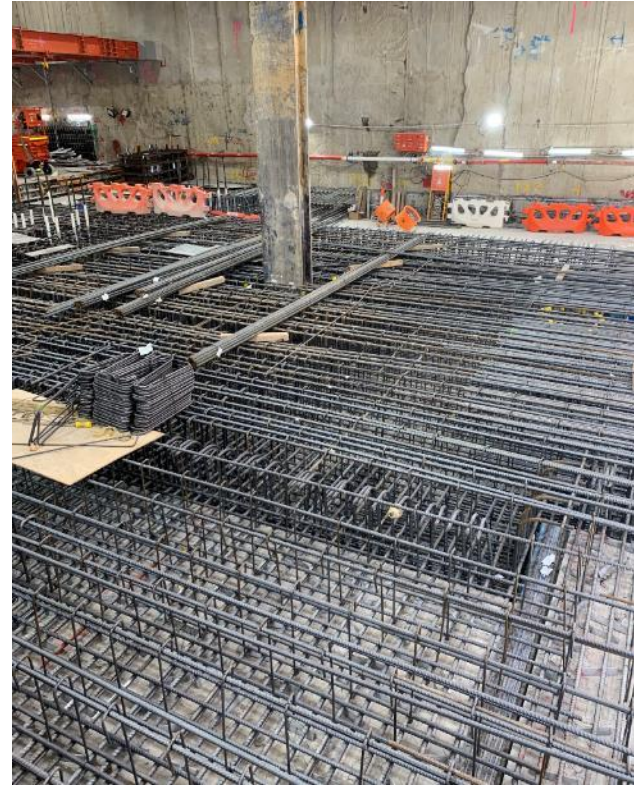


# BASE SLAB CONSTRUCTION

- Steel fixing currently operating 24/7 under the station roof
- 2 of 6 major concrete pours completed
- Once complete, tunnelling team will commence preparation for the TBM installation

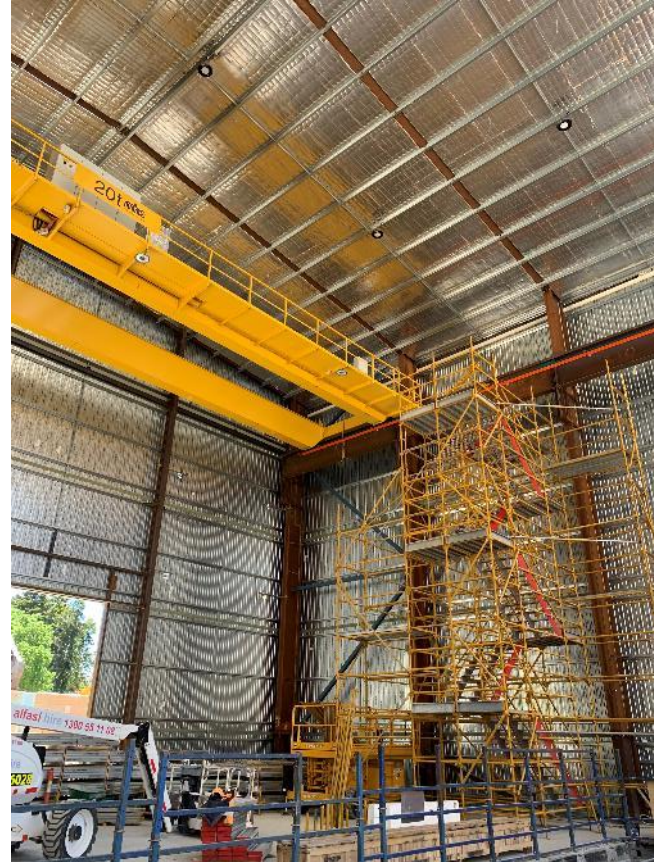


# BASE SLAB CONSTRUCTION



# SHED CONSTRUCTION

- Panel installation continuing until end of the year
- Two gantry cranes now installed
- Internal fit-out works to continue into 2020



# DIAPHRAGM WALL CONSTRUCTION MIDDLE BOX

- First pile completed Friday 22 November
- Piling and D-wall construction to be completed March 2020



- First TBM parts have now been delivered
- Some overnight closures of St Kilda Road will be required for the remaining TBM part deliveries. These closures will all occur between 1am-5am
- Parts will continue to arrive to site until April 2020
- Preparation work for the TBM assembly will begin in December



# GROUND CONDITION INVESTIGATIONS

- Boreholes are required at the site of one of the tunnel cross passages directly under Toorak Road West
- From 8pm Friday 6 December to 6am Monday 9 December, Toorak Road West will be closed to traffic at the corner of Toorak Road West and Arnold Street
- Works Involve:
  - Asphalt cutting
  - Non-destructive digging using a vacuum truck
  - Drill to bore and take soil samples.
  - Backfilling and reinstatement works
- To minimise the duration of the Toorak Road closure, works will be carried out 24/7



# ENVIRONMENT UPDATE



Building	RIMG Noise Guideline LAeq – 1 hour	Measured (Night) dB
The Domain	64	58
The Botanica		50
Hallmark Apartments		52
Domain Hill		54

- Attended monitoring undertaken for TBM deliveries
- Environmental resource available at night to monitor works post 10pm



TBM Delivery 25/11 – 2:20am



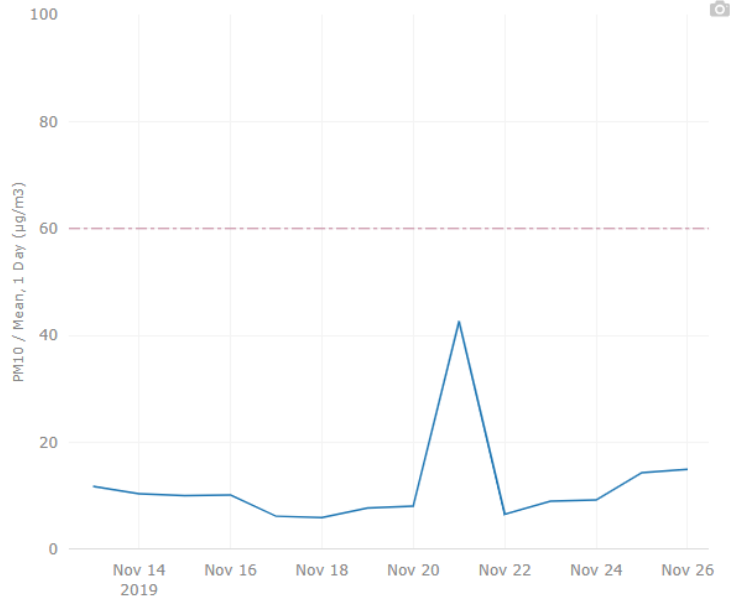
TBM Delivery 25/11 – 3:20am

- Continuation of TBM deliveries
- Base slab works currently ongoing – 24/7
- TBM assembly works coming up
- Concrete pours associated with middle box and base slab

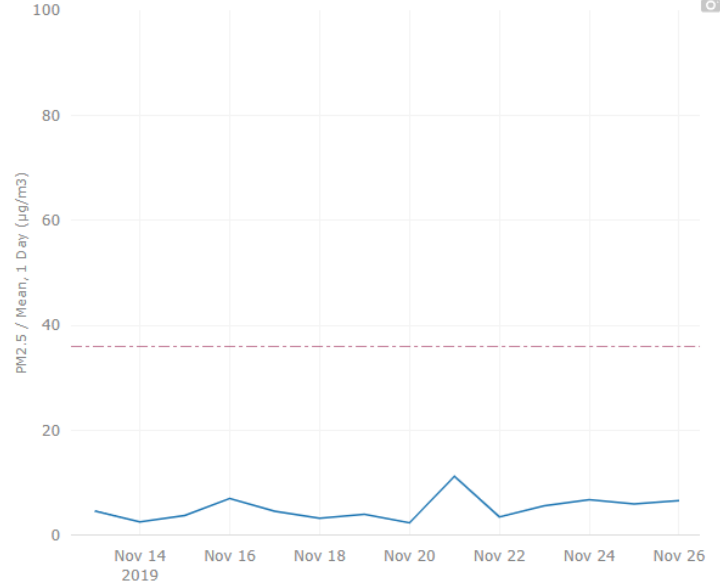
Working with tunnels team to review process and out of hours works required



# ENVIRONMENTAL MONITORING – AIR QUALITY



*St Kilda Rd Air Quality  
(PM10)*



*St Kilda Rd Air Quality  
(PM2.5)*

# DOMAIN PRECINCT UPDATE

# MAJOR EVENTS

- CYP work with local Council in coordinating any potential interface between major events and the Metro Tunnel Project
- In the Domain Precinct this includes events such as:
  - Anzac Day services
  - Australian Grand Prix
  - Melbourne Marathon



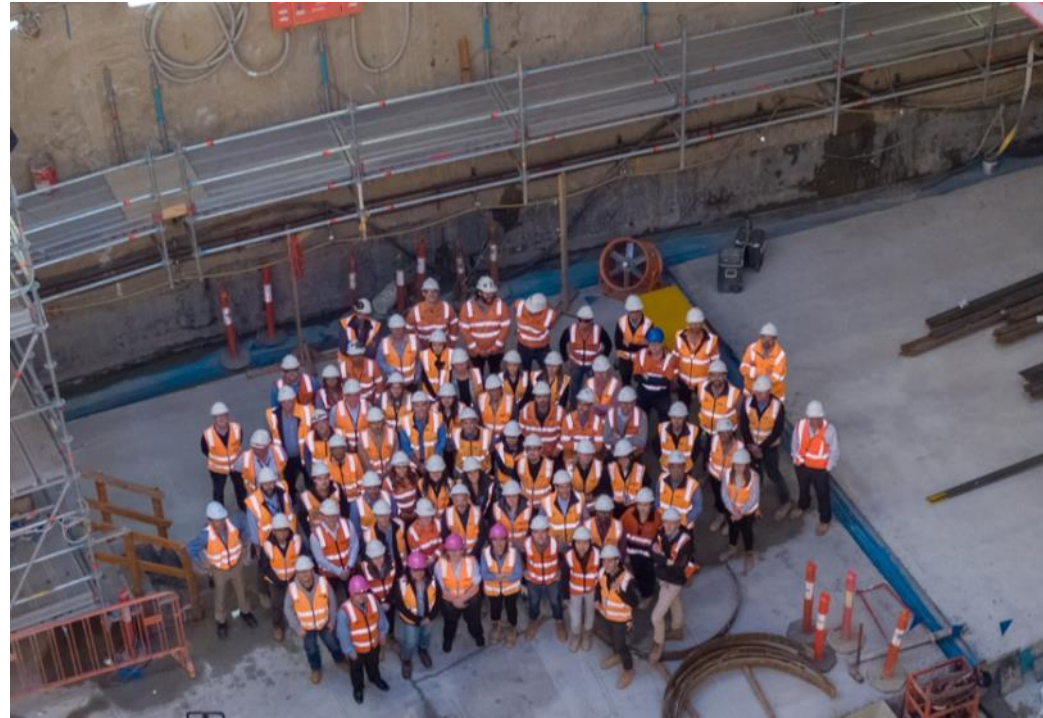
# DOMAIN ROAD POP-UP PARK UPDATE

- Installation of the pop-up park will begin on 2 December
- Involves the installation of pre-fabricated sections
- This is expected to be completed within two weeks
- Planting will take one week, following installation



# CHRISTMAS SHUTDOWN

- Works finish on 20 December 2019, and return 6 January 2020
- We wish you all a Merry Christmas, and a happy and healthy New Year
- See you in 2020!







**THANK YOU**