



Artist's impression

Fixing the missing link in Melbourne's freeway network

Works on North East Link are ramping up, ahead of major construction next year.

North East Link will slash travel times across the north-east by up to 35 minutes and take 15,000 trucks off local roads a day.

New lanes and a better freeway management system will cut peak hour trips along the Eastern Freeway between the city and the eastern suburbs by up to 11 minutes.


We've fast-tracked the new Bulleen Park & Ride by four years, while planning continues for a dedicated busway to provide faster, more frequent and more reliable trips along the Eastern Freeway from Doncaster to the city.


As part of the massive early works program we're:


- moving more than 34 kilometres of gas, water, sewer and other services to make way for North East Link
- getting ready to launch the project's first mini tunnel boring machines in Bulleen, which will build 1.8 kilometres of new sewer next year
- moving two water mains in Bulleen and Balwyn North to make way for big upgrades to the Eastern Freeway
- delivering major sports upgrade works at Veneto Club, Bulleen and Elgar Park, Box Hill to keep local clubs playing and thriving during major construction and beyond, and
- continuing to work on one of the biggest tree planting programs ever undertaken on a Victorian road project, working with the community to plant more than 30,000 trees.


Keep an eye out for works over summer as we continue the massive early works program that is creating 1000 construction jobs.

Stay up to date with works in your area by signing up to our email updates:
northeastlink.vic.gov.au/contact/subscribe

 Traffic changes on Bulleen Road for sewer works

 Water main works under the Eastern Freeway

 Designs for project released in early 2021

 Major construction to start in late 2021



Artist's impression

▲ The grass is greener with a new community park to be built on the roof of the Bulleen Park & Ride

Park and ride fast-tracked

Delivering Melbourne's first dedicated busway – starting with a new park and ride in Bulleen

Bulleen's new park and ride will feature a 5000 square metre green roof park as well as parking for up to 370 cars, bike storage cages, toilets and myki facilities.

Building the park and ride as part of North East Link will create 300 jobs. It's being fast-tracked by four years to be open by late 2022.

Delivering Bulleen Park & Ride sooner will minimise disruptions for bus passengers and drivers, and delivers the better access people asked for. Along with upgrades to Doncaster Park & Ride, car spaces will double to about 800 – making it easier to catch faster, more frequent and more reliable bus services to the city.

An Urban Design and Landscape Plan has recently been put on exhibition for public comment as part of the project's approvals process.

Construction is expected to start in mid-2021 once all approvals are in place. Find out more at engage.vic.gov.au/north-east-link/bulleenparkandride

A smarter, faster Eastern Freeway



New lanes

To remove some of the worst bottlenecks in Melbourne



11km

Of express bus lanes along the Eastern Freeway



30% reduction

In bus travel times from Doncaster to Hoddle St



Skip 18 sets

Of traffic lights to the airport



11 minutes

Travel time saved between Springvale Rd and Hoddle St



▲ New trees and shrubs have been planted at Belle Vue Primary School in Balwyn North

Tree program branches out

The first trees are in the ground as part of North East Link's tree planting program

Around 30,000 trees will be planted as part of the program. We're now looking for ideas on where to plant next. To get involved, take the survey at engage.vic.gov.au/north-east-link/trees

North East Link works to get underway in Bulleen

Major sewer and water main relocations

The mammoth task of moving almost 100 above and below-ground services to make way for North East Link has begun.

We're getting ready to put North East Link's first mini tunnel boring machines (TBMs) in the ground, digging 1.8 kilometres of new sewer between Bulleen Road and the Eastern Freeway.

Seven launch and retrieval sites will be built for the new tunnelling machines, with some disruptions to local roads from early 2021, including changed access to Avon Street, Bulleen.

From December we'll also start moving two water mains under the Eastern Freeway between Estelle Street, Bulleen and Koonung Creek Reserve in Balwyn North.

The new water mains will be built under the Eastern Freeway using a micro tunnel boring machine, helping to keep traffic moving above ground and minimising noise and disruptions for local residents.

There will be some temporary changes to local roads and walking and cycling paths during these works and we'll be speaking with nearby residents.



▲ Three mini tunnel boring machines will dig a new sewer in Bulleen next year



▲ It'll be game on for sporting teams when modern facilities are complete

Big boost for local sports

North East Link's \$68 million investment has kicked off at the Veneto Club in Bulleen

Up to 20,000 sports players will benefit from six new pavilions and major upgrades at 19 football, cricket and soccer grounds across the northern and eastern suburbs.

New synthetic and natural turf equivalent to 13 MCGs will be laid, with new electronic score boards, field lighting and female friendly change rooms installed.

Works are already underway at Veneto Club, Ford Park in Bellfield and Binnak Park in Watsonia North to keep clubs playing and thriving as we build North East Link.

Upgrades at the Veneto Club include a new synthetic soccer pitch and lighting, behind goal and boundary fencing and change room upgrades, all of which are due to be completed early next year. At Elgar Park in Box Hill we'll fund new floodlights for the southern oval, as well as a new synthetic sports ground and upgraded car parking for local football and cricket teams and their supporters.



Find out more about North East Link's sports investment at northeastlink.vic.gov.au

Major transport projects in Melbourne's east

Level crossing removals at Lilydale and Mooroolbark

Upgrades to the road and rail network are transforming travel across Melbourne

Work to remove two dangerous and congested level crossings at Mooroolbark and Lilydale will ramp up over summer.

The level crossings will be gone by 2022 with new stations built to improve rail and road travel in the outer east of Melbourne. Designs for the new stations have been released and early works have started on 450 new cars parks at Mooroolbark.

More than 53,000 vehicles travel through these level crossings each day where the boom gates can be down for up to a quarter of the morning peak.

More than half of the tunnelling is now complete on the Metro Tunnel. When finished it will bring more trains to and from the suburbs and during peak periods will slash travel times by up to 50 minutes a day.



▲ Metro Tunnel is shaping up underground

Get involved and share your ideas at engage.vic.gov.au/bigbuild



▲ Early works started in May 2020 to remove two level crossings at Manchester Road, Mooroolbark and Maroondah Highway, Lilydale

Full steam ahead for Suburban Rail Loop

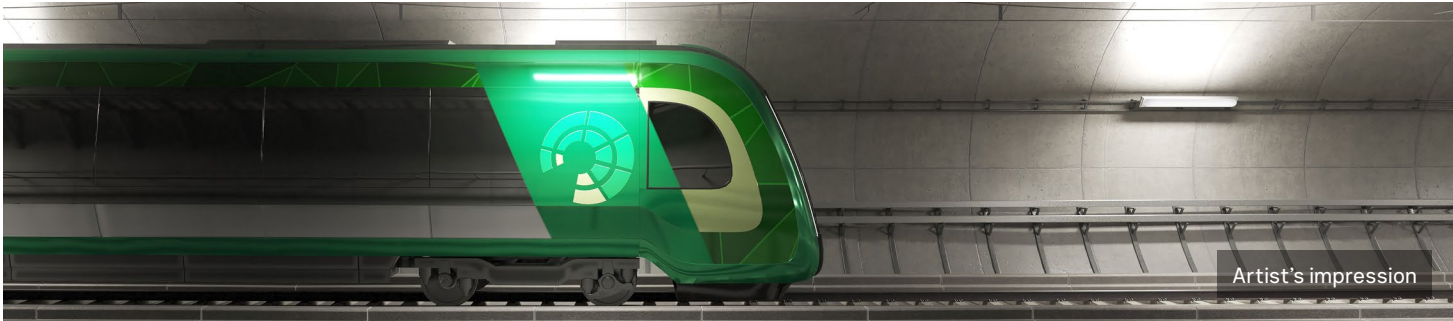
Works will kick off on Suburban Rail Loop in 2022 – creating up to 800 direct jobs and paving the way for major construction on the state's biggest ever rail project.

A huge budget boost of \$2.2 billion has been announced for initial and early works and the proposed location of six new underground stations for Stage One has also been revealed.

Stage One of the project will run between Cheltenham and Box Hill, with the full project to eventually link every major train line between Frankston and Werribee via Melbourne Airport.

An interactive mapping tool and survey capturing local community views on each of the proposed station locations remains open.

You can have your say at suburbanrailloop.vic.gov.au/Have-Your-Say



▲ Stage One of the project runs for 26 kilometres and includes six proposed stations in the city's south-east and east

Getting traffic moving on the Monash

Smart technology will improve travel times across Melbourne's east

Major works are advanced on the Monash Freeway, with 36 kilometres of safety barriers installed along the centre median, so new lanes can be safely constructed behind them.

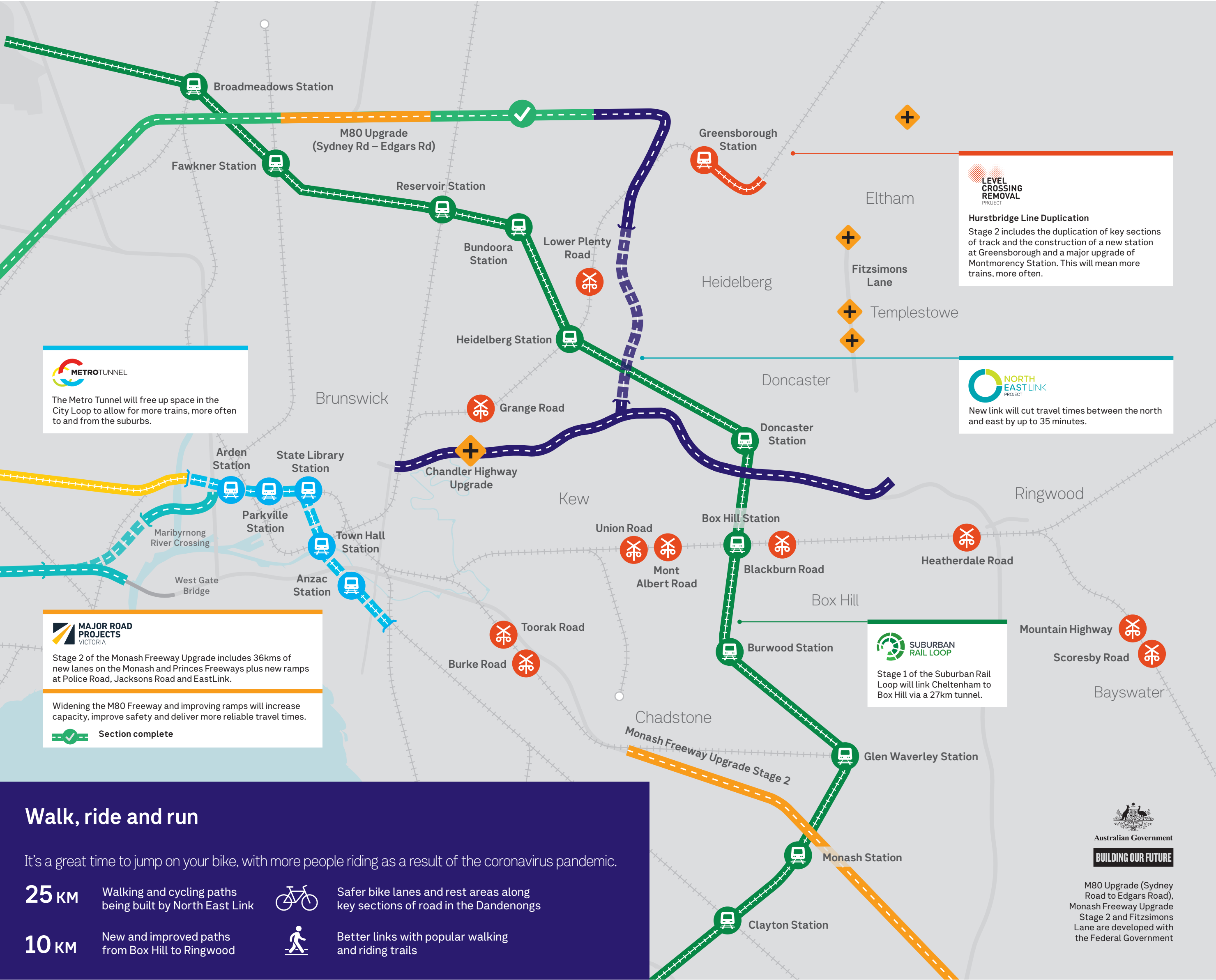
To keep traffic moving and as many lanes open as possible during works, line markings have been moved to create a temporary lane on the shoulder of the freeway.

Smart on-road technology will tackle traffic congestion and slash travel times for the 470,000 drivers who use it daily.

The installation of the road management system between the South Gippsland Freeway and Princes Highway will help keep traffic moving through the east and into the city.

The Monash Freeway Upgrade is being delivered by Major Road Projects Victoria and also includes improvements to the Beaconsfield Interchange and EastLink.

Construction on Stage 2 of the Monash Freeway is expected to be complete in 2022.



Summer disruptions

We're working hard to build a better transport network over the summer months. While we work, road and public transport disruptions could affect your travel.



Monash Freeway Upgrade

Detours during summer

There will be detours in place as crews work between Warrigal Road and EastLink, and between Clyde Road and Cardinia Road.



Works continue on North East Link

Road closures on Greensborough Road and in Bulleen this summer

Local roads in Bulleen will be closed as works start to move the Yarra East Main Sewer. Lanes will also be closed overnight on Greensborough Road while a gas pipe is moved as well as some night time works to relocate water, power and telecommunication services.



Maroondah Highway level crossing removal

Buses replace trains on the Lilydale Line throughout January

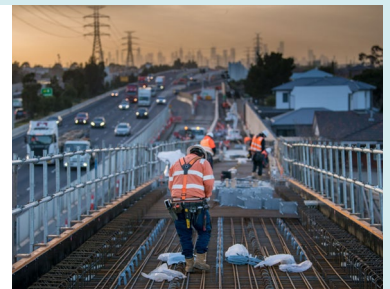
Buses will replace trains on the Lilydale Line as construction on the Maroondah Highway and Manchester Road level crossing removals get underway. As part of level crossing works, there'll also be road closures on Maroondah Highway and Manchester Road.



Summer travel

Freeway and regional disruptions in January

If you're travelling around the state, keep in mind that West Gate Tunnel works will impact the West Gate Freeway in January while annual maintenance on the West Gate Bridge will also cause delays in December. There will be disruptions in regional Victoria too.



Keep in touch to find out if you'll be affected by disruptions

1

Go to the calendar on our disruptions page at bigbuild.vic.gov.au

2

Choose the disruption relevant to you

3

Subscribe to the calendar to stay up to date

Find out how we're building big in the east at bigbuild.vic.gov.au

To talk to us call **1800 105 105** any time.

If you're deaf, or have a hearing or speech impairment, contact us through the National Relay Service – for more information, visit relayservice.gov.au



For other languages
call 9209 0147



@bigbuildvic

