



**HURSTBRIDGE LINE
DUPLICATION**

Delivered by Level Crossing Removal Project

VIRTUAL INFORMATION SESSION

August 2021



Authorised by the Victorian Government, 1 Treasury Place, Melbourne.

INTRODUCTION

How this session will work



PROJECT UPDATE

Deputy Program Director



Project overview

The Victorian Government is delivering further improvements on the Hurstbridge line, including more train services, less crowding on peak trains and better connections to public transport in Melbourne's north-east.



New stations at Greensborough and Montmorency



Upgrades to platform 2 at Diamond Creek station



2km duplicated track between Greensborough and Montmorency



New pedestrian connection at Diamond Valley College



1.5km duplicated track between Diamond Creek and Wattle Glen



Better services and less congestion

The investment will enable trains to run, on average:

- every seven minutes from Greensborough
- every 10 minutes from Montmorency and Eltham
- every 20 minutes from Diamond Creek, Wattle Glen and Hurstbridge in the peak.

And reduce congestion for commuters in this growing part of Melbourne's north-east.



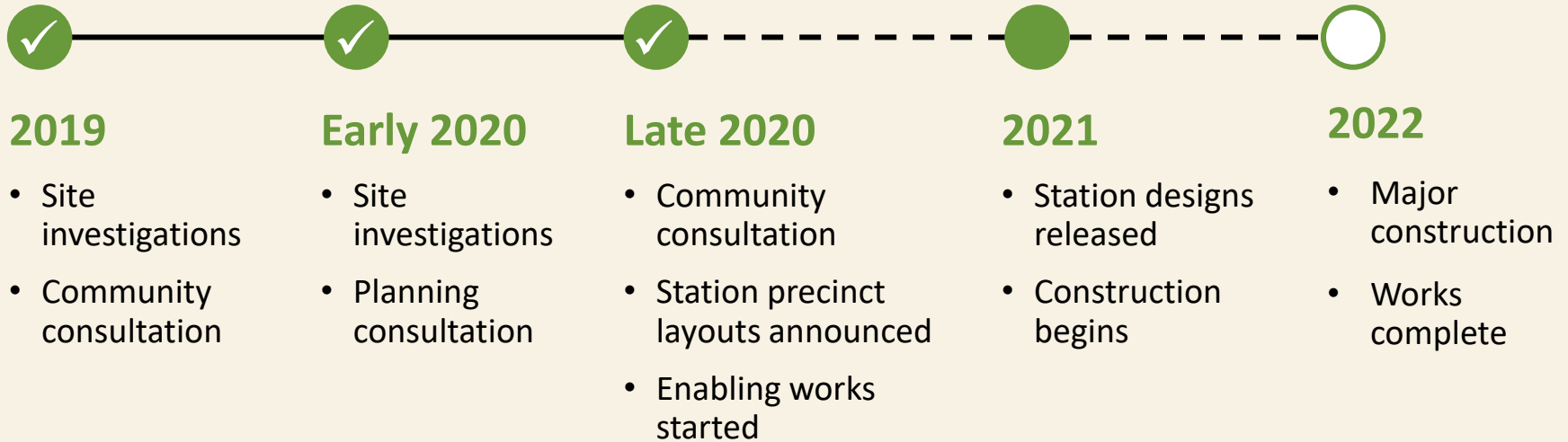
New Greensborough Station



New Montmorency Station



Project timeline



**The above timeline is subject to change.*

Eltham Copper Butterfly

- In late January 2021, DELWP advised LXP of a reported sighting of the Eltham Copper Butterfly within the project area
- A habitat area has been identified within the rail corridor in Montmorency
- The butterfly is listed as an endangered species and had not been seen in this location for over 40 years
- Site investigations over the last four years did not indicate the presence or suitable habitat of the Eltham Copper Butterfly in the project area
- No project works will occur in the habitat area – this is a protected area



*Eltham Copper Butterfly ©
Nillumbik Shire Council*



Original design

Greensborough to Montmorency rail duplication



Revised design

Greensborough to Montmorency rail duplication



UPCOMING WORKS

Interface Manager – Southern Program Alliance



Train line closure

- From **8.10pm Monday 30 August to 3.10am Saturday 4 September**, the train line will be closed for major works
- Buses will replace trains between **Macleod and Hurstbridge**, with limited express and stopping all stations services
- Construction will take place 24/7, along the rail line from Greensborough to Montmorency, and in Diamond Creek to Wattle Glen
- The majority of tree and vegetation removal for the project **will be completed** by the end of the rail closure works



Hurstbridge Line: Buses Replace trains from Macleod to Hurstbridge

8.10pm Monday 30 August to last train Friday 3 September



LEGEND

-  Train stations
-  Hurstbridge Line bus replacement route
-  Hurstbridge Line works
-  Road disruptions

HURSTBRIDGE LINE DUPLICATION

Railway Road closed near the intersection with Para Road from 29 August until mid-September 2021. Detours will be in place for vehicle users as well as Plenty River Trail users during this time



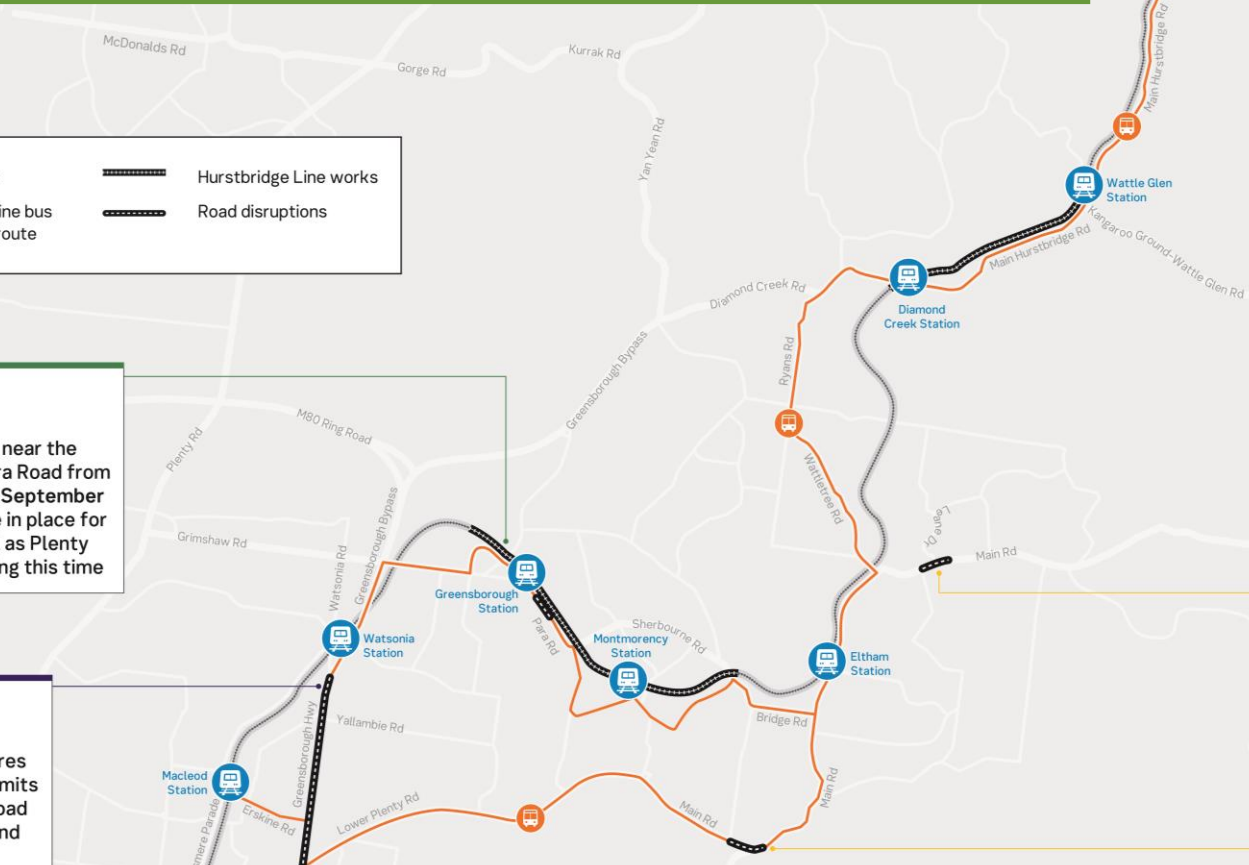
Overnight lane closures and reduced speed limits on Greensborough Road between Watsonia and Lower Plenty Road



Fitzsimons Lane Upgrade. Lane closures at Leane Drive and Main Road intersection until late September

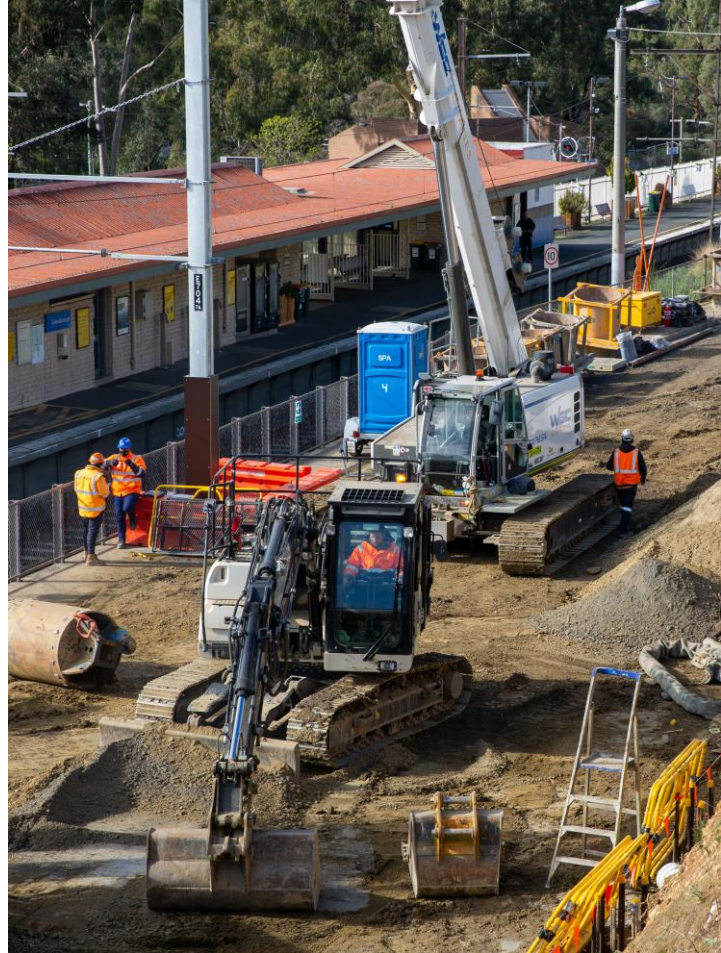


Fitzsimons Lane Upgrade. Off peak lane closures at Fitzsimons Lane and Main Road until late November



Greensborough works

- Piling works (Greensborough Station and Plenty River Bridge)
- Piling for overhead rail signals and power
- Service relocations and utilities works
- Installation of fencing and barriers
- Geotechnical investigations
- Track and storm water drainage works
- Preparation works for the new substation



Montmorency works

- Tree and vegetation removal along rail corridor
- Track and stormwater drainage works
- Services relocation
- Installation of fencing and barriers
- Signalling works
- Geotechnical investigations



Diamond Creek works

- Utilities works
- Services relocation
- Piling for overhead rail signals and power
- Construction of access tracks in the rail corridor
- Retaining wall works
- Geotechnical investigations
- Tree and vegetation removal in the rail corridor and Sacred Heart Primary School



PETRIE PARK



What's happening

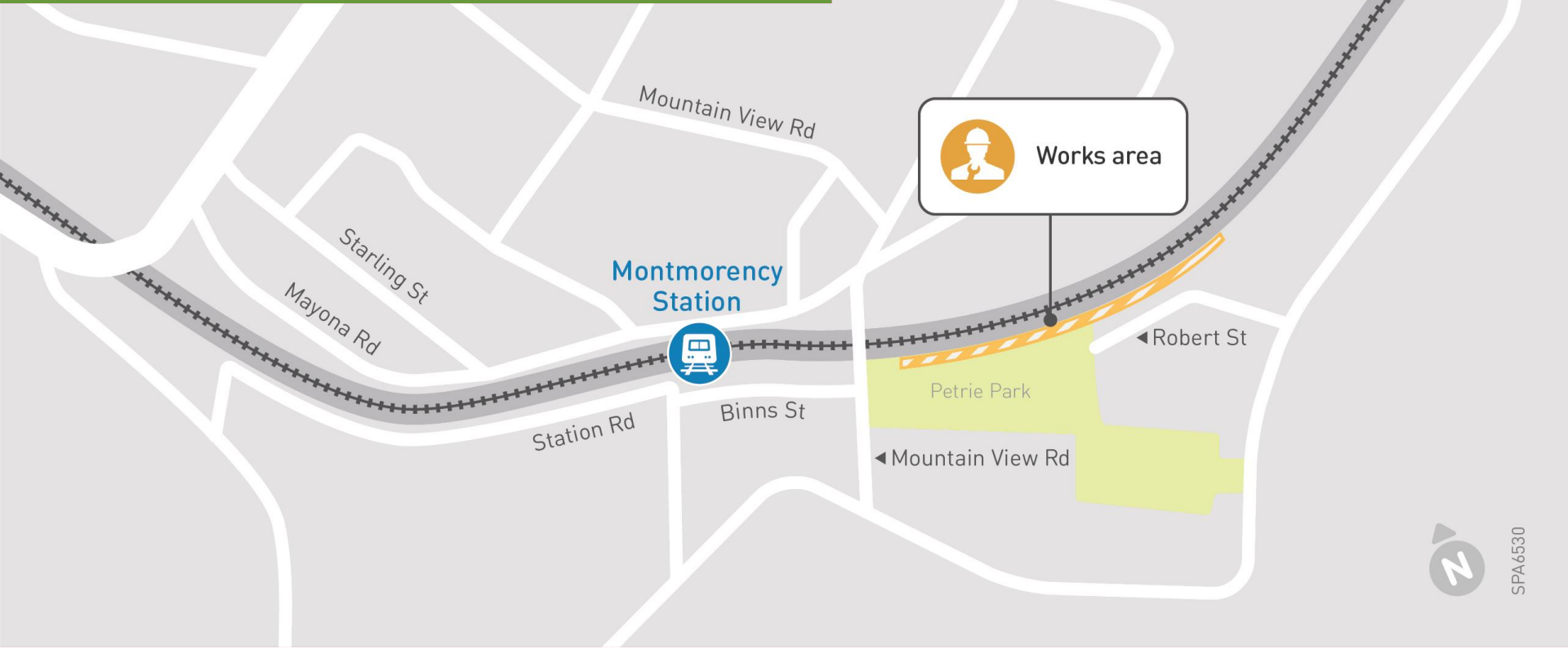
- Underground services and signalling equipment need to be upgraded, including next to Petrie Park
- Works to occur on a small strip of land next to rail line and only on government land
- To allow works to occur safely, some trees and vegetation will need to be removed
- Trees will be mulched and donated to local schools and community groups
- We're planting over 1,900 trees and 37,500 plants, shrubs and grasses along the rail corridor in Greensborough, Montmorency, and Diamond Creek to Wattle Glen



Planting at Gardiner Station, Glen Iris



Petrie Park map of works area



Minimising tree and vegetation removal

We've worked hard to minimise the impact of works on trees and vegetation:

- the fence line along the rail corridor next to Petrie Park has been shifted
- non-destructive digging techniques are being used to protect tree root zones
- investigations done on whether the underground services could be placed on the other side of the rail line at Petrie Park, on VicTrack land.





NEXT STEPS

Deputy Director, Stakeholder Relations & Communications

Working together

- The Hurstbridge Line Duplication Project is committed to working closely with communities to ensure you are informed about how you will be affected during construction.
- We'll minimise impacts wherever possible during the construction process.
- We are eager to involve communities in many ways, including art opportunities, school engagement programs, landscaping, presentations and tours.
- We will engage regularly to ensure there are plenty of opportunities for everyone to get involved.

Stay tuned for some upcoming opportunities



Q&A



TREES AND VEGETATION



PETRIE PARK



CAR PARKING AT MONTMORENCY STATION



DESIGN CHANGE & DUPLICATION



PEDESTRIAN CROSSING



SERVICE DELIVERY



PROJECT DESIGN



COMMUNITY ENGAGEMENT



THANK YOU

