



JULY 2021

# MT DERRIMUT ROAD CONSULTATION REPORT



[levelcrossings.vic.gov.au](http://levelcrossings.vic.gov.au)

Authorised and published by the Victorian Government, 1 Treasury Place, Melbourne



# Contents

<b>Project overview</b>	<b>1</b>
<b>Introduction</b>	<b>2</b>
Your feedback	2
<b>What we heard</b>	<b>3</b>
How you use the area	3
How you would like us to improve Deer Park Station	3
<b>What's important to you</b>	<b>4</b>
<b>Next steps</b>	<b>5</b>
Project timeline	5



*New Mt Derrimut Road rail bridge over the road looking west from Tilburn Road. Artist impression – subject to change.*

## Why the level crossing needs to go



There have been 15 boom gate collisions and 15 near misses at the crossing since 2017.



The boom gates can be down for 45 per cent of the morning peak when up to 37 trains pass through the crossing.



Delays can be caused for the 23,000 vehicles that pass through the crossing each day.



There are future plans to increase trains on the Geelong and Ballarat lines, meaning more boom gate down time.

## Project benefits



Improved safety for drivers, pedestrians and cyclists



A more reliable road network



Better connections and travel times



Paving the way for future transport upgrades

# PROJECT OVERVIEW

We're removing the dangerous and congested level crossing at Mt Derrimut Road by elevating the rail line over the road and building a new Deer Park Station.

Removing the level crossing will enhance connectivity, improve amenity and create a more reliable road network for the Deer Park community.

Elevating the rail line will increase space below the tracks, making it safer and easier for drivers, pedestrians and cyclists to move around.

The new Deer Park Station will be built slightly west of the existing level crossing, away from Mt Derrimut Road.

It will include car parking, bicycle facilities and landscaping, and will be accessible from north and south of the rail line. This will improve connections for residents on both sides of the tracks.

We'll elevate the new platforms and make them accessible by stairs, lifts and ramps, making it easier to access trains.

The design will also be future-proofed to accommodate future transport upgrades on the line.

Construction will start in late 2021 and the level crossing will be removed in 2024.

The nearby level crossings at Fitzgerald Road in Ardeer and Robinsons Road in Deer Park will be removed by 2023.





*New Deer Park Station precinct looking south from Railway Parade. Artist impression – subject to change.*

# INTRODUCTION

We engaged with the community and key stakeholders, seeking feedback on what you value about the local area, how you move around and your station precinct design preferences.

The consultation was open from 19 April to 7 May 2021. Stakeholders and the community provided feedback on the project online and through face-to-face engagement, in line with COVID-19 restrictions.

A community survey was available online via the Engage Victoria platform, and 9,000 hard-copy surveys were distributed to the local community.

We undertook face-to-face engagement via community pop-ups, to inform locals about the project and to seek out feedback on the project.

We also distributed email updates to 2773 project subscribers to encourage participation in the community survey.

The responses received are helping us shape the design and understand what's important to the community about the local area.

Later this year, we'll demonstrate how community input has influenced the project, and present final designs to residents and stakeholders.

## Your feedback

There was a high level of community interest in the consultation, with a total of 556 surveys received.

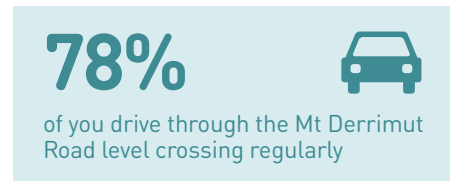
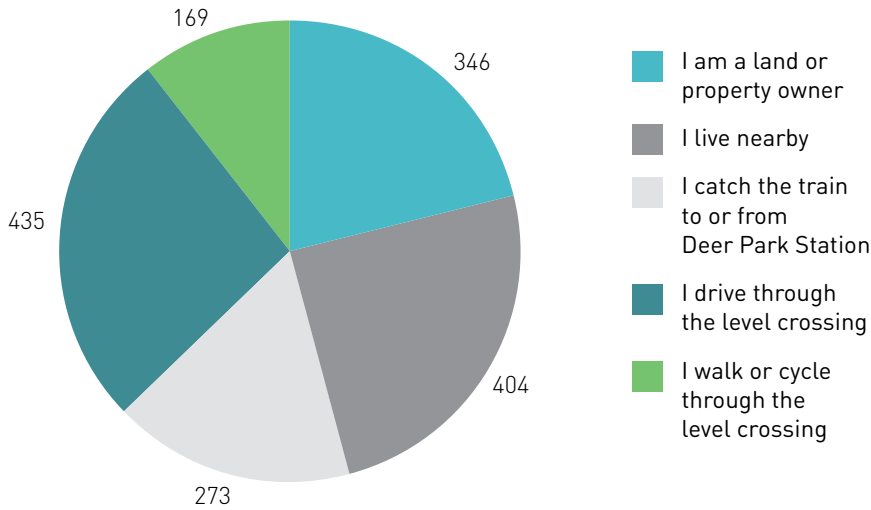
- 256 online and 300 hard-copy surveys received including nine submissions in Vietnamese.
- 4663 visits to the Mt Derrimut Road project webpage on the Engage Victoria platform.
- 31 queries received via the 'Ask Us' function on the Engage Victoria platform.
- More than 200 community members participated in community pop-ups in April.



# WHAT WE HEARD

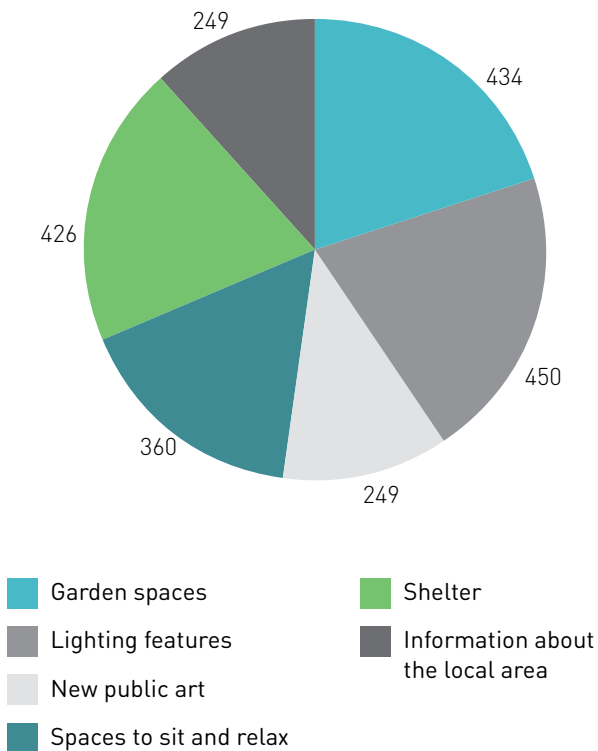
We asked you to share your preferences, insights and feedback on the project.

## How you use the area

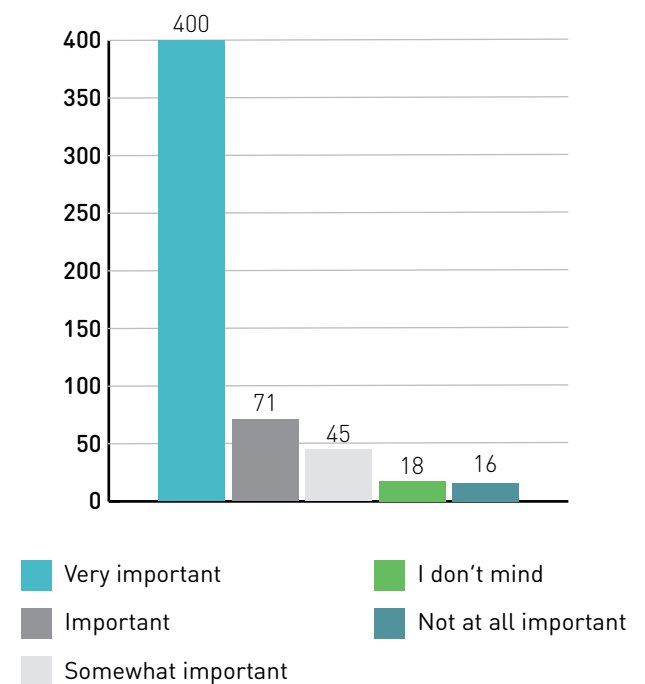


## How you would like us to improve Deer Park Station

Elements you would like to see around the new Deer Park Station precinct



How important is it to you to see better pedestrian and cycling connections surrounding the Deer Park Station precinct?



## Key themes from your feedback

### Greenery

You told us you would like the station design to include more greenery and garden spaces.

### Safety

You asked to make the station area safer, to provide a sense of security for station users.

### Pedestrian and cyclist access

You also told us you would like improved pedestrian and cyclist access to Deer Park Station, including walking paths and additional pedestrian crossings.

### Accessibility

Some of you asked for the station design to include accessible features for passengers with a disability or the elderly.

### Surrounding works

Some of you raised concerns about rail and road disruptions as a result of the level crossing removal works happening at Ardeer and Deer Park.

We'll work with the teams at the Fitzgerald Road and Robinsons Road projects to minimise impacts for commuters, road users, cyclists and pedestrians.

### Parking

Car parking was also a common theme, with many suggesting that they'd like additional car parking within the station precinct to provide more parking options for commuters.

The Victorian Government has committed to the delivery of 150 new and upgraded car parking spaces at Deer Park Station as part of the Car Parks for Commuters program.

69%



would like to see the public space around the level crossing and new station landscaped with a mix of grass, paving, trees and ground level planting

80%



want lighting features around the new station precinct

### Removing the level crossing

A large number of respondents would like the level crossing to be removed as soon as possible, to remove the daily delays at the boom gates sooner.

The Mt Derrimut Road level crossing is being removed one year ahead of schedule, with major construction to begin in late 2021. The level crossing will be gone in 2024.

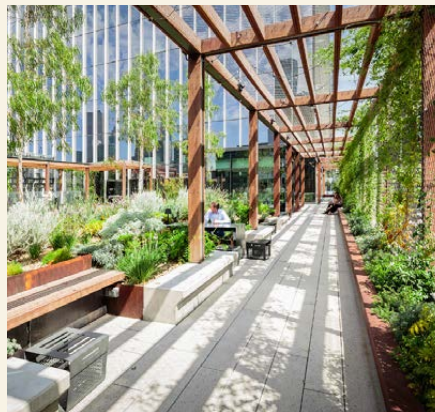
# WHAT'S IMPORTANT TO YOU

We asked you to select images that reflect your preferences for the look and feel of the station design.

The images below were the most preferred with the majority selecting images with greenery, open space, shade and seating.



*'I hope there are more green areas and infrastructure for pedestrians and bikes.'*



*'I personally love the blend of modern, open buildings with shelter and large lush greenery to make the area look beautiful, clean and neat.'*



*'It would be so nice to see the area beautified as the area currently is very industrial.'*



# NEXT STEPS

Thank you to everyone who provided feedback during the first phase of community consultation.

We will use your feedback to progress the designs for the project. We'll ensure that the key themes from the feedback are reflected in the designs.

Later this year, we'll present the final designs to the community and talk to you about construction of the rail bridge and new station.

Preparation for major works is now complete and construction will begin later this year to remove the level crossing.

## Connect with us

The best way to stay up to date on the project is by signing up to email updates.

Subscribe to email updates at [levelcrossings.vic.gov.au/subscribe](https://levelcrossings.vic.gov.au/subscribe)

Visit our website for more project information: [levelcrossings.vic.gov.au](https://levelcrossings.vic.gov.au)

## Project timeline

- ✓ 2019 – 2020
  - Early investigations
- ✓ Early 2021
  - Site investigations continue
  - Concept designs released and community engagement
- ✓ Mid 2021
  - Early works begin
- Late 2021
  - Final designs released and community engagement
  - Contract award
  - Major construction starts
- 2024
  - Level crossing removed

*\*Timeline above subject to change*

*New Mt Derrimut Road rail over road design aerial view. Artist impression – subject to change.*



## CONTACT US

[contact@levelcrossings.vic.gov.au](mailto:contact@levelcrossings.vic.gov.au)  
1800 105 105

Level Crossing Removal Project  
GPO Box 4509, Melbourne VIC 3001

Follow us on social media  
[@levelcrossings](#)



**Translation service** – For languages other than English, please call 9209 0147.

Please contact us if you would like this information in an accessible format.

If you need assistance because of a hearing or speech impairment, please visit [relayservice.gov.au](http://relayservice.gov.au)