

GREENSBOROUGH STATION – MARCH

# HURSTBRIDGE LINE DUPLICATION UPDATE



## New Greensborough Station

The Victorian Government is investing \$530 million in the second stage of the Hurstbridge Line Duplication that will deliver further improvements, including more train services, less crowding on peak trains and better connections to public transport in Melbourne's north east.

As part of this project, we're building a new station at Greensborough. We've developed designs for the stations that reflect the character of the local areas and factor in what we heard from the community.

The community's top priorities were better pedestrian access to the station, and better connections between the station, its surrounds and car parking.

The final design combines that feedback and technical requirements including ground conditions, natural features and the constraints of the rail corridor.

**Trees, shrubs and bushes will be planted in the station precinct to extend and reflect the local bushland.**

### More Trains More Often



Every 7 minutes  
from Greensborough



Every 10 minutes from  
Montmorency and Eltham



Every 20 minutes  
from Diamond Creek,  
Wattle Glen and Hurstbridge



Two additional services  
from Hurstbridge



Five additional services  
on the Mernda line

**SIGN UP FOR PROJECT UPDATES**  
[levelcrossings.vic.gov.au](http://levelcrossings.vic.gov.au)







Greensborough Station from Poulter Avenue



Greensborough Station concourse from Para Road

Artist's impression only.

Artist's impression only.

# WE HEARD WHAT YOU WANTED IN YOUR NEW GREENSBOROUGH STATION

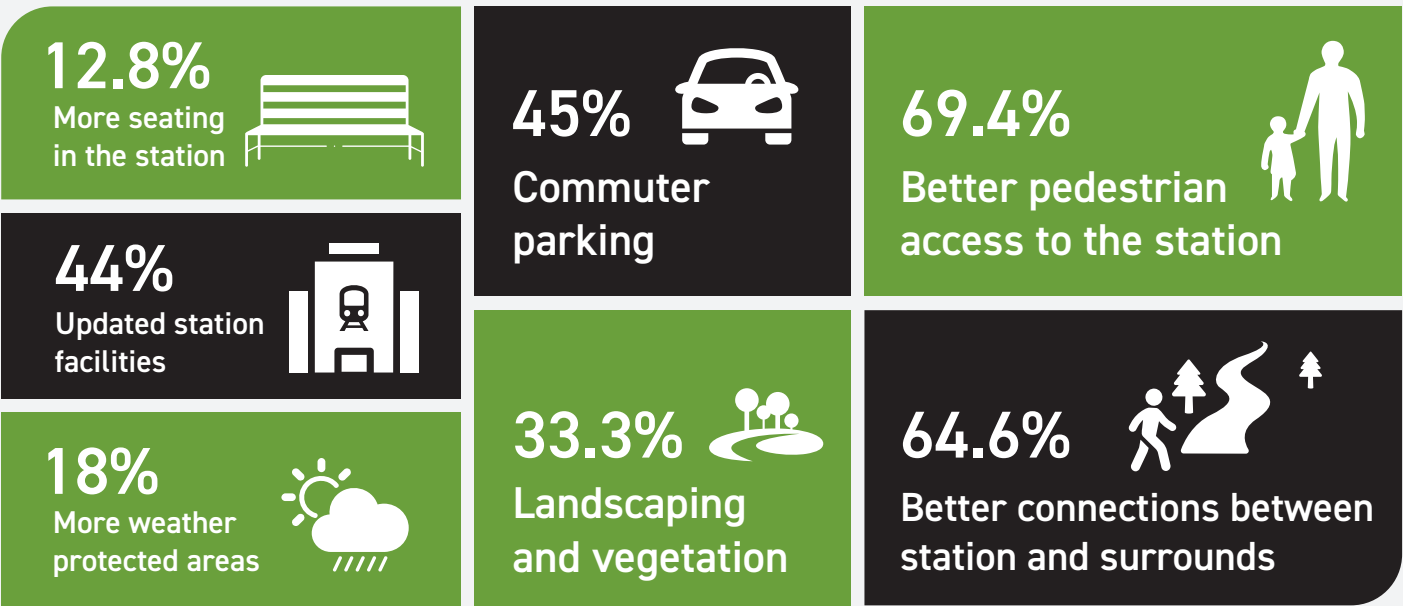
Your feedback has been integral in the design of Greensborough Station and has resulted in a minimalist design, incorporating native vegetation, updated facilities, all-abilities access and more weather protection.

## Passengers can look forward to:

- Improved train services every seven minutes in the morning peak
- A covered pedestrian bridge and concourse, accessible 24/7
- Improved connections between the station, shops and parklands
- Stairs and lifts to the Poulter Avenue car park and station platforms for easier access for all
- Improved facilities including an air-conditioned waiting room, unisex and ambulant toilets and ticket office
- Improved safety and security, with improved lighting and CCTV cameras
- Station buildings and precinct that reflect the surrounding natural environment
- 700 trees and 15,000 plants, shrubs and grasses to be planted in the new station precinct to extend the bushland feel of the local area
- 40 new car parks at Greensborough Station.

## What Greensborough told us

In October and November 2020 you told us that better pedestrian access, better connections between the station and surrounds, more parking, and landscape and vegetation were important.







Greensborough Station view from Poulter Avenue car park

Artist's impression only.

## What's new at the station?

### Community feedback has helped shape the new Greensborough Station.

You told us that the community preferred modern, natural and earthy tones, along with native vegetation. The final design reflects these preferences, with the colours and feel of the buildings and landscaping complementing the surrounds.

Sustainability is an important part of the new station building, which includes 130 solar panels and a rainwater tank.

Platforms and station entrances will have clear sight lines and open well-lit areas. There will be CCTV cameras on the platforms, at station entrances and in the car parks close to the station.

A covered pedestrian bridge and concourse will make it easier to cross the rail corridor between Poulter Avenue and Para Road, as well as improve connections between Para Road, the Plenty River Trail, and the Greensborough shopping precinct.

The new design meets Australian design standards for accessibility and mobility. The bridge will be at street level on Para Road, providing access for people of all abilities. Lifts to the pedestrian overpass and platforms will accommodate mobility scooters, wheelchairs, and prams. Stairs and lifts to the platforms and Poulter Avenue car park will replace the current long, steep ramps. Passengers with a disability will have access to clearly marked parking close to the station entrances.

**Bike hoops will be more than doubled to 13 and there will be a new secure storage cage for 26 bikes. Bus facilities around the station precinct will also be improved.**

### Project timeline

- ✓ **2019**
  - Site investigations
  - Community consultation
- ✓ **Early 2020**
  - Site investigations
  - Planning consultation
- ✓ **Late 2020**
  - Community consultation
  - Station precinct layouts announced
  - Enabling works begin
- **2021**
  - Station designs released
  - Construction begins
- **2022**
  - Works complete

*\* Please note that the timeline above is subject to change.*

### CONTACT US

contact@levelcrossings.vic.gov.au  
1800 105 105  
Level Crossing Removal Project  
GPO Box 4509, Melbourne VIC 3001

Follow us on social media  
@levelcrossings



**Translation service** – For languages other than English, please call 9280 0780.

Please contact us if you would like this information in an accessible format.

If you need assistance because of a hearing or speech impairment, please visit relay.service.gov.au